

1903
ORIGINS
Precursor to TCBA Today

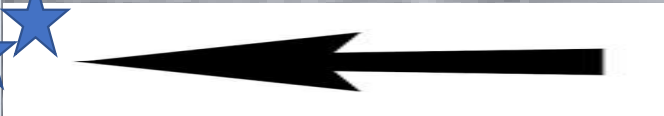
ORIGINS 1903

feeble



U-TCB902 - TCBA Origins 1901 MLB - Standings on Sep. 24, 1901

	W	L	PCT	GB
TCBA Origins 1902				
Mahley Division				
Boston Beaneaters	100	55	.645	-
Hyde Park Vitamen	99	56	.639	1.0
Long Island Islanders	62	92	.403	37.5
South Starrucca Ainspans	35	119	.227	64.5
McCorkindale Division				
Bradenton Buckeyes	114	40	.740	-
Bergen Barflies	67	87	.435	47.0
Mexicali Mallards	66	88	.429	48.0
Cleveland Naps	47	107	.305	67.0
Kirwin Division				
Mimosa Mirthmakers	95	59	.617	-
Grand Rapids Wolverines	92	62	.597	3.0
Newton Buccs	63	91	.409	32.0
Waukesha Freeman	59	95	.383	36.0
Seitz Division				
Turin Mountaineers	96	59	.619	-
Wilderness Wraiths	95	60	.613	1.0
Hereford Highlanders	78	76	.506	17.5
Buffalo Mules	66	88	.429	29.5





O
R
I
G
I
N
S

DRAFT

FEEBLE FOUR

1-WAUKESHA FREEMEN

2-CLEVELAND NAPS

3-SOUTH STARRUCCA AINSPANS

4-LONG ISLAND ISLANDERS

1903

THE OTHERS

5-NEWTON BUCCS

6-MEXICALI

7-BUFFALO

8-BERGEN

9-HEREFORD

10-GRAND RAPIDS

11-WILDERNESS

12-MIMOSA

13-TURIN

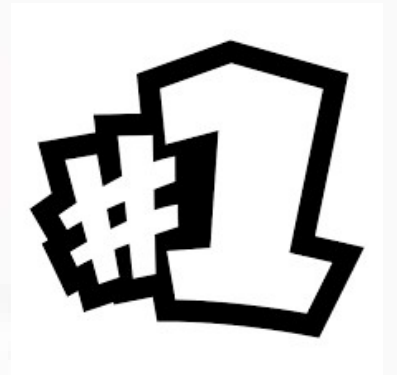
14-HYDE PARK

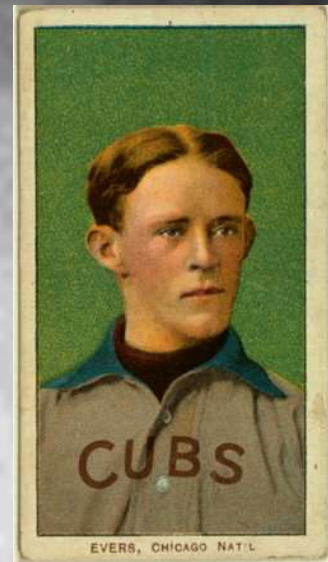
15-BOSTON

16-BRADENTON



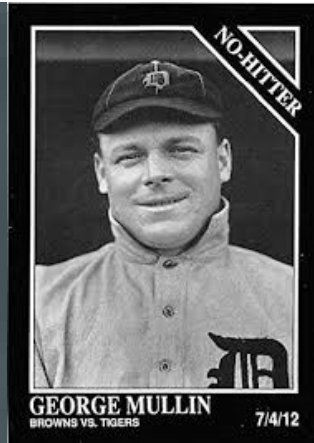
Waukesha Freeman
Addie Joss





#2

**Cleveland Naps
Johnny Evers**



**South Starrucca
George Mullin**

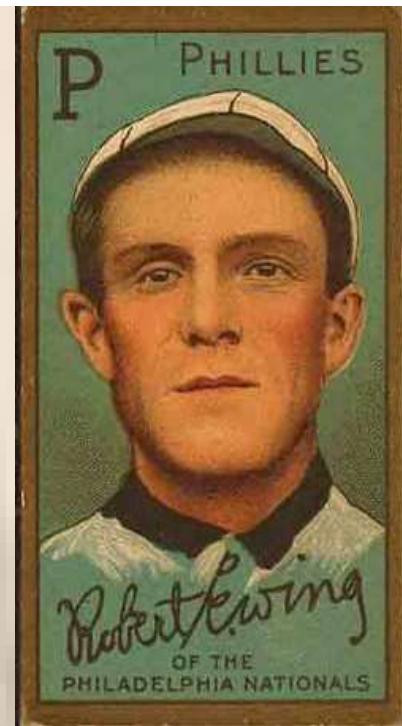




EWING, CINCINNATI



EWING
Pitcher, Cincinnati N. L.



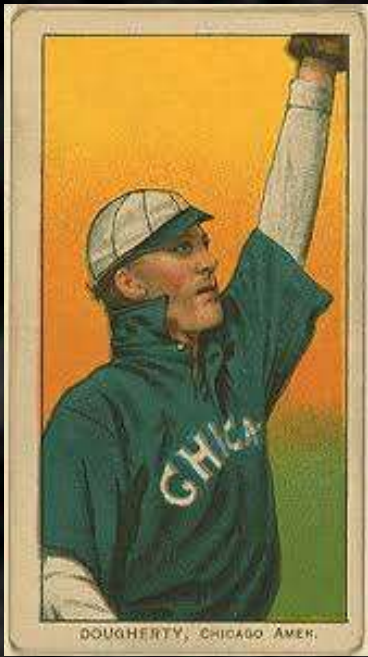
**Long Island Islanders
Bob Ewing**





**Newton Buccs
Joe Tinker**





6

Mexicali Mallards
Patsy Dougherty





**Buffalo Mules
Andy Coakley**

7



8

Bergen Barflies
Carl Lundgren



9

**Hereford Highlanders
Bob Rhodes**



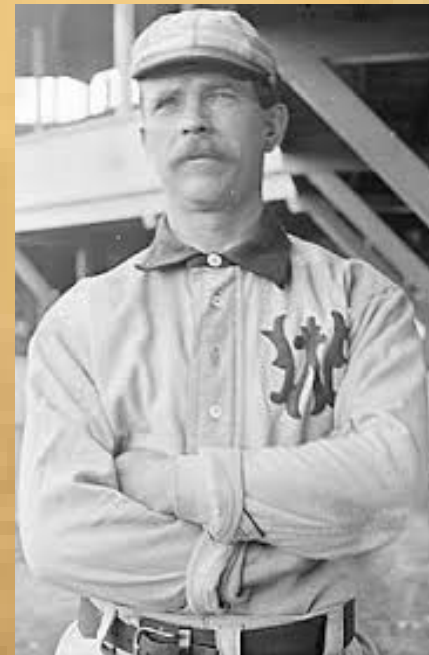
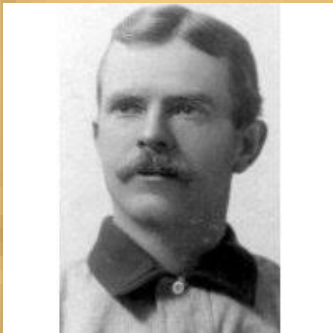


**Grand Rapids Wolverines
Harry Bemis**

10



Wilderness Wraiths Jimmy Ryan



Mimosa Mirthmakers
Nick Altrock

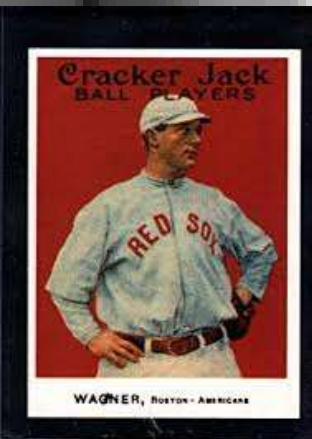
12



Uploaded by Harbinger Auctions, Inc. (USA)

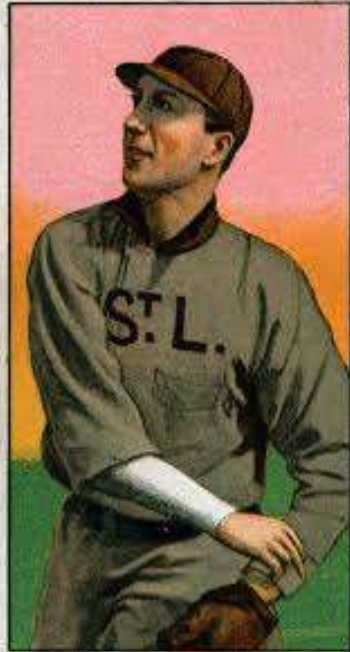
#13

**Turin Mountaineers
Heinie Wagner**



Hyde Park Vitamen
Tom Jones

14



JONES, ST. LOUIS AMER.





**Boston Beaneaters
Fred Glade**



HOMER SMOOT DIES, EX-MAJOR LEAGUER

SALISBURY, Md., March 27.—Homer Smoot, former major leaguer and in 1925 manager of the Salisbury club of the Eastern Shore League died at his home here Saturday at the age of 59 years after a brief illness.

Beginning his baseball career with the Worcester, Mass., Club League, in 1901, Smoot led the club in hitting and was sold to Cincinnati and later farmed to Toledo of the American Association and three years ended his active playing career, hitting in his last year .444 clip. At no time in the major did he hit below .300.

He has been engaged in the

The Blues game score in the first inning, four and practically scored with three more in the White's biggest score six sixth inning when they W. Smith of the Blues of the game, fanning 12 Whites011 1



16



**Bradenton Buckeyes
Homer Smoot**



FREEMEN



1-Addie Joss
5-Alex Hardy

2-George Barclay
6-Fred Klobedanz

3-Jim St. Vrain
7-Bill Clay

4-Jack O'Neill
8-Pete Lamer



Waukesha Freeman Draft Picks



Waukesha Opening Day Lineup

- 1-Sage Sajdak, LF**
- 2-Lave Cross, 3B**
- 3-Honus Wagner, SS**
- 4-Frank Isbell, 1B**
- 5-George Barclay, CF**
- 6-Jack O'Neill, C**
- 7-Pete Childs, 2B**
- 8-Lefty Davis, RF**
- 9-Togie Pittinger P**



Waukesha Opening Day Lineup

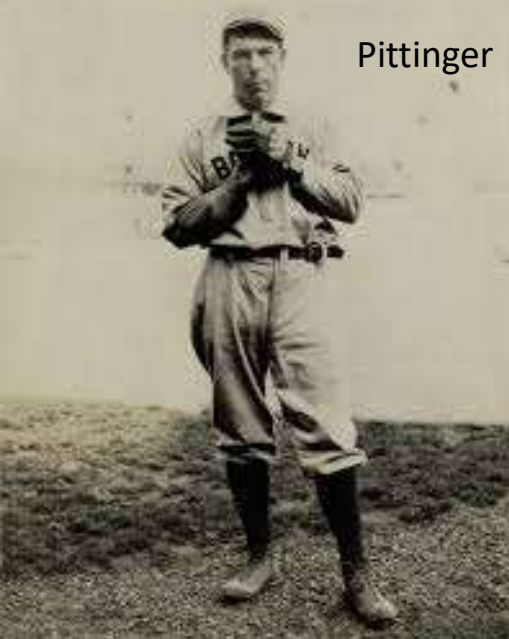
U-TCB903 - Waukesha Freeman - Player Pitching

10 Pitchers	Tm	Lg	W	L	PCT	SV	ERA	G	GS	CG	SHO	QS	IP	H	R	ER	HR	SO	BB
KLOBEDANZ, F.	WA	TCBA	1	0	1.000	0	1.46	4	0	0	0	0	12.1	7	3	2	1	8	0
PITTINGER, T.	WA	TCBA	19	10	.655	2	2.15	34	29	26	4	15	264.1	223	87	63	4	125	61
JOSS, A.	WA	TCBA	14	14	.500	0	2.26	31	28	26	4	16	246.2	212	96	62	2	140	69
DINNEEN, B.	WA	TCBA	11	18	.379	0	3.09	31	31	24	0	17	259.1	252	114	89	4	138	82
ST. VRAIN, J.	WA	TCBA	3	3	.500	0	4.18	10	5	5	0	2	51.2	47	30	24	2	43	15
MILLER, R.	WA	TCBA	9	18	.333	0	4.29	28	27	19	2	11	216.1	285	132	103	4	80	70
CARRICK, B.	WA	TCBA	2	5	.286	0	4.88	15	7	6	0	1	72.0	99	54	39	0	27	20
YERKES, S.	WA	TCBA	9	17	.346	0	5.46	27	26	19	0	6	227.2	302	171	138	0	97	74
HARDY, A.	WA	TCBA	0	1	.000	0	6.14	4	1	1	0	0	14.2	18	11	10	0	8	14
STIMMEL, A.	WA	TCBA	0	0	-	1	6.57	7	0	0	0	0	12.1	17	10	9	1	5	6
Waukesha Freeman			68	86	.442	3	3.52	191	154	126	10	68	1377.1	1462	708	539	18	671	411

10 Pitchers	Tm	Lg	SUP/9	R/9	ERA	BF/9	BR/9	H/9	BB/9	SO/9	HR/9	ERPT	OBA	BF	BR	IBB	HB	WP	BK
KLOBEDANZ, F.	WA	TCBA	.0	2.19	1.46	32.8	5.8	5.1	.0	5.8	.73	3.0	.167	45	8	0	1	0	0
PITTINGER, T.	WA	TCBA	4.2	2.96	2.15	36.7	9.9	7.6	2.0	4.3	.14	43.8	.227	1077	290	1	7	3	0
JOSS, A.	WA	TCBA	4.1	3.50	2.26	37.1	10.4	7.7	2.3	5.1	.07	37.6	.231	1018	286	5	10	3	1
DINNEEN, B.	WA	TCBA	3.0	3.96	3.09	38.6	11.9	8.7	2.8	4.8	.14	15.8	.255	1112	344	0	10	3	0
ST. VRAIN, J.	WA	TCBA	2.1	5.23	4.18	38.7	11.1	8.2	2.6	7.5	.35	-3.1	.236	222	64	0	2	2	0
MILLER, R.	WA	TCBA	4.3	5.49	4.29	41.1	15.0	11.9	2.9	3.3	.17	-15.6	.320	988	361	0	6	6	1
CARRICK, B.	WA	TCBA	2.6	6.75	4.88	42.0	15.8	12.4	2.5	3.4	.00	-9.9	.331	336	126	0	7	1	0
YERKES, S.	WA	TCBA	4.3	6.76	5.46	41.5	15.1	11.9	2.7	3.8	.00	-46.0	.320	1051	383	5	12	2	0
HARDY, A.	WA	TCBA	.0	6.75	6.14	43.6	19.6	11.0	8.6	4.9	.00	-4.1	.316	71	32	0	0	1	0
STIMMEL, A.	WA	TCBA	.0	7.30	6.57	43.8	16.8	12.4	4.4	3.6	.73	-4.0	.321	60	23	0	0	0	0
Waukesha Freeman			3.7	4.63	3.52	39.1	12.5	9.6	2.6	4.4	.12	17.4	.272	5980	1917	11	55	21	2

U-TCB903 - Waukesha Freeman - Player Batting

27 Players	Tm	Lg	AVG	G	AB	R	H	2B	3B	HR	TB	RBI	SO	BB	ASB	SB	CS	SBP	GDP
STIMMEL, A.	WA	TCBA	1.000	7	2	0	2	1	0	0	3	0	0	0	0	0	0	-	0
MCALIEER, J.	WA	TCBA	.667	3	6	0	4	0	0	0	4	1	0	0	0	0	0	-	0
CROSS, L.	WA	TCBA	.342	148	606	106	207	49	11	0	278	85	54	40	24	16	8	66.7	11
KLOBEDANZ, F.	WA	TCBA	.333	4	3	1	1	1	0	0	2	3	0	0	0	0	0	-	0
KLING, J.	WA	TCBA	.332	109	401	51	133	22	3	0	161	56	20	31	42	32	10	76.2	3
CARRICK, B.	WA	TCBA	.318	16	22	5	7	1	0	0	8	1	6	0	0	0	0	-	1
WAGNER, H.	WA	TCBA	.312	144	541	77	169	32	16	1	236	61	70	63	64	44	20	68.8	7
ISEBELL, F.	WA	TCBA	.276	150	597	80	165	18	8	5	214	90	58	18	86	61	25	70.9	5
DAVIS, L.	WA	TCBA	.262	71	221	37	58	12	6	0	82	25	16	35	12	10	2	83.3	3
BARCLAY, G.	WA	TCBA	.253	150	598	79	151	17	1	4	182	70	51	36	41	23	18	56.1	7
MERRITT, G.	WA	TCBA	.250	5	12	0	3	1	0	0	4	4	1	0	0	0	0	-	0
Sajdak, K.	WA	TCBA	.225	107	387	30	87	13	2	2	110	32	86	29	1	0	1	.0	8
MCGRAW, J.	WA	TCBA	.203	50	172	36	35	4	3	1	48	13	11	37	10	6	4	60.0	1
CHILDS, P.	WA	TCBA	.181	148	519	45	94	7	0	0	101	23	70	66	5	3	2	60.0	9
LAMER, P.	WA	TCBA	.174	23	46	3	8	0	0	0	8	3	4	1	0	0	0	-	2
O'NEILL, J.	WA	TCBA	.133	60	158	8	21	2	0	0	23	8	19	7	1	1	1	100.0	2
CLAY, B.	WA	TCBA	.127	71	252	10	32	0	0	0	32	20	18	3	1	0	1	.0	3
RYAN, J.	WA	TCBA	.121	43	140	8	17	1	0	0	18	11	18	3	1	0	1	.0	1
YERKES, S.	WA	TCBA	.113	27	80	12	9	1	0	0	10	6	17	11	0	0	0	-	2
PITTINGER, T.	WA	TCBA	.102	34	98	6	10	0	0	0	10	8	17	3	0	0	0	-	4
JOSS, A.	WA	TCBA	.098	31	92	8	9	1	1	0	12	6	14	7	0	0	0	-	1
MILLER, R.	WA	TCBA	.098	28	82	7	8	1	2	0	13	3	20	0	0	0	0	-	1
JORDAN, S.	WA	TCBA	.090	40	100	1	9	0	0	0	9	5	14	1	0	0	0	-	2
DINNEEN, B.	WA	TCBA	.024	31	85	6	2	0	0	0	2	3	12	7	4	1	3	25.0	2
ST. VRAIN, J.	WA	TCBA	.000	10	15	1	0	0	0	0	0	1	2	2	0	0	0	-	1
BROWN, F.	WA	TCBA	.000	4	9	0	0	0	0	0	0	0	1	0	0	0	0	-	0
HARDY, A.	WA	TCBA	.000	4	4	0	0	0	0	0	0	0	2	0	0	0	0	-	0
Waukesha Freeman			.236	1518	5248	617	1241	184	53	13	1570	538	601	400	292	197	95	67.5	76



Pittinger



Joss



WAUKESHA

Cross



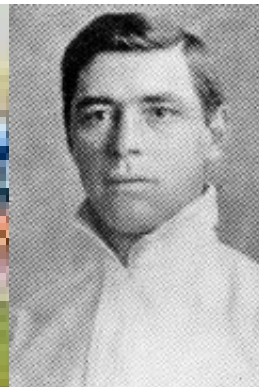
Isbell



NAPS



CLEVELAND NAPS



1-Johnny Evers
5-John McMakin

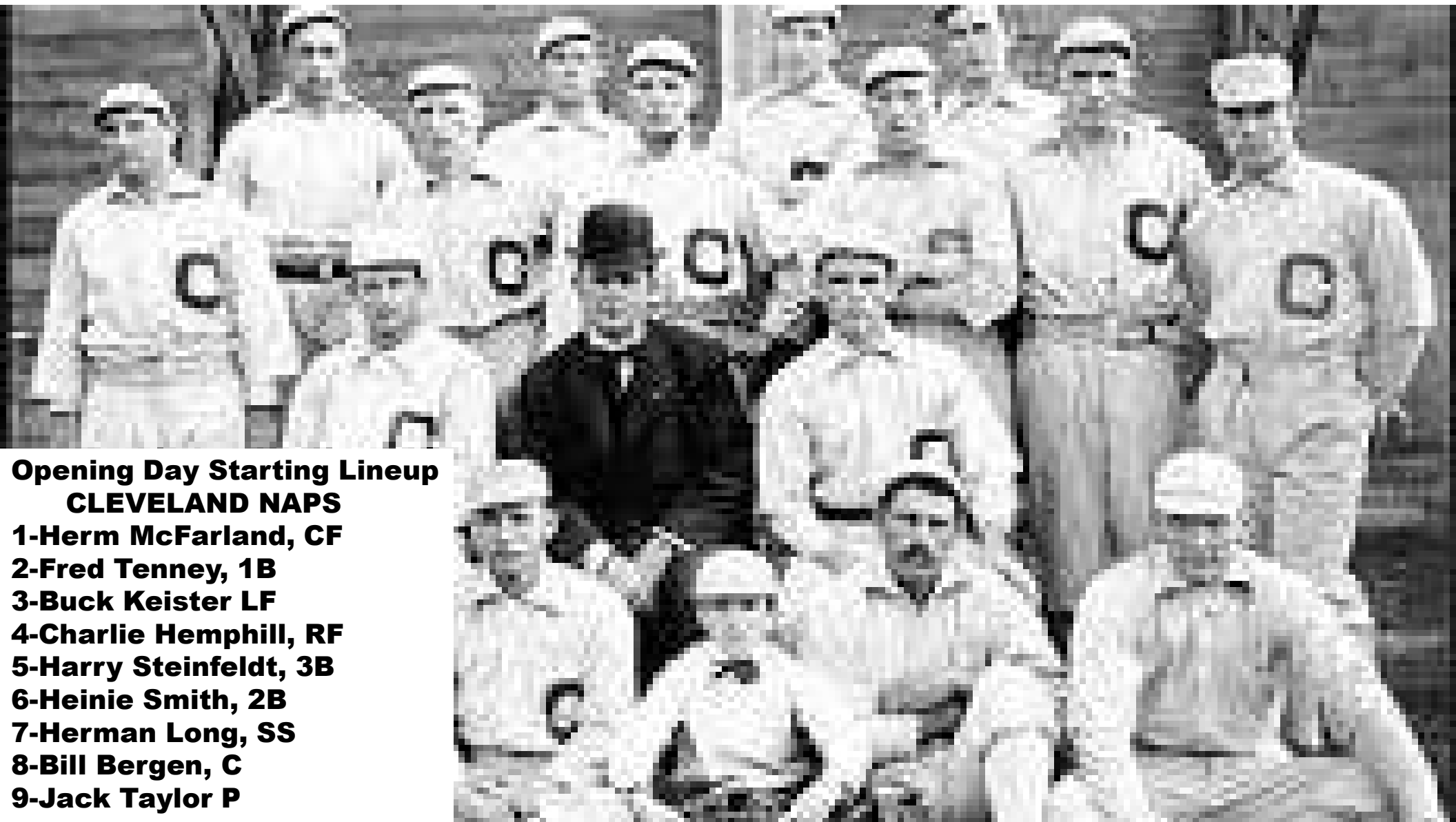
2-Otto Hess
6-Sam McMackin

3-Bunk Congalton
7-Rube Ward

4-Peaches Graham
8-Ed Fisher



Cleveland Naps Draft Picks



Opening Day Starting Lineup

CLEVELAND NAPS

- 1-Herm McFarland, CF**
- 2-Fred Tenney, 1B**
- 3-Buck Keister LF**
- 4-Charlie Hemphill, RF**
- 5-Harry Steinfeldt, 3B**
- 6-Heinie Smith, 2B**
- 7-Herman Long, SS**
- 8-Bill Bergen, C**
- 9-Jack Taylor P**

**Opening Day Starting Lineup
CLEVELAND NAPS**



U-TCB903 - Cleveland Naps - Player Batting

24 Players	Tm	Lg	AVG	G	AB	R	H	2B	3B	HR	TB	RBI	SO	BB	ASB	SB	CS	SBP	GDP
MCFARLAND, H.	CL	TCBA	.369	98	293	79	108	27	8	4	163	67	19	40	16	10	6	62.5	1
HEMPHILL, C.	CL	TCBA	.355	130	498	96	177	16	9	3	220	88	35	46	39	27	12	69.2	4
TENNEY, F.	CL	TCBA	.336	144	535	112	180	12	5	3	211	49	54	87	34	23	11	67.6	7
GRAHAM, P.	CL	TCBA	.333	19	6	0	2	0	0	0	2	4	0	2	0	0	0	-	0
KEISTER, B.	CL	TCBA	.310	126	509	70	158	42	9	8	242	114	31	19	23	14	9	60.9	6
STEINFELDT, H.	CL	TCBA	.292	130	500	59	146	21	6	0	179	72	49	27	18	10	8	55.6	4
WARD, R.	CL	TCBA	.289	19	38	4	11	1	0	0	12	6	4	1	0	0	0	-	1
TAYLOR, J.	CL	TCBA	.286	42	133	24	38	5	0	0	43	12	8	13	1	1	0	100.0	1
Hobbs, R.	CL	TCBA	.262	99	302	25	79	6	0	3	94	36	51	16	0	0	0	-	7
LONG, H.	CL	TCBA	.260	137	550	78	143	12	0	4	167	57	66	35	29	17	12	58.6	12
EVERS, J.	CL	TCBA	.260	39	77	5	20	0	0	0	20	6	9	0	0	0	0	-	1
SMITH, H.	CL	TCBA	.255	147	581	68	148	28	2	0	180	74	47	14	49	34	15	69.4	11
MERCER, W.	CL	TCBA	.248	36	101	11	25	6	0	0	31	5	23	2	2	1	1	50.0	3
KAHOE, M.	CL	TCBA	.242	64	190	17	46	9	1	0	57	19	25	5	3	3	0	100.0	2
CONGALTON, B.	CL	TCBA	.231	107	346	39	80	12	0	6	110	35	38	29	7	4	3	57.1	5
BERNHARD, B.	CL	TCBA	.213	35	94	7	20	3	0	0	23	12	11	2	0	0	0	-	2
WRIGHT, C.	CL	TCBA	.211	21	19	2	4	0	2	0	8	0	0	0	0	0	0	-	1
BERGEN, B.	CL	TCBA	.209	126	407	46	85	11	3	0	102	26	66	27	2	1	1	50.0	8
MCMACKIN, S.	CL	TCBA	.200	10	5	0	1	0	0	0	1	0	1	0	0	0	0	-	0
MATHEWSON, C.	CL	TCBA	.180	40	111	15	20	3	0	1	26	7	21	10	3	1	2	33.3	3
HILDEBRAND, R.	CL	TCBA	.143	65	84	13	12	0	0	0	12	4	14	12	0	0	0	-	0
HESS, O.	CL	TCBA	.143	11	7	0	1	0	0	0	1	0	1	1	0	0	0	-	0
MCMAKIN, J.	CL	TCBA	.000	10	3	2	0	0	0	0	0	0	0	2	0	0	0	-	0
FISHER, E.	CL	TCBA	.000	3	2	0	0	0	0	0	0	0	0	0	0	0	0	-	0
Cleveland Naps			.279	1658	5391	772	1504	214	45	32	1904	693	573	390	226	146	80	64.6	79



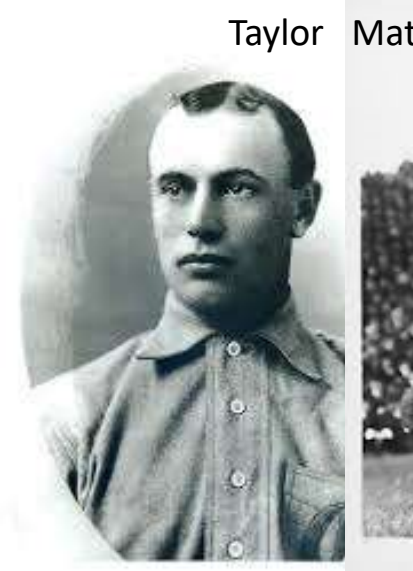
Tenney



10:51 PM No Selections Made

9 Pitchers	Tm	Lg	W	L	PCT	SV	ERA	G	GS	CG	SHO	QS	IP	H	R	ER	HR	SO	BB
FISHER, E.	CL	TCBA	1	0	1.000	0	.00	3	0	0	0	0	4.0	2	1	0	0	2	0
BERNHARD, B.	CL	TCBA	24	6	.800	2	1.42	35	30	24	5	22	278.0	168	68	44	0	113	31
TAYLOR, J.	CL	TCBA	32	9	.780	0	1.93	42	42	34	10	32	364.0	252	99	78	1	99	50
MERCER, W.	CL	TCBA	20	10	.667	0	2.53	36	33	21	3	18	277.0	247	114	78	3	67	68
MCMACKIN, S.	CL	TCBA	3	4	.429	1	2.61	10	1	1	0	0	20.2	20	10	6	0	13	5
MATHEWSON, C.	CL	TCBA	18	19	.486	0	3.05	40	40	28	5	18	324.1	309	173	110	10	181	87
MCMAKIN, J.	CL	TCBA	0	1	.000	0	3.10	9	1	1	0	0	20.1	16	7	7	1	8	6
HESS, O.	CL	TCBA	0	0	-	0	3.38	11	0	0	0	0	26.2	39	14	10	0	13	13
WRIGHT, C.	CL	TCBA	2	3	.400	0	6.38	21	5	2	0	1	67.2	97	60	48	5	39	36
Cleveland Naps			100	52	.658	3	2.48	207	152	111	23	91	1382.2	1150	546	381	20	535	296

9 Pitchers	Tm	Lg	SUP/9	R/9	ERA	BF/9	BR/9	H/9	BB/9	SO/9	HR/9	ERPT	OBA	BF	BR	IBB	HB	WP	BK
FISHER, E.	CL	TCBA	.0	2.25	.00	33.8	4.5	4.5	.0	4.5	.00	1.6	.143	15	2	0	0	0	0
BERNHARD, B.	CL	TCBA	4.0	2.20	1.42	34.1	6.7	5.4	.9	3.7	.00	68.3	.169	1052	207	2	10	2	0
TAYLOR, J.	CL	TCBA	5.7	2.45	1.93	35.0	7.9	6.2	1.2	2.4	.02	69.0	.190	1415	319	3	20	1	0
MERCER, W.	CL	TCBA	5.4	3.70	2.53	37.6	10.6	8.0	2.1	2.2	.10	33.9	.234	1157	326	2	13	2	0
MCMACKIN, S.	CL	TCBA	.4	4.35	2.61	37.9	10.9	8.7	2.2	5.7	.00	2.3	.270	87	25	0	0	0	0
MATHEWSON, C.	CL	TCBA	4.7	4.80	3.05	38.3	11.4	8.6	2.4	5.0	.28	21.0	.248	1381	410	1	15	5	3
MCMAKIN, J.	CL	TCBA	.4	3.10	3.10	37.2	9.7	7.1	2.7	3.5	.44	1.2	.211	84	22	0	0	0	0
HESS, O.	CL	TCBA	.0	4.72	3.38	44.2	18.2	13.2	4.4	4.4	.00	.8	.348	131	54	0	2	2	0
WRIGHT, C.	CL	TCBA	2.5	7.98	6.38	45.2	18.5	12.9	4.8	5.2	.67	-20.7	.331	340	139	0	6	5	0
Cleveland Naps			4.6	3.55	2.48	36.9	9.8	7.5	1.9	3.5	.13	177.5	.221	5662	1504	8	66	17	3



Taylor



Matty



South Starrucca Ainspans



1-George Mullin
5-Joe Stanley

2-Red Dooin
6-Bob Blewett

3-Jimmy Sebring
7-Tad Quinn

4-Wish Egan
8-PASS



South Starrucca Ainspans Draft Picks



**1-Jack Doyle 1B 2-Pat Carney, LF 3-Danny Murphy, 2B
4-Heinie Peitz, 3B 5-John Dobbs, RF 6-Fred Parent, SS
7-Billy Lauder, CF 8-Red Dooin, C 9-Cy Young, P**

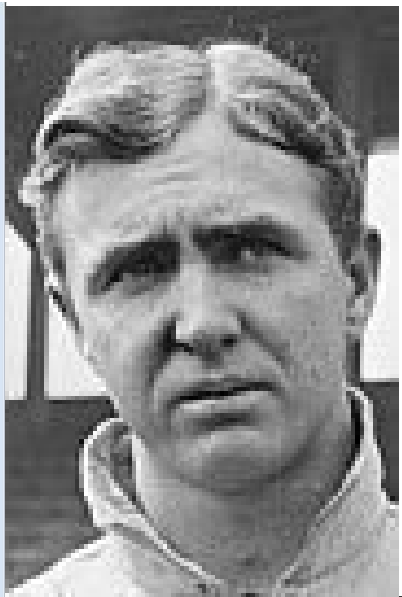
**South Starrucca Ainspans
Opening Day Starting Lineup**



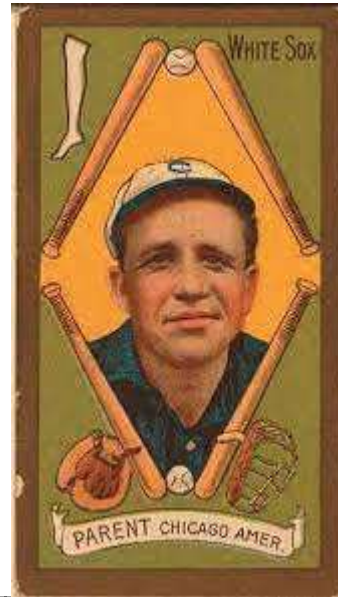
**South Starrucca Ainspans
Opening Day Starting Lineup**



23 Players	Tm	Lg	AVG	G	AB	R	H	2B	3B	HR	TB	RBI	SO	BB	ASB	SB	CS	SBP	GDP
CARNEY, P.	SO	TCBA	.326	141	565	94	184	20	3	1	213	73	44	42	33	24	9	72.7	5
MURPHY, D.	SO	TCBA	.312	84	314	40	98	9	9	0	125	45	28	15	14	12	2	85.7	3
PEITZ, H.	SO	TCBA	.311	124	441	66	137	36	2	0	177	84	35	30	11	4	7	36.4	4
JONES, D.	SO	TCBA	.306	83	291	57	89	10	1	0	101	23	34	49	14	10	4	71.4	2
MULLIN, G.	SO	TCBA	.300	41	140	13	42	7	4	0	57	23	9	8	2	0	2	.0	5
DOBBS, J.	SO	TCBA	.298	125	500	74	149	18	4	0	175	63	57	43	13	7	6	53.8	6
SEBRING, J.	SO	TCBA	.283	46	46	9	13	4	3	0	23	10	4	5	0	0	0	-	2
PARENT, F.	SO	TCBA	.275	154	599	65	165	33	10	4	230	78	48	45	14	12	2	85.7	11
STANLEY, J.	SO	TCBA	.273	9	11	2	3	0	0	0	3	4	2	0	0	0	0	-	0
SMITH, A.	SO	TCBA	.263	82	262	30	69	3	0	0	72	20	26	28	5	3	2	60.0	9
DOYLE, J.	SO	TCBA	.263	141	560	92	147	35	3	0	188	55	44	47	20	12	8	60.0	8
HUGHES, L.	SO	TCBA	.259	32	81	11	21	5	0	0	26	2	7	2	1	1	0	100.0	1
DELAHANTY, J.	SO	TCBA	.258	42	89	9	23	3	0	0	26	9	11	8	0	0	0	-	2
LAUDER, B.	SO	TCBA	.258	143	524	56	135	34	1	0	171	62	59	24	17	14	3	82.4	6
Fiehl, S.	SO	TCBA	.230	64	161	14	37	4	1	2	49	19	28	14	0	0	0	-	4
DOOIN, R.	SO	TCBA	.228	151	553	44	126	9	2	0	139	40	78	18	7	5	2	71.4	9
YOUNG, C.	SO	TCBA	.222	45	135	16	30	0	2	1	37	13	23	6	0	0	0	-	1
MORRISSEY, D.	SO	TCBA	.200	28	15	0	3	0	0	0	3	2	4	0	0	0	0	-	0
EGAN, W.	SO	TCBA	.200	20	5	1	1	0	0	0	1	0	0	0	0	0	0	-	0
QUINN, T.	SO	TCBA	.143	15	35	3	5	1	0	0	6	1	4	0	0	0	0	-	0
SCHAEFER, G.	SO	TCBA	.125	45	96	11	12	1	0	0	13	4	13	7	2	1	1	50.0	1
POOLE, E.	SO	TCBA	.086	28	70	7	6	0	0	0	6	5	4	2	0	0	0	-	2
BLEWETT, B.	SO	TCBA	.063	14	16	0	1	0	0	0	1	0	3	0	0	0	0	-	1
South Starrucca Ainspans			.272	1657	5509	714	1496	232	45	8	1842	635	565	393	153	105	48	68.6	82

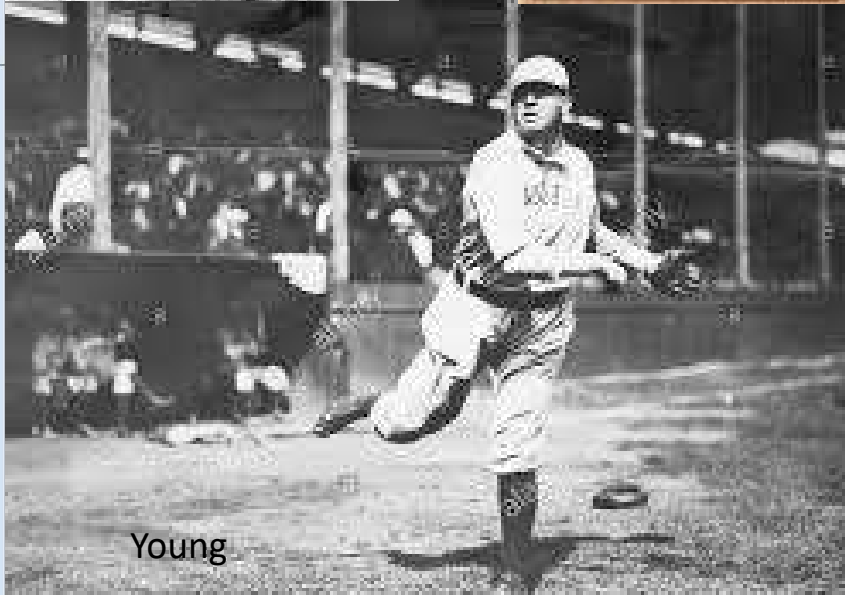


CARNEY



10 Pitchers	Tm	Lg	W	L	PCT	SV	ERA	G	GS	CG	SHO	QS	IP	H	R	ER	HR	SO	BB
YOUNG, C.	SO	TCBA	23	17	.575	1	1.85	45	40	30	7	25	355.2	272	114	73	0	216	67
EGAN, W.	SO	TCBA	3	1	.750	1	2.05	19	0	0	0	0	30.2	23	13	7	1	6	11
POOLE, E.	SO	TCBA	9	12	.429	0	2.65	27	23	13	0	11	179.2	152	91	53	3	74	78
MORRISSEY, D.	SO	TCBA	6	5	.545	7	3.06	28	1	1	0	0	47.0	42	20	16	2	11	22
Fiehl, S.	SO	TCBA	2	1	.667	0	3.86	12	4	3	1	2	42.0	48	23	18	0	21	19
MULLIN, G.	SO	TCBA	19	18	.514	0	3.98	40	39	22	1	13	319.0	334	181	141	3	169	134
BLEWETT, B.	SO	TCBA	2	2	.500	1	4.15	14	8	2	0	0	52.0	60	36	24	0	17	18
HUGHES, L.	SO	TCBA	8	11	.421	2	4.55	31	26	13	2	7	198.0	220	126	100	2	125	57
DELAHANTY, J.	SO	TCBA	1	2	.333	0	5.48	15	2	2	0	0	65.2	106	58	40	0	25	24
QUINN, T.	SO	TCBA	1	11	.083	0	9.20	15	11	6	0	3	91.0	169	118	93	10	72	29
South Starrucca Ainspans			74	80	.481	12	3.68	246	154	92	11	61	1380.2	1426	780	565	21	736	459

10 Pitchers	Tm	Lg	SUP/9	R/9	ERA	BF/9	BR/9	H/9	BB/9	SO/9	HR/9	ERPT	OBA	BF	BR	IBB	HB	WP	BK
YOUNG, C.	SO	TCBA	4.2	2.88	1.85	36.1	8.6	6.9	1.6	5.5	.00	70.7	.206	1425	341	5	7	1	0
EGAN, W.	SO	TCBA	.0	3.82	2.05	37.3	9.7	6.8	2.9	1.8	.29	5.4	.225	127	33	1	0	0	0
POOLE, E.	SO	TCBA	4.9	4.56	2.65	39.2	12.0	7.6	3.9	3.7	.15	19.6	.224	782	239	0	9	2	0
MORRISSEY, D.	SO	TCBA	.0	3.83	3.06	39.4	12.3	8.0	3.6	2.1	.38	3.0	.244	206	64	3	3	0	0
Fiehl, S.	SO	TCBA	3.6	4.93	3.86	41.4	15.0	10.3	3.9	4.5	.00	-1.0	.284	193	70	1	4	0	0
MULLIN, G.	SO	TCBA	4.9	5.11	3.98	40.6	13.3	9.4	3.8	4.8	.08	-12.1	.267	1438	473	1	6	14	0
BLEWETT, B.	SO	TCBA	3.5	6.23	4.15	41.0	13.5	10.4	2.9	2.9	.00	-3.0	.279	237	78	1	1	0	0
HUGHES, L.	SO	TCBA	5.4	5.73	4.55	40.1	13.0	10.0	2.4	5.7	.09	-20.0	.279	882	285	5	13	6	0
DELAHANTY, J.	SO	TCBA	.5	7.95	5.48	44.7	18.0	14.5	3.3	3.4	.00	-13.5	.359	326	131	0	1	0	0
QUINN, T.	SO	TCBA	4.2	11.67	9.20	46.4	19.6	16.7	2.9	7.1	.99	-56.2	.399	469	198	0	0	0	0
South Starrucca Ainspans			4.2	5.08	3.68	39.7	12.5	9.3	2.9	4.8	.14	-7.3	.263	6085	1912	17	44	23	0



Young

ISLANDERS



BASEBALL



DS ON

stand

1-Bob Ewing
5-Jim Hackett

2-Lew Drill
5a-Jim Porter

3-Ernie Courtney
6-Dike Varney

4-Larry Schlafly
7-Pat Deisel

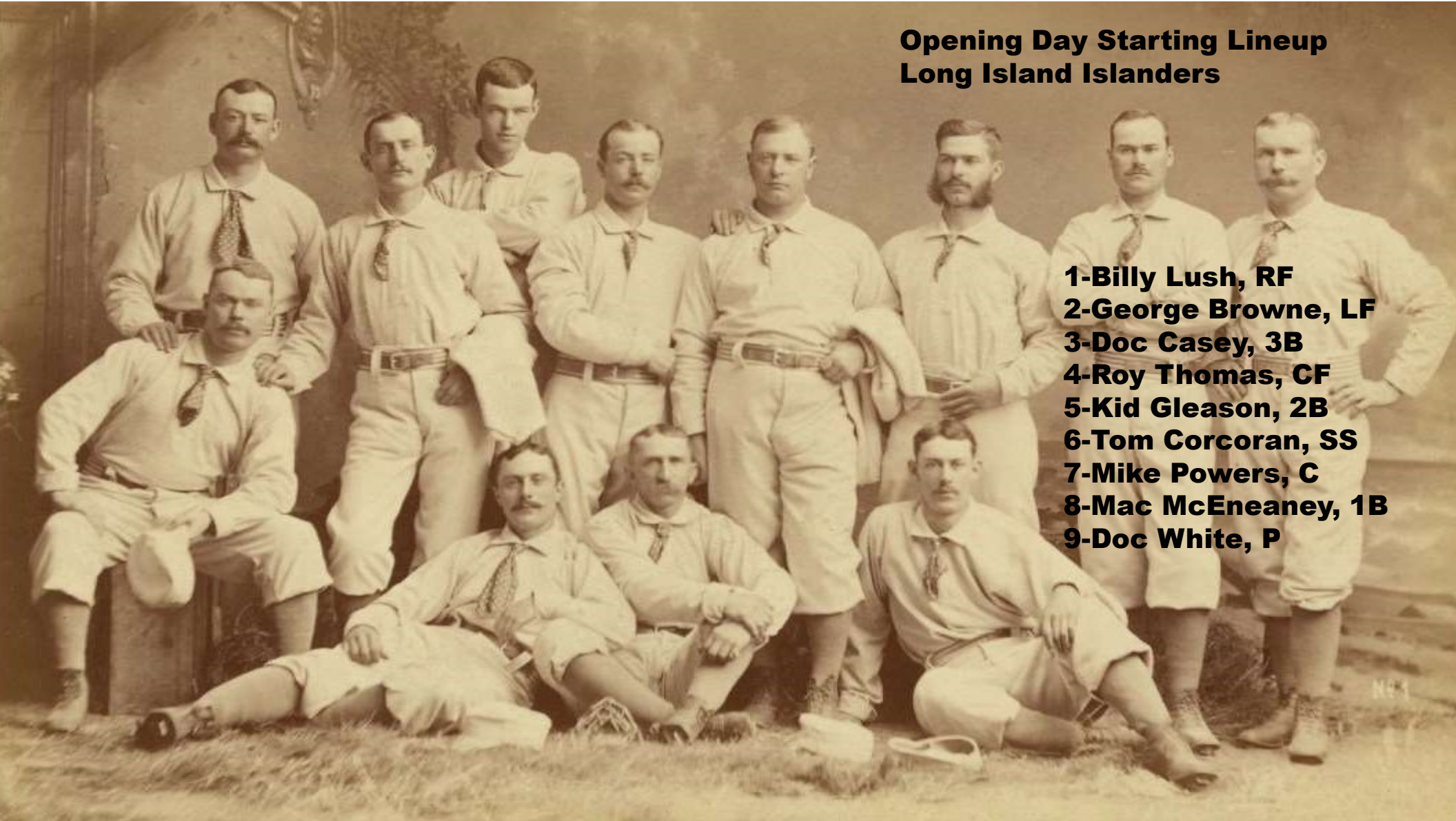
8-Lou Polchow



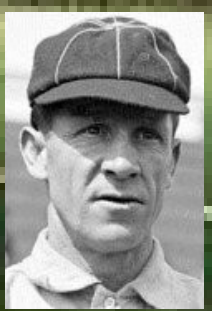
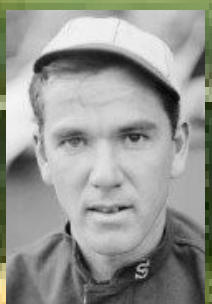
Long Island Islanders Draft Picks

**Opening Day Starting Lineup
Long Island Islanders**

- 1-Billy Lush, RF**
- 2-George Browne, LF**
- 3-Doc Casey, 3B**
- 4-Roy Thomas, CF**
- 5-Kid Gleason, 2B**
- 6-Tom Corcoran, SS**
- 7-Mike Powers, C**
- 8-Mac McEneaney, 1B**
- 9-Doc White, P**



Opening Day Starting Lineup Long Island Islanders



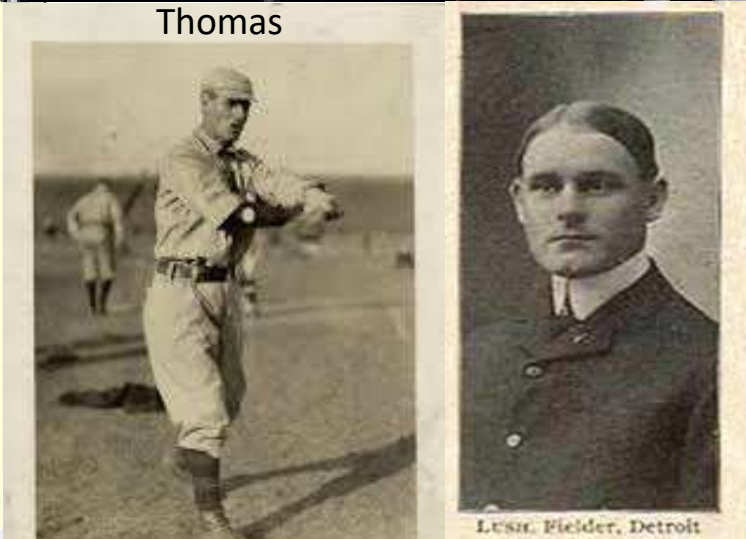
9 Pitchers	Tm	Lg	W	L	PCT	SV	ERA	G	GS	CG	SHO	QS	IP	H	R	ER	HR	SO	BB
WHITE, D.	LI	TCBA	23	15	.605	0	3.16	42	40	29	5	25	330.2	318	144	116	6	224	92
McEaney, J.	LI	TCBA	0	1	.000	2	3.20	19	0	0	0	0	19.2	26	13	7	0	5	13
HOWELL, H.	LI	TCBA	14	17	.452	0	3.77	35	30	20	1	10	243.2	318	145	102	4	70	57
SPARKS, T.	LI	TCBA	11	18	.379	1	3.86	35	31	23	1	12	275.1	299	144	118	8	146	76
PORTER, J.	LI	TCBA	8	15	.348	0	4.12	32	24	15	3	9	190.0	219	112	87	0	61	84
POLCHOW, L.	LI	TCBA	3	9	.250	1	4.16	27	11	3	0	3	93.0	122	63	43	2	29	39
EWING, B.	LI	TCBA	2	11	.154	1	4.76	24	13	6	0	2	117.1	134	74	62	1	81	49
VARNEY, D.	LI	TCBA	2	2	.500	1	5.59	26	4	1	0	1	46.2	69	39	29	1	27	19
HACKETT, J.	LI	TCBA	1	2	.333	0	5.68	24	1	1	0	0	57.0	90	46	36	0	20	30
Long Island Islanders			64	90	.416	6	3.93	264	154	98	10	62	1373.1	1595	780	600	22	663	459

9 Pitchers	Tm	Lg	SUP/9	R/9	ERA	BF/9	BR/9	H/9	BB/9	SO/9	HR/9	ERPT	OBA	BF	BR	IBB	HB	WP	BK
WHITE, D.	LI	TCBA	5.4	3.92	3.16	37.8	11.5	8.7	2.4	6.1	.16	17.6	.252	1390	423	2	15	9	0
McEaney, J.	LI	TCBA	.0	5.95	3.20	44.8	17.8	11.9	5.5	2.3	.00	.9	.313	98	39	1	1	0	0
HOWELL, H.	LI	TCBA	5.0	5.36	3.77	40.8	14.1	11.7	2.1	2.6	.15	-3.6	.313	1105	381	1	7	6	0
SPARKS, T.	LI	TCBA	4.8	4.71	3.86	38.8	12.5	9.8	2.4	4.8	.26	-6.8	.280	1187	382	3	10	0	0
PORTER, J.	LI	TCBA	3.4	5.31	4.12	40.7	14.4	10.4	4.0	2.9	.00	-10.3	.288	859	303	0	0	4	0
POLCHOW, L.	LI	TCBA	2.3	6.10	4.16	42.3	15.7	11.8	3.8	2.8	.19	-5.4	.317	437	162	0	1	0	0
EWING, B.	LI	TCBA	2.8	5.68	4.76	41.5	14.1	10.3	3.6	6.2	.08	-14.6	.279	541	184	2	3	2	0
VARNEY, D.	LI	TCBA	1.7	7.52	5.59	44.7	17.7	13.3	3.7	5.2	.19	-10.1	.340	232	92	0	4	1	0
HACKETT, J.	LI	TCBA	.6	7.26	5.68	45.5	19.9	14.2	4.7	3.2	.00	-13.0	.360	288	126	0	6	3	0
Long Island Islanders			4.1	5.11	3.93	40.2	13.7	10.5	2.9	4.3	.14	-45.2	.290	6137	2092	9	47	25	0



11:09 PM U-TCB903 TCBA Origins 1902 MLB TCBA Origins 1902 MLB Don Mahley Division Long Island Islanders

22 Players	Tm	Lg	AVG	G	AB	R	H	2B	3B	HR	TB	RBI	SO	BB	ASB	SB	CS	SBP	GDP
DEISEL, P.	LI	TCBA	1.000	8	3	0	3	0	0	0	3	0	0	3	0	0	0	-	0
SCHLAFLY, H.	LI	TCBA	.424	21	33	8	14	1	3	0	21	9	1	7	3	1	2	33.3	0
HOWELL, H.	LI	TCBA	.394	37	94	17	37	7	3	1	53	12	11	7	1	0	1	.0	1
BROWNE, G.	LI	TCBA	.292	118	483	74	141	15	9	0	174	58	53	31	24	15	9	62.5	4
THOMAS, R.	LI	TCBA	.291	154	567	97	165	7	5	0	182	70	58	113	31	20	11	64.5	10
CASEY, D.	LI	TCBA	.284	144	563	80	160	23	7	2	203	93	51	56	17	12	5	70.6	11
GLEASON, K.	LI	TCBA	.279	139	542	65	151	18	4	0	177	80	70	38	28	16	12	57.1	6
WHITE, D.	LI	TCBA	.273	44	132	15	36	3	0	1	42	11	20	4	5	2	3	40.0	3
COURTNEY, E.	LI	TCBA	.261	107	353	46	92	7	1	0	101	23	56	33	9	2	7	22.2	7
POWERS, M.	LI	TCBA	.253	78	269	28	68	9	2	4	93	40	26	16	0	0	0	-	3
CORCORAN, T.	LI	TCBA	.248	148	584	70	145	28	6	0	185	82	37	28	21	13	8	61.9	10
CRIGER, L.	LI	TCBA	.247	90	312	38	77	18	9	0	113	44	34	22	3	0	3	.0	6
McEaney, J.	LI	TCBA	.237	136	490	46	116	20	4	2	150	61	101	30	2	2	0	100.0	11
LUSH, B.	LI	TCBA	.236	130	499	109	118	9	2	5	146	36	71	104	42	30	12	71.4	1
DRILL, L.	LI	TCBA	.232	75	185	25	43	6	2	0	53	23	16	30	6	3	3	50.0	5
HACKETT, J.	LI	TCBA	.222	25	18	2	4	1	0	0	5	1	2	0	0	0	0	-	0
PORTER, J.	LI	TCBA	.161	32	62	5	10	0	0	0	10	5	9	1	0	0	0	-	1
SPARKS, T.	LI	TCBA	.149	35	87	5	13	5	0	0	18	11	14	15	0	0	0	-	4
HAZLETON, D.	LI	TCBA	.133	34	75	5	10	0	0	0	10	5	8	8	0	0	0	-	3
EWING, B.	LI	TCBA	.088	25	34	2	3	1	1	0	6	2	10	1	0	0	0	-	0
POLCHOW, L.	LI	TCBA	.074	27	27	0	2	0	0	0	2	0	4	0	0	0	0	-	0
VARNEY, D.	LI	TCBA	.000	26	6	0	0	0	0	0	0	0	0	0	0	0	0	-	0
Long Island Islanders			.260	1633	5418	737	1408	178	58	15	1747	666	652	547	192	116	76	60.4	86







1-Joe Tinker
5-Jack Thoney

2-Ed Gremminger
6-Ed Walker

3-Roy Evans
7-Red Long

4-Pete LePine
8-Ernie Ross

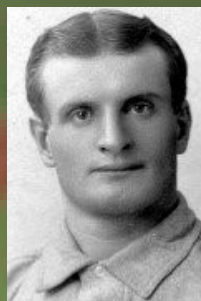


Newton Buccs Draft Picks



NEWTON BUCC STARTING LINEUP OPENING DAY

1-Dan McGann, 1B 2-Dave Fultz, RF 3-Ginger Beaumont, CF 4-Sam Mertes, LF
5-Ed Gremminger, 3B 6-Joe Tinker, SS 7-Hobe Ferris, 2B 8-Fritz Buelow, C 9-Rube Waddell, P



**NEWTON BUCC STARTING
LINEUP OPENING DAY**

10 Pitchers	Tm	Lg	W	L	PCT	SV	ERA	G	GS	CG	SHO	QS	IP	H	R	ER	HR	SO	BB
WADDELL, R.	NB	TCBA	34	9	.791	1	1.68	45	41	29	9	31	342.1	221	85	64	3	238	64
LEEVEER, S.	NB	TCBA	20	8	.714	0	2.56	31	31	23	2	18	263.2	239	96	75	5	122	39
LEPINE, P.	NB	TCBA	2	0	1.000	0	3.00	7	0	0	0	0	6.0	7	2	2	0	4	3
HUGHES, J.	NB	TCBA	18	9	.667	0	3.27	31	30	21	1	15	253.1	252	113	92	3	121	53
NEWTON, D.	NB	TCBA	16	16	.500	1	3.56	36	31	20	2	13	270.1	250	141	107	5	127	108
EVANS, R.	NB	TCBA	6	9	.400	3	3.74	35	19	9	1	8	173.1	183	92	72	4	53	67
WALKER, E.	NB	TCBA	2	1	.667	1	4.67	22	1	0	0	0	27.0	42	19	14	1	11	11
Beeman, J.	NB	TCBA	0	0	-	0	5.93	20	0	0	0	0	27.1	59	27	18	0	16	13
LONG, R.	NB	TCBA	0	1	.000	0	6.00	2	1	1	0	0	9.0	13	7	6	0	7	1
ROSS, E.	NB	TCBA	2	1	.667	1	10.59	20	0	0	0	0	17.0	41	22	20	0	6	4
Newton Buccs			100	54	.649	7	3.04	249	154	103	15	85	1389.1	1307	604	470	21	705	363

10 Pitchers	Tm	Lg	SUP/9	R/9	ERA	BF/9	BR/9	H/9	BB/9	SO/9	HR/9	ERPT	OBA	BF	BR	IBB	HB	WP	BK
WADDELL, R.	NB	TCBA	5.3	2.23	1.68	35.0	7.7	5.8	1.6	6.3	.08	74.3	.180	1330	293	3	11	11	1
LEEVEER, S.	NB	TCBA	5.2	3.28	2.56	36.3	9.7	8.2	1.3	4.2	.17	31.5	.239	1064	283	2	7	5	0
LEPINE, P.	NB	TCBA	.0	3.00	3.00	39.0	16.5	10.5	4.5	6.0	.00	.4	.318	26	11	0	1	0	0
HUGHES, J.	NB	TCBA	5.2	4.01	3.27	38.2	11.0	9.0	1.6	4.3	.11	10.3	.256	1075	310	8	13	12	0
NEWTON, D.	NB	TCBA	4.6	4.69	3.56	39.5	12.4	8.3	3.6	4.2	.17	2.2	.241	1185	371	1	14	3	0
EVANS, R.	NB	TCBA	4.0	4.78	3.74	39.5	13.1	9.5	3.3	2.8	.21	-2.0	.273	761	252	3	5	4	0
WALKER, E.	NB	TCBA	1.3	6.33	4.67	43.0	17.7	14.0	3.7	3.7	.33	-3.1	.362	129	53	0	0	0	0
Beeman, J.	NB	TCBA	.0	8.89	5.93	52.7	24.4	19.4	4.3	5.3	.00	-7.0	.413	160	74	0	2	0	0
LONG, R.	NB	TCBA	6.0	7.00	6.00	43.0	14.0	13.0	1.0	7.0	.00	-2.4	.317	43	14	0	0	0	0
ROSS, E.	NB	TCBA	.0	11.65	10.59	50.3	24.4	21.7	2.1	3.2	.00	-13.1	.466	95	46	0	1	0	0
Newton Buccs			4.7	3.91	3.04	38.0	11.1	8.5	2.2	4.6	.14	91.2	.245	5868	1707	17	54	35	1

11:17 PM No Selections Made

24 Players	Tm	Lg	AVG	G	AB	R	H	2B	3B	HR	TB	RBI	SO	BB	ASB	SB	CS	SBP	GDP
ROSS, E.	NB	TCBA	.500	21	2	3	1	0	0	0	1	1	0	0	0	0	0	-	0
WALKER, E.	NB	TCBA	.400	22	10	1	4	0	0	0	4	0	1	0	0	0	0	-	0
BEAUMONT, G.	NB	TCBA	.355	148	592	91	210	16	3	0	232	95	73	33	47	33	14	70.2	12
MCGANN, D.	NB	TCBA	.332	136	561	95	186	22	15	0	238	59	49	31	39	30	9	76.9	5
WADDELL, R.	NB	TCBA	.331	45	142	25	47	10	2	2	67	19	17	7	2	1	1	50.0	4
FULTZ, D.	NB	TCBA	.305	150	555	108	169	28	5	0	207	62	61	70	53	35	18	66.0	5
LEPINE, P.	NB	TCBA	.303	86	89	16	27	2	2	1	36	7	10	7	4	3	1	75.0	1
MERTES, S.	NB	TCBA	.296	145	537	84	159	38	7	0	211	102	49	54	72	54	18	75.0	8
TINKER, J.	NB	TCBA	.276	146	544	69	150	22	6	1	187	74	45	33	42	30	12	71.4	6
FERRIS, H.	NB	TCBA	.262	127	474	57	124	20	16	6	194	71	68	25	10	6	4	60.0	6
MAGOON, G.	NB	TCBA	.253	62	158	29	40	5	1	0	47	24	8	16	7	5	2	71.4	1
LONG, R.	NB	TCBA	.250	2	4	1	1	0	0	0	1	2	0	0	0	0	0	-	0
GREMMINGER, E.	NB	TCBA	.249	139	515	61	128	23	6	0	163	70	45	44	13	8	5	61.5	1
EVANS, R.	NB	TCBA	.246	35	57	9	14	3	0	0	17	6	8	3	1	1	0	100.0	2
BUELOW, F.	NB	TCBA	.237	90	279	46	66	11	5	6	105	33	43	17	3	2	1	66.7	8
HUGHES, J.	NB	TCBA	.233	31	90	14	21	9	5	2	46	14	18	10	0	0	0	-	1
HALLMAN, B.	NB	TCBA	.211	42	90	9	19	5	1	0	26	10	10	7	3	2	1	66.7	1
Beeman, J.	NB	TCBA	.208	37	48	5	10	4	0	0	14	3	5	2	0	0	0	-	3
MILLER, B.	NB	TCBA	.194	19	31	2	6	0	0	0	6	4	3	0	0	0	0	-	1
THONEY, J.	NB	TCBA	.188	37	64	7	12	2	0	0	14	7	9	13	5	3	2	60.0	1
LEEVEER, S.	NB	TCBA	.163	31	98	10	16	4	0	0	20	6	13	4	5	3	2	60.0	1
YEAGER, G.	NB	TCBA	.154	100	298	26	46	4	1	0	52	34	34	28	2	0	2	.0	13
NEWTON, D.	NB	TCBA	.135	36	96	12	13	3	0	0	16	5	17	8	2	1	1	50.0	3
HUGHES, E.	NB	TCBA	.000	2	4	0	0	0	0	0	0	0	0	0	0	0	0	-	0
Newton Buccs			.275	1689	5338	780	1469	231	75	18	1904	708	586	412	310	217	93	70.0	83



WADDELL, R.
St. Louis "BROWNS" American B. B. League
By W. H. BOSTONER 1916 Sept. 27. 17-10119



MALLARDS

Mexicali Mallards Draft Picks



1-Patsy Dougherty

2-Pop Williams

3-Chappie McFarland

4-Charlie Shields

5-Warren McLaughlin

6-Jack Calhoun

7-Art Weaver

8-Mike Lynch





- 1-Chick Stahl, RF**
- 2-Jimmy Williams, 2B**
- 3-Patsy Dougherty, LF**
- 4-Duffy Cooley, CF**
- 5-Ossee Schreckengost C**
- 6-Charlie Irwin, 3B**
- 7-Charlie Dexter, 1B**
- 8-Monte Cross SS**
- 9-Noodles Hahn, P**

Starting Lineup Opening Day for the Mexicali Mallards

Starting Lineup Opening Day for the Mexicali Mallards

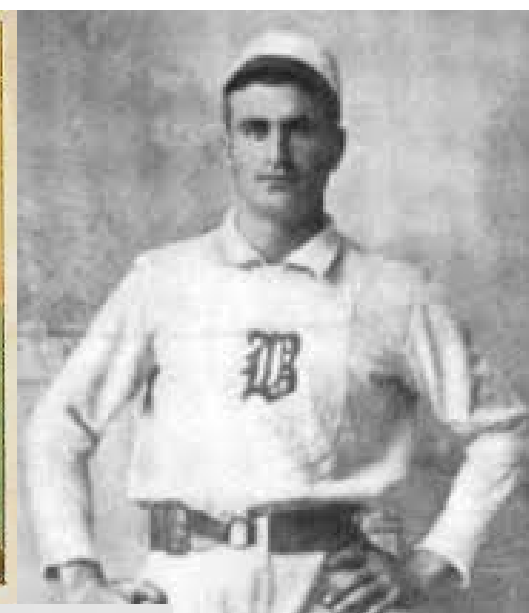


24 Players	Tm	Lg	AVG	G	AB	R	H	2B	3B	HR	TB	RBI	SO	BB	ASB	SB	CS	SBP	GDP
SCHRECKENGOST, O.	ME	TCBA	.387	110	395	55	153	22	2	4	191	69	22	11	7	5	2	71.4	5
BURKE, J.	ME	TCBA	.365	57	159	25	58	14	3	0	78	31	12	9	6	3	3	50.0	0
DOUGHERTY, P.	ME	TCBA	.341	124	475	96	162	13	6	0	187	45	45	51	25	10	15	40.0	7
MCFARLAND, C.	ME	TCBA	.333	14	9	1	3	0	0	0	3	0	1	0	0	0	0	-	1
STAHL, C.	ME	TCBA	.324	136	558	101	181	31	8	2	234	87	46	42	27	17	10	63.0	5
IRWIN, C.	ME	TCBA	.314	133	484	65	152	18	0	0	170	66	38	35	12	6	6	50.0	6
WILLIAMS, J.	ME	TCBA	.307	141	574	117	176	39	22	4	271	99	50	45	13	9	4	69.2	9
COOLEY, D.	ME	TCBA	.305	148	622	98	190	33	10	0	243	90	64	34	38	27	11	71.1	7
CHANCE, F.	ME	TCBA	.279	79	240	43	67	10	2	0	81	30	24	28	19	10	9	52.6	6
KITTRIDGE, M.	ME	TCBA	.268	82	254	22	68	8	1	3	87	36	31	15	3	2	1	66.7	11
WEAVER, A.	ME	TCBA	.267	9	15	1	4	1	0	0	5	1	2	0	0	0	0	-	1
DEXTER, C.	ME	TCBA	.263	104	346	38	91	8	0	1	102	39	48	42	23	14	9	60.9	10
SHIELDS, C.	ME	TCBA	.222	35	54	6	12	1	0	0	13	3	3	4	0	0	0	-	2
CROSS, M.	ME	TCBA	.195	154	564	49	110	25	1	5	152	80	80	37	8	4	4	50.0	14
HAHN, N.	ME	TCBA	.189	42	122	15	23	2	1	0	27	12	20	14	1	0	1	.0	4
Keefer, A.	ME	TCBA	.180	69	189	16	34	5	1	4	53	19	48	9	0	0	0	-	4
CALHOUN, J.	ME	TCBA	.175	27	57	9	10	5	2	0	19	3	7	8	0	0	0	-	0
REIDY, B.	ME	TCBA	.175	29	40	5	7	0	0	0	7	4	7	3	0	0	0	-	0
JACKSON, J.	ME	TCBA	.171	37	70	6	12	1	0	0	13	2	13	8	5	2	3	40.0	3
WILLIAMS, P.	ME	TCBA	.162	36	105	14	17	1	1	0	20	4	12	6	0	0	0	-	2
WINTER, G.	ME	TCBA	.155	26	71	4	11	1	0	0	12	8	12	4	0	0	0	-	4
FRASER, C.	ME	TCBA	.151	28	73	10	11	5	0	0	16	3	7	11	0	0	0	-	3
MCLAUGHLIN, W.	ME	TCBA	.125	15	8	2	1	1	0	0	2	0	1	0	0	0	0	-	0
LYNCH, M.	ME	TCBA	.000	22	16	1	0	0	0	0	0	1	2	2	0	0	0	-	0
Mexicali Mallards			.282	1657	5500	799	1553	244	60	23	1986	732	595	418	187	109	78	58.3	104

StatMaster
 Select Reports Multi Options Window Help

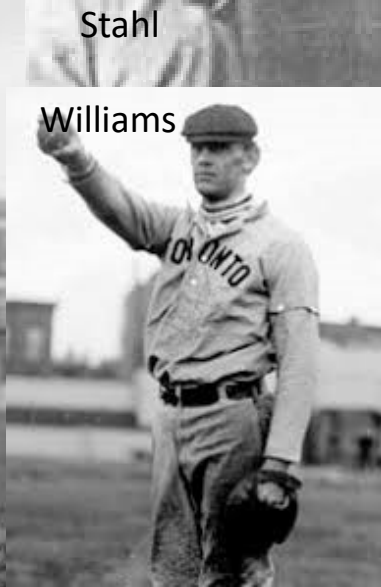
10 Pitchers	Tm	Lg	W	L	PCT	SV	ERA	G	GS	CG	SHO	QS	IP	H	R	ER	HR	SO	BB
HAHN, N.	ME	TCBA	24	13	.649	2	2.20	42	39	30	5	23	339.2	279	99	83	2	152	80
REIDY, B.	ME	TCBA	9	3	.750	5	2.31	29	11	8	1	6	128.2	129	45	33	0	37	20
WILLIAMS, P.	ME	TCBA	17	14	.548	1	3.14	36	35	22	5	17	281.1	264	134	98	2	123	88
WINTER, G.	ME	TCBA	15	8	.652	0	3.42	26	25	16	2	13	205.1	204	95	78	2	74	74
SHIELDS, C.	ME	TCBA	9	7	.563	2	5.18	35	14	9	0	3	158.0	218	114	91	10	51	37
FRASER, C.	ME	TCBA	10	16	.385	0	5.37	28	27	14	1	10	212.2	256	166	127	3	112	107
MCFARLAND, C.	ME	TCBA	2	2	.500	0	5.40	14	1	0	0	0	28.1	40	18	17	2	11	8
MCLAUGHLIN, W.	ME	TCBA	3	2	.600	2	6.03	15	2	2	0	1	31.1	37	23	21	0	19	22
JACKSON, J.	ME	TCBA	0	0	-	0	20.25	1	0	0	0	0	1.1	5	4	3	0	0	1
Keefer, A.	ME	TCBA	0	0	-	0	32.40	3	0	0	0	0	1.2	7	6	6	0	0	0
Mexicali Mallards			89	65	.578	12	3.61	229	154	101	14	73	1388.1	1439	704	557	21	579	437

10 Pitchers	Tm	Lg	SUP/9	R/9	ERA	BF/9	BR/9	H/9	BB/9	SO/9	HR/9	ERPT	OBA	BF	BR	IBB	HB	WP	BK
HAHN, N.	ME	TCBA	5.0	2.62	2.20	36.6	9.8	7.4	2.1	4.0	.05	54.2	.220	1383	368	1	10	2	0
REIDY, B.	ME	TCBA	3.8	3.15	2.31	37.5	11.0	9.0	1.3	2.6	.00	19.0	.261	536	157	2	10	0	0
WILLIAMS, P.	ME	TCBA	5.5	4.29	3.14	38.2	11.6	8.4	2.7	3.9	.06	15.6	.246	1195	362	3	13	7	0
WINTER, G.	ME	TCBA	4.9	4.16	3.42	39.1	12.1	8.9	3.0	3.2	.09	4.9	.259	891	277	6	5	2	0
SHIELDS, C.	ME	TCBA	3.5	6.49	5.18	41.7	15.2	12.4	2.1	2.9	.57	-27.2	.325	732	267	0	12	2	0
FRASER, C.	ME	TCBA	5.1	7.03	5.37	42.7	15.9	10.8	4.3	4.7	.13	-41.1	.300	1010	375	5	17	7	0
MCFARLAND, C.	ME	TCBA	.0	5.72	5.40	40.0	15.2	12.7	2.5	3.5	.64	-5.6	.339	126	48	0	0	0	0
MCLAUGHLIN, W.	ME	TCBA	2.3	6.61	6.03	43.4	16.9	10.6	6.3	5.5	.00	-8.3	.289	151	59	0	0	2	0
JACKSON, J.	ME	TCBA	.0	27.00	20.25	67.5	40.5	33.8	6.8	.0	.00	-2.5	.625	10	6	0	0	0	0
Keefer, A.	ME	TCBA	.0	32.40	32.40	70.2	43.2	37.8	.0	.0	.00	-5.3	.583	13	8	0	1	0	0
Mexicali Mallards			4.7	4.56	3.61	39.2	12.5	9.3	2.7	3.8	.14	3.8	.266	6047	1927	17	68	22	0



Hahn

Stahl





M U L E S

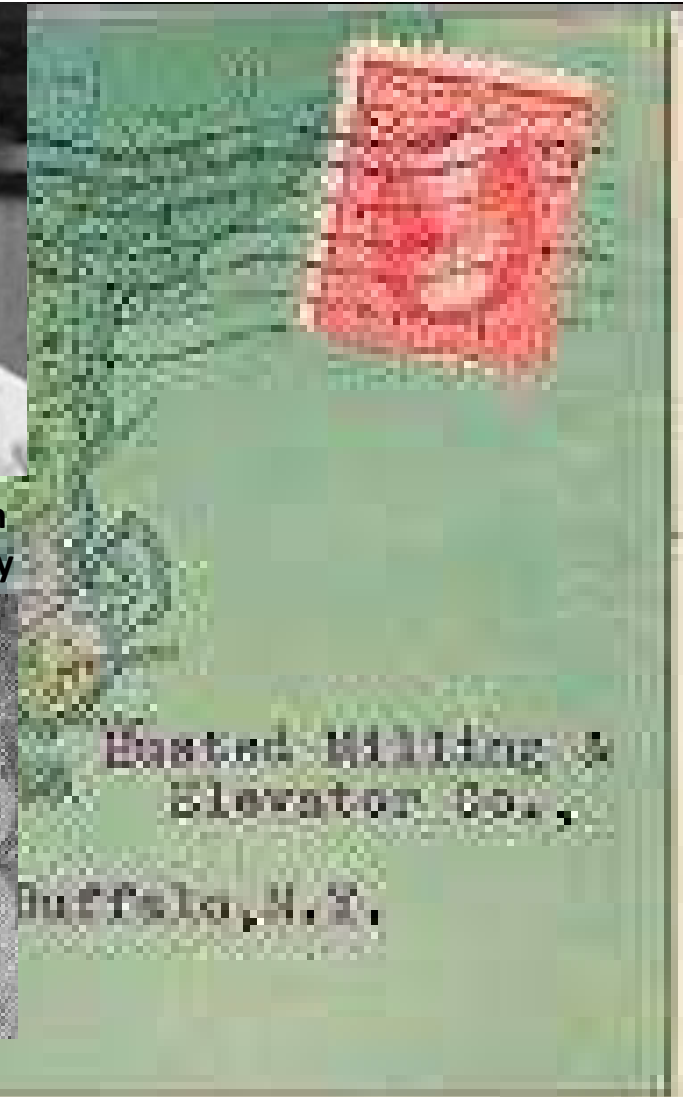


1-Andy Coakley
5-Joe Bean

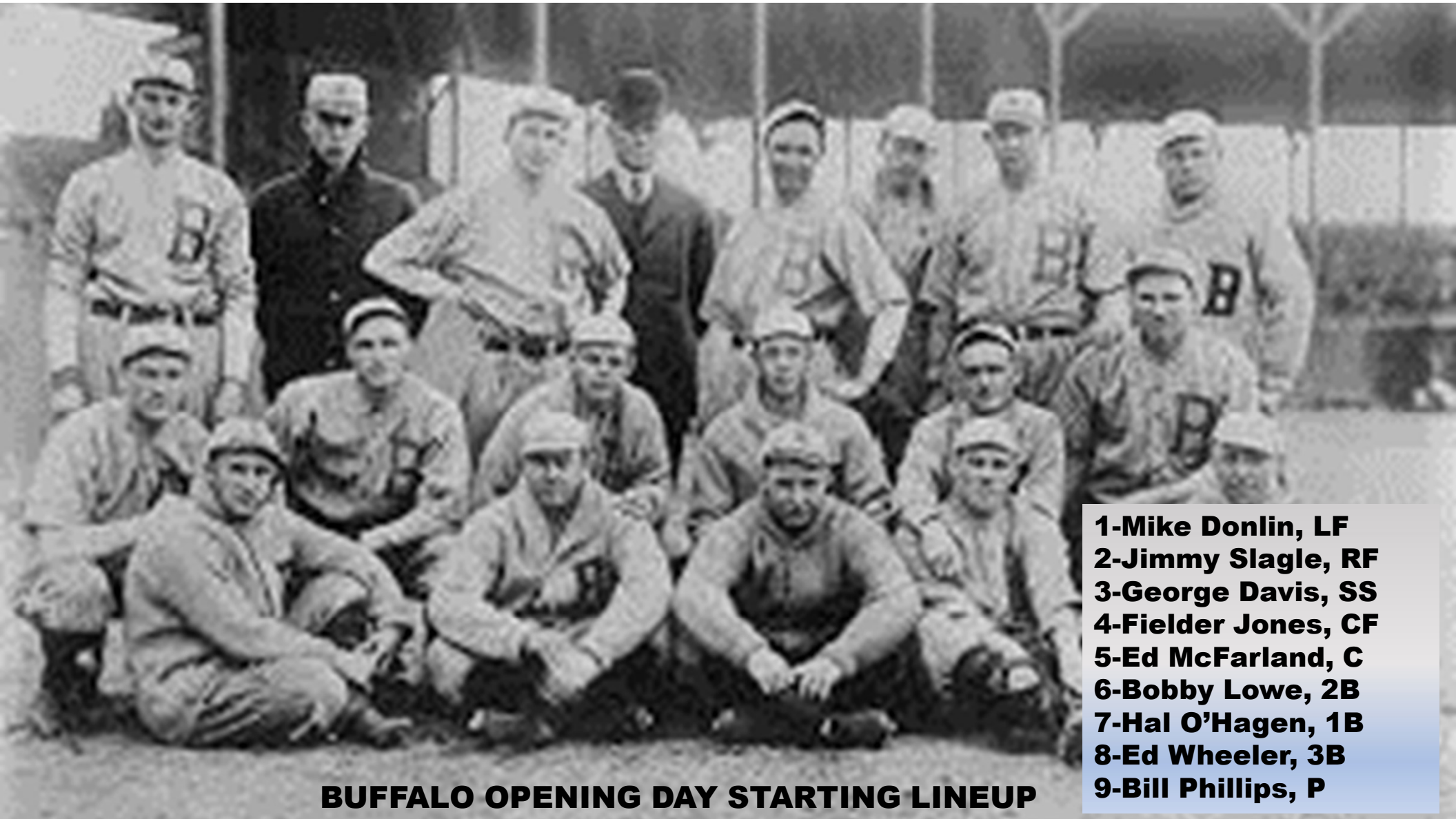
2-Charlie Smith
6-Bill Wolfe

3-Rube Vickers
7-Ed Wheeler

4-Hal O'Hagen
8-Arch McCarthy



Buffalo Mules Draft Picks



- 1-Mike Donlin, LF**
- 2-Jimmy Slagle, RF**
- 3-George Davis, SS**
- 4-Fielder Jones, CF**
- 5-Ed McFarland, C**
- 6-Bobby Lowe, 2B**
- 7-Hal O'Hagen, 1B**
- 8-Ed Wheeler, 3B**
- 9-Bill Phillips, P**

BUFFALO OPENING DAY STARTING LINEUP

BUFFALO OPENING DAY STARTING LINEUP



U-TCB903 - Buffalo Mules - Player Pitching

10 Pitchers	Tm	Lg	W	L	PCT	SV	ERA	G	GS	CG	SHO	QS	IP	H	R	ER	HR	SO	BB
DONLIN, M.	BU	TCBA	0	0		0	.00	1	0	0	0	0	1.0	0	0	0	0	0	0
PHILLIPPE, D.	BU	TCBA	17	15	.531	0	2.40	33	32	29	4	22	284.2	242	100	76	1	140	49
PHILLIPS, B.	BU	TCBA	16	16	.500	0	2.52	34	34	32	2	20	296.1	271	113	83	4	81	57
KITSON, F.	BU	TCBA	20	11	.645	1	2.86	32	31	30	5	15	280.0	243	117	89	4	128	53
PIATT, W.	BU	TCBA	10	16	.385	0	2.87	27	26	23	2	12	231.2	229	101	74	1	145	74
SMITH, C.	BU	TCBA	0	3	.000	0	4.18	3	3	2	0	1	28.0	30	20	13	0	6	11
COAKLEY, A.	BU	TCBA	1	3	.250	0	5.03	4	4	4	0	1	34.0	33	23	19	0	12	8
WOLFE, B.	BU	TCBA	3	12	.200	0	5.29	15	15	12	1	4	126.0	181	96	74	2	43	56
VICKERS, R.	BU	TCBA	0	6	.000	0	5.51	6	6	5	0	1	50.2	72	40	31	1	19	18
MCCARTHY, A.	BU	TCBA	0	5	.000	1	5.61	13	3	3	0	0	59.1	100	64	37	1	18	24
Buffalo Mules			67	87	.435	2	3.21	168	154	140	14	76	1391.2	1401	674	496	14	592	350

10 Pitchers	Tm	Lg	SUP/9	R/9	ERA	BF/9	BR/9	H/9	BB/9	SO/9	HR/9	ERPT	OBA	BF	BR	IBB	HB	WP	BK
DONLIN, M.	BU	TCBA	.0	.00	.00	27.0	.0	.0	.0	.00	.4	.000	.3	0	0	0	0	0	0
PHILLIPPE, D.	BU	TCBA	3.3	3.16	2.40	36.6	9.5	7.7	1.4	4.4	.03	39.0	.227	1158	301	5	15	4	0
PHILLIPS, B.	BU	TCBA	3.9	3.43	2.52	36.9	10.3	8.2	1.7	2.5	.12	36.7	.243	1214	339	2	13	7	0
KITSON, F.	BU	TCBA	4.0	3.76	2.86	37.1	9.7	7.8	1.6	4.1	.13	24.1	.228	1154	301	2	7	4	0
PIATT, W.	BU	TCBA	3.7	3.92	2.87	39.0	11.9	8.9	2.8	5.6	.04	19.6	.256	1003	307	3	7	4	0
SMITH, C.	BU	TCBA	2.6	6.43	4.18	39.9	12.5	9.6	2.9	1.9	.00	-1.7	.270	124	39	2	0	1	0
COAKLEY, A.	BU	TCBA	2.6	6.09	5.03	38.9	11.9	8.7	2.1	3.2	.00	-5.3	.258	147	45	0	4	1	0
WOLFE, B.	BU	TCBA	3.2	6.86	5.29	43.0	17.2	12.9	3.9	3.1	.14	-23.1	.343	602	241	2	6	0	0
VICKERS, R.	BU	TCBA	1.8	7.11	5.51	43.3	16.7	12.8	3.2	3.4	.18	-10.5	.338	244	94	0	4	0	0
MCCARTHY, A.	BU	TCBA	.9	9.71	5.61	47.5	19.1	15.2	3.6	2.7	.15	-13.0	.351	313	126	0	2	0	0
Buffalo Mules			3.5	4.36	3.21	38.6	11.6	9.1	2.2	3.8	.09	66.2	.259	5962	1793	16	58	21	0



21 Players	Tm	Lg	AVG	G	AB	R	H	2B	3B	HR	TB	RBI	SO	BB	ASB	SB	CS	SBP	GDP
DONAHUE, J.	BU	TCBA	.329	28	82	14	27	2	1	0	31	7	17	18	5	4	1	80.0	1
SLAGLE, J.	BU	TCBA	.317	129	479	77	152	13	2	0	169	66	59	74	60	40	20	66.7	10
JONES, F.	BU	TCBA	.314	152	576	84	181	13	4	0	202	55	61	70	63	45	18	71.4	8
DAVIS, G.	BU	TCBA	.307	138	535	77	164	33	8	2	219	49	45	69	60	38	22	63.3	12
PHILLIPS, B.	BU	TCBA	.297	35	111	18	33	2	2	0	39	12	15	11	0	0	0	-	0
DONLIN, M.	BU	TCBA	.260	48	169	13	44	11	3	0	61	17	12	6	13	10	3	76.9	1
PIATT, W.	BU	TCBA	.247	27	85	14	21	2	1	0	25	8	15	4	1	0	1	.0	1
LOWE, B.	BU	TCBA	.239	149	565	48	135	13	3	0	154	54	63	23	35	23	12	65.7	8
VICKERS, R.	BU	TCBA	.235	6	17	0	4	2	0	0	6	1	1	0	0	0	0	-	2
MCFARLAND, E.	BU	TCBA	.231	100	346	37	80	17	3	1	106	48	44	37	23	12	11	52.2	7
KITSON, F.	BU	TCBA	.226	49	124	17	28	7	5	0	45	12	16	3	0	0	0	-	1
JACKLITSCH, F.	BU	TCBA	.216	97	338	25	73	10	0	0	83	31	41	26	12	5	7	41.7	9
BEAN, J.	BU	TCBA	.204	82	245	23	50	1	2	0	55	16	35	7	25	15	10	60.0	3
Katon, N.	BU	TCBA	.203	114	409	30	83	13	3	2	108	43	87	28	0	0	0	-	15
PHILLIPPE, D.	BU	TCBA	.200	33	105	11	21	1	3	1	31	7	15	3	0	0	0	-	3
WOLFE, B.	BU	TCBA	.188	15	48	3	9	0	0	0	9	4	4	0	0	0	0	-	1
COAKLEY, A.	BU	TCBA	.182	4	11	1	2	0	0	0	2	0	3	1	0	0	0	-	0
O'HAGEN, H.	BU	TCBA	.160	146	537	34	86	12	5	0	108	36	83	31	53	42	11	79.2	11
MCCARTHY, A.	BU	TCBA	.158	13	19	0	3	0	0	0	3	4	2	0	0	0	0	-	1
WHEELER, E.	BU	TCBA	.122	116	393	21	48	0	0	0	48	16	47	17	3	1	2	33.3	8
SMITH, C.	BU	TCBA	.100	3	10	1	1	0	0	0	1	0	2	1	0	0	0	-	0
Buffalo Mules			.239	1484	5204	548	1245	152	45	6	1505	486	667	429	353	235	118	66.6	102



Welcome To
Bergen County

BARFLIES



Bergen Barflies Draft Picks

1-Carl Lundgren
5-Jesse Whiting

2-Rudy Hulswitt
6-Doc Adkins

3-Kitty Bransfield
7-George Hildebrand

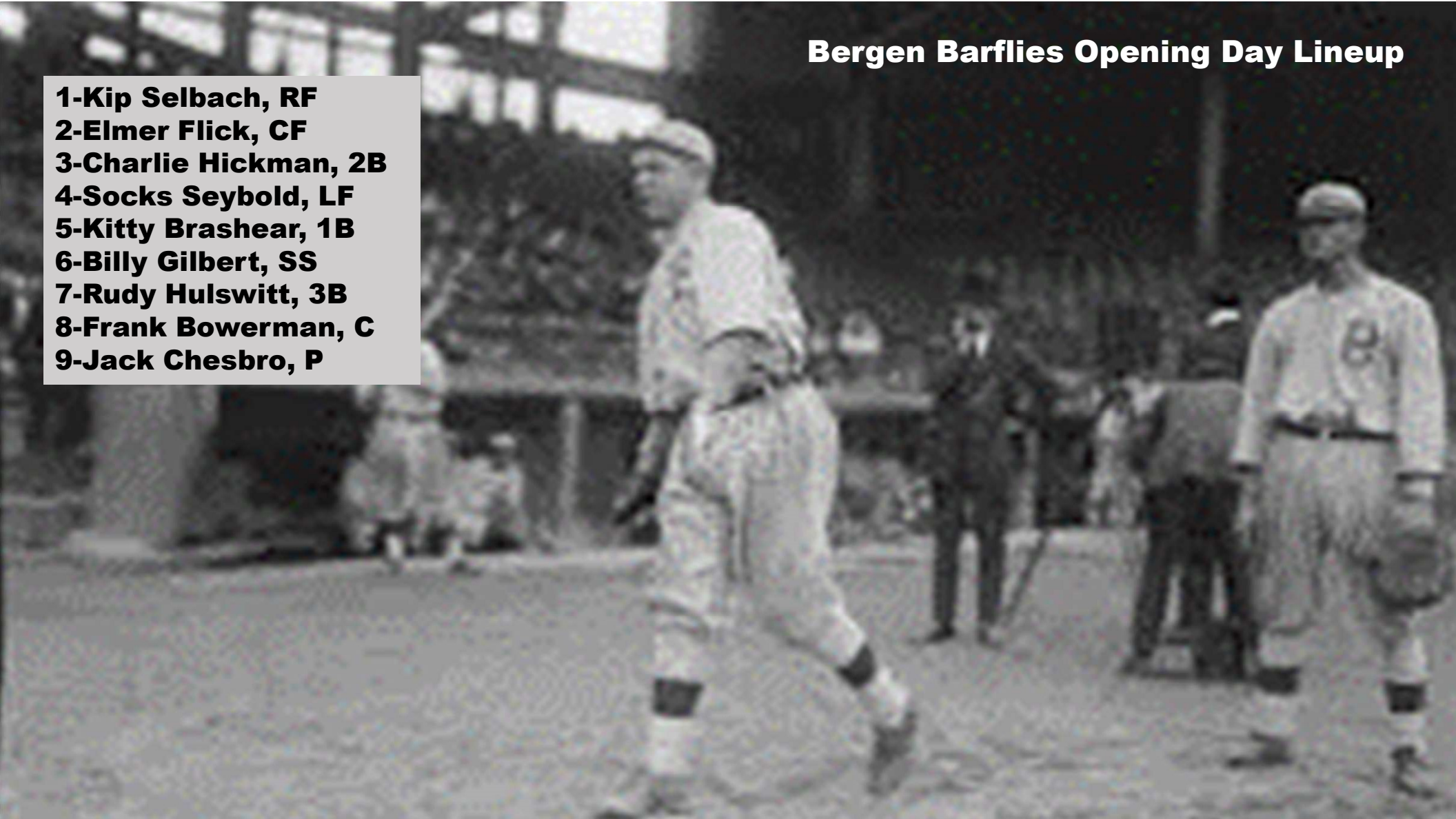
4-Frank Bonner
8-Jack Lundbom



Old maps of Bergen County, New Jersey

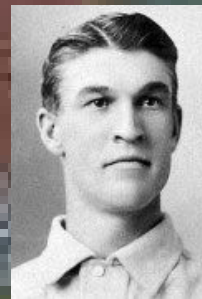
Bergen Barflies Opening Day Lineup

- 1-Kip Selbach, RF**
- 2-Elmer Flick, CF**
- 3-Charlie Hickman, 2B**
- 4-Socks Seybold, LF**
- 5-Kitty Brashear, 1B**
- 6-Billy Gilbert, SS**
- 7-Rudy Hulswitt, 3B**
- 8-Frank Bowerman, C**
- 9-Jack Chesbro, P**





Bergen Barflies Opening Day Lineup



25 Players	Tm	Lg	AVG	G	AB	R	H	2B	3B	HR	TB	RBI	SO	BB	ASB	SB	CS	SBP	GDP
HICKMAN, C.	BE	TCBA	.391	143	611	113	239	45	10	13	343	106	45	15	16	10	6	62.5	12
VASBINDER, M.	BE	TCBA	.375	17	8	2	3	0	0	0	3	0	2	0	0	0	0	-	0
FOREMAN, F.	BE	TCBA	.350	14	20	3	7	3	0	0	10	3	3	0	0	0	0	-	1
SUGDEN, J.	BE	TCBA	.316	64	209	25	66	8	1	0	76	25	16	16	2	1	1	50.0	3
SEYBOLD, S.	BE	TCBA	.313	148	581	89	182	28	12	20	294	138	43	46	10	6	4	60.0	19
FLICK, E.	BE	TCBA	.309	130	514	107	159	24	13	0	209	55	51	60	23	17	6	73.9	12
BRASHEAR, K.	BE	TCBA	.292	115	432	54	126	9	1	1	140	69	39	30	14	7	7	50.0	5
SELBACH, K.	BE	TCBA	.284	142	589	122	167	28	11	4	229	55	68	74	18	9	9	50.0	7
DUNHAM, W.	BE	TCBA	.273	18	22	2	6	1	0	0	7	4	6	0	0	0	0	-	0
Meade, L.	BE	TCBA	.249	117	429	49	107	17	1	5	141	65	92	20	2	0	2	.0	15
BONNER, F.	BE	TCBA	.248	53	125	8	31	3	0	0	34	19	13	4	0	0	0	-	0
HULSWITT, R.	BE	TCBA	.244	139	541	54	132	13	6	0	157	58	56	25	9	6	3	66.7	11
BOWERMAN, F.	BE	TCBA	.243	106	379	43	92	13	7	0	119	45	24	15	5	3	2	60.0	4
MITCHELL, F.	BE	TCBA	.236	30	72	9	17	6	3	0	29	5	10	1	3	0	3	.0	3
HUSTING, B.	BE	TCBA	.226	33	93	12	21	4	2	0	29	4	8	0	0	0	0	-	2
HILDEBRAND, G.	BE	TCBA	.221	41	95	7	21	3	0	0	24	7	9	6	0	0	0	-	6
CROLIUS, F.	BE	TCBA	.220	39	41	6	9	4	1	0	15	8	4	0	0	0	0	-	2
GILBERT, B.	BE	TCBA	.207	107	391	50	81	10	2	3	104	34	57	30	16	11	5	68.8	8
LUNDBOM, J.	BE	TCBA	.182	17	11	3	2	0	0	0	2	0	1	1	0	0	0	-	0
CHESBRO, J.	BE	TCBA	.167	44	120	8	20	0	1	0	22	4	21	4	0	0	0	-	0
LUNDGREN, C.	BE	TCBA	.167	24	72	11	12	2	0	0	14	3	10	4	2	1	1	50.0	1
ADKINS, D.	BE	TCBA	.161	29	31	5	5	0	0	0	5	3	3	0	0	0	0	-	2
CLARK, D.	BE	TCBA	.103	26	29	0	3	0	0	0	3	0	2	3	0	0	0	-	1
SALISBURY, S.	BE	TCBA	.000	17	7	0	0	0	0	0	0	0	1	0	0	0	0	-	0
WHITING, J.	BE	TCBA	.000	20	2	0	0	0	0	0	0	0	0	0	0	0	0	-	14
Bergen Barflies			.278	1633	5424	782	1508	221	71	46	2009	710	584	354	120	71	49	59.2	114

'Piano Legs'
Charles Hickman



RALPH O. SEYBOLD
R. F. ATHLETICS (A. L.)



AL. K. SELBACH
Professional
Base Ball Player.



FLICK, CLEVELAND

4:29 PM No Selections Made

13 Pitchers	Tm	Lg	W	L	PCT	SV	ERA	G	GS	CG	SHO	QS	IP	H	R	ER	HR	SO	BB
SUGDEN, J.	BE	TCBA	0	0	-	0	.00	1	0	0	0	0	1.0	0	0	0	0	0	0
HILDEBRAND, G.	BE	TCBA	0	0	-	0	2.45	1	0	0	0	0	3.2	4	1	1	1	2	2
CHESBRO, J.	BE	TCBA	24	15	.615	2	2.55	44	41	32	3	25	342.1	255	129	97	2	152	90
LUNDGREN, C.	BE	TCBA	12	10	.545	0	3.85	24	23	14	1	8	180.0	177	106	77	2	72	49
WHITING, J.	BE	TCBA	1	1	.500	1	4.26	20	2	0	0	0	38.0	42	25	18	0	15	16
MITCHELL, F.	BE	TCBA	9	16	.360	0	4.45	30	26	15	1	9	194.0	238	128	96	3	77	95
LUNDBOM, J.	BE	TCBA	1	1	.500	0	4.50	17	3	0	0	0	42.0	62	39	21	1	17	4
HUSTING, B.	BE	TCBA	10	18	.357	0	5.07	33	33	17	0	7	250.1	312	177	141	1	91	126
FOREMAN, F.	BE	TCBA	1	3	.250	0	5.25	14	5	3	0	1	58.1	81	48	34	0	30	35
ADKINS, D.	BE	TCBA	6	7	.462	3	5.67	29	8	4	1	4	100.0	151	79	63	7	38	43
VASBINDER, M.	BE	TCBA	1	1	.500	1	7.05	17	0	0	0	0	37.0	63	38	29	2	28	19
DUNHAM, W.	BE	TCBA	2	8	.200	0	8.64	18	8	1	0	1	66.2	117	75	64	9	39	33
SALISBURY, S.	BE	TCBA	0	6	.000	1	9.82	17	4	0	0	0	40.1	64	54	44	5	16	21
Bergen Barflies			67	86	.438	8	4.55	265	153	86	6	55	1353.2	1566	899	685	33	577	533



13 Pitchers	Tm	Lg	SUP/9	R/9	ERA	BF/9	BR/9	H/9	BB/9	SO/9	HR/9	ERPT	OBA	BF	BR	IBB	HB	WP	BK
SUGDEN, J.	BE	TCBA	.0	.00	.00	27.0	.0	.0	.0	.00	.4	.000	3	0	0	0	0	0	0
HILDEBRAND, G.	BE	TCBA	.0	2.45	2.45	44.2	17.2	9.8	4.9	4.9	2.45	.5	.267	18	7	0	1	0	0
CHESBRO, J.	BE	TCBA	4.2	3.39	2.55	36.8	9.4	6.7	2.3	4.0	.05	41.3	.203	1399	358	3	16	2	1
LUNDGREN, C.	BE	TCBA	5.8	5.30	3.85	39.0	11.7	8.8	2.5	3.6	.10	-4.3	.252	780	234	0	8	7	0
WHITING, J.	BE	TCBA	2.4	5.92	4.26	39.6	13.7	9.9	3.8	3.6	.00	-2.7	.294	167	58	0	0	0	0
MITCHELL, F.	BE	TCBA	5.0	5.94	4.45	42.8	16.0	11.0	4.4	3.6	.14	-17.6	.302	923	344	1	12	7	1
LUNDBOM, J.	BE	TCBA	3.2	8.36	4.50	41.8	14.4	13.3	.9	3.6	.21	-4.0	.333	195	67	0	1	4	0
HUSTING, B.	BE	TCBA	5.5	6.36	5.07	42.5	16.2	11.2	4.5	3.3	.04	-39.9	.308	1182	451	0	13	2	0
FOREMAN, F.	BE	TCBA	1.4	7.41	5.25	44.6	17.9	12.5	5.4	4.6	.00	-10.4	.327	289	116	0	0	0	0
ADKINS, D.	BE	TCBA	4.3	7.11	5.67	44.0	17.3	13.6	3.7	3.4	.63	-22.6	.347	489	192	2	0	0	0
VASBINDER, M.	BE	TCBA	.0	9.24	7.05	46.9	20.7	15.3	4.6	6.8	.49	-14.1	.377	193	85	0	3	1	0
DUNHAM, W.	BE	TCBA	4.0	10.13	8.64	46.6	20.4	15.8	4.5	5.3	1.22	-37.1	.385	345	151	0	1	3	0
SALISBURY, S.	BE	TCBA	1.3	12.05	9.82	47.1	19.6	14.3	4.7	3.6	1.12	-27.7	.346	211	88	0	3	0	0
Bergen Barflies			4.3	5.98	4.55	41.2	14.3	10.4	3.5	3.8	.22	-138.2	.288	6194	2151	6	58	26	2

4:30 PM U-TCB903 TCBA Origins 1902 MLB TCBA Origins 1902 MLB Stu McCorkindale Division Bergen Barflies



CHESBRO

WRETFORD

WRETFORD

WRETFORD



HIGHLANDERS



1-Bob Rhoads
5-Harry Kane

2-Ed Phelps
6-Sammy Curran

3-Harry Arndt
7-Dad Hale

4-John Terry
8-Ed Glynn



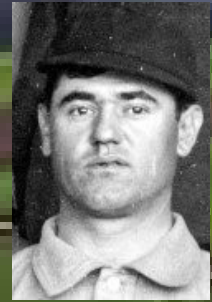
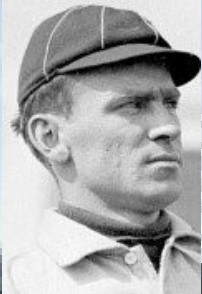
Hereford Highlanders Draft Picks



1-Harry Bay, CF 2-Sammy Strang, 3B 3-Jesse Burkett, RF
4-Harry Davis, 1B 5-Shad Barry, LF 6--Barry McCormick, SS
7-Harry Arndt, 2B 8-Pat Moran, C 9-Vic Willis, P

Starting Lineup Opening Day for Hereford Highlanders

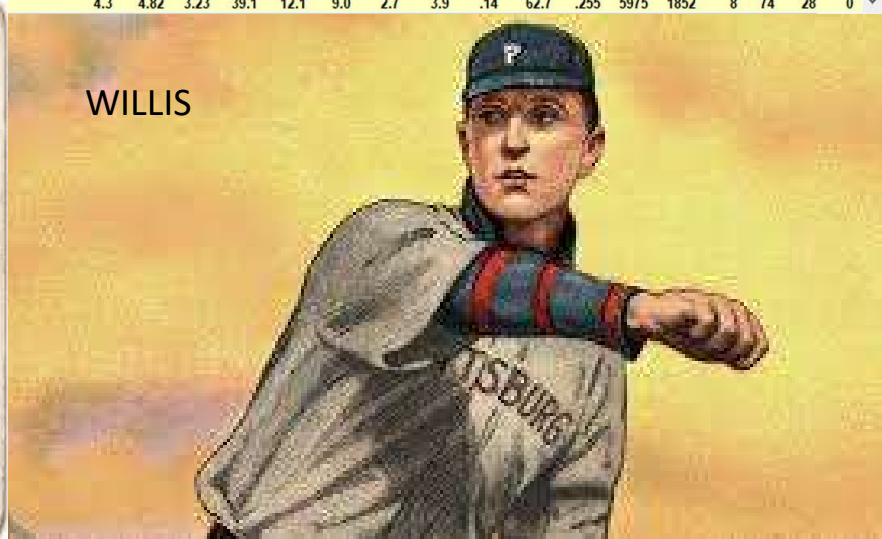
**Starting Lineup
Opening Day for
Hereford
Highlanders**



27 Players	Tm	Lg	AVG	G	AB	R	H	2B	3B	HR	TB	RBI	SO	BB	ASB	SB	CS	SBP	GDP
DAVIS, H.	HH	TCBA	.359	149	638	113	229	57	8	11	335	129	56	32	30	26	4	86.7	7
BURKETT, J.	HH	TCBA	.339	154	628	125	213	32	5	7	276	102	59	79	26	18	8	69.2	9
BAY, H.	HH	TCBA	.327	116	498	80	163	13	3	0	182	48	49	37	26	15	11	57.7	3
STRANG, S.	HH	TCBA	.302	154	665	120	201	24	6	1	240	56	62	53	47	36	11	76.6	16
BARRY, S.	HH	TCBA	.292	153	606	74	177	22	8	4	227	103	51	54	12	6	6	50.0	11
O'CONNOR, J.	HH	TCBA	.277	48	177	19	49	1	2	1	57	16	15	6	1	0	1	.0	4
PICKERING, O.	HH	TCBA	.274	61	124	23	34	4	0	3	47	16	13	5	1	1	0	100.0	1
JONES, J.	HH	TCBA	.248	46	105	9	26	3	1	0	31	13	20	6	2	1	1	50.0	2
Lyon, D.	HH	TCBA	.246	64	179	18	44	4	2	1	55	12	32	9	0	0	0	-	5
MORAN, P.	HH	TCBA	.244	64	221	27	54	4	1	2	66	23	16	14	2	1	1	50.0	5
MCCORMICK, B.	HH	TCBA	.241	150	555	54	134	17	8	4	179	84	92	47	7	2	5	28.6	12
GRIFFITH, C.	HH	TCBA	.227	33	75	11	17	0	0	0	17	10	10	9	0	0	0	-	1
ARNDT, H.	HH	TCBA	.214	91	308	44	66	9	5	2	91	28	52	57	7	5	2	71.4	1
DUNN, J.	HH	TCBA	.207	79	261	24	54	6	0	0	60	31	29	20	5	3	2	60.0	10
PHELPS, E.	HH	TCBA	.202	35	89	10	18	1	0	0	19	5	13	5	2	0	2	.0	3
KANE, H.	HH	TCBA	.200	8	5	1	1	0	0	0	1	0	0	0	0	0	0	-	0
WILSON, G.	HH	TCBA	.200	5	5	1	1	0	0	0	1	1	1	0	0	0	0	-	0
RHOADS, B.	HH	TCBA	.188	28	32	3	6	0	0	0	6	2	3	1	1	1	0	100.0	0
MOORE, E.	HH	TCBA	.164	39	122	10	20	1	0	0	21	7	16	2	0	0	0	-	5
EASON, M.	HH	TCBA	.162	35	99	7	16	0	0	0	16	7	15	3	0	0	0	-	3
HEISMANN, C.	HH	TCBA	.143	19	7	1	1	0	1	0	3	1	2	0	0	0	0	-	0
WILLIS, V.	HH	TCBA	.125	40	128	7	16	0	0	0	16	7	20	5	0	0	0	-	5
GLENN, E.	HH	TCBA	.000	28	6	1	0	0	0	0	0	1	0	2	0	0	0	-	1
HALE, D.	HH	TCBA	.000	7	1	0	0	0	0	0	0	0	0	0	0	0	0	-	0
CURRAN, S.	HH	TCBA	.000	7	1	0	0	0	0	0	0	0	1	0	0	0	0	-	0
LEITNER, D.	HH	TCBA	.000	11	0	1	0	0	0	0	0	0	0	1	0	0	0	-	0
TERRY, J.	HH	TCBA	.000	16	1	0	0	0	0	0	0	0	0	0	0	0	0	-	1
Hereford Highlanders			.278	1640	5536	783	1540	198	50	36	1946	702	627	447	169	115	54	68.0	105

13 Pitchers	Tm	Lg	W	L	PCT	SV	ERA	G	GS	CG	SHO	QS	IP	H	R	ER	HR	SO	BB
CURRAN, S.	HH	TCBA	2	1	.667	2	.00	7	0	0	0	0	9.0	7	2	0	0	5	2
HEISMANN, C.	HH	TCBA	3	0	1.000	0	2.08	19	1	1	0	1	30.1	24	10	7	0	23	17
Lyon, D.	HH	TCBA	1	0	1.000	0	2.61	3	1	0	0	0	10.1	10	9	3	0	3	2
MOORE, E.	HH	TCBA	16	14	.533	0	2.62	39	38	22	4	22	312.1	269	138	91	0	146	103
WILLIS, V.	HH	TCBA	21	17	.553	0	2.78	40	40	30	1	20	343.2	302	150	106	3	191	81
EASON, M.	HH	TCBA	12	19	.387	0	2.95	35	34	21	3	15	277.2	278	140	91	6	79	83
GRIFFITH, C.	HH	TCBA	8	18	.308	1	3.99	33	31	13	0	13	225.1	259	147	100	10	67	55
RHOADS, B.	HH	TCBA	10	4	.714	1	4.15	28	8	5	0	2	106.1	114	71	49	1	62	54
LEITNER, D.	HH	TCBA	2	1	.667	0	4.22	11	0	0	0	0	10.2	19	18	5	0	8	6
TERRY, J.	HH	TCBA	3	1	.750	0	5.56	16	0	0	0	0	22.2	36	19	14	0	5	3
PHELPS, E.	HH	TCBA	0	1	.000	1	6.00	2	0	0	0	0	3.0	6	2	2	0	1	0
HALE, D.	HH	TCBA	0	0	-	0	8.38	7	1	0	0	0	9.2	15	10	9	0	5	5
KANE, H.	HH	TCBA	0	0	-	1	9.82	8	0	0	0	0	14.2	30	21	16	1	8	6
Hereford Highlanders			78	76	.506	6	3.23	248	154	92	8	73	1375.2	1369	737	493	21	603	417

13 Pitchers	Tm	Lg	SUP/9	R/9	ERA	BF/9	BR/9	H/9	BB/9	SO/9	HR/9	ERPT	OBA	BF	BR	IBB	HB	WP	BK
CURRAN, S.	HH	TCBA	.0	2.00	.00	38.0	9.0	7.0	2.0	5.0	.00	3.6	.194	38	9	0	0	0	0
HEISMANN, C.	HH	TCBA	.9	2.97	2.08	39.5	13.1	7.1	5.0	6.8	.00	5.3	.220	133	44	0	3	1	0
Lyon, D.	HH	TCBA	5.2	7.84	2.61	38.3	11.3	8.7	1.7	2.6	.00	1.2	.256	44	13	0	1	0	0
MOORE, E.	HH	TCBA	5.2	3.98	2.62	38.2	11.3	7.8	2.9	4.2	.00	35.2	.231	1324	393	2	23	8	0
WILLIS, V.	HH	TCBA	4.5	3.93	2.78	37.6	10.4	7.9	2.1	5.0	.08	32.8	.230	1434	398	1	16	9	0
EASON, M.	HH	TCBA	3.8	4.54	2.95	38.5	12.0	9.0	2.6	2.6	.19	21.2	.260	1189	370	2	11	8	0
GRIFFITH, C.	HH	TCBA	5.0	5.87	3.99	40.3	12.9	10.3	2.1	2.7	.40	9.0	.279	1009	324	3	13	1	0
RHOADS, B.	HH	TCBA	4.7	6.01	4.15	41.8	14.6	9.6	4.6	5.2	.08	-6.0	.270	494	172	0	4	1	0
LEITNER, D.	HH	TCBA	.0	15.19	4.22	48.1	21.1	16.0	5.1	6.8	.00	-.7	.373	57	25	0	0	0	0
TERRY, J.	HH	TCBA	.0	7.54	5.56	40.9	15.9	14.3	1.2	2.0	.00	-4.8	.375	103	40	0	1	0	0
PHELPS, E.	HH	TCBA	.0	6.00	6.00	45.0	18.0	18.0	.0	3.0	.00	-.8	.545	15	6	0	0	0	0
HALE, D.	HH	TCBA	3.7	9.31	8.38	46.6	19.6	14.0	4.7	4.7	.00	-5.1	.341	50	21	0	1	0	0
KANE, H.	HH	TCBA	.0	12.89	9.82	52.2	22.7	18.4	3.7	4.9	.61	-10.1	.400	85	37	0	1	0	0
Hereford Highlanders			4.3	4.82	3.23	39.1	12.1	9.0	2.7	3.9	.14	62.7	.255	5975	1852	8	74	28	0







1-Harry Bemis
5-John Burke

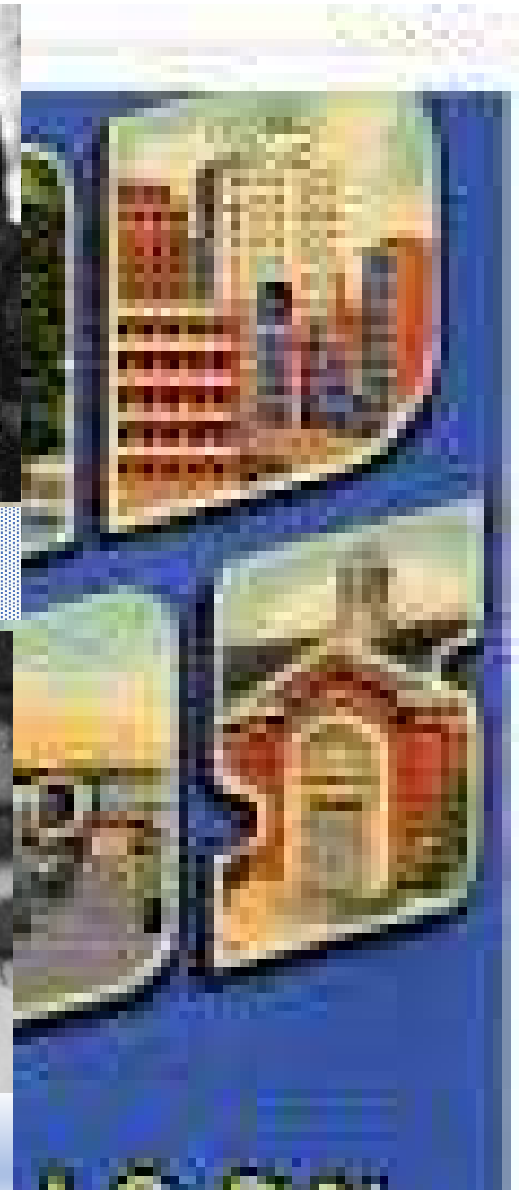
2-John Malarkey
6-Buck Hooker

3-Bob Dresser
7-Harvey Cushman

4-Henry Krug
8-Ed Kenna

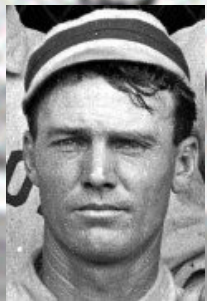


Grand Rapid Wolverines Draft Picks



Grand Rapids Opening Day Lineup

- 
- 1-Sam Crawford, RF**
 - 2-Jimmy Collins, 3B**
 - 3-Ed Delahanty, 1B**
 - 4-Buck Freeman, LF**
 - 6-Harry Bemis, C**
 - 6-Bill Dahlen, SS**
 - 7-Dick Padden, 2B**
 - 8-Ducky Holmes, CF**
 - 9-Ed Doheny, P**



**Grand Rapids Opening Day
Starting Lineup**



13 Pitchers	Tm	Lg	W	L	PCT	SV	ERA	G	GS	CG	SHO	QS	IP	H	R	ER	HR	SO	BB	
Sajdak, D.	GW	TCBA	0	0		0	.00	1	0	0	0	0	2.0	1	0	0	0	0	0	0
MALARKEY, J.	GW	TCBA	13	9	.591	1	3.06	31	23	19	2	11	211.2	189	103	72	3	74	99	
MURPHY, E.	GW	TCBA	11	9	.550	0	3.15	26	24	14	3	10	200.0	200	90	70	9	66	55	
DOHENY, E.	GW	TCBA	13	14	.481	1	3.28	31	26	19	0	11	225.0	223	116	82	2	113	59	
DRESSER, B.	GW	TCBA	12	12	.500	1	4.15	28	24	16	1	8	193.0	280	125	89	1	166	51	
KATOLL, J.	GW	TCBA	10	15	.400	0	6.03	29	24	13	1	5	188.0	258	154	126	5	79	63	
HOOKER, B.	GW	TCBA	1	1	.500	0	6.17	15	1	1	0	0	35.0	52	30	24	4	10	7	
KENNA, E.	GW	TCBA	4	11	.267	0	6.28	25	17	7	0	1	129.0	197	131	90	16	79	57	
YEAGER, J.	GW	TCBA	3	6	.333	1	6.86	21	6	4	0	1	78.2	131	74	60	2	36	21	
BURKE, J.	GW	TCBA	2	1	.667	0	6.95	18	3	1	0	0	44.0	80	39	34	0	19	9	
CUSHMAN, H.	GW	TCBA	1	2	.333	0	7.61	11	2	0	0	1	23.2	36	22	20	1	12	10	
MCFADDEN, B.	GW	TCBA	0	2	.000	0	7.85	7	2	0	0	0	18.1	26	18	16	0	6	12	
STREIT, O.	GW	TCBA	0	2	.000	0	9.71	12	2	1	0	0	29.2	59	48	32	1	15	20	
Grand Rapids Wolverines			70	84	.455	4	4.67	255	154	95	7	48	1378.0	1732	950	715	44	675	463	

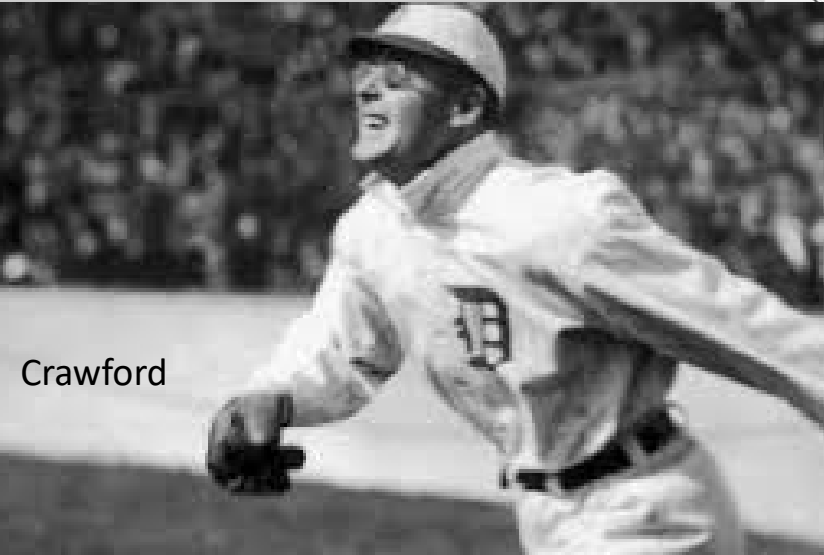
13 Pitchers	Tm	Lg	SUP/9	R/9	ERA	BF/9	BR/9	H/9	BB/9	SO/9	HR/9	ERPT	OBA	BF	BR	IBB	HB	WP	BK
Sajdak, D.	GW	TCBA	.0	.00	.00	31.5	4.5	4.5	.0	.0	.00	.8	.143	7	1	0	0	0	0
MALARKEY, J.	GW	TCBA	5.3	4.38	3.06	38.3	12.2	8.0	4.2	3.1	.13	13.5	.242	900	287	1	0	6	0
MURPHY, E.	GW	TCBA	4.4	4.05	3.15	37.8	11.7	9.0	2.5	3.0	.41	10.8	.261	840	260	0	5	1	0
DOHENY, E.	GW	TCBA	5.6	4.64	3.28	38.8	11.5	8.9	2.3	4.5	.08	8.9	.254	969	287	2	7	5	0
DRESSER, B.	GW	TCBA	6.9	5.83	4.15	42.2	15.4	13.1	2.4	7.7	.05	-11.0	.335	905	331	0	0	0	0
KATOLL, J.	GW	TCBA	6.8	7.37	6.03	42.9	16.0	12.4	2.9	3.8	.24	-50.1	.323	897	335	2	16	5	0
HOOKER, B.	GW	TCBA	1.0	7.71	6.17	42.2	15.2	13.4	1.8	2.6	1.03	-9.9	.351	164	59	0	0	0	0
KENNA, E.	GW	TCBA	5.9	9.14	6.28	45.1	18.2	13.7	4.0	5.5	1.12	-37.9	.344	646	261	0	7	0	0
YEAGER, J.	GW	TCBA	5.4	8.47	6.86	44.2	17.7	15.0	2.1	4.1	.23	-28.2	.371	386	155	3	6	0	0
BURKE, J.	GW	TCBA	3.1	7.98	6.95	45.4	18.2	16.4	1.8	3.9	.00	-16.2	.383	222	89	0	0	0	0
CUSHMAN, H.	GW	TCBA	.8	8.37	7.61	42.6	17.5	13.7	3.8	4.6	.38	-10.4	.364	112	46	0	0	0	0
MCFADDEN, B.	GW	TCBA	1.5	8.84	7.85	44.7	18.7	12.8	5.9	2.9	.00	-8.6	.347	91	38	0	0	0	0
STREIT, O.	GW	TCBA	.6	14.56	9.71	53.1	25.5	17.9	6.1	4.6	.30	-20.0	.396	175	84	0	5	2	0
Grand Rapids Wolverines			5.3	6.20	4.67	41.2	14.6	11.3	3.0	4.4	.29	-158.4	.305	6314	2233	8	46	19	0

25 Players	Tm	Lg	AVG	G	AB	R	H	2B	3B	HR	TB	RBI	SO	BB	ASB	SB	CS	SBP	GDP
DELAHANTY, E.	GW	TCBA	.416	136	550	141	229	50	11	6	319	107	46	79	12	10	2	83.3	5
CRAWFORD, S.	GW	TCBA	.337	154	701	151	236	35	14	2	305	68	76	62	28	20	8	71.4	5
FREEMAN, B.	GW	TCBA	.333	154	651	120	217	54	20	13	350	167	54	42	11	5	6	45.5	9
COLLINS, J.	GW	TCBA	.333	120	549	113	183	19	6	5	229	58	36	26	22	16	6	72.7	4
BEMIS, H.	GW	TCBA	.319	79	260	37	83	17	5	0	110	41	18	12	4	1	3	25.0	3
ROBINSON, W.	GW	TCBA	.313	91	332	41	104	17	3	0	127	64	27	13	7	4	3	57.1	3
YEAGER, J.	GW	TCBA	.286	23	42	9	12	2	2	1	21	5	5	0	0	0	0	-	1
PADDEN, D.	GW	TCBA	.267	115	453	57	121	21	6	0	154	53	48	32	12	8	4	66.7	8
DAHLEN, B.	GW	TCBA	.254	151	611	87	155	27	3	0	188	82	68	45	15	7	8	46.7	10
ZIMMER, C.	GW	TCBA	.247	32	77	13	19	0	2	0	23	13	6	12	0	0	0	-	3
KRUG, H.	GW	TCBA	.235	80	264	25	62	8	3	0	76	33	32	18	2	2	0	100.0	4
HOLMES, D.	GW	TCBA	.232	110	401	45	93	17	3	2	122	58	41	34	9	8	1	88.9	5
Sajdak, D.	GW	TCBA	.230	92	270	20	62	9	2	2	81	33	63	18	0	0	0	-	7
MURPHY, E.	GW	TCBA	.211	26	71	4	15	0	0	0	15	4	5	3	0	0	0	-	2
MALARKEY, J.	GW	TCBA	.210	31	81	8	17	7	0	1	27	14	16	3	1	1	0	100.0	1
DRESSER, B.	GW	TCBA	.205	28	83	11	17	4	0	0	21	9	21	0	0	0	0	-	1
KENNA, E.	GW	TCBA	.200	25	45	5	9	6	0	0	15	7	5	1	0	0	0	-	1
MURRAY, J.	GW	TCBA	.175	42	114	9	20	0	0	0	20	13	13	4	0	0	0	-	5
DOHENY, E.	GW	TCBA	.163	31	86	6	14	2	1	1	21	7	11	3	1	0	1	.0	2
KATOLL, J.	GW	TCBA	.154	29	65	9	10	0	0	0	10	5	7	12	0	0	0	-	3
HOOKER, B.	GW	TCBA	.143	15	7	0	1	0	0	0	1	0	2	0	0	0	0	-	0
BURKE, J.	GW	TCBA	.100	18	10	1	1	0	0	0	1	0	2	0	0	0	0	-	0
STREIT, O.	GW	TCBA	.000	12	6	0	0	0	0	0	0	0	3	0	0	0	0	-	0
MCFADDEN, B.	GW	TCBA	.000	7	5	0	0	0	0	0	0	0	0	0	0	0	0	-	0
CUSHMAN, H.	GW	TCBA	.000	11	4	0	0	0	0	0	0	0	1	0	0	0	0	-	0
Grand Rapids Wolverines			.293	1612	5738	912	1680	295	81	33	2236	841	606	419	124	82	42	66.1	82

DELAHANTY



FREEMAN, Fielder, Boston, A



Crawford





1-Jimmy Ryan
5-Jim Gardner



2-Highball Wilson
6-Jack Hendricks



3-Art Williams
7-John O'Connell




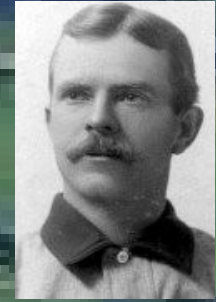
4-Alex Pearson
8-Nap Shea



Wilderness Wraiths Draft Picks

Wilderness Wraiths Opening Day Lineup

- 
- 1-Hugh Jennings, 1B**
 - 2-Gene DeMontreville, 2B**
 - 3-Willie Keeler, CF**
 - 4-Joe Kelley, LF**
 - 5-Jimmy Ryan, RF**
 - 6-Otto Krueger, SS**
 - 7-Sibbi Sisti, 3B**
 - 8-Farmer Steelman, C**
 - 9-Joe McGinnity, P**



**Wilderness Wraiths
Opening Day Lineup**

23 Players	Tm	Lg	AVG	G	AB	R	H	2B	3B	HR	TB	RBI	SO	BB	ASB	SB	CS	SBP	GDP
DEININGER, P.	WW	TCBA	.400	20	10	1	4	3	0	0	7	2	0	0	0	0	0	-	0
KEELER, W.	WW	TCBA	.348	147	630	102	219	25	6	0	256	83	56	20	21	13	8	61.9	10
KELLEY, J.	WW	TCBA	.346	121	402	65	139	27	9	0	184	78	30	52	14	7	7	50.0	2
HENDRICKS, J.	WW	TCBA	.341	32	41	12	14	0	3	0	20	4	3	3	4	1	3	25.0	0
RYAN, J.	WW	TCBA	.331	136	511	99	169	37	7	9	247	99	41	37	9	6	3	66.7	7
WICKER, B.	WW	TCBA	.293	25	41	3	12	3	0	0	15	8	3	0	2	2	0	100.0	1
GARDNER, J.	WW	TCBA	.286	8	7	0	2	0	0	0	2	2	2	0	0	0	0	-	0
MENELEE, J.	WW	TCBA	.282	82	202	25	57	6	0	0	63	30	27	9	4	1	3	25.0	3
BRESNAHAN, R.	WW	TCBA	.279	116	402	46	112	21	11	4	167	83	37	24	14	11	3	78.6	6
PEARSON, A.	WW	TCBA	.273	15	11	0	3	0	0	0	3	2	1	0	0	0	0	-	0
KRUEGER, O.	WW	TCBA	.270	134	514	81	139	5	11	0	166	56	51	35	13	9	4	69.2	6
JENNINGS, H.	WW	TCBA	.262	89	325	57	85	12	1	0	99	27	29	16	5	1	4	20.0	4
DEMONTREVILLE, G.	WW	TCBA	.259	143	607	85	157	16	7	0	187	50	58	14	17	13	4	76.5	3
Sibley, S.	WW	TCBA	.253	133	451	36	114	26	3	2	152	52	69	38	0	0	0	-	6
WILLIAMS, A.	WW	TCBA	.213	121	366	50	78	5	0	0	83	34	59	27	21	13	8	61.9	7
WILSON, H.	WW	TCBA	.195	21	41	3	8	0	0	0	8	3	8	1	0	0	0	-	1
MCGINNITY, J.	WW	TCBA	.193	39	114	9	22	3	3	0	31	9	19	4	2	2	0	100.0	1
STEELMAN, F.	WW	TCBA	.182	129	422	29	77	8	0	0	85	37	66	33	11	9	2	81.8	9
O'CONNELL, J.	WW	TCBA	.159	41	88	3	14	0	0	0	14	2	14	17	0	0	0	-	1
GARVIN, N.	WW	TCBA	.130	33	77	7	10	0	0	0	10	3	12	0	0	0	0	-	0
SHEA, N.	WW	TCBA	.106	45	85	7	9	0	0	0	9	2	6	0	0	0	0	-	1
DONAHUE, R.	WW	TCBA	.060	36	100	8	6	0	1	0	8	2	15	6	0	0	0	-	2
FOX, H.	WW	TCBA	.000	25	7	0	0	0	0	0	0	0	3	0	0	0	0	-	0
Wilderness Wraiths			.266	1691	5454	728	1450	197	62	15	1816	668	609	336	137	88	49	64.2	70

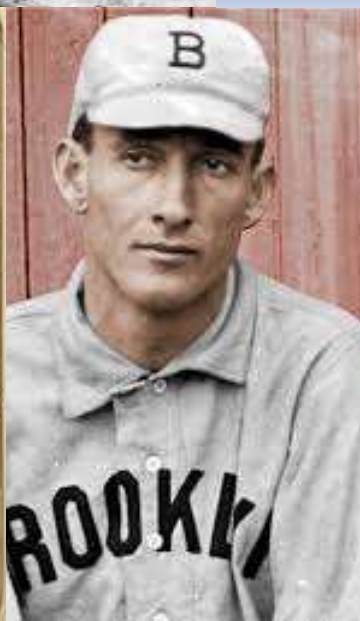


Wee
Willie
Keeler
"Hit'em
Where
They
Ain't"

WILDERNESS
WRAITHS

12 Pitchers	Tm	Lg	W	L	PCT	SV	ERA	G	GS	CG	SHO	QS	IP	H	R	ER	HR	SO	BB
WILLIAMS, A.	WW	TCBA	1	0	1.000	0	.00	1	0	0	0	0	.1	0	0	0	0	0	0
GARDNER, J.	WW	TCBA	1	1	.500	1	2.84	8	2	2	0	2	31.2	24	13	10	1	10	11
GARVIN, N.	WW	TCBA	15	10	.600	1	2.88	33	31	11	2	16	228.1	213	109	73	1	72	77
MENELEE, J.	WW	TCBA	13	7	.650	2	2.91	26	21	15	2	9	182.1	170	77	59	3	52	34
WILSON, H.	WW	TCBA	6	11	.353	0	2.97	21	13	7	2	6	118.1	109	62	39	0	32	34
O'CONNELL, J.	WW	TCBA	0	0	-	0	3.00	2	0	0	0	0	3.0	5	1	1	0	0	2
DEININGER, P.	WW	TCBA	1	2	.333	1	3.25	20	0	0	0	0	44.1	49	18	16	3	16	15
DONAHUE, R.	WW	TCBA	15	19	.441	0	3.62	36	36	21	1	14	290.2	298	156	117	5	80	75
MCGINNITY, J.	WW	TCBA	15	20	.429	0	3.62	38	37	23	1	12	308.0	312	176	124	7	101	77
WICKER, B.	WW	TCBA	7	4	.636	0	4.36	21	10	5	1	4	97.0	115	58	47	1	66	35
FOX, H.	WW	TCBA	0	2	.000	0	5.19	25	0	0	0	0	34.2	48	27	20	0	28	21
PEARSON, A.	WW	TCBA	1	3	.250	0	5.80	15	4	2	0	1	40.1	62	33	26	0	11	12
Wilderness Wraiths			75	79	.487	5	3.47	246	154	86	9	64	1379.0	1405	730	532	21	468	393

12 Pitchers	Tm	Lg	SUP/9	R/9	ERA	BF/9	BR/9	H/9	BB/9	SO/9	HR/9	ERPT	OBA	BF	BR	IBB	HB	WP	
WILLIAMS, A.	WW	TCBA	.0	.00	.00	27.0	.0	.0	.0	.0	.00	.1	.000	1	0	0	0	0	
GARDNER, J.	WW	TCBA	1.4	3.69	2.84	37.2	9.7	6.8	2.8	2.8	2.8	.28	2.8	.207	131	34	1	0	0
GARVIN, N.	WW	TCBA	4.4	4.30	2.88	39.2	11.7	8.4	2.8	2.8	.04	19.2	.241	994	298	5	13	8	
MENELEE, J.	WW	TCBA	5.6	3.80	2.91	36.9	10.2	8.4	1.5	2.6	.15	14.7	.245	747	206	3	5	5	
WILSON, H.	WW	TCBA	3.9	4.72	2.97	39.5	11.0	8.3	1.9	2.4	.00	8.8	.236	520	144	9	10	0	
O'CONNELL, J.	WW	TCBA	.0	3.00	3.00	48.0	21.0	15.0	6.0	.0	.00	.2	.357	16	7	0	0	0	
DEININGER, P.	WW	TCBA	.0	3.65	3.25	39.6	13.2	9.9	2.8	3.2	.61	1.9	.277	195	65	1	2	2	
DONAHUE, R.	WW	TCBA	4.1	4.83	3.62	38.6	11.8	9.2	2.2	2.5	.15	.4	.263	1248	382	3	12	3	
MCGINNITY, J.	WW	TCBA	4.6	5.14	3.62	38.9	11.5	9.1	2.1	3.0	.20	.4	.257	1330	394	5	10	1	
WICKER, B.	WW	TCBA	4.8	5.38	4.36	41.5	13.9	10.7	3.0	6.1	.09	-.78	.290	447	150	3	3	3	
FOX, H.	WW	TCBA	.0	7.01	5.19	44.4	16.9	12.5	4.2	7.3	.00	-.60	.327	171	65	5	1	0	
PEARSON, A.	WW	TCBA	1.6	7.36	5.80	42.8	16.7	13.8	2.7	2.5	.00	-.97	.352	192	75	0	1	0	
Wilderness Wraiths			4.1	4.76	3.47	39.1	11.9	9.2	2.3	3.1	.14	25.0	.259	5992	1820	35	57	22	



MIMOSA





**1-Nick Altrock
5-Jack Morrissey**

**2-Clarence Currie
6-Dave Williams**

**3-Lew Ritter
7-Mike Jacobs**

**4-Dusty Miller
8-Bill Popp**



Mimosa Mirthmakers Draft Picks



1-Fred Clarke, CF
2-Claude Ritchey, 2B
3-Patsy Donovan, RF
4-Billy Coughlin, 3B
5-John Anderson, 1B
6-Cozy Dolan, LF
7-Boileryard Clarke, C
8-Tex Smith, SS
9-Jack Powell, P

Mimosa Mirthmaker Lineup for Opening Day

Mimosa Mirthmaker Starting Lineup for Opening Day



26 Players	Tm	Lg	AVG	G	AB	R	H	2B	3B	HR	TB	RBI	SO	BB	ASB	SB	CS	SBP	GDP
CLARKE, F.	MI	TCBA	.363	129	493	103	179	38	11	0	239	55	54	76	37	29	8	78.4	3
DONOVAN, P.	MI	TCBA	.324	143	571	102	185	22	6	0	219	65	57	41	51	38	13	74.5	8
COUGHLIN, B.	MI	TCBA	.311	134	531	84	165	33	3	6	222	97	53	30	36	26	10	72.2	6
RITTER, L.	MI	TCBA	.308	20	52	5	16	1	0	0	17	2	8	2	2	0	100.0	0	
MILLER, D.	MI	TCBA	.285	41	137	19	39	8	1	0	49	9	15	6	6	5	1	83.3	2
DOLAN, C.	MI	TCBA	.283	154	636	86	180	23	8	0	219	94	57	34	37	26	11	70.3	9
ANDERSON, J.	MI	TCBA	.282	144	586	87	165	34	9	6	235	100	53	39	24	13	11	54.2	6
ELY, B.	MI	TCBA	.276	100	369	27	102	15	3	0	123	42	30	17	4	0	4	.0	9
DOUGLASS, K.	MI	TCBA	.274	84	285	34	78	8	1	0	88	28	41	19	11	6	5	54.5	5
CLARKE, B.	MI	TCBA	.269	87	316	28	85	17	0	2	108	50	31	32	1	0	1	.0	9
BURNS, C.	MI	TCBA	.267	6	15	0	4	0	0	0	4	2	3	0	0	0	0	.0	0
MORRISSEY, J.	MI	TCBA	.238	23	42	7	10	4	0	0	14	8	2	5	0	0	0	.0	3
POWELL, J.	MI	TCBA	.211	39	123	11	26	13	0	0	39	8	15	11	0	0	0	.0	1
TOWNSEND, J.	MI	TCBA	.208	19	48	7	10	3	2	0	17	1	8	0	0	0	0	.0	0
RITCHEY, C.	MI	TCBA	.204	115	436	62	89	15	0	1	107	40	42	58	16	7	9	43.8	7
SUDHOFF, W.	MI	TCBA	.198	34	101	15	20	2	1	0	24	5	14	12	6	5	1	83.3	1
KENNEDY, B.	MI	TCBA	.190	15	21	2	4	3	0	0	7	1	4	4	0	0	0	.0	0
JACOBS, M.	MI	TCBA	.182	7	11	0	2	0	0	0	2	1	1	0	0	0	0	.0	1
Smith, L.	MI	TCBA	.171	123	420	35	72	9	2	3	94	32	88	37	0	0	0	.0	17
POPP, B.	MI	TCBA	.143	9	14	1	2	0	0	0	2	2	1	0	0	0	0	.0	1
PATTEN, C.	MI	TCBA	.120	38	108	7	13	0	0	0	13	4	19	6	0	0	0	.0	0
CURRIE, C.	MI	TCBA	.101	31	79	3	8	1	0	0	9	5	13	6	2	1	1	50.0	1
ATZ, J.	MI	TCBA	.056	13	18	3	1	0	0	0	1	1	1	0	0	0	0	.0	0
LATIMER, T.	MI	TCBA	.000	6	11	0	0	0	0	0	0	0	2	0	0	0	0	.0	1
ALTROCK, N.	MI	TCBA	.000	9	7	0	0	0	0	0	0	0	1	0	0	0	0	.0	0
WILLIAMS, D.	MI	TCBA	.000	12	4	0	0	0	0	0	0	0	1	0	0	0	0	.0	0
Mimosa Mirthmakers			.268	1535	5434	728	1455	249	47	18	1852	652	614	435	233	158	75	67.8	90



F. CLARKE, PITTSBURGH



Ball.

DETROIT.



ANDERSON, PROVIDENCE

3:32 PM U-TCB903 TCBA Origins 1902 MLB TCBA Origins 1902 MLB Bill Kirwin Division Mimosa Mirthmakers

10 Pitchers	Tm	Lg	W	L	PCT	SV	ERA	G	GS	CG	SHO	QS	IP	H	R	ER	HR	SO	BB
Smith, L.	MI	TCBA	1	0	1.000	0	.00	3	0	0	0	0	7.0	4	1	0	0	1	1
CURRIE, C.	MI	TCBA	13	15	.464	1	3.21	31	26	23	4	13	230.0	228	103	82	2	77	68
SUDHOFF, W.	MI	TCBA	19	12	.613	1	3.44	33	29	27	3	14	269.1	255	137	103	5	81	84
POWELL, J.	MI	TCBA	20	18	.526	0	3.98	39	38	30	2	13	328.0	324	182	145	3	209	95
POPP, B.	MI	TCBA	2	0	1.000	0	4.55	9	2	1	0	0	31.2	40	22	16	3	8	14
PATTEN, C.	MI	TCBA	11	17	.393	1	4.55	37	33	23	2	8	278.2	351	190	141	4	141	81
ALTROCK, N.	MI	TCBA	2	2	.500	1	4.94	9	2	1	0	1	27.1	28	18	15	0	18	15
WILLIAMS, D.	MI	TCBA	0	2	.000	3	5.51	12	0	0	0	0	16.1	22	13	10	0	10	13
KENNEDY, B.	MI	TCBA	0	8	.000	0	6.72	15	8	3	0	0	73.2	114	65	55	0	30	39
TOWNSEND, J.	MI	TCBA	2	10	.167	1	7.36	19	16	7	1	1	117.1	185	126	96	13	65	58
Mimosa Mirthmakers			70	84	.455	8	4.33	207	154	115	12	50	1379.1	1551	857	663	30	640	468

10 Pitchers	Tm	Lg	SUP/9	R/9	ERA	BF/9	BR/9	H/9	BB/9	SO/9	HR/9	ERPT	OBA	BF	BR	IBB	HB	WP	BK
Smith, L.	MI	TCBA	.0	1.29	.00	32.1	6.4	5.1	1.3	1.3	.00	2.8	.167	25	5	0	0	0	0
CURRIE, C.	MI	TCBA	4.0	4.03	3.21	38.2	11.7	8.9	2.5	3.0	.08	10.9	.262	976	298	5	7	4	0
SUDHOFF, W.	MI	TCBA	4.6	4.58	3.44	38.4	11.5	8.5	2.7	2.7	.17	5.8	.247	1150	344	4	9	3	0
POWELL, J.	MI	TCBA	4.8	4.99	3.98	38.9	11.7	8.9	2.5	5.7	.08	-12.5	.252	1417	427	3	11	9	0
POPP, B.	MI	TCBA	6.3	6.25	4.55	41.2	15.6	11.4	4.0	2.3	.85	-3.2	.308	145	55	0	1	0	0
PATTEN, C.	MI	TCBA	5.0	6.14	4.55	41.3	14.5	11.3	2.5	4.6	.13	-28.4	.306	1278	448	3	19	2	3
ALTROCK, N.	MI	TCBA	.3	5.93	4.94	40.5	14.2	9.2	4.9	5.9	.00	-4.0	.264	123	43	0	0	0	0
WILLIAMS, D.	MI	TCBA	.0	7.16	5.51	46.8	19.8	12.1	7.2	5.5	.00	-3.4	.324	85	36	0	1	1	0
KENNEDY, B.	MI	TCBA	2.2	7.94	6.72	45.0	18.8	13.9	4.8	3.7	.00	-25.2	.358	368	154	0	1	3	0
TOWNSEND, J.	MI	TCBA	4.4	9.66	7.36	45.5	18.9	14.2	4.4	5.0	1.00	-48.6	.356	593	246	0	3	3	0
Mimosa Mirthmakers			4.4	5.59	4.33	40.2	13.4	10.1	3.0	4.2	.20	-105.8	.282	6160	2056	15	52	25	3



POWELL, ST. LOUIS, A.M.C.H.

MOUNTAINEERS



TURIN





1-Heinie Wagner
5-traded to LI



2-Scoops Carey
6-Libe Washburn



3-Rube Kisinger
7-Lee Fohl



4-Jimmy Mathison
8-Rudy Kling

traded^{ny}



Turin Mountaineers Draft Picks



TURIN MOUNTAINEER OPENING DAY LINEUP

- 1-Danny Green, CF**
- 2-Bill Bradley, 3B**
- 3-Scoops Carey, 1B**
- 4-Mike O'Neill, LF**
- 5-Watty Lee, RF**
- 6-Deacon McGuire, C**
- 7-Jesse Tannehill, P**
- 8-Wid Conroy, SS**
- 9-John Farrell, 2B**

TURIN MOUNTAINEERS OPENING DAY STARTING LINEUP



9 Pitchers	Tm	Lg	W	L	PCT	SV	ERA	G	GS	CG	SHO	QS	IP	H	R	ER	HR	SO	BB
HEIDRICK, E.	TU	TCBA	0	0	-	0	.00	1	0	0	0	0	1.0	0	0	0	0	0	1
TANNEHILL, J.	TU	TCBA	24	10	.706	4	1.91	43	29	20	4	22	269.0	198	73	57	2	135	45
KISINGER, R.	TU	TCBA	3	2	.600	2	2.38	22	3	2	1	2	56.2	45	26	15	0	24	16
PLANK, E.	TU	TCBA	26	15	.634	0	2.38	45	45	31	6	31	358.2	303	130	95	3	217	79
O'NEILL, M.	TU	TCBA	23	16	.590	0	3.33	42	41	25	1	19	337.1	342	170	125	5	160	113
CRONIN, J.	TU	TCBA	13	15	.464	2	3.71	38	31	18	1	14	247.2	245	137	102	12	116	78
FELIX, H.	TU	TCBA	0	0	-	0	4.61	11	0	0	0	0	27.1	44	18	14	1	11	8
LEE, W.	TU	TCBA	1	4	.200	2	6.47	21	4	3	0	1	55.2	103	51	40	3	18	12
Pio, P.	TU	TCBA	1	1	.500	0	10.05	6	1	0	0	0	14.1	28	16	16	0	3	6
Turin Mountaineers			91	63	.591	10	3.05	229	154	99	13	89	1367.2	1308	621	464	26	684	358

9 Pitchers	Tm	Lg	SUP/9	R/9	ERA	BF/9	BR/9	H/9	BB/9	SO/9	HR/9	ERPT	OBA	BF	BR	IBB	HB	WP	BK
HEIDRICK, E.	TU	TCBA	.0	.00	.00	36.0	9.0	.0	9.0	.0	.00	.4	.000	4	1	0	0	0	0
TANNEHILL, J.	TU	TCBA	5.4	2.44	1.91	35.8	8.5	6.6	1.4	4.5	.07	51.7	.200	1071	253	4	14	0	0
KISINGER, R.	TU	TCBA	2.1	4.13	2.38	37.3	9.7	7.1	2.2	3.8	.00	7.9	.210	235	61	2	2	0	0
PLANK, E.	TU	TCBA	5.2	3.26	2.38	36.9	9.8	7.6	1.9	5.4	.08	49.9	.224	1469	392	4	14	3	0
O'NEILL, M.	TU	TCBA	5.9	4.54	3.33	38.7	12.4	9.1	2.9	4.3	.13	11.3	.266	1452	463	3	11	0	0
CRONIN, J.	TU	TCBA	5.6	4.98	3.71	38.9	11.7	8.9	2.7	4.2	.44	-2.0	.252	1071	322	5	4	4	0
FELIX, H.	TU	TCBA	.0	5.93	4.61	43.1	17.1	14.5	2.6	3.6	.33	-3.0	.367	131	52	0	0	0	0
LEE, W.	TU	TCBA	1.5	8.25	6.47	45.8	18.8	16.7	1.8	2.9	.49	-17.5	.390	283	116	1	2	0	0
Pio, P.	TU	TCBA	.0	10.05	10.05	47.1	22.0	17.6	3.8	1.9	.00	-10.2	.418	75	35	0	1	0	0
Turin Mountaineers			5.1	4.09	3.05	38.1	11.2	8.6	2.2	4.5	.17	88.5	.249	5791	1695	19	48	7	0



TANNEHILL, WASHINGTON



PLANK, PHILA. AMER.



O'Neill above
TURIN
Bradley below

3:21 PM No Selections Made

24 Players	Tm	Lg	AVG	G	AB	R	H	2B	3B	HR	TB	RBI	SO	BB	ASB	SB	CS	SBP	GDP
O'NEILL, M.	TU	TCBA	.386	44	176	30	68	5	5	3	92	33	13	7	0	0	0	-	4
CAREY, S.	TU	TCBA	.344	113	424	77	146	36	10	0	202	63	31	30	3	1	2	33.3	7
LACHANCE, C.	TU	TCBA	.330	69	224	26	74	9	2	1	90	40	28	8	6	4	2	66.7	6
BRADLEY, B.	TU	TCBA	.329	146	620	123	204	58	10	11	315	104	60	43	17	13	4	76.5	14
GREEN, D.	TU	TCBA	.318	137	570	114	181	23	10	0	224	66	42	60	42	29	13	69.0	2
MCCARTHY, J.	TU	TCBA	.309	99	356	62	110	35	2	0	149	54	26	24	17	14	3	82.4	4
CONROY, W.	TU	TCBA	.299	126	385	51	115	15	5	0	140	43	54	29	13	12	1	92.3	4
HEIDRICK, E.	TU	TCBA	.287	113	460	67	132	18	8	3	175	64	40	29	16	12	4	75.0	7
TANNEHILL, J.	TU	TCBA	.281	46	135	15	38	2	0	0	40	17	18	13	5	1	4	20.0	4
HEARNE, H.	TU	TCBA	.272	64	213	27	58	7	0	0	65	34	24	17	1	0	1	.0	2
PLANK, E.	TU	TCBA	.267	45	161	15	43	10	1	0	55	23	16	2	5	3	2	60.0	5
LEE, W.	TU	TCBA	.260	100	335	41	87	25	3	1	121	56	33	31	10	9	1	90.0	5
MATHISON, J.	TU	TCBA	.250	38	96	13	24	3	0	0	27	13	11	9	1	1	0	100.0	0
KLING, R.	TU	TCBA	.250	6	16	2	4	0	0	0	4	1	2	5	0	0	0	-	1
FARRELL, J.	TU	TCBA	.248	154	528	67	131	11	4	0	150	48	72	56	15	9	6	60.0	8
MCGUIRE, D.	TU	TCBA	.235	131	477	65	112	29	3	4	159	70	70	48	0	0	0	-	14
WAGNER, H.	TU	TCBA	.220	34	50	10	11	2	0	0	13	4	3	2	2	1	1	50.0	0
Pio, P.	TU	TCBA	.217	50	115	7	25	3	1	0	30	5	23	6	0	0	0	-	3
WASHBURN, L.	TU	TCBA	.200	6	15	4	3	0	0	0	3	0	1	1	1	0	1	.0	0
KISINGER, R.	TU	TCBA	.200	22	10	1	2	0	0	0	2	0	4	0	0	0	0	-	0
CRONIN, J.	TU	TCBA	.177	38	96	12	17	6	0	0	23	6	14	0	5	3	2	60.0	5
FELIX, H.	TU	TCBA	.143	11	7	0	1	0	0	0	1	0	1	4	0	0	0	-	1
FOHL, L.	TU	TCBA	.077	7	13	0	1	0	0	0	1	0	4	0	0	0	0	-	0
BERRY, J.	TU	TCBA	.000	3	7	0	0	0	0	0	0	0	4	1	0	0	0	-	0
Turin Mountaineers			.289	1602	5489	829	1587	297	64	23	2081	744	594	425	159	112	47	70.4	96





WELCOME TO
The
HISTORIC TOWN
of
HYDE PARK, N.Y.





Hyde Park Vitamen Draft Picks

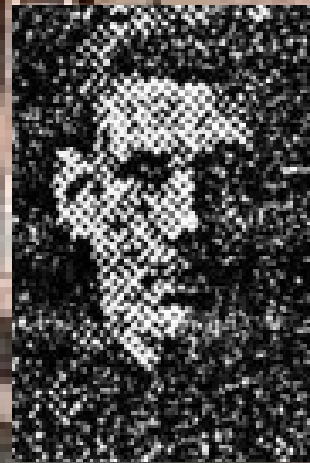


1-Tom Jones
5-Luis Castro

2-Henry Thielman
6-Roy Clark

3-Ham Iburg
7-Tim Donahue

4-Ike Butler
8-Frank Mahar



RESIDENCE OF FRANKLIN D. ROOSEVELT, HYDE PARK, N.Y.



1-Dick Harley, RF 2-Jimmy Barrett, LF 3-Bobby Wallace, SS 4-Jimmy Sheckard, CF
5-Harry Wolverton, 3B 6-Tom Daly, 2B 7-Jack Warner, C 8-Pop Dillon, 1B 9-Al Orth, P

Hyde Park Starting Nine for Opening Day

Hyde Park Vitamen Starting Lineup for Opening Day



11 Pitchers	Tm	Lg	W	L	PCT	SV	ERA	G	GS	CG	SHO	QS	IP	H	R	ER	HR	SO	BB
SIEVER, E.	HP	TCBA	16	9	.640	2	2.02	32	26	20	6	18	236.0	184	75	53	1	61	45
ADAMS, J.	HP	TCBA	0	0	-	0	2.02	8	0	0	0	0	13.1	14	5	3	0	4	3
DUGGLEBY, B.	HP	TCBA	21	13	.618	0	3.22	36	34	25	3	17	290.2	323	138	104	3	86	68
ORTH, A.	HP	TCBA	15	20	.429	1	3.53	39	36	27	2	13	300.2	368	166	118	11	88	50
CLARK, G.	HP	TCBA	0	0	-	0	3.60	1	0	0	0	0	5.0	8	2	2	0	2	1
MAGEE, B.	HP	TCBA	5	4	.556	1	3.74	13	7	4	2	3	74.2	89	41	31	3	26	24
IBURG, H.	HP	TCBA	6	10	.375	1	3.88	19	16	15	0	5	143.2	180	81	62	2	65	54
THIELMAN, H.	HP	TCBA	13	17	.433	1	4.20	34	31	21	2	9	259.1	255	145	121	1	77	130
Braun, R.	HP	TCBA	0	1	.000	0	4.85	9	1	0	0	0	13.0	22	15	7	0	3	5
WARNER, J.	HP	TCBA	0	0	-	0	5.40	1	0	0	0	0	3.1	5	2	2	1	1	1
BUTLER, I.	HP	TCBA	1	3	.250	1	7.82	10	3	1	0	0	38.0	72	49	33	0	13	19
Hyde Park Vitamen			77	77	.500	7	3.50	202	154	113	15	65	1377.2	1520	719	536	22	426	400

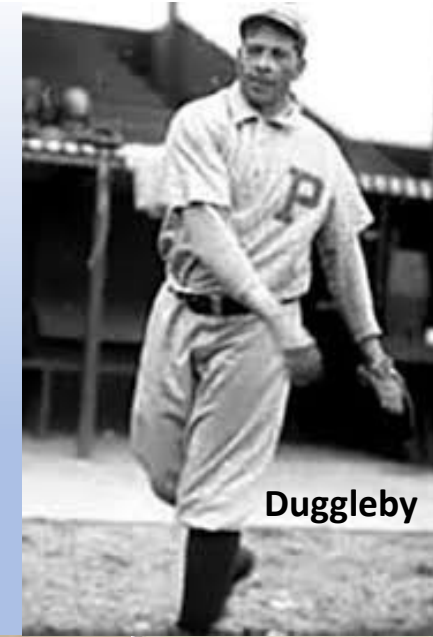
11 Pitchers	Tm	Lg	SUP/9	R/9	ERA	BF/9	BR/9	H/9	BB/9	SO/9	HR/9	ERPT	OBA	BF	BR	IBB	HB	WP	BK
SIEVER, E.	HP	TCBA	5.2	2.86	2.02	36.1	9.0	7.0	1.7	2.3	.04	42.3	.210	947	237	1	9	0	1
ADAMS, J.	HP	TCBA	.0	3.38	2.02	37.8	11.5	9.4	2.0	2.7	.00	2.4	.269	56	17	0	0	0	0
DUGGLEBY, B.	HP	TCBA	5.8	4.27	3.22	38.7	12.2	10.0	2.0	2.7	.09	13.4	.281	1251	395	5	9	5	1
ORTH, A.	HP	TCBA	5.0	4.97	3.53	39.8	12.7	11.0	1.3	2.6	.33	3.5	.297	1328	425	6	13	1	0
CLARK, G.	HP	TCBA	.0	3.60	3.60	41.4	16.2	14.4	1.8	3.6	.00	.0	.364	23	9	0	0	0	0
MAGEE, B.	HP	TCBA	2.5	4.94	3.74	40.0	13.7	10.7	2.7	3.1	.36	-.8	.300	332	114	2	3	1	0
IBURG, H.	HP	TCBA	3.4	5.07	3.88	41.3	15.0	11.3	3.4	4.1	.13	-4.0	.308	659	239	0	5	2	0
THIELMAN, H.	HP	TCBA	4.6	5.03	4.20	40.6	13.7	8.8	4.3	2.7	.03	-16.2	.256	1169	396	5	16	4	0
Braun, R.	HP	TCBA	2.8	10.38	4.85	44.3	18.7	15.2	3.5	2.1	.00	-1.7	.373	64	27	0	0	0	0
WARNER, J.	HP	TCBA	.0	5.40	5.40	40.5	16.2	13.5	2.7	2.7	2.70	-.7	.357	15	6	0	0	0	0
BUTLER, I.	HP	TCBA	-.9	11.61	7.82	49.5	21.8	17.1	4.5	3.1	.00	-17.7	.393	209	92	0	1	0	0
Hyde Park Vitamen			4.6	4.70	3.50	39.5	12.8	9.9	2.5	2.8	.14	20.5	.278	6053	1957	19	56	13	2

3:06 PM U-TCB903 TCBA Origins 1902 MLB TCBA Origins 1902 MLB Don Mahley Division Hyde Park Vitamen

25 Players	Tm	Lg	AVG	G	AB	R	H	2B	3B	HR	TB	RBI	SO	BB	ASB	SB	CS	SBP	GDP
CLARK, G.	HP	TCBA	.500	1	2	1	1	0	0	0	1	1	0	0	0	0	0	0	0
BARRETT, J.	HP	TCBA	.361	149	571	126	206	28	4	7	263	79	42	93	33	18	15	54.5	6
BUTLER, I.	HP	TCBA	.333	12	12	2	4	0	0	0	4	2	0	1	0	0	0	0	0
ADAMS, J.	HP	TCBA	.333	8	3	0	1	0	0	0	1	0	0	0	0	0	0	0	0
WARNER, J.	HP	TCBA	.302	127	461	49	139	19	21	0	200	65	58	38	0	0	0	0	5
WALLACE, B.	HP	TCBA	.296	141	554	87	164	41	6	0	217	87	57	43	23	18	5	78.3	8
SHECKARD, J.	HP	TCBA	.293	142	540	85	158	23	10	0	201	98	51	58	32	21	11	65.6	7
HARLEY, D.	HP	TCBA	.286	137	532	106	152	13	10	4	197	52	51	57	34	26	8	76.5	3
WOLVERTON, H.	HP	TCBA	.279	103	365	49	102	14	7	0	130	58	31	25	8	4	4	50.0	3
JONES, T.	HP	TCBA	.271	47	155	18	42	8	1	0	52	14	18	7	3	1	2	33.3	4
SULLIVAN, B.	HP	TCBA	.256	93	316	32	81	21	3	0	108	48	52	8	20	15	5	75.0	5
Braun, R.	HP	TCBA	.230	89	300	35	69	13	4	6	108	43	56	18	0	0	0	0	9
DALY, T.	HP	TCBA	.212	122	434	52	92	16	2	1	115	46	60	46	20	11	9	55.0	7
DILLON, P.	HP	TCBA	.211	102	270	31	57	4	3	0	67	19	46	34	0	0	0	0	2
CASTRO, L.	HP	TCBA	.209	51	177	19	37	10	2	0	51	30	23	8	2	0	2	.0	1
DUGGLEBY, B.	HP	TCBA	.172	36	116	11	20	4	0	0	24	9	15	5	3	2	1	66.7	5
THIELMAN, H.	HP	TCBA	.162	34	99	5	16	0	3	0	22	2	18	2	2	1	1	50.0	1
ORTH, A.	HP	TCBA	.160	42	119	16	19	1	3	1	29	14	24	12	1	0	1	.0	2
SIEVER, E.	HP	TCBA	.154	32	91	8	14	3	0	0	17	7	13	2	0	0	0	0	10
IBURG, H.	HP	TCBA	.113	19	53	2	6	1	0	0	7	1	13	1	2	1	1	50.0	1
MAGEE, B.	HP	TCBA	.111	13	27	1	3	0	0	0	3	1	3	0	0	0	0	0	0
DONAHUE, T.	HP	TCBA	.097	13	31	1	3	0	0	0	3	0	2	0	0	0	0	0	1
MAHAR, F.	HP	TCBA	.094	12	32	0	3	0	0	0	3	0	8	0	0	0	0	0	0
CLARK, R.	HP	TCBA	.082	34	85	7	7	1	0	0	8	2	12	4	5	5	0	100.0	0
THOMAS, B.	HP	TCBA	.043	12	23	2	1	0	0	0	1	1	5	3	0	0	0	0	0
Hyde Park Vitamen			.260	1571	5368	745	1397	220	79	19	1832	679	658	465	188	123	65	65.4	80



H
Y
D
E
P
A
R
K



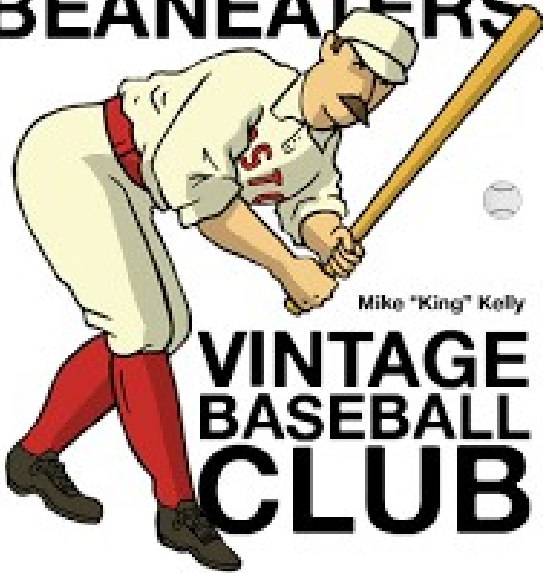
Duggleby



One of
a
hundred
and fifty
prominent
Baseball
players



BOSTON BEANEATERS



Mike "King" Kelly

VINTAGE BASEBALL CLUB





1-Fred Glade
5-Bill Mellor

2-Tim Flood
6-Tom Fleming

3-Andy Oyler
7-John Durham

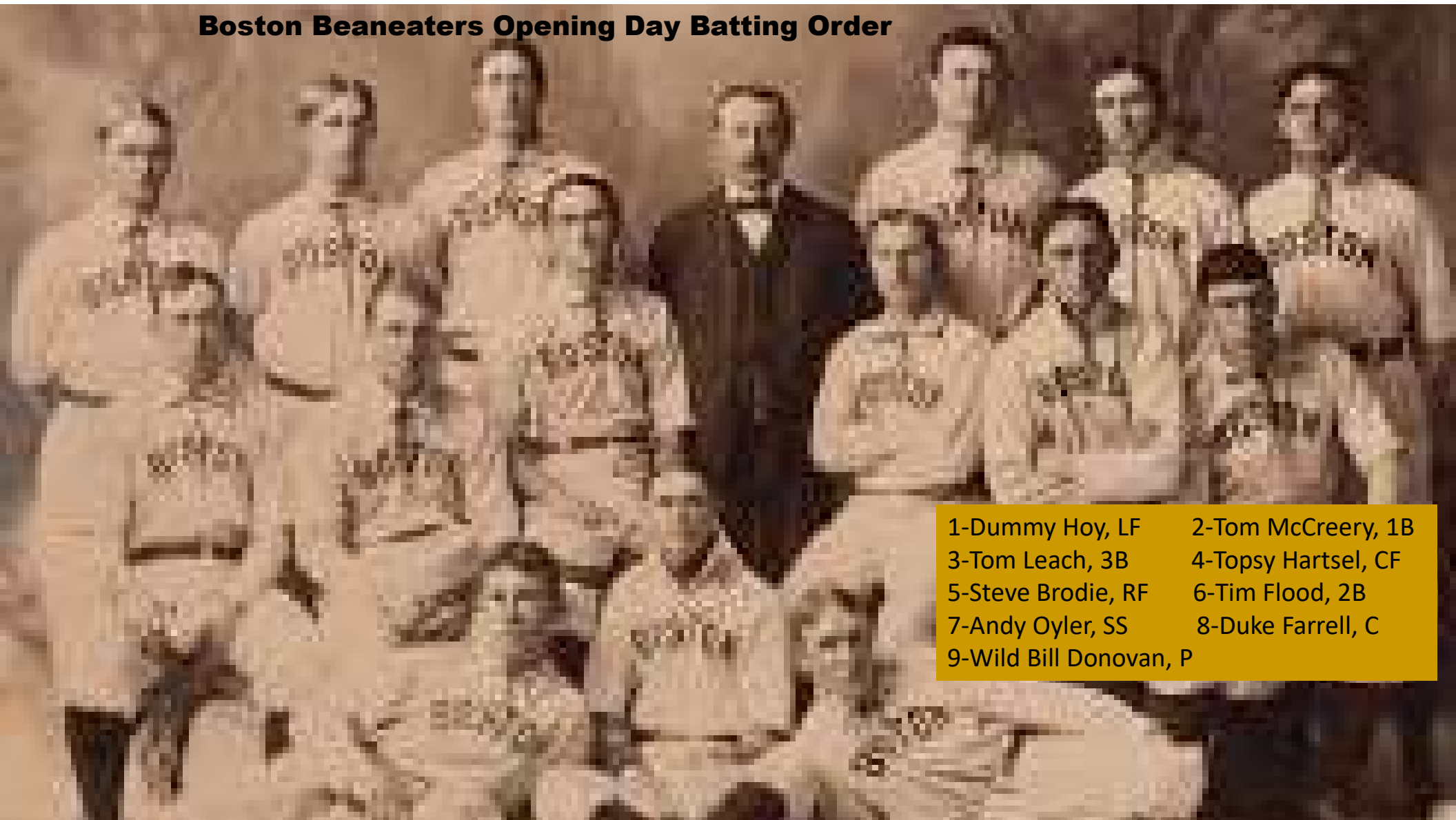
4-Cy Vorhees
8-PASS



Boston Beaneaters Draft Picks



Boston Beaneaters Opening Day Batting Order



1-Dummy Hoy, LF	2-Tom McCreery, 1B
3-Tom Leach, 3B	4-Topsy Hartsel, CF
5-Steve Brodie, RF	6-Tim Flood, 2B
7-Andy Oyler, SS	8-Duke Farrell, C
9-Wild Bill Donovan, P	

Boston Beaneaters Opening Day Starting Lineup



9 Pitchers	Tm	Lg	W	L	PCT	SV	ERA	G	GS	CG	SHO	QS	IP	H	R	ER	HR	SO	BB
MCCANN, G.	BS	TCBA	3	3	.500	0	1.53	6	5	5	2	4	47.0	31	9	8	1	20	19
PATTERSON, R.	BS	TCBA	19	16	.543	0	2.53	39	37	34	6	21	334.0	265	121	94	1	109	97
DONOVAN, W.	BS	TCBA	17	20	.459	0	3.59	40	36	31	4	17	313.2	307	164	125	0	194	125
CALLAHAN, N.	BS	TCBA	15	20	.429	1	3.86	37	36	30	2	13	303.1	333	171	130	0	158	101
DURHAM, J.	BS	TCBA	4	4	.500	0	3.86	10	8	6	0	4	79.1	92	43	34	2	34	35
LAWSON, B.	BS	TCBA	1	1	.500	0	4.55	7	1	1	0	1	27.2	33	18	14	0	24	9
VORHEES, C.	BS	TCBA	4	4	.500	0	4.66	14	8	4	1	2	77.1	93	55	40	0	56	34
SWORMSTEDT, L.	BS	TCBA	5	17	.227	0	5.16	23	22	21	0	5	188.1	260	139	108	6	52	67
GLADE, F.	BS	TCBA	0	1	.000	0	5.25	3	1	0	0	0	12.0	19	7	7	0	6	4
Boston Beaneaters			68	86	.442	1	3.65	179	154	132	15	67	1382.2	1433	727	560	10	653	491

9 Pitchers	Tm	Lg	SUP/9	R/9	ERA	BF/9	BR/9	H/9	BB/9	SO/9	HR/9	ERPT	OBA	BF	BR	IBB	HB	WP	BK
MCCANN, G.	BS	TCBA	2.9	1.72	1.53	36.4	9.4	5.9	3.4	3.8	.19	11.0	.186	190	49	1	0	0	0
PATTERSON, R.	BS	TCBA	4.5	3.26	2.53	36.6	9.7	7.1	2.5	2.9	.03	40.9	.215	1360	360	4	2	7	0
DONOVAN, W.	BS	TCBA	4.5	4.71	3.59	39.6	12.8	8.8	3.5	5.6	.00	1.7	.253	1379	445	2	15	6	0
CALLAHAN, N.	BS	TCBA	4.9	5.07	3.86	39.9	13.0	9.9	2.9	4.7	.00	-7.5	.276	1346	438	3	7	2	0
DURHAM, J.	BS	TCBA	4.1	4.88	3.86	40.5	14.3	10.4	3.9	3.9	.23	-2.0	.293	357	126	1	0	3	0
LAWSON, B.	BS	TCBA	1.3	5.86	4.55	40.0	13.7	10.7	2.9	7.8	.00	-2.8	.289	123	42	0	0	2	0
VORHEES, C.	BS	TCBA	7.1	6.40	4.66	42.9	15.1	10.8	3.8	6.5	.00	-8.8	.284	369	130	1	4	2	0
SWORMSTEDT, L.	BS	TCBA	3.6	6.64	5.16	42.4	15.6	12.4	3.1	2.5	.29	-31.9	.323	888	326	2	1	0	0
GLADE, F.	BS	TCBA	1.5	5.25	5.25	45.0	19.5	14.3	3.0	4.5	.00	-2.2	.365	60	26	0	3	0	0
Boston Beaneaters			4.4	4.73	3.65	39.5	12.6	9.3	3.1	4.3	.07	-1.5	.264	6072	1942	14	32	22	0

StatMaster - [U-TCB903 - Boston Beaneaters - Player Batting]
 Select Reports Multi Options Window Help

24 Players	Tm	Lg	AVG	G	AB	R	H	2B	3B	HR	TB	RBI	SO	BB	ASB	SB	CS	SBP	GDP
FLEMING, T.	BS	TCBA	.467	7	15	2	7	0	0	0	7	1	1	3	0	0	0	-	0
VORHEES, C.	BS	TCBA	.387	14	31	6	12	0	0	0	12	2	2	4	0	0	0	-	0
BRANSFIELD, K.	BS	TCBA	.356	108	432	61	154	28	3	0	188	74	41	27	38	27	11	71.1	4
BECK, E.	BS	TCBA	.347	72	274	41	95	8	2	2	113	44	30	8	5	4	1	80.0	5
WOOD, B.	BS	TCBA	.333	64	216	30	72	19	2	0	95	37	16	25	1	0	1	.0	5
HOY, D.	BS	TCBA	.291	80	306	55	89	17	2	1	113	34	31	48	20	15	5	75.0	6
BRODIE, S.	BS	TCBA	.282	113	433	44	122	8	0	3	139	61	39	32	17	16	1	94.1	7
MELLOR, B.	BS	TCBA	.280	12	25	2	7	5	0	0	12	4	0	3	0	0	0	-	2
HARTSEL, T.	BS	TCBA	.279	153	616	128	172	27	12	4	235	52	65	108	48	38	10	79.2	11
LEACH, T.	BS	TCBA	.277	146	592	99	164	21	20	6	243	110	65	48	36	25	11	69.4	10
MCCREERY, T.	BS	TCBA	.265	102	388	46	103	8	3	4	129	49	51	33	16	11	5	68.8	3
LaFarge, E.	BS	TCBA	.263	61	186	18	49	10	7	1	76	28	31	16	1	1	0	100.0	7
CALLAHAN, N.	BS	TCBA	.242	46	153	15	37	3	0	0	40	15	22	1	3	1	2	33.3	2
FLOOD, T.	BS	TCBA	.229	149	519	43	119	12	3	3	146	52	73	38	12	5	7	41.7	12
MCALLISTER, S.	BS	TCBA	.219	73	228	21	50	7	3	0	63	18	36	9	0	0	0	-	4
FARRELL, D.	BS	TCBA	.209	86	325	18	68	6	2	0	78	26	61	10	6	5	1	83.3	7
LAWSON, B.	BS	TCBA	.200	7	10	0	2	0	0	0	2	2	2	0	0	0	0	-	0
OYLER, A.	BS	TCBA	.198	84	308	41	61	4	0	2	71	24	45	33	12	8	4	66.7	4
DONOVAN, W.	BS	TCBA	.156	41	122	17	19	2	1	0	23	6	29	5	13	11	2	84.6	3
PATTERSON, R.	BS	TCBA	.141	39	128	13	18	0	0	0	18	10	21	4	0	0	0	-	2
SWORMSTEDT, L.	BS	TCBA	.134	23	67	2	9	0	0	0	9	0	12	0	0	0	0	-	2
MCCANN, G.	BS	TCBA	.059	6	17	1	1	0	1	0	3	0	3	0	0	0	0	-	0
DURHAM, J.	BS	TCBA	.000	10	27	2	0	0	0	0	0	0	4	4	0	0	0	-	1
GLADE, F.	BS	TCBA	.000	3	4	0	0	0	0	0	0	0	2	0	0	0	0	-	0
Boston Beaneaters			.264	1499	5422	705	1430	185	61	26	1815	649	682	459	228	167	61	73.2	97



PATTERSON, P. Chicago, A.



BRADENTON, FL

BUCKEYES





1-Homer Smoot
5-Lave Winham

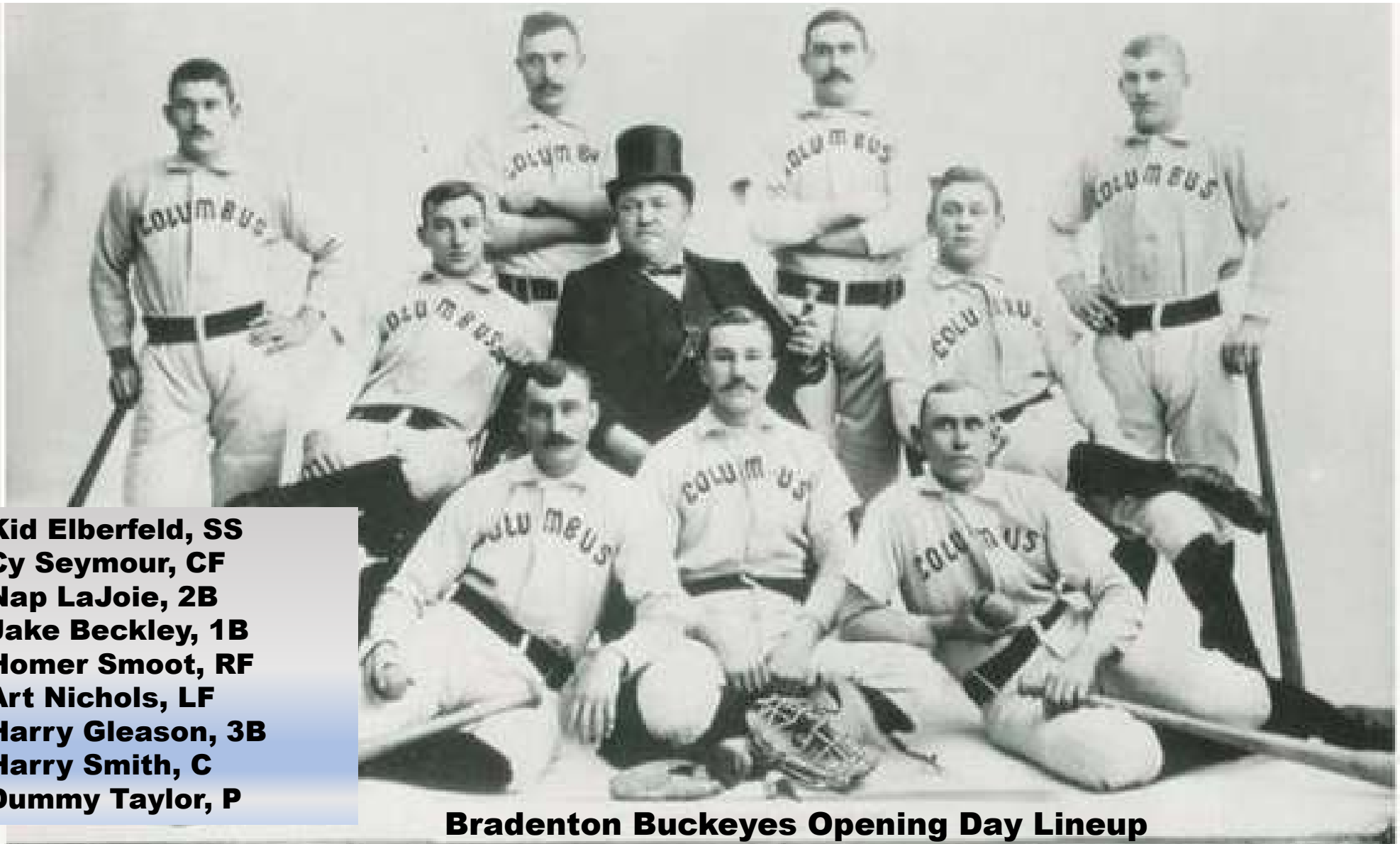
2-Gus Dorner
6-Paddy Greene

3-Tom Walker
7-John Murphy

4-Martin Glendon
8-Otto Williams



Bradenton Buckeyes Draft Picks



**1-Kid Elberfeld, SS
2-Cy Seymour, CF
3-Nap LaJoie, 2B
4-Jake Beckley, 1B
5-Homer Smoot, RF
6-Art Nichols, LF
7-Harry Gleason, 3B
8-Harry Smith, C
9-Dummy Taylor, P**

Bradenton Buckeyes Opening Day Lineup



Bradenton Buckeyes Opening Day Lineup

12 Pitchers																		
Tm	Lg	W	L	PCT	SV	ERA	G	GS	CG	SHO	QS	IP	H	R	ER	HR	SO	BB
SEYMOUR, C.	BR TCBA	0	0	-	0	.00	2	0	0	0	0	1.2	1	0	0	0	1	0
FRIEL, B.	BR TCBA	1	1	.500	0	1.17	9	0	0	0	0	7.2	4	2	1	0	2	3
TAYLOR, D.	BR TCBA	27	7	.794	0	2.35	37	36	21	3	25	291.1	245	97	76	1	153	66
DORNER, G.	BR TCBA	6	1	.857	1	3.06	14	4	4	1	2	47.0	32	21	16	0	14	11
WALKER, T.	BR TCBA	9	11	.450	0	3.77	30	24	13	0	9	186.1	253	114	78	0	70	33
HARPER, J.	BR TCBA	14	16	.467	0	3.94	32	31	15	0	14	239.2	254	138	105	4	130	99
WILTSE, S.	BR TCBA	8	28	.222	0	5.28	39	37	20	0	9	288.1	418	216	169	3	121	97
GREENE, P.	BR TCBA	1	0	1.000	0	5.31	31	0	0	0	0	84.2	135	74	50	2	28	23
GLENDON, M.	BR TCBA	0	5	.000	0	5.91	14	6	1	0	0	56.1	89	48	37	0	25	28
PRENTISS, G.	BR TCBA	5	11	.313	0	6.24	27	15	8	0	3	131.1	201	122	91	3	47	50
WINHAM, L.	BR TCBA	1	0	1.000	2	6.35	8	0	0	0	0	5.2	7	4	4	0	2	1
Wood, W.	BR TCBA	0	1	.000	15	9.77	20	0	0	0	0	15.2	32	19	17	0	3	4
Bradenton Buckeyes		72	81	.471	18	4.28	263	153	82	4	62	1355.2	1671	855	644	13	596	415

12 Pitchers																		
Tm	Lg	SUP/9	R/9	ERA	BF/9	BR/9	H/9	BB/9	SO/9	HR/9	ERPT	OBA	BF	BR	IBB	HB	WP	BK
SEYMOUR, C.	BR TCBA	.0	.00	.00	43.2	5.4	5.4	.0	5.4	.00	.7	.143	8	1	0	0	0	0
FRIEL, B.	BR TCBA	.0	2.35	1.17	38.7	8.2	4.7	2.3	2.3	.00	2.1	.138	33	7	1	1	0	0
TAYLOR, D.	BR TCBA	5.1	3.00	2.35	36.6	9.7	7.6	2.0	4.7	.03	41.7	.229	1184	315	0	4	11	0
DORNER, G.	BR TCBA	5.9	4.02	3.06	36.0	8.8	6.1	2.1	2.7	.00	3.0	.187	188	46	0	3	1	0
WALKER, T.	BR TCBA	4.8	5.51	3.77	41.1	14.2	12.2	1.5	3.4	.00	-2.7	.321	850	293	1	8	0	0
HARPER, J.	BR TCBA	4.3	5.18	3.94	40.1	13.5	9.5	3.6	4.9	.15	-8.2	.271	1067	359	2	8	8	2
WILTSE, S.	BR TCBA	3.9	6.74	5.28	43.1	16.3	13.0	2.9	3.8	.09	-52.5	.337	1380	522	4	11	9	0
GREENE, P.	BR TCBA	.0	7.87	5.31	44.2	17.0	14.4	2.3	3.0	.21	-15.8	.351	416	160	1	3	0	1
GLENDON, M.	BR TCBA	2.4	7.67	5.91	45.1	18.7	14.2	4.5	4.0	.00	-14.2	.366	282	117	0	0	0	0
PRENTISS, G.	BR TCBA	3.6	8.36	6.24	44.3	17.2	13.8	3.4	3.2	.21	-37.9	.343	647	251	0	0	7	0
WINHAM, L.	BR TCBA	.0	6.35	6.35	42.9	12.7	11.1	1.6	3.2	.00	-1.7	.269	27	8	0	0	0	0
Wood, W.	BR TCBA	.0	10.91	9.77	48.3	20.7	18.4	2.3	1.7	.00	-10.7	.405	84	36	0	0	0	0
Bradenton Buckeyes		4.0	5.68	4.28	40.9	14.0	11.1	2.7	4.0	.09	-96.4	.300	6166	2115	9	38	36	3

6:15 PM U-TCB903 TCBA Origins 1902 MLB TCBA Origins 1902 MLB Stu McCorkindale Division Bradenton Buckeyes



29 Players																		
Tm	Lg	AVG	G	AB	R	H	2B	3B	HR	TB	RBI	SO	BB	ASB	SB	CS	SBP	GDP
MURPHY, J.	BR TCBA	.571	7	7	3	4	2	0	0	6	2	2	3	0	0	0	-	0
LAJOIE, N.	BR TCBA	.410	97	349	72	143	39	3	2	194	77	13	18	25	17	8	68.0	6
WILLIAMS, O.	BR TCBA	.364	11	11	4	4	0	0	0	4	1	1	0	1	1	0	100.0	0
HARVEY, E.	BR TCBA	.345	30	58	7	20	2	0	0	22	17	6	4	2	2	0	100.0	1
BECKLEY, J.	BR TCBA	.317	142	564	81	179	21	9	2	224	104	37	35	17	9	8	52.9	6
SMOOT, H.	BR TCBA	.316	148	553	83	175	17	5	3	211	95	56	46	29	16	13	55.2	6
SEYMOUR, C.	BR TCBA	.316	146	583	106	184	21	13	5	246	72	43	36	23	13	10	56.5	6
VAN HALTREN, G.	BR TCBA	.308	42	91	8	28	2	0	0	30	15	8	13	8	5	3	62.5	1
DORNER, G.	BR TCBA	.261	16	23	3	6	0	0	0	6	1	1	1	0	0	0	-	0
HOPKINS, M.	BR TCBA	.250	1	4	0	1	0	0	0	1	0	0	0	0	0	0	-	0
ELBERFELD, K.	BR TCBA	.249	144	550	108	137	19	7	1	173	33	56	85	33	21	12	63.6	5
NICHOLS, A.	BR TCBA	.246	84	264	35	65	5	0	1	73	39	23	30	23	17	6	73.9	3
WILTSE, S.	BR TCBA	.246	41	126	20	31	7	4	2	52	13	19	11	0	0	0	-	4
MALONEY, B.	BR TCBA	.231	96	294	32	68	7	0	2	81	24	37	15	6	3	3	50.0	4
WALL, J.	BR TCBA	.229	33	35	1	8	3	0	0	11	1	4	8	0	0	0	-	0
Wood, W.	BR TCBA	.214	116	379	26	81	9	2	6	112	49	90	22	0	0	0	-	14
FRIEL, B.	BR TCBA	.209	82	230	19	48	5	1	1	58	25	43	13	4	2	2	50.0	2
GLEASON, H.	BR TCBA	.202	67	193	28	39	7	3	1	55	24	24	10	5	3	2	60.0	2
HARTMAN, F.	BR TCBA	.197	70	188	14	37	1	0	0	38	10	20	5	0	0	0	-	1
SMITH, H.	BR TCBA	.190	126	348	27	66	8	4	0	82	24	52	10	4	2	2	50.0	5
GREENE, P.	BR TCBA	.175	50	57	5	10	1	0	0	11	4	6	0	0	0	0	-	0
HARPER, J.	BR TCBA	.155	32	84	12	13	2	0	0	15	6	12	7	0	0	0	-	1
PRENTISS, G.	BR TCBA	.140	27	43	5	6	0	0	0	6	2	4	1	0	0	0	-	1
WALKER, T.	BR TCBA	.110	30	73	1	8	0	0	0	8	3	8	0	1	1	0	100.0	0
TAYLOR, D.	BR TCBA	.092	37	98	8	9	0	0	0	9	7	11	10	1	0	1	.0	5
MCDONALD, J.	BR TCBA	.077	5	13	0	1	0	0	0	1	1	4	0	0	0	0	-	0
GOCHNAUER, J.	BR TCBA	.032	26	31	3	1	0	0	0	1	0	8	1	0	0	0	-	1
GLENDON, M.	BR TCBA	.000	14	14	1	0	0	0	0	0	0	2	0	0	0	0	-	0
WINHAM, L.	BR TCBA	-	8	0	0	0	0	0	0	0	0	0	0	0	0	0	-	0
Bradenton Buckeyes		.261	1728	5263	712	1372	178	51	26	1730	649	590	384	182	112	70	61.5	74

6:15 PM U-TCB903 TCBA Origins 1902 MLB TCBA Origins 1902 MLB Stu McCorkindale Division Bradenton Buckeyes



U-TCB903 - TCBA Origins 1902 MLB - Standings on Sep. 23, 1902

	W	L	PCT	GB
TCBA Origins 1902 MLB				
Don Mahley Division				
Hyde Park Vitamen	77	77	.500	-
South Starrucca Ainspans	74	80	.481	3.0
Boston Beaneaters	68	86	.442	9.0
Long Island Islanders	64	90	.416	13.0
Stu McCorkindale Division				
Cleveland Naps	100	52	.658	-
Mexicali Mallards	89	65	.578	12.0
Bradenton Buckeyes	72	81	.471	28.5
Bergen Barflies	67	86	.438	33.5
Bill Kirwin Division				
Newton Buccs	100	54	.649	-
Grand Rapids Wolverines	70	84	.455	30.0
Mimosa Mirthmakers	70	84	.455	30.0
Waukesha Freeman	68	86	.442	32.0
Richard Seitz Division				
Turin Mountaineers	91	63	.591	-
Hereford Highlanders	78	76	.506	13.0
Wilderness Wraiths	75	79	.487	16.0
Buffalo Mules	67	87	.435	24.0

FINAL STANDINGS

1903

The 10 players with the most Runs Scored

Name	Tm	Lg	R	PA
CRAWFORD, S.	GW	TCBA	151	768
DELAHANTY, E.	GW	TCBA	141	643
HARTSEL, T.	BS	TCBA	128	728
BARRETT, J.	HP	TCBA	126	677
BURKETT, J.	HH	TCBA	125	719
BRADLEY, B.	TU	TCBA	123	684
SELBACH, K.	BE	TCBA	122	675
FREEMAN, B.	GW	TCBA	120	710
STRANG, S.	HH	TCBA	120	730
WILLIAMS, J.	ME	TCBA	117	633

The 10 players with the most Runs Batted In

Name	Tm	Lg	RBI	PA
FREEMAN, B.	GW	TCBA	167	710
SEYBOLD, S.	BE	TCBA	138	643
DAVIS, H.	HH	TCBA	129	679
KEISTER, B.	CL	TCBA	114	541
LEACH, T.	BS	TCBA	110	665
DELAHANTY, E.	GW	TCBA	107	643
HICKMAN, C.	BE	TCBA	106	637
BECKLEY, J.	BR	TCBA	104	615
BRADLEY, B.	TU	TCBA	104	684
BARRY, S.	HH	TCBA	103	685

The 10 players with the most Triples

Name	Tm	Lg	3B	PA
WILLIAMS, J.	ME	TCBA	22	633
WARNER, J.	HP	TCBA	21	502
LEACH, T.	BS	TCBA	20	665
FREEMAN, B.	GW	TCBA	20	710
FERRIS, H.	NB	TCBA	16	509
WAGNER, H.	WA	TCBA	16	629
MCGANN, D.	NB	TCBA	15	619
CRAWFORD, S.	GW	TCBA	14	768
FLICK, E.	BE	TCBA	13	583
SEYMOUR, C.	BR	TCBA	13	639

The 18 players with the most Home Runs

Name	Tm	Lg	HR
SEYBOLD, S.	BE	TCBA	20
HICKMAN, C.	BE	TCBA	13
FREEMAN, B.	GW	TCBA	13
DAVIS, H.	HH	TCBA	11
BRADLEY, B.	TU	TCBA	11
RYAN, J.	WW	TCBA	9
KEISTER, B.	CL	TCBA	8
BARRETT, J.	HP	TCBA	7
BURKETT, J.	HH	TCBA	7

9 players tied at 6

The 10 players with the most Hits

Name	Tm	Lg	H	PA
HICKMAN, C.	BE	TCBA	239	637
CRAWFORD, S.	GW	TCBA	236	768
DELAHANTY, E.	GW	TCBA	229	643
DAVIS, H.	HH	TCBA	229	679
KEELER, W.	WW	TCBA	219	664
FREEMAN, B.	GW	TCBA	217	710
BURKETT, J.	HH	TCBA	213	719
BEAUMONT, G.	NB	TCBA	210	655
CROSS, L.	WA	TCBA	207	649
BARRETT, J.	HP	TCBA	206	677

The 10 players with the most Doubles

Name	Tm	Lg	2B	PA
BRADLEY, B.	TU	TCBA	58	684
DAVIS, H.	HH	TCBA	57	679
FREEMAN, B.	GW	TCBA	54	710
DELAHANTY, E.	GW	TCBA	50	643
CROSS, L.	WA	TCBA	49	649
HICKMAN, C.	BE	TCBA	45	637
KEISTER, B.	CL	TCBA	42	541
WALLACE, B.	HP	TCBA	41	604
LAJOIE, N.	BR	TCBA	39	391
WILLIAMS, J.	ME	TCBA	39	633

1903 ORIGINS BATTING LEADERS



The 10 players with the highest Batting Average

Name	Tm	Lg	AVG	PA
DELAHANTY, E.	GW	TCBA	.416	643
HICKMAN, C.	BE	TCBA	.391	637
CLARKE, F.	MI	TCBA	.363	591
BARRETT, J.	HP	TCBA	.361	677
DAVIS, H.	HH	TCBA	.359	679
HEMPHILL, C.	CL	TCBA	.355	551
BEAUMONT, G.	NB	TCBA	.355	655
KEELER, W.	WW	TCBA	.348	664
CROSS, L.	WA	TCBA	.342	649
DOUGHERTY, P.	ME	TCBA	.341	534

The 10 players with the highest Slugging Average

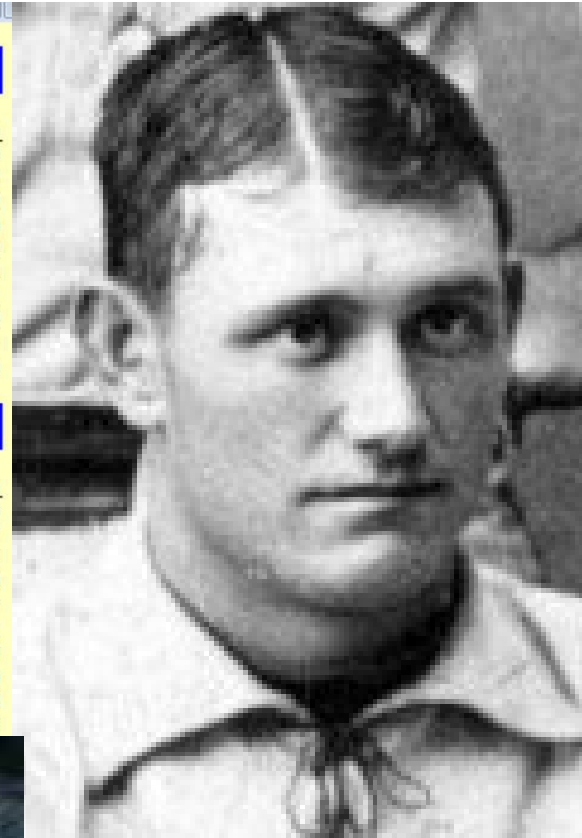
Name	Tm	Lg	SLG	PA
DELAHANTY, E.	GW	TCBA	.580	643
HICKMAN, C.	BE	TCBA	.561	637
FREEMAN, B.	GW	TCBA	.538	710
DAVIS, H.	HH	TCBA	.525	679
BRADLEY, B.	TU	TCBA	.508	684
SEYBOLD, S.	BE	TCBA	.506	643
CLARKE, F.	MI	TCBA	.485	591
RYAN, J.	WW	TCBA	.483	563
KEISTER, B.	CL	TCBA	.475	541
WILLIAMS, J.	ME	TCBA	.472	633

The 10 players with the highest On Base Percentage

Name	Tm	Lg	OBP	PA
DELAHANTY, E.	GW	TCBA	.487	643
CLARKE, F.	MI	TCBA	.465	591
BARRETT, J.	HP	TCBA	.448	677
TENNEY, F.	CL	TCBA	.433	636
BURKETT, J.	HH	TCBA	.413	719
HICKMAN, C.	BE	TCBA	.409	637
HEMPHILL, C.	CL	TCBA	.409	551
THOMAS, R.	LI	TCBA	.407	698
DOUGHERTY, P.	ME	TCBA	.406	534
SLAGLE, J.	BU	TCBA	.404	573

The 10 players with the most Runs Created

Name	Tm	Lg	RC	PA
DELAHANTY, E.	GW	TCBA	166.0	643
HICKMAN, C.	BE	TCBA	134.9	637
DAVIS, H.	HH	TCBA	133.8	679
FREEMAN, B.	GW	TCBA	130.5	710
BARRETT, J.	HP	TCBA	125.8	677
CLARKE, F.	MI	TCBA	124.8	591
CRAWFORD, S.	GW	TCBA	124.5	768
BURKETT, J.	HH	TCBA	120.6	719
BRADLEY, B.	TU	TCBA	117.2	684
CROSS, L.	WA	TCBA	104.9	649



The 11 players with the best Wins - Losses

Name	Tm	Lg	W - L
WADDELL, R.	NB	TCBA	34-9
TAYLOR, J.	CL	TCBA	32-9
TAYLOR, D.	BR	TCBA	27-7
PLANK, E.	TU	TCBA	26-15
BERNHARD, B.	CL	TCBA	24-6
TANNEHILL, J.	TU	TCBA	24-10
HAHN, N.	ME	TCBA	24-13
CHESBRO, J.	BE	TCBA	24-15

3 players tied at 23



The 10 players with the lowest Earned Run Average

Name	Tm	Lg	ERA	IP
BERNHARD, B.	CL	TCBA	1.42	278.0
WADDELL, R.	NB	TCBA	1.68	342.1
YOUNG, C.	SO	TCBA	1.85	355.2
TANNEHILL, J.	TU	TCBA	1.91	269.0
TAYLOR, J.	CL	TCBA	1.93	364.0
SIEVER, E.	HP	TCBA	2.02	236.0
PITTINGER, T.	WA	TCBA	2.15	264.1
HAHN, N.	ME	TCBA	2.20	339.2
JOSS, A.	WA	TCBA	2.26	246.2
TAYLOR, D.	BR	TCBA	2.35	291.1



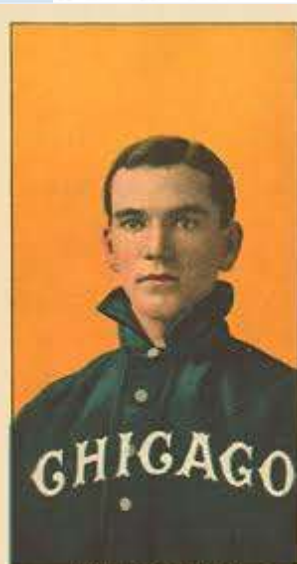
StatMaster - [U-TCB903 - TCBA Origins 1902 MLB - Pitching Leaders]

Select Reports Multi Options Window Help

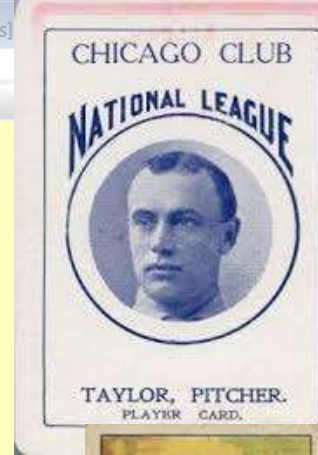


The 10 players with the most Strikeouts

Name	Tm	Lg	SO	IP
WADDELL, R.	NB	TCBA	238	342.1
WHITE, D.	LI	TCBA	224	330.2
PLANK, E.	TU	TCBA	217	358.2
YOUNG, C.	SO	TCBA	216	355.2
POWELL, J.	MI	TCBA	209	328.0
DONOVAN, W.	BS	TCBA	194	313.2
WILLIS, V.	HH	TCBA	191	343.2
MATHEWSON, C.	CL	TCBA	181	324.1
MULLIN, G.	SO	TCBA	169	319.0
DRESSER, B.	GW	TCBA	166	193.0



PITCHING LEADERS 1903 ORIGINS



A close-up photograph of a baseball, showing its characteristic red stitching on a tan leather surface. The baseball is centered in the frame. Overlaid on the baseball is the text 'BASEBALL' in blue, outlined letters on the top line, and 'PLAYOFFS' in red, outlined letters on the bottom line. The text is bold and has a slight shadow effect, making it stand out against the textured background of the ball.

BASEBALL
PLAYOFFS

SEMI

FINAL

SEMI-FINALS ORIGINS

1903 CHAMPIONSHIP

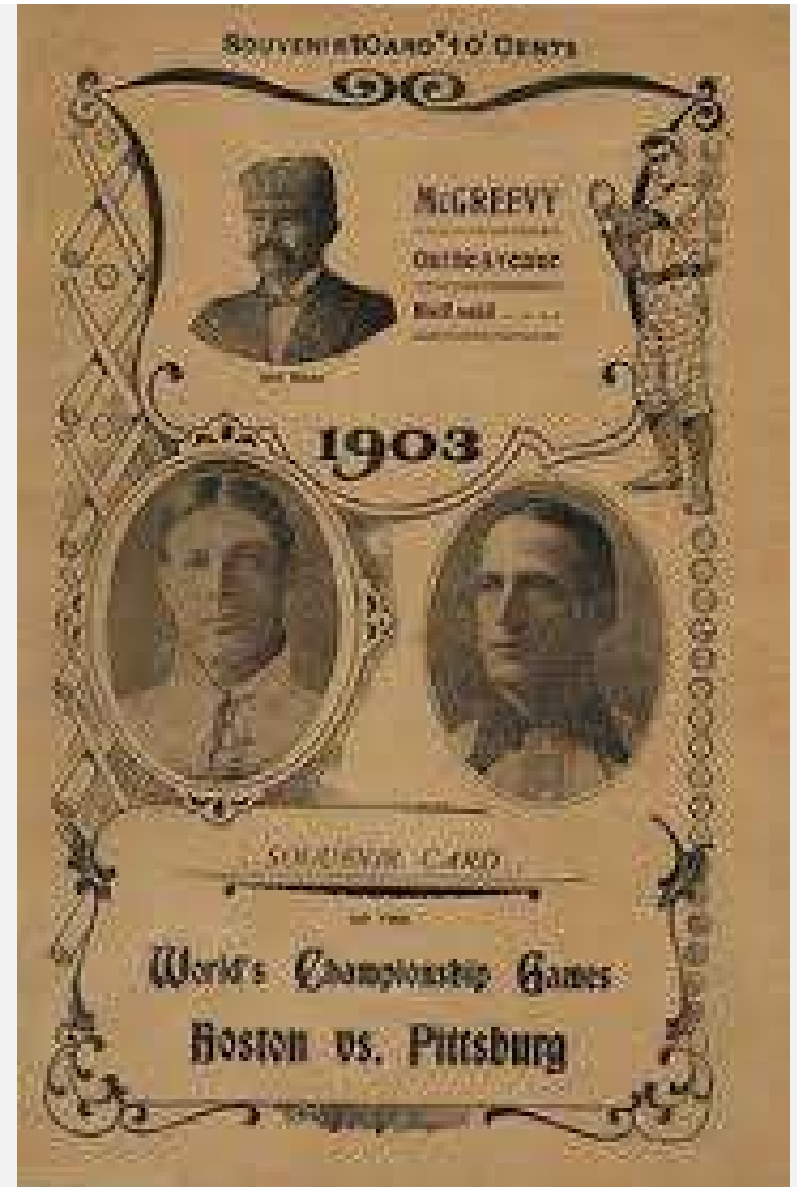
Turin tops Newton, 4 games to 2

Cleveland defeats Hyde Park, 4 games to 1

U-TCB903 - TCBA Origins 1902 MLB Semi Finals - Game Summaries

11 Games Played

Date	No.	Team	R	H	E	G Sc	Starters	Decisions	Save
10/02/02	6	Turin Mountaineers	4	7	0	69	M. O'NEILL	W, M. O'NEILL	None
8:51m	6	Newton Buccs	1	8	2	58	R. WADDELL	L, R. WADDELL	
09/30/02	5	Cleveland Naps	8	12	2	69	B. BERNHARD	W, B. BERNHARD	None
20:37m	5	Hyde Park Vitamen	2	6	1	38	B. DUGGLEBY	L, B. DUGGLEBY	
09/30/02	5	Newton Buccs	2	3	1	28	S. LEEVER	L, S. LEEVER	
10:07m	5	Turin Mountaineers	7	13	2	77	E. PLANK	W, E. PLANK	None
09/29/02	4	Cleveland Naps	6	13	2	86	J. TAYLOR	W, J. TAYLOR	None
14:51m	4	Hyde Park Vitamen	0	1	0	39	A. ORTH	L, A. ORTH	
09/29/02	4	Newton Buccs	4	6	1	84	R. WADDELL	W, R. WADDELL	None
9:50m	4	Turin Mountaineers	0	6	1	59	J. TANNEHILL	L, J. TANNEHILL	
09/28/02	3	Cleveland Naps	4	6	0	45	C. MATHEWSON	L, C. MATHEWSON	
16:48m	3	Hyde Park Vitamen	5	7	1	53	E. SIEVER	W, E. SIEVER	B. DUGGLEBY
09/28/02	3	Newton Buccs	7	13	0	4	D. NEWTON	L, D. NEWTON	
13:09m	3	Turin Mountaineers	12	13	1	34	M. O'NEILL	W, M. O'NEILL	None
09/26/02	2	Hyde Park Vitamen	0	4	2	55	A. ORTH	L, A. ORTH	
13:48m	2	Cleveland Naps	3	8	2	81	B. BERNHARD	W, B. BERNHARD	None
09/26/02	2	Turin Mountaineers	1	5	2	65	E. PLANK	L, E. PLANK	
8:36m	2	Newton Buccs	3	6	2	79	S. LEEVER	W, S. LEEVER	None
09/25/02	1	Hyde Park Vitamen	0	5	2	54	B. DUGGLEBY	L, B. DUGGLEBY	
14:39m	1	Cleveland Naps	4	7	1	78	J. TAYLOR	W, J. TAYLOR	None
09/25/02	1	Turin Mountaineers	3	8	1	70	J. TANNEHILL	W, J. TANNEHILL	None
11:36m	1	Newton Buccs	1	7	1	59	R. WADDELL	L, R. WADDELL	





U-TCB903 - TCBA Origins 1902 MLB World Series - Game Summaries

5 Games Played

Date	No.	Team	R	H	E	G Sc	Starters	Decisions	Save
10/09/02	5	Cleveland Naps	6	12	2	70	W. MERCER	W, W. MERCER	None
19:48m	5	Turin Mountaineers	1	7	3	32	M. O'NEILL	L, M. O'NEILL	
Date	No.	Team	R	H	E	G Sc	Starters	Decisions	Save
10/08/02	4	Cleveland Naps	5	12	0	50	C. MATHEWSON	W, C. MATHEWSON	B. BERNHARD
20:20m	4	Turin Mountaineers	3	6	0	41	E. PLANK	L, E. PLANK	
Date	No.	Team	R	H	E	G Sc	Starters	Decisions	Save
10/07/02	3	Cleveland Naps	6	14	0	83	J. TAYLOR	W, J. TAYLOR	None
15:38m	3	Turin Mountaineers	0	3	1	43	J. TANNEHILL	L, J. TANNEHILL	
Date	No.	Team	R	H	E	G Sc	Starters	Decisions	Save
10/05/02	2	Turin Mountaineers	3	5	2	31	E. PLANK	L, E. PLANK	
21:16m	2	Cleveland Naps	6	11	2	71	B. BERNHARD	W, B. BERNHARD	None
Date	No.	Team	R	H	E	G Sc	Starters	Decisions	Save
10/04/02	1	Turin Mountaineers	6	11	0	73	J. TANNEHILL	W, J. TANNEHILL	None
19:30m	1	Cleveland Naps	3	4	2	48	J. TAYLOR	L, C. MATHEWSON	



Defending champion Turin wins the opener, but Cleveland takes the next four decisions for the World Series Championship.