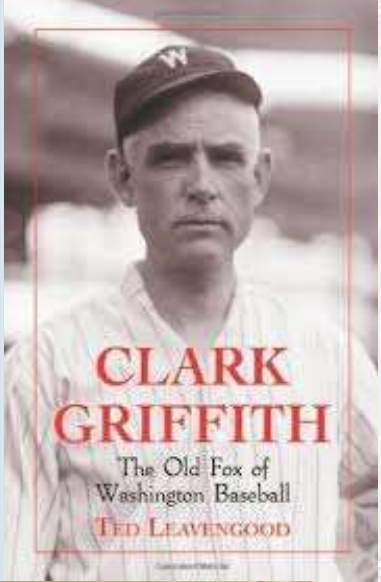


**Starting Lineup  
Opening Day for  
Hereford  
Highlanders**



11 Pitchers	Tm	Lg	W	L	PCT	SV	ERA	G	GS	CG	SHO	QS	IP	H	R	ER	HR	SO	BB
TAYLOR, R.	HH	TCBA	2	0	1.000	1	.00	3	0	0	0	0	3.0	1	0	0	0	0	1
GRIFFITH, C.	HH	TCBA	19	10	.655	0	2.37	30	30	20	3	20	258.2	221	95	68	4	89	34
MOORE, E.	HH	TCBA	21	11	.656	0	2.40	35	35	27	6	25	296.0	203	100	79	2	189	66
TERRY, J.	HH	TCBA	1	2	.333	1	2.60	11	0	0	0	0	17.1	16	6	5	0	5	7
GIBSON, N.	HH	TCBA	14	11	.560	0	2.68	30	27	15	0	17	218.0	195	98	65	0	121	88
WILLIS, V.	HH	TCBA	17	18	.486	1	2.94	41	39	25	2	24	324.2	291	136	106	5	149	85
RHOADS, B.	HH	TCBA	3	12	.200	1	4.53	24	15	8	0	4	139.0	167	79	70	2	78	57
EASON, M.	HH	TCBA	6	5	.545	2	4.94	18	6	4	1	2	71.0	87	57	39	4	14	30
KANE, H.	HH	TCBA	0	0	-	1	6.94	10	0	0	0	0	11.2	25	10	9	0	6	8
HYNES, P.	HH	TCBA	1	1	.500	1	7.01	9	2	2	0	0	25.2	39	24	20	1	11	13
REAGAN, R.	HH	TCBA	0	0	-	0	7.88	8	0	0	0	0	8.0	17	11	7	0	4	1
Hereford Highlanders			84	70	.545	8	3.07	219	154	101	12	92	1373.0	1262	616	468	18	666	390

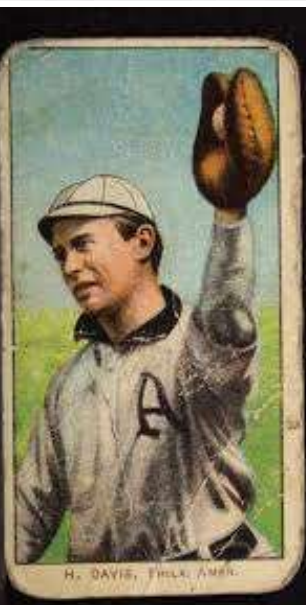
11 Pitchers	Tm	Lg	SUP/9	R/9	ERA	BF/9	BR/9	H/9	BB/9	SO/9	HR/9	ERPT	OBA	BF	BR	IBB	HB	WP	BK
TAYLOR, R.	HH	TCBA	.0	.00	.00	33.0	6.0	3.0	3.0	.0	.00	1.2	.100	11	2	0	0	0	0
GRIFFITH, C.	HH	TCBA	4.5	3.31	2.37	36.5	9.1	7.7	1.1	3.1	.14	34.0	.224	1048	262	1	8	7	0
MOORE, E.	HH	TCBA	5.0	3.04	2.40	35.4	8.3	6.2	2.0	5.7	.06	37.7	.189	1164	273	1	5	7	0
TERRY, J.	HH	TCBA	.0	3.12	2.60	37.4	10.9	8.3	2.6	2.6	.00	1.8	.254	72	21	2	0	0	0
GIBSON, N.	HH	TCBA	6.0	4.05	2.68	39.5	12.2	8.1	3.6	5.0	.00	21.0	.233	956	295	1	13	9	0
WILLIS, V.	HH	TCBA	4.4	3.77	2.94	37.3	10.8	8.1	2.3	4.1	.14	22.0	.239	1345	389	2	15	2	0
RHOADS, B.	HH	TCBA	2.7	5.12	4.53	40.8	14.8	10.8	3.7	5.1	.13	-15.2	.301	630	228	0	4	3	0
EASON, M.	HH	TCBA	1.9	7.23	4.94	42.6	15.3	11.0	3.8	1.8	.51	-11.0	.293	336	121	0	4	0	0
KANE, H.	HH	TCBA	.0	7.71	6.94	48.6	26.2	19.3	6.2	4.6	.00	-4.4	.463	63	34	0	1	0	0
HYNES, P.	HH	TCBA	2.8	8.42	7.01	43.8	18.2	13.7	4.6	3.9	.35	-9.9	.355	125	52	0	0	0	0
REAGAN, R.	HH	TCBA	.0	12.38	7.88	46.1	20.3	19.1	1.1	4.5	.00	-3.8	.425	41	18	0	0	0	0
Hereford Highlanders			4.4	4.04	3.07	38.0	11.1	8.3	2.5	4.4	.12	73.4	.241	5791	1695	7	50	28	0



Earl Moore

7 PM U-TCB904 TCBA Origins 1903 MLB TCBA Origins 1903 MLB Setz Division Hereford Highlanders

26 Players	Tm	Lg	AVG	G	AB	R	H	2B	3B	HR	TB	RBI	SO	BB	ASB	SB	CS	SBP	GDP
GIBSON, N.	HH	TCBA	.349	30	86	13	30	5	1	0	37	12	8	7	0	0	0	-	0
BURKETT, J.	HH	TCBA	.315	147	596	95	188	32	8	2	242	96	62	42	16	7	9	43.8	8
DAVIS, H.	HH	TCBA	.304	119	467	79	142	38	8	7	217	90	38	26	18	7	11	38.9	4
PICKERING, O.	HH	TCBA	.296	138	585	97	173	16	4	0	197	42	61	50	35	23	12	65.7	3
BAY, H.	HH	TCBA	.288	154	612	60	176	19	11	0	217	80	49	25	35	26	9	74.3	9
STRANG, S.	HH	TCBA	.277	151	573	120	159	25	5	0	194	55	65	81	44	35	9	79.5	9
BARRY, S.	HH	TCBA	.268	99	306	36	82	20	4	0	110	44	28	24	10	5	5	50.0	4
MORAN, P.	HH	TCBA	.265	104	389	50	103	29	5	6	160	85	48	32	5	3	2	60.0	7
O'CONNOR, J.	HH	TCBA	.241	40	137	14	33	4	1	0	39	19	10	4	2	0	2	.0	4
PHELPS, E.	HH	TCBA	.237	44	97	6	23	1	0	0	24	10	8	7	1	1	0	100.0	1
DUNN, J.	HH	TCBA	.233	98	344	38	80	20	1	0	102	30	51	19	13	11	2	84.6	4
Lyon, D.	HH	TCBA	.221	42	77	3	17	3	0	2	26	7	17	4	0	0	0	-	1
MCCORMICK, B.	HH	TCBA	.196	139	510	44	100	16	1	0	118	48	71	29	7	6	1	85.7	14
GRIFFITH, C.	HH	TCBA	.190	30	84	10	16	9	0	0	25	7	14	16	3	1	2	33.3	3
GOCHNAUER, J.	HH	TCBA	.175	59	189	25	33	6	1	0	41	15	27	31	4	2	2	50.0	2
WILLIS, V.	HH	TCBA	.134	41	119	7	16	3	0	0	19	4	22	8	0	0	0	-	2
RHOADS, B.	HH	TCBA	.106	24	47	3	5	0	0	0	5	0	11	0	0	0	0	-	0
MOORE, E.	HH	TCBA	.106	35	104	9	11	0	0	0	11	5	13	8	1	1	0	100.0	4
EASON, M.	HH	TCBA	.091	18	22	0	2	0	0	0	2	0	4	0	0	0	0	-	1
LOBERT, H.	HH	TCBA	.000	11	12	0	0	0	0	0	0	0	2	0	0	0	0	-	0
HYNES, P.	HH	TCBA	.000	9	7	0	0	0	0	0	0	0	0	0	0	0	0	-	0
HILLEY, E.	HH	TCBA	.000	3	2	0	0	0	0	0	0	0	2	1	0	0	0	-	0
TERRY, J.	HH	TCBA	.000	11	2	0	0	0	0	0	0	0	0	0	0	0	0	-	0
KANE, H.	HH	TCBA	.000	10	1	0	0	0	0	0	0	0	0	0	0	0	0	-	0
REAGAN, R.	HH	TCBA	-	8	0	0	0	0	0	0	0	0	0	0	0	0	0	-	0
TAYLOR, R.	HH	TCBA	-	3	0	0	0	0	0	0	0	0	0	0	0	0	0	-	0
Hereford Highlanders			.259	1567	5368	709	1389	246	50	17	1786	649	611	414	194	128	66	66.0	80



7:30 PM No Selection Made



**MALLARDS**

# Mexicali Mallards Draft Picks



1-Lee Tannehill 2-Lew Moren 3-Ambrose Puttman 4-Gus Thompson 5-Connie McGeehan 6-Bill Hanlon 7-John Walsh





- 1-Frank Chance, 1B**
- 2-Patsy Dougherty, RF**
- 3-Duffy Cooley, CF**
- 4-Chick Stahl, LF**
- 5-Jimmy Williams, 2B**
- 6-Jimmy Burke, 3B**
- 7-Ossee Schreckengost C**
- 8-Monte Cross SS**
- 9-Noodles Hahn, P**

**Starting Lineup Opening Day for the Mexicali Mallards**

Starting Lineup Opening Day for the Mexicali Mallards



27 Players	Tm	Lg	AVG	G	AB	R	H	2B	3B	HR	TB	RBI	SO	BB	ASB	SB	CS	SBP	GDP
CHANCE, F.	ME	TCBA	.367	130	501	138	184	45	8	1	248	60	45	71	48	34	14	70.8	5
DOUGHERTY, P.	ME	TCBA	.336	143	581	108	195	24	15	6	267	80	49	32	51	39	12	76.5	4
COOLEY, D.	ME	TCBA	.325	146	603	102	196	28	12	0	248	100	48	45	32	26	6	81.3	5
STAHL, C.	ME	TCBA	.297	88	323	53	96	19	3	0	121	57	24	19	10	8	2	80.0	4
BURKE, J.	ME	TCBA	.284	126	447	64	127	6	5	0	143	71	28	25	33	26	7	78.8	4
Keefer, A.	ME	TCBA	.275	65	218	15	60	10	2	2	80	27	47	14	0	0	0	-	4
CROSS, M.	ME	TCBA	.273	145	510	74	139	25	2	5	183	62	86	49	28	21	7	75.0	7
WILLIAMS, J.	ME	TCBA	.271	137	506	73	137	23	9	3	187	87	46	49	15	10	5	66.7	7
SCHRECKENGOST, O.	ME	TCBA	.269	83	271	29	73	12	2	2	95	44	29	10	0	0	0	-	2
HALLMAN, B.	ME	TCBA	.261	67	180	27	47	5	4	1	63	23	27	22	11	8	3	72.7	4
WEAVER, A.	ME	TCBA	.258	40	62	7	16	0	2	0	20	8	5	6	0	0	0	-	1
KITTRIDGE, M.	ME	TCBA	.256	98	316	29	81	9	0	0	90	35	35	19	0	0	0	-	7
WALSH, J.	ME	TCBA	.250	58	20	3	5	0	0	0	5	4	3	0	0	0	0	-	0
DEXTER, C.	ME	TCBA	.241	67	174	28	42	9	1	3	62	24	27	32	15	12	3	80.0	3
WILLIAMS, P.	ME	TCBA	.217	18	23	4	5	0	0	0	5	0	4	0	0	0	0	-	1
TANNEHILL, L.	ME	TCBA	.212	78	226	27	48	7	3	2	67	27	36	17	2	0	2	.0	7
HAHN, N.	ME	TCBA	.203	40	123	18	25	9	0	0	34	16	22	13	3	1	2	33.3	2
FRASER, C.	ME	TCBA	.158	26	76	18	12	1	1	0	15	5	10	11	3	2	1	66.7	2
WINTER, G.	ME	TCBA	.154	26	78	8	12	2	0	0	14	2	12	4	0	0	0	-	2
HANLON, B.	ME	TCBA	.111	56	18	4	2	0	0	0	2	2	2	2	0	0	0	-	2
THOMPSON, G.	ME	TCBA	.100	21	10	1	1	0	0	0	1	2	1	1	0	0	0	-	0
REIDY, B.	ME	TCBA	.091	26	66	4	6	1	0	0	7	8	10	4	0	0	0	-	0
MCFARLAND, C.	ME	TCBA	.069	33	87	6	6	1	0	0	7	4	11	8	0	0	0	-	5
MOREN, L.	ME	TCBA	.000	12	5	0	0	0	0	0	0	0	0	0	0	0	0	-	0
PUTTMANN, A.	ME	TCBA	.000	12	5	0	0	0	0	0	0	2	0	0	0	0	0	-	0
MC GEEHAN, C.	ME	TCBA	.000	12	2	0	0	0	0	0	0	1	0	0	0	0	0	-	0
MCLAUGHLIN, W.	ME	TCBA	.000	4	0	0	0	0	0	0	0	0	0	0	0	0	0	-	0
Mexicali Mallards			.279	1757	5431	840	1515	236	69	25	1964	748	610	453	251	187	64	74.5	78

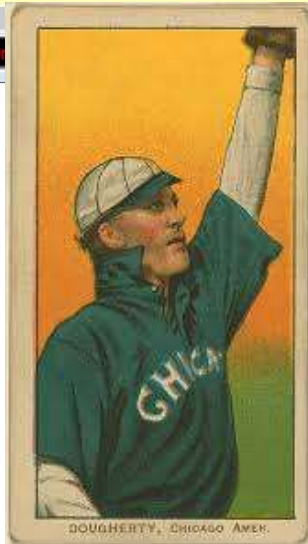
StatMaster  
Select Reports Multi Options Window Help

U-TCB904 - Mexicali Mallards - Player Pitching

12 Pitchers	Tm	Lg	W	L	PCT	SV	ERA	G	GS	CG	SHO	QS	IP	H	R	ER	HR	SO	BB
MC GEEHAN, C.	ME	TCBA	2	1	.667	1	1.38	12	0	0	0	0	13.0	14	4	2	0	6	2
TANNEHILL, L.	ME	TCBA	0	0	-	0	2.29	7	0	0	0	0	19.2	18	7	5	0	3	4
HAHN, N.	ME	TCBA	29	8	.784	0	2.44	40	39	29	3	24	339.1	300	115	92	7	173	46
MCFARLAND, C.	ME	TCBA	13	16	.448	2	3.06	33	31	21	3	16	247.1	243	104	84	1	79	46
WINTER, G.	ME	TCBA	13	8	.619	1	3.10	26	25	17	3	13	209.1	201	101	72	5	62	56
FRASER, C.	ME	TCBA	11	8	.579	0	3.17	26	25	17	1	11	210.1	221	91	74	5	122	64
PUTTMANN, A.	ME	TCBA	4	2	.667	1	3.38	12	1	1	0	1	21.1	15	8	8	0	8	7
REIDY, B.	ME	TCBA	14	7	.667	0	3.45	26	23	17	2	14	182.2	211	80	70	0	49	32
MOREN, L.	ME	TCBA	1	1	.500	0	4.66	12	1	1	1	1	19.1	29	15	10	0	9	8
THOMPSON, G.	ME	TCBA	5	3	.625	1	4.89	21	3	1	1	1	49.2	61	30	27	0	28	11
WILLIAMS, P.	ME	TCBA	3	5	.375	0	5.83	18	6	4	0	0	71.0	78	55	46	5	21	31
MCLAUGHLIN, W.	ME	TCBA	0	0	-	1	10.80	4	0	0	0	0	1.2	3	2	2	0	0	0
Mexicali Mallards			95	59	.617	7	3.20	237	154	108	14	81	1384.2	1394	612	492	23	560	307

12 Pitchers	Tm	Lg	SUP/9	R/9	ERA	BF/9	BR/9	H/9	BB/9	SO/9	HR/9	ERPT	OBA	BF	BR	IBB	HB	WP	BK
MC GEEHAN, C.	ME	TCBA	.0	2.77	1.38	36.0	11.1	9.7	1.4	4.2	.00	3.1	.286	52	16	0	0	0	0
TANNEHILL, L.	ME	TCBA	.0	3.20	2.29	35.2	10.1	8.2	1.8	1.4	.00	2.8	.254	77	22	0	0	0	0
HAHN, N.	ME	TCBA	5.6	3.05	2.44	36.0	9.6	8.0	1.2	4.6	.19	41.8	.236	1359	363	0	17	6	0
MCFARLAND, C.	ME	TCBA	5.0	3.78	3.06	37.6	10.6	8.8	1.6	2.9	.04	13.5	.253	1032	291	3	5	6	1
WINTER, G.	ME	TCBA	5.0	4.34	3.10	38.0	11.4	8.6	2.4	2.7	.21	10.5	.250	884	264	0	7	0	0
FRASER, C.	ME	TCBA	5.4	3.89	3.17	39.0	12.3	9.5	2.5	5.2	.21	8.9	.271	912	288	5	8	5	0
PUTTMANN, A.	ME	TCBA	.4	3.38	3.38	36.7	9.7	6.3	3.0	3.4	.00	.4	.197	87	23	0	1	1	0
REIDY, B.	ME	TCBA	6.6	3.94	3.45	37.9	12.1	10.4	1.5	2.4	.00	2.0	.290	770	245	1	3	7	0
MOREN, L.	ME	TCBA	2.3	6.98	4.66	44.2	17.2	13.5	3.7	4.2	.00	-2.4	.333	95	37	0	0	1	0
THOMPSON, G.	ME	TCBA	.4	5.44	4.89	38.6	13.0	11.1	1.6	5.1	.00	-7.4	.316	213	72	2	2	0	0
WILLIAMS, P.	ME	TCBA	2.2	6.97	5.83	40.1	13.9	9.9	3.7	2.7	.63	-18.0	.283	316	110	2	3	1	0
MCLAUGHLIN, W.	ME	TCBA	.0	10.80	10.80	43.2	16.2	16.2	.0	.0	.00	-1.3	.375	8	3	0	0	0	0
Mexicali Mallards			4.9	3.98	3.20	37.7	11.3	9.1	1.9	3.6	.15	54.0	.261	5805	1734	13	46	27	1



Detroit Tigers CF Duff Cooley, South Side Park, Chicago, 1905.  
 - "Dick" was Detroit's starting center fielder in 1905 - the 30-year old's final major league season.  
 - Played his final MLB game on August 26.  
 - His replacement? A scrawny, 19-year old Georgian.  
 @tigers



# MOUNTAINEERS



**TURIN**





1-Solly Hofman 2-Frank Roth 3-Traded 4-Benny Bowcock 5a-Bill Pounds 5-Ed Pinnance 6-Jack Zalusky 7-Jim Fairbank



traded<sup>ny</sup>



# Turin Mountaineers Draft Picks



**TURIN MOUNTAINEERS OPENING DAY LINEUP**

- 1-Danny Green, RF**
- 2-Bill Bradley, 3B**
- 3-Wid Conroy, SS**
- 4-Emmet Heidrick, CF**
- 5-John Farrell, 2B**
- 6-Jack McCarthy, LF**
- 7-Candy LaChance, 1B**
- 8-Jack Slattery, C**
- 9-Eddie Plank, P**

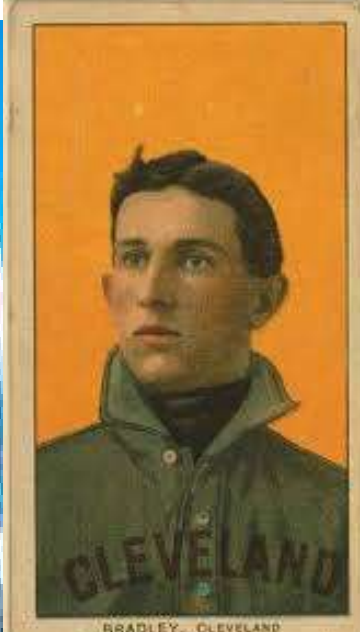
# TURIN MOUNTAINEERS OPENING DAY STARTING LINEUP



25 Players	Tm	Lg	AVG	G	AB	R	H	2B	3B	HR	TB	RBI	SO	BB	ASB	SB	CS	SBP	GDP
BOWCOCK, B.	TU	TCBA	.351	21	57	15	20	3	0	2	29	6	5	7	0	0	0	-	1
GREEN, D.	TU	TCBA	.347	144	600	133	208	35	11	6	283	60	56	61	36	28	8	77.8	1
BRADLEY, B.	TU	TCBA	.312	149	613	96	191	49	17	9	301	106	51	45	24	17	7	70.8	13
HEIDRICK, E.	TU	TCBA	.303	134	488	73	148	21	11	0	191	78	33	47	29	20	9	69.0	4
MCCARTHY, J.	TU	TCBA	.275	149	538	76	148	31	6	0	191	72	48	31	28	21	7	75.0	10
MCGUIRE, D.	TU	TCBA	.264	102	258	30	68	15	0	0	83	32	33	39	2	1	1	50.0	2
LACHANCE, C.	TU	TCBA	.263	154	571	74	150	30	7	0	194	82	62	28	11	11	0	100.0	6
LOVETT, J.	TU	TCBA	.250	12	20	2	5	0	0	0	5	1	2	0	0	0	0	-	0
FAIRBANK, J.	TU	TCBA	.250	10	4	0	1	0	0	0	1	1	0	0	0	0	0	-	0
CONROY, W.	TU	TCBA	.244	143	557	79	136	26	13	0	188	63	64	45	39	32	7	82.1	5
LEE, W.	TU	TCBA	.243	87	173	25	42	9	1	0	53	21	36	22	3	1	2	33.3	3
FARRELL, J.	TU	TCBA	.227	148	559	68	127	25	3	0	158	71	48	47	21	18	3	85.7	10
POUNDS, B.	TU	TCBA	.226	31	31	4	7	0	0	0	7	3	4	0	0	0	0	-	0
FOHL, L.	TU	TCBA	.222	8	18	1	4	2	1	0	8	2	1	0	0	0	0	-	0
SLATTERY, J.	TU	TCBA	.218	91	239	24	52	2	3	0	60	22	38	8	1	1	0	100.0	8
TANNEHILL, J.	TU	TCBA	.213	44	127	20	27	8	3	0	41	5	21	11	2	0	2	.0	1
ZALUSKY, J.	TU	TCBA	.211	9	19	2	4	0	0	0	4	1	3	4	0	0	0	-	1
Pio, P.	TU	TCBA	.200	64	145	8	29	4	1	4	47	24	37	12	0	0	0	-	6
PLANK, E.	TU	TCBA	.197	49	147	13	29	7	2	2	46	16	22	2	2	0	2	.0	1
O'NEILL, M.	TU	TCBA	.167	29	78	11	13	0	0	0	13	4	12	6	2	0	2	.0	1
HEARNE, H.	TU	TCBA	.143	31	70	6	10	8	1	0	20	9	6	3	4	3	1	75.0	1
KISINGER, R.	TU	TCBA	.140	31	50	5	7	0	0	0	7	8	7	3	1	0	1	.0	2
MCLEAN, L.	TU	TCBA	.100	10	10	0	1	0	0	0	1	0	3	2	0	0	0	-	0
HOFMAN, S.	TU	TCBA	.000	14	23	0	0	0	0	0	0	0	2	0	0	0	0	-	0
PINNANCE, E.	TU	TCBA	.000	9	3	0	0	0	0	0	0	0	0	0	0	0	0	-	0
Turin Mountaineers			.264	1673	5398	765	1427	275	80	23	1931	687	594	423	205	153	52	74.6	76



GREEN, Fielder, Chicago, A



BRADLEY, CLEVELAND

4:09 PM U-TCB904 | TCBA Origins 1903 MLB | TCBA Origins 1903 MLB | Seitz Division | Turin Mountaineers

10 Pitchers	Tm	Lg	W	L	PCT	SV	ERA	G	GS	CG	SHO	QS	IP	H	R	ER	HR	SO	BB
PINNANCE, E.	TU	TCBA	2	0	1.000	2	.00	9	1	1	0	1	17.2	10	1	0	0	6	6
PLANK, E.	TU	TCBA	23	18	.561	1	2.58	48	47	22	2	30	370.1	302	143	106	7	174	94
LEE, W.	TU	TCBA	9	14	.391	6	3.38	46	17	14	0	8	186.2	184	89	70	2	88	69
TANNEHILL, J.	TU	TCBA	21	16	.568	0	3.45	44	38	21	4	21	300.0	325	139	115	2	154	53
KISINGER, R.	TU	TCBA	10	8	.556	3	3.49	31	17	8	0	8	147.0	144	80	57	0	54	43
POUNDS, B.	TU	TCBA	2	2	.500	2	3.83	31	0	0	0	0	51.2	76	35	22	4	25	14
LOVETT, J.	TU	TCBA	1	3	.250	1	4.07	11	5	2	0	3	48.2	57	30	22	0	28	24
O'NEILL, M.	TU	TCBA	11	10	.524	0	4.84	28	23	15	1	5	199.0	262	149	107	5	86	72
Pio, P.	TU	TCBA	3	1	.750	0	5.02	12	6	2	1	2	43.0	59	27	24	0	12	13
FAIRBANK, J.	TU	TCBA	0	0	-	0	8.20	10	0	0	0	0	18.2	24	17	17	1	10	14
Turin Mountaineers			82	72	.532	15	3.51	270	154	85	8	78	1382.2	1443	710	540	21	637	402

10 Pitchers	Tm	Lg	SUP/9	R/9	ERA	BF/9	BR/9	H/9	BB/9	SO/9	HR/9	ERPT	OBA	BF	BR	IBB	HB	WP	BK
PINNANCE, E.	TU	TCBA	1.5	.51	.00	35.2	7.1	5.1	2.0	3.1	.00	7.0	.159	69	14	2	0	0	0
PLANK, E.	TU	TCBA	4.9	3.48	2.58	37.0	9.6	7.3	2.0	4.2	.17	40.0	.218	1522	395	12	11	8	0
LEE, W.	TU	TCBA	2.8	4.29	3.38	39.0	12.7	8.9	3.2	4.2	.10	3.6	.262	809	264	3	14	4	0
TANNEHILL, J.	TU	TCBA	5.0	4.17	3.45	38.0	11.6	9.8	1.5	4.6	.06	3.3	.276	1268	386	4	12	5	0
KISINGER, R.	TU	TCBA	4.4	4.90	3.49	38.8	11.9	8.8	2.5	3.3	.00	1.0	.253	634	194	2	9	0	0
POUNDS, B.	TU	TCBA	.0	6.10	3.83	42.7	15.3	13.2	2.1	4.4	.70	-1.6	.330	245	88	2	0	0	0
LOVETT, J.	TU	TCBA	2.6	5.55	4.07	41.2	14.6	10.5	4.1	5.2	.00	-2.8	.297	223	79	2	0	1	0
O'NEILL, M.	TU	TCBA	5.4	6.74	4.84	42.0	15.0	11.8	3.0	3.9	.23	-28.5	.314	928	332	5	3	0	0
Pio, P.	TU	TCBA	4.6	5.65	5.02	40.8	15.5	12.3	2.5	2.5	.00	-7.0	.343	195	74	1	3	0	0
FAIRBANK, J.	TU	TCBA	.0	8.20	8.20	44.4	18.3	11.6	6.8	4.8	.48	-9.6	.316	92	38	0	0	1	0
Turin Mountaineers			4.3	4.62	3.51	39.0	12.1	9.4	2.4	4.1	.14	5.2	.267	5985	1864	33	52	19	0



EDDIE PLANK



TANNEHILL, WASHINGTON





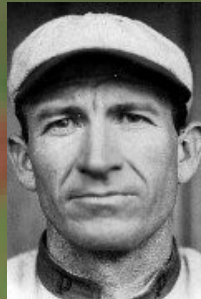
1-Patsy Flaherty 2-Henry Schmidt 3-Fred Abbott 4-Lee DeMontreville  
5-Dan Kerwin 6-Reddy Grey 7-Harry Wood

## **Newton Buccs Draft Picks**



**NEWTON BUCC STARTING LINEUP OPENING DAY**

**1-Joe Tinker, SS    2-Sam Mertes, RF    3-Ginger Beaumont, CF    4-Dan McGann, 1B  
5-Ed Gremminger, 3B    7-Hobe Ferris, 2B    7-Fritz Buelow, C    8-Dave Fultz, LF    9-Sam Leever, P**



**NEWTON BUCC STARTING  
LINEUP OPENING DAY**



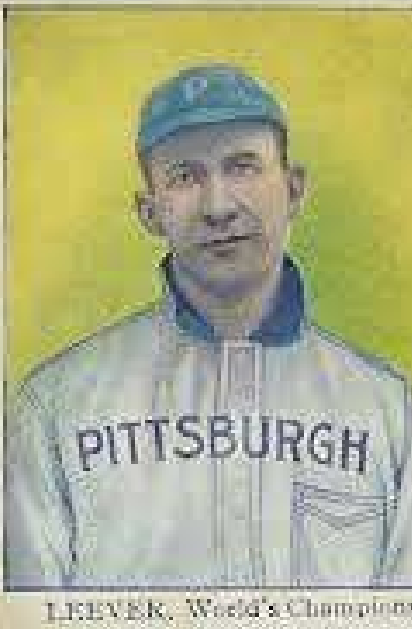
U-TCB904 - Newton Buccs - Player Pitching

8 Pitchers	Tm	Lg	W	L	PCT	SV	ERA	G	GS	CG	SHO	QS	IP	H	R	ER	HR	SO	BB
LEEVEE, S.	NB	TCBA	30	11	.732	0	1.74	41	41	30	10	29	345.2	231	81	67	1	106	55
WALKER, E.	NB	TCBA	2	0	1.000	2	2.41	21	0	0	0	0	18.2	17	9	5	1	9	12
WADDELL, R.	NB	TCBA	21	14	.600	1	2.44	43	39	27	5	23	335.2	256	119	91	4	279	104
EVANS, R.	NB	TCBA	3	5	.375	1	3.31	34	7	3	1	5	92.1	100	44	34	2	51	41
FLAHERTY, P.	NB	TCBA	15	17	.469	0	3.46	36	31	22	2	13	273.1	310	137	105	4	92	79
Beeman, J.	NB	TCBA	3	1	.750	2	3.77	18	0	0	0	0	31.0	50	16	13	0	12	2
SCHMIDT, H.	NB	TCBA	16	13	.552	0	3.81	36	36	18	2	15	297.2	294	155	126	4	109	122
MAGOON, G.	NB	TCBA	1	2	.333	2	6.14	16	0	0	0	0	22.0	29	19	15	0	7	6
Newton Buccs			91	63	.591	8	2.90	245	154	100	20	85	1416.1	1287	580	456	16	665	421

8 Pitchers	Tm	Lg	SUP/9	R/9	ERA	BF/9	BR/9	H/9	BB/9	SO/9	HR/9	ERPT	OBA	BF	BR	IBB	HB	WP	BK
LEEVEE, S.	NB	TCBA	5.3	2.11	1.74	34.6	7.6	6.0	1.4	2.8	.03	69.3	.186	1327	290	1	5	14	0
WALKER, E.	NB	TCBA	.0	4.34	2.41	42.4	14.0	8.2	5.8	4.3	.48	2.4	.233	88	29	0	0	0	0
WADDELL, R.	NB	TCBA	3.9	3.19	2.44	36.9	9.9	6.9	2.7	7.5	.11	41.4	.208	1376	368	4	12	10	0
EVANS, R.	NB	TCBA	1.7	4.29	3.31	39.8	13.5	9.7	3.5	5.0	.19	2.4	.279	408	139	5	3	1	0
FLAHERTY, P.	NB	TCBA	5.0	4.51	3.46	40.0	12.9	10.2	2.4	3.0	.13	2.8	.283	1214	392	7	10	2	0
Beeman, J.	NB	TCBA	.0	4.65	3.77	40.1	14.8	14.5	.3	3.5	.00	-.8	.373	138	51	1	0	0	1
SCHMIDT, H.	NB	TCBA	5.1	4.69	3.81	39.8	12.8	8.9	3.4	3.3	.12	-8.6	.256	1317	425	8	17	5	0
MAGOON, G.	NB	TCBA	.0	7.77	6.14	41.7	14.3	11.9	2.0	2.9	.00	-6.3	.322	102	35	1	1	0	0
Newton Buccs			4.4	3.69	2.90	37.9	11.0	8.2	2.5	4.2	.10	102.5	.239	5970	1729	27	48	32	1

4:47 PM No Selections Made

20 Players	Tm	Lg	AVG	G	AB	R	H	2B	3B	HR	TB	RBI	SO	BB	ASB	SB	CS	SBP	GDP
BEAUMONT, G.	NB	TCBA	.325	154	630	109	205	30	5	7	266	109	48	53	35	28	7	80.0	10
MCGANN, D.	NB	TCBA	.313	137	536	74	168	36	6	5	231	96	41	26	50	39	11	78.0	8
GREMMINGER, E.	NB	TCBA	.308	144	587	97	181	30	16	9	270	105	51	30	18	11	7	61.1	5
TINKER, J.	NB	TCBA	.307	131	514	96	158	26	7	0	198	42	45	63	45	33	12	73.3	1
MERTES, S.	NB	TCBA	.277	153	611	118	169	46	13	3	250	87	60	63	67	51	16	76.1	6
FERRIS, H.	NB	TCBA	.246	150	582	57	143	26	4	7	198	72	60	35	15	11	4	73.3	7
MAGOON, G.	NB	TCBA	.238	54	122	17	29	4	0	0	33	19	22	10	1	0	1	.0	3
BUELOW, F.	NB	TCBA	.234	85	282	24	66	3	8	2	91	33	32	14	3	2	1	66.7	9
ABBOTT, F.	NB	TCBA	.225	84	293	27	66	12	4	0	86	29	47	15	9	7	2	77.8	7
LEEVEE, S.	NB	TCBA	.213	41	136	13	29	0	1	0	31	10	20	2	0	0	0	-	0
FULTZ, D.	NB	TCBA	.208	145	509	60	106	20	3	0	132	37	65	42	36	20	16	55.6	8
DEMONTREVILLE, L.	NB	TCBA	.197	47	61	14	12	2	0	0	14	4	6	12	1	1	0	100.0	1
Beeman, J.	NB	TCBA	.183	45	82	12	15	4	0	0	19	5	17	6	0	0	0	-	5
HALLMAN, B.	NB	TCBA	.176	35	74	4	13	4	0	0	17	3	12	8	0	0	0	-	1
THONEY, J.	NB	TCBA	.163	43	98	3	16	1	0	0	17	12	19	3	7	3	4	42.9	1
EVANS, R.	NB	TCBA	.138	34	29	1	4	0	0	0	4	1	8	2	0	0	0	-	0
WADDELL, R.	NB	TCBA	.134	43	119	7	16	2	0	0	18	5	14	3	0	0	0	-	4
FLAHERTY, P.	NB	TCBA	.130	36	100	14	13	10	0	0	23	6	12	6	3	3	0	100.0	3
SCHMIDT, H.	NB	TCBA	.123	36	106	12	13	0	1	0	15	7	26	15	7	3	4	42.9	0
WALKER, E.	NB	TCBA	.000	21	3	0	0	0	0	0	0	0	0	0	0	0	0	-	0
Newton Buccs			.260	1618	5474	759	1422	256	68	33	1913	682	605	408	297	212	85	71.4	79





**NAPS**



1-Jack Pfiester  
5-Joe Marshall

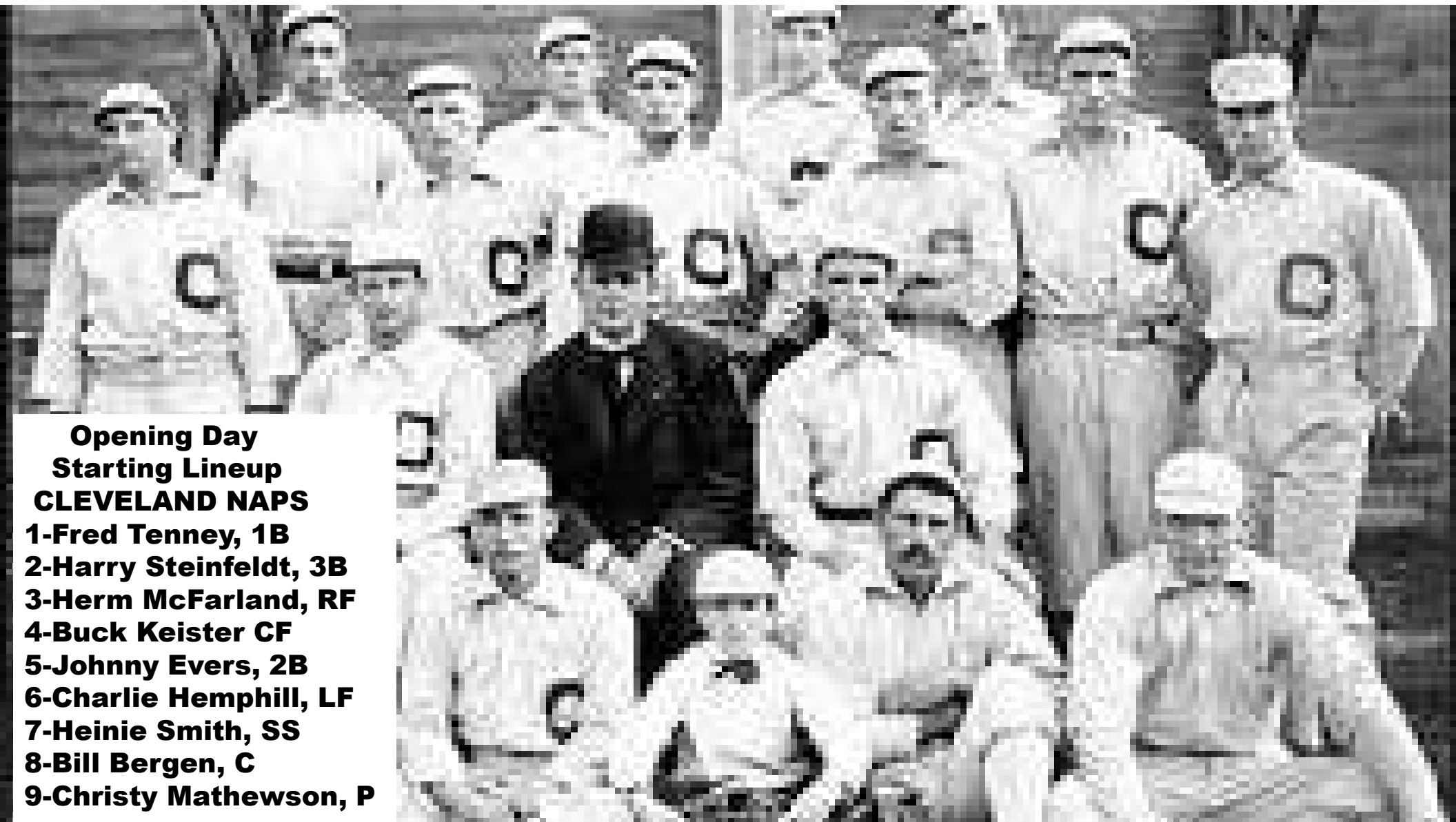
2-Judge McCredie  
6-Larry Milton

3-Pat Carney  
7-Ed Hug

4-Hugh Hill  
8-PASS



# Cleveland Naps Draft Picks



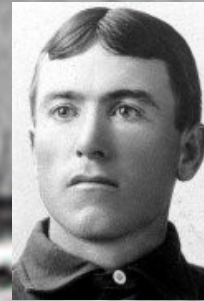
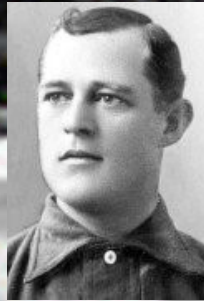
**Opening Day**

**Starting Lineup**

**CLEVELAND NAPS**

- 1-Fred Tenney, 1B**
- 2-Harry Steinfeldt, 3B**
- 3-Herm McFarland, RF**
- 4-Buck Keister CF**
- 5-Johnny Evers, 2B**
- 6-Charlie Hemphill, LF**
- 7-Heinie Smith, SS**
- 8-Bill Bergen, C**
- 9-Christy Mathewson, P**

**Opening Day Starting Lineup  
CLEVELAND NAPS**



23 Players	Tm	Lg	AVG	G	AB	R	H	2B	3B	HR	TB	RBI	SO	BB	ASB	SB	CS	SBP	GDP
MCCREDIE, J.	CL	TCBA	.339	78	274	46	93	9	0	0	102	48	26	34	13	10	3	76.9	3
STEINFELDT, H.	CL	TCBA	.325	130	492	96	160	44	17	4	250	90	41	57	5	4	1	80.0	5
KEISTER, B.	CL	TCBA	.323	108	433	49	140	35	2	3	188	83	28	12	14	7	7	50.0	6
TENNEY, F.	CL	TCBA	.311	135	527	119	164	27	2	8	219	66	47	72	27	21	6	77.8	0
EVERS, J.	CL	TCBA	.310	136	504	80	156	31	8	0	203	85	49	28	33	23	10	69.7	6
MCFARLAND, H.	CL	TCBA	.264	107	409	68	108	20	7	10	172	64	51	42	19	14	5	73.7	7
HEMPHILL, C.	CL	TCBA	.244	105	397	48	97	4	1	5	118	43	61	18	22	16	6	72.7	2
Hobbs, R.	CL	TCBA	.238	79	231	25	55	8	2	1	70	21	42	18	0	0	0	-	12
LONG, H.	CL	TCBA	.236	65	178	22	42	8	0	0	50	22	18	10	5	4	1	80.0	6
BERNHARD, B.	CL	TCBA	.235	31	68	6	16	1	0	0	17	6	9	4	0	0	0	-	0
CARNEY, P.	CL	TCBA	.234	103	350	45	82	15	3	0	103	41	46	26	12	6	6	50.0	6
SMITH, H.	CL	TCBA	.229	143	520	64	119	23	3	0	148	59	71	33	18	15	3	83.3	7
BERGEN, B.	CL	TCBA	.203	140	493	47	100	10	2	0	114	40	61	20	2	0	2	.0	10
TAYLOR, J.	CL	TCBA	.200	43	125	18	25	4	2	0	33	14	26	13	2	1	1	50.0	1
MATHEWSON, C.	CL	TCBA	.191	46	131	18	25	1	0	1	29	11	17	10	0	0	0	-	2
WRIGHT, C.	CL	TCBA	.150	23	40	7	6	1	2	0	11	2	9	4	0	0	0	-	1
MARSHALL, J.	CL	TCBA	.136	52	22	2	3	0	2	0	7	6	3	1	0	0	0	-	0
HILL, H.	CL	TCBA	.091	20	33	2	3	0	0	0	3	0	9	1	0	0	0	-	1
KAHOE, M.	CL	TCBA	.084	45	83	7	7	1	1	0	10	5	17	6	1	0	1	.0	3
PFIESTER, J.	CL	TCBA	.077	20	13	0	1	0	0	0	1	1	1	0	0	0	0	-	1
GRAHAM, P.	CL	TCBA	.000	19	7	0	0	0	0	0	0	0	2	0	0	0	0	-	0
HUG, E.	CL	TCBA	.000	2	2	0	0	0	0	0	0	0	1	0	0	0	0	-	0
MILTON, L.	CL	TCBA	-	5	0	1	0	0	0	0	0	0	0	0	0	0	0	-	0
Cleveland Naps			.263	1635	5332	770	1402	242	54	32	1848	707	635	409	173	121	52	69.9	79

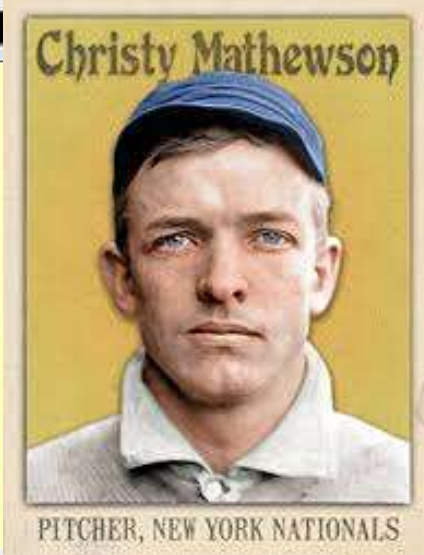


Steinfeldt

5:08 PM U-TCB904 TCBA Origins 1903 MLB TCBA Origins 1903 MLB McCorkindale Division Cleveland Naps

9 Pitchers	Tm	Lg	W	L	PCT	SV	ERA	G	GS	CG	SHO	QS	IP	H	R	ER	HR	SO	BB
MATHEWSON, C.	CL	TCBA	28	13	.683	1	1.78	46	45	34	7	27	380.0	291	111	75	3	321	65
BERNHARD, B.	CL	TCBA	13	15	.464	2	2.50	31	24	17	4	14	205.1	183	75	57	2	56	33
TAYLOR, J.	CL	TCBA	27	12	.692	0	2.58	43	42	32	8	26	352.2	287	130	101	5	104	72
CARNEY, P.	CL	TCBA	5	5	.500	0	3.39	13	9	8	0	3	82.1	94	44	31	1	39	16
Hobbs, R.	CL	TCBA	6	9	.400	0	5.32	20	15	10	0	4	137.0	201	115	81	2	54	50
PFIESTER, J.	CL	TCBA	1	4	.200	0	6.46	20	5	2	0	1	54.1	84	64	39	1	55	31
WRIGHT, C.	CL	TCBA	4	7	.364	0	7.30	23	12	5	0	0	114.2	185	114	93	3	74	58
GRAHAM, P.	CL	TCBA	1	1	.500	0	7.32	19	2	1	0	0	39.1	70	41	32	1	32	19
MILTON, L.	CL	TCBA	1	2	.333	1	7.50	4	0	0	0	0	6.0	7	7	5	0	2	1
Cleveland Naps			86	68	.558	4	3.37	219	154	109	19	75	1371.2	1402	701	514	18	737	345

9 Pitchers	Tm	Lg	SUP/9	R/9	ERA	BF/9	BR/9	H/9	BB/9	SO/9	HR/9	ERPT	OBA	BF	BR	IBB	HB	WP	BK
MATHEWSON, C.	CL	TCBA	5.0	2.63	1.78	36.1	8.8	6.9	1.5	7.6	.07	74.8	.206	1524	373	2	19	10	0
BERNHARD, B.	CL	TCBA	3.8	3.29	2.50	36.0	9.4	8.0	1.4	2.5	.09	24.0	.240	821	214	2	0	3	0
TAYLOR, J.	CL	TCBA	5.4	3.32	2.58	36.9	9.6	7.3	1.8	2.7	.13	38.1	.216	1445	377	1	19	1	0
CARNEY, P.	CL	TCBA	4.6	4.81	3.39	38.7	12.2	10.3	1.7	4.3	.11	1.5	.285	354	112	0	2	2	0
Hobbs, R.	CL	TCBA	4.4	7.55	5.32	43.4	16.8	13.2	3.2	3.5	.13	-27.0	.337	661	256	1	6	0	0
PFIESTER, J.	CL	TCBA	1.2	10.60	6.46	47.2	19.5	13.9	5.1	9.1	.17	-17.6	.339	285	118	0	3	0	0
WRIGHT, C.	CL	TCBA	5.4	8.95	7.30	46.1	19.8	14.5	4.6	5.8	.24	-47.8	.369	587	252	0	9	3	0
GRAHAM, P.	CL	TCBA	1.6	9.38	7.32	48.5	21.5	16.0	4.3	7.3	.23	-16.5	.385	212	94	0	5	0	0
MILTON, L.	CL	TCBA	.0	10.50	7.50	39.0	13.5	10.5	1.5	3.0	.00	-2.6	.350	26	9	0	1	0	0
Cleveland Naps			4.6	4.60	3.37	38.8	11.8	9.2	2.2	4.8	.12	26.9	.261	5915	1805	6	64	19	0



# FINAL STANDINGS

	W	L	PCT	GB
<b>TCBA Origins 1903 MLB</b>				
<b>Mahley Division</b>				
Long Island Islanders	108	44	.711	-
South Starrucca Ainspans	94	59	.614	14.5
Hyde Park Vitamen	75	78	.490	33.5
Boston Beaneaters	51	103	.331	58.0
<b>McCorkindale Division</b>				
Mexicali Mallards	95	59	.617	-
Cleveland Naps	86	68	.558	9.0
Bradenton Buckeyes	73	81	.474	22.0
Bergen Barflies	56	98	.364	39.0
<b>Kirwin Division</b>				
Newton Buccs	91	63	.591	-
Mimosa Mirthmakers	81	73	.526	10.0
Grand Rapids Wolverines	67	87	.435	24.0
Waukesha Freeman	59	95	.383	32.0
<b>Seitz Division</b>				
Hereford Highlanders	84	70	.545	-
Turin Mountaineers	82	72	.532	2.0
Wilderness Wraiths	74	80	.481	10.0

# 1904

**The 11 players with the best Wins - Losses**

Name	Tm	Lg	W - L	PCT
YOUNG, C.	SO	TCBA	35-11	.761
LEEVEE, S.	NB	TCBA	30-11	.732
HAHN, N.	ME	TCBA	29-8	.784
MATHEWSON, C.	CL	TCBA	28-13	.683
TAYLOR, J.	CL	TCBA	27-12	.692
SPARKS, T.	LI	TCBA	25-8	.758
WHITE, D.	LI	TCBA	25-10	.714
EWING, B.	LI	TCBA	24-6	.800
SUDHOFF, W.	MI	TCBA	24-12	.667

2 players tied at 23

**The 10 players with the lowest Earned Run Average**

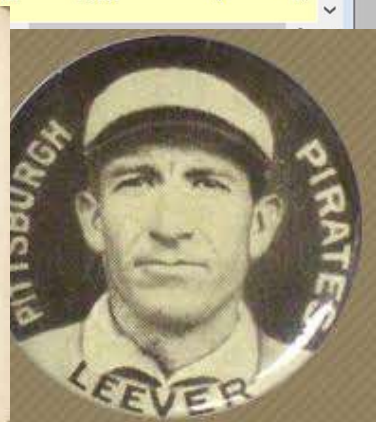
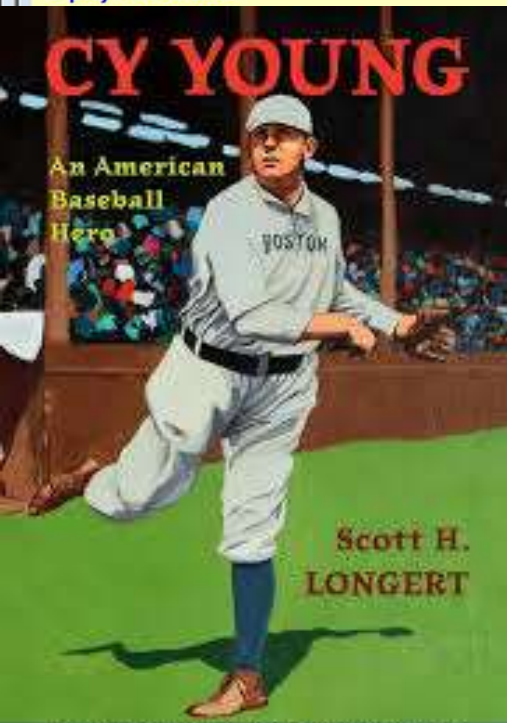
Name	Tm	Lg	ERA	IP
LEEVEE, S.	NB	TCBA	1.74	345.2
MATHEWSON, C.	CL	TCBA	1.78	380.0
PHILLIPPE, D.	BU	TCBA	1.86	344.1
YOUNG, C.	SO	TCBA	1.90	374.1
SIEVER, E.	HP	TCBA	2.20	290.0
DONAHUE, R.	WW	TCBA	2.28	252.2
SUDHOFF, W.	MI	TCBA	2.32	344.2
SPARKS, T.	LI	TCBA	2.35	283.0
GRIFFITH, C.	HH	TCBA	2.37	258.2
MOORE, E.	HH	TCBA	2.40	296.0

**The 10 players with the most Strikeouts**

Name	Tm	Lg	SO	IP
MATHEWSON, C.	CL	TCBA	321	380.0
WADDELL, R.	NB	TCBA	279	335.2
YOUNG, C.	SO	TCBA	205	374.1
POWELL, J.	MI	TCBA	199	334.1
DONOVAN, W.	BS	TCBA	197	330.0
MOORE, E.	HH	TCBA	189	296.0
CHESBRO, J.	BE	TCBA	176	343.1
PLANK, E.	TU	TCBA	174	370.1
HAHN, N.	ME	TCBA	173	339.1
PIATT, W.	BR	TCBA	166	240.2

**The 14 players with the most Shutouts**

Name	Tm	Lg	SHO	GS
LEEVEE, S.	NB	TCBA	10	41
TAYLOR, J.	CL	TCBA	8	42
EWING, B.	LI	TCBA	7	34
MATHEWSON, C.	CL	TCBA	7	45
MOORE, E.	HH	TCBA	6	35
YOUNG, C.	SO	TCBA	6	45
WHITE, D.	LI	TCBA	5	38
WADDELL, R.	NB	TCBA	5	39
SUDHOFF, W.	MI	TCBA	5	40





The 10 players with the highest Batting Average

Name	Tm	Lg	AVG	PA
CLARKE, F.	MI	TCBA	.429	556
CRAWFORD, S.	GW	TCBA	.383	675
BECKLEY, J.	BR	TCBA	.376	583
BROWNE, G.	LI	TCBA	.372	478
CHANCE, F.	ME	TCBA	.367	592
LAJOIE, N.	BR	TCBA	.367	607
BRESNAHAN, R.	WW	TCBA	.365	523
SEYMOUR, C.	BR	TCBA	.355	665
DONLIN, M.	BU	TCBA	.354	612
THOMAS, R.	LI	TCBA	.351	629



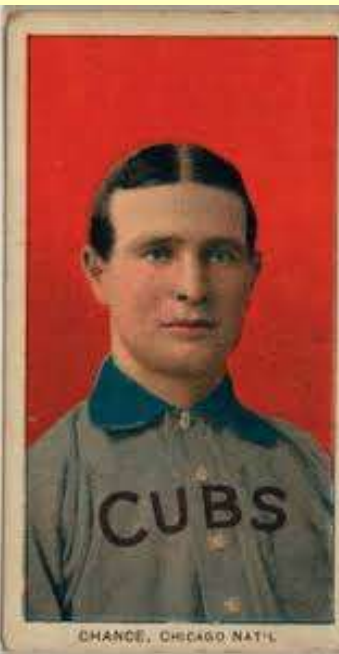
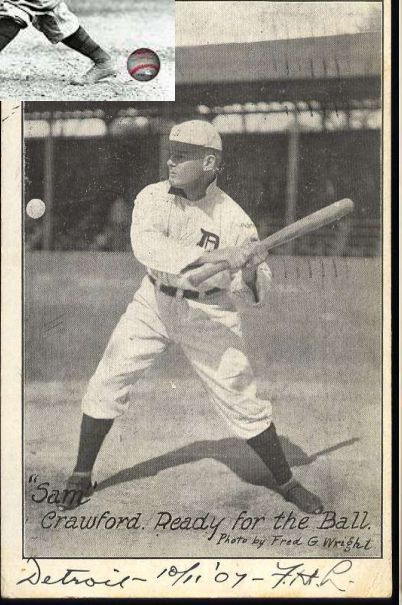
The 13 players with the most Triples

Name	Tm	Lg	3B	PA
WAGNER, H.	WA	TCBA	25	663
DONLIN, M.	BU	TCBA	24	612
PARENT, F.	SO	TCBA	19	663
MERRITT, G.	WA	TCBA	18	593
COLLINS, J.	GW	TCBA	18	622
FLICK, E.	LI	TCBA	18	661
STEINFELDT, H.	CL	TCBA	17	567
BRADLEY, B.	TU	TCBA	17	679

5 players tied at 16

The 10 players with the most Home Runs

Name	Tm	Lg	HR	PA
FREEMAN, B.	GW	TCBA	14	622
LAJOIE, N.	BR	TCBA	13	607
HICKMAN, C.	BE	TCBA	11	619
McFARLAND, H.	CL	TCBA	10	462
Meade, L.	BE	TCBA	9	518
Katon, N.	BU	TCBA	9	579
Sajdak, K.	WA	TCBA	9	612
GREMINGER, E.	NB	TCBA	9	631
WAGNER, H.	WA	TCBA	9	663
BRADLEY, B.	TU	TCBA	9	679



The 10 players with the most Runs Scored

Name	Tm	Lg	R	PA
CHANCE, F.	ME	TCBA	138	592
GREEN, D.	TU	TCBA	133	680
FLICK, E.	LI	TCBA	130	661
ELBERFELD, K.	BR	TCBA	128	634
SEYMOUR, C.	BR	TCBA	126	665
BARRETT, J.	HP	TCBA	126	717
LAJOIE, N.	BR	TCBA	124	607
STRANG, S.	HH	TCBA	120	683
TENNEY, F.	CL	TCBA	119	613
MERTES, S.	NB	TCBA	118	692

The 10 players with the most Runs Batted In

Name	Tm	Lg	RBI	PA
SEYMOUR, C.	BR	TCBA	147	665
FREEMAN, B.	GW	TCBA	129	622
ANDERSON, B.	MI	TCBA	121	670
BECKLEY, J.	BR	TCBA	119	583
LAJOIE, N.	BR	TCBA	113	607
PARENT, F.	SO	TCBA	111	663
BEAUMONT, G.	NB	TCBA	109	704
BRADLEY, B.	TU	TCBA	106	679
GREMINGER, E.	NB	TCBA	105	631
GANZEL, J.	LI	TCBA	104	563

The 11 players with the most Hits

Name	Tm	Lg	H	PA
CRAWFORD, S.	GW	TCBA	235	675
SEYMOUR, C.	BR	TCBA	216	665
CLARKE, F.	MI	TCBA	212	556
GREEN, D.	TU	TCBA	208	680
BEAUMONT, G.	NB	TCBA	205	704
LAJOIE, N.	BR	TCBA	201	607
FLICK, E.	LI	TCBA	198	661
COOLEY, D.	ME	TCBA	196	656

3 players tied at 195

The 12 players with the most Doubles

Name	Tm	Lg	2B	PA
CLARKE, F.	MI	TCBA	53	556
SEYBOLD, S.	BE	TCBA	52	654
BRADLEY, B.	TU	TCBA	49	679
MERTES, S.	NB	TCBA	46	692
CHANCE, F.	ME	TCBA	45	592
STEINFELDT, H.	CL	TCBA	44	567
COLLINS, J.	GW	TCBA	40	622
LAJOIE, N.	BR	TCBA	39	607
FREEMAN, B.	GW	TCBA	39	622

3 players tied at 38

The 10 players with the most Stolen Bases

Name	Tm	Lg	SB	ASB
MERTES, S.	NB	TCBA	51	67
SHECKARD, J.	HP	TCBA	44	58
SEYMOUR, C.	BR	TCBA	42	55
MCGANN, D.	NB	TCBA	39	50
DOUGHERTY, P.	ME	TCBA	39	51
WAGNER, H.	WA	TCBA	36	44
BECKLEY, J.	BR	TCBA	36	50
STRANG, S.	HH	TCBA	35	44
CHANCE, F.	ME	TCBA	34	48
TINKER, J.	NB	TCBA	33	45



16 Teams	AVG	OBP	SLG	G	AB	H	2B	3B	HR	R	R/G	SO	BB	LOB	SB	CS	SBP
South Starrucca Ainspans	.287	.337	.361	153	5464	1569	225	74	10	811	5.3	547	410	1159	171	86	66.5
Long Island Islanders	.282	.349	.358	152	5381	1519	241	68	10	861	5.7	573	542	1223	132	63	67.7
Mexicali Mallards	.279	.337	.362	154	5431	1515	236	69	25	840	5.5	610	453	1146	187	64	74.5
Bradenton Buckeyes	.276	.326	.357	154	5467	1511	237	66	23	805	5.2	587	394	1113	190	65	74.5
Mimosa Mirthmakers	.271	.324	.353	154	5506	1494	230	93	12	796	5.2	719	402	1121	103	51	66.9
Hyde Park Vitamen	.268	.332	.348	153	5352	1433	209	77	22	743	4.9	621	473	1169	138	63	68.7
Turin Mountaineers	.264	.321	.358	154	5398	1427	275	80	23	765	5.0	594	423	1123	153	52	74.6
Cleveland Naps	.263	.317	.347	154	5332	1402	242	54	32	770	5.0	635	409	1052	121	52	69.9
Grand Rapids Wolverines	.261	.319	.349	154	5365	1402	231	74	30	721	4.7	668	406	1137	108	36	75.0
Newton Buccs	.260	.316	.349	154	5474	1422	256	68	33	759	4.9	605	408	1121	212	85	71.4
Hereford Highlanders	.259	.318	.333	154	5368	1389	246	50	17	709	4.6	611	414	1144	128	66	66.0
Boston Beaneaters	.251	.305	.327	154	5333	1340	212	73	15	611	4.0	636	394	1147	108	44	71.1
Wilderness Wraiths	.245	.312	.310	154	5252	1289	192	51	15	595	3.9	632	401	1180	123	53	69.9
Waukesha Freeman	.243	.289	.321	154	5480	1333	180	91	21	613	4.0	703	305	1094	121	66	64.7
Bergen Barflies	.240	.289	.338	154	5357	1288	230	93	36	611	4.0	643	355	1057	89	51	63.6
Buffalo Mules	.221	.275	.279	154	5184	1148	139	53	17	488	3.2	637	376	1048	92	35	72.4
TCBA Origins 1903 MLB	.261	.317	.341	1230	86144	22481	3581	1134	341	11498	9.3	10021	6565	18034	2176	932	70.0



# TEAM LEADERS

16 Teams	ERA	G	CG	SHO	QS	SV	IP	H	R	ER	HR	SO	BB	HB	WP	BK	OBA
Wilderness Wraiths	2.69	154	85	8	84	5	1373.0	1256	616	411	16	612	316	46	28	2	.237
Long Island Islanders	2.78	152	84	21	92	25	1389.2	1245	524	429	16	574	362	52	25	1	.238
Newton Buccs	2.90	154	100	20	85	8	1416.1	1287	580	456	16	665	421	48	32	1	.239
Hereford Highlanders	3.07	154	101	12	92	8	1373.0	1262	616	468	18	666	390	50	28	0	.241
South Starrucca Ainspans	3.08	153	91	11	75	13	1375.1	1229	603	471	17	672	430	55	15	1	.235
Mexicali Mallards	3.20	154	108	14	81	7	1384.2	1394	612	492	23	560	307	46	27	1	.261
Cleveland Naps	3.37	154	109	19	75	4	1371.2	1402	701	514	18	737	345	64	19	0	.261
Turin Mountaineers	3.51	154	85	8	78	15	1382.2	1443	710	540	21	637	402	52	19	0	.267
Buffalo Mules	3.55	154	134	6	69	1	1366.0	1351	743	539	29	678	409	62	35	2	.253
Waukesha Freeman	3.60	154	118	10	69	4	1404.0	1362	738	561	32	673	443	54	24	0	.253
Hyde Park Vitamen	3.62	153	101	8	61	8	1370.1	1508	776	551	24	534	411	68	31	0	.278
Mimosa Mirthmakers	3.67	154	112	11	71	6	1394.0	1404	732	569	29	639	398	59	19	0	.259
Bergen Barflies	3.86	154	90	6	60	7	1370.1	1462	843	588	24	570	447	53	35	1	.268
Grand Rapids Wolverines	4.28	154	98	8	59	12	1362.0	1564	834	648	18	547	468	57	16	1	.285
Bradenton Buckeyes	4.74	154	81	7	55	22	1377.0	1659	929	725	26	674	482	49	30	2	.295
Boston Beaneaters	4.91	154	119	5	47	2	1357.2	1653	941	740	14	583	534	54	18	2	.298
TCBA Origins 1903 MLB	3.55	1230	1616	174	1153	147	22067.2	22481	11498	8702	341	10021	6565	869	401	14	.261

U-TCB904 - TCBA Origins 1903 MLB - Club Fielding

16 Teams	FLD	G	PO	A	E	DP	TP	PB	OSB	OCS	OSBP	OSBA	DER	UER	UERP
Long Island Islanders	.973	152	4169	1893	171	119	0	14	114	62	64.8	.738	.715	95	18.1
Mexicali Mallards	.972	154	4154	1978	175	124	0	16	95	62	60.5	.617	.692	120	19.6
Newton Buccs	.971	154	4249	1898	181	114	0	18	113	44	72.0	.718	.708	124	21.4
Hereford Highlanders	.968	154	4119	1852	197	117	0	29	88	46	65.7	.577	.702	148	24.0
South Starrucca Ainspans	.967	153	4126	1858	202	88	0	22	122	59	67.4	.798	.707	132	21.9
Grand Rapids Wolverines	.965	154	4086	1956	222	133	0	25	136	50	73.1	.899	.661	186	22.3
Turin Mountaineers	.964	154	4148	1985	230	133	1	27	128	73	63.7	.833	.673	170	23.9
Mimosa Mirthmakers	.963	154	4182	1883	232	127	0	13	182	67	73.1	1.175	.683	163	22.3
Waukesha Freeman	.961	154	4212	1911	250	120	0	17	85	53	61.6	.545	.688	177	24.0
Bradenton Buckeyes	.960	154	4131	1942	250	139	0	28	139	53	72.4	.908	.640	204	22.0
Hyde Park Vitamen	.960	153	4111	2032	254	145	0	26	139	62	69.2	.913	.666	225	29.0
Cleveland Naps	.960	154	4115	1774	245	106	0	23	145	72	66.8	.951	.670	187	26.7
Boston Beaneaters	.960	154	4073	1823	247	131	0	26	128	51	71.5	.849	.643	201	21.4
Buffalo Mules	.958	154	4098	1904	264	99	0	17	151	55	73.3	.995	.682	204	27.5
Wilderness Wraiths	.955	154	4119	1850	284	83	0	23	171	71	70.7	1.121	.698	205	33.3
Bergen Barflies	.952	154	4111	1887	301	91	0	35	240	52	82.2	1.576	.669	255	30.2
TCBA Origins 1903 MLB	.963	1230	66203	30426	3705	1869	1	359	2176	932	70.0	.887	.681	2796	24.3

**1904 Gold Glove Winners**  
**2B-Nap LaJoie, BR**  
**3B-Lave Cross, WA**  
**SS-Bill Dahlen, GW**  
**LF-Kip Selbach, BE**  
**CF-Billy Lush, LI**  
**RF-Herm McFarland, CS**  
**1B-John Ganzel, LI**  
**C-Ossee Schreckengost, ME**  
**P-Roy Hobbs, CS**



A baseball is positioned in the center of the image, partially obscured by the text. The top half of the ball is visible, showing its characteristic red and white stitching.

**BASEBALL**  
**PLAYOFFS**

SEMI

FINAL

# SEMI-FINALS ORIGINS

## 1904 CHAMPIONSHIP

**Mexicali edges Newton, 4 games to 2 in 10 innings**  
**Long Island prevails over Hereford, 4 games to 2**



### 12 Games Played

Date	No.	Team	R	H	E	Inn	G Sc	Starters	Decisions	Save
10/01/03	6	Hereford Highlanders	7	16	2		26	V. WILLIS	L, V. WILLIS	
18:45m	6	Long Island Islanders	10	12	0		31	B. EWING	W, C. LUNDGREN	D. WHITE
10/01/03	6	Newton Buccs	0	4	2	10	76	S. LEEVER	L, S. LEEVER	
22:37m	6	Mexicali Mallards	1	4	0		86	G. WINTER	W, G. WINTER	None
09/29/03	5	Long Island Islanders	0	4	0		49	B. EWING	L, B. EWING	
9:56m	5	Hereford Highlanders	2	5	1		83	E. MOORE	W, E. MOORE	None
09/29/03	5	Mexicali Mallards	2	9	0		55	C. MCFARLAND	L, C. MCFARLAND	
8:35m	5	Newton Buccs	3	7	0		47	R. WADDELL	W, R. EVANS	P. FLAHERTY
09/28/03	4	Long Island Islanders	6	8	0		63	T. SPARKS	W, T. SPARKS	None
12:46m	4	Hereford Highlanders	3	9	1		48	N. GIBSON	L, N. GIBSON	
09/28/03	4	Mexicali Mallards	3	7	1		76	N. HAHN	W, N. HAHN	None
8:11m	4	Newton Buccs	1	6	1		58	H. SCHMIDT	L, H. SCHMIDT	
09/27/03	3	Long Island Islanders	13	15	1		82	D. WHITE	W, D. WHITE	None
15:55m	3	Hereford Highlanders	0	4	3		17	V. WILLIS	L, V. WILLIS	
09/27/03	3	Mexicali Mallards	4	9	0		82	G. WINTER	W, G. WINTER	None
9:21m	3	Newton Buccs	0	2	1		53	S. LEEVER	L, S. LEEVER	
09/25/03	2	Hereford Highlanders	10	13	0		68	E. MOORE	W, E. MOORE	None
15:24m	2	Long Island Islanders	1	5	1		36	B. EWING	L, B. EWING	
09/25/03	2	Newton Buccs	6	12	1	12	82	R. WADDELL	W, R. WADDELL	None
39:31m	2	Mexicali Mallards	3	6	1		66	C. MCFARLAND	L, G. WINTER	
09/24/03	1	Hereford Highlanders	3	12	3	12	68	V. WILLIS	L, N. GIBSON	
18:45m	1	Long Island Islanders	4	8	1		42	D. WHITE	W, T. SPARKS	None
09/24/03	1	Newton Buccs	0	2	1		58	S. LEEVER	L, S. LEEVER	
19:24m	1	Mexicali Mallards	3	7	2		85	N. HAHN	W, N. HAHN	None



1904



**Long Island needs 13 innings  
in the 6<sup>th</sup> game to defeat  
Mexicali for the World Series  
Championship.**

6 Games Played

Date	No.	Team	R	H	E	Inn	G Sc	Starters	Decisions	Save
10/10/03	6	Mexicali Mallards	5	10	0	13	55	G. WINTER	L, B. REIDY	
25:50m	6	Long Island Islanders	6	10	1		30	D. WHITE	W, C. LUNDGREN	None
Date	No.	Team	R	H	E		G Sc	Starters	Decisions	Save
10/08/03	5	Long Island Islanders	8	12	1		48	T. SPARKS	W, T. SPARKS	C. LUNDGREN
15:45m	5	Mexicali Mallards	5	9	2		29	C. MCFARLAND	L, C. MCFARLAND	
Date	No.	Team	R	H	E		G Sc	Starters	Decisions	Save
10/07/03	4	Long Island Islanders	1	8	1		54	B. EWING	L, B. EWING	
15:04m	4	Mexicali Mallards	3	8	1		69	N. HAHN	W, N. HAHN	None
Date	No.	Team	R	H	E		G Sc	Starters	Decisions	Save
10/06/03	3	Long Island Islanders	14	16	0		75	D. WHITE	W, D. WHITE	None
25:06m	3	Mexicali Mallards	0	4	2		59	G. WINTER	L, G. WINTER	
Date	No.	Team	R	H	E		G Sc	Starters	Decisions	Save
10/04/03	2	Mexicali Mallards	4	5	2		30	C. MCFARLAND	L, C. MCFARLAND	
13:49m	2	Long Island Islanders	7	12	1		63	T. SPARKS	W, T. SPARKS	None
Date	No.	Team	R	H	E		G Sc	Starters	Decisions	Save
10/03/03	1	Mexicali Mallards	5	12	0		54	N. HAHN	W, N. HAHN	None
27:58m	1	Long Island Islanders	4	9	2		40	D. WHITE	L, B. EWING	

4:03 PM

No Selections Made

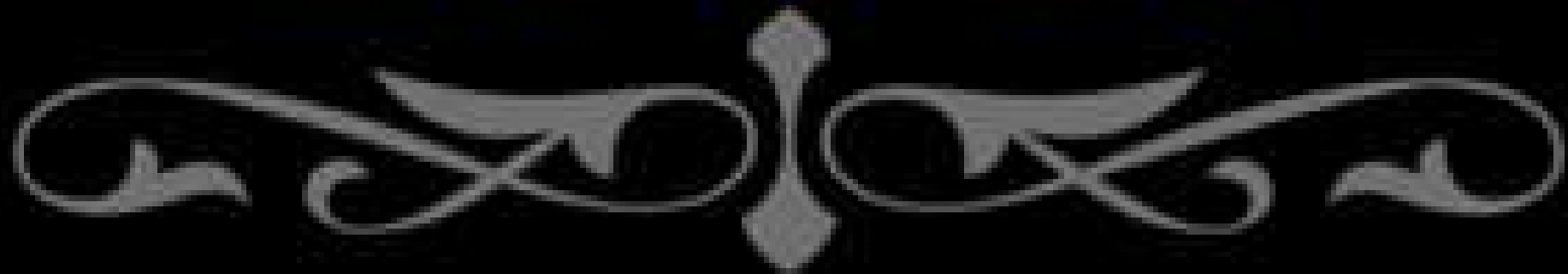
1904.





**TCBA ORIGINS**

19000s



- 1902 – Turin Mountaineers**
- 1903 – Cleveland Naps**
- 1904 – Long Island Islanders**
- 1905 –**
- 1906 –**
- 1907 –**
- 1908 –**
- 1909 –**



III

9

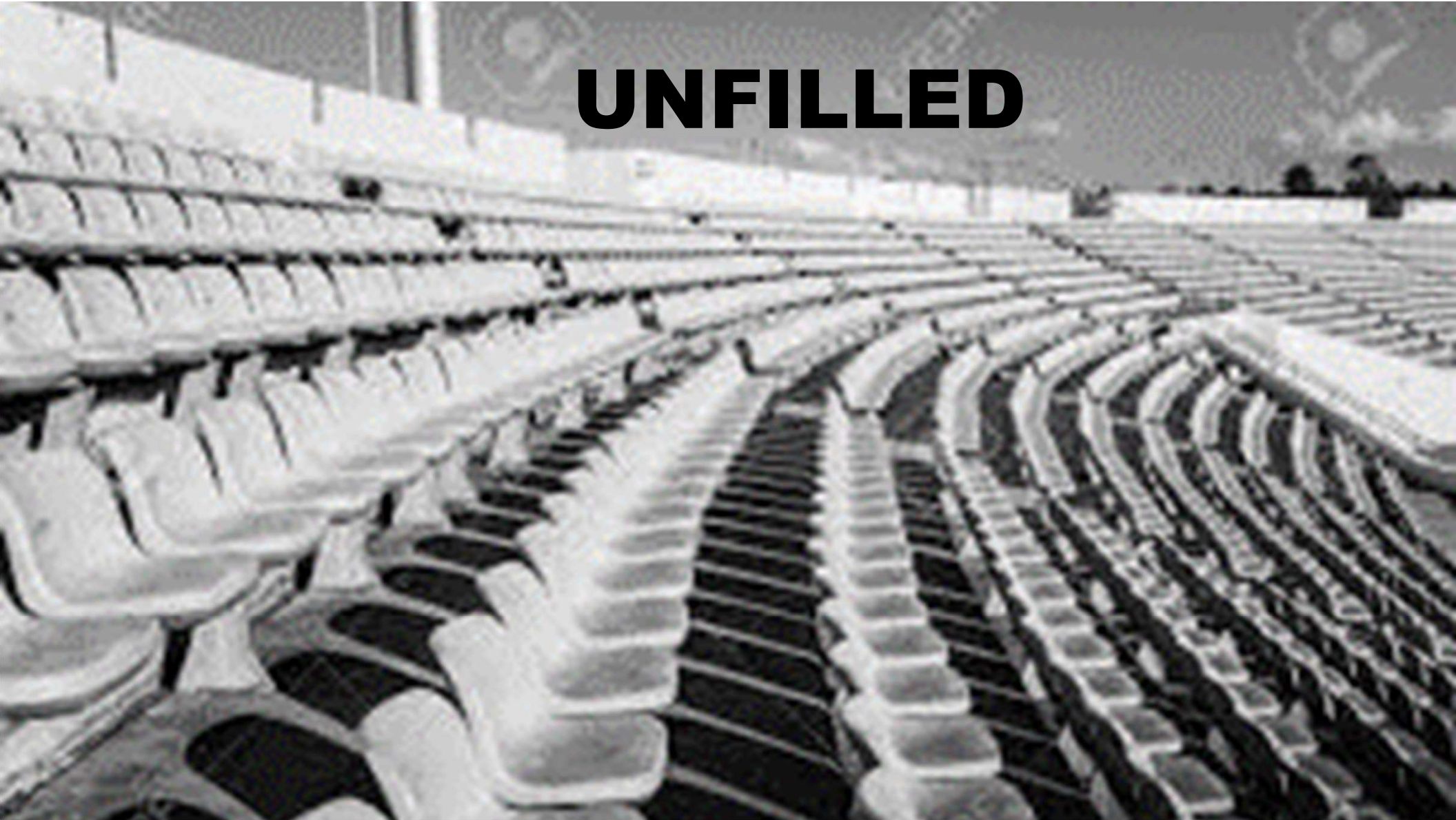
III

O

S



**UNFILLED**

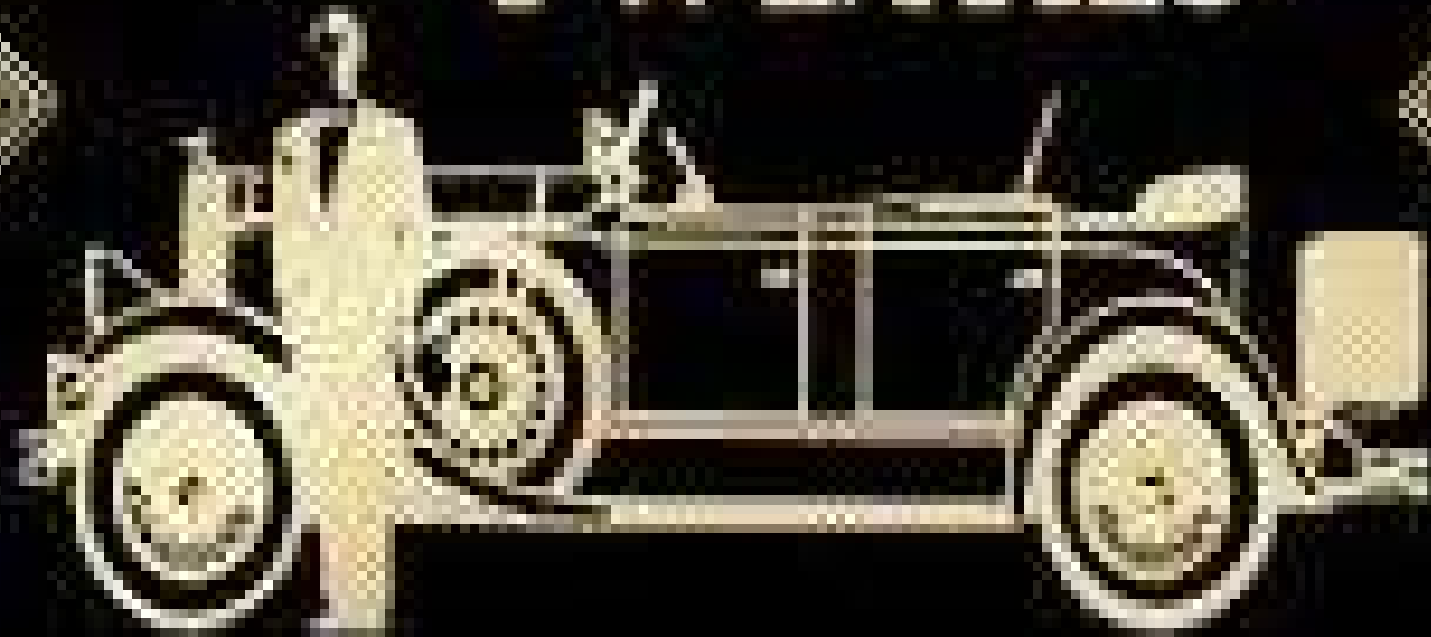




**TCBA GOLD  
1921-1943**

*The Roaring*

TWENTIES





**1921 – Long Island Islanders**  
**1922 – Bergen Barflies**  
**1923 – Siouxland Explorers**  
**1924 – Bergen Barflies**  
**1925 – Mimosa Mirthmakers**  
**1926 – Fortney Gators**  
**1927 – Bergen Barflies**  
**1928 – Bergen Barflies**  
**1929 – Long Island Islanders**



# MARSHALL ISLANDS

1930 ▶ DECADE OF THE GREAT DEPRESSION • 1939

THE 20TH CENTURY

60



ECONOMIC DEPRESSION ENGLUFS THE WORLD

1930s



**1930 – Kilkenny Gaelics**

**1931 – Long Island Islanders**

**1932 – South Starrucca Ainspans**

**1933 – Portsmouth Pubdwellers**

**1934 – Hyde Park VitaMen**

**1935 – Mimosa Mirthmakers**

**1936 – Fortney Gators**

**1937 - South Starrucca Ainspans**

**1938 – Kilkenny Gaelics**

**1939 – South Starrucca Ainspans**

1948

An aerial, black and white photograph of a baseball field during a game. The field is diamond-shaped with a pitcher's mound in the center. Several players are visible on the field, including one in the center of the diamond and others near the bases. The outfield is visible with some players positioned there. In the background, the stadium seating is filled with spectators. There are several large signs or advertisements on the outfield fence, including one that appears to say "NATIONAL" and another that says "AMERICAN".

**1940 – Chesapeake Regnads**  
**1941 – Bergen Barflies**  
**1942 – Sacramento Solons**  
**1943 – South Starrucca Ainspans**



**1944-1974**

**T C B A**

**YESTERDAY**

“The best thing about baseball today is its yesterdays.” Lawrence Ritter

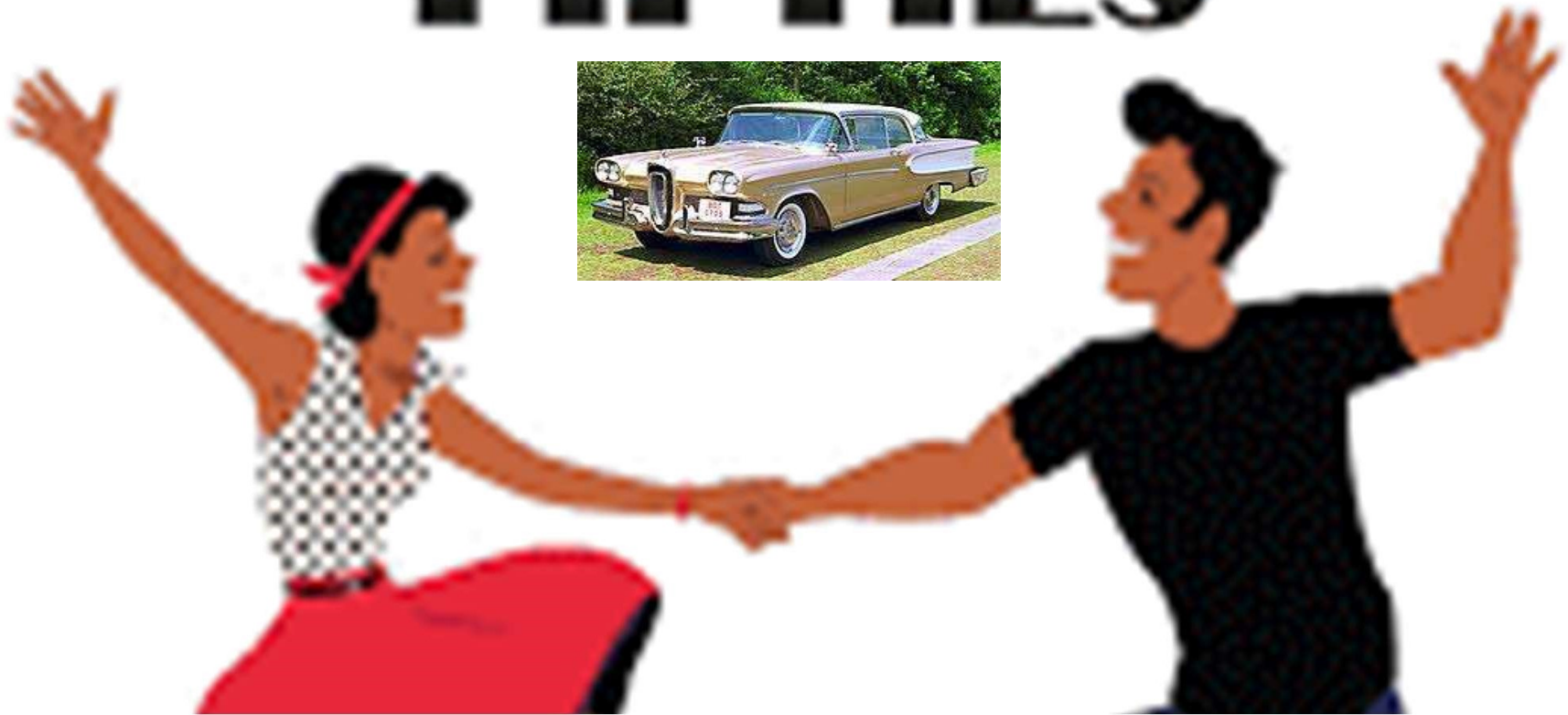
1940s





**1944 – Long Island Islanders**  
**1945 – Mexicali Mallards**  
**1946 – Sacramento Solons**  
**1947 – Mimosa Mirthmakers**  
**1948 – Bradenton Buckeyes**  
**1949 – Bradenton Buckeyes**

# THE FABULOUS FIFTIES







**1950 – South Starrucca Ainspans**  
**1951 – Mimosa Mirthmakers**  
**1952 – Fortney Gators**  
**1953 – Fortney Gators**  
**1954 – South Starrucca Ainspans**

**1955 – Norfolk Pilots**  
**1956 – Hyde Park VitaMen**  
**1957 – Hyde Park VitaMen**  
**1958 – Hyde Park VitaMen**  
**1959 – Bradenton Buckeyes**





- 1960 – Bradenton Buckeyes**
- 1961 – Wilderness Wraiths**
- 1962 – South Starrucca Ainspans**
- 1963 – South Starrucca Ainspans**
- 1964 – Mimosa Mirthmakers**
- 1965 – Bergen Barflies**
- 1966 – South Starrucca Ainspans**
- 1967 – South Starrucca Ainspans**
- 1968 – Long Island Islanders**
- 1969 – Cleveland Spiders**

**ZOO**

The image features the word "ZOO" in a large, bold, white, sans-serif font. Each letter is outlined with a thick black border. The background is a vibrant, abstract pattern of overlapping shapes in shades of orange, yellow, and teal. The overall style is graphic and modern.

An aerial photograph of a baseball stadium, showing the green field, brown dirt base paths, and the surrounding seating areas filled with spectators. The stadium lights are visible in the background. Overlaid on the field is a list of teams and their years.

**1970 – Fortney Gators**  
**1971 – Newmarket Eh's**  
**1972 – Hyde Park VitaMen**  
**1973 – Long Island Islanders**  
**1974 – Norfolk Pilots**

TCBA



**1975 - 2020**





**1975 – Harbor Beach Combers**  
**1976 – Hyde Park Vitamen**  
**1977 – Shiloh Spurs**  
**1978 – Greylock Gators**  
**1979 – Rockford Patriots**



TIME

8

0

S



**1980 – Norfolk Pilots**

**1981 – Winnebago Indians**

**1982 – Winnebago Indians**

**1983 – Long Island Islanders**

**1984 – Mimosa Mirthmakers**

**1985 – Long Island Islanders**

**1986 – Meadowlands Spartans**

**1987 – Long Island Islanders**

**1988 – Scranton Spanish Flies**

**1989 – Beacon Braves**

1990s



**1990 – Scranton Spanish Flies**

**1991 – Scranton Spanish Flies**

**1992 – Bethesda Bambinos**

**1993 – Scranton Spanish Flies**

**1994 – Scranton Spanish Flies**


**1995 – Horseshoe Bay Polos**

**1996 – Bethesda Bambinos**

**1997 – Rapidan Rapids**

**1998 – Newark Eagles**

**1999 – Newark Eagles**



2000's



**2000 – Long Island Islanders**

**2001 – Farmington Rats**

**2002 – Scranton Spanish Flies**

**2003 – Horseshoe Bay Polos**

**2004 – Newark Eagles**

**2005 – Pennsylvania Keystones**

**2006 – Farmington Rats**

**2007 – Long Island Islanders**

**2008 – Horseshoe Bay Polos**

**2009 – Silver Spring Senators**



the  
**2010s**

**DECADE IN REVIEW**



**2010 – Scranton Spanish Flies**      **2015- Scranton Spanish Flies**  
**2011 – Fargo Fungoes**                      **2016 – Rochester Cheetahs**  
**2012 – Bethesda Bambinos**              **2017 – Beacon Braves**  
**2013 – Bethesda Bambinos**              **2018 – Bethesda Bambinos**  
**2014 – Newark Eagles**                      **2019 – Long Island Islanders**



