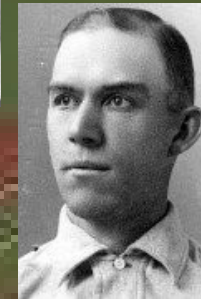
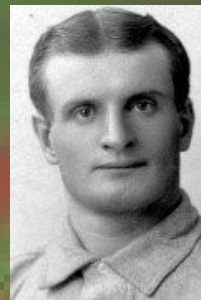


1-Frank Corridon 2-Ralph Caldwell

Newton Buccs Draft Picks



**1-Dan McGann, 1B 2-Sam Mertes, RF 3-Ginger Beaumont, CF
4-Dave Fultz, LF 5-Joe Tinker, SS 6-Hobe Ferris, 2B
7-Ed Gremminger, 3B 8-Fritz Buelow, C 9-Rube Waddell, P**

**NEWTON BUCC STARTING
LINEUP OPENING DAY**

17 Players	Tm	Lg	AVG	G	AB	R	H	2B	3B	HR	TB	RBI	SO	BB	ASB	SB	CS
BEAUMONT, G.	NB	TCBA	.303	153	617	87	187	13	7	3	223	85	46	41	43	35	8
MCGANN, D.	NB	TCBA	.298	135	504	99	150	21	5	9	208	61	50	42	46	36	10
MERTES, S.	NB	TCBA	.268	142	538	76	144	35	8	5	210	94	43	43	48	32	16
Beeman, J.	NB	TCBA	.257	78	191	17	49	9	2	3	71	25	40	20	2	2	0
CALDWELL, R.	NB	TCBA	.255	21	47	5	12	0	0	0	12	3	3	6	0	0	0
FULTZ, D.	NB	TCBA	.252	114	337	38	85	15	3	0	106	40	24	20	17	10	7
FLAHERTY, P.	NB	TCBA	.250	41	124	22	31	6	8	1	56	17	26	16	0	0	0
FERRIS, H.	NB	TCBA	.249	151	558	58	139	23	12	4	198	87	81	42	16	8	8
TINKER, J.	NB	TCBA	.237	142	540	61	128	9	10	3	166	69	74	36	58	41	17
SHAY, D.	NB	TCBA	.222	82	266	46	59	4	0	0	63	21	29	36	25	19	6
LEEVEER, S.	NB	TCBA	.214	35	98	17	21	3	0	0	24	4	15	9	0	0	0
GREMMINGER, E.	NB	TCBA	.200	148	500	46	100	21	6	0	133	60	54	38	1	0	1
MORAN, C.	NB	TCBA	.175	49	120	8	21	2	1	0	25	6	17	6	4	3	1
CORRIDON, F.	NB	TCBA	.165	31	85	4	14	0	0	0	14	5	15	3	0	0	0
BUELOW, F.	NB	TCBA	.154	150	456	54	70	13	2	0	87	26	67	40	5	3	2
WADDELL, R.	NB	TCBA	.152	45	125	15	19	3	0	0	22	0	25	7	1	1	0
ABBOTT, F.	NB	TCBA	.133	45	60	9	8	3	1	0	13	2	13	6	1	0	1
Newton Buccs			.239	1562	5166	662	1237	180	65	28	1631	605	622	411	267	190	77



Ginger Beaumont highlighted the Bucc attack, hitting .303 with 87 runs, 187 hits and 85 RBI. Dan McGann (.298) led the club with 99 runs and 9 home runs. Sam Mertes led the team with 94 RBI and 35 doubles. Joe Tinker's 41 stolen bases lead a quartet of thieves that each swiped at least 30 bases. Slick fielding 2nd baseman Hobe Ferris had a team high 12 triples while driving in 87 runs. Super Sub Ed Gremminger joined the above quintet in the 100+ hit club, with an even 100 safeties, 27 for extra bases as Newton won their third consecutive Kirwin Division Championship.

7 Pitchers	Tm	Lg	W	L	PCT	SV	ERA	G	GS	CG	SHO	QS	IP	H	R	ER	HR	SO	BB
FLAHERTY, P.	NB	TCBA	25	11	.694	0	2.09	37	37	34	5	26	327.1	245	95	76	1	103	70
CORRIDON, F.	NB	TCBA	14	10	.583	1	2.56	30	24	20	4	12	224.2	178	87	64	2	112	68
LEEVEY, S.	NB	TCBA	16	15	.516	0	2.92	35	33	26	3	18	274.0	235	108	89	3	81	68
WADDELL, R.	NB	TCBA	27	16	.628	0	2.94	45	45	32	7	25	361.1	258	134	118	6	285	103
CALDWELL, R.	NB	TCBA	3	13	.188	1	5.01	21	13	10	0	2	120.1	147	91	67	2	105	50
Beeman, J.	NB	TCBA	2	0	1.000	6	5.48	16	1	1	1	1	47.2	72	41	29	0	10	13
GREMMINGER, E.	NB	TCBA	1	0	1.000	0	9.61	7	0	0	0	0	19.2	36	25	21	0	7	6
Newton Buccs			88	65	.575	8	3.04	191	153	123	20	84	1375.0	1171	581	464	14	703	378

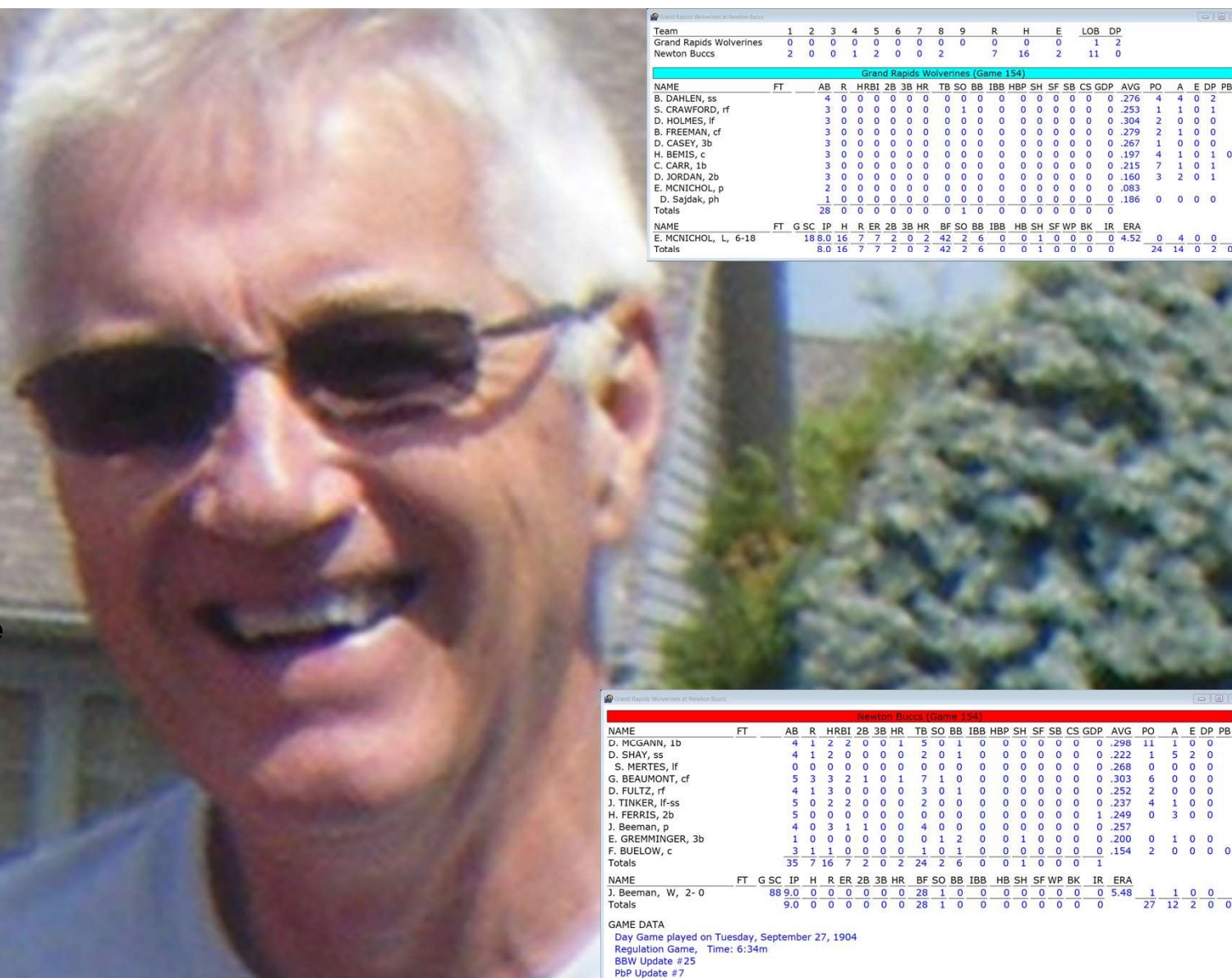
7 Pitchers	Tm	Lg	SUP/9	R/9	ERA	BF/9	BR/9	H/9	BB/9	SO/9	HR/9	ERPT	OBA	BF	BR	IBB	HB	WP	BK
FLAHERTY, P.	NB	TCBA	5.0	2.61	2.09	35.7	8.9	6.7	1.8	2.8	.03	37.4	.208	1297	325	3	13	13	0
CORRIDON, F.	NB	TCBA	3.3	3.49	2.56	37.0	9.8	7.1	2.5	4.5	.08	13.8	.213	923	245	5	4	2	0
LEEVEY, S.	NB	TCBA	4.3	3.55	2.92	36.9	10.2	7.7	2.2	2.7	.10	5.9	.230	1123	312	1	10	2	1
WADDELL, R.	NB	TCBA	4.4	3.34	2.94	36.1	9.2	6.4	2.5	7.1	.15	7.1	.199	1451	370	1	10	10	0
CALDWELL, R.	NB	TCBA	2.5	6.81	5.01	42.2	15.0	11.0	3.7	7.9	.15	-25.3	.299	564	201	1	5	3	0
Beeman, J.	NB	TCBA	1.3	7.74	5.48	42.9	16.4	13.6	2.5	1.9	.00	-12.5	.344	227	87	0	2	0	0
GREMMINGER, E.	NB	TCBA	.0	11.44	9.61	47.6	19.7	16.5	2.7	3.2	.00	-14.2	.379	104	43	0	1	0	0
Newton Buccs			4.0	3.80	3.04	37.2	10.4	7.7	2.4	4.6	.09	12.1	.228	5689	1583	11	45	30	1



The Big Four
Rube Waddell
Patsy
Flaherty
Sam Leever
Frank
Corridon
Left to Right

No-Hitter Finale

**Player Manager
JB Beeman pitched a
no-hitter in the last
regular season game
ever at Newton. Jim
announced his
retirement
immediately after the
game, as well as the
sale of the club to Joe
Elinich, of Pittsburgh**



Grand Rapids Wolverines at Newton Buccs

Team	1	2	3	4	5	6	7	8	9	R	H	E	LOB	DP
Grand Rapids Wolverines	0	0	0	0	0	0	0	0	0	0	0	0	1	2
Newton Buccs	2	0	0	1	2	0	0	2		7	16	2	11	0

Grand Rapids Wolverines (Game 154)

NAME	FT	AB	R	HR	BI	2B	3B	HR	TB	SO	BB	IBB	HBP	SH	SF	SB	CS	GDP	AVG	PO	A	E	DP	PB
B. DAHLEN, ss		4	0	0	0	0	0	0	0	0	0	0	0	0	0	0	0	0	.276	4	4	0	2	
S. CRAWFORD, rf		3	0	0	0	0	0	0	1	0	0	0	0	0	0	0	0	0	.253	1	1	0	1	
D. HOLMES, lf		3	0	0	0	0	0	0	0	0	0	0	0	0	0	0	0	0	.304	2	0	0	0	
B. FREEMAN, cf		3	0	0	0	0	0	0	0	0	0	0	0	0	0	0	0	0	.279	2	1	0	0	
D. CASEY, 3b		3	0	0	0	0	0	0	0	0	0	0	0	0	0	0	0	0	.267	1	0	0	0	
H. BENIS, c		3	0	0	0	0	0	0	0	0	0	0	0	0	0	0	0	0	.197	4	1	0	1	
C. CARR, 1b		3	0	0	0	0	0	0	0	0	0	0	0	0	0	0	0	0	.215	7	1	0	1	
D. JORDAN, 2b		3	0	0	0	0	0	0	0	0	0	0	0	0	0	0	0	0	.160	3	2	0	1	
E. MCNICHOL, p		2	0	0	0	0	0	0	0	0	0	0	0	0	0	0	0	0	.083					
D. Sajdak, ph		1	0	0	0	0	0	0	0	0	0	0	0	0	0	0	0	0	.186	0	0	0	0	
Totals		28	0	0	0	0	0	0	1	0	0	0	0	0	0	0	0	0						

NAME	FT	G	SC	IP	H	R	ER	2B	3B	HR	BF	SO	BB	IBB	HB	SH	SF	WP	BK	IR	ERA			
E. MCNICHOL, L, 6-18		18	8.0	16	7	7	2	0	2	42	2	6	0	0	1	0	0	0	0	0	4.52			
Totals		8.0	16	7	7	2	0	2	42	2	6	0	0	1	0	0	0	0	0	0	24	14	0	2

Grand Rapids Wolverines at Newton Buccs

Newton Buccs (Game 154)																								
NAME	FT	AB	R	HR	BI	2B	3B	HR	TB	SO	BB	IBB	HBP	SH	SF	SB	CS	GDP	AVG	PO	A	E	DP	PB
D. MCGANN, 1b		4	1	2	2	0	0	1	5	0	1	0	0	0	0	0	0	0	.298	11	1	0	0	
D. SHAY, ss		4	1	2	0	0	0	0	2	0	1	0	0	0	0	0	0	0	.222	1	5	2	0	
S. MERTES, lf		0	0	0	0	0	0	0	0	0	0	0	0	0	0	0	0	0	.268	0	0	0	0	
G. BEAUMONT, cf		5	3	3	2	1	0	1	7	1	0	0	0	0	0	0	0	0	.303	6	0	0	0	
D. FULTZ, rf		4	1	3	0	0	0	0	3	0	1	0	0	0	0	0	0	0	.252	2	0	0	0	
J. TINKER, lf-ss		5	0	2	2	0	0	0	2	0	0	0	0	0	0	0	0	0	.237	4	1	0	0	
H. FERRIS, 2b		5	0	0	0	0	0	0	0	0	0	0	0	0	0	0	0	0	1.249	0	3	0	0	
J. Beeman, p		4	0	3	1	1	0	0	4	0	0	0	0	0	0	0	0	0	.257					
E. GREMMINGER, 3b		1	0	0	0	0	0	0	1	2	0	0	1	0	0	0	0	0	.200	0	1	0	0	
F. BUELOW, c		3	1	1	0	0	0	0	1	0	1	0	0	0	0	0	0	0	.154	2	0	0	0	
Totals		35	7	16	7	2	0	2	24	2	6	0	0	1	0	0	0	0	1					

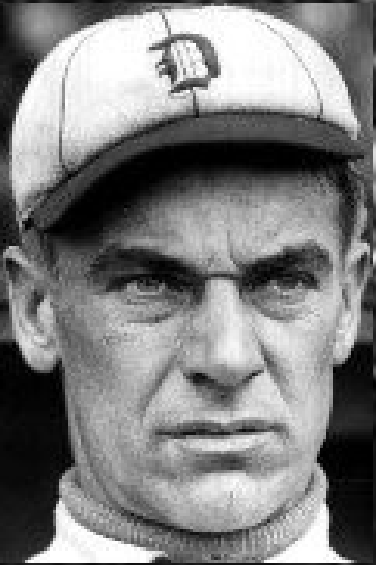
NAME	FT	G	SC	IP	H	R	ER	2B	3B	HR	BF	SO	BB	IBB	HB	SH	SF	WP	BK	IR	ERA			
J. Beeman, W, 2-0		88	9.0	0	0	0	0	0	0	0	28	1	0	0	0	0	0	0	0	0	5.48			
Totals		9.0	0	0	0	0	0	0	0	0	28	1	0	0	0	0	0	0	0	0	27	12	2	0

GAME DATA
Day Game played on Tuesday, September 27, 1904
Regulation Game, Time: 6:34m
BBW Update #25
PbP Update #7



South Starrucca Ainspans

1-Claude Rossman 2-Beanie Jacobson 3-Harry McChesney 4-Orth Collins 5- Pat Hynes



South Starrucca Ainspans Draft Picks

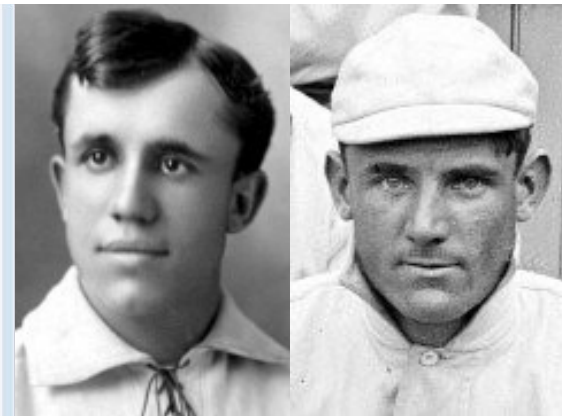


**South Starrucca Ainspans
Opening Day Starting Lineup**



- 1-Danny Green, CF
- 2-Jim Delahanty, 3B
- 3-Matty McIntyre, RF
- 4-Danny Murphy, 2B
- 5-Fred Parent, SS
- 6-Davey Jones, LF
- 7-Heinie Peitz, C
- 8-Jack Doyle 1B
- 9-Cy Young, P

24 Players	Tm	Lg	AVG	G	AB	R	H	2B	3B	HR	TB	RBI	SO	BB	ASB	SB	CS
COLLINS, O.	SO	TCBA	.350	17	20	1	7	2	0	0	9	7	4	0	0	0	0
ALTROCK, N.	SO	TCBA	.346	43	78	5	27	1	0	0	28	6	8	3	0	0	0
MULLIN, G.	SO	TCBA	.343	34	70	15	24	3	3	0	33	10	7	5	0	0	0
ROSSMAN, C.	SO	TCBA	.310	36	58	5	18	4	0	0	22	2	5	0	0	0	0
JONES, D.	SO	TCBA	.290	105	345	63	100	19	6	4	143	42	34	43	19	15	4
PARENT, F.	SO	TCBA	.286	151	604	86	173	22	8	0	211	81	59	37	17	9	8
MURPHY, D.	SO	TCBA	.283	149	566	79	160	32	21	8	258	109	44	32	30	21	9
DOOIN, R.	SO	TCBA	.282	82	216	28	61	7	1	7	91	34	32	3	8	4	4
DELAHANTY, J.	SO	TCBA	.279	145	505	85	141	25	6	5	193	68	44	34	27	20	7
MCCHESENEY, H.	SO	TCBA	.277	35	65	5	18	5	1	0	25	18	3	4	3	1	2
DILLON, P.	SO	TCBA	.273	93	337	36	92	11	7	0	117	43	33	32	4	4	0
GREEN, D.	SO	TCBA	.270	147	540	106	146	18	4	2	178	50	57	69	38	33	5
SUTTHOFF, J.	SO	TCBA	.267	19	15	5	4	0	2	0	8	1	1	4	0	0	0
MCINTYRE, M.	SO	TCBA	.261	150	575	73	150	13	8	3	188	74	47	44	12	6	6
OWEN, F.	SO	TCBA	.252	42	111	9	28	4	0	2	38	9	18	5	4	1	3
Fiehl, S.	SO	TCBA	.221	47	95	7	21	2	0	1	26	7	23	6	0	0	0
PEITZ, H.	SO	TCBA	.221	148	485	45	107	29	2	1	143	53	70	31	1	0	1
YOUNG, C.	SO	TCBA	.220	47	127	18	28	5	1	1	38	10	24	3	3	3	0
DOYLE, J.	SO	TCBA	.220	78	246	24	54	15	3	0	75	26	27	22	1	0	1
HUGHES, L.	SO	TCBA	.194	29	36	3	7	0	1	0	9	2	3	1	0	0	0
DOBBS, J.	SO	TCBA	.176	82	170	23	30	6	0	0	36	9	34	21	4	4	0
HYNES, P.	HP	TCBA	.176	12	34	6	6	2	1	0	10	1	5	1	0	0	0
JACOBSON, B.	SO	TCBA	.097	23	31	1	3	0	0	0	3	3	7	1	0	0	0
WILHELM, K.	SO	TCBA	.079	27	38	3	3	1	0	0	4	2	9	0	0	0	0
South Starrucca Ainspans			.262	1741	5367	731	1408	226	75	34	1886	667	598	401	171	121	50



Fred Parent led the team in hits (173) while Gold-Glove winner Danny Green scored 106 runs and stole 33 bases.



Danny Murphy led the team in RBI (109), doubles (32), triples (21) and home runs (8)



11 Pitchers		Tm	Lg	W	L	PCT	SV	ERA	G	GS	CG	SHO	QS	IP	H	R	ER	HR	SO	BB
ROSSMAN, C.	SO	TCBA	1	0	1.000	0	.00	1	0	0	0	0	0	1.0	2	0	0	0	0	0
YOUNG, C.	SO	TCBA	26	14	.650	2	1.64	47	43	29	6	26	352.0	239	94	64	1	177	32	
OWEN, F.	SO	TCBA	27	9	.750	3	1.80	42	38	22	5	23	310.1	206	100	62	3	90	69	
SUTTHOFF, J.	SO	TCBA	2	4	.333	2	2.08	19	3	3	0	2	52.0	52	21	12	0	20	20	
ALTROCK, N.	SO	TCBA	9	17	.346	8	2.95	43	28	17	2	10	238.1	237	107	78	2	82	38	
MULLIN, G.	SO	TCBA	10	10	.500	1	4.03	32	20	10	2	6	145.1	132	80	65	2	72	66	
HUGHES, L.	SO	TCBA	8	2	.800	1	4.03	28	4	2	0	2	91.2	99	61	41	2	49	51	
JACOBSON, B.	SO	TCBA	3	3	.500	0	4.42	23	8	3	0	3	89.2	140	67	44	1	31	32	
WILHELM, K.	SO	TCBA	5	4	.556	1	4.43	27	10	5	0	2	105.2	133	74	52	5	30	25	
Fiehl, S.	SO	TCBA	0	0	-	0	4.50	1	0	0	0	0	2.0	2	1	1	0	1	1	
HYNES, P.	HP	TCBA	0	0	-	0	9.00	1	0	0	0	0	1.0	2	1	1	0	1	0	
South Starrucca Ainspans			91	63	.591	18	2.72	264	154	91	15	74	1389.0	1244	606	420	16	553	334	

11 Pitchers		Tm	Lg	SUP/9	R/9	ERA	BF/9	BR/9	H/9	BB/9	SO/9	HR/9	ERPT	OBA	BF	BR	IBB	HB	WP	BK
ROSSMAN, C.	SO	TCBA	.0	.00	.00	36.0	18.0	18.0	.0	.0	.00	.3	.500	4	2	0	0	0	0	0
YOUNG, C.	SO	TCBA	4.7	2.40	1.64	34.4	7.0	6.1	.5	4.5	.03	58.1	.188	1346	272	11	12	6	0	
OWEN, F.	SO	TCBA	4.2	2.90	1.80	35.5	8.2	6.0	1.9	2.6	.09	45.6	.185	1224	283	4	12	5	1	
SUTTHOFF, J.	SO	TCBA	2.9	3.63	2.08	38.8	12.3	9.0	3.3	3.5	.00	6.0	.260	224	71	1	0	0	0	
ALTROCK, N.	SO	TCBA	3.5	4.04	2.95	37.8	10.6	8.9	1.2	3.1	.08	4.7	.253	1001	280	5	10	5	0	
MULLIN, G.	SO	TCBA	5.9	4.95	4.03	39.9	12.6	8.2	4.0	4.5	.12	-14.6	.235	644	203	2	7	2	0	
HUGHES, L.	SO	TCBA	1.1	5.99	4.03	41.8	15.0	9.7	5.0	4.8	.20	-9.2	.270	426	153	0	3	3	0	
JACOBSON, B.	SO	TCBA	4.3	6.72	4.42	44.5	17.7	14.1	3.2	3.1	.10	-12.9	.354	443	176	0	4	3	0	
WILHELM, K.	SO	TCBA	3.8	6.30	4.43	41.0	13.6	11.3	2.1	2.6	.43	-15.4	.298	481	160	0	2	3	0	
Fiehl, S.	SO	TCBA	.0	4.50	4.50	40.5	13.5	9.0	4.5	4.5	.00	-.3	.286	9	3	0	0	0	0	
HYNES, P.	HP	TCBA	.0	9.00	9.00	45.0	18.0	18.0	.0	9.0	.00	-.7	.400	5	2	0	0	0	0	
South Starrucca Ainspans			4.1	3.93	2.72	37.6	10.4	8.1	2.0	3.6	.10	61.8	.234	5807	1605	23	50	27	1	



Imaged by Heritage Auctions, H.A.COM



Cy Young (26-14, 1.64 ERA, 177 K, 352 innings) and Frank Owen (27-9, 1.80 ERA, 310.1 innings) started in 81 of the 154 Ainspan games, completing 51 of those with 11 shutouts to lead the staff

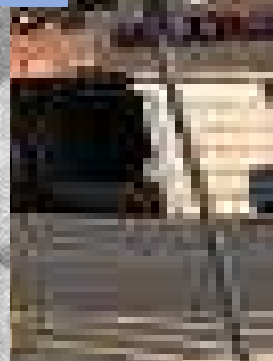


MALLARDS

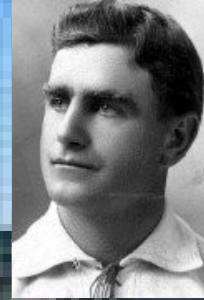
Mexicali Mallards Draft Picks



1-Buttons Briggs 2-Moose McCormick 3-Pete Noonan 4-Bobby Lowe 5-Bob Hall 6-Bill Schwartz



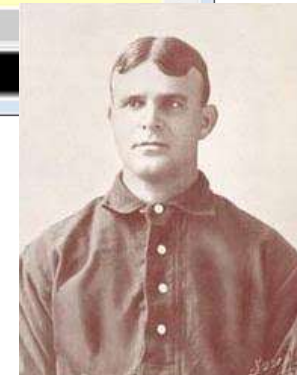
Starting Lineup Opening Day for the Mexicali Mallards



- 1-Frank Chance, 1B**
- 2-Patsy Dougherty, LF**
- 3-Duffy Cooley, CF**
- 4-Chick Stahl, RF**
- 5-Jimmy Williams, 2B**
- 6-Lee Tannehill, 3B**
- 7-Monte Cross SS**
- 8-Ossee Schreckengost C**
- 9-Chick Fraser, P**

24 Players	Tm	Lg	AVG	G	AB	R	H	2B	3B	HR	TB	RBI	SO	BB	ASB	SB	CS
CHANCE, F.	ME	TCBA	.324	115	445	83	144	11	6	5	182	47	40	28	55	43	12
MCCORMICK, M.	ME	TCBA	.302	125	454	53	137	23	10	4	192	63	34	27	27	17	10
STAHL, C.	ME	TCBA	.296	149	558	100	165	39	15	5	249	80	55	72	13	9	4
WILLIAMS, J.	ME	TCBA	.295	148	562	47	166	37	7	0	217	99	43	37	29	22	7
DOUGHERTY, P.	ME	TCBA	.280	146	614	96	172	26	12	5	237	83	56	29	32	22	10
COOLEY, D.	ME	TCBA	.255	98	314	46	80	12	2	1	99	31	33	20	13	10	3
KITTRIDGE, M.	ME	TCBA	.226	125	434	23	98	20	0	0	118	43	62	17	1	1	0
BURKE, J.	ME	TCBA	.222	46	81	13	18	6	0	0	24	6	9	2	4	2	2
HAHN, N.	ME	TCBA	.215	38	107	12	23	4	1	0	29	6	12	12	1	1	0
TANNEHILL, L.	ME	TCBA	.198	146	479	42	95	24	4	0	127	42	55	10	16	13	3
SCHRECKENGOST, O.	ME	TCBA	.183	62	126	10	23	2	0	0	25	9	15	3	0	0	0
CROSS, M.	ME	TCBA	.175	153	537	52	94	26	4	0	128	30	97	48	20	14	6
LOWE, B.	ME	TCBA	.167	23	42	4	7	1	0	0	8	4	9	1	1	1	0
SCHWARTZ, B.	ME	TCBA	.158	43	76	14	12	3	0	0	15	3	15	1	5	2	3
HALL, B.	ME	TCBA	.158	36	57	7	9	1	0	0	10	4	11	5	0	0	0
BRIGGS, B.	ME	TCBA	.154	34	104	10	16	1	1	0	19	10	13	6	0	0	0
Keefer, A.	ME	TCBA	.146	42	41	1	6	2	0	1	11	3	11	3	0	0	0
FRASER, C.	ME	TCBA	.143	34	91	5	13	3	0	0	16	5	17	5	0	0	0
MCFARLAND, C.	ME	TCBA	.104	30	77	3	8	0	0	0	8	1	13	10	0	0	0
NOONAN, P.	ME	TCBA	.100	27	40	2	4	0	0	0	4	1	9	0	0	0	0
WINTER, G.	ME	TCBA	.085	24	47	5	4	0	0	0	4	1	8	5	0	0	0
REIDY, B.	ME	TCBA	.083	17	12	1	1	0	0	0	1	1	2	1	0	0	0
PUTTMANN, A.	ME	TCBA	.077	26	13	1	1	1	0	0	2	0	1	0	0	0	0
MOREN, L.	ME	TCBA	.000	7	2	0	0	0	0	0	0	0	1	0	0	0	0
Mexicali Mallards			.244	1694	5313	630	1296	242	62	21	1725	572	621	342	217	157	60

Frank Chance's injury, late in the season, tipped the scales and ended Mexicali's run at the Division title. The Peerless Leader hit .324 to lead the club. Chick Stahl scored 100 times, with 39 doubles and 15 triples for the Mallards while Jimmy Williams drove in 100 runs



1905 | TCBA Origins 1904 MLB | TCBA Origins | McCorkindale Division | Mexicali Mallards

Frank Chance (L), Jimmy Williams and Chick Stahl

10 Pitchers	Tm	Lg	W	L	PCT	SV	ERA	G	GS	CG	SHO	QS	IP	H	R	ER	HR	SO	BB
BURKE, J.	ME	TCBA	0	0	-	0	-	1	0	0	0	0	.0	1	0	0	0	0	0
WINTER, G.	ME	TCBA	8	9	.471	1	1.91	24	18	12	1	14	160.0	121	44	34	3	50	34
HAHN, N.	ME	TCBA	22	11	.667	2	2.21	38	34	28	3	21	314.0	255	98	77	3	91	58
BRIGGS, B.	ME	TCBA	20	13	.606	0	2.22	34	34	29	5	21	296.0	210	104	73	4	141	76
FRASER, C.	ME	TCBA	16	11	.593	0	2.45	34	33	20	5	17	272.0	222	100	74	3	107	90
PUTTMANN, A.	ME	TCBA	8	5	.615	4	2.92	26	1	0	0	1	49.1	38	19	16	0	24	29
MCFARLAND, C.	ME	TCBA	13	14	.481	0	3.09	30	29	20	4	19	235.2	243	91	81	5	126	42
MOREN, L.	ME	TCBA	0	1	.000	0	5.06	7	1	0	0	0	10.2	13	11	6	1	3	4
REIDY, B.	ME	TCBA	2	0	1.000	0	6.42	17	3	1	0	0	47.2	70	36	34	4	16	12
Keefer, A.	ME	TCBA	0	0	-	0	6.75	2	0	0	0	0	2.2	8	6	2	0	2	0
Mexicali Mallards			89	64	.582	7	2.57	213	153	110	18	93	1388.0	1181	509	397	23	560	345

10 Pitchers	Tm	Lg	SUP/9	R/9	ERA	BF/9	BR/9	H/9	BB/9	SO/9	HR/9	ERPT	OBA	BF	BR	IBB	HB	WP	BK
BURKE, J.	ME	TCBA	-	-	-	-	-	-	-	-	-	-	1.000	1	1	0	0	0	0
WINTER, G.	ME	TCBA	3.3	2.48	1.91	36.0	8.9	6.8	1.9	2.8	.17	21.4	.207	640	159	1	5	0	0
HAHN, N.	ME	TCBA	3.7	2.81	2.21	35.7	9.1	7.3	1.6	2.6	.09	31.8	.221	1244	318	3	8	2	3
BRIGGS, B.	ME	TCBA	4.2	3.16	2.22	36.1	9.1	6.4	2.2	4.3	.12	29.6	.197	1188	298	3	15	1	0
FRASER, C.	ME	TCBA	4.5	3.31	2.45	37.2	10.3	7.3	2.7	3.5	.10	20.3	.224	1123	312	7	7	8	1
PUTTMANN, A.	ME	TCBA	.2	3.47	2.92	37.2	11.9	6.9	4.9	4.4	.00	1.1	.230	204	65	2	0	1	0
MCFARLAND, C.	ME	TCBA	3.2	3.48	3.09	37.5	11.2	9.3	1.6	4.8	.19	.7	.264	981	294	1	10	3	0
MOREN, L.	ME	TCBA	.8	9.28	5.06	43.0	14.3	11.0	3.4	2.5	.84	-2.3	.277	51	17	0	0	0	1
REIDY, B.	ME	TCBA	2.8	6.80	6.42	42.3	15.7	13.2	2.3	3.0	.76	-17.5	.340	224	83	0	1	1	0
Keefer, A.	ME	TCBA	.0	20.25	6.75	57.4	27.0	27.0	.0	6.8	.00	-1.1	.471	17	8	0	0	0	0
Mexicali Mallards			3.6	3.30	2.57	36.8	10.1	7.7	2.1	3.6	.15	84.0	.229	5673	1555	17	46	16	5



CHARLES FRASER
PITCHER OF THE PHILADELPHIA OR. L.J. GLEN

Noodles Hahn (22-11, 2.21) and Buttons Briggs (20-13, 2.22) were the big winners for the Mallards, but the big story was Grade 5 (D) Chick Fraser. Until finally tiring, late in the season, Chick was 16-6 with an ERA of 1.78 and five shutouts, before going 0-5 in his last six starts of the campaign. As Chick went, so did Mexicali, who faltered to a 3rd place finish in the rugged McCorkindale Division, despite finishing 25 games over 500. Chappie McFarland was also an inning eater for Mexicali, winning 13 games.

ISLANDERS

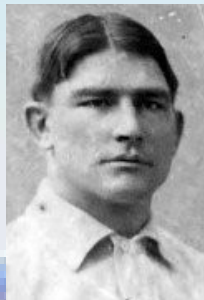


BASEBALL



Long Island Islanders Draft Picks

1-Bugs Raymond 2-Tom Needham 3-Rube Vinson 4-Jesse Stovall 5-Tom Dougherty

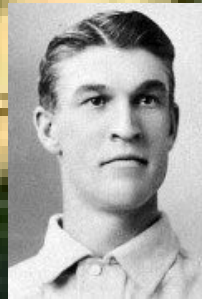
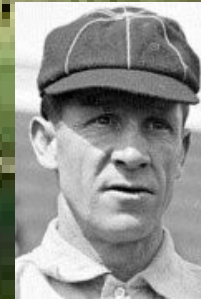


Long Island



**Opening Day Starting Lineup
Long Island Islanders**

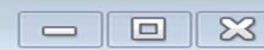
**1-Roy Thomas, CF 2-Billy Lush, LF 3-Elmer Flick, RF
4-Jimmy Collins, 3B 5-John Ganzel, 1B 6-Kid Gleason, 2B
7-Eddie Abbaticchio SS 8-Frank Bowerman, C 9-Doc White, P**



24 Players	Tm	Lg	AVG	G	AB	R	H	2B	3B	HR	TB	RBI	SO	BB	ASB	SB	CS
RAYMOND, B.	LI	TCBA	.333	18	3	1	1	0	0	0	1	0	1	0	0	0	0
BROWNE, G.	LI	TCBA	.320	104	291	48	93	13	3	2	118	42	15	12	14	12	2
FLICK, E.	LI	TCBA	.306	149	599	96	183	35	12	5	257	93	60	45	44	25	19
NEEDHAM, T.	LI	TCBA	.296	60	125	12	37	2	1	1	44	23	11	10	1	1	0
THOMAS, R.	LI	TCBA	.291	140	505	110	147	4	5	1	164	36	50	96	39	30	9
COLLINS, J.	LI	TCBA	.291	154	626	89	182	34	10	3	245	118	46	41	26	14	12
GANZEL, J.	LI	TCBA	.283	132	470	59	133	14	11	5	184	87	44	23	7	5	2
GLEASON, K.	LI	TCBA	.269	153	584	62	157	21	7	0	192	69	51	36	19	11	8
LUNDGREN, C.	LI	TCBA	.267	35	75	12	20	4	2	0	28	5	7	5	1	1	0
STREET, G.	LI	TCBA	.263	34	19	7	5	3	0	0	8	5	2	2	2	2	0
LUSH, B.	LI	TCBA	.257	134	447	89	115	11	9	0	144	46	48	91	24	13	11
McEaney, J.	LI	TCBA	.250	54	96	9	24	3	0	2	33	11	16	7	0	0	0
CORCORAN, T.	LI	TCBA	.234	140	432	55	101	18	5	3	138	62	59	19	12	7	5
POWERS, M.	LI	TCBA	.233	95	180	18	42	7	0	0	49	17	26	8	0	0	0
VINSON, R.	LI	TCBA	.224	56	49	10	11	0	0	0	11	8	7	13	0	0	0
ABBATICCHIO, E.	LI	TCBA	.213	106	254	41	54	8	6	1	77	33	26	19	15	11	4
BOWERMAN, F.	LI	TCBA	.191	106	246	28	47	9	3	0	62	22	43	14	10	9	1
SPARKS, T.	LI	TCBA	.188	38	32	5	6	0	0	0	6	3	10	3	0	0	0
EWING, B.	LI	TCBA	.178	34	73	7	13	4	2	1	24	7	6	5	1	1	0
CRONIN, J.	LI	TCBA	.155	43	71	6	11	1	0	0	12	6	13	4	0	0	0
STOVALL, J.	LI	TCBA	.143	26	7	2	1	0	0	0	1	1	1	0	1	1	0
KELLUM, W.	LI	TCBA	.141	40	78	12	11	3	0	0	14	6	17	7	4	4	0
WHITE, D.	LI	TCBA	.104	32	77	9	8	1	0	0	9	4	12	11	2	1	1
DOUGHERTY, T.	LI	TCBA	-	6	0	0	0	0	0	0	0	0	0	0	0	0	0
Long Island Islanders			.263	1889	5339	787	1402	195	76	24	1821	704	571	471	222	148	74

Roy Thomas drew 96 walks, helping him score 110 times for LI. Jimmy Collins had 118 RBI. Elmer Flick hit .306 with 96 runs and 93 RBI. Billy Lush scored 89 runs. John Ganzel knocked in 87 Islanders with 5 HRs, matching Flick's team leading total (Elmer led the team with 35 doubles, 12 triples and 183 hits too – the "Cycle" if you will. George Browne had the highest average (.320) for any player, and was one of ten Islanders to appear in 100 or more games.





11 Pitchers	Tm	Lg	W	L	PCT	SV	ERA	G	GS	CG	SHO	QS	IP	H	R	ER	HR	SO	BB
KELLUM, W.	LI	TCBA	18	11	.621	3	1.98	40	27	15	5	19	250.1	192	69	55	0	68	50
LUNDGREN, C.	LI	TCBA	21	7	.750	1	2.25	35	31	17	1	24	259.2	180	83	65	2	146	63
SPARKS, T.	LI	TCBA	12	1	.923	7	2.49	38	8	6	1	3	119.1	100	38	33	1	25	32
CRONIN, J.	LI	TCBA	19	9	.679	5	2.92	43	27	16	5	16	237.2	207	93	77	7	113	67
RAYMOND, B.	LI	TCBA	2	1	.667	2	2.92	18	1	1	0	1	24.2	29	9	8	0	14	10
EWING, B.	LI	TCBA	16	10	.615	1	3.16	34	29	11	3	17	219.0	199	84	77	1	103	70
WHITE, D.	LI	TCBA	13	11	.542	0	3.20	32	31	14	3	18	230.2	193	100	82	6	107	103
STOVALL, J.	LI	TCBA	0	3	.000	1	6.68	22	0	0	0	0	32.1	47	29	24	1	13	17
DOUGHERTY, T.	LI	TCBA	0	0	-	2	11.57	6	0	0	0	0	4.2	10	6	6	1	2	1
McEaney, J.	LI	TCBA	0	0	-	0	11.81	7	0	0	0	0	10.2	30	17	14	0	4	4
CORCORAN, T.	LI	TCBA	0	0	-	0	18.00	2	0	0	0	0	3.0	10	8	6	1	0	2
Long Island Islanders			101	53	.656	22	2.89	277	154	80	18	98	1392.0	1197	536	447	20	595	419

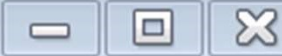
11 Pitchers	Tm	Lg	SUP/9	R/9	ERA	BF/9	BR/9	H/9	BB/9	SO/9	HR/9	ERPT	OBA	BF	BR	IBB	HB	WP	BK
KELLUM, W.	LI	TCBA	3.4	2.48	1.98	35.3	8.9	6.9	1.6	2.4	.00	31.8	.213	983	247	5	10	0	1
LUNDGREN, C.	LI	TCBA	4.4	2.88	2.25	35.6	8.6	6.2	2.1	5.1	.07	25.1	.193	1027	249	2	8	2	0
SPARKS, T.	LI	TCBA	4.9	2.87	2.49	36.4	10.1	7.5	2.4	1.9	.08	8.4	.228	483	134	0	2	0	0
CRONIN, J.	LI	TCBA	4.5	3.52	2.92	37.1	10.6	7.8	2.5	4.3	.27	5.4	.232	981	279	1	6	1	0
RAYMOND, B.	LI	TCBA	2.6	3.28	2.92	40.5	14.2	10.6	3.6	5.1	.00	.6	.299	111	39	0	0	0	0
EWING, B.	LI	TCBA	4.4	3.45	3.16	37.6	11.3	8.2	2.8	4.2	.04	-1.0	.242	916	275	1	7	4	2
WHITE, D.	LI	TCBA	5.7	3.90	3.20	38.6	12.0	7.5	4.0	4.2	.23	-2.0	.227	990	307	0	11	0	0
STOVALL, J.	LI	TCBA	.0	8.07	6.68	43.7	18.1	13.1	4.7	3.6	.28	-12.8	.348	157	65	0	1	0	0
DOUGHERTY, T.	LI	TCBA	.0	11.57	11.57	48.2	21.2	19.3	1.9	3.9	1.93	-4.4	.435	25	11	0	0	0	0
McEaney, J.	LI	TCBA	.0	14.34	11.81	54.8	28.7	25.3	3.4	3.4	.00	-10.3	.500	65	34	0	0	0	0
CORCORAN, T.	LI	TCBA	.0	24.00	18.00	69.0	36.0	30.0	6.0	.0	3.00	-5.0	.500	23	12	0	0	0	0
Long Island Islanders			4.3	3.47	2.89	37.2	10.7	7.7	2.7	3.8	.13	35.8	.231	5761	1652	9	45	7	3



LI had six pitchers win 10 or more games, and 4 strike out 100 or more hitters. But none had more than Carl Lundgren (21 wins, 146 k's). Jack Cronin finished at 19-9 while Tully Sparks was an impressive 12-1 with 7 saves for the Don Mahley Division champions, who had Origins best record



U-TCB905 - TCBA Origins 1904 ML...



TCBA Origins

Mahley Division

	W	L	PCT	GB
Long Island Islanders	101	53	.656	-
South Starrucca Ainspans	91	63	.591	10.0
Boston Beaneaters	74	80	.481	27.0
Hyde Park Vitamen	64	90	.416	37.0

McCorkindale Division

Bradenton Buckeyes	97	57	.630	-
Bergen Barflies	91	62	.595	5.5
Mexicali Mallards	89	64	.582	7.5
Cleveland Naps	84	70	.545	13.0

Kirwin Division

Newton Buccs	88	65	.575	-
Waukesha Freeman	74	80	.481	14.5
Grand Rapids Wolverines	58	96	.377	30.5
Mimosa Mirthmakers	52	101	.340	36.0

Seitz Division

Turin Mountaineers	88	66	.571	-
Wilderness Wraiths	78	76	.506	10.0
Hereford Highlanders	66	88	.429	22.0
Buffalo Mules	35	119	.227	53.0

FINAL STANDINGS

1905

2:57 PM

U-TCB905 | TCBA Origins 1904 MLB

16 Teams	AVG	OBP	SLG	G	AB	H	2B	3B	HR	R	R/G	SO	BB	LOB	SB	CS	SBP
Long Island Islanders	.263	.325	.341	154	5339	1402	195	76	24	787	5.1	571	471	1142	148	74	66.7
South Starrucca Ainspans	.262	.317	.351	154	5367	1408	226	75	34	731	4.7	598	401	1109	121	50	70.8
Bergen Barflies	.259	.309	.354	153	5383	1395	236	96	27	720	4.7	667	367	1115	106	39	73.1
Bradenton Buckeyes	.252	.310	.322	154	5328	1341	226	53	15	748	4.9	654	403	1057	161	67	70.6
Boston Beaneaters	.248	.312	.305	154	5367	1330	161	60	8	642	4.2	614	469	1179	181	78	69.9
Hereford Highlanders	.248	.311	.318	154	5363	1329	211	47	24	654	4.2	711	462	1174	133	52	71.9
Turin Mountaineers	.247	.307	.330	154	5288	1308	222	72	23	679	4.4	669	408	1114	165	52	76.0
Mimosa Mirthmakers	.244	.301	.308	153	5222	1274	188	62	8	627	4.1	671	383	1084	121	39	75.6
Mexicali Mallards	.244	.294	.325	153	5313	1296	242	62	21	630	4.1	621	342	1079	157	60	72.4
Wilderness Wraiths	.243	.305	.305	154	5298	1288	172	64	9	668	4.3	675	450	1109	110	45	71.0
Grand Rapids Wolverines	.240	.289	.321	154	5384	1291	202	92	17	645	4.2	622	320	1041	126	42	75.0
Waukesha Freeman	.239	.300	.314	154	5333	1277	214	62	20	623	4.0	671	394	1115	133	40	76.9
Newton Buccs	.239	.300	.316	153	5166	1237	180	65	28	662	4.3	622	411	1027	190	77	71.2
Cleveland Naps	.233	.287	.293	154	5295	1236	158	60	12	624	4.1	636	367	1012	151	83	64.5
Hyde Park Vitamen	.233	.290	.290	154	5208	1213	168	50	9	600	3.9	654	387	1034	139	58	70.6
Buffalo Mules	.207	.259	.267	154	5168	1069	162	51	16	426	2.8	629	347	1032	107	30	78.1
TCBA Origins	.244	.301	.316	1230	84822	20694	3163	1047	295	10466	8.5	10285	6382	17423	2249	886	71.7

The 10 players with the highest Batting Average

Name	Tm	Lg	AVG	PA
LAJOIE, N.	BR	TCBA	.402	602
KEELER, W.	WW	TCBA	.374	628
BECKLEY, J.	BR	TCBA	.335	603
SEYMOUR, C.	BR	TCBA	.333	581
CHANCE, F.	ME	TCBA	.324	497
WAGNER, H.	WA	TCBA	.321	595
SEYBOLD, S.	BE	TCBA	.319	597
BRADLEY, B.	TU	TCBA	.307	648
CROSS, L.	WA	TCBA	.307	657
FLICK, E.	LI	TCBA	.306	653

The 10 players with the highest Slugging Average

Name	Tm	Lg	SLG	PA
LAJOIE, N.	BR	TCBA	.546	602
WAGNER, H.	WA	TCBA	.468	595
SEYMOUR, C.	BR	TCBA	.467	581
KEELER, W.	WW	TCBA	.466	628
MURPHY, D.	SO	TCBA	.456	616
STAHL, C.	ME	TCBA	.446	644
LUMLEY, H.	TU	TCBA	.440	643
FLICK, E.	LI	TCBA	.429	653
HICKMAN, C.	BE	TCBA	.428	523
MCCORMICK, M.	ME	TCBA	.423	495

The 10 players with the highest On Base Percentage

Name	Tm	Lg	OBP	PA
LAJOIE, N.	BR	TCBA	.449	602
THOMAS, R.	LI	TCBA	.406	610
KEELER, W.	WW	TCBA	.401	628
WAGNER, H.	WA	TCBA	.395	595
CHANCE, F.	ME	TCBA	.388	497
LUSH, B.	LI	TCBA	.386	557
BECKLEY, J.	BR	TCBA	.383	603
ELBERFELD, K.	BR	TCBA	.376	502
STAHL, C.	ME	TCBA	.375	644
HUGGINS, M.	WA	TCBA	.373	645

The 10 players with the most Runs Created

Name	Tm	Lg	RC	PA
LAJOIE, N.	BR	TCBA	136.1	602
KEELER, W.	WW	TCBA	110.3	628
WAGNER, H.	WA	TCBA	102.0	595
STAHL, C.	ME	TCBA	100.2	644
SEYMOUR, C.	BR	TCBA	95.4	581
BRADLEY, B.	TU	TCBA	93.1	648
LUMLEY, H.	TU	TCBA	90.5	643
BURKETT, J.	HH	TCBA	90.1	680
BECKLEY, J.	BR	TCBA	89.0	603
FLICK, E.	LI	TCBA	88.3	653

The 10 players with the most Runs Scored

Name	Tm	Lg	R	PA
LAJOIE, N.	BR	TCBA	125	602
LUMLEY, H.	TU	TCBA	114	643
HUGGINS, M.	WA	TCBA	114	645
THOMAS, R.	LI	TCBA	110	610
GREEN, D.	SO	TCBA	106	624
BURKETT, J.	HH	TCBA	106	680
SELBACH, K.	BE	TCBA	106	691
KEELER, W.	WW	TCBA	101	628
STAHL, C.	ME	TCBA	100	644
MCGANN, D.	NB	TCBA	99	574

The 10 players with the most Runs Batted In

Name	Tm	Lg	RBI	PA
COLLINS, J.	LI	TCBA	118	689
SEYMOUR, C.	BR	TCBA	113	581
MURPHY, D.	SO	TCBA	109	616
CROSS, L.	WA	TCBA	106	657
BECKLEY, J.	BR	TCBA	104	603
KEELER, W.	WW	TCBA	101	628
SMOOTH, H.	BR	TCBA	99	577
WILLIAMS, J.	ME	TCBA	99	612
MERTES, S.	NB	TCBA	94	594
FLICK, E.	LI	TCBA	93	653

The 10 players with the most Hits

Name	Tm	Lg	H	PA
LAJOIE, N.	BR	TCBA	218	602
KEELER, W.	WW	TCBA	213	628
CROSS, L.	WA	TCBA	187	657
BEAUMONT, G.	NB	TCBA	187	674
BECKLEY, J.	BR	TCBA	183	603
FLICK, E.	LI	TCBA	183	653
BRADLEY, B.	TU	TCBA	182	648
COLLINS, J.	LI	TCBA	182	689
BURKETT, J.	HH	TCBA	181	680
SEYMOUR, C.	BR	TCBA	177	581

The 10 players with the most Doubles

Name	Tm	Lg	2B	PA
LAJOIE, N.	BR	TCBA	58	602
CROSS, L.	WA	TCBA	44	657
LUSH, J.	HH	TCBA	39	377
HEYDON, M.	TU	TCBA	39	385
WAGNER, H.	WA	TCBA	39	595
STAHL, C.	ME	TCBA	39	644
SEYMOUR, C.	BR	TCBA	37	581
WILLIAMS, J.	ME	TCBA	37	612
TITUS, J.	BS	TCBA	36	594
DAHLEN, B.	GW	TCBA	36	624

3:13 PM U-TCB905 TCBA Origins 1904 MLB

The 10 players with the most Triples

Name	Tm	Lg	3B	PA
MURPHY, D.	SO	TCBA	21	616
CASSIDY, J.	WW	TCBA	20	646
KELLEY, J.	WW	TCBA	19	527
CRAWFORD, S.	GW	TCBA	19	644
WAGNER, H.	WA	TCBA	16	595
LEACH, T.	BS	TCBA	15	643
STAHL, C.	ME	TCBA	15	644
BRAIN, D.	BE	TCBA	14	523
SEYMOUR, C.	BR	TCBA	14	581
STAHL, J.	WA	TCBA	14	599

The 11 players with the most Home Runs

Name	Tm	Lg	HR	PA
LUMLEY, H.	TU	TCBA	16	643
DAVIS, H.	HH	TCBA	12	377
FREEMAN, B.	GW	TCBA	12	673
BRAIN, D.	BE	TCBA	9	523
MCGANN, D.	NB	TCBA	9	574
MURPHY, D.	SO	TCBA	8	616
DOOIN, R.	SO	TCBA	7	225
Sajdak, K.	WA	TCBA	7	474
HICKMAN, C.	BE	TCBA	7	523
2 players tied at 6				

The 10 players with the most Walks

Name	Tm	Lg	BB	PA
THOMAS, R.	LI	TCBA	96	610
LUSH, B.	LI	TCBA	91	557
HUGGINS, M.	WA	TCBA	86	645
RITCHEY, C.	MI	TCBA	78	647
DIEHL, E.	BR	TCBA	75	530
SELBACH, K.	BE	TCBA	74	691
STAHL, C.	ME	TCBA	72	644
GREEN, D.	SO	TCBA	69	624
BARRETT, J.	HP	TCBA	67	661
HARTSEL, T.	BS	TCBA	66	657

The 10 players with the most Strikeouts

Name	Tm	Lg	SO	PA
Wood, W.	BR	TCBA	111	621
CROSS, M.	ME	TCBA	97	612
CASSIDY, J.	WW	TCBA	92	646
Sajdak, K.	WA	TCBA	87	474
CARR, C.	GW	TCBA	86	588
PICKERING, O.	HH	TCBA	82	635
HULSWITT, R.	BE	TCBA	81	506
DONOVAN, P.	MI	TCBA	81	516
FERRIS, H.	NB	TCBA	81	611
CANNELL, R.	WW	TCBA	80	622

3:14 PM U-TCB905 TCBA Origins 1904 MLB

Hit Leaders

The 10 players with the most Stolen Bases

Name	Tm	Lg	SB	ASB
CHANCE, F.	ME	TCBA	43	55
TINKER, J.	NB	TCBA	41	58
HEIDRICK, E.	TU	TCBA	38	43
MCGANN, D.	NB	TCBA	36	46
STAHL, J.	WA	TCBA	35	40
BEAUMONT, G.	NB	TCBA	35	43
SHANNON, S.	HP	TCBA	35	48
DAVIS, G.	BU	TCBA	34	40
GREEN, D.	SO	TCBA	33	38
LUMLEY, H.	TU	TCBA	33	44

3:18 PM U-TCB905 TCBA Origins 1904 MLB



16 Teams	ERA	G	CG	SHO	QS	SV	IP	H	R	ER	HR	SO	BB	HB	WP	BK	OBA
Bergen Barflies	2.33	153	99	17	92	8	1384.2	1152	550	359	14	622	349	48	20	0	.221
Cleveland Naps	2.47	154	108	20	98	3	1418.2	1160	526	390	13	656	321	57	25	0	.220
Mexicali Mallards	2.57	153	110	18	93	7	1388.0	1181	509	397	23	560	345	46	16	5	.229
Turin Mountaineers	2.66	154	96	19	91	13	1382.1	1165	540	408	17	604	352	55	18	2	.225
Wilderness Wraiths	2.67	154	116	14	80	3	1389.2	1157	600	412	18	662	389	51	19	2	.223
South Starrucca Ainspans	2.72	154	91	15	74	18	1389.0	1244	606	420	16	553	334	50	27	1	.234
Long Island Islanders	2.89	154	80	18	98	22	1392.0	1197	536	447	20	595	419	45	7	3	.231
Boston Beaneaters	2.92	154	116	13	88	7	1405.0	1242	629	456	18	634	343	67	21	0	.232
Bradenton Buckeyes	2.96	154	92	16	85	26	1404.2	1217	620	462	20	655	432	66	28	3	.230
Newton Buccs	3.04	153	123	20	84	8	1375.0	1171	581	464	14	703	378	45	30	1	.228
Waukesha Freeman	3.15	154	115	6	81	7	1395.2	1214	661	488	15	732	424	55	23	4	.232
Hyde Park Vitamen	3.48	154	97	11	73	10	1374.1	1457	699	532	10	578	394	66	33	4	.270
Hereford Highlanders	3.58	154	116	6	62	5	1378.1	1385	753	549	18	781	423	49	32	1	.256
Mimosa Mirthmakers	4.12	153	114	3	47	4	1354.2	1529	865	620	39	616	490	70	24	3	.282
Grand Rapids Wolverines	4.21	154	95	6	55	4	1384.0	1552	853	647	19	564	568	56	32	4	.282
Buffalo Mules	4.24	154	123	10	47	5	1356.0	1671	938	639	21	770	421	59	20	3	.297
TCBA Origins	3.12	1230	1691	212	1248	150	22172.0	20694	10466	7690	295	10285	6382	885	375	36	.244

1905 Pitching

The 10 players with the best Wins - Losses

Name	Tm	Lg	W - L	PCT
CHESBRO, J.	BE	TCBA	29-16	.644
OWEN, F.	SO	TCBA	27-9	.750
WADDELL, R.	NB	TCBA	27-16	.628
TANNEHILL, J.	TU	TCBA	26-11	.703
YOUNG, C.	SO	TCBA	26-14	.650
FLAHERTY, P.	NB	TCBA	25-11	.694
PELTY, B.	HP	TCBA	25-17	.595
TAYLOR, D.	BR	TCBA	24-10	.706
HENLEY, W.	BR	TCBA	24-13	.649
MCGINNITY, J.	WW	TCBA	24-13	.649

The 10 players with the lowest Earned Run Average

Name	Tm	Lg	ERA	IP
MCGINNITY, J.	WW	TCBA	1.39	362.0
SMITH, F.	WW	TCBA	1.61	235.0
YOUNG, C.	SO	TCBA	1.64	352.0
TAYLOR, J.	CL	TCBA	1.75	360.1
OWEN, F.	SO	TCBA	1.80	310.1
CHESBRO, J.	BE	TCBA	1.90	378.2
TANNEHILL, J.	TU	TCBA	1.91	330.1
WINTER, G.	ME	TCBA	1.91	160.0
BROWN, T.	BE	TCBA	1.94	236.1
CASE, C.	TU	TCBA	1.94	166.2



CHESBRO, N. Y. AMER.



OWEN, CHICAGO AMER.



Waddell - St. Louis Am.



3:11 PM U-TCB905 TCBA Origins 1904 MLB

The 10 players with the most Strikeouts

Name	Tm	Lg	SO	IP
WADDELL, R.	NB	TCBA	285	361.1
MATHEWSON, C.	CL	TCBA	227	369.0
WILLIS, V.	HH	TCBA	212	321.2
WEIMER, J.	WA	TCBA	194	321.2
PLANK, E.	TU	TCBA	190	363.0
BENDER, C.	BU	TCBA	186	220.1
CHESBRO, J.	BE	TCBA	180	378.2
YOUNG, C.	SO	TCBA	177	352.0
PITTINGER, T.	WA	TCBA	169	306.1
NICHOLS, K.	BS	TCBA	165	341.1

The 10 players with the lowest Baserunners Per 9 Innings, Starting



WADDELL, p.
St. Louis "BROWNS" American B. B. League.
BY W. H. BARNSTON 1918 CASE CO. ST. LOUIS



"CHRISTY" MATHEWSON, N. Y. Nat'l



Leaders

16 Teams	FLD	G	PO	A	E	DP	TP	PB	OSB	OCS	OSBP	OSBA	DER	UER	UERP
Long Island Islanders	.976	154	4176	2022	154	117	0	18	108	58	65.1	.698	.724	89	16.6
Mexicali Mallards	.974	153	4164	1994	167	105	0	10	102	69	59.6	.661	.727	112	22.0
Newton Buccs	.970	153	4125	1773	183	100	0	19	121	56	68.4	.792	.715	117	20.1
Cleveland Naps	.967	154	4256	1917	209	95	0	11	122	56	68.5	.774	.725	136	25.9
Hyde Park Vitamen	.967	154	4123	2036	209	127	0	26	125	59	67.9	.819	.675	167	23.9
Turin Mountaineers	.966	154	4147	1905	214	97	0	23	131	48	73.2	.853	.722	132	24.4
Bradenton Buckeyes	.964	154	4214	1914	228	104	0	19	140	48	74.5	.897	.713	158	25.5
Boston Beaneaters	.963	154	4215	1900	233	79	0	11	123	41	75.0	.788	.712	173	27.5
Waukesha Freeman	.963	154	4187	1884	233	91	0	25	177	67	72.5	1.141	.705	173	26.2
Grand Rapids Wolverines	.963	154	4152	2106	242	159	0	23	150	50	75.0	.975	.661	206	24.2
South Starrucca Ainspans	.963	154	4167	1961	237	91	0	23	110	60	64.7	.713	.711	186	30.7
Mimosa Mirthmakers	.958	153	4064	2073	268	130	0	21	164	60	73.2	1.090	.657	245	28.3
Hereford Highlanders	.956	154	4135	1753	272	93	0	23	169	57	74.8	1.104	.671	204	27.1
Bergen Barflies	.955	153	4154	1882	282	81	0	18	111	53	67.7	.721	.714	191	34.7
Wilderness Wraiths	.955	154	4169	1934	289	97	0	27	197	61	76.4	1.276	.712	188	31.3
Buffalo Mules	.951	154	4068	1820	303	118	0	32	199	43	82.2	1.321	.624	299	31.9
TCBA Origins	.963	1230	66516	30874	3723	1684	0	329	2249	886	71.7	.913	.697	2776	26.5



1905 Gold Glove Winners

2B-Dick Padden, GW
3B-Bill Bradley, TU
- Lee Tannehill, ME
SS-George Davis, BU
LF-Emmett Heidrick, TU
- Danny Green, SO
CF-Topsy Hartsel, BS

RF-Marty McIntyre, SO
-Sam Mertes, NB
-Jimmy Sebring, TU
1B-Candy LaChance, TU
C-Joe Sugden, BS
P-Three Finger Brown, BE



A close-up photograph of a baseball, showing its characteristic red stitching on a light-colored leather surface. The baseball is centered in the frame. Overlaid on the baseball is the text 'BASEBALL' in blue, blocky, outlined letters, and 'PLAYOFFS' in red, blocky, outlined letters below it. The text is positioned horizontally across the middle of the ball.

BASEBALL
PLAYOFFS

SEMI

FINAL

6 Games Played

Date	No.	Team	R	H	E	G Sc	Starters	Decisions	Save
10/06/04	6	Newton Buccs	1	7	2	60	R. WADDELL	L, R. WADDELL	
13:48m	6	Long Island Islanders	3	7	0	68	C. LUNDGREN	W, C. LUNDGREN	T. SPARKS
10/04/04	5	Long Island Islanders	7	9	2	59	D. WHITE	W, D. WHITE	None
17:48m	5	Newton Buccs	4	9	3	51	P. FLAHERTY	L, P. FLAHERTY	
10/03/04	4	Long Island Islanders	4	11	0	54	W. KELLUM	W, W. KELLUM	T. SPARKS
19:14m	4	Newton Buccs	2	10	1	52	R. WADDELL	L, R. WADDELL	
10/02/04	3	Long Island Islanders	1	5	1	57	B. EWING	L, B. EWING	
12:58m	3	Newton Buccs	4	6	1	71	S. LEEVER	W, S. LEEVER	F. CORRIDON
09/30/04	2	Newton Buccs	1	2	4	67	P. FLAHERTY	L, P. FLAHERTY	
10:17m	2	Long Island Islanders	3	5	3	87	D. WHITE	W, D. WHITE	None
09/29/04	1	Newton Buccs	5	8	2	65	R. WADDELL	W, R. WADDELL	None
15:46m	1	Long Island Islanders	3	7	1	56	C. LUNDGREN	L, C. LUNDGREN	



Newton held leads of 1-0 and 2-1, but Long Island rattled off three straight wins to advance to the World Series of 1905.

5 Games Played

Date	No.	Team	R	H	E	G Sc	Starters	Decisions	Save	
10/04/04	5	Bradenton Buckeyes	11	14	2	62	J. HARPER	W, J. HARPER	None	
14:39m	5	Turin Mountaineers	3	7	1	19	J. TANNEHILL	L, J. TANNEHILL		
Date	No.	Team	R	H	E	G Sc	Starters	Decisions	Save	
10/03/04	4	Bradenton Buckeyes	5	8	1	73	D. TAYLOR	W, D. TAYLOR	W. Wood	
14:04m	4	Turin Mountaineers	2	6	1	41	E. PLANK	L, E. PLANK		
Date	No.	Team	R	H	E	G Sc	Starters	Decisions	Save	
10/02/04	3	Bradenton Buckeyes	6	11	0	68	T. WALKER	W, T. WALKER	None	
12:56m	3	Turin Mountaineers	1	7	1	64	J. TANNEHILL	L, J. TANNEHILL		
Date	No.	Team	R	H	E	Inn	G Sc	Starters	Decisions	Save
09/30/04	2	Turin Mountaineers	4	8	4	13	83	C. ROBITAILLE	W, M. O'NEILL	None
22:24m	2	Bradenton Buckeyes	3	6	0		62	J. HARPER	L, R. AMES	
Date	No.	Team	R	H	E	G Sc	Starters	Decisions	Save	
09/29/04	1	Turin Mountaineers	3	10	0	57	J. TANNEHILL	L, E. PLANK		
21:37m	1	Bradenton Buckeyes	5	8	1	56	D. TAYLOR	W, D. TAYLOR	W. Wood	

Left handed starters Jesse Tannehill and Eddie Plank failed to stop the Buckeye bats in a rematch of the 1902 World Series. Nap LaJoie scored 8 runs and Cy Seymour drove in 7 runs to lead the Buckeyes to the World Series

1905



6 Games Played

Date	No.	Team	R	H	E	G Sc	Starters	Decisions	Save	
10/15/04	6	Bradenton Buckeyes	7	13	1	20	T. WALKER	L, R. AMES		
20:42m	6	Long Island Islanders	8	11	0	29	B. EWING	W, C. LUNDGREN	None	
Date	No.	Team	R	H	E	G Sc	Starters	Decisions	Save	
10/13/04	5	Long Island Islanders	0	2	0	54	D. WHITE	L, D. WHITE		
10:39m	5	Bradenton Buckeyes	3	5	1	86	J. HARPER	W, J. HARPER	None	
Date	No.	Team	R	H	E	G Sc	Starters	Decisions	Save	
10/12/04	4	Long Island Islanders	5	7	1	38	B. EWING	L, B. EWING		
18:33m	4	Bradenton Buckeyes	7	10	1	51	D. TAYLOR	W, D. TAYLOR	R. AMES	
Date	No.	Team	R	H	E	Inn	G Sc	Starters	Decisions	Save
10/11/04	3	Long Island Islanders	7	17	1	10	52	C. LUNDGREN	W, T. SPARKS	None
24:34m	3	Bradenton Buckeyes	6	8	0		34	T. WALKER	L, R. AMES	
Date	No.	Team	R	H	E	G Sc	Starters	Decisions	Save	
10/09/04	2	Bradenton Buckeyes	0	6	0	51	J. HARPER	L, J. HARPER		
12:32m	2	Long Island Islanders	5	9	1	80	D. WHITE	W, D. WHITE	None	
Date	No.	Team	R	H	E	G Sc	Starters	Decisions	Save	
10/08/04	1	Bradenton Buckeyes	1	4	3	63	D. TAYLOR	L, D. TAYLOR		
10:09m	1	Long Island Islanders	3	6	1	78	B. EWING	W, B. EWING	None	

10:46 AM

U-TCB905 | TCBA Origins 1904 MLB World Series

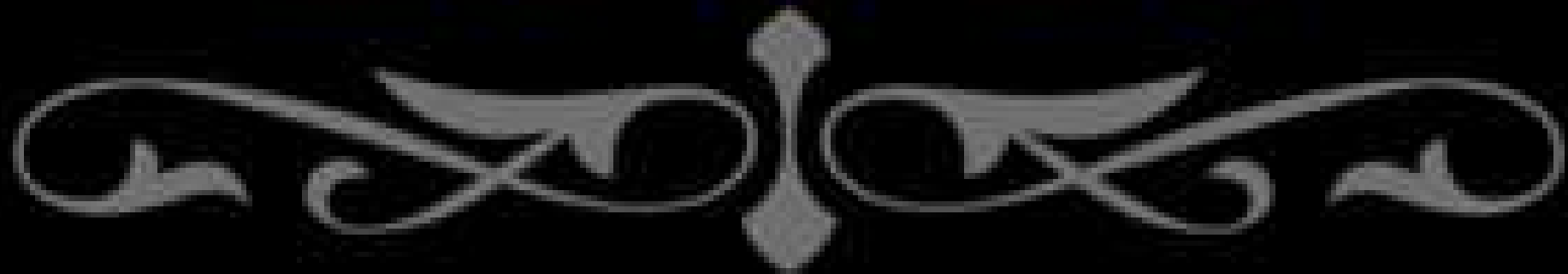


Long Island overcomes a 3-run 9th inning deficit to win Game 3 and take a 3-0 lead over Bradenton, then overcomes a 6-1 deficit to win Game Six and win their 2nd consecutive Championship



TCBA ORIGINS

19000s



- 1902 – Turin Mountaineers**
- 1903 – Cleveland Naps**
- 1904 – Long Island Islanders**
- 1905 – Long Island Islanders**
- 1906 –**
- 1907 –**
- 1908 –**
- 1909 –**



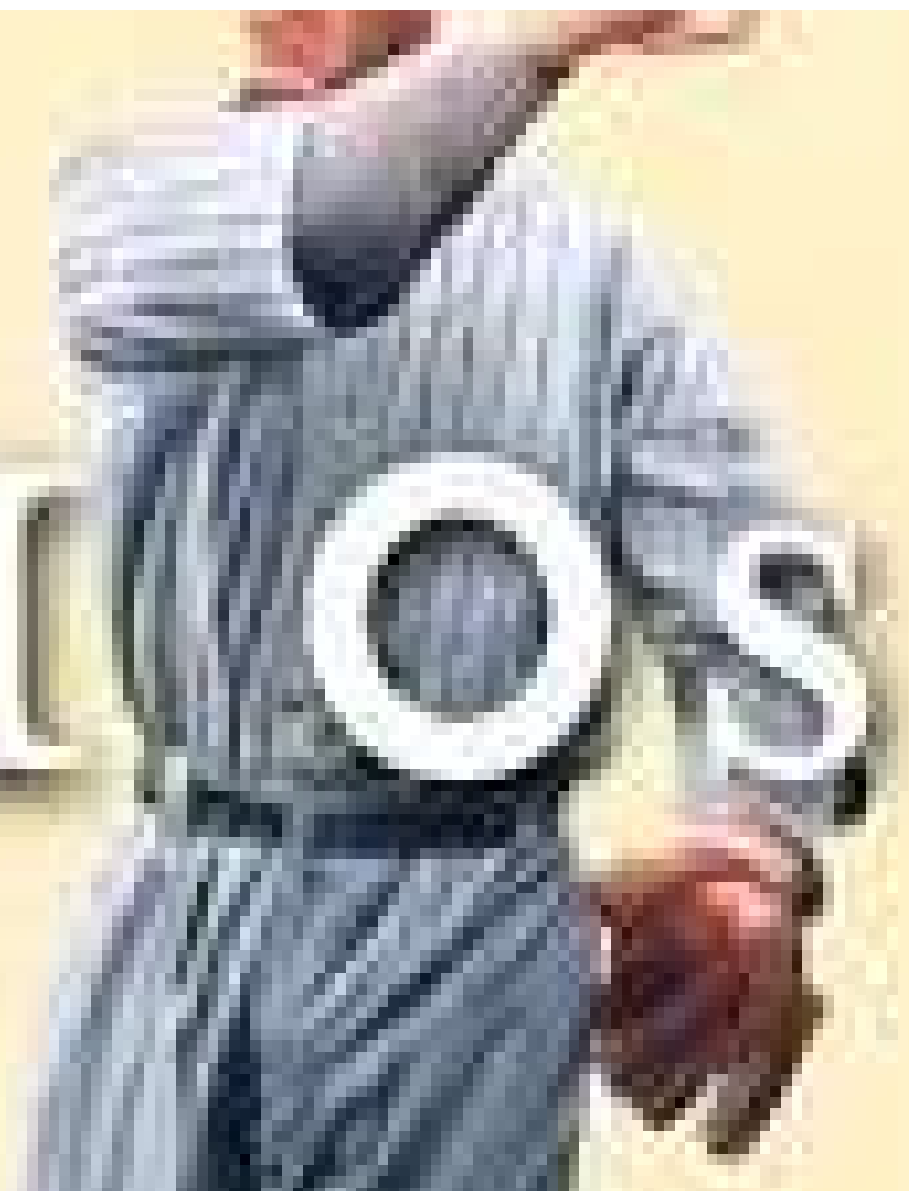
11

9

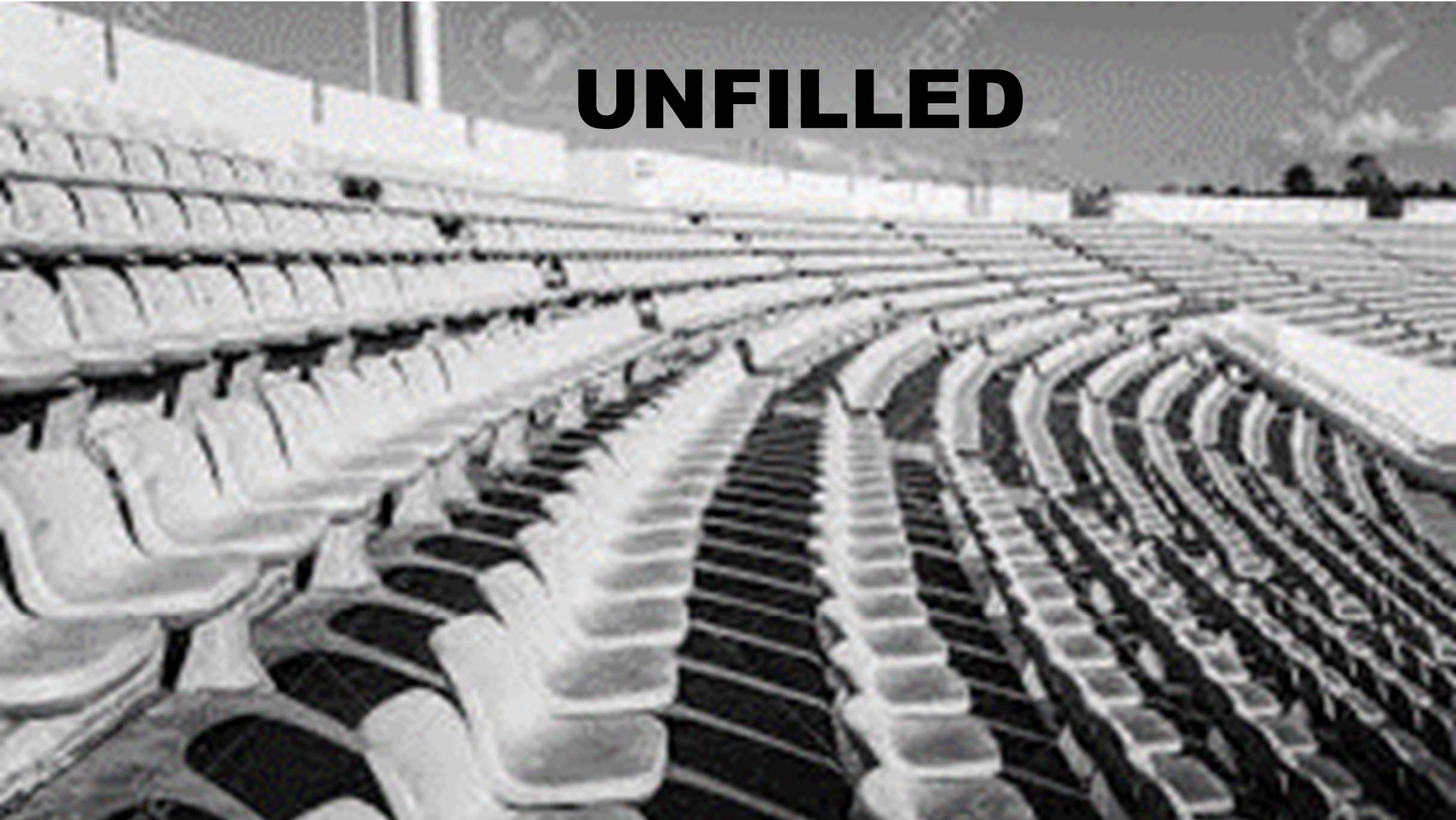
11

10

8



UNFILLED

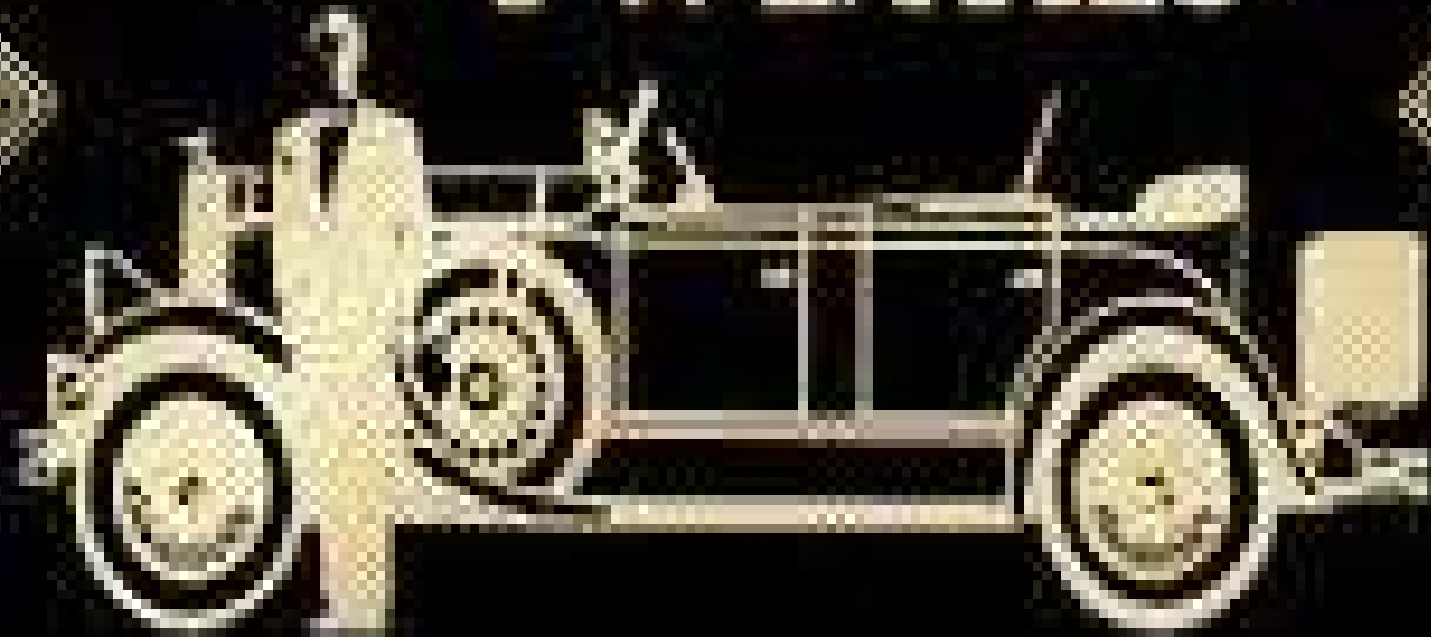




**TCBA GOLD
1921-1943**

The Roaring

TWENTIES





1921 – Long Island Islanders
1922 – Bergen Barflies
1923 – Siouxland Explorers
1924 – Bergen Barflies
1925 – Mimosa Mirthmakers
1926 – Fortney Gators
1927 – Bergen Barflies
1928 – Bergen Barflies
1929 – Long Island Islanders

MARSHALL ISLANDS

1930 ▶ DECADE OF THE GREAT DEPRESSION • 1939

THE 20TH CENTURY

60



ECONOMIC DEPRESSION ENGLUFS THE WORLD

1930s



1930 – Kilkenny Gaelics

1931 – Long Island Islanders

1932 – South Starrucca Ainspans

1933 – Portsmouth Pubdwellers

1934 – Hyde Park VitaMen

1935 – Mimosa Mirthmakers

1936 – Fortney Gators

1937 - South Starrucca Ainspans

1938 – Kilkenny Gaelics

1939 – South Starrucca Ainspans

1948

An aerial, black and white photograph of a baseball field during a game. The field is diamond-shaped with a pitcher's mound in the center. Several players are visible on the field, including one in the center of the diamond and others near the bases. The outfield is visible with some players positioned there. In the background, the stadium seating area is filled with spectators. There are several large signs or advertisements visible on the outfield fence, including one that says "NATIONAL" and another that says "AMERICAN".

1940 – Chesapeake Regnads
1941 – Bergen Barflies
1942 – Sacramento Solons
1943 – South Starrucca Ainspans



1944-1974

T C B A

YESTERDAY

“The best thing about baseball today is its yesterdays.” Lawrence Ritter

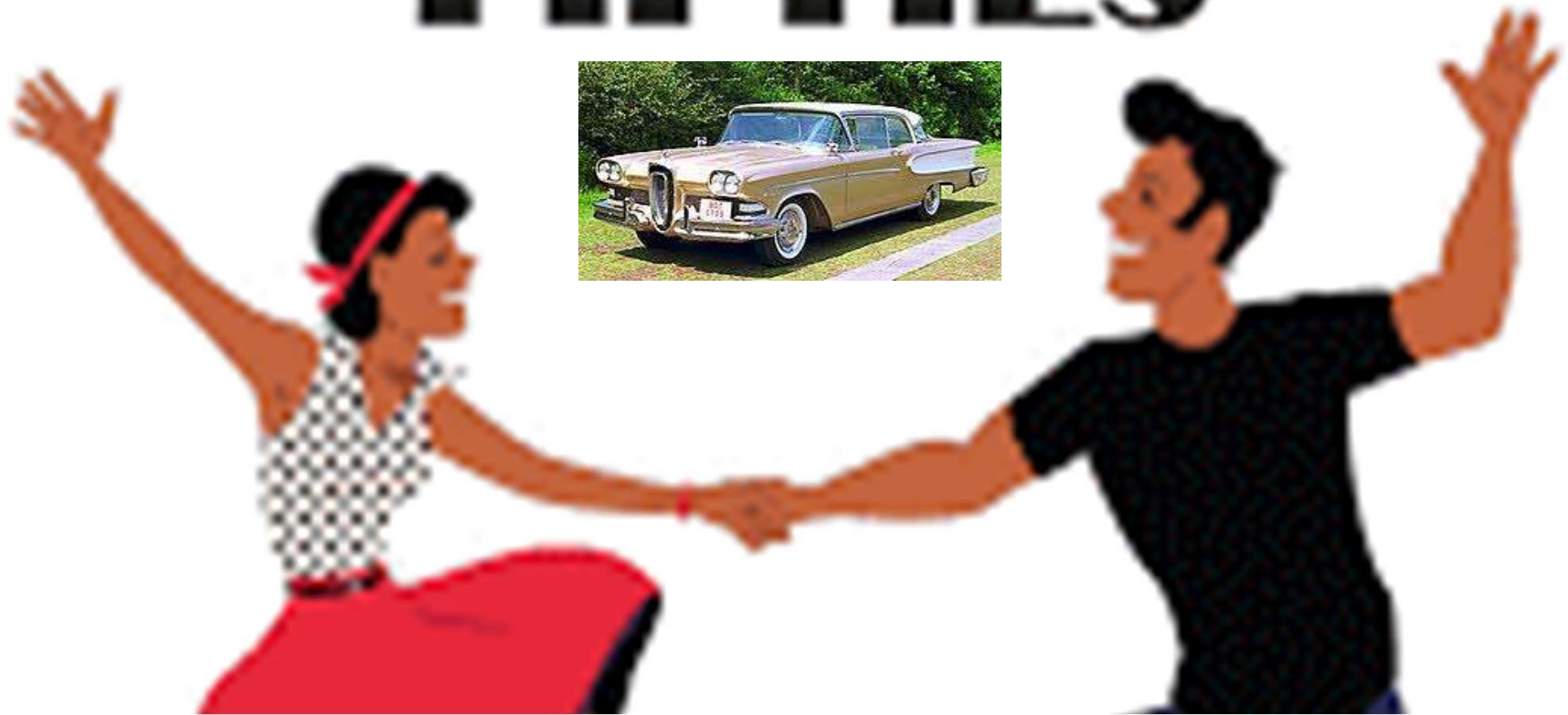
1940s





1944 – Long Island Islanders
1945 – Mexicali Mallards
1946 – Sacramento Solons
1947 – Mimosa Mirthmakers
1948 – Bradenton Buckeyes
1949 – Bradenton Buckeyes

THE FABULOUS FIFTIES





1950 – South Starrucca Ainspans
1951 – Mimosa Mirthmakers
1952 – Fortney Gators
1953 – Fortney Gators
1954 – South Starrucca Ainspans

1955 – Norfolk Pilots
1956 – Hyde Park VitaMen
1957 – Hyde Park VitaMen
1958 – Hyde Park VitaMen
1959 – Bradenton Buckeyes





- 1960 – Bradenton Buckeyes**
- 1961 – Wilderness Wraiths**
- 1962 – South Starrucca Ainspans**
- 1963 – South Starrucca Ainspans**
- 1964 – Mimosa Mirthmakers**
- 1965 – Bergen Barflies**
- 1966 – South Starrucca Ainspans**
- 1967 – South Starrucca Ainspans**
- 1968 – Long Island Islanders**
- 1969 – Cleveland Spiders**

ZOO

The image features the word "ZOO" in a large, bold, white, sans-serif font with a thick black outline. The letters are set against a vibrant, abstract background of overlapping shapes in shades of orange, yellow, and teal. The overall style is graphic and modern.

An aerial photograph of a baseball stadium, showing the green field, brown dirt base paths, and the surrounding seating areas filled with spectators. The stadium is surrounded by trees and a clear sky. Overlaid on the field is a list of five baseball teams and their respective years.

1970 – Fortney Gators
1971 – Newmarket Eh's
1972 – Hyde Park VitaMen
1973 – Long Island Islanders
1974 – Norfolk Pilots

TCBA



1975 - 2020





1975 – Harbor Beach Combers
1976 – Hyde Park Vitamen
1977 – Shiloh Spurs
1978 – Greylock Gators
1979 – Rockford Patriots

TIME

8

0

S



1980 – Norfolk Pilots

1981 – Winnebago Indians

1982 – Winnebago Indians

1983 – Long Island Islanders

1984 – Mimosa Mirthmakers

1985 – Long Island Islanders

1986 – Meadowlands Spartans

1987 – Long Island Islanders

1988 – Scranton Spanish Flies

1989 – Beacon Braves

1990s



1990 – Scranton Spanish Flies

1991 – Scranton Spanish Flies

1992 – Bethesda Bambinos

1993 – Scranton Spanish Flies

1994 – Scranton Spanish Flies


1995 – Horseshoe Bay Polos

1996 – Bethesda Bambinos

1997 – Rapidan Rapids

1998 – Newark Eagles

1999 – Newark Eagles



2000's



2000 – Long Island Islanders

2001 – Farmington Rats

2002 – Scranton Spanish Flies

2003 – Horseshoe Bay Polos

2004 – Newark Eagles

2005 – Pennsylvania Keystones

2006 – Farmington Rats

2007 – Long Island Islanders

2008 – Horseshoe Bay Polos

2009 – Silver Spring Senators



the
2010s

DECADE IN REVIEW



2010 – Scranton Spanish Flies **2015- Scranton Spanish Flies**
2011 – Fargo Fungoes **2016 – Rochester Cheetahs**
2012 – Bethesda Bambinos **2017 – Beacon Braves**
2013 – Bethesda Bambinos **2018 – Bethesda Bambinos**
2014 – Newark Eagles **2019 – Long Island Islanders**



The End