

streaks

The 12 players with the longest Hitting Streak Current

Name	Tm	Lg	G	PA
CRAWFORD, S.	GW	TCBA	13	660
TITUS, J.	WM	TCBA	10	549
COBB, T.	BU	TCBA	10	662
CHASE, H.	HP	TCBA	9	552
HARTSEL, T.	MI	TCBA	9	676
HARTZELL, R.	HP	TCBA	8	440
SEYMOUR, C.	BR	TCBA	8	545
CONGALTON, B.	CL	TCBA	8	553

4 players tied at 7

The 35 players with the longest Doubles Streak Current

Name	Tm	Lg	G	PA
MCGUIRE, D.	TU	TCBA	2	6
BERRY, C.	HP	TCBA	2	15
HUGHES, L.	SO	TCBA	2	100
O'BRIEN, P.	WM	TCBA	2	277
BIRMINGHAM, J.	WM	TCBA	2	473
Honeycutt, L.	WM	TCBA	2	540
HARTSEL, T.	MI	TCBA	2	676

28 players tied at 1

The 417 players with the longest Triples Streak Current

Name	Tm	Lg	G	PA
RICHE, L.	MI	TCBA	1	35
WILTSE, H.	BE	TCBA	1	80
CHESBRO, J.	BE	TCBA	1	88
ANDERSON, J.	MI	TCBA	1	340
MCLEAN, L.	TU	TCBA	1	390
Keefer, A.	ME	TCBA	1	433
SEYMOUR, C.	BR	TCBA	1	545
CRAWFORD, S.	GW	TCBA	1	660

409 players tied at 0

The 15 players with the longest Hitting Streak Season

Name	Tm	Lg	G	PA
NICHOLLS, S.	BU	TCBA	24	512
COBB, T.	BU	TCBA	18	662
BEAUMONT, G.	MI	TCBA	16	651
EVERS, J.	CL	TCBA	15	568
LAJOIE, N.	BR	TCBA	15	575
MALONEY, B.	PR	TCBA	15	634
DAVIS, H.	HH	TCBA	15	657

8 players tied at 14

The 37 players with the longest Doubles Streak Season

Name	Tm	Lg	G	PA
COLLINS, J.	HH	TCBA	5	586
ELBERFELD, K.	BR	TCBA	4	521
BRAIN, D.	MI	TCBA	4	555
WAGNER, H.	WA	TCBA	4	600
FERRIS, H.	PR	TCBA	4	632

32 players tied at 3

The 41 players with the longest Triples Streak Season

Name	Tm	Lg	G	PA
KNABE, O.	GW	TCBA	3	541
HANNIFIN, J.	TU	TCBA	3	592

39 players tied at 2

The 417 players with the longest Home Run Streak Current

Name	Tm	Lg	G	PA
MORAN, P.	HH	TCBA	1	246
HUMMEL, J.	TU	TCBA	1	529
DAVIS, H.	HH	TCBA	1	657

414 players tied at 0

The 45 players with the longest Extra Base Hit Streak Current

Name	Tm	Lg	G	PA
MCGUIRE, D.	TU	TCBA	3	6
O'BRIEN, P.	WM	TCBA	3	277
SEYMOUR, C.	BR	TCBA	3	545
BERRY, C.	HP	TCBA	2	15
HUGHES, L.	SO	TCBA	2	100
BIRMINGHAM, J.	WM	TCBA	2	473
Honeycutt, L.	WM	TCBA	2	540
GANZEL, J.	LI	TCBA	2	554
HARTSEL, T.	MI	TCBA	2	676

36 players tied at 1

The 13 players with the longest Walks Streak Current

Name	Tm	Lg	G	PA
JONES, F.	BU	TCBA	6	659
HUGGINS, M.	WA	TCBA	5	702
SCHLAFLY, H.	LI	TCBA	4	140
ISBELL, F.	WA	TCBA	3	557

9 players tied at 2

The 87 players with the longest Home Run Streak Season

Name	Tm	Lg	G	PA
WEIMER, J.	WA	TCBA	2	90
Braun, R.	HP	TCBA	2	232
MURRAY, R.	TU	TCBA	2	520
BRAIN, D.	MI	TCBA	2	555
Meade, L.	BE	TCBA	2	604

82 players tied at 1

The 17 players with the longest Extra Base Hit Streak Season

Name	Tm	Lg	G	PA
BRESNAHAN, R.	GW	TCBA	5	412
TITUS, J.	WM	TCBA	5	549
MAGEE, S.	BU	TCBA	5	577
COLLINS, J.	HH	TCBA	5	586

13 players tied at 4

The 18 players with the longest Walks Streak Season

Name	Tm	Lg	G	PA
JORDAN, T.	WA	TCBA	10	594
SCHLAFLY, H.	LI	TCBA	7	140
KONETCHY, E.	GW	TCBA	7	319
CHANCE, F.	ME	TCBA	7	449
CLARKE, F.	MI	TCBA	7	598
HARTSEL, T.	MI	TCBA	7	676

12 players tied at 6



The 10 players with the longest On Base Streak Current

Name	Tm	Lg	G	PA
DELAHANTY, J.	SO	TCBA	24	524
MILAN, C.	ME	TCBA	16	207
COBB, T.	BU	TCBA	16	662
HARTSEL, T.	MI	TCBA	16	676
STONE, G.	BE	TCBA	14	688
STEINFELDT, H.	CL	TCBA	13	619
CRAWFORD, S.	GW	TCBA	13	660
HARTZELL, R.	HP	TCBA	12	440
MOWREY, M.	SO	TCBA	10	512
TITUS, J.	WM	TCBA	10	549

The 10 players with the longest On Base Streak Season

Name	Tm	Lg	G	PA
HUGGINS, M.	WA	TCBA	30	702
JORDAN, T.	WA	TCBA	29	594
COBB, T.	BU	TCBA	27	662
DEVLIN, A.	GW	TCBA	26	632
STONE, G.	BE	TCBA	26	688
NICHOLLS, S.	BU	TCBA	24	512
DELAHANTY, J.	SO	TCBA	24	524
SLAGLE, J.	PR	TCBA	23	596
FLICK, E.	LI	TCBA	22	613
HAHN, E.	HH	TCBA	22	711

The 11 players with the longest Hitless Streak Current

Name	Tm	Lg	G	PA
Pio, P.	TU	TCBA	30	142
TANNEHILL, J.	TU	TCBA	11	31
BARTLEY, B.	BE	TCBA	9	15
LORD, B.	TU	TCBA	9	74
DYGERT, J.	MI	TCBA	8	117

6 players tied at 7

The 11 players with the longest Hitless Streak Season

Name	Tm	Lg	G	PA
Pio, P.	TU	TCBA	30	142
ATZ, J.	BR	TCBA	17	53
CASEY, D.	LI	TCBA	16	281
LORD, B.	TU	TCBA	15	74
BLAIR, W.	SO	TCBA	15	157
GRAHAM, O.	BU	TCBA	13	25
SPARKS, T.	LI	TCBA	13	105

4 players tied at 12

The 11 players with the longest No Home Run Streak Current

Name	Tm	Lg	G	PA
DOOLAN, M.	LT	TCBA	154	610
HAHN, E.	HH	TCBA	154	711
DONAHUE, J.	BR	TCBA	153	643
HEMPHILL, C.	CL	TCBA	153	694
HUGGINS, M.	WA	TCBA	153	702
BRIDWELL, A.	CL	TCBA	152	600
SULLIVAN, B.	HP	TCBA	150	576
TENNEY, F.	CL	TCBA	149	675
DAHLEN, B.	GW	TCBA	148	604

2 players tied at 147

The 11 players with the longest No Home Run Streak Season

Name	Tm	Lg	G	PA
DOOLAN, M.	LT	TCBA	154	610
HAHN, E.	HH	TCBA	154	711
DONAHUE, J.	BR	TCBA	153	643
HEMPHILL, C.	CL	TCBA	153	694
HUGGINS, M.	WA	TCBA	153	702
BRIDWELL, A.	CL	TCBA	152	600
SULLIVAN, B.	HP	TCBA	150	576
TENNEY, F.	CL	TCBA	149	675
DAHLEN, B.	GW	TCBA	148	604

2 players tied at 147

The 11 players with the longest No Strike Out Streak Current

Name	Tm	Lg	G	PA
CHADBOURNE, C.	HP	TCBA	14	31
LISTER, P.	HP	TCBA	14	76
KAY, B.	BR	TCBA	13	68
MCINTYRE, M.	SO	TCBA	11	92
CROSS, L.	WA	TCBA	11	223

6 players tied at 10

The 11 players with the longest No Strike Out Streak Season

Name	Tm	Lg	G	PA
KAY, B.	BR	TCBA	30	68
GANLEY, B.	GW	TCBA	27	680
MURPHY, D.	SO	TCBA	24	517
CONGALTON, B.	CL	TCBA	20	553
DOYLE, L.	SO	TCBA	19	209
MERKLE, F.	BU	TCBA	17	107
PARENT, F.	WA	TCBA	17	459

4 players tied at 16

The 16 players with the longest Stolen Base Streak Current

Name	Tm	Lg	SB	ASB
DONAHUE, J.	BR	TCBA	13	40
CHASE, H.	HP	TCBA	12	50
HUMMEL, J.	TU	TCBA	10	15
BRAIN, D.	MI	TCBA	9	9
SLAGLE, J.	PR	TCBA	9	50
STRANG, S.	HH	TCBA	8	16
CLYMER, O.	BE	TCBA	8	28
KANE, J.	TU	TCBA	7	25
HOFMAN, S.	TU	TCBA	7	49

7 players tied at 6

The 16 players with the longest Stolen Base Streak Season

Name	Tm	Lg	SB	ASB
CLYMER, O.	BE	TCBA	19	28
HOFMAN, S.	TU	TCBA	19	49
EVERS, J.	CL	TCBA	18	54
LAJOIE, N.	BR	TCBA	17	28
TINKER, J.	PR	TCBA	16	31
CHASE, H.	HP	TCBA	16	50
MAGGERT, H.	SO	TCBA	15	24
MURRAY, R.	TU	TCBA	13	38
DONAHUE, J.	BR	TCBA	13	40

7 players tied at 12

The 12 players with the longest Winning Streak Current

Name	Tm	Lg	W	GS
STRICKLETT, E.	BU	TCBA	6	28
SCANLAN, D.	HP	TCBA	5	15
POWELL, J.	MI	TCBA	5	30
WILLIS, V.	HH	TCBA	5	36
JOSS, A.	WA	TCBA	5	38
MATHEWSON, C.	CL	TCBA	5	40
NEUER, T.	WA	TCBA	4	5
HESS, O.	CL	TCBA	4	11
PFIESTER, J.	CL	TCBA	4	26

3 players tied at 3

The 11 players with the longest Winning Streak Season

Name	Tm	Lg	W	GS
WHITE, D.	LI	TCBA	8	36
JOSS, A.	WA	TCBA	8	38
BELL, G.	BE	TCBA	7	25
COAKLEY, A.	BU	TCBA	7	26
LUNDGREN, C.	LI	TCBA	7	28
SMITH, C.	HP	TCBA	7	34

5 players tied at 6

The 13 players with the longest Losing Streak Current

Name	Tm	Lg	L	GS
NEWTON, D.	PR	TCBA	7	9
HITT, R.	ME	TCBA	6	21
YOUNG, I.	PR	TCBA	6	30
HENLEY, W.	LI	TCBA	5	7
RUCKER, N.	LT	TCBA	5	31
BEEBE, F.	GW	TCBA	4	33

7 players tied at 3

The 11 players with the longest Quality Starts Streak Current

Name	Tm	Lg	QS	GS
WILLIS, V.	HH	TCBA	10	36
STRICKLETT, E.	BU	TCBA	9	28
LEEVEY, S.	MI	TCBA	9	29
WINTER, G.	ME	TCBA	7	28
EWING, B.	LI	TCBA	7	39
PASTORIUS, J.	GW	TCBA	6	30
SPARKS, T.	LI	TCBA	6	34
JOSS, A.	WA	TCBA	6	38

3 players tied at 5

The 11 players with the longest No Wins Streak Current

Name	Tm	Lg	NoW	GS
ADAMS, B.	ME	TCBA	14	17
OTEY, B.	CL	TCBA	11	11
NEWTON, D.	PR	TCBA	7	9
LINDAMAN, V.	LT	TCBA	6	10
HITT, R.	ME	TCBA	6	21
YOUNG, I.	PR	TCBA	6	30

5 players tied at 5

The 15 players with the longest Losing Streak Season

Name	Tm	Lg	L	GS
CORRIDON, F.	PR	TCBA	8	32
NEWTON, D.	PR	TCBA	7	9
WILLETT, E.	SO	TCBA	7	23
GLADE, F.	WM	TCBA	7	27
HUGHES, L.	SO	TCBA	7	29
KILLIAN, E.	GW	TCBA	7	40

9 players tied at 6

The 11 players with the longest Quality Starts Streak Season

Name	Tm	Lg	QS	GS
LUNDGREN, C.	LI	TCBA	16	28
JOSS, A.	WA	TCBA	14	38
FRASER, C.	ME	TCBA	12	16
MATHEWSON, C.	CL	TCBA	11	40
WHITE, D.	LI	TCBA	10	36
WILLIS, V.	HH	TCBA	10	36
WALSH, E.	WM	TCBA	10	44

4 players tied at 9

The 10 players with the longest No Wins Streak Season

Name	Tm	Lg	NoW	GS
ADAMS, B.	ME	TCBA	14	17
YOUNG, I.	PR	TCBA	13	30
HOGG, B.	LT	TCBA	12	20
MORGAN, C.	WM	TCBA	12	25
OTEY, B.	CL	TCBA	11	11
TAYLOR, D.	WM	TCBA	10	20
WILLETT, E.	SO	TCBA	10	23
LUNDGREN, C.	LI	TCBA	8	28
CORRIDON, F.	PR	TCBA	8	32
KILLIAN, E.	GW	TCBA	8	40

The 11 players with the longest Shutout Innings Current

Name	Tm	Lg	IP	GS
JOHNSON, W.	TU	TCBA	18.0	10
PFIESTER, J.	CL	TCBA	15.0	26
WILLIS, V.	HH	TCBA	13.0	36
CASTLETON, R.	SO	TCBA	12.0	2
NEUER, T.	WA	TCBA	12.0	5
GEHRING, H.	HP	TCBA	11.0	9
DYGERT, J.	MI	TCBA	11.0	33

4 players tied at 10.0

The 10 players with the longest Shutout Innings Season

Name	Tm	Lg	IP	GS
EWING, B.	LI	TCBA	49.0	39
JOSS, A.	WA	TCBA	36.0	38
WALSH, E.	WM	TCBA	30.0	44
KARGER, E.	TU	TCBA	28.0	42
CHESBRO, J.	BE	TCBA	25.0	25
HUGHES, L.	SO	TCBA	25.0	29
PASTORIUS, J.	GW	TCBA	25.0	30
BOULTES, J.	GW	TCBA	24.0	8
LUNDGREN, C.	LI	TCBA	24.0	28
MATHEWSON, C.	CL	TCBA	24.0	40

The 10 players with the longest Saves Streak Current

Name	Tm	Lg	SV	SOP
GLAZE, R.	TU	TCBA	8	9
CAMNITZ, H.	BR	TCBA	7	7
BURCHELL, F.	WA	TCBA	5	5
COVELESKI, H.	CL	TCBA	4	7
PHILLIPPE, D.	BR	TCBA	4	7
FIENE, L.	ME	TCBA	3	3
JOSS, A.	WA	TCBA	3	3
ORTH, A.	HP	TCBA	3	3
STEELE, E.	ME	TCBA	3	3
ESSICK, B.	GW	TCBA	3	4

The 16 players with the longest Saves Streak Season

Name	Tm	Lg	SV	SOP
Wood, W.	BR	TCBA	9	20
GLAZE, R.	TU	TCBA	8	9
CAMNITZ, H.	BR	TCBA	7	7
BURCHELL, F.	WA	TCBA	5	5
BERGER, H.	GW	TCBA	4	6
COVELESKI, H.	CL	TCBA	4	7
PHILLIPPE, D.	BR	TCBA	4	7
BOULTES, J.	GW	TCBA	4	10

8 players tied at 3

The 10 players with the longest Errorless Games Streak Current

Name	Tm	Lg	G	INN
HAHN, E.	HH	TCBA	154	1342.1
TENNEY, F.	CL	TCBA	142	1313.0
MAGEE, S.	BU	TCBA	89	1131.2
SLAGLE, J.	PR	TCBA	75	1216.1
CLARKE, F.	MI	TCBA	66	1214.2
DONAHUE, J.	BR	TCBA	63	1375.2
BATES, J.	GW	TCBA	59	1031.2
BARRY, S.	BR	TCBA	52	871.0
LEACH, T.	WM	TCBA	52	1165.2
NEALON, J.	BE	TCBA	50	914.0

The 10 players with the longest Errorless Games Streak Season

Name	Tm	Lg	G	INN
HAHN, E.	HH	TCBA	154	1342.1
TENNEY, F.	CL	TCBA	142	1313.0
HEMPHILL, C.	CL	TCBA	103	1375.2
SULLIVAN, D.	ME	TCBA	94	1252.2
MAGEE, S.	BU	TCBA	89	1131.2
CRAWFORD, S.	GW	TCBA	79	1292.2
SHECKARD, J.	HP	TCBA	78	1171.0
SLAGLE, J.	PR	TCBA	75	1216.1
BEAUMONT, G.	MI	TCBA	71	1292.1
COBB, T.	BU	TCBA	71	1342.1

A close-up photograph of a baseball, showing its characteristic red stitching on a light-colored leather surface. The words "BASEBALL" and "PLAYOFFS" are superimposed on the image in a stylized, blocky font. "BASEBALL" is in blue with a white outline, and "PLAYOFFS" is in red with a white outline. The text is centered horizontally across the middle of the ball.

BASEBALL
PLAYOFFS

1908

SEMI

FINAL

Team	1	2	3	4	5	6	7	8	9	10	11	12
Cleveland Naps	0	0	0	0	1	0	0	0	0	0	0	0
Long Island Islanders	0	0	0	0	0	0	1	0	0	0	0	0

Team	13	14	15	16	17	18	R	H	E	LOB	DP
Cleveland Naps	0	0	0	0	0	5	6	9	0	13	1
Long Island Islanders	0	0	0	0	0	0	1	7	4	6	1

Cleveland Naps (Game 1)																								
NAME	FT	AB	R	HR	BI	2B	3B	HR	TB	SO	BB	IBB	HBP	SH	SF	SB	CS	GDP	AVG	PO	A	E	DP	PB
F. TENNEY, 1b		7	0	1	0	1	0	0	2	0	2	0	0	0	0	0	0	1	.143	15	0	0	1	
C. HEMPHILL, rf		6	1	2	0	1	0	0	3	0	2	0	0	0	0	0	0	0	.333	6	0	0	0	
R. OLDRING, lf	I	7	1	0	0	0	0	0	0	2	0	0	1	0	0	0	0	0	.000	4	0	0	0	0
H. STEINFELDT, 3b		8	1	1	0	0	0	0	1	1	0	0	0	0	0	0	0	0	.125	0	1	0	0	
B. CONGALTON, cf		7	0	1	1	0	0	0	1	0	0	0	0	0	1	0	0	0	.143	5	0	0	0	
A. SCHLEI, c		6	1	1	0	1	0	0	2	1	2	0	0	0	0	0	0	0	.167	13	2	0	0	0
J. EVERS, 2b		7	2	1	1	0	0	0	1	0	1	0	0	0	0	2	0	0	.143	3	4	0	1	
A. BRIDWELL, ss		7	0	2	3	0	0	0	2	0	0	0	0	0	1	2	0	0	.286	8	8	0	1	
C. MATHEWSON, p		8	0	0	0	0	0	0	0	0	0	0	0	0	0	0	0	0	.000					
Totals		63	6	9	5	3	0	0	12	4	7	0	1	0	2	4	1	1						

NAME	FT	G	SC	IP	H	R	ER	2B	3B	HR	BF	SO	BB	IBB	HB	SH	SF	WP	BK	IR	ERA				
C. MATHEWSON, W, 1-0		125	18.0	7	1	1	2	1	0	0	61	13	2	0	0	0	0	0	0	0	.50				
Totals		18.0	7	1	1	2	1	0	0	0	61	13	2	0	0	0	0	0	0	0	54	15	0	1	0

Long Island Islanders (Game 1)																								
NAME	FT	AB	R	HR	BI	2B	3B	HR	TB	SO	BB	IBB	HBP	SH	SF	SB	CS	GDP	AVG	PO	A	E	DP	PB
E. ABBATICCHIO, 2b		7	0	1	0	0	0	0	1	2	0	0	0	0	0	0	0	0	.143	2	5	0	0	
O. PICKERING, lf		3	0	1	0	1	0	0	2	0	0	0	0	0	0	0	0	0	.333	1	0	0	0	
T. SPARKS, p		0	0	0	0	0	0	0	0	0	0	0	0	0	0	0	0	0	-					
G. BROWNE, ph		1	0	0	0	0	0	0	0	0	0	0	0	0	0	0	0	0	.000	0	0	0	0	
D. MASON, p	I	0	0	0	0	0	0	0	0	0	0	0	0	0	0	0	0	0	-					
W. HENLEY, p		0	0	0	0	0	0	0	0	0	0	0	0	0	0	0	0	0	-					
J. McEaney, ph		1	0	0	0	0	0	0	0	0	0	0	0	0	0	0	0	0	.000	0	0	0	0	
C. LUNDGREN, p		2	0	0	0	0	0	0	0	2	0	0	0	0	0	0	0	0	.000					
C. WALSH, p	I	0	0	0	0	0	0	0	0	0	0	0	0	0	0	0	0	0	-					
E. FLICK, rf		7	1	2	0	0	1	0	4	1	0	0	0	0	0	1	0	0	.286	4	0	0	0	
J. GANZEL, 1b		7	0	0	1	0	0	0	0	2	0	0	0	0	0	0	0	0	.000	21	1	0	1	
R. THOMAS, cf		6	0	1	0	1	0	0	2	0	1	0	0	0	0	1	0	0	.167	10	0	0	0	
W. ALPERMAN, ss		6	0	0	0	0	0	0	0	2	0	0	0	0	0	0	0	0	.000	3	5	1	1	
D. CASEY, ph		0	0	0	0	0	0	0	0	0	1	0	0	0	0	0	0	0	-					
E. COURTNEY, 3b		7	0	0	0	0	0	0	0	2	0	0	0	0	0	0	0	1	.000	0	4	0	0	
F. BOWERMAN, c		6	0	1	0	0	0	0	1	1	0	0	0	0	0	0	0	0	.167	4	1	1	0	1
B. EWING, p		1	0	0	0	0	0	0	0	1	0	0	0	0	0	0	0	0	.000					
B. SWEENEY, ph-lf		5	0	1	0	0	0	0	1	1	0	0	0	0	0	0	0	0	.200	7	0	1	0	
Totals		59	1	7	1	2	1	0	11	13	2	0	0	0	0	1	1	1						

NAME	FT	G	SC	IP	H	R	ER	2B	3B	HR	BF	SO	BB	IBB	HB	SH	SF	WP	BK	IR	ERA			
B. EWING		62	6.0	4	1	1	2	0	0	0	22	2	0	0	0	0	1	0	0	0	1.50			
T. SPARKS		2.0	0	0	0	0	0	0	0	7	0	0	0	0	0	0	0	0	0	0	.00			
D. MASON	I	.1	0	0	0	0	0	0	0	1	0	0	0	0	0	0	0	0	0	0	.00			
W. HENLEY		2.2	0	0	0	0	0	0	0	11	1	1	0	0	0	0	0	0	0	0	.00			
C. LUNDGREN, L, 0-1		6.1	5	5	4	1	0	0	0	31	1	6	0	1	0	1	0	0	0	5.68				
C. WALSH	I	.2	0	0	0	0	0	0	0	1	0	0	0	0	0	0	0	0	0	2	.00			
Totals		18.0	9	6	5	3	0	0	73	4	7	0	1	0	2	0	0	2		54	21	4	1	1



A game for the ages as Christy Mathewson pitches 18 INNINGS with a game score of 125 to defeat the Islanders, thanks to a 5-run 18th inning.



Long Island advances to the World Series for the 5th straight year outslugging Cleveland in the 7th game



U-TCB908 - TCBA Origins 1907 MLB Semi Finals - Game Summaries												
7 Games Played												
Date	No.	Team	R	H	E	G Sc	Starters	Decisions	Save			
10/04/07	7	Cleveland Naps	11	16	4	8	J. TAYLOR	L, J. TAYLOR	None			
16:20m	7	Long Island Islanders	16	16	4	27	D. WHITE	W, D. WHITE	None			
Date	No.	Team	R	H	E	G Sc	Starters	Decisions	Save			
10/03/07	6	Cleveland Naps	2	7	3	67	J. PFIESTER	L, J. PFIESTER	None			
15:21m	6	Long Island Islanders	4	6	1	47	B. EWING	W, W. HENLEY	None			
Date	No.	Team	R	H	E	G Sc	Starters	Decisions	Save			
10/01/07	5	Long Island Islanders	1	7	0	48	D. WHITE	L, D. WHITE	None			
10:15m	5	Cleveland Naps	4	11	1	76	C. MATHEWSON	W, C. MATHEWSON	None			
Date	No.	Team	R	H	E	G Sc	Starters	Decisions	Save			
09/30/07	4	Long Island Islanders	5	7	2	72	C. LUNDGREN	W, C. LUNDGREN	None			
15:21m	4	Cleveland Naps	2	4	2	48	O. HESS	L, O. HESS	None			
Date	No.	Team	R	H	E	G Sc	Starters	Decisions	Save			
09/29/07	3	Long Island Islanders	7	15	0	62	B. EWING	W, B. EWING	None			
16:06m	3	Cleveland Naps	4	6	1	32	J. TAYLOR	L, J. TAYLOR	None			
Date	No.	Team	R	H	E	G Sc	Starters	Decisions	Save			
09/27/07	2	Cleveland Naps	4	8	1	85	J. PFIESTER	W, J. PFIESTER	None			
10:38m	2	Long Island Islanders	1	2	3	48	T. SPARKS	L, T. SPARKS	None			
Date	No.	Team	R	H	E	Inn	G Sc	Starters	Decisions	Save		
09/26/07	1	Cleveland Naps	6	9	0	18	125	C. MATHEWSON	W, C. MATHEWSON	None		
33:43m	1	Long Island Islanders	1	7	4		62	B. EWING	L, C. LUNDGREN	None		

U-TCB908 - TCBA Origins 1907 MLB Semi Finals - Club Batting																	
2 Teams	AVG	OBP	SLG	G	AB	H	2B	3B	HR	R	R/G	SO	BB	LOB	SB	CS	SBP
Cleveland Naps	.229	.292	.316	7	266	61	11	3	2	33	4.7	18	23	53	9	2	81.8
Long Island Islanders	.224	.264	.291	7	268	60	11	2	1	35	5.0	40	12	39	11	3	78.6
TCBA Origins 1907 MLB Semi Finals	.227	.278	.303	7	534	121	22	5	3	68	9.7	58	35	92	20	5	80.0

U-TCB908 - TCBA Origins 1907 MLB Semi Finals - Club Pitching																	
2 Teams	ERA	G	CG	SHO	QS	SV	IP	H	R	ER	HR	SO	BB	HB	WP	BK	OBA
Cleveland Naps	2.17	7	4	0	3	0	70.2	60	35	17	1	40	12	3	0	0	.224
Long Island Islanders	3.42	7	2	0	3	0	71.0	61	33	27	2	18	23	3	0	0	.229
TCBA Origins 1907 MLB Semi Finals	2.80	7	6	0	6	0	141.2	121	68	44	3	58	35	6	0	0	.227

U-TCB908 - TCBA Origins 1907 MLB Semi Finals - Club Fielding																
2 Teams	FLD	G	PO	A	E	DP	TP	PB	OSB	OCS	OSBP	OSBA	DER	UER	UERP	
Cleveland Naps	.961	7	212	84	12	5	0	0	11	3	78.6	1.401	.707	18	51.4	
Long Island Islanders	.958	7	213	107	14	7	0	2	9	2	81.8	1.141	.726	6	18.2	
TCBA Origins 1907 MLB Semi Finals	.960	7	425	191	26	12	0	2	20	5	80.0	1.271	.717	24	35.3	

6 Games Played

Date	No.	Team	R	H	E	G Sc	Starters	Decisions	Save	
10/03/07	6	Buffalo Mules	11	16	1	49	E. STRICKLETT	W, E. STRICKLETT	None	
17:43m	6	Mimosa Mirthmakers	5	9	1	-3	S. LEEVER	L, S. LEEVER		
Date	No.	Team	R	H	E	Inn	G Sc	Starters	Decisions	Save
10/01/07	5	Mimosa Mirthmakers	3	10	2	13	60	E. REULBACH	L, J. POWELL	
25:03m	5	Buffalo Mules	4	8	3		85	A. COAKLEY	W, W. CLARKSON	None
Date	No.	Team	R	H	E	G Sc	Starters	Decisions	Save	
09/30/07	4	Mimosa Mirthmakers	2	6	0	48	J. DYGERT	L, J. DYGERT		
13:08m	4	Buffalo Mules	7	5	0	70	C. BENDER	W, C. BENDER	None	
Date	No.	Team	R	H	E	G Sc	Starters	Decisions	Save	
09/29/07	3	Mimosa Mirthmakers	2	9	0	79	S. LEEVER	W, S. LEEVER	None	
14:14m	3	Buffalo Mules	0	4	0	71	B. RAYMOND	L, B. RAYMOND		
Date	No.	Team	R	H	E	G Sc	Starters	Decisions	Save	
09/27/07	2	Buffalo Mules	7	12	3	25	E. STRICKLETT	L, E. STRICKLETT		
17:56m	2	Mimosa Mirthmakers	10	12	1	41	J. DYGERT	W, L. RICHIE	None	
Date	No.	Team	R	H	E	G Sc	Starters	Decisions	Save	
09/26/07	1	Buffalo Mules	3	10	2	78	C. BENDER	W, C. BENDER	None	
13:29m	1	Mimosa Mirthmakers	2	6	3	65	E. REULBACH	L, E. REULBACH		

A 13-inning win in Game 5 proved the pivotal outcome as Buffalo bested Mimosa in six games. Set up men George Moriarty and Simon Nicholls seemed to always be on base, together safely reaching base 27 times (17 hits, 8 walks, 2 HBP) and scoring 13 runs.



U-TCB908 - Buffalo Mules - Summary

Batting	AVG	OBP	SLG	G	AB	H	2B	3B	HR	R	R/G	SO	BB	LOB	SB	CS	SBP
Buffalo Mules	.251	.328	.329	6	219	55	12	1	1	32	5.3	26	24	51	1	2	33.3
Pitching	ERA	G	CG	SHO	QS	SV	IP	H	R	ER	HR	SO	BB	HB	WP	BK	OBA
Buffalo Mules	2.37	6	3	0	4	0	57.0	52	24	15	0	38	17	1	0	0	.236
Fielding	FLD	G	PO	A	E	DP	TP	PB	OSB	OCS	OSBP	OSBA	DER	UER	UERP		
Buffalo Mules	.964	6	171	70	9	3	0	1	3	0	100.0	.474	.682	9	37.5		

U-TCB908 - Mimosa Mirthmakers - Summary

Batting	AVG	OBP	SLG	G	AB	H	2B	3B	HR	R	R/G	SO	BB	LOB	SB	CS	SBP
Mimosa Mirthmakers	.236	.294	.305	6	220	52	9	3	0	24	4.0	38	17	45	3	0	100.0
Pitching	ERA	G	CG	SHO	QS	SV	IP	H	R	ER	HR	SO	BB	HB	WP	BK	OBA
Mimosa Mirthmakers	4.47	6	2	1	3	0	56.1	55	32	28	1	26	24	3	5	0	.251
Fielding	FLD	G	PO	A	E	DP	TP	PB	OSB	OCS	OSBP	OSBA	DER	UER	UERP		
Mimosa Mirthmakers	.970	6	169	61	7	2	0	0	1	2	33.3	.160	.701	4	12.5		

The 11 players with the best Wins - Losses

Name	Tm	Lg	W - L	PCT
BENDER, C.	BU	TCBA	2-0	1.000
MATHEWSON, C.	CL	TCBA	2-0	1.000

9 players tied at 1

The 11 players with the highest Win Percentage

Name	Tm	Lg	PCT	DEC
BENDER, C.	BU	TCBA	1.000	2
MATHEWSON, C.	CL	TCBA	1.000	2
CLARKSON, W.	BU	TCBA	1.000	1
EWING, B.	LI	TCBA	1.000	1
HENLEY, W.	LI	TCBA	1.000	1
RICHIE, L.	MI	TCBA	1.000	1

5 players tied at 0.500

The 10 players with the lowest Earned Run Average

Name	Tm	Lg	ERA	IP
MATHEWSON, C.	CL	TCBA	.33	27.0
PFIESTER, J.	CL	TCBA	.51	17.2
COAKLEY, A.	BU	TCBA	.75	12.0
BENDER, C.	BU	TCBA	1.00	18.0
REULBACH, E.	MI	TCBA	2.25	16.0
RAYMOND, B.	BU	TCBA	2.25	8.0
SPARKS, T.	LI	TCBA	2.77	13.0
HESS, O.	CL	TCBA	2.89	9.1
LUNDGREN, C.	LI	TCBA	2.93	15.1
EWING, B.	LI	TCBA	3.15	20.0

The 10 players with the most Earned Runs Prevented

Name	Tm	Lg	ERPT	IP
MATHEWSON, C.	CL	TCBA	8.2	27.0
PFIESTER, J.	CL	TCBA	5.0	17.2
BENDER, C.	BU	TCBA	4.1	18.0
COAKLEY, A.	BU	TCBA	3.1	12.0
REULBACH, E.	MI	TCBA	1.5	16.0
RAYMOND, B.	BU	TCBA	.7	8.0
SPARKS, T.	LI	TCBA	.4	13.0
LUNDGREN, C.	LI	TCBA	.2	15.1
HESS, O.	CL	TCBA	.2	9.1
EWING, B.	LI	TCBA	-.2	20.0

The 12 players with the most Innings Pitched

Name	Tm	Lg	IP	G
MATHEWSON, C.	CL	TCBA	27.0	2
EWING, B.	LI	TCBA	20.0	3
BENDER, C.	BU	TCBA	18.0	2
PFIESTER, J.	CL	TCBA	17.2	2
REULBACH, E.	MI	TCBA	16.0	2
STRICKLETT, E.	BU	TCBA	15.2	2
LUNDGREN, C.	LI	TCBA	15.1	2
LEEVEY, S.	MI	TCBA	14.2	2
SPARKS, T.	LI	TCBA	13.0	3

3 players tied at 12.0

The 10 players with the lowest Opposition Batting Average

Name	Tm	Lg	OBA	IP
Hobbs, R.	CL	TCBA	.125	5.0
PFIESTER, J.	CL	TCBA	.133	17.2
MATHEWSON, C.	CL	TCBA	.152	27.0
LUNDGREN, C.	LI	TCBA	.167	15.1
SPARKS, T.	LI	TCBA	.174	13.0
COAKLEY, A.	BU	TCBA	.186	12.0
BENDER, C.	BU	TCBA	.190	18.0
RICHIE, L.	MI	TCBA	.190	5.1
EWING, B.	LI	TCBA	.208	20.0
HENLEY, W.	LI	TCBA	.214	7.1

The 11 players with the most Strikeouts

Name	Tm	Lg	SO	IP
MATHEWSON, C.	CL	TCBA	19	27.0
REULBACH, E.	MI	TCBA	13	16.0
RAYMOND, B.	BU	TCBA	12	8.0
PFIESTER, J.	CL	TCBA	12	17.2
BENDER, C.	BU	TCBA	12	18.0
EWING, B.	LI	TCBA	8	20.0
COAKLEY, A.	BU	TCBA	6	12.0
DYGERT, J.	MI	TCBA	6	12.0
STRICKLETT, E.	BU	TCBA	6	15.2

2 players tied at 4

The 10 players with the highest Strikeouts Per 9 Innings, Starting

Name	Tm	Lg	SO/9-s	IP-s
RAYMOND, B.	BU	TCBA	13.5	8.0
REULBACH, E.	MI	TCBA	7.3	16.0
MATHEWSON, C.	CL	TCBA	6.3	27.0
PFIESTER, J.	CL	TCBA	6.1	17.2
BENDER, C.	BU	TCBA	6.0	18.0
COAKLEY, A.	BU	TCBA	4.5	12.0
DYGERT, J.	MI	TCBA	4.5	12.0
HESS, O.	CL	TCBA	3.9	7.0
EWING, B.	LI	TCBA	3.6	20.0
TAYLOR, J.	CL	TCBA	3.5	7.2



Great and thick look up last month. There is little to choose between the two great right handers. Bender of this life old world leads off on percentage just now.

Chief Bender and Chris Mathewson, two of the greatest pitchers in baseball today.

The 10 players with the highest Batting Average

Name	Tm	Lg	AVG	PA
PICKERING, O.	LI	TCBA	.481	28
MORIARTY, G.	BU	TCBA	.429	29
NICHOLLS, S.	BU	TCBA	.400	23
HARTSEL, T.	MI	TCBA	.360	28
MAGEE, S.	BU	TCBA	.333	28
STEINFELDT, H.	CL	TCBA	.313	34
FLICK, E.	LI	TCBA	.300	33
EVERS, J.	CL	TCBA	.281	33
BEAUMONT, G.	MI	TCBA	.280	28
BOWERMAN, F.	LI	TCBA	.280	27

The 10 players with the highest Slugging Average

Name	Tm	Lg	SLG	PA
PICKERING, O.	LI	TCBA	.556	28
MAGEE, S.	BU	TCBA	.500	28
MORIARTY, G.	BU	TCBA	.476	29
FLICK, E.	LI	TCBA	.467	33
HEMPHILL, C.	CL	TCBA	.448	34
HARTSEL, T.	MI	TCBA	.440	28
BRAIN, D.	MI	TCBA	.400	28
NICHOLLS, S.	BU	TCBA	.400	23
JONES, F.	BU	TCBA	.385	29
GANZEL, J.	LI	TCBA	.375	33

The 10 players with the highest On Base Percentage

Name	Tm	Lg	OBP	PA
MORIARTY, G.	BU	TCBA	.552	29
PICKERING, O.	LI	TCBA	.500	28
NICHOLLS, S.	BU	TCBA	.478	23
HARTSEL, T.	MI	TCBA	.429	28
MAGEE, S.	BU	TCBA	.429	28
CLARKE, N.	BU	TCBA	.400	20
FLICK, E.	LI	TCBA	.364	33
BEAUMONT, G.	MI	TCBA	.357	28
STEINFELDT, H.	CL	TCBA	.353	34
TENNEY, F.	CL	TCBA	.343	35

The 10 players with the most Runs Scored

Name	Tm	Lg	R	PA
MORIARTY, G.	BU	TCBA	7	29
NICHOLLS, S.	BU	TCBA	6	23
HARTSEL, T.	MI	TCBA	6	28
ABBATICCHIO, E.	LI	TCBA	6	30
GANZEL, J.	LI	TCBA	6	33
EVERS, J.	CL	TCBA	5	33
FLICK, E.	LI	TCBA	5	33
HEMPHILL, C.	CL	TCBA	5	34
OLDRING, R.	CL	TCBA	5	34
TENNEY, F.	CL	TCBA	5	35

The 14 players with the most Runs Batted In

Name	Tm	Lg	RBI	PA
MORIARTY, G.	BU	TCBA	7	29
PICKERING, O.	LI	TCBA	6	28
JONES, F.	BU	TCBA	6	29
BRIDWELL, A.	CL	TCBA	6	33
HARTSEL, T.	MI	TCBA	5	28
MAGEE, S.	BU	TCBA	5	28
FLICK, E.	LI	TCBA	5	33
GANZEL, J.	LI	TCBA	5	33

6 players tied at 4

The 10 players with the most Hits

Name	Tm	Lg	H	PA
PICKERING, O.	LI	TCBA	13	28
STEINFELDT, H.	CL	TCBA	10	34
HARTSEL, T.	MI	TCBA	9	28
MORIARTY, G.	BU	TCBA	9	29
EVERS, J.	CL	TCBA	9	33
FLICK, E.	LI	TCBA	9	33
NICHOLLS, S.	BU	TCBA	8	23
MAGEE, S.	BU	TCBA	8	28
GANZEL, J.	LI	TCBA	8	33
TENNEY, F.	CL	TCBA	8	35

The 11 players with the most Doubles

Name	Tm	Lg	2B	PA
MAGEE, S.	BU	TCBA	4	28
JONES, F.	BU	TCBA	3	29
FLICK, E.	LI	TCBA	3	33
OLDRING, R.	CL	TCBA	3	34

7 players tied at 2

The 69 players with the most Triples

Name	Tm	Lg	3B	PA
HEMPHILL, C.	CL	TCBA	2	34
ANDERSON, J.	MI	TCBA	1	24
RITCHEY, C.	MI	TCBA	1	24
BRAIN, D.	MI	TCBA	1	28
COBB, T.	BU	TCBA	1	29
FLICK, E.	LI	TCBA	1	33
GANZEL, J.	LI	TCBA	1	33
TENNEY, F.	CL	TCBA	1	35

The 69 players with the most Home Runs

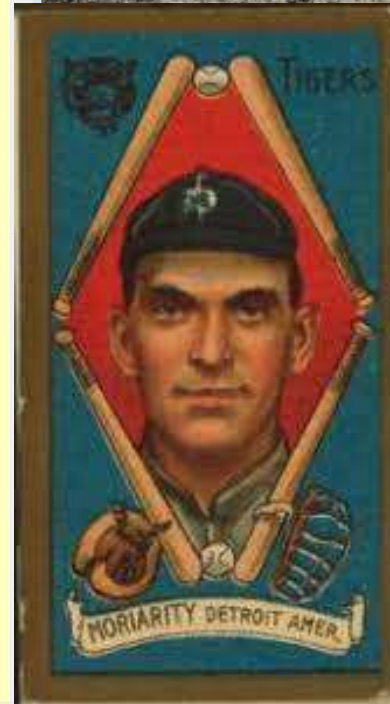
Name	Tm	Lg	HR	PA
Hobbs, R.	CL	TCBA	2	4
Katon, N.	BU	TCBA	1	19
ABBATICCHIO, E.	LI	TCBA	1	30

66 players tied at 0

Harry Steinfeldt



Ollie Pickering



1908



Team	1	2	3	4	5	6	7	8	9	R	H	E	LOB	DP
Buffalo Mules	0	2	0	0	0	0	1	1	0	4	8	0	5	1
Long Island Islanders	0	0	0	0	0	0	1	0	0	1	7	1	5	1

Buffalo Mules (Game 1)																								
NAME	FT	AB	R	HR	BI	2B	3B	HR	TB	SO	BB	IBB	HBP	SH	SF	SB	CS	GDP	AVG	PO	A	E	DP	PB
S. NICHOLLS, ss		3	0	0	0	0	0	0	0	0	0	0	0	1	0	0	0	0	.000	2	1	0	0	
G. MORIARTY, 3b		4	0	1	0	0	0	0	1	1	0	0	0	0	0	0	0	0	.250	1	0	0	1	
T. COBB, rf		3	0	0	1	0	0	0	0	1	0	0	0	0	1	0	0	0	.000	2	0	0	0	
S. MAGEE, cf		3	2	1	0	0	0	0	1	0	1	0	0	0	0	1	0	0	.333	3	1	0	1	
F. JONES, lf		4	0	1	0	1	0	0	2	0	0	0	0	0	0	0	0	0	.250	1	0	0	0	
N. CLARKE, c		3	0	1	1	0	0	0	1	0	1	0	0	0	0	0	0	0	.333	7	1	0	0	0
B. UNGLAUB, 1b		4	1	2	1	1	0	0	3	0	0	0	0	0	0	0	0	1	.500	10	1	0	1	
N. Katon, 2b		3	0	1	1	0	0	0	1	0	1	0	0	0	0	0	0	0	.333	1	7	0	0	
C. BENDER, p		4	1	1	0	0	0	0	1	0	0	0	0	0	0	0	0	0	.250					
Totals		31	4	8	4	2	0	0	10	2	3	0	0	1	1	1	0	1						

NAME	FT	G	SC	IP	H	R	ER	2B	3B	HR	BF	SO	BB	IBB	HB	SH	SF	WP	BK	IR	ERA	
C. BENDER, W, 1-0		7	5	9.0	7	1	1	1	1	0	33	6	0	0	1	0	1	0	0	0	0	1.00
Totals		9.0	7	1	1	1	1	1	0	33	6	0	0	0	1	0	1	0	0	0	0	27 11 0 1 0

Long Island Islanders (Game 1)																								
NAME	FT	AB	R	HR	BI	2B	3B	HR	TB	SO	BB	IBB	HBP	SH	SF	SB	CS	GDP	AVG	PO	A	E	DP	PB
R. THOMAS, rf		4	0	2	0	0	1	0	4	0	0	0	0	0	0	0	1	0	.500	1	0	0	0	
E. ABBATICCHIO, 2b		3	0	0	0	0	0	0	0	0	0	0	0	0	0	0	0	0	.000	0	3	0	0	
T. SPARKS, p		0	0	0	0	0	0	0	0	0	0	0	0	0	0	0	0	0	-					
J. MCDONALD, p	I	0	0	0	0	0	0	0	0	0	0	0	0	0	0	0	0	0	-					
O. PICKERING, ph		1	0	0	0	0	0	0	0	1	0	0	0	0	0	0	0	0	.000	0	0	0	0	
E. FLICK, cf		4	1	2	0	1	0	0	3	1	0	0	0	0	0	0	0	0	.500	3	0	0	0	
J. GANZEL, 1b		4	0	0	0	0	0	0	0	0	0	0	0	0	0	0	0	0	.000	12	2	0	1	
G. BROWNE, lf		4	0	3	0	0	0	0	3	1	0	0	0	0	0	0	0	0	.750	1	1	1	0	
W. ALPERMAN, ss		3	0	0	0	0	0	0	0	0	0	0	1	0	0	0	0	0	.000	1	5	0	1	
F. BOWERMAN, c		2	0	0	1	0	0	0	0	1	0	0	0	0	1	0	0	0	.000	7	0	0	0	0
D. CASEY, 3b		1	0	0	0	0	0	0	0	0	0	0	0	0	0	0	0	0	.000	0	1	0	0	
H. SCHLAFLY, ph-2b		2	0	0	0	0	0	0	0	1	0	0	0	0	0	0	0	0	.000	1	0	0	0	
B. EWING, p		1	0	0	0	0	0	0	0	1	0	0	0	0	0	0	0	0	.000					
E. COURTNEY, ph-3b		2	0	0	0	0	0	0	0	0	0	0	0	0	0	0	0	0	.000	0	0	0	0	
Totals		31	1	7	1	1	1	0	10	6	0	0	1	0	1	0	1	0						

NAME	FT	G	SC	IP	H	R	ER	2B	3B	HR	BF	SO	BB	IBB	HB	SH	SF	WP	BK	IR	ERA	
B. EWING, L, 0-1		5	8	6.0	4	2	2	1	0	0	21	2	0	0	0	0	0	0	0	0	0	3.00
T. SPARKS		2.0	4	2	2	1	0	0	0	0	12	0	2	0	0	1	1	0	0	0	0	9.00
J. MCDONALD	I	1.0	0	0	0	0	0	0	0	0	3	0	1	0	0	0	0	0	0	2	0	.00
Totals		9.0	8	4	4	2	0	0	36	2	3	0	0	0	1	1	0	0	2	0	27 14 1 1 0	

A 2-run 2nd is all that the Mules need to collect their first ever Origins World Series victory. Chief Bender goes the distance without walking a hitter.



Team	1	2	3	4	5	6	7	8	9	R	H	E	LOB	DP
Buffalo Mules	1	0	0	0	0	1	0	1	0	3	11	1	9	0
Long Island Islanders	0	0	0	0	0	0	0	0	4	4	4	1	5	1

Buffalo Mules (Game 2)																										
NAME	FT	AB	R	HRBI	2B	3B	HR	TB	SO	BB	IBB	HBP	SH	SF	SB	CS	GDP	AVG	PO	A	E	DP	PB			
S. NICHOLLS, ss		5	0	1	0	0	0	1	0	0	0	0	0	0	0	0	0	.125	1	4	0	0				
G. MORIARTY, 3b		5	1	2	0	0	0	2	0	0	0	0	0	0	0	0	0	.333	0	2	0	0				
T. COBB, rf		4	0	1	0	0	0	1	0	1	0	0	0	0	0	1	1	.143	0	0	0	0				
S. MAGEE, cf		3	2	2	0	0	0	2	0	1	0	0	0	0	1	0	0	.500	5	0	0	0				
N. CLARKE, c		4	0	2	0	0	0	2	0	0	0	0	0	0	0	0	0	.429	6	1	1	0	0			
F. JONES, lf		2	0	1	1	0	0	1	0	1	0	0	0	1	0	0	0	.333	2	1	0	0				
B. UNGLAUB, 1b		3	0	0	1	0	0	0	2	0	0	0	0	1	0	0	0	.286	7	0	0	0				
N. Katon, 2b		4	0	2	0	0	0	2	0	0	0	0	0	0	0	0	0	.429	4	2	0	0				
B. RAYMOND, p		3	0	0	0	0	0	0	1	0	0	0	1	0	0	0	0	.000								
Totals		33	3	11	2	0	0	11	3	3	0	0	1	2	1	1	1									
NAME	FT	G	SC	IP	H	R	ER	2B	3B	HR	BF	SO	BB	IBB	HB	SH	SF	WP	BK	IR	ERA					
B. RAYMOND, L, 0-1		61	8.1	4	4	3	2	0	0	0	34	6	5	1	1	0	0	1	0	0	3.24	0	0	0	0	
Totals		8.1	4	4	3	2	0	0	0	0	34	6	5	1	1	0	0	1	0	0		25	10	1	0	0

Long Island Islanders (Game 2)																										
NAME	FT	AB	R	HRBI	2B	3B	HR	TB	SO	BB	IBB	HBP	SH	SF	SB	CS	GDP	AVG	PO	A	E	DP	PB			
R. THOMAS, rf		2	1	0	0	0	0	0	1	2	0	0	0	0	0	1	0	.333	2	1	0	0				
E. ABBATICCHIO, 2b		4	1	2	1	1	0	3	0	0	0	0	0	0	1	0	0	.286	5	4	0	1				
E. FLICK, cf		3	1	0	0	0	0	0	0	1	0	0	0	0	0	0	0	.286	3	0	0	0				
J. GANZEL, 1b		4	0	0	0	0	0	0	2	0	0	0	0	0	0	0	0	.000	10	0	1	1				
O. PICKERING, lf		4	0	1	0	0	0	1	0	0	0	0	0	0	1	0	0	.200	2	0	0	0				
E. COURTNEY, 3b		3	0	0	0	0	0	0	2	1	1	0	0	0	0	0	0	.000	0	1	0	0				
W. ALPERMAN, ss		3	0	1	1	1	0	2	1	0	0	1	0	0	0	0	0	.167	1	3	0	1				
F. BOWERMAN, c		3	0	0	0	0	0	0	0	0	0	0	0	0	0	0	0	.000	4	1	0	0	1			
C. LUNDGREN, p		2	0	0	0	0	0	0	0	0	0	0	0	0	0	0	0	.000								
W. HENLEY, p		0	0	0	0	0	0	0	0	0	0	0	0	0	0	0	0	-								
H. SCHLAFELY, ph		0	1	0	0	0	0	0	0	1	0	0	0	0	0	0	0	.000	0	0	0	0				
Totals		28	4	4	2	2	0	6	6	5	1	1	0	0	2	1	0									
NAME	FT	G	SC	IP	H	R	ER	2B	3B	HR	BF	SO	BB	IBB	HB	SH	SF	WP	BK	IR	ERA					
C. LUNDGREN		47	7.0	10	3	2	0	0	0	0	33	3	3	0	0	1	1	0	0	0	2.57	0	2	0	0	
W. HENLEY, W, 1-0		2.0	1	0	0	0	0	0	0	0	6	0	0	0	0	0	1	0	0	3	.00	0	1	0	0	
Totals		9.0	11	3	2	0	0	0	0	0	39	3	3	0	0	1	2	0	0	3		27	13	1	1	1

Bugs Raymond takes a 3-0 lead into the 9th inning, but an E-2, WP, HBP help set up a 1-out walk off double by Whitey Alperman to even the series.



Team	1	2	3	4	5	6	7	8	9	R	H	E	LOB	DP
Long Island Islanders	1	0	0	0	0	0	0	1	1	3	5	1	4	1
Buffalo Mules	1	0	1	0	2	0	0	2		6	13	2	13	1

Long Island Islanders (Game 3)																								
NAME	FT	AB	R	HRBI	2B	3B	HR	TB	SO	BB	IBB	HBP	SH	SF	SB	CS	GDP	AVG	PO	A	E	DP	PB	
R. THOMAS, rf		4	0	0	0	0	0	0	0	0	0	0	0	0	0	0	0	.200	1	0	0	0		
E. ABBATICCHIO, 2b		3	1	1	0	1	0	0	2	0	1	0	0	0	0	1	0	.300	2	4	0	0		
E. FLICK, cf		1	0	0	0	0	0	0	0	0	0	0	1	0	0	0	0	.250	1	0	0	0		
G. BROWNE, pr-cf		2	1	0	0	0	0	0	0	0	0	0	0	0	0	0	0	.500	1	0	0	0		
O. PICKERING, lf		4	0	1	1	0	0	0	1	0	0	0	0	0	1	0	0	.222	3	1	0	1		
J. GANZEL, 1b		4	0	1	0	0	0	0	1	0	0	0	0	0	0	0	0	.083	8	0	0	0		
E. COURTNEY, 3b		4	1	1	1	0	0	0	1	0	0	0	0	0	0	0	0	.111	0	1	0	0		
W. ALPERMAN, ss		3	0	0	0	0	0	0	0	0	0	0	0	0	0	0	0	.111	1	3	0	0		
J. McEneaney, ph		1	0	0	0	0	0	0	0	0	0	0	0	0	0	0	0	.000	0	0	0	0		
F. BOWERMAN, c		3	0	1	0	0	0	0	1	0	0	0	0	0	0	0	0	.125	7	0	0	1	0	
B. EWING, p		2	0	0	0	0	0	0	0	0	0	0	0	0	0	0	0	.000						
B. SWEENEY, ph		0	0	0	1	0	0	0	0	0	0	0	0	1	0	0	0	-	0	0	0	0		
W. HENLEY, p		0	0	0	0	0	0	0	0	0	0	0	0	0	0	0	0	-						
D. MASON, p	I	0	0	0	0	0	0	0	0	0	0	0	0	0	0	0	0	-						
Totals		31	3	5	3	1	0	0	6	0	1	0	1	0	1	1	0							
NAME	FT	G	SC	IP	H	R	ER	2B	3B	HR	BF	SO	BB	IBB	HB	SH	SF	WP	BK	IR	ERA			
B. EWING, L, 0-2		40	7.0	11	4	4	1	0	0	0	36	4	3	0	1	1	1	0	0	0	4.15			
W. HENLEY		.2	2	2	2	0	0	2	6	0	1	0	1	0	0	0	0	0	0	0	6.75			
D. MASON	I	.1	0	0	0	0	0	0	1	0	0	0	0	0	0	0	0	0	0	2	.00			
Totals		8.0	13	6	6	1	0	2	43	4	4	0	2	1	1	0	0	2		24	11	1	1	0

INJURIES : E. FLICK (4 days)

Buffalo Mules (Game 3)																								
NAME	FT	AB	R	HRBI	2B	3B	HR	TB	SO	BB	IBB	HBP	SH	SF	SB	CS	GDP	AVG	PO	A	E	DP	PB	
S. NICHOLLS, ss		5	0	2	0	0	0	2	1	0	0	0	0	0	0	0	0	.231	3	7	0	1		
G. MORIARTY, 3b		5	2	2	0	1	0	0	3	0	0	0	0	0	0	0	0	.357	0	2	1	0		
S. MAGEE, cf		5	1	3	1	0	0	1	6	2	0	0	0	0	0	0	0	.545	2	0	0	0		
N. CLARKE, c		3	2	1	1	0	0	1	4	0	2	0	0	0	0	0	0	.400	1	2	1	0	0	
T. COBB, rf		3	1	1	1	0	0	0	1	0	1	0	1	0	0	0	0	.200	1	0	0	0		
F. JONES, lf		2	0	0	1	0	0	0	0	0	1	0	1	0	1	0	0	.250	2	0	0	0		
P. BENNETT, pr-lf	I	0	0	0	0	0	0	0	0	0	0	0	0	0	0	0	0	-	0	0	0	0		
B. UNGLAUB, 1b		5	0	1	2	0	0	0	1	1	0	0	0	0	0	0	0	.250	15	3	0	1		
N. Katon, 2b		4	0	3	0	0	0	0	3	0	0	0	0	0	0	0	0	.545	0	2	0	0		
A. COAKLEY, p		3	0	0	0	0	0	0	0	0	0	0	0	1	0	0	0	.000						
Totals		35	6	13	6	1	0	2	20	4	4	0	2	1	1	0	0							
NAME	FT	G	SC	IP	H	R	ER	2B	3B	HR	BF	SO	BB	IBB	HB	SH	SF	WP	BK	IR	ERA			
A. COAKLEY, W, 1-0		68	9.0	5	3	1	1	0	0	0	34	0	1	0	1	0	1	0	0	0	1.00			
Totals		9.0	5	3	1	1	0	0	34	0	1	0	1	0	1	0	0	0		27	19	2	1	0

INJURIES : F. JONES (0 days)

Buffalo has a 4-2 lead when Sherry Magee and Nig Clarke hit back to back home runs in the bottom of the 8th. Weldon Henley then issues back to back HBP (Ty Cobb and Fielder Jones), knocking Jones out for the game. Earlier Andy Coakley had beamed Elmer Flick, knocking him out for the series.

Buffalo withstands a 9th inning rally to take a 2-1 series lead.

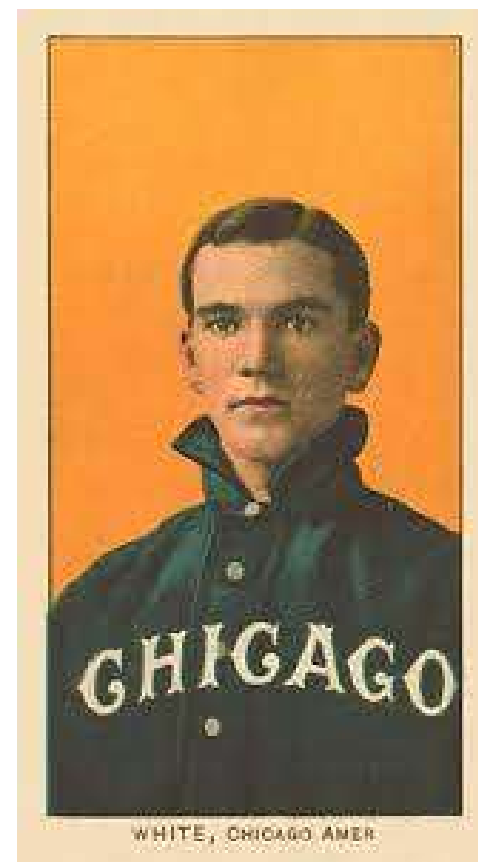


Team	1	2	3	4	5	6	7	8	9	R	H	E	LOB	DP
Long Island Islanders	1	0	0	0	0	0	0	0	0	1	5	0	4	0
Buffalo Mules	0	0	0	0	0	0	0	0	0	0	5	0	4	0

Long Island Islanders (Game 4)																										
NAME	FT	AB	R	HR	BI	2B	3B	HR	TB	SO	BB	IBB	HBP	SH	SF	SB	CS	GDP	AVG	PO	A	E	DP	PB		
R. THOMAS, cf		4	0	1	0	0	0	0	1	0	0	0	0	0	0	0	0	0	.214	5	0	0	0			
E. ABBATICCHIO, 2b		4	1	1	0	0	0	0	1	1	0	0	0	0	0	0	0	0	.286	1	4	0	0			
G. BROWNE, rf		4	0	1	0	0	0	0	1	0	0	0	0	0	0	0	0	0	.400	1	0	0	0			
O. PICKERING, lf		4	0	1	1	0	0	0	1	0	0	0	0	0	0	0	0	0	.231	5	0	0	0			
J. GANZEL, 1b		4	0	0	0	0	0	0	0	2	0	0	0	0	0	0	0	0	.063	9	0	0	0			
E. COURTNEY, 3b		2	0	0	0	0	0	0	0	0	1	0	0	0	0	1	1	0	.091	0	1	0	0			
D. CASEY, 3b		0	0	0	0	0	0	0	0	0	0	0	0	0	0	0	0	0	.000	0	0	0	0			
W. ALPERMAN, ss		3	0	1	0	0	0	0	1	0	0	0	0	0	0	0	0	0	.167	1	2	0	0			
F. BOWERMAN, c		3	0	0	0	0	0	0	0	0	0	0	0	0	0	0	0	0	.091	5	1	0	0	0		
D. WHITE, p		3	0	0	0	0	0	0	0	0	0	0	0	0	0	0	0	0	.000							
Totals		31	1	5	1	0	0	0	5	3	1	0	0	0	0	1	1	0								
NAME	FT	G	SC	IP	H	R	ER	2B	3B	HR	BF	SO	BB	IBB	HB	SH	SF	WP	BK	IR	ERA					
D. WHITE, W, 1- 0		82	9.0	5	0	0	0	0	0	0	31	5	0	0	0	0	0	0	0	0	.00	0	0	0	0	
Totals		9.0	5	0	0	0	0	0	0	0	31	5	0	0	0	0	0	0	0	0		27	8	0	0	0

Buffalo Mules (Game 4)																										
NAME	FT	AB	R	HR	BI	2B	3B	HR	TB	SO	BB	IBB	HBP	SH	SF	SB	CS	GDP	AVG	PO	A	E	DP	PB		
S. NICHOLLS, ss		4	0	2	0	0	0	0	2	0	0	0	0	0	0	0	0	0	.294	1	5	0	0			
G. MORIARTY, 3b		4	0	1	0	0	0	0	1	0	0	0	0	0	0	0	0	0	.333	0	1	0	0			
S. MAGEE, cf		4	0	0	0	0	0	0	0	0	0	0	0	0	0	0	0	0	.400	5	0	0	0			
T. COBB, rf		4	0	0	0	0	0	0	0	0	0	0	0	0	0	0	0	0	.143	2	0	0	0			
F. JONES, lf		3	0	0	0	0	0	0	0	1	0	0	0	0	0	0	0	0	.182	4	0	0	0			
B. UNGLAUB, 1b		3	0	2	0	0	0	0	2	1	0	0	0	0	0	0	1	0	.333	10	0	0	0			
N. Katon, 2b		3	0	0	0	0	0	0	0	2	0	0	0	0	0	0	0	0	.429	0	2	0	0			
C. BENDER, p		3	0	0	0	0	0	0	0	1	0	0	0	0	0	0	0	0	.143							
F. PAYNE, c		2	0	0	0	0	0	0	0	0	0	0	0	0	0	0	0	0	.000	5	0	0	0	0		
G. DAVIS, ph		1	0	0	0	0	0	0	0	0	0	0	0	0	0	0	0	0	.000	0	0	0	0			
Totals		31	0	5	0	0	0	0	5	5	0	0	0	0	0	0	1	0								
NAME	FT	G	SC	IP	H	R	ER	2B	3B	HR	BF	SO	BB	IBB	HB	SH	SF	WP	BK	IR	ERA					
C. BENDER, L, 1- 1		75	9.0	5	1	1	0	0	0	0	32	3	1	0	0	0	0	0	0	0	1.00	0	1	0	0	
Totals		9.0	5	1	1	0	0	0	0	0	32	3	1	0	0	0	0	0	0	0		27	9	0	0	0

A 1st inning run is all either team can get today as Doc White outduels Chief Bender to even the series.



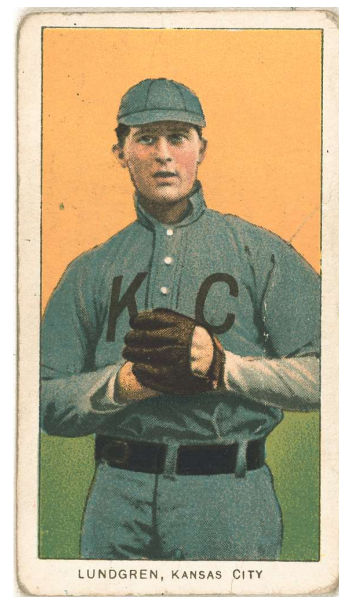
Long Island Islanders at Buffalo Mules																											
Team	1	2	3	4	5	6	7	8	9	R	H	E	LOB	DP													
Long Island Islanders	1	1	0	0	1	0	0	0	1	4	3	0	4	0													
Buffalo Mules	0	1	0	0	0	0	0	0	1	2	7	3	5	0													
Long Island Islanders (Game 5)																											
NAME	FT	AB	R	HR	BI	2B	3B	HR	TB	SO	BB	IBB	HBP	SH	SF	SB	CS	GDP	AVG	PO	A	E	DP	PB			
R. THOMAS, cf		3	1	0	0	0	0	0	0	0	1	0	0	0	0	1	0	0	.176	8	0	0	0				
E. ABBATICCHIO, 2b		3	1	0	0	0	0	0	0	0	1	0	0	0	0	0	0	0	.235	0	8	0	0				
G. BROWNE, rf		2	0	1	1	1	0	0	2	0	1	0	1	0	0	0	1	0	.417	1	1	0	0				
O. PICKERING, lf		3	0	0	0	0	0	0	0	0	1	0	0	0	0	0	1	0	.188	4	0	0	0				
J. GANZEL, 1b		4	0	0	0	0	0	0	0	0	0	0	0	0	0	0	0	0	.050	8	0	0	0				
D. CASEY, 3b		4	1	0	0	0	0	0	0	0	0	0	0	0	0	1	0	0	.000	1	2	0	0				
W. ALPERMAN, ss		4	0	0	0	0	0	0	0	2	0	0	0	0	0	0	0	0	.125	3	1	0	0				
F. BOWERMAN, c		4	1	2	1	0	1	0	4	0	0	0	0	0	0	0	0	0	.200	2	0	0	0	0			
T. SPARKS, p		3	0	0	0	0	0	0	0	0	0	0	0	0	0	0	0	0	.000								
Totals		30	4	3	2	1	1	0	6	2	4	0	1	0	0	2	2	0									
NAME	FT	G	SC	IP	H	R	ER	2B	3B	HR	BF	SO	BB	IBB	HB	SH	SF	WP	BK	IR	ERA	PO	A	E	DP	PB	
T. SPARKS, W, 1-0		65	9.0	7	2	2	2	0	2	0	34	1	1	0	0	0	0	0	0	0	0	3.27	0	0	0	0	
Totals			9.0	7	2	2	0	2	0	0	34	1	1	0	0	0	0	0	0	0	0		27	12	0	0	0
Buffalo Mules (Game 5)																											
NAME	FT	AB	R	HR	BI	2B	3B	HR	TB	SO	BB	IBB	HBP	SH	SF	SB	CS	GDP	AVG	PO	A	E	DP	PB			
S. NICHOLLS, ss		4	0	0	0	0	0	0	0	0	0	0	0	0	0	0	0	0	.238	2	2	1	0				
T. COBB, rf		4	0	1	0	0	0	0	1	0	0	0	0	0	0	0	0	0	.167	3	0	0	0				
S. MAGEE, cf		4	0	1	0	0	0	0	1	0	0	0	0	0	0	0	0	0	.368	3	0	0	0				
N. CLARKE, c		4	1	3	0	0	1	0	5	0	0	0	0	0	0	0	0	0	.500	5	2	0	0	2			
F. JONES, lf		4	0	1	1	0	0	0	1	0	0	0	0	0	0	0	0	0	.200	1	1	0	0				
G. MORIARTY, 3b		3	1	0	0	0	0	0	0	0	1	0	0	0	0	0	0	0	.286	0	1	1	0				
B. UNGLAUB, 1b		4	0	1	1	0	1	0	3	0	0	0	0	0	0	0	0	0	.316	5	1	0	0				
N. Katon, 2b		3	0	0	0	0	0	0	0	1	0	0	0	0	0	0	0	0	.353	7	4	1	0				
E. STRICKLETT, p		3	0	0	0	0	0	0	0	0	0	0	0	0	0	0	0	0	.000								
Totals		33	2	7	2	0	2	0	11	1	1	0	0	0	0	0	0	0									
NAME	FT	G	SC	IP	H	R	ER	2B	3B	HR	BF	SO	BB	IBB	HB	SH	SF	WP	BK	IR	ERA	PO	A	E	DP	PB	
E. STRICKLETT, L, 0-1		69	9.0	3	4	1	1	1	0	0	35	2	4	0	1	0	0	0	0	0	0	1.00	1	0	0	0	
Totals			9.0	3	4	1	1	1	0	0	35	2	4	0	1	0	0	0	0	0	0		27	11	3	0	2

A 1st inning run again gets Long Island going, and they lead from gate to gate to close out the Buffalo portion of the schedule. Three Mule errors grease the skids.



Buffalo Mules at Long Island Islanders																											
Team	1	2	3	4	5	6	7	8	9	R	H	E	LOB	DP													
Buffalo Mules	0	0	0	0	0	3	0	0	0	3	5	5	6	1													
Long Island Islanders	2	2	0	0	0	0	0	0	0	4	4	0	9	0													
Buffalo Mules (Game 6)																											
NAME	FT	AB	R	HRBI	2B	3B	HR	TB	SO	BB	IBB	HBP	SH	SF	SB	CS	GDP	AVG	PO	A	E	DP	PB				
S. NICHOLLS, ss		4	0	0	0	0	0	0	0	0	0	0	0	0	0	0	0	.200	1	7	1	0					
G. MORIARTY, 3b		3	1	0	0	0	0	0	0	1	0	0	0	0	0	0	0	.250	1	0	0	0					
S. MAGEE, cf		3	1	1	0	0	0	1	0	1	0	0	0	0	0	0	0	.364	2	1	0	1					
N. CLARKE, c		4	1	2	2	0	1	4	0	0	0	0	0	0	0	0	0	.500	7	1	1	0	0				
T. COBB, rf		3	0	1	1	0	0	1	0	1	0	0	0	0	0	1	0	.190	0	0	0	0					
F. JONES, lf		3	0	0	0	0	0	0	0	1	0	0	0	0	0	0	0	.167	4	0	0	0					
B. UNGLAUB, 1b		4	0	0	0	0	0	0	1	0	0	0	0	0	0	0	0	.261	5	1	1	0					
N. Katon, 2b		4	0	1	0	0	0	1	0	0	0	0	0	0	0	0	0	.333	4	0	1	1					
B. RAYMOND, p		2	0	0	0	0	0	0	0	1	0	0	0	0	0	0	0	.000									
G. DAVIS, ph		1	0	0	0	0	0	0	1	0	0	0	0	0	0	0	0	.000	0	0	0	0					
Totals		31	3	5	3	0	1	7	2	5	0	0	0	0	0	1	0										
NAME	FT	G	SC	IP	H	R	ER	2B	3B	HR	BF	SO	BB	IBB	HB	SH	SF	WP	BK	IR	ERA						
B. RAYMOND, L, 0-2		68	8.0	4	4	0	0	0	0	0	37	7	5	0	1	0	0	0	0	0	0	1.65	0	0	1	0	
Totals		8.0	4	4	0	0	0	0	0	0	37	7	5	0	1	0	0	0	0	0	0		24	10	5	1	0
Long Island Islanders (Game 6)																											
NAME	FT	AB	R	HRBI	2B	3B	HR	TB	SO	BB	IBB	HBP	SH	SF	SB	CS	GDP	AVG	PO	A	E	DP	PB				
R. THOMAS, cf		5	1	0	0	0	0	0	1	0	0	0	0	0	0	0	0	.136	5	0	0	0					
H. SCHLAFLY, 2b		2	1	0	0	0	0	0	0	0	0	0	0	0	0	0	0	.000	0	1	0	0					
E. ABBATICCHIO, 2b		1	0	0	0	0	0	0	0	1	0	0	0	0	0	0	0	.222	0	5	0	0					
G. BROWNE, rf		3	1	0	0	0	0	0	1	1	0	0	0	0	0	0	0	.333	3	0	0	0					
O. PICKERING, lf		2	0	1	2	0	0	1	1	1	0	1	0	0	1	0	0	.222	1	0	0	0					
J. GANZEL, 1b		2	0	1	1	0	0	1	0	2	0	0	0	0	0	0	0	.091	14	0	0	0					
E. COURTNEY, 3b		3	0	1	1	0	0	1	1	0	0	0	0	0	0	0	0	.143	0	4	0	0					
D. CASEY, 3b		1	0	0	0	0	0	0	0	0	0	0	0	0	0	0	0	.000	0	1	0	0					
W. ALPERMAN, ss		4	0	0	0	0	0	0	1	0	0	0	0	0	0	0	0	.100	2	1	0	0					
F. BOWERMAN, c		4	0	0	0	0	0	0	0	0	0	0	0	0	0	0	0	.158	2	1	0	0	0				
C. LUNDGREN, p		4	1	1	0	0	0	1	2	0	0	0	0	0	0	0	0	.167									
Totals		31	4	4	4	0	0	4	7	5	0	1	0	0	1	0	0										
NAME	FT	G	SC	IP	H	R	ER	2B	3B	HR	BF	SO	BB	IBB	HB	SH	SF	WP	BK	IR	ERA						
C. LUNDGREN, W, 1-0		62	9.0	5	3	3	0	1	0	0	36	2	5	0	0	0	0	0	0	0	0	2.81	0	3	0	0	
Totals		9.0	5	3	3	0	1	0	0	0	36	2	5	0	0	0	0	0	0	0	0		27	16	0	0	

First inning runs again make the difference for the Islanders, who win their 4th championship in five seasons. Five errors doom hard-luck Bugs Raymond, who didn't allow an earned run.



2 Teams	AVG	OBP	SLG	G	AB	H	2B	3B	HR	R	R/G	SO	BB	LOB	SB	CS	SBP
Buffalo Mules	.253	.310	.330	6	194	49	3	3	2	18	3.0	17	16	42	2	3	40.0
Long Island Islanders	.154	.239	.203	6	182	28	5	2	0	17	2.8	24	16	31	7	6	53.8
TCBA Origins 1907 MLB World Series	.205	.276	.269	6	376	77	8	5	2	35	5.8	41	32	73	9	9	50.0

U-TCB908 - TCBA Origins 1907 MLB World Series - Club Pitching

2 Teams	ERA	G	CG	SHO	QS	SV	IP	H	R	ER	HR	SO	BB	HB	WP	BK	OBA
Buffalo Mules	1.20	6	6	0	3	0	52.1	28	17	7	0	24	16	5	1	0	.154
Long Island Islanders	2.89	6	3	1	5	0	53.0	49	18	17	2	17	16	2	0	0	.253
TCBA Origins 1907 MLB World Series	2.05	6	9	1	8	0	105.1	77	35	24	2	41	32	7	1	0	.205

U-TCB908 - TCBA Origins 1907 MLB World Series - Club Fielding

2 Teams	FLD	G	PO	A	E	DP	TP	PB	OSB	OCS	OSBP	OSBA	DER	UER	UERP
Long Island Islanders	.987	6	159	74	3	3	0	1	2	3	40.0	.340	.729	1	5.6
Buffalo Mules	.954	6	157	70	11	3	0	2	7	6	53.8	1.204	.773	10	58.8
TCBA Origins 1907 MLB World Series	.970	6	316	144	14	6	0	3	9	9	50.0	.769	.750	11	31.4

U-TCB908 - TCBA Origins 1907 MLB World Series - Club Scoring

BU	TCBA	Inn	1	2	3	4	5	6	7	8	9	Ext	R	RC	Early	Middle	Late
		Runs	2	3	1	0	2	4	1	4	1	0	18	20.8	6	6	6
		Pct	11	17	6	0	11	22	6	22	6	0		86.7	33	33	33
		OppR	5	3	0	0	1	0	1	1	6	0	17		8	1	8
		Pct	29	18	0	0	6	0	6	6	35	0			47	6	47
		Inn	1	2	3	4	5	6	7	8	9	Ext	R	RC	Early	Middle	Late
LI	TCBA	Runs	5	3	0	0	1	0	1	1	6	0	17	9.8	8	1	8
		Pct	29	18	0	0	6	0	6	6	35	0		172.9	47	6	47
		OppR	2	3	1	0	2	4	1	4	1	0	18		6	6	6
		Pct	11	17	6	0	11	22	6	22	6	0			33	33	33
		Inn	1	2	3	4	5	6	7	8	9	Ext	R	RC	Early	Middle	Late
Tot	Org	Runs	7	6	1	0	3	4	2	5	7	0	35	29.8	14	7	14
		Pct	20	17	3	0	9	11	6	14	20	0		117.5	40	20	40

The 10 players with the highest Batting Average

Name	Tm	Lg	AVG	PA
CLARKE, N.	BU	TCBA	.500	21
MAGEE, S.	BU	TCBA	.364	25
Katon, N.	BU	TCBA	.333	22
UNGLAUB, B.	BU	TCBA	.261	24
MORIARTY, G.	BU	TCBA	.250	26
ABBATICCHIO, E.	LI	TCBA	.222	21
PICKERING, O.	LI	TCBA	.222	21
NICHOLLS, S.	BU	TCBA	.200	26
COBB, T.	BU	TCBA	.190	26
JONES, F.	BU	TCBA	.167	24

The 10 players with the highest Slugging Average

Name	Tm	Lg	SLG	PA
CLARKE, N.	BU	TCBA	.889	21
MAGEE, S.	BU	TCBA	.500	25
UNGLAUB, B.	BU	TCBA	.391	24
Katon, N.	BU	TCBA	.333	22
ABBATICCHIO, E.	LI	TCBA	.333	21
MORIARTY, G.	BU	TCBA	.292	26
PICKERING, O.	LI	TCBA	.263	20
THOMAS, R.	LI	TCBA	.227	25
JONES, F.	BU	TCBA	.222	24
PICKERING, O.	LI	TCBA	.222	21

The 10 players with the highest On Base Percentage

Name	Tm	Lg	OBP	PA
CLARKE, N.	BU	TCBA	.571	21
MAGEE, S.	BU	TCBA	.440	25
Katon, N.	BU	TCBA	.364	22
ABBATICCHIO, E.	LI	TCBA	.333	21
PICKERING, O.	LI	TCBA	.333	21
COBB, T.	BU	TCBA	.308	26
MORIARTY, G.	BU	TCBA	.292	26
JONES, F.	BU	TCBA	.292	24
UNGLAUB, B.	BU	TCBA	.250	24
THOMAS, R.	LI	TCBA	.240	25

The 10 players with the most Runs Created

Name	Tm	Lg	RC	PA
CLARKE, N.	BU	TCBA	9.6	21
MAGEE, S.	BU	TCBA	5.6	25
Katon, N.	BU	TCBA	2.6	22
BROWNE, G.	LI	TCBA	2.6	18
MORIARTY, G.	BU	TCBA	2.3	26
ABBATICCHIO, E.	LI	TCBA	2.1	21
PICKERING, O.	LI	TCBA	1.8	21
JONES, F.	BU	TCBA	1.8	24
UNGLAUB, B.	BU	TCBA	1.6	24
Flick, E.	LI	TCBA	1.4	10

Name	Tm	Lg	W-L	PCT
COAKLEY, A.	BU	TCBA	1-0	1.000
HENLEY, W.	LI	TCBA	1-0	1.000
LUNDGREN, C.	LI	TCBA	1-0	1.000
SPARKS, T.	LI	TCBA	1-0	1.000
WHITE, D.	LI	TCBA	1-0	1.000
BENDER, C.	BU	TCBA	1-1	.500

5 players tied at 0

Name	Tm	Lg	PCT	DEC
COAKLEY, A.	BU	TCBA	1.000	1
HENLEY, W.	LI	TCBA	1.000	1
LUNDGREN, C.	LI	TCBA	1.000	1
SPARKS, T.	LI	TCBA	1.000	1
WHITE, D.	LI	TCBA	1.000	1
BENDER, C.	BU	TCBA	.500	2
EWING, B.	LI	TCBA	.000	2
RAYMOND, B.	BU	TCBA	.000	2
STRICKLETT, E.	BU	TCBA	.000	1

The 8 players with the lowest Earned Run Average

Name	Tm	Lg	ERA	IP
WHITE, D.	LI	TCBA	.00	9.0
BENDER, C.	BU	TCBA	1.00	18.0
COAKLEY, A.	BU	TCBA	1.00	9.0
STRICKLETT, E.	BU	TCBA	1.00	9.0
RAYMOND, B.	BU	TCBA	1.65	16.1
LUNDGREN, C.	LI	TCBA	2.81	16.0
SPARKS, T.	LI	TCBA	3.27	11.0
EWING, B.	LI	TCBA	4.15	13.0

The 8 players with the most Earned Runs Prevented

Name	Tm	Lg	ERPT	IP
BENDER, C.	BU	TCBA	2.1	18.0
WHITE, D.	LI	TCBA	2.1	9.0
COAKLEY, A.	BU	TCBA	1.1	9.0
STRICKLETT, E.	BU	TCBA	1.1	9.0
RAYMOND, B.	BU	TCBA	.7	16.1
LUNDGREN, C.	LI	TCBA	-1.4	16.0
SPARKS, T.	LI	TCBA	-1.5	11.0
EWING, B.	LI	TCBA	-3.0	13.0

The 10 players with the most Innings Pitched

Name	Tm	Lg	IP	G
BENDER, C.	BU	TCBA	18.0	2
RAYMOND, B.	BU	TCBA	16.1	2
LUNDGREN, C.	LI	TCBA	16.0	2
EWING, B.	LI	TCBA	13.0	2
SPARKS, T.	LI	TCBA	11.0	2
COAKLEY, A.	BU	TCBA	9.0	1
STRICKLETT, E.	BU	TCBA	9.0	1
WHITE, D.	LI	TCBA	9.0	1
HENLEY, W.	LI	TCBA	2.2	2
MCDONALD, J.	LI	TCBA	1.0	1

The 9 players with the lowest Opposition Batting Average

Name	Tm	Lg	OBA	IP
STRICKLETT, E.	BU	TCBA	.100	9.0
RAYMOND, B.	BU	TCBA	.136	16.1
COAKLEY, A.	BU	TCBA	.161	9.0
WHITE, D.	LI	TCBA	.161	9.0
BENDER, C.	BU	TCBA	.194	18.0
LUNDGREN, C.	LI	TCBA	.254	16.0
SPARKS, T.	LI	TCBA	.268	11.0
EWING, B.	LI	TCBA	.294	13.0
HENLEY, W.	LI	TCBA	.333	2.2

The 15 players with the most Runs Scored

Name	Tm	Lg	R	PA
MAGEE, S.	BU	TCBA	6	25
MORIARTY, G.	BU	TCBA	5	26
ABBATICCHIO, E.	LI	TCBA	4	21
CLARKE, N.	BU	TCBA	4	21
THOMAS, R.	LI	TCBA	3	25
SCHLAFLY, H.	LI	TCBA	2	5
Flick, E.	LI	TCBA	2	10
BROWNE, G.	LI	TCBA	2	18

7 players tied at 1

The 14 players with the most Runs Batted In

Name	Tm	Lg	RBI	PA
UNGLAUB, B.	BU	TCBA	5	24
CLARKE, N.	BU	TCBA	4	21
PICKERING, O.	LI	TCBA	4	21
JONES, F.	BU	TCBA	3	24
COBB, T.	BU	TCBA	3	26
COURTNEY, E.	LI	TCBA	2	16
BOWERMAN, F.	LI	TCBA	2	20

7 players tied at 1

The 10 players with the most Hits

Name	Tm	Lg	H	PA
CLARKE, N.	BU	TCBA	9	21
MAGEE, S.	BU	TCBA	8	25
Katon, N.	BU	TCBA	7	22
UNGLAUB, B.	BU	TCBA	6	24
MORIARTY, G.	BU	TCBA	6	26
BROWNE, G.	LI	TCBA	5	18
NICHOLLS, S.	BU	TCBA	5	26
ABBATICCHIO, E.	LI	TCBA	4	21
PICKERING, O.	LI	TCBA	4	21
COBB, T.	BU	TCBA	4	26

The 31 players with the most Doubles

Name	Tm	Lg	2B	PA
ABBATICCHIO, E.	LI	TCBA	2	21
Flick, E.	LI	TCBA	1	10
BROWNE, G.	LI	TCBA	1	18
ALPERMAN, W.	LI	TCBA	1	22
JONES, F.	BU	TCBA	1	24
UNGLAUB, B.	BU	TCBA	1	24
MORIARTY, G.	BU	TCBA	1	26

24 players tied at 0

The 31 players with the most Triples

Name	Tm	Lg	3B	PA
CLARKE, N.	BU	TCBA	2	21
BOWERMAN, F.	LI	TCBA	1	20
UNGLAUB, B.	BU	TCBA	1	24
THOMAS, R.	LI	TCBA	1	25

27 players tied at 0

The 31 players with the most Home Runs

Name	Tm	Lg	HR	PA
CLARKE, N.	BU	TCBA	1	21
MAGEE, S.	BU	TCBA	1	25

29 players tied at 0

The 11 players with the most Walks

Name	Tm	Lg	BB	PA
ABBATICCHIO, E.	LI	TCBA	3	21
CLARKE, N.	BU	TCBA	3	21
JONES, F.	BU	TCBA	3	24
MAGEE, S.	BU	TCBA	3	25
THOMAS, R.	LI	TCBA	3	25
COBB, T.	BU	TCBA	3	26

5 players tied at 2

The 10 players with the most Strikeouts

Name	Tm	Lg	SO	PA
UNGLAUB, B.	BU	TCBA	5	24
ALPERMAN, W.	LI	TCBA	4	22
GANZEL, J.	LI	TCBA	4	24
COURTNEY, E.	LI	TCBA	3	16
Katon, N.	BU	TCBA	3	22
LUNDGREN, C.	LI	TCBA	2	6
BROWNE, G.	LI	TCBA	2	18
PICKERING, O.	LI	TCBA	2	21
MAGEE, S.	BU	TCBA	2	25
THOMAS, R.	LI	TCBA	2	25

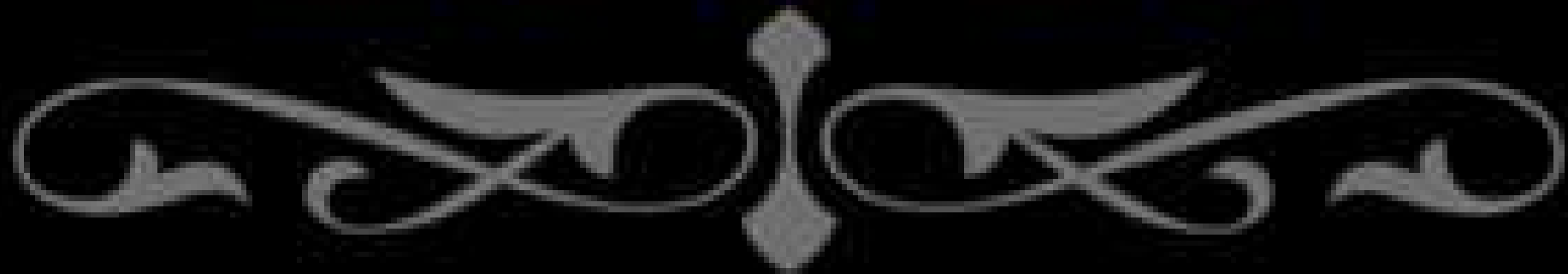
ISLANDERS



The background of the slide is a photograph of an ancient Egyptian wall covered in hieroglyphs. The hieroglyphs are arranged in horizontal registers. In the center, there is a large scene depicting several figures, possibly a family or a group of people, engaged in an activity. The figures are shown in profile, wearing traditional Egyptian clothing. The overall color of the image is a warm, golden-brown hue.

TCBA ORIGINS 1902 – 1908
(proposed through 1920)

19000s



1902 – Turin Mountaineers
1903 – Cleveland Naps
1904 – Long Island Islanders
1905 – Long Island Islanders
1906 – Long Island Islanders
1907 – Cleveland Naps
1908 – Long Island Islanders
1909 -



	W	L	PCT	GB	Mg #	STRK	Last 10	Home	Away	1 Run	X-Inn	TCBA DON	TCBA STU	TCBA BILL
TCBA Origins 1902														
Mahley Division														
Boston Beaneaters	100	55	.645	-	X	W 1	7- 3	52-25	48-30	16-19	9- 2	35-20	26-10	19-13
Hyde Park Vitamen	99	56	.639	1.0	-	L 1	8- 2	54-24	45-32	18-20	7- 8	36-19	25-11	20-12
Long Island Islanders	62	92	.403	37.5	-	L 5	2- 8	27-50	35-42	19-19	1- 8	25-29	14-22	11-21
South Starrucca Ainspans	35	119	.227	64.5	-	W 1	3- 7	15-62	20-57	10-18	5-10	13-41	9-27	6-26
McCorkindale Division														
Bradenton Buckeyes	114	40	.740	-	X	W 3	8- 2	61-16	53-24	21-14	9- 6	24-12	43-11	24- 8
Bergen Barflies	67	87	.435	47.0	-	L 3	5- 5	30-47	37-40	18-24	8- 3	18-18	23-31	16-16
Mexicali Mallards	66	88	.429	48.0	-	W 2	6- 4	32-45	34-43	20-18	3-10	17-19	24-30	13-19
Cleveland Naps	47	107	.305	67.0	-	L 2	1- 9	28-49	19-58	19-21	5- 9	11-25	18-36	9-23
Kirwin Division														
Mimosa Mirthmakers	95	59	.617	-	X	W 5	8- 2	47-30	48-29	19-15	3- 5	17-15	23- 9	36-18
Grand Rapids Wolverines	92	62	.597	3.0	-	L 2	6- 4	43-34	49-28	17- 9	4- 1	21-11	21-11	30-24
Newton Buccs	63	91	.409	32.0	-	L 9	1- 9	27-50	36-41	17-18	8- 4	20-12	10-22	20-34
Waukesha Freeman	59	95	.383	36.0	-	W 2	5- 5	31-46	28-49	15-20	5- 9	14-18	12-20	22-32
Seitz Division														
Turin Mountaineers	96	59	.619	-	X	W 1	5- 5	46-31	50-28	24-19	14- 5	20-12	23- 9	23-13
Wilderness Wraiths	95	60	.613	1.0	-	L 2	7- 3	48-30	47-30	24-13	12- 7	20-12	20-12	21-15
Hereford Highlanders	78	76	.506	17.5	-	W 1	5- 5	37-40	41-36	18-22	6- 8	12-20	18-14	22-14
Buffalo Mules	66	88	.429	29.5	-	W 1	3- 7	29-48	37-40	14-20	3- 7	19-13	13-19	15-21

Our initial season was quite a success. Boston and Turin had to win 1-game playoffs against Hyde Park and Wilderness to advance to the playoffs. Turin then defeated Boston in the first round of the playoffs, winning 4 of the first 5 games. Bradenton also defeated Mimosa in five games. In the World Series, Turin overcame a 3-0 deficit in games, and a 6-0 lead in the 4th game to defeat the Buckeyes in seven games.

U-TCB903 - TCBA Origins 1902 MLB - Standings on Sep. 23, 1902

	W	L	PCT	GB	Mg #	STRK	Last 10	Home	Away	1 Run	X-Inn	TCBA DON	TCBA STU	TCBA BILL
TCBA Origins 1902 MLB														
Don Mahley Division														
Hyde Park Vitamen	77	77	.500	-	X	L 2	7- 3	39-38	38-39	16-24	7- 8	30-24	14-18	15-17
South Starrucca Ainspans	74	80	.481	3.0	-	L 4	4- 6	39-38	35-42	18-25	7-11	27-27	12-20	14-18
Boston Beaneaters	68	86	.442	9.0	-	W 2	5- 5	30-47	38-39	18-26	6-10	29-25	12-20	13-19
Long Island Islanders	64	90	.416	13.0	-	W 4	4- 6	27-50	37-40	14-27	1-11	22-32	11-21	16-16
Stu McCorkindale Division														
Cleveland Naps	100	52	.658	-	X	L 3	5- 5	52-24	48-28	30-10	15- 6	19-13	35-17	27- 9
Mexicali Mallards	89	65	.578	12.0	-	L 1	6- 4	49-28	40-37	23-18	8- 6	25- 7	28-26	19-17
Bradenton Buckeyes	72	81	.471	28.5	-	W 3	6- 4	32-45	40-36	22-14	5- 3	17-15	27-26	16-20
Bergen Barflies	67	86	.438	33.5	-	W 1	3- 7	33-43	34-43	18-22	6- 5	18-14	16-37	17-19
Bill Kirwin Division														
Newton Buccs	100	54	.649	-	X	W 4	9- 1	45-32	55-22	31-11	8- 5	20-12	22-14	39-15
Grand Rapids Wolverines	70	84	.455	30.0	-	L 4	2- 8	31-46	39-38	18-20	5- 7	14-18	17-19	25-29
Mimosa Mirthmakers	70	84	.455	30.0	-	W 1	5- 5	36-41	34-43	22-23	6- 9	17-15	14-22	21-33
Waukesha Freeman	68	86	.442	32.0	-	L 1	4- 6	32-45	36-41	19-26	6- 3	19-13	12-24	23-31
Richard Seitz Division														
Turin Mountaineers	91	63	.591	-	X	L 3	4- 6	46-31	45-32	18-14	5- 3	20-16	18-14	21-11
Hereford Highlanders	78	76	.506	13.0	-	W 3	7- 3	34-43	44-33	22-27	9- 4	19-17	15-17	13-19
Wilderness Wraiths	75	79	.487	16.0	-	W 2	5- 5	37-40	38-39	21-24	8- 8	18-18	15-17	16-16
Buffalo Mules	67	87	.435	24.0	-	L 2	4- 6	31-46	36-41	27-26	8-11	19-17	16-16	13-19

Defending champion Turin was the only team to return to the playoffs. 100-game winner Cleveland defeated .500 Hyde Park in 5 games in the first round. Turin returned to the World Series, defeating 100-game winning Newton in six games, but lost to new champion Cleveland in a five game final showdown.

	W	L	PCT	GB	Mg #	STRK	Last 10	Home	Away	1 Run	X-Inn	TCBA DON	TCBA STU	TCBA BILL
TCBA Origins 1903 MLB														
Mahley Division														
Long Island Islanders	108	44	.711	-	X	W 2	8- 2	55-22	53-22	27-19	13- 5	39-13	21-11	29- 7
South Starrucca Ainspans	94	59	.614	14.5	-	L 2	5- 5	47-29	47-30	23-16	6- 7	30-23	21-11	22-14
Hyde Park Vitamen	75	78	.490	33.5	-	L 1	4- 6	40-36	35-42	29-21	5- 7	23-30	18-14	14-22
Boston Beaneaters	51	103	.331	58.0	-	W 1	4- 6	23-54	28-49	16-19	5- 6	14-40	13-19	12-24
McCorkindale Division														
Mexicali Mallards	95	59	.617	-	X	W 1	6- 4	52-25	43-34	28-21	7- 5	16-16	38-16	17-15
Cleveland Naps	86	68	.558	9.0	-	L 1	8- 2	42-35	44-33	22-16	6- 1	15-17	28-26	23- 9
Bradenton Buckeyes	73	81	.474	22.0	-	W 1	3- 7	38-39	35-42	18-23	4- 5	15-17	26-28	17-15
Bergen Barflies	56	98	.364	39.0	-	L 1	3- 7	27-50	29-48	16-27	5- 8	9-23	16-38	15-17
Kirwin Division														
Newton Buccs	91	63	.591	-	X	L 4	5- 5	45-32	46-31	20-24	10-10	20-16	18-14	34-20
Mimosa Mirthmakers	81	73	.526	10.0	-	W 4	6- 4	42-35	39-38	22-19	6- 8	19-17	14-18	31-23
Grand Rapids Wolverines	67	87	.435	24.0	-	L 1	4- 6	36-41	31-46	19-19	4- 8	14-22	13-19	23-31
Waukesha Freeman	59	95	.383	32.0	-	W 1	5- 5	31-46	28-49	17-33	10-10	14-22	11-21	20-34
Seitz Division														
Hereford Highlanders	84	70	.545	-	X	W 1	6- 4	46-31	38-39	23-17	4- 5	16-16	20-16	20-12
Turin Mountaineers	82	72	.532	2.0	-	W 4	6- 4	44-33	38-39	21-20	11- 8	20-12	16-20	14-18
Wilderness Wraiths	74	80	.481	10.0	-	L 1	6- 4	42-35	32-45	23-22	7- 5	12-20	20-16	17-15
Buffalo Mules	54	100	.351	30.0	-	L 4	2- 8	27-50	27-50	17-25	4- 9	8-24	13-23	10-22

Newton was our only returning playoff contestant, joined by 108-game winning Long Island, Mexicali and Hereford. The Islanders defeated the Highlanders in six games, and the Mallards defeated the Buccs in six games, winning the final, 1-0, in the 10th inning. Long Island prevailed in the World Series, with a walk-off win in the 13th inning of the sixth game.

	W	L	PCT	GB	Mg #	STRK	Last 10	Home	Away	1 Run	X-Inn	TCBA DON	TCBA STU	TCBA BILL
TCBA Origins														
Mahley Division														
Long Island Islanders	101	53	.656	-	X	W 5	7- 3	55-22	46-31	29-27	11- 6	38-16	16-16	23-13
South Starrucca Ainspans	91	63	.591	10.0	-	L 1	5- 5	47-30	44-33	26-19	6- 9	31-23	14-18	24-12
Boston Beaneaters	74	80	.481	27.0	-	W 1	7- 3	39-38	35-42	22-28	8- 8	20-34	10-22	27- 9
Hyde Park Vitamen	64	90	.416	37.0	-	L 7	1- 9	31-46	33-44	21-26	8-10	19-35	8-24	23-13
McCorkindale Division														
Bradenton Buckeyes	97	57	.630	-	X	L 2	6- 4	42-35	55-22	28-15	10- 6	20-12	28-26	23- 9
Bergen Barflies	91	62	.595	5.5	-	W 1	8- 2	45-31	46-31	22-26	7-10	18-14	30-24	23- 8
Mexicali Mallards	89	64	.582	7.5	-	L 1	3- 7	46-30	43-34	33-30	14- 7	22-10	26-28	19-12
Cleveland Naps	84	70	.545	13.0	-	W 2	3- 7	39-38	45-32	24-23	13-10	20-12	24-30	18-14
Kirwin Division														
Newton Buccs	88	65	.575	-	X	W 1	7- 3	45-32	43-33	24-20	8- 7	18-18	14-17	32-22
Waukesha Freeman	74	80	.481	14.5	-	W 2	5- 5	37-40	37-40	27-21	11- 7	12-24	11-21	29-25
Grand Rapids Wolverines	58	96	.377	30.5	-	L 1	4- 6	31-46	27-50	18-26	6-10	9-27	8-24	26-28
Mimosa Mirthmakers	52	101	.340	36.0	-	L 2	4- 6	26-51	26-50	15-21	5- 7	8-28	10-21	21-33
Seitz Division														
Turin Mountaineers	88	66	.571	-	X	L 2	4- 6	47-30	41-36	28-18	7- 8	19-13	15-21	15-17
Wilderness Wraiths	78	76	.506	10.0	-	W 2	8- 2	47-30	31-46	25-26	8-10	13-19	17-19	17-15
Hereford Highlanders	66	88	.429	22.0	-	W 6	7- 3	30-47	36-41	18-25	7- 9	12-20	15-21	11-21
Buffalo Mules	35	119	.227	53.0	-	L 6	1- 9	15-62	20-57	15-24	4- 9	7-25	7-29	11-21

Defending champion Long Island and Newton returned to the playoffs, joined by Bradenton and Turin. Bradenton avenged their 1902 World Series loss by defeating Turin in 5 games while Long Island triumphed over Newton in 6 games. The Islanders repeated as Champions with six-game win in the World Series.

	W	L	PCT	GB	Mg #	STRK	Last 10	Home	Away	1 Run	X-Inn	TCBA DON	TCBA STU	TCBA BILL
TCBA Origins 1905 MLB														
Mahley Division														
Long Island Islanders	103	51	.669	-	X	L 1	6- 4	49-28	54-23	26-20	7- 5	33-21	21-11	22-10
South Starrucca Ainspans	79	75	.513	24.0	-	W 1	3- 7	42-35	37-40	33-24	11- 6	32-22	19-13	15-17
Hyde Park Vitamen	74	80	.481	29.0	-	W 1	5- 5	40-37	34-43	17-24	4- 6	18-36	18-14	16-16
Boston Beaneaters	72	81	.471	30.5	-	L 1	6- 4	40-37	32-44	29-23	8-10	25-29	17-15	17-14
McCorkindale Division														
Bergen Barflies	93	59	.612	-	X	L 1	7- 3	54-22	39-37	25-23	7- 5	17-15	37-15	21-15
Bradenton Buckeyes	71	83	.461	23.0	-	L 1	5- 5	40-37	31-46	23-34	7- 5	12-20	24-30	19-17
Mexicali Mallards	60	92	.395	33.0	-	L 1	5- 5	33-43	27-49	24-18	4- 8	12-20	24-29	15-21
Cleveland Naps	56	97	.366	37.5	-	W 1	3- 7	29-48	27-49	18-22	7- 6	12-20	21-32	13-23
Kirwin Division														
Waukesha Freeman	93	61	.604	-	X	W 1	3- 7	47-30	46-31	26-21	9- 8	17-15	19-17	35-19
Pittsburgh Rebels	83	71	.539	10.0	-	L 1	7- 3	47-30	36-41	26-37	4-16	16-16	24-12	30-24
Mimosa Mirthmakers	77	76	.503	15.5	-	L 1	7- 3	39-37	38-39	25-22	5- 4	13-18	20-16	28-26
Grand Rapids Wolverines	53	101	.344	40.0	-	W 1	3- 7	28-49	25-52	17-30	9- 8	11-21	13-23	15-39
Seitz Division														
Hereford Highlanders	85	69	.552	-	X	W 3	8- 2	40-37	45-32	26-23	10- 4	21-15	21-11	15-17
Buffalo Mules	84	70	.545	1.0	-	L 2	5- 5	40-37	44-33	17-22	8- 8	19-17	15-17	18-14
Turin Mountaineers	78	75	.510	6.5	-	W 2	6- 4	38-38	40-37	31-18	8- 7	14-22	17-14	16-16
Wilderness Wraiths	67	87	.435	18.0	-	L 2	2- 8	32-45	35-42	21-23	6- 8	15-21	21-11	14-18

Two-time defending champion Long Island was the only returning playoff team. Hereford needed to win a rainout makeup game to qualify and were joined by Bergen and Waukesha. The Islanders eliminated Hereford in five games while Waukesha triumphed over Bergen in six games. Long Island won their third consecutive championship by defeating Waukesha in the World Series. Down 3 games to 1, the Freeman forced a 7th game, only to be shutout by a 4-0 count.

	W	L	PCT	GB	Mg #	STRK	Last 10	Home	Away	1 Run	X-Inn	TCBA DON	TCBA STU	TCBA BILL
TCBA Origins 1906 MLB														
Don Mahley Division														
Long Island Islanders	99	55	.643	-	X	W 5	8- 2	51-26	48-29	32-18	8- 7	35-19	18-14	18-14
Hyde Park Vitamen	96	58	.623	3.0	-	W 2	4- 6	51-26	45-32	34-24	15-11	30-24	21-11	21-11
Boston Beaneaters	95	58	.621	3.5	-	L 2	7- 3	49-28	46-30	26-22	8- 8	33-21	16-16	26- 5
South Starrucca Ainspans	51	103	.331	48.0	-	L 6	1- 9	24-53	27-50	19-29	7- 8	10-44	13-19	16-16
Stu McCorkindale Division														
Cleveland Naps	99	55	.643	-	X	W 2	5- 5	50-27	49-28	30-12	12- 8	22-10	30-24	23-13
Bergen Barflies	97	57	.630	2.0	-	W 2	6- 4	50-27	47-30	27-14	11- 4	16-16	34-20	22-14
Mexicali Mallards	75	79	.487	24.0	-	L 2	6- 4	38-39	37-40	24-25	13-10	12-20	25-29	21-15
Bradenton Buckeyes	58	95	.379	40.5	-	L 2	3- 7	28-49	30-46	15-21	7-10	10-22	19-35	14-21
Bill Kirwin Division														
Mimosa Mirthmakers	93	58	.616	-	X	L 1	3- 7	48-26	45-32	27-21	9- 4	17-14	21-14	36-17
Waukesha Freeman	85	69	.552	9.5	-	W 1	7- 3	49-28	36-41	17-22	5- 6	14-18	23-13	34-20
Grand Rapids Wolverines	46	107	.301	48.0	-	L 1	6- 4	22-55	24-52	12-27	2-10	11-21	9-27	19-34
Pittsburgh Rebels	44	110	.286	50.5	-	W 1	3- 7	24-53	20-57	13-30	3-14	4-28	10-26	18-36
Richard Seitz Division														
Buffalo Mules	89	65	.578	-	X	W 7	8- 2	50-27	39-38	18-20	9- 6	20-16	17-15	24- 8
Hereford Highlanders	87	67	.565	2.0	-	W 5	8- 2	45-32	42-35	20-26	8- 9	15-21	17-15	22-10
Wilderness Wraiths	72	82	.468	17.0	-	L 5	2- 8	35-42	37-40	26-21	11- 9	19-17	6-26	18-14
Turin Mountaineers	43	111	.279	46.0	-	L 7	2- 8	20-57	23-54	14-22	6-10	6-30	7-25	12-20

Three-time defending champion Long Island was the only returning playoff team, joined by Cleveland, Mimosa and Buffalo. The Islanders defeated Mimosa in 5 games. Cleveland won the Lake Erie semi-final by defeating Buffalo in 5 games. Long Island held a 3-games to 2 lead in the World Series, but Cleveland won game six, 4-1 at home, setting up the 7th game, which would go 10 innings before the Naps prevailed, 2-1, breaking the Islander streak of championships.

	W	L	PCT	GB	Mg #	STRK	Last 10	Home	Away	1 Run	X-Inn	TCBA DON	TCBA STU	TCBA BILL	TCBA RICH
TCBA Origins 1907 MLB															
Don Mahley Division															
Long Island Islanders	92	62	.597	-	X	L 1	5-5	47-30	45-32	25-27	11-6	33-21	23-13	17-15	19-13
Hyde Park Vitamen	82	72	.532	10.0	-	W 1	3-7	36-41	46-31	29-19	7-7	30-24	17-19	13-19	22-10
Western Marvels	59	95	.383	33.0	-	W 4	6-4	27-50	32-45	23-28	8-9	21-33	17-19	10-22	11-21
South Starrucca Ainspans	58	96	.377	34.0	-	L 4	6-4	25-52	33-44	24-21	10-5	24-30	11-25	12-20	11-21
Stu McCorkindale Division															
Cleveland Naps	90	63	.588	-	X	L 1	9-1	41-35	49-28	27-21	8-8	20-16	39-14	12-20	19-13
Bradenton Buckeyes	88	66	.571	2.5	-	W 4	4-6	37-40	51-26	22-20	12-9	21-15	29-25	21-11	17-15
Bergen Barflies	79	74	.516	11.0	-	L 4	4-6	43-34	36-40	24-22	8-9	17-19	23-30	16-16	23-9
Mexicali Mallards	64	90	.416	26.5	-	W 1	3-7	33-44	31-46	25-27	13-15	18-18	16-38	12-20	18-14
Bill Kirwin Division															
Mimosa Mirthmakers	97	57	.630	-	X	W 6	7-3	50-27	47-30	26-25	9-8	23-9	19-13	32-22	23-13
Waukesha Freeman	96	58	.623	1.0	-	W 4	7-3	52-25	44-33	23-19	7-5	23-9	19-13	30-24	24-12
Grand Rapids Wolverines	94	60	.610	3.0	-	L 4	4-6	49-28	45-32	25-18	6-3	18-14	21-11	31-23	24-12
Pittsburgh Rebels	50	104	.325	47.0	-	L 5	2-8	23-54	27-50	18-25	6-15	12-20	8-24	15-39	15-21
Richard Seitz Division															
Buffalo Mules	83	71	.539	-	X	W 5	8-2	42-35	41-36	25-19	7-9	19-13	15-17	14-22	35-19
Hereford Highlanders	81	73	.526	2.0	-	W 3	6-4	47-30	34-43	23-20	6-3	17-15	17-15	18-18	29-25
Turin Mountaineers	78	76	.506	5.0	-	L 3	6-4	43-34	35-42	26-29	8-4	15-17	13-19	18-18	32-22
London Tecumsehs	40	114	.260	43.0	-	L 10	0-10	23-54	17-60	18-43	1-12	14-18	6-26	8-28	12-42

All four Division champs returned from last year.

III

9

III

O

S





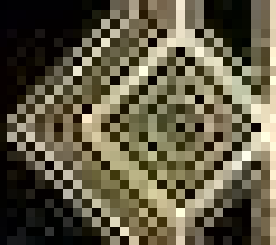
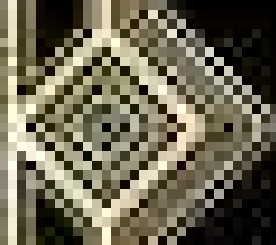
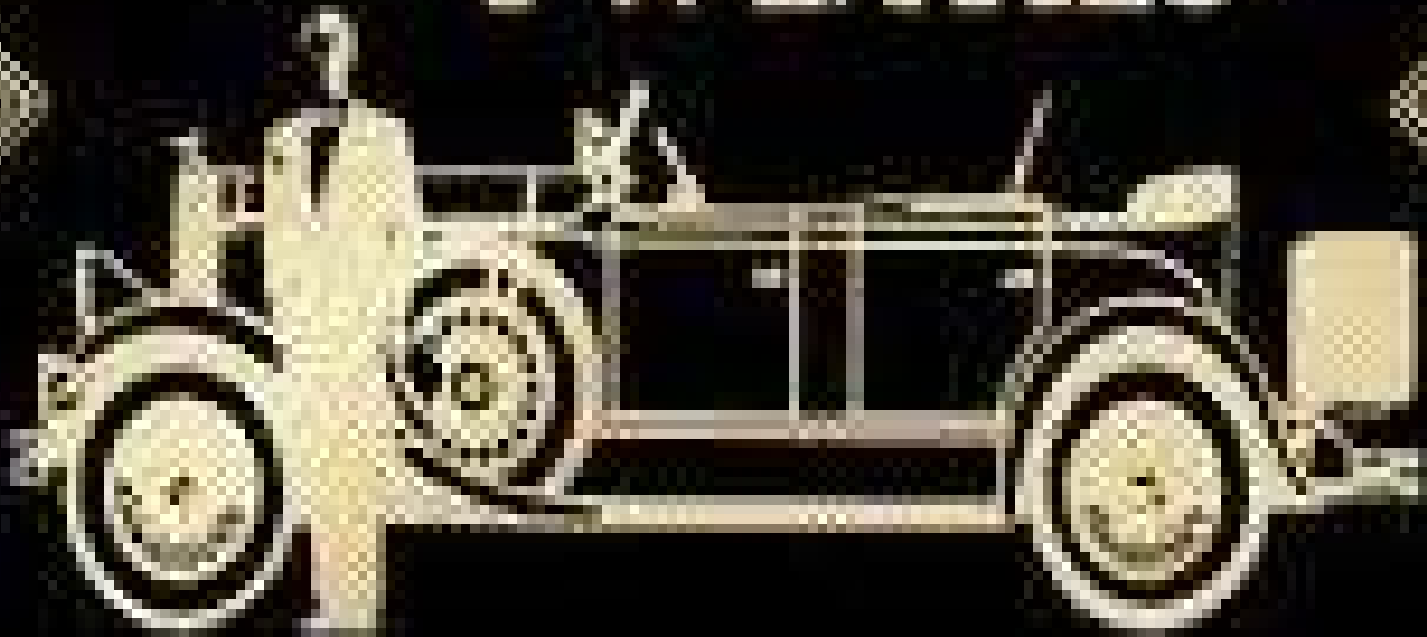
UNFILLED



**TCBA GOLD
1921-1943**

The Roaring

TWENTIES





1921 – Long Island Islanders
1922 – Bergen Barflies
1923 – Siouxland Explorers
1924 – Bergen Barflies
1925 – Mimosa Mirthmakers
1926 – Fortney Gators
1927 – Bergen Barflies
1928 – Bergen Barflies
1929 – Long Island Islanders

MARSHALL ISLANDS

1930 ▶ DECADE OF THE GREAT DEPRESSION • 1939



THE 20TH CENTURY

60

ECONOMIC DEPRESSION ENGLUFS THE WORLD

1930s



1930 – Kilkenny Gaelics

1931 – Long Island Islanders

1932 – South Starrucca Ainspans

1933 – Portsmouth Pubdwellers

1934 – Hyde Park VitaMen

1935 – Mimosa Mirthmakers

1936 – Fortney Gators

1937 - South Starrucca Ainspans

1938 – Kilkenny Gaelics

1939 – South Starrucca Ainspans

1948

An aerial, black and white photograph of a baseball field during a game. The field is diamond-shaped with a pitcher's mound in the center. Several players are visible on the field, including one in the pitcher's circle and others on the bases and in the outfield. The stands are filled with spectators. In the background, there are several large signs or advertisements on the outfield fence. The text is overlaid on the right side of the image.

1940 – Chesapeake Regnads
1941 – Bergen Barflies
1942 – Sacramento Solons
1943 – South Starrucca Ainspans



1944-1974
TCBA
YESTERDAY

“The best thing about baseball today is its yesterdays.” Lawrence Ritter

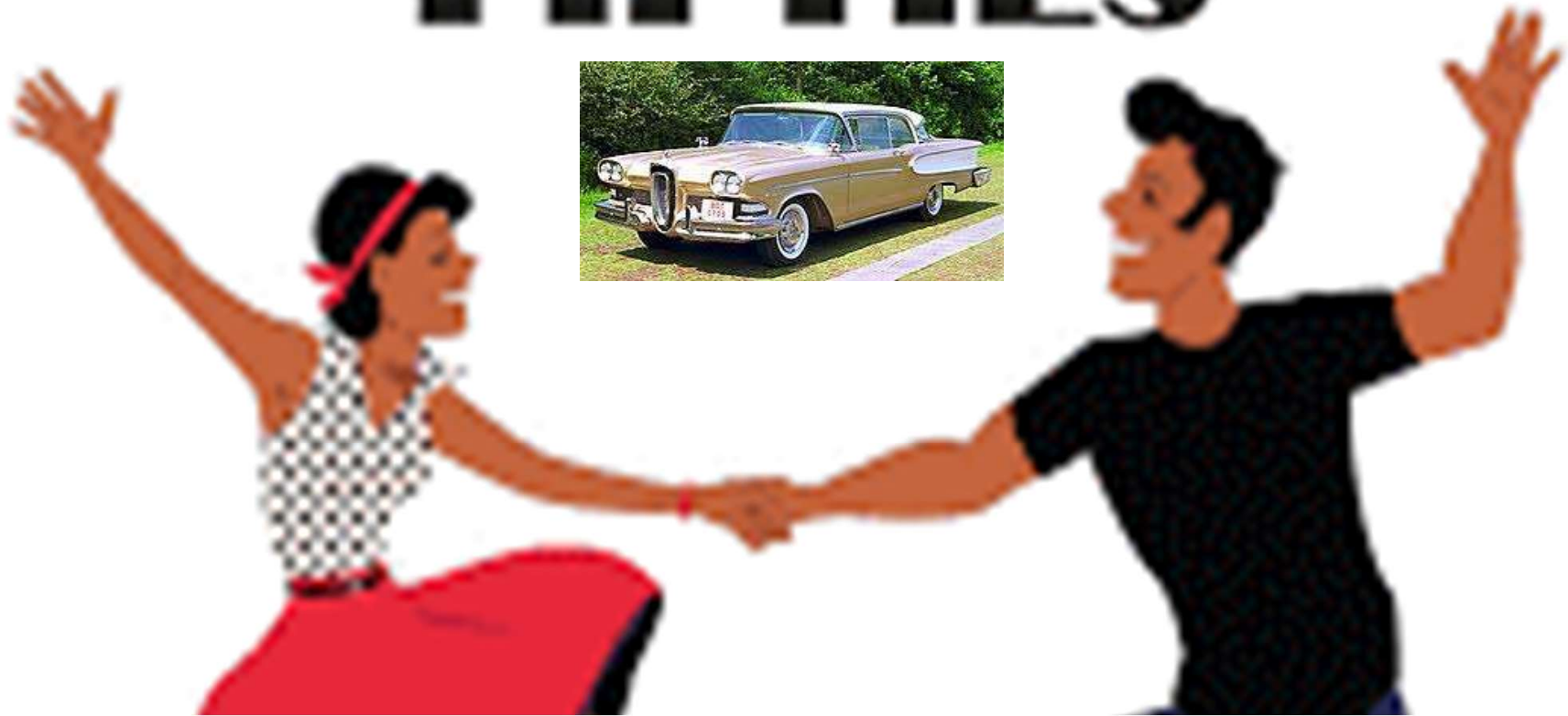
1940s





1944 – Long Island Islanders
1945 – Mexicali Mallards
1946 – Sacramento Solons
1947 – Mimosa Mirthmakers
1948 – Bradenton Buckeyes
1949 – Bradenton Buckeyes

THE FABULOUS FIFTIES





1950 – South Starrucca Ainspans

1951 – Mimosa Mirthmakers

1952 – Fortney Gators

1953 – Fortney Gators

1954 – South Starrucca Ainspans

1955 – Norfolk Pilots

1956 – Hyde Park VitaMen

1957 – Hyde Park VitaMen

1958 – Hyde Park VitaMen

1959 – Bradenton Buckeyes





- 1960 – Bradenton Buckeyes**
- 1961 – Wilderness Wraiths**
- 1962 – South Starrucca Ainspans**
- 1963 – South Starrucca Ainspans**
- 1964 – Mimosa Mirthmakers**
- 1965 – Bergen Barflies**
- 1966 – South Starrucca Ainspans**
- 1967 – South Starrucca Ainspans**
- 1968 – Long Island Islanders**
- 1969 – Cleveland Spiders**

ZOO

An aerial photograph of a baseball stadium, showing the green field, brown dirt base paths, and the surrounding seating areas filled with spectators. The stadium lights are visible in the background. Overlaid on the field is a list of teams and their years.

1970 – Fortney Gators
1971 – Newmarket Eh's
1972 – Hyde Park VitaMen
1973 – Long Island Islanders
1974 – Norfolk Pilots

TCBA



1975 - 2020





1975 – Harbor Beach Combers
1976 – Hyde Park Vitamen
1977 – Shiloh Spurs
1978 – Greylock Gators
1979 – Rockford Patriots

TIME

8

0

S



1980 – Norfolk Pilots **1985 – Long Island Islanders**
1981 – Winnebago Indians **1986 – Meadowlands Spartans**
1982 – Winnebago Indians **1987 – Long Island Islanders**
1983 – Long Island Islanders **1988 – Scranton Spanish Flies**
1984 – Mimosa Mirthmakers **1989 – Beacon Braves**

1990s



1990 – Scranton Spanish Flies	1995 – Horseshoe Bay Polos
1991 – Scranton Spanish Flies	1996 – Bethesda Bambinos
1992 – Bethesda Bambinos	1997 – Rapidan Rapids
1993 – Scranton Spanish Flies	1998 – Newark Eagles
1994 – Scranton Spanish Flies	1999 – Newark Eagles



2000's



2000 – Long Island Islanders

2001 – Farmington Rats

2002 – Scranton Spanish Flies

2003 – Horseshoe Bay Polos

2004 – Newark Eagles

2005 – Pennsylvania Keystones

2006 – Farmington Rats

2007 – Long Island Islanders

2008 – Horseshoe Bay Polos

2009 – Silver Spring Senators



the
2010s

DECADE IN REVIEW



2010 – Scranton Spanish Flies **2015- Scranton Spanish Flies**
2011 – Fargo Fungoes **2016 – Rochester Cheetahs**
2012 – Bethesda Bambinos **2017 – Beacon Braves**
2013 – Bethesda Bambinos **2018 – Bethesda Bambinos**
2014 – Newark Eagles **2019 – Long Island Islanders**

THE

2020

S

2020-Newark Eagles
2021-(twelve team playoff)
Fargo – Eastport Finals



MEET THE

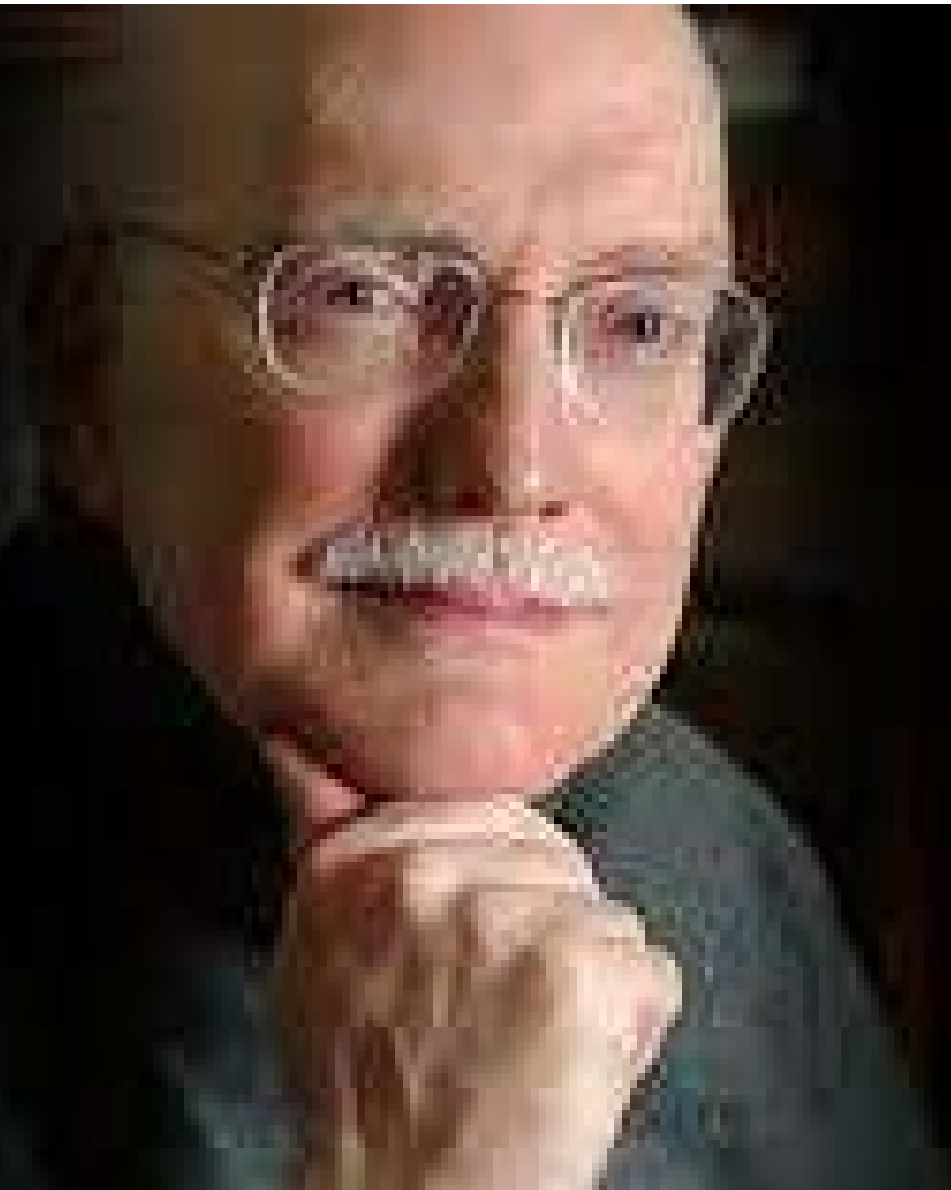
MANAGERS

MAHLEY DIVISION

a tribute to

DON MAHLEY

June 16, 1942 - March 1, 2014



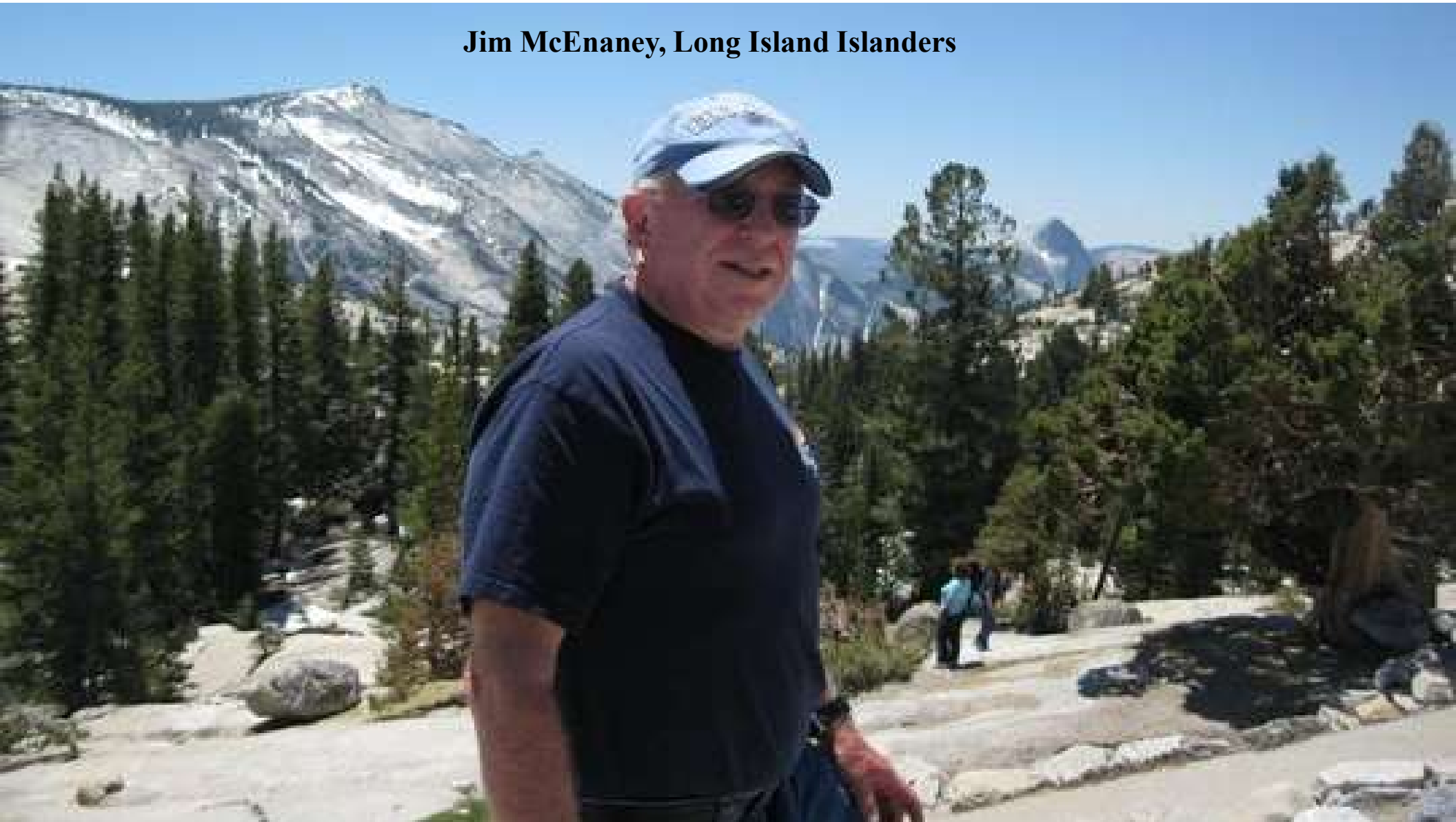


Bob Braun
Hyde Park
Vitamen

Marty
Fiehl
South
Starrucca
Ainspans



Jim McEnaney, Long Island Islanders





L.J. Honeycutt
Western Marvels



Jim LaFargue, Boston Beaneaters



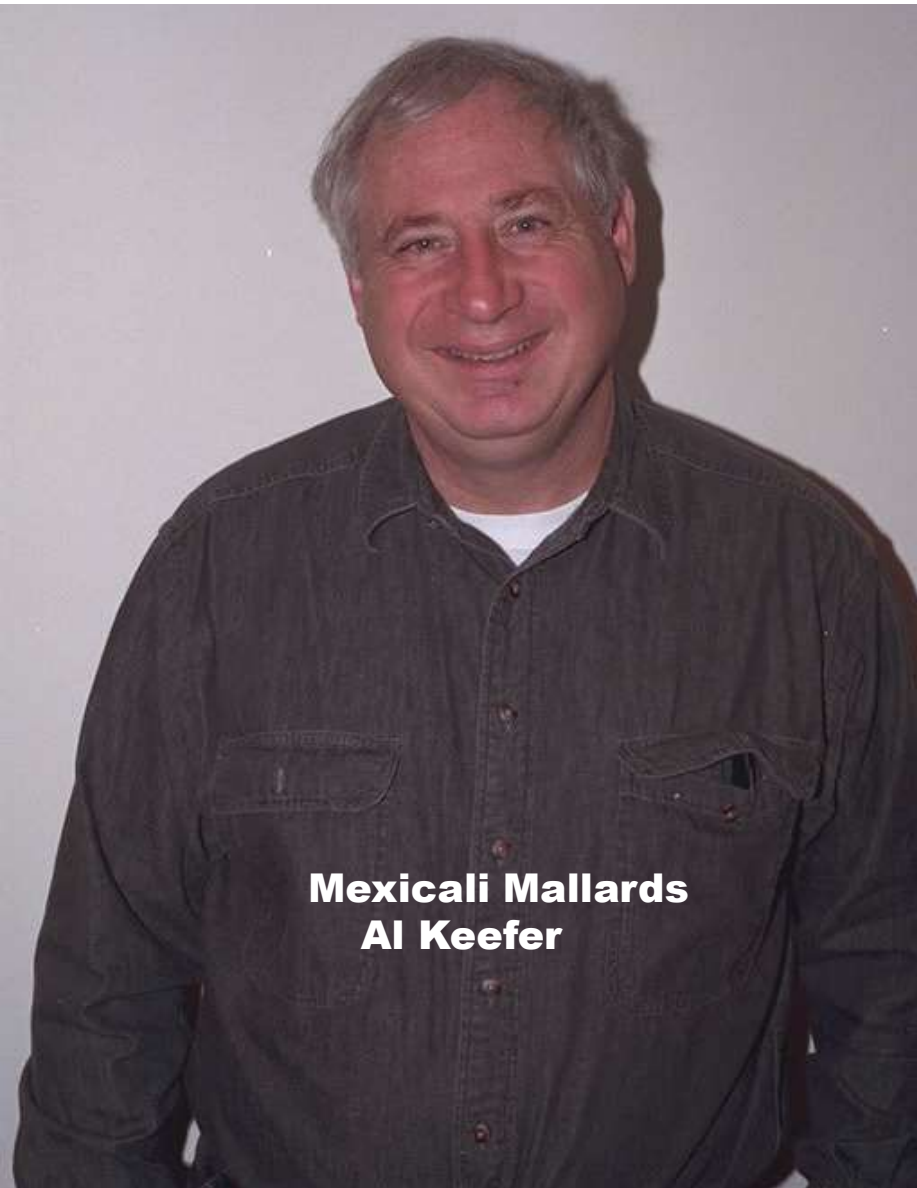
**McCORKINDALE
DIVISION**

**Bradenton Buckeyes
Bob Wood**



**Cleveland Naps
Gerry Hobbs**





Mexicali Mallards
Al Keefer



Bergen Barflies
Tom Meade

**BORN**

1945

DIED

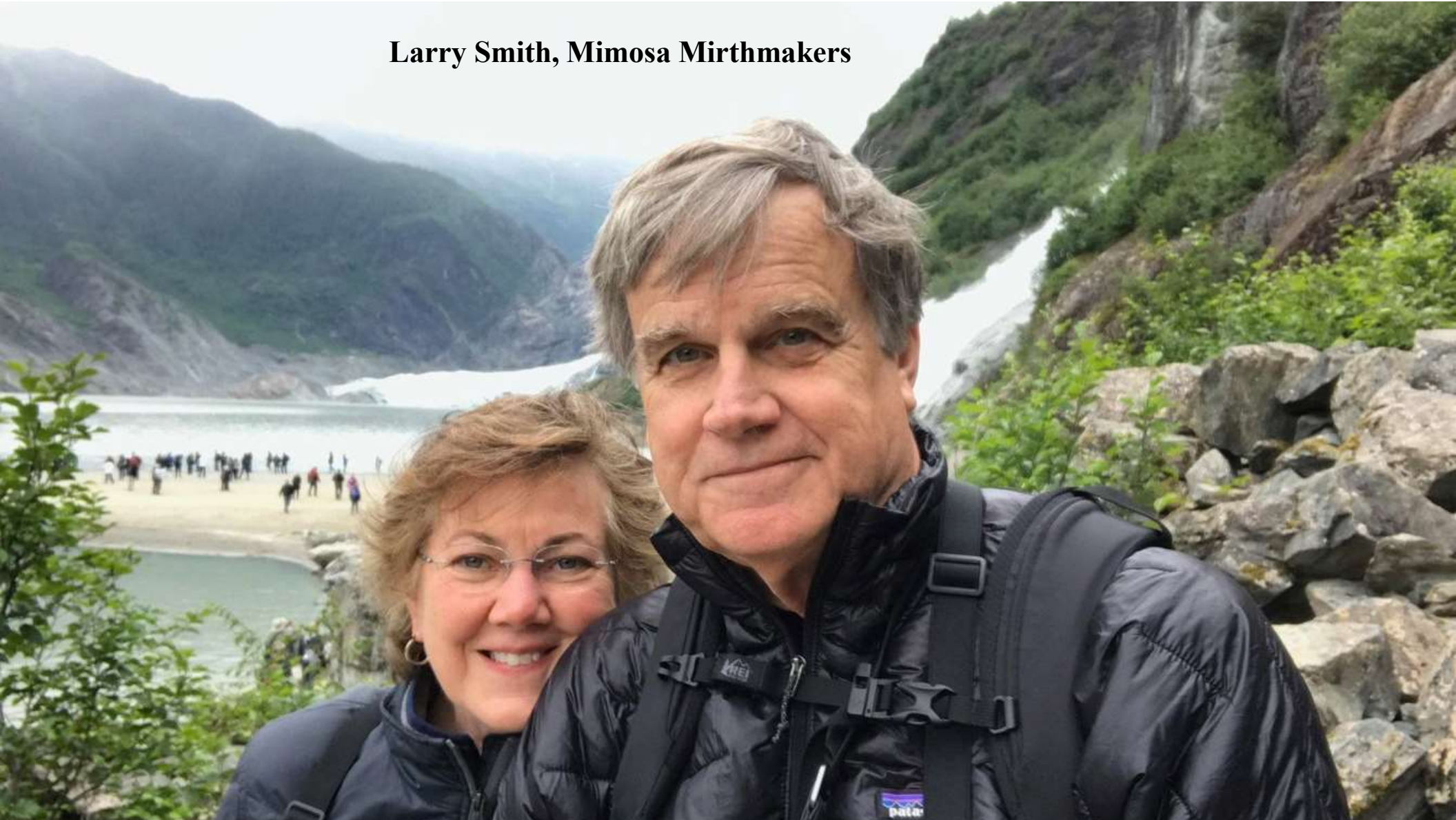
2015

KIRWIN DIVISION

William 'Bill' Kirwin Sr. of Kennett Square William "Bill" Kirwin, Sr. passed away peacefully on Saturday, July 18 at 6:45 p.m. Bill was born in Philadelphia on March 16, 1945. He graduated from Cardinal Dougherty High School. He was drafted by the U.S. Army in 1966 and served as an interrogator in Vietnam in 1967. Upon an Honorable completion of the Army, Bill worked for Beneficial Bank for numerous years becoming manager. Bill managed the Birch Inn in Kennett Square for 15+ yrs. and also managed Mr. Storage in Philadelphia. Bill was preceded in death by his mother and father Lillian and Albert Polidori. Bill is survived by his son William and his fiancé Tristin Chew of Kennett Square, Kenny of Virginia Beach, daughter Kelly of Wilmington, Del., and cousins Barbara Ann, Chuck, and Patty Stienmetz of Northeast Philadelphia. William's passions were his beloved granddaughter Ava, the Phillies and Eagles, his grandchildren Zoe and Troy and numerous friends. A gathering will be held Sat. Aug. 1 at VFW Post 5467, 704 W. Baltimore Pike, Kennett Square.

Published by The Daily Local from Jul. 23 to Jul. 26, 2015.

Larry Smith, Mimosa Mirthmakers



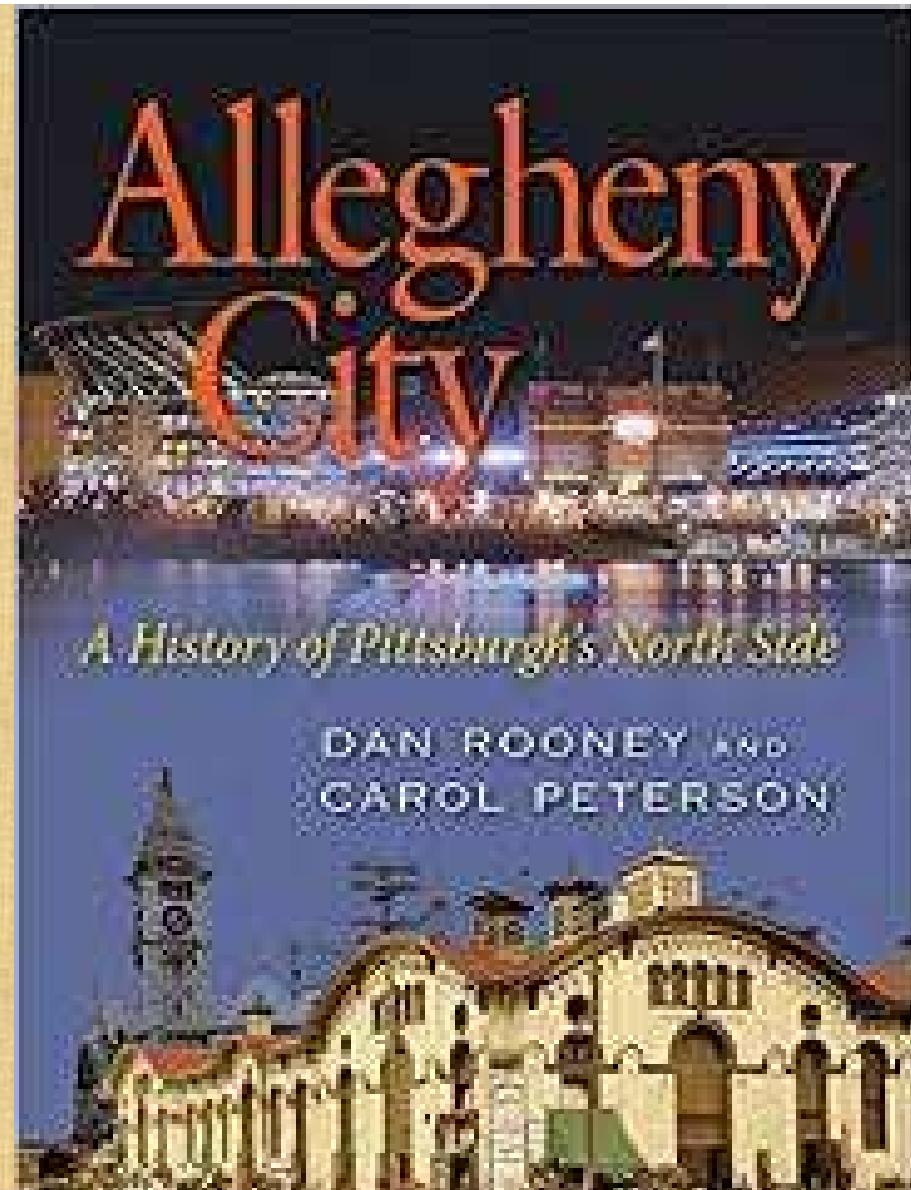


Ken Sajdak
Waukesha Freeman

Jeff Sajdak
Siouxland Explorers



Joe Elinich
Pittsburgh
Alleghenies





**SEITZ
DIVISION**

Aaron Anderson
Buffalo Mules



Steve Lyon
Hereford Highlanders





Gary Sibley
Wilderness Wraiths



Ed Hebscher
London Tecumsehs



**Krakov Kayakers
J.R. Richardson**