

Precursor of TCBA Today

ORIGINS
1910



ORIGINS 1910

feeble



	W	L	PCT	GB	Mg #	STRK	Last 10	Home	Away	1 Run	X-Inn
TCBA Origins 1908 MLB											
Don Mahley Division											
South Starrucca Ainspans	98	56	.636	-	X	L 2	5-5	54-23	44-33	38-24	12-11
Cleveland Spiders	85	69	.552	13.0	-	W 2	6-4	52-25	33-44	40-20	17-8
Hyde Park Vitamen	49	105	.318	49.0	-	L 2	6-4	24-53	25-52	19-29	6-7
Long Island Islanders	37	117	.240	61.0	-	W 2	3-7	20-57	17-60	11-29	5-9
Stu McCorkindale Division											
Bergen Barflies	88	66	.571	-	X	W 1	6-4	48-29	40-37	33-24	14-6
Cleveland Naps	87	67	.565	1.0	-	L 2	6-4	43-34	44-33	24-24	7-8
Bradenton Buckeyes	83	71	.539	5.0	-	W 2	4-6	45-32	38-39	30-31	7-15
Mexicali Mallards	69	85	.448	19.0	-	L 1	4-6	34-43	35-42	27-28	6-4
Bill Kirwin Division											
Mimosa Mirthmakers	96	58	.623	-	X	W 1	5-5	53-24	43-34	33-25	5-7
Grand Rapids Wolverines	92	62	.597	4.0	-	W 2	6-4	50-27	42-35	31-26	11-8
Waukesha Freeman	85	69	.552	11.0	-	L 1	5-5	50-27	35-42	22-23	10-10
Pittsburgh Rebels	79	75	.513	17.0	-	L 2	4-6	40-37	39-38	27-28	6-10
Richard Seitz Division											
Buffalo Mules	86	68	.558	-	X	W 1	5-5	45-32	41-36	34-30	10-10
Turin Mountaineers	79	75	.513	7.0	-	L 1	5-5	42-35	37-40	23-36	12-12
London Tecumsehs	66	88	.429	20.0	-	L 1	4-6	33-44	33-44	31-30	13-7
Hereford Highlanders	53	101	.344	33.0	-	W 1	6-4	26-51	27-50	16-32	5-14





O
R
I
G
I
N
S

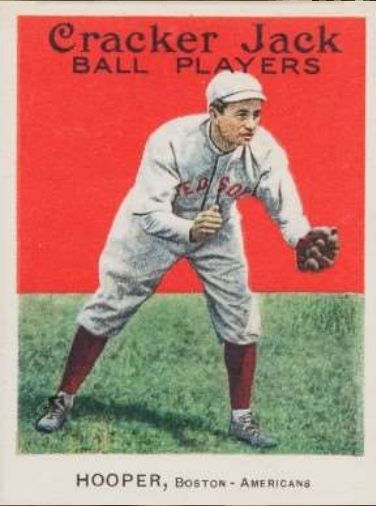
DRAFT

1910

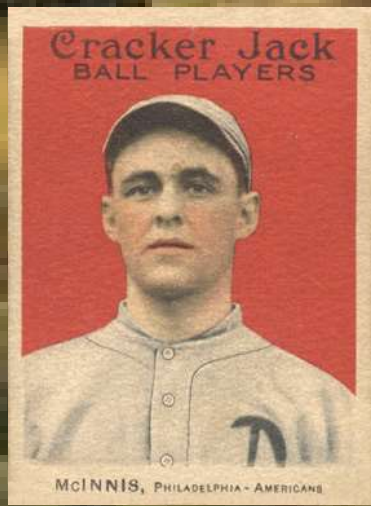
FEEBLE FOUR

- 1-Hyde Park Vitamen
- 2-Hereford Highlanders
- 3-London Tecumsehs
- 4-Long Island Islanders

- ### THE OTHERS
- 5-MEXICALI
 - 6-PITTSBURGH
 - 7-TURIN
 - 8-BRADENTON
 - 9-CLEVELAND SPIDERS
 - 10-WAUKESHA
 - 11-BUFFALO
 - 12-CLEVELAND NAPS
 - 13-BERGEN
 - 14-GRAND RAPIDS
 - 15-MIMOSA
 - 16-SOUTH STARRUCCA



FEEBLE FOUR
1-HP-HARRY HOOPER
2-HH-ART FLETCHER
3-LI-ZACK WHEAT
4-LI-STUFFY MCINNIS





OTHER FIRST ROUNDERS

5-ME-Jim Scott

6-PR-Chief Meyers

7-TU-Fred Luderus

8-BR-Burt Shotton

9-CS-Harry Gaspar

10-WA-Jimmy Austin

11-BU-Ray Collins

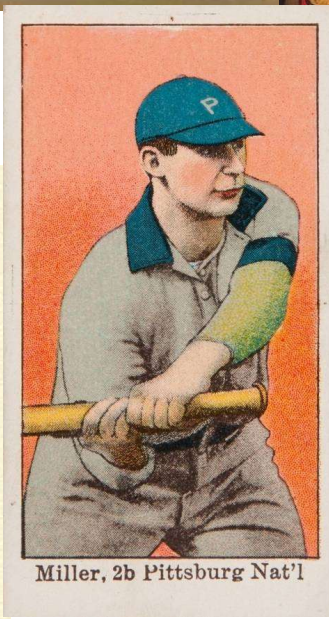
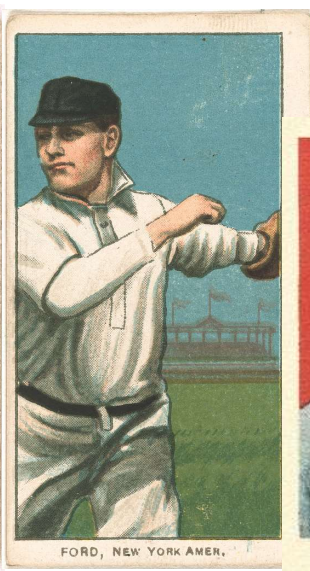
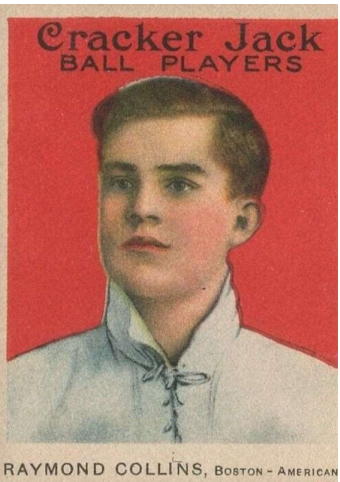
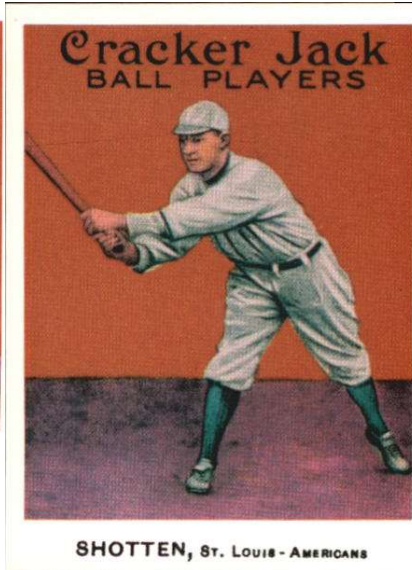
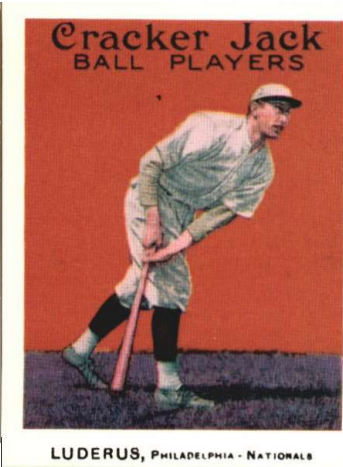
12-CL-Tommy Clarke

13-LI-Russ Ford

14-GW-Willie Mitchell

15-MI-Dots Miller

16-SO-Bob Harmon



Meet our Teams

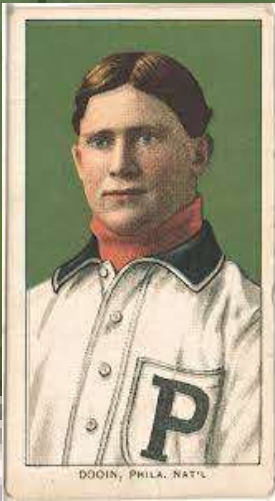
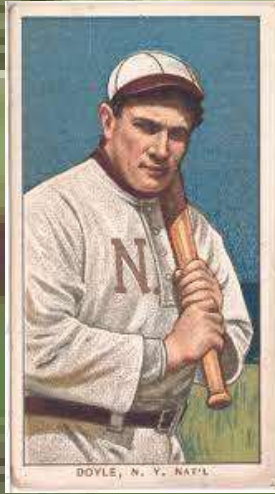


**South Starrucca
Ainspans**

South Starrucca Ainspans Draft Picks

1-Bob Harmon 2-Bob Groom 2a-Tom Downey
3-Rip Hagerman 4-Tom Cantwell 5-Red Booles
6-Swat McCabe 7-Frank Scanlan 8-Bert James





- 1-Steve Evans, RF
- 2-Danny Murphy, CF
- 3-Larry Doyle, 2B
- 4-Frank Baker, 3B
- 5-Chief Wilson, LF
- 6-Tom Jones, 1B
- 7-Neal Ball, 2B
- 8-Red Doin, C
- 9-George Mullin, P

**South Starrucca Ainspans 1910
Opening Day Starting Lineup**

15 Pitchers	Tm	Lg	W	L	PCT	SV	ERA	G	GS	CG	SHO	QS	IP	H	R	ER	HR	SO	BB
Scanlan, F.	SO	TCBA	1	0	1.000	0	.00	1	0	0	0	0	1.0	1	0	0	0	0	0
Cantwell, T.	SO	TCBA	2	0	1.000	0	1.00	8	0	0	0	0	9.0	5	1	1	0	1	3
Kroh, R.	SO	TCBA	11	0	1.000	7	1.11	31	7	4	2	5	89.1	60	18	11	0	44	23
Booles, R.	SO	TCBA	2	0	1.000	2	1.40	13	1	0	0	1	19.1	11	3	3	0	8	7
Hughes, L.	PR	TCBA	2	1	.667	0	2.02	3	2	0	0	1	13.1	12	5	3	0	7	3
Mullin, G.	SO	TCBA	18	15	.545	1	2.20	44	38	16	4	21	278.1	206	91	68	1	149	92
Hagerman, R.	SO	TCBA	3	3	.500	11	2.44	39	0	0	0	0	51.2	32	15	14	0	23	19
Falkenberg, C.	SO	TCBA	10	7	.588	2	2.53	32	19	9	2	10	145.2	115	61	41	0	72	43
Crandall, D.	SO	TCBA	2	2	.500	1	2.65	39	3	1	0	2	54.1	58	22	16	2	30	24
Sparks, T.	SO	TCBA	8	3	.727	0	2.74	29	14	5	0	8	121.2	121	52	37	5	43	23
Willett, E.	SO	TCBA	17	14	.548	2	3.00	45	37	10	1	17	255.0	226	123	85	3	71	112
Groom, B.	SO	TCBA	10	12	.455	1	3.42	40	25	9	1	9	207.2	189	109	79	3	119	89
Harmon, B.	SO	TCBA	6	3	.667	1	3.67	34	6	1	0	3	98.0	104	58	40	0	39	55
Wolter, H.	SO	TCBA	0	0	-	1	4.50	13	0	0	0	0	22.0	32	17	11	0	6	8
Fiehl, S.	SO	TCBA	0	1	.000	0	5.63	1	1	0	0	0	8.0	16	12	5	1	1	5
South Starrucca Ainspans			92	61	.601	29	2.71	372	153	55	10	77	1374.1	1188	587	414	15	613	506

15 Pitchers	Tm	Lg	SUP/9	R/9	ERA	BF/9	BR/9	H/9	BB/9	SO/9	HR/9	ERPT	OBA	BF	BR	IBB	HB	WP	BK
Scanlan, F.	SO	TCBA	.0	.00	.00	27.0	9.0	9.0	.0	.0	.00	.3	.333	3	1	0	0	0	0
Cantwell, T.	SO	TCBA	.0	1.00	1.00	33.0	7.0	5.0	2.0	1.0	.00	1.9	.172	33	7	1	0	0	0
Kroh, R.	SO	TCBA	3.5	1.81	1.11	35.8	8.3	6.0	2.1	4.4	.00	18.1	.183	355	82	2	1	0	2
Booles, R.	SO	TCBA	4.2	1.40	1.40	35.4	8.4	5.1	3.3	3.7	.00	3.3	.167	76	18	0	0	0	0
Hughes, L.	PR	TCBA	.7	3.38	2.02	37.8	9.4	8.1	1.4	4.7	.00	1.3	.235	56	14	1	0	0	0
Mullin, G.	SO	TCBA	4.2	2.94	2.20	37.0	10.1	6.7	2.9	4.8	.03	22.6	.205	1143	311	1	14	4	0
Hagerman, R.	SO	TCBA	.0	2.61	2.44	36.1	8.7	5.6	2.6	4.0	.00	2.8	.187	207	50	4	3	2	0
Falkenberg, C.	SO	TCBA	3.9	3.77	2.53	37.2	9.8	7.1	2.5	4.4	.00	6.4	.211	602	158	2	2	3	0
Crandall, D.	SO	TCBA	3.3	3.64	2.65	40.6	13.7	9.6	3.8	5.0	.33	1.7	.276	245	83	1	2	0	0
Sparks, T.	SO	TCBA	4.7	3.85	2.74	38.1	11.2	9.0	1.7	3.2	.37	2.6	.256	515	151	0	7	0	0
Willett, E.	SO	TCBA	4.4	4.34	3.00	39.1	12.2	8.0	3.8	2.5	.11	-2.0	.237	1109	346	4	12	5	0
Groom, B.	SO	TCBA	3.6	4.72	3.42	39.8	12.3	8.2	3.8	5.2	.13	-11.4	.239	919	284	1	7	7	0
Harmon, B.	SO	TCBA	2.8	5.33	3.67	41.3	15.0	9.6	5.0	3.6	.00	-8.1	.276	450	163	1	5	3	0
Wolter, H.	SO	TCBA	.0	6.95	4.50	42.5	16.4	13.1	2.9	2.5	.00	-3.8	.348	104	40	1	1	0	0
Fiehl, S.	SO	TCBA	2.3	13.50	5.63	51.8	23.6	18.0	5.6	1.1	1.13	-2.4	.390	46	21	0	0	0	0
South Starrucca Ainspans			3.7	3.84	2.71	38.4	11.3	7.8	3.2	4.0	.10	33.3	.231	5863	1729	19	54	24	2

34 Players	Tm	Lg	AVG	G	AB	R	H	2B	3B	HR	TB	RBI	SO	BB	ASB	SB	CS	SBP	GDP
McCabe, S.	SO	TCBA	.500	7	6	1	3	2	0	0	5	4	0	0	0	0	0	-	0
Hughes, L.	PR	TCBA	.333	3	3	0	1	0	0	0	1	0	0	0	0	0	0	-	0
Doyle, L.	SO	TCBA	.314	138	488	96	153	22	8	8	215	82	43	50	23	17	6	73.9	9
Baker, H.	SO	TCBA	.304	145	519	86	158	36	16	2	232	111	41	36	8	7	1	87.5	5
Ball, N.	SO	TCBA	.278	86	230	36	64	9	1	1	78	20	22	22	10	8	2	80.0	2
Jones, T.	SO	TCBA	.274	131	453	49	124	21	1	0	147	65	44	32	12	10	2	83.3	3
Jones, D.	SO	TCBA	.273	83	161	28	44	2	0	0	46	13	9	21	6	5	1	83.3	2
Dooin, R.	SO	TCBA	.266	126	413	45	110	18	1	0	130	47	50	21	4	4	0	100.0	7
Wilson, C.	SO	TCBA	.265	149	562	78	149	20	11	5	206	106	53	21	18	13	5	72.2	4
Unglaub, B.	SO	TCBA	.252	90	282	30	71	12	2	1	90	26	29	19	5	3	2	60.0	6
Harmon, B.	SO	TCBA	.250	34	32	6	8	1	0	0	9	0	2	4	0	0	0	-	1
Devore, J.	SO	TCBA	.250	8	8	0	2	0	0	0	2	0	0	1	0	0	0	-	1
Cantwell, T.	SO	TCBA	.250	8	4	1	1	1	0	0	2	0	1	0	0	0	0	-	0
Fiehl, S.	SO	TCBA	.250	3	4	0	1	0	0	0	1	0	0	0	0	0	0	-	0
Evans, S.	SO	TCBA	.247	137	481	104	119	18	4	1	148	44	43	68	12	10	2	83.3	11
Wolter, H.	SO	TCBA	.233	58	60	6	14	1	1	2	23	11	5	1	1	1	0	100.0	1
Stanage, O.	SO	TCBA	.232	56	138	11	32	5	3	0	43	17	13	9	1	0	1	.0	2
Becker, B.	SO	TCBA	.227	105	388	57	88	12	4	5	123	36	63	38	7	4	3	57.1	1
Downey, T.	SO	TCBA	.223	112	327	28	73	11	6	0	96	38	38	26	6	5	1	83.3	7
Murphy, D.	PR	TCBA	.216	23	88	11	19	5	0	0	24	10	11	6	1	1	0	100.0	2
Delahanty, J.	SO	TCBA	.209	75	153	15	32	7	1	0	41	18	25	20	5	4	1	80.0	3
Falkenberg, C.	SO	TCBA	.191	32	47	5	9	0	0	0	9	0	5	0	0	0	0	-	1
Abbatichio, E.	SO	TCBA	.185	34	54	9	10	0	0	2	16	2	8	10	1	1	0	100.0	0
Kroh, R.	SO	TCBA	.176	31	17	1	3	0	0	0	3	1	4	4	0	0	0	-	1
Mullin, G.	SO	TCBA	.176	44	91	9	16	5	0	0	21	7	10	9	0	0	0	-	2
Crandall, D.	SO	TCBA	.143	39	14	4	2	0	0	0	2	0	2	2	0	0	0	-	0
Willett, E.	SO	TCBA	.134	45	82	8	11	2	0	0	13	6	9	1	0	0	0	-	0
Sparks, T.	SO	TCBA	.128	29	39	5	5	0	0	0	5	2	11	2	0	0	0	-	0
Cravath, G.	SO	TCBA	.108	39	65	12	7	0	0	0	7	4	8	24	2	2	0	100.0	2
Groom, B.	SO	TCBA	.097	40	72	7	7	0	0	0	7	2	10	1	0	0	0	-	2
Hagerman, R.	SO	TCBA	.000	39	3	0	0	0	0	0	0	0	1	2	0	0	0	-	0
Booles, R.	SO	TCBA	.000	13	3	0	0	0	0	0	0	0	0	1	0	0	0	-	0
James, B.	SO	TCBA	-	1	0	0	0	0	0	0	0	0	0	0	0	0	0	-	0
Scanlan, F.	SO	TCBA	-	1	0	0	0	0	0	0	0	0	0	0	0	0	0	-	0
South Starrucca Ainspans			.253	1964	5287	748	1336	210	59	27	1745	672	560	451	122	95	27	77.9	75

34 Players	Tm	Lg	AVG	OBP	SLG	OPS	ISO	SECA	TA	RCON	RC	RC/G	PA	IBB	HBP	SH	SF
McCabe, S.	SO	TCBA	.500	.429	.833	1.262	.333	.333	1.667	1.3	2.4	16.0	7	0	0	0	1
Hughes, L.	PR	TCBA	.333	.333	.333	.667	.000	.000	.500	-0	.3	4.5	3	0	0	0	0
Doyle, L.	SO	TCBA	.314	.385	.441	.825	.127	.252	.826	26.4	85.6	6.5	552	0	7	5	1
Baker, H.	SO	TCBA	.304	.357	.447	.804	.143	.224	.777	22.2	86.4	6.1	579	8	10	7	7
Ball, N.	SO	TCBA	.278	.341	.339	.680	.061	.183	.641	1.3	29.5	4.4	263	0	1	8	2
Jones, T.	SO	TCBA	.274	.338	.325	.662	.051	.139	.611	-2	55.4	4.3	517	3	15	11	6
Jones, D.	SO	TCBA	.273	.361	.286	.646	.012	.168	.608	-2	18.8	4.1	186	1	1	3	0
Dooin, R.	SO	TCBA	.266	.307	.315	.622	.048	.109	.513	-9.0	41.2	3.4	452	1	4	12	2
Wilson, C.	SO	TCBA	.265	.288	.367	.655	.101	.153	.573	-8.6	61.8	3.7	608	1	2	11	12
Unglaub, B.	SO	TCBA	.252	.298	.319	.618	.067	.138	.516	-7.7	27.0	3.2	310	0	1	5	3
Harmon, B.	SO	TCBA	.250	.333	.281	.615	.031	.156	.520	-7	3.2	3.2	38	0	0	2	0
Devore, J.	SO	TCBA	.250	.333	.250	.583	.000	.125	.429	-3	.6	1.8	11	0	0	2	0
Cantwell, T.	SO	TCBA	.250	.250	.500	.750	.250	.250	.667	.1	.5	4.5	4	0	0	0	0
Fiehl, S.	SO	TCBA	.250	.250	.250	.500	.000	.000	.333	-3	.3	2.3	4	0	0	0	0
Evans, S.	SO	TCBA	.247	.366	.308	.674	.060	.218	.664	5.4	61.5	4.3	582	1	23	8	2
Wolter, H.	SO	TCBA	.233	.246	.383	.629	.150	.183	.532	-1.6	5.5	3.1	61	0	0	0	0
Stanage, O.	SO	TCBA	.232	.275	.312	.586	.080	.138	.486	-5.7	12.4	2.8	157	1	1	4	5
Becker, B.	SO	TCBA	.227	.296	.317	.613	.090	.191	.546	-11.2	39.2	3.4	432	0	1	3	2
Downey, T.	SO	TCBA	.223	.279	.294	.573	.070	.162	.489	-13.0	28.4	2.7	372	0	1	14	4
Murphy, D.	PR	TCBA	.216	.271	.273	.544	.057	.136	.451	-4.2	6.8	2.5	98	0	1	2	1
Delahanty, J.	SO	TCBA	.209	.313	.268	.581	.059	.209	.552	-4.1	15.0	3.1	185	0	4	6	2
Falkenberg, C.	SO	TCBA	.191	.208	.191	.400	.000	.000	.256	-5.0	2.1	1.2	54	0	1	6	0
Abbatichio, E.	SO	TCBA	.185	.313	.296	.609	.111	.315	.614	-9	6.0	3.7	64	0	0	0	0
Kroh, R.	SO	TCBA	.176	.333	.176	.510	.000	.235	.467	-8	1.5	2.1	25	0	0	4	0
Mullin, G.	SO	TCBA	.176	.248	.231	.478	.055	.154	.390	-6.7	5.7	1.9	106	0	0	5	1
Crandall, D.	SO	TCBA	.143	.250	.143	.393	.000	.143	.333	-1.4	.9	1.5	19	0	0	3	0
Willett, E.	SO	TCBA	.134	.172	.159	.331	.024	.037	.239	-10.7	2.8	1.0	92	0	3	5	1
Sparks, T.	SO	TCBA	.128	.171	.128	.299	.000	.051	.206	-5.5	1.3	.9	47	0	0	6	0
Cravath, G.	SO	TCBA	.108	.348	.108	.456	.000	.400	.550	-2.8	5.0	2.1	92	0	0	3	0
Groom, B.	SO	TCBA	.097	.122	.097	.219	.000	.014	.134	-12.4	.9	.3	80	0	1	6	0
Hagerman, R.	SO	TCBA	.000	.400	.000	.400	.000	.667	.667	-1	.2	1.9	5	0	0	0	0
Booles, R.	SO	TCBA	.000	.250	.000	.250	.000	.333	.333	-4	.1	.6	4	0	0	0	0
James, B.	SO	TCBA	-	-	-	-	-	-	-	.0	.0	.0	1	0	0	1	0
Scanlan, F.	SO	TCBA	-	-	-	-	-	-	-	.0	-	-	0	0	0	0	0
South Starrucca Ainspans			.253	.318	.330	.648	.077	.176	.584	-56.8	594.8	3.8	6010	16	77	142	52



WELCOME TO
— The —
HISTORIC TOWN
of —
HYDE PARK, N.Y.



Hyde Park

Hyde Park Vitamen Draft Picks

1-Harry Hooper 2-King Cole

4-Paddy Livingston

5-Charlie French 6-Walt Devoy 7-Frank Owens 8-Les Backman



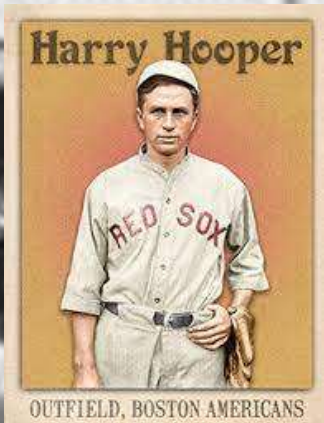
RESIDENCE OF FRANKLIN D. ROOSEVELT, HYDE PARK, N.Y.

Hyde Park Vitamen Starting Lineup for Opening Day 1910

- 1-Jimmy Sheckard, CF
- 2-Harry Hooper, LF
- 3-Harry Lord, 3B
- 4-Hal Chase, 1B
- 5-Wildfire Schulte, RF
- 6-Roy Hartzell, SS
- 7-Dave Shean, 2B
- 8-Paddy Livingston, C
- 9-Bob Ewing, P



Hartzell, r.f. St. Louis Am.



OUTFIELD, BOSTON AMERICANS



SHECKARD, CHICAGO NAT'L



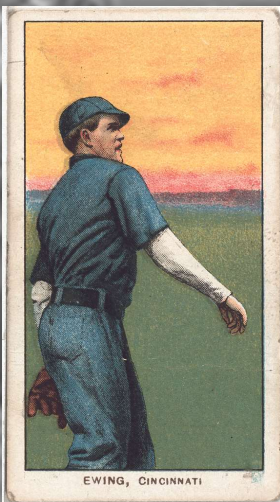
SCHULTE, CHICAGO NAT'L



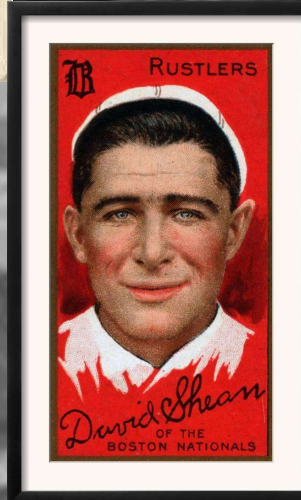
LORD, BOSTON AMER.



LIVINGSTONE, PHILA. AMER.



EWING, CINCINNATI



David Shean
OF THE
BOSTON NATIONALS



CHASE, N. Y. AMER.

13 Pitchers	Tm	Lg	W	L	PCT	SV	ERA	G	GS	CG	SHO	QS	IP	H	R	ER	HR	SO	BB
Cole, K.	HP	TCBA	1	0	1.000	0	1.00	1	1	1	0	0	9.0	6	4	1	0	2	1
Krause, H.	HP	TCBA	20	7	.741	5	1.32	48	25	13	1	22	231.0	138	54	34	3	126	60
Ewing, B.	HP	TCBA	16	7	.696	0	2.38	35	31	12	6	20	241.2	190	94	64	1	125	87
Sallee, S.	HP	TCBA	12	11	.522	2	2.49	40	28	9	3	17	231.1	194	86	64	2	74	63
Pelty, B.	HP	TCBA	13	10	.565	2	2.60	35	24	14	0	14	215.0	186	86	62	1	105	74
Smith, C.	HP	TCBA	7	13	.350	0	3.13	27	21	8	2	11	149.2	154	69	52	7	77	37
Backman, L.	HP	TCBA	3	4	.429	1	3.43	23	6	2	1	4	81.1	91	36	31	1	27	27
Olmstead, F.	HP	TCBA	4	6	.400	2	3.75	23	3	1	0	1	60.0	53	32	25	0	18	15
Scanlan, D.	HP	TCBA	11	8	.579	1	4.24	32	15	4	1	9	127.1	107	75	60	3	76	77
Owens, F.	HP	TCBA	0	0	-	0	4.96	5	0	0	0	0	16.1	27	13	9	0	9	5
Orth, A.	HP	TCBA	0	0	-	0	5.56	4	0	0	0	0	11.1	12	7	7	0	4	3
Keeley, B.	HP	TCBA	0	1	.000	0	5.93	13	0	0	0	0	13.2	24	16	9	0	3	8
Braun, R.	HP	TCBA	0	0	-	0	10.80	2	0	0	0	0	1.2	3	2	2	0	0	0
Hyde Park Vitamen			87	67	.565	13	2.72	288	154	64	14	98	1389.1	1185	574	420	18	646	457

13 Pitchers	Tm	Lg	SUP/9	R/9	ERA	BF/9	BR/9	H/9	BB/9	SO/9	HR/9	ERPT	OBA	BF	BR	IBB	HB	WP	BK
Cole, K.	HP	TCBA	6.0	4.00	1.00	35.0	7.0	6.0	1.0	2.0	.00	1.9	.176	35	7	0	0	0	0
Krause, H.	HP	TCBA	3.8	2.10	1.32	34.8	7.7	5.4	2.2	4.9	.12	41.2	.171	894	198	4	4	2	1
Ewing, B.	HP	TCBA	4.5	3.50	2.38	37.5	10.2	7.1	3.1	4.7	.04	14.7	.213	1006	275	5	3	3	0
Sallee, S.	HP	TCBA	3.8	3.35	2.49	37.6	10.0	7.5	2.2	2.9	.08	11.3	.221	967	257	7	7	4	0
Pelty, B.	HP	TCBA	4.3	3.60	2.60	38.2	10.9	7.8	2.8	4.4	.04	8.0	.233	912	260	7	7	2	2
Smith, C.	HP	TCBA	3.7	4.15	3.13	39.0	11.6	9.3	1.9	4.6	.42	-3.3	.260	649	193	5	7	0	0
Backman, L.	HP	TCBA	1.8	3.98	3.43	39.3	13.1	10.1	2.8	3.0	.11	-4.5	.287	355	118	2	2	2	0
Olmstead, F.	HP	TCBA	1.4	4.80	3.75	37.5	10.1	8.0	1.6	2.7	.00	-5.5	.248	250	67	4	3	2	0
Scanlan, D.	HP	TCBA	3.8	5.30	4.24	40.2	13.1	7.6	4.9	5.4	.21	-18.6	.228	569	185	7	8	3	0
Owens, F.	HP	TCBA	.0	7.16	4.96	44.6	18.7	14.9	2.8	5.0	.00	-3.7	.365	81	34	0	2	0	1
Orth, A.	HP	TCBA	.0	5.56	5.56	40.5	11.9	9.5	2.4	3.2	.00	-3.3	.261	51	15	0	0	0	0
Keeley, B.	HP	TCBA	.0	10.54	5.93	48.7	19.8	15.8	2.6	2.0	.00	-4.6	.393	74	30	4	2	0	0
Braun, R.	HP	TCBA	.0	10.80	10.80	54.0	21.6	16.2	.0	.0	.00	-1.5	.333	10	4	0	1	0	1
Hyde Park Vitamen			3.7	3.72	2.72	37.9	10.6	7.7	2.7	4.2	.12	32.2	.228	5853	1643	45	46	18	5

26 Players	Tm	Lg	AVG	G	AB	R	H	2B	3B	HR	TB	RBI	SO	BB	ASB	SB	CS	SBP	GDP
Keeley, B.	HP	TCBA	.500	13	4	0	2	0	0	0	2	2	0	0	0	0	0	-	1
Scanlan, D.	HP	TCBA	.366	32	41	8	15	9	0	0	24	6	3	6	0	0	0	-	1
Chase, H.	HP	TCBA	.326	124	481	77	157	21	1	3	189	80	41	31	53	42	11	79.2	6
Lord, H.	HP	TCBA	.310	139	564	82	175	13	5	0	198	58	37	16	71	55	16	77.5	5
Hartzell, R.	HP	TCBA	.308	153	607	78	187	18	3	0	211	71	59	40	18	11	7	61.1	7
Wallace, B.	HP	TCBA	.265	128	332	31	88	16	4	0	112	45	36	24	5	3	2	60.0	8
Shean, D.	HP	TCBA	.260	116	385	50	100	14	1	0	116	33	49	43	35	24	11	68.6	4
Livingston, P.	HP	TCBA	.255	69	200	28	51	5	5	0	66	29	22	15	4	4	0	100.0	5
Braun, R.	HP	TCBA	.246	51	69	9	17	5	1	0	24	4	12	4	0	0	0	-	4
Hooper, H.	HP	TCBA	.244	85	262	40	64	2	4	0	74	23	21	18	14	12	2	85.7	1
Owens, F.	HP	TCBA	.243	70	103	6	25	2	0	0	27	12	17	11	1	1	0	100.0	1
Sheckard, J.	HP	TCBA	.238	144	580	86	138	29	7	0	181	54	55	66	21	15	6	71.4	9
Schulte, W.	HP	TCBA	.232	141	555	64	129	13	8	4	170	82	47	28	31	21	10	67.7	8
French, C.	HP	TCBA	.231	84	182	31	42	1	2	0	47	12	14	25	4	3	1	75.0	4
Orth, A.	HP	TCBA	.231	35	39	4	9	0	1	0	11	3	6	3	1	1	0	100.0	1
Conroy, W.	HP	TCBA	.216	64	171	13	37	3	0	0	40	17	23	15	14	11	3	78.6	1
Devoy, W.	HP	TCBA	.215	72	149	18	32	4	7	0	50	17	27	8	3	3	0	100.0	6
Sullivan, B.	HP	TCBA	.185	95	243	23	45	2	0	0	47	25	35	22	2	2	0	100.0	8
Ewing, B.	HP	TCBA	.183	36	82	7	15	1	0	0	16	10	16	1	0	0	0	-	0
Pelty, B.	HP	TCBA	.153	35	72	7	11	2	0	0	13	6	11	2	0	0	0	-	0
Smith, C.	HP	TCBA	.146	27	48	2	7	0	0	0	7	4	7	0	0	0	0	-	1
Krause, H.	HP	TCBA	.125	48	72	5	9	0	0	0	9	5	14	5	0	0	0	-	2
Sallee, S.	HP	TCBA	.114	40	70	7	8	0	0	0	8	7	11	8	0	0	0	-	0
Backman, L.	HP	TCBA	.091	23	22	2	2	0	0	0	2	1	2	2	0	0	0	-	0
Olmstead, F.	HP	TCBA	.063	23	16	0	1	0	0	0	1	0	2	0	0	0	0	-	0
Cole, K.	HP	TCBA	.000	1	4	0	0	0	0	0	0	0	2	0	0	0	0	-	0
Hyde Park Vitamen			.255	1848	5353	678	1366	160	49	7	1645	606	569	393	277	208	69	75.1	83

Hyde Park Vitamen			.255	1648	5555	678	1500	100	49	7	1645	600	569	395	277	208	69	75.1	60	
26 Players	Tm	Lg	AVG	OBP	SLG	OPS	ISO	SECA	TA	RCON	RC	RC/G	PA	IBB	HBP	SH	SF			
Keeley, B.	HP	TCBA	.500	.500	.500	1.000	.000	.000	.667	.4	.5	4.5	4	0	0	0	0			
Scanlan, D.	HP	TCBA	.366	.458	.585	1.044	.220	.366	1.148	5.8	11.3	10.9	49	0	1	1	0			
Chase, H.	HP	TCBA	.326	.365	.393	.758	.067	.195	.774	18.6	73.8	5.7	522	3	2	1	7			
Lord, H.	HP	TCBA	.310	.331	.351	.682	.041	.138	.668	4.3	69.6	4.5	595	2	5	2	8			
Hartzell, R.	HP	TCBA	.308	.351	.348	.698	.040	.112	.611	2.1	76.1	4.6	658	1	3	2	6			
Wallace, B.	HP	TCBA	.265	.316	.337	.653	.072	.148	.563	-3.9	36.3	3.7	373	0	4	6	7			
Shean, D.	HP	TCBA	.260	.336	.301	.637	.042	.187	.620	-4.2	43.6	3.7	450	2	3	15	4			
Livingston, P.	HP	TCBA	.255	.326	.330	.656	.075	.170	.597	-.8	22.7	3.9	226	2	7	2	2			
Braun, R.	HP	TCBA	.246	.288	.348	.635	.101	.159	.500	-1.6	5.8	2.8	73	0	0	0	0			
Hooper, H.	HP	TCBA	.244	.307	.282	.589	.038	.145	.547	-6.8	25.8	3.4	288	0	6	1	1			
Owens, F.	HP	TCBA	.243	.313	.262	.575	.019	.136	.494	-3.4	9.6	3.1	118	1	0	3	1			
Sheckard, J.	HP	TCBA	.238	.319	.312	.631	.074	.203	.582	-9.2	62.0	3.6	660	1	4	8	2			
Schulte, W.	HP	TCBA	.232	.268	.306	.575	.074	.144	.495	-24.6	45.7	2.7	597	1	1	8	5			
French, C.	HP	TCBA	.231	.340	.258	.598	.027	.176	.552	-4.0	17.7	3.3	212	1	5	0	0			
Orth, A.	HP	TCBA	.231	.279	.282	.561	.051	.154	.484	-1.5	3.4	2.7	45	0	0	2	1			
Conroy, W.	HP	TCBA	.216	.278	.234	.512	.018	.152	.478	-9.0	13.4	2.4	196	0	0	9	1			
Devoy, W.	HP	TCBA	.215	.252	.336	.587	.121	.195	.496	-5.7	11.7	2.5	160	0	0	1	2			
Sullivan, B.	HP	TCBA	.185	.280	.193	.474	.008	.107	.403	-16.3	15.2	1.9	287	3	12	5	5			
Ewing, B.	HP	TCBA	.183	.190	.195	.386	.012	.024	.254	-9.2	3.7	1.3	94	0	0	10	1			
Pelty, B.	HP	TCBA	.153	.176	.181	.356	.028	.056	.246	-8.8	2.9	1.1	83	0	0	9	0			
Smith, C.	HP	TCBA	.146	.241	.146	.387	.000	.000	.310	-5.0	2.1	1.3	57	0	6	3	0			
Krause, H.	HP	TCBA	.125	.188	.125	.313	.000	.069	.231	-9.6	2.2	.8	86	0	1	6	2			
Sallee, S.	HP	TCBA	.114	.210	.114	.324	.000	.114	.274	-8.8	2.9	1.1	88	0	1	7	2			
Backman, L.	HP	TCBA	.091	.167	.091	.258	.000	.091	.200	-3.4	.5	.7	26	0	0	2	0			
Olmstead, F.	HP	TCBA	.063	.063	.063	.125	.000	.000	.067	-3.3	.1	.2	17	0	0	1	0			
Cole, K.	HP	TCBA	.000	.000	.000	.000	.000	.000	.000	-1.0	.0	.0	4	0	0	0	0			
Hyde Park Vitamen			.255	.310	.307	.618	.052	.152	.557	-109.2	545.1	3.4	5968	17	61	104	57			

Spiders

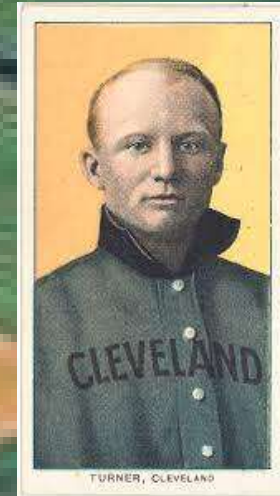
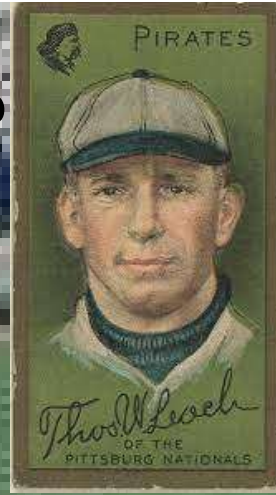
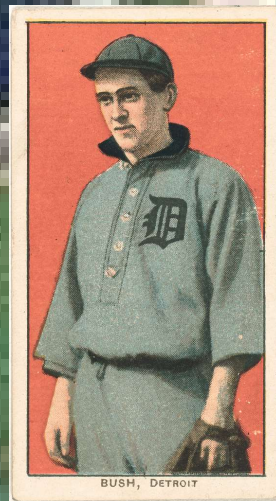
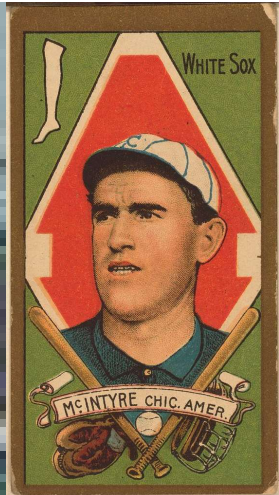


CLEVELAND SPIDERS FREE AGENT DRAFT

1-Harry Gaspar 2-Art Griggs



Cleveland Spiders 1910 Opening Day Lineup



- 1-Donie Bush, SS
- 2-John Titus, RF
- 3-Tommy Leach, CF
- 4-Bill Carrigan, C
- 5-Matty McIntyre, LF
- 6-Kitty Bransfield, 1B
- 7-Terry Turner, 2B
- 8-Billy Purtell, 3B
- 9-Cy Morgan, P

8 Pitchers	Tm	Lg	W	L	PCT	SV	ERA	G	GS	CG	SHO	QS	IP	H	R	ER	HR	SO	BB
Walsh, E.	CS	TCBA	20	8	.714	0	1.50	31	29	25	4	25	258.0	154	64	43	2	118	65
Maddox, N.	CS	TCBA	15	8	.652	0	1.98	27	25	21	5	16	214.0	168	67	47	2	59	35
Gaspar, H.	CS	TCBA	16	11	.593	0	2.16	36	27	22	2	17	253.2	207	85	61	1	56	55
Morgan, C.	CS	TCBA	22	16	.579	1	2.34	44	34	30	4	23	326.2	238	111	85	4	99	131
Manning, R.	CS	TCBA	7	13	.350	2	3.25	26	22	11	2	9	180.0	193	91	65	1	80	63
Tuckey, T.	CS	TCBA	2	4	.333	1	4.00	11	5	5	0	1	63.0	85	41	28	0	25	17
Rhodes, C.	CS	TCBA	1	10	.091	0	5.52	15	11	6	0	4	91.1	117	71	56	1	53	51
Shifflett, C.	CS	TCBA	0	1	.000	0	12.00	1	1	0	0	0	3.0	9	8	4	0	0	1
Cleveland Spiders			83	71	.539	4	2.52	191	154	120	17	95	1389.2	1171	538	389	11	490	418

8 Pitchers	Tm	Lg	SUP/9	R/9	ERA	BF/9	BR/9	H/9	BB/9	SO/9	HR/9	ERPT	OBA	BF	BR	IBB	HB	WP	BK
Walsh, E.	CS	TCBA	3.8	2.23	1.50	35.1	7.7	5.4	2.3	4.1	.07	41.0	.169	1006	222	0	3	3	0
Maddox, N.	CS	TCBA	4.8	2.82	1.98	36.1	8.9	7.1	1.5	2.5	.08	22.7	.211	858	212	0	9	0	0
Gaspar, H.	CS	TCBA	3.4	3.02	2.16	36.5	9.6	7.3	2.0	2.0	.04	21.6	.220	1028	271	0	9	1	0
Morgan, C.	CS	TCBA	4.3	3.06	2.34	37.3	10.6	6.6	3.6	2.7	.11	21.3	.204	1354	385	0	16	5	1
Manning, R.	CS	TCBA	3.7	4.55	3.25	39.8	13.0	9.7	3.1	4.0	.05	-6.4	.274	795	260	0	4	4	0
Tuckey, T.	CS	TCBA	1.9	5.86	4.00	41.7	14.9	12.1	2.4	3.6	.00	-7.5	.317	292	104	0	2	1	0
Rhodes, C.	CS	TCBA	2.3	7.00	5.52	43.8	16.9	11.5	5.0	5.2	.10	-26.3	.311	444	172	0	4	4	0
Shifflett, C.	CS	TCBA	.0	24.00	12.00	63.0	30.0	27.0	3.0	.0	.00	-3.0	.474	21	10	0	0	0	0
Cleveland Spiders			3.8	3.48	2.52	37.6	10.6	7.6	2.7	3.2	.07	63.3	.226	5798	1636	0	47	18	1



20 Players	Tm	Lg	AVG	G	AB	R	H	2B	3B	HR	TB	RBI	SO	BB	ASB	SB	CS	SBP	GDP
Carrigan, B.	CS	TCBA	.361	73	288	35	104	18	1	0	124	58	29	22	6	2	4	33.3	6
Birmingham, J.	CS	TCBA	.303	29	89	20	27	6	2	0	37	14	8	7	4	4	0	100.0	1
Bransfield, K.	CS	TCBA	.289	137	546	72	158	19	5	1	190	62	52	25	27	21	6	77.8	7
Bush, D.	CS	TCBA	.274	151	566	109	155	18	1	0	175	38	57	110	69	55	14	79.7	1
Purtell, B.	CS	TCBA	.266	106	369	37	98	8	2	0	110	43	35	28	22	12	10	54.5	4
Starr, C.	CS	TCBA	.264	79	250	31	66	4	2	0	74	36	39	39	8	6	2	75.0	3
Titus, J.	CS	TCBA	.261	152	536	72	140	27	5	1	180	69	77	81	30	22	8	73.3	12
Leach, T.	CS	TCBA	.255	154	607	85	155	35	9	0	208	65	76	68	35	27	8	77.1	16
Griggs, A.	CS	TCBA	.253	53	158	11	40	10	4	0	58	17	23	7	7	4	3	57.1	5
McIntyre, M.	CS	TCBA	.236	136	483	55	114	13	6	0	139	52	82	67	17	10	7	58.8	5
Turner, T.	CS	TCBA	.214	53	196	22	42	4	5	0	56	27	20	13	13	9	4	69.2	4
Shifflett, C.	CS	TCBA	.195	45	82	4	16	5	2	1	28	12	16	5	0	0	0	-	2
Powers, M.	CS	TCBA	.186	85	322	18	60	0	0	0	60	27	27	6	0	0	0	-	5
Walsh, E.	CS	TCBA	.158	31	95	12	15	3	0	0	18	4	13	8	7	6	1	85.7	4
Rhodes, C.	CS	TCBA	.156	15	32	1	5	2	0	0	7	0	5	1	0	0	0	-	0
Maddox, N.	CS	TCBA	.150	27	80	9	12	1	1	0	15	3	15	9	0	0	0	-	0
Morgan, C.	CS	TCBA	.145	44	117	12	17	4	1	0	23	7	17	7	1	1	0	100.0	4
Manning, R.	CS	TCBA	.113	26	62	4	7	0	0	0	7	6	7	1	0	0	0	-	0
Tuckey, T.	CS	TCBA	.095	60	200	8	19	0	0	0	19	9	34	1	0	0	0	-	7
Gaspar, H.	CS	TCBA	.057	36	88	1	5	1	0	0	6	6	10	7	3	2	1	66.7	1
Cleveland Spiders			.243	1492	5166	618	1255	178	46	3	1534	555	642	512	249	181	68	72.7	87

Tuckey, T.	CS	TCBA	.095	.00	.200	.0	.19	.0	.0	.0	.19	.9	.34	.1	.0	.0	.0	.0	.0
Gaspar, H.	CS	TCBA	.057	.36	.88	.1	.5	.1	.0	.0	.6	.6	.10	.7	.3	.2	.1	66.7	.1
Cleveland Spiders			.243	1492	5166	618	1255	178	46	3	1534	555	642	512	249	181	68	72.7	87

20 Players	Tm	Lg	AVG	OBP	SLG	OPS	ISO	SECA	TA	RCON	RC	RC/G	PA	IBB	HBP	SH	SF
Carrigan, B.	CS	TCBA	.361	.404	.431	.834	.069	.139	.763	14.0	48.8	6.6	316	4	0	4	2
Birmingham, J.	CS	TCBA	.303	.347	.416	.763	.112	.236	.762	3.6	14.0	5.7	99	2	0	1	2
Bransfield, K.	CS	TCBA	.289	.318	.348	.666	.059	.132	.591	-2.8	63.3	3.9	605	3	1	27	6
Bush, D.	CS	TCBA	.274	.396	.309	.705	.035	.302	.812	21.6	89.2	5.4	704	0	6	19	3
Purtell, B.	CS	TCBA	.266	.317	.298	.615	.033	.114	.530	-11.7	36.5	3.2	423	0	1	22	3
Starr, C.	CS	TCBA	.264	.377	.296	.673	.032	.204	.672	3.0	33.8	4.4	315	1	8	15	3
Titus, J.	CS	TCBA	.261	.376	.336	.712	.075	.252	.731	13.8	76.7	4.7	661	5	21	16	6
Leach, T.	CS	TCBA	.255	.332	.343	.675	.087	.231	.643	2.0	72.7	3.9	702	1	3	22	2
Griggs, A.	CS	TCBA	.253	.285	.367	.652	.114	.165	.548	-3.8	14.7	3.0	170	1	0	5	0
McIntyre, M.	CS	TCBA	.236	.327	.288	.615	.052	.197	.570	-10.8	51.0	3.4	570	3	1	13	6
Turner, T.	CS	TCBA	.214	.265	.286	.551	.071	.163	.488	-10.1	14.8	2.4	211	0	1	0	1
Shifflett, C.	CS	TCBA	.195	.241	.341	.583	.146	.207	.485	-3.7	6.3	2.5	87	1	0	0	0
Powers, M.	CS	TCBA	.186	.199	.186	.385	.000	.019	.247	-35.9	11.8	1.2	336	2	0	4	4
Walsh, E.	CS	TCBA	.158	.223	.189	.413	.032	.168	.376	-8.2	4.1	1.3	104	0	0	1	0
Rhodes, C.	CS	TCBA	.156	.182	.219	.401	.063	.094	.296	-3.4	1.4	1.3	34	0	0	1	0
Maddox, N.	CS	TCBA	.150	.244	.188	.432	.038	.150	.368	-7.3	4.4	1.7	91	0	1	1	0
Morgan, C.	CS	TCBA	.145	.192	.197	.389	.051	.120	.298	-12.7	4.5	1.1	132	0	0	7	1
Manning, R.	CS	TCBA	.113	.125	.113	.238	.000	.016	.145	-10.2	1.1	.5	67	0	0	3	1
Tuckey, T.	CS	TCBA	.095	.103	.095	.198	.000	.005	.112	-35.9	1.6	.2	211	1	1	8	1
Gaspar, H.	CS	TCBA	.057	.125	.068	.193	.011	.102	.176	-15.8	1.1	.3	99	0	0	3	1
Cleveland Spiders			.243	.314	.297	.611	.054	.175	.559	-114.4	523.8	3.3	5937	24	44	172	42

ISLANDERS



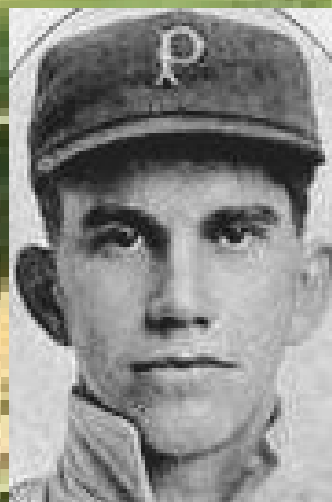
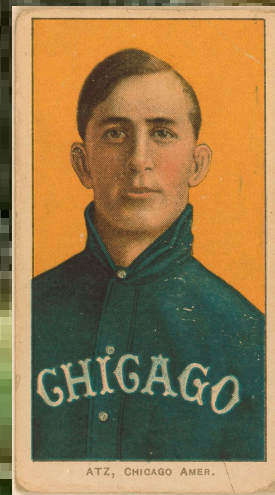
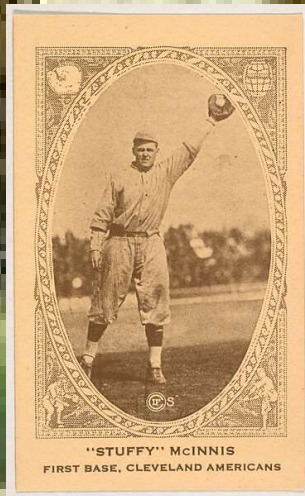
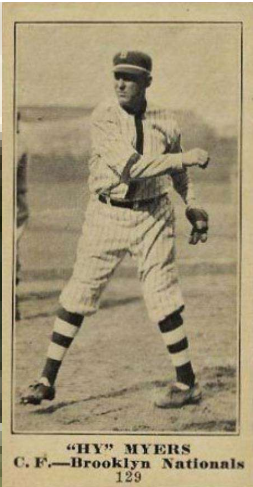
BASEBALL



Long Island Islanders Draft Picks

Long Island

1-Zack Wheat 1a-Staffy McInnis 1b-Russ Ford 2-Bil Killifer 3-Hi Myers 3a-George McConnell
4-Louis Drucke 5-Bill Powell 6-Bill Lelivelt 6a-Chuck Rose 6b-Rudy Schwenck 7-Lucky Wright
7a-Eddie Higgins 7b-Ed LaFitte 8-Phil Stremmer 8a-Bill Forman 8b-Tommy Atkins



1-Bill Sweeney, 3B
2-Herbie Moran, CF
3-George Browne, RF
4-Jake Atz, 2B
5-Hy Myers, LF
6-Stuffy McInnis, SS
7-Doc Marshall, C
8-George Davis, 1B
9-Bill Powell, P

Opening Day Starting Lineup
1910 Long Island Islanders



17 Pitchers	Tm	Lg	W	L	PCT	SV	ERA	G	GS	CG	SHO	QS	IP	H	R	ER	HR	SO	BB
McEneaney, J.	LI	TCBA	0	0	-	1	1.04	16	0	0	0	0	17.1	17	8	2	0	10	5
Drucke, L.	LI	TCBA	1	2	.333	0	2.18	4	4	1	0	2	33.0	23	14	8	0	10	12
Ford, R.	LI	TCBA	0	0	-	0	2.70	3	0	0	0	0	3.1	5	5	1	0	3	4
White, D.	LI	TCBA	8	14	.364	0	2.95	31	21	18	0	11	189.0	167	82	62	0	94	53
Atkins, T.	LI	TCBA	0	3	.000	0	2.97	25	1	0	0	0	30.1	36	20	10	0	24	12
Lelivelt, B.	LI	TCBA	1	2	.333	0	3.26	24	2	1	0	1	38.2	45	19	14	0	13	13
Wright, L.	LI	TCBA	6	22	.214	0	3.64	31	30	11	2	12	202.2	206	117	82	0	70	95
Higgins, E.	LI	TCBA	4	15	.211	3	3.84	38	20	6	1	8	171.0	218	108	73	4	60	35
Powell, B.	LI	TCBA	4	22	.154	0	4.69	30	27	3	0	7	165.0	203	125	86	1	54	91
Stremmel, P.	LI	TCBA	1	4	.200	0	4.94	26	3	2	0	0	58.1	78	42	32	0	26	17
Lafitte, E.	LI	TCBA	1	2	.333	0	4.99	27	3	1	0	1	61.1	83	43	34	0	52	19
Schwenck, R.	LI	TCBA	0	0	-	0	5.00	14	1	0	0	0	18.0	26	15	10	0	22	6
McConnell, G.	LI	TCBA	0	0	-	0	5.40	6	0	0	0	0	5.0	7	5	3	0	2	5
Vickers, R.	LI	TCBA	2	5	.286	2	5.51	31	4	3	0	2	65.1	89	45	40	0	45	23
Rose, C.	LI	TCBA	0	3	.000	0	5.59	21	2	2	0	2	48.1	62	42	30	2	16	21
Owen, F.	LI	TCBA	0	6	.000	1	6.78	32	9	2	0	1	74.1	125	72	56	2	24	20
Forman, B.	LI	TCBA	3	23	.115	0	7.06	29	27	9	0	2	176.0	239	172	138	2	70	104
Long Island Islanders			31	123	.201	7	4.52	388	154	59	3	49	1357.0	1629	934	681	11	595	535

17 Pitchers	Tm	Lg	SUP/9	R/9	ERA	BF/9	BR/9	H/9	BB/9	SO/9	HR/9	ERPT	OBA	BF	BR	IBB	HB	WP	BK
McEneaney, J.	LI	TCBA	.0	4.15	1.04	40.0	11.9	8.8	2.6	5.2	.00	3.6	.243	77	23	0	1	0	0
Drucke, L.	LI	TCBA	2.2	3.82	2.18	37.9	9.3	6.3	3.0	2.7	.00	2.7	.193	139	34	1	0	0	0
Ford, R.	LI	TCBA	.0	13.50	2.70	54.0	24.3	13.5	10.8	8.1	.00	.1	.313	20	9	0	0	0	1
White, D.	LI	TCBA	2.4	3.90	2.95	38.2	10.9	8.0	2.5	4.5	.00	-.5	.235	803	229	0	9	7	0
Atkins, T.	LI	TCBA	.0	5.93	2.97	40.6	14.2	10.7	3.6	7.1	.00	-.1	.298	137	48	0	0	0	0
Lelivelt, B.	LI	TCBA	1.4	4.42	3.26	39.1	12.1	10.5	1.6	3.0	.00	-1.4	.304	168	52	6	0	0	0
Wright, L.	LI	TCBA	2.1	5.20	3.64	40.4	13.4	9.1	4.2	3.1	.00	-16.0	.260	909	301	0	0	3	0
Higgins, E.	LI	TCBA	2.0	5.68	3.84	41.3	13.7	11.5	1.8	3.2	.21	-17.3	.302	784	260	1	8	3	1
Powell, B.	LI	TCBA	2.2	6.82	4.69	43.9	16.4	11.1	4.9	2.9	.05	-32.3	.300	804	300	1	7	7	0
Stremmel, P.	LI	TCBA	2.5	6.48	4.94	41.2	14.8	12.0	2.0	4.0	.00	-13.0	.321	267	96	4	5	0	0
Lafitte, E.	LI	TCBA	1.0	6.31	4.99	42.0	15.3	12.2	2.6	7.6	.00	-14.0	.318	286	104	1	3	3	0
Schwenck, R.	LI	TCBA	2.5	7.50	5.00	46.0	16.5	13.0	2.0	11.0	.00	-4.1	.321	92	33	2	3	0	0
McConnell, G.	LI	TCBA	.0	9.00	5.40	48.6	23.4	12.6	9.0	3.6	.00	-1.4	.350	27	13	0	1	0	0
Vickers, R.	LI	TCBA	1.5	6.20	5.51	42.3	15.6	12.3	3.2	6.2	.00	-18.7	.325	307	113	0	1	4	0
Rose, C.	LI	TCBA	.4	7.82	5.59	43.0	16.0	11.5	3.9	3.0	.37	-14.3	.304	231	86	0	3	0	0
Owen, F.	LI	TCBA	.8	8.72	6.78	44.9	17.6	15.1	2.2	2.9	.24	-31.8	.364	371	145	2	2	0	0
Forman, B.	LI	TCBA	3.2	8.80	7.06	45.3	18.3	12.2	5.3	3.6	.10	-80.7	.322	886	358	0	15	10	0
Long Island Islanders			2.0	6.19	4.52	41.8	14.6	10.8	3.4	3.9	.07	-239.3	.294	6308	2204	18	58	37	2

33 Players	Tm	Lg	AVG	G	AB	R	H	2B	3B	HR	TB	RBI	SO	BB	ASB	SB	CS	SBP	GDP
Drucke, L.	LI	TCBA	.364	4	11	3	4	0	0	0	4	1	1	0	0	0	0	-	0
O'Connor, P.	LI	TCBA	.350	15	20	1	7	1	0	0	8	1	1	0	0	0	0	-	0
Higgins, E.	LI	TCBA	.280	38	50	2	14	0	0	0	14	4	5	2	0	0	0	-	0
Lafitte, E.	LI	TCBA	.273	27	11	0	3	0	0	0	3	0	3	0	0	0	0	-	0
Browne, G.	LI	TCBA	.266	114	391	37	104	17	8	0	137	32	35	35	18	12	6	66.7	5
Atz, J.	LI	TCBA	.248	106	363	28	90	21	3	0	117	36	52	29	14	8	6	57.1	4
Flick, E.	LI	TCBA	.232	84	276	31	64	14	2	0	82	13	25	24	12	7	5	58.3	4
McEaney, J.	LI	TCBA	.222	101	306	26	68	12	2	3	93	25	58	20	1	0	1	.0	6
Sweeney, B.	LI	TCBA	.222	146	564	55	125	23	4	0	156	41	92	36	36	26	10	72.2	8
Wheat, Z.	LI	TCBA	.219	43	114	17	25	6	0	0	31	9	14	7	0	0	0	-	1
Payne, F.	LI	TCBA	.216	56	134	8	29	1	0	0	30	14	19	7	1	0	1	.0	3
McConnell, G.	LI	TCBA	.211	89	265	16	56	0	7	0	70	21	38	15	6	2	4	33.3	3
McInnis, S.	LI	TCBA	.206	79	282	25	58	0	0	6	76	36	42	17	0	0	0	-	12
Moran, H.	LI	TCBA	.190	92	268	27	51	12	0	0	63	15	47	50	0	0	0	-	5
Bliss, J.	LI	TCBA	.187	55	107	13	20	2	1	1	27	7	17	11	1	1	0	100.0	1
Myers, H.	LI	TCBA	.181	132	430	32	78	13	0	0	91	32	50	35	11	8	3	72.7	12
Herzog, B.	LI	TCBA	.181	120	419	19	76	4	0	0	80	18	55	40	5	1	4	20.0	7
Marshall, D.	LI	TCBA	.172	132	430	23	74	22	5	0	106	33	69	26	4	1	3	25.0	9
White, D.	LI	TCBA	.167	106	215	30	36	0	4	0	44	10	36	43	11	8	3	72.7	5
Forman, B.	LI	TCBA	.143	29	56	5	8	0	0	0	8	2	8	2	0	0	0	-	1
Wilson, A.	LI	TCBA	.139	20	36	2	5	1	0	0	6	1	6	3	0	0	0	-	0
Davis, G.	LI	TCBA	.101	67	138	11	14	1	0	0	15	6	21	15	2	2	0	100.0	2
Killefer, B.	LI	TCBA	.091	4	11	0	1	0	0	0	1	0	2	0	0	0	0	-	0
Owen, F.	LI	TCBA	.067	32	15	0	1	0	0	0	1	0	7	0	0	0	0	-	0
Vickers, R.	LI	TCBA	.059	31	17	0	1	0	0	0	1	1	1	0	0	0	0	-	1
Wright, L.	LI	TCBA	.048	31	63	1	3	0	0	0	3	1	16	1	0	0	0	-	1
Powell, B.	LI	TCBA	.020	30	49	1	1	0	0	0	1	1	5	1	0	0	0	-	0
Stremmel, P.	LI	TCBA	.000	26	13	1	0	0	0	0	0	0	2	0	0	0	0	-	0
Rose, C.	LI	TCBA	.000	21	11	1	0	0	0	0	0	0	2	1	0	0	0	-	0
Lelivelt, B.	LI	TCBA	.000	24	7	1	0	0	0	0	0	0	2	0	0	0	0	-	0
Schwenck, R.	LI	TCBA	.000	14	4	0	0	0	0	0	0	0	1	1	0	0	0	-	0
Atkins, T.	LI	TCBA	.000	25	3	0	0	0	0	0	0	0	0	0	0	0	0	-	0
Ford, R.	LI	TCBA	-	3	0	0	0	0	0	0	0	0	0	0	0	0	0	-	0
Long Island Islanders			.200	1896	5079	416	1016	150	36	10	1268	360	732	421	122	76	46	62.3	90

33 Players	Tm	Lg	AVG	OBP	SLG	OPS	ISO	SECA	TA	RCON	RC	RC/G	PA	IBB	HBP	SH	SF
Drucke, L.	LI	TCBA	.364	.364	.364	.727	.000	.000	.571	.1	1.5	5.6	11	0	0	0	0
O'Connor, P.	LI	TCBA	.350	.350	.400	.750	.050	.050	.615	.3	2.8	5.8	20	0	0	0	0
Higgins, E.	LI	TCBA	.280	.308	.280	.588	.000	.040	.444	-1.9	4.5	3.3	53	0	0	1	0
Lafitte, E.	LI	TCBA	.273	.273	.273	.545	.000	.000	.375	-.6	.9	2.6	12	0	0	1	0
Browne, G.	LI	TCBA	.266	.327	.350	.678	.084	.189	.624	-1.4	46.6	4.1	434	1	2	3	3
Atz, J.	LI	TCBA	.248	.302	.322	.624	.074	.160	.544	-9.7	36.3	3.3	402	0	0	8	2
Flick, E.	LI	TCBA	.232	.297	.297	.594	.065	.159	.520	-10.0	25.0	3.0	305	0	2	2	1
McEaney, J.	LI	TCBA	.222	.271	.304	.575	.082	.144	.465	-13.9	24.7	2.7	328	1	1	0	1
Sweeney, B.	LI	TCBA	.222	.269	.277	.545	.055	.147	.479	-28.2	43.6	2.5	614	0	1	11	2
Wheat, Z.	LI	TCBA	.219	.262	.272	.534	.053	.114	.422	-6.4	8.6	2.5	124	0	0	2	1
Payne, F.	LI	TCBA	.216	.255	.224	.479	.007	.052	.349	-10.5	7.8	1.8	148	0	1	3	3
McConnell, G.	LI	TCBA	.211	.255	.264	.519	.053	.102	.407	-19.1	18.5	2.1	301	0	1	19	1
McInnis, S.	LI	TCBA	.206	.262	.270	.532	.064	.124	.419	-16.1	18.8	2.1	311	1	6	2	4
Moran, H.	LI	TCBA	.190	.319	.235	.554	.045	.231	.514	-9.9	23.3	2.8	320	0	1	0	1
Bliss, J.	LI	TCBA	.187	.261	.252	.513	.065	.178	.443	-6.4	8.2	2.3	125	0	0	6	1
Myers, H.	LI	TCBA	.181	.244	.212	.455	.030	.123	.368	-35.2	22.9	1.6	478	0	1	10	2
Herzog, B.	LI	TCBA	.181	.259	.191	.450	.010	.098	.353	-37.0	22.2	1.7	470	0	4	6	1
Marshall, D.	LI	TCBA	.172	.220	.247	.466	.074	.130	.364	-37.3	22.4	1.6	463	0	1	3	3
White, D.	LI	TCBA	.167	.308	.205	.512	.037	.260	.513	-10.8	16.9	2.4	264	1	1	4	1
Forman, B.	LI	TCBA	.143	.172	.143	.315	.000	.036	.204	-7.7	1.5	.8	62	0	0	4	0
Wilson, A.	LI	TCBA	.139	.205	.167	.372	.028	.111	.290	-4.1	1.4	1.2	39	0	0	0	0
Davis, G.	LI	TCBA	.101	.190	.109	.298	.007	.130	.254	-18.7	3.7	.8	155	0	0	2	0
Killefer, B.	LI	TCBA	.091	.091	.091	.182	.000	.000	.100	-2.0	.1	.2	11	0	0	0	0
Owen, F.	LI	TCBA	.067	.067	.067	.133	.000	.000	.071	-3.0	.1	.1	15	0	0	0	0
Vickers, R.	LI	TCBA	.059	.059	.059	.118	.000	.000	.059	-3.5	.0	.0	17	0	0	0	0
Wright, L.	LI	TCBA	.048	.063	.048	.110	.000	.016	.066	-13.3	.2	.1	68	0	0	4	0
Powell, B.	LI	TCBA	.020	.039	.020	.060	.000	.020	.042	-11.2	.1	.0	52	0	0	1	1
Stremmel, P.	LI	TCBA	.000	.071	.000	.071	.000	.000	.077	-2.9	.0	.0	14	0	1	0	0
Rose, C.	LI	TCBA	.000	.083	.000	.083	.000	.091	.091	-2.4	.0	.1	12	0	0	0	0
Lelivelt, B.	LI	TCBA	.000	.125	.000	.125	.000	.000	.143	-1.4	.1	.3	9	0	1	1	0
Schwenck, R.	LI	TCBA	.000	.200	.000	.200	.000	.250	.250	-.7	.1	.4	5	0	0	0	0
Atkins, T.	LI	TCBA	.000	.000	.000	.000	.000	.000	.000	-.8	.0	.0	3	0	0	0	0
Ford, R.	LI	TCBA	-	-	-	-	-	-	-	.0	-	-	0	0	0	0	0
Long Island Islanders			.200	.263	.250	.513	.050	.138	.426	-325.8	348.6	2.2	5645	4	24	93	28

BRADENTON, FL

BUCKEYES

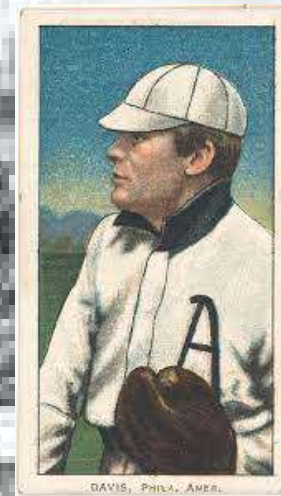
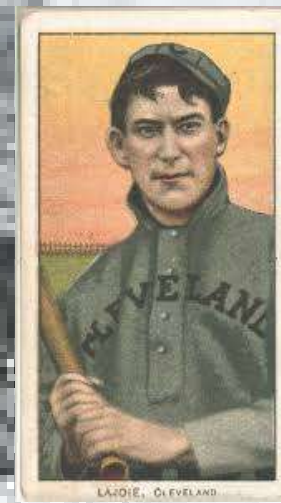
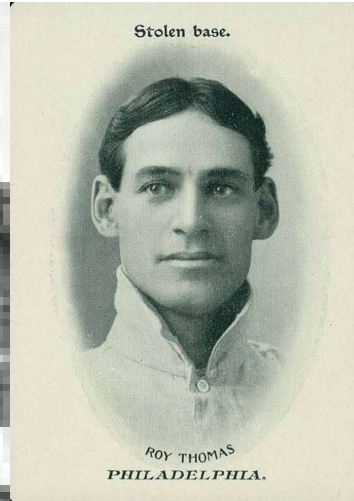
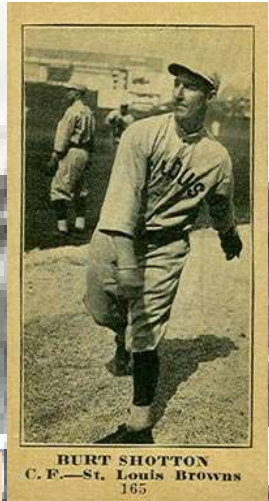


A quilted map of Ohio, with a central diamond shape containing the text "BRADENTON DRAFT PICKS". The map is made of various colored fabrics, including red, blue, and yellow. The text "BRADENTON DRAFT PICKS" is written in a stylized font within the diamond. The map is surrounded by a border of small, repeating patterns.

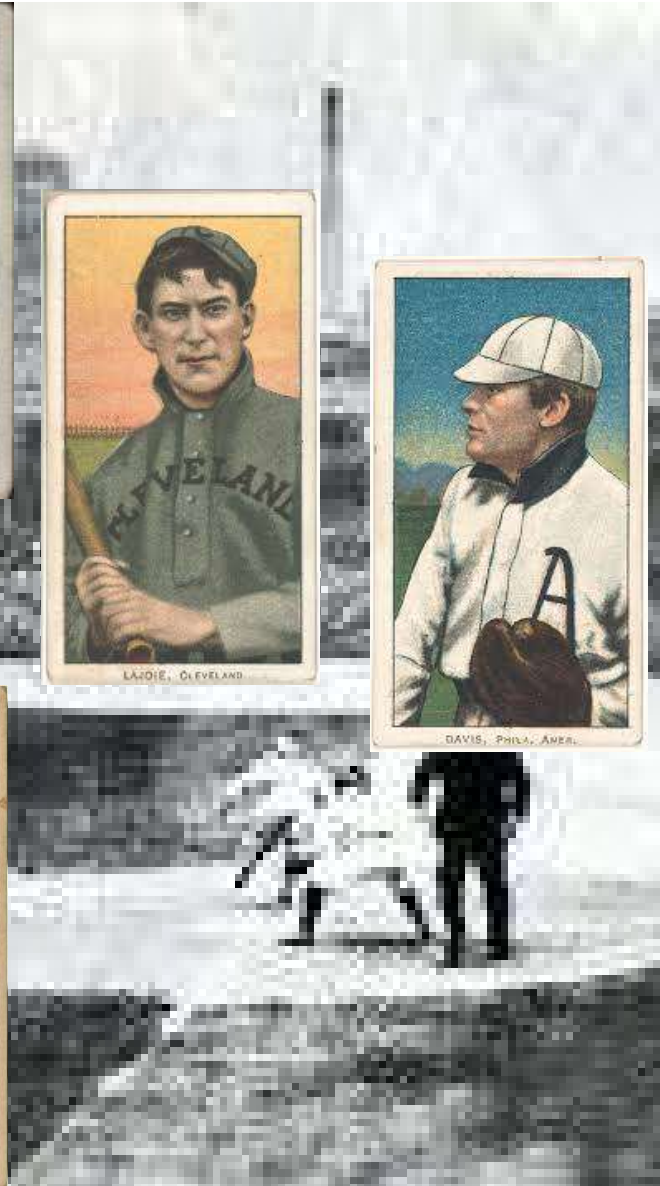
1-Burt Shotton 3-Rebel Oakes 3a-Ward Miller 4-Elmer Knetzer 4a-Del Gainer

Bradenton Buckeyes Draft Picks

- 1-Roy Thomas, CF
- 2-Burt Shotton, LF
- 3-Cy Seymour, RF
- 4-Nap LaJoie, 2B
- 5-Harry Davis, 1B
- 6-Heinie Zimmerman SS
- 7-Woody Wood, 3B
- 8-Gabby Street, C
- 9-Howie Camnitz, P



Bradenton Buckeyes 1910 Opening Day Starting Lineup



10 Pitchers	Tm	Lg	W	L	PCT	SV	ERA	G	GS	CG	SHO	QS	IP	H	R	ER	HR	SO	BB
Stem, F.	BR	TCBA	0	0	-	1	.00	5	0	0	0	0	4.0	6	3	0	0	3	1
Overall, O.	BR	TCBA	27	7	.794	3	1.12	43	37	23	9	34	322.0	157	60	40	1	238	90
Camnitz, H.	BR	TCBA	24	12	.667	0	2.01	43	38	16	5	29	304.1	206	94	68	0	154	83
Wood, W.	BR	TCBA	1	0	1.000	22	2.08	25	0	0	0	0	13.0	14	5	3	0	8	10
Phillippe, D.	BR	TCBA	9	7	.563	5	2.31	33	11	4	1	5	113.0	101	44	29	1	36	12
Willis, V.	BR	TCBA	23	14	.622	0	2.37	42	37	15	2	24	295.2	228	107	78	2	95	97
Coombs, J.	BR	TCBA	6	7	.462	0	3.26	33	19	4	0	8	163.0	138	78	59	1	74	96
Donovan, W.	BR	TCBA	6	8	.429	0	3.93	23	12	3	2	6	107.2	96	58	47	0	54	47
Knetzer, E.	BR	TCBA	1	2	.333	0	8.05	23	0	0	0	0	34.2	56	44	31	2	11	21
Criss, D.	BR	TCBA	0	0	-	0	10.95	20	0	0	0	0	35.1	62	47	43	0	27	30
Bradenton Buckeyes			97	57	.630	31	2.57	290	154	65	19	106	1392.2	1064	540	398	7	700	487

10 Pitchers	Tm	Lg	SUP/9	R/9	ERA	BF/9	BR/9	H/9	BB/9	SO/9	HR/9	ERPT	OBA	BF	BR	IBB	HB	WP	BK
Stem, F.	BR	TCBA	.0	6.75	.00	47.3	15.8	13.5	2.3	6.8	.00	1.3	.300	21	7	0	0	0	0
Overall, O.	BR	TCBA	4.8	1.68	1.12	34.1	7.0	4.4	2.5	6.7	.03	64.8	.143	1221	250	1	4	9	0
Camnitz, H.	BR	TCBA	3.8	2.78	2.01	36.1	8.8	6.1	2.4	4.6	.00	31.1	.187	1222	297	1	9	0	0
Wood, W.	BR	TCBA	.0	3.46	2.08	44.3	16.6	9.7	6.9	5.5	.00	1.2	.259	64	24	0	0	0	0
Phillippe, D.	BR	TCBA	1.8	3.50	2.31	36.6	9.4	8.0	.9	2.9	.08	7.8	.235	460	118	1	6	1	0
Willis, V.	BR	TCBA	4.0	3.26	2.37	37.0	10.3	6.9	3.0	2.9	.06	18.2	.211	1217	339	0	14	0	0
Coombs, J.	BR	TCBA	3.0	4.31	3.26	40.1	13.1	7.6	5.0	4.1	.06	-5.9	.230	726	237	5	8	2	0
Donovan, W.	BR	TCBA	2.9	4.85	3.93	38.9	12.1	8.0	3.8	4.5	.00	-12.0	.242	465	145	1	3	3	0
Knetzer, E.	BR	TCBA	.0	11.42	8.05	47.3	19.2	14.5	4.7	2.9	.52	-19.7	.366	182	74	3	0	1	0
Criss, D.	BR	TCBA	.0	11.97	10.95	50.4	23.9	15.8	7.4	6.9	.00	-31.5	.390	198	94	1	3	2	0
Bradenton Buckeyes			3.5	3.49	2.57	37.3	10.2	6.9	3.1	4.5	.05	55.3	.209	5776	1585	13	47	18	0



26 Players	Tm	Lg	AVG	G	AB	R	H	2B	3B	HR	TB	RBI	SO	BB	ASB	SB	CS	SBP	GDP
Gardner, E.	BR	TCBA	.414	51	87	17	36	7	0	0	43	14	6	4	11	11	0	100.0	2
Lajoie, N.	BR	TCBA	.342	128	462	72	158	45	5	0	213	71	32	37	37	25	12	67.6	8
Downey, R.	BR	TCBA	.283	94	300	33	85	5	0	0	90	22	35	13	18	15	3	83.3	6
Davis, H.	BR	TCBA	.271	145	520	78	141	21	15	2	198	80	53	61	34	29	5	85.3	3
Zimmerman, H.	BR	TCBA	.271	79	192	18	52	10	1	0	64	24	17	7	12	9	3	75.0	3
Elberfeld, K.	BR	TCBA	.261	120	364	46	95	13	7	0	122	43	43	32	38	29	9	76.3	6
Oakes, R.	BR	TCBA	.260	116	404	62	105	9	1	2	122	51	39	38	36	27	9	75.0	6
Thomas, R.	BR	TCBA	.259	88	286	46	74	8	1	0	84	25	21	45	10	8	2	80.0	3
Seymour, C.	BR	TCBA	.256	102	277	60	71	10	5	0	91	24	33	31	29	24	5	82.8	2
Stem, F.	BR	TCBA	.228	90	162	14	37	3	4	0	48	10	27	9	4	3	1	75.0	4
Shotton, B.	BR	TCBA	.226	40	62	10	14	0	0	0	14	6	9	4	2	1	1	50.0	0
Street, G.	BR	TCBA	.222	127	361	19	80	13	0	0	93	36	44	26	3	3	0	100.0	14
Miller, W.	BR	TCBA	.218	126	454	51	99	7	1	0	108	44	52	42	34	28	6	82.4	6
Wood, W.	BR	TCBA	.212	152	515	43	109	23	6	5	159	67	104	38	0	0	0	-	15
Archer, J.	BR	TCBA	.205	74	156	13	32	3	1	1	40	10	34	13	4	4	0	100.0	1
Camnitz, H.	BR	TCBA	.194	43	98	9	19	2	0	0	21	5	17	10	0	0	0	-	0
Phillippe, D.	BR	TCBA	.179	33	28	1	5	0	0	0	5	1	6	0	0	0	0	-	0
Durbin, K.	BR	TCBA	.178	43	45	6	8	0	0	0	8	4	8	8	0	0	0	-	0
Overall, O.	BR	TCBA	.168	43	107	15	18	7	1	1	30	16	13	13	0	0	0	-	5
Gainer, D.	BR	TCBA	.167	11	6	1	1	0	0	0	1	1	1	0	0	0	0	-	0
Criss, D.	BR	TCBA	.157	54	51	2	8	4	0	0	12	8	4	1	0	0	0	-	2
Coombs, J.	BR	TCBA	.156	33	45	3	7	4	0	0	11	2	8	1	0	0	0	-	1
Dolan, C.	BR	TCBA	.106	77	66	5	7	0	0	0	7	2	9	18	0	0	0	-	1
Willis, V.	BR	TCBA	.099	42	101	8	10	2	3	0	18	9	11	4	0	0	0	-	2
Donovan, W.	BR	TCBA	.065	23	31	1	2	0	0	0	2	0	4	2	0	0	0	-	0
Knetzer, E.	BR	TCBA	.000	23	5	0	0	0	0	0	0	0	0	0	0	0	0	-	0
Bradenton Buckeyes			.246	1957	5185	633	1273	196	51	11	1604	575	630	457	272	216	56	79.4	90

Bradenton Buckeyes

26 Players	Tm	Lg	AVG	OBP	SLG	OPS	ISO	SECA	TA	RCON	RC	RC/G	PA	IBB	HBP	SH	SF
Gardner, E.	BR	TCBA	.414	.435	.494	.929	.080	.253	1.094	10.8	20.7	10.3	92	1	0	0	1
Lajoie, N.	BR	TCBA	.342	.398	.461	.859	.119	.227	.873	29.9	85.2	7.0	510	7	8	0	3
Downey, R.	BR	TCBA	.283	.314	.300	.614	.017	.100	.531	-5.6	29.8	3.4	327	0	1	12	1
Davis, H.	BR	TCBA	.271	.351	.381	.731	.110	.273	.765	16.0	79.6	5.4	603	3	8	4	10
Zimmerman, H.	BR	TCBA	.271	.296	.333	.629	.063	.130	.555	-3.6	19.5	3.4	210	0	1	7	3
Elberfeld, K.	BR	TCBA	.261	.339	.335	.674	.074	.217	.687	2.6	45.9	4.1	424	0	12	14	2
Oakes, R.	BR	TCBA	.260	.327	.302	.629	.042	.181	.605	-4.7	43.3	3.7	450	2	3	3	2
Thomas, R.	BR	TCBA	.259	.359	.294	.653	.035	.213	.636	.7	35.4	4.2	342	0	1	8	2
Seymour, C.	BR	TCBA	.256	.334	.329	.663	.072	.253	.700	2.8	35.5	4.4	317	2	3	3	3
Stem, F.	BR	TCBA	.228	.267	.296	.564	.068	.136	.462	-7.7	12.8	2.5	178	0	0	6	1
Shotton, B.	BR	TCBA	.226	.290	.226	.516	.000	.065	.429	-3.9	4.6	2.5	70	0	2	1	1
Street, G.	BR	TCBA	.222	.272	.258	.529	.036	.116	.417	-19.2	25.0	2.2	403	4	1	9	6
Miller, W.	BR	TCBA	.218	.285	.238	.522	.020	.161	.488	-21.3	35.3	2.5	504	2	1	5	2
Wood, W.	BR	TCBA	.212	.261	.309	.570	.097	.171	.470	-22.6	41.5	2.6	572	0	1	5	13
Archer, J.	BR	TCBA	.205	.263	.256	.520	.051	.160	.456	-8.3	12.4	2.5	178	0	0	7	2
Camnitz, H.	BR	TCBA	.194	.269	.214	.483	.020	.122	.392	-7.0	7.1	2.1	118	0	0	10	0
Phillippe, D.	BR	TCBA	.179	.179	.179	.357	.000	.000	.217	-3.5	1.2	1.1	33	0	0	5	0
Durbin, K.	BR	TCBA	.178	.302	.178	.480	.000	.178	.432	-2.9	3.2	2.2	55	0	0	2	0
Overall, O.	BR	TCBA	.168	.262	.280	.543	.112	.234	.468	-5.5	8.0	2.1	131	0	1	9	1
Gainer, D.	BR	TCBA	.167	.167	.167	.333	.000	.000	.200	-.8	.3	1.0	9	0	0	3	0
Criss, D.	BR	TCBA	.157	.200	.235	.435	.078	.098	.333	-4.7	2.1	1.3	55	1	2	0	1
Coombs, J.	BR	TCBA	.156	.208	.244	.453	.089	.111	.359	-3.9	2.5	1.5	54	0	2	6	0
Dolan, C.	BR	TCBA	.106	.298	.106	.404	.000	.273	.417	-5.6	3.9	1.6	89	0	0	5	0
Willis, V.	BR	TCBA	.099	.132	.178	.310	.079	.119	.237	-14.5	2.5	.7	115	0	0	9	1
Donovan, W.	BR	TCBA	.065	.171	.065	.236	.000	.065	.207	-5.0	.8	.6	39	0	2	4	0
Knetzer, E.	BR	TCBA	.000	.000	.000	.000	.000	.000	.000	-1.3	.0	.0	5	0	0	0	0
Bradenton Buckeyes			.246	.310	.309	.619	.064	.183	.573	-88.7	539.1	3.4	5883	22	49	137	55



CLEVELAND NAPS



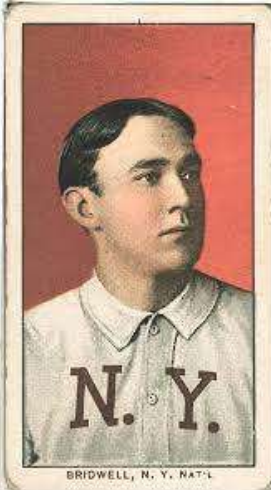
Cleveland Naps Draft Picks

**1-Tommy Clarke 2-Kid Speer 3-Dolly Gray 4-John Raleigh
5-Pryor McElveen 6-Harry Otis 7-Joe Ohl 8-John Kull**

**1910 Opening Day
Starting Lineup
CLEVELAND NAPS**



STEINFELDT, CHICAGO NAT'L



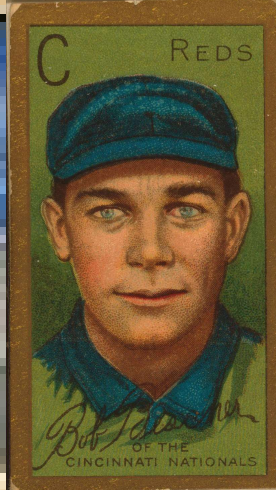
BRIDWELL, N. Y. NAT'L



HINCHMAN, CLEVELAND



OLDRING, PHILA. AMER.



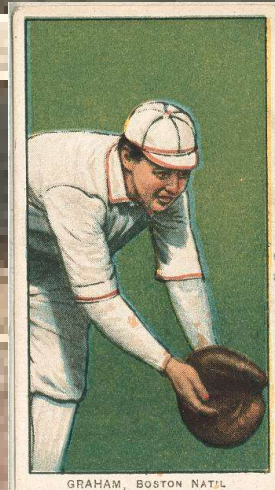
OF THE CINCINNATI NATIONALS



COLLINS, PHILA. AMER.



MATHEWSON, N. Y. NAT'L



GRAHAM, BOSTON NAT'L

- 1-Bob Bescher, RF**
- 2-Roy Hobbs, 1B**
- 3-Al Bridwell, SS**
- 4-Eddie Collins, 2B**
- 5-Bill Hinchman, LF**
- 6-Harry Steinfeldt, 3B**
- 7-Rube Oldring, CF**
- 8-Peaches Graham, C**
- 9-Christy Mathewson, P**



13 Pitchers		Tm	Lg	W	L	PCT	SV	ERA	G	GS	CG	SHO	QS	IP	H	R	ER	HR	SO	BB
Ohl, J.	CL	TCBA	0	0	-	2	.00	8	0	0	0	0	0	6.0	3	1	0	0	3	4
Mathewson, C.	CL	TCBA	26	8	.765	2	1.37	38	35	30	7	29	314.2	180	69	48	2	181	51	
Hobbs, R.	CL	TCBA	0	0	-	0	2.25	1	0	0	0	0	4.0	1	1	1	0	3	0	
Pfiester, J.	CL	TCBA	15	9	.625	0	2.34	27	27	16	1	16	222.2	170	81	58	2	119	59	
Otis, H.	CL	TCBA	1	1	.500	3	2.48	14	3	1	0	2	32.2	27	15	9	0	7	15	
Coveleski, H.	CL	TCBA	11	9	.550	0	2.89	22	19	8	2	13	149.1	121	56	48	2	86	47	
Hughes, T.	CL	TCBA	7	9	.438	2	3.06	25	14	7	1	10	135.1	125	60	46	5	81	33	
Speer, K.	CL	TCBA	4	10	.286	0	3.38	21	15	7	0	8	119.2	146	59	45	3	44	21	
Foxen, B.	CL	TCBA	5	4	.556	1	4.12	23	10	3	0	2	83.0	93	53	38	2	43	40	
Gray, D.	CL	TCBA	4	8	.333	0	4.67	24	11	7	1	3	113.2	140	72	59	1	39	55	
Kull, J.	CL	TCBA	2	1	.667	0	5.13	15	0	0	0	0	26.1	32	20	15	1	18	12	
Raleigh, J.	CL	TCBA	5	7	.417	0	5.52	23	12	4	0	3	107.2	140	74	66	0	46	32	
McCarthy, T.	CL	TCBA	4	4	.500	0	5.68	16	8	3	0	3	71.1	96	62	45	5	38	37	
Cleveland Naps			84	70	.545	10	3.10	257	154	86	12	89	1386.1	1274	623	478	23	708	406	

13 Pitchers		Tm	Lg	SUP/9	R/9	ERA	BF/9	BR/9	H/9	BB/9	SO/9	HR/9	ERPT	OBA	BF	BR	IBB	HB	WP	BK
Ohl, J.	CL	TCBA	.0	1.50	.00	37.5	10.5	4.5	6.0	4.5	.00	2.0	.150	25	7	0	0	0	0	
Mathewson, C.	CL	TCBA	4.3	1.97	1.37	34.0	6.5	5.1	1.3	5.2	.06	54.4	.163	1189	226	5	0	4	0	
Hobbs, R.	CL	TCBA	.0	2.25	2.25	31.5	2.3	2.3	.0	6.8	.00	.3	.071	14	1	0	0	0	0	
Pfiester, J.	CL	TCBA	5.5	3.27	2.34	36.7	9.5	6.9	2.3	4.8	.08	14.5	.209	908	236	3	10	1	0	
Otis, H.	CL	TCBA	1.9	4.13	2.48	38.6	11.8	7.4	4.1	1.9	.00	1.6	.231	140	43	0	1	0	0	
Coveleski, H.	CL	TCBA	4.7	3.38	2.89	37.4	10.6	7.3	2.8	5.2	.12	.6	.223	621	176	0	8	3	0	
Hughes, T.	CL	TCBA	3.4	3.99	3.06	37.0	10.6	8.3	2.1	5.4	.33	-1.9	.249	557	160	1	3	0	0	
Speer, K.	CL	TCBA	3.2	4.44	3.38	39.4	13.0	11.0	1.6	3.3	.23	-6.0	.302	524	173	0	6	3	0	
Foxen, B.	CL	TCBA	4.6	5.75	4.12	41.5	14.6	10.1	4.1	4.7	.22	-11.0	.278	383	135	2	4	3	0	
Gray, D.	CL	TCBA	2.5	5.70	4.67	41.4	15.8	11.1	4.4	3.1	.08	-22.0	.313	523	199	0	4	2	0	
Kull, J.	CL	TCBA	.0	6.84	5.13	42.4	15.4	10.9	4.1	6.2	.34	-6.4	.296	124	45	0	1	0	0	
Raleigh, J.	CL	TCBA	3.2	6.19	5.52	41.4	15.0	11.7	2.7	3.8	.00	-31.0	.320	495	180	0	8	8	0	
McCarthy, T.	CL	TCBA	3.9	7.82	5.68	43.7	17.3	12.1	4.7	4.8	.63	-21.8	.324	346	137	0	4	1	0	
Cleveland Naps			3.9	4.04	3.10	38.0	11.2	8.3	2.6	4.6	.15	-26.8	.244	5849	1718	11	49	25	0	



27 Players	Tm	Lg	AVG	G	AB	R	H	2B	3B	HR	TB	RBI	SO	BB	ASB	SB	CS	SBP	GDP
Kull, J.	CL	TCBA	.500	15	4	0	2	0	0	0	2	0	1	0	0	0	0	-	0
Collins, E.	CL	TCBA	.380	151	553	118	210	26	9	4	266	88	42	84	92	68	24	73.9	2
Bridwell, A.	CL	TCBA	.287	135	485	79	139	14	4	0	161	67	51	69	39	28	11	71.8	4
Otis, H.	CL	TCBA	.286	14	7	1	2	1	0	0	3	0	1	0	0	0	0	-	0
Schlei, A.	CL	TCBA	.274	75	252	31	69	15	0	0	84	33	32	32	2	1	1	50.0	7
Steinfeldt, H.	CL	TCBA	.271	145	532	65	144	30	8	0	190	100	61	61	24	18	6	75.0	8
Bescher, B.	CL	TCBA	.225	113	414	71	93	13	5	0	116	28	64	57	85	66	19	77.6	5
Hinchman, B.	CL	TCBA	.224	122	441	57	99	23	11	0	144	55	40	40	25	18	7	72.0	2
Graham, P.	CL	TCBA	.217	95	313	35	68	3	7	0	85	22	48	37	7	6	1	85.7	4
Oldring, R.	CL	TCBA	.214	113	397	38	85	17	9	0	120	54	50	25	12	8	4	66.7	14
Shaw, A.	CL	TCBA	.210	110	352	47	74	11	8	1	104	35	42	42	23	18	5	78.3	5
Hobbs, R.	CL	TCBA	.209	150	559	46	117	19	5	7	167	70	105	42	0	0	0	-	20
Clarke, T.	CL	TCBA	.208	33	53	8	11	1	2	0	16	6	4	6	2	2	0	100.0	1
Foxen, B.	CL	TCBA	.200	23	20	5	4	2	0	0	6	1	4	6	0	0	0	-	0
Mathewson, C.	CL	TCBA	.183	38	120	13	22	6	0	0	28	6	12	4	3	1	2	33.3	6
McCarthy, T.	CL	TCBA	.182	16	22	4	4	0	0	0	4	1	4	2	0	0	0	-	0
Pfiester, J.	CL	TCBA	.177	27	79	11	14	1	0	0	15	4	13	10	2	2	0	100.0	1
McElveen, P.	CL	TCBA	.168	60	131	12	22	4	1	1	31	9	17	13	0	0	0	-	1
Hemphill, C.	CL	TCBA	.165	86	200	26	33	6	0	0	39	17	33	31	7	6	1	85.7	1
Kelly, S.	CL	TCBA	.143	32	42	4	6	3	0	0	9	4	7	6	2	1	1	50.0	3
Hughes, T.	CL	TCBA	.140	25	43	5	6	2	2	0	12	1	8	1	0	0	0	-	1
Ritchey, C.	CL	TCBA	.133	22	30	2	4	0	0	0	4	0	6	5	0	0	0	-	1
Speer, K.	CL	TCBA	.125	21	32	5	4	2	0	0	6	1	3	7	0	0	0	-	1
Gray, D.	CL	TCBA	.125	24	32	1	4	1	0	0	5	3	5	2	0	0	0	-	0
Raleigh, J.	CL	TCBA	.114	23	35	1	4	0	0	0	4	0	1	0	0	0	0	-	3
Coveleski, H.	CL	TCBA	.109	22	55	2	6	0	0	0	6	3	7	0	0	0	0	-	3
Ohl, J.	CL	TCBA	-	8	0	0	0	0	0	0	0	0	0	0	0	0	0	-	0
Cleveland Naps			.239	1698	5203	687	1246	200	71	13	1627	608	661	582	325	243	82	74.8	93



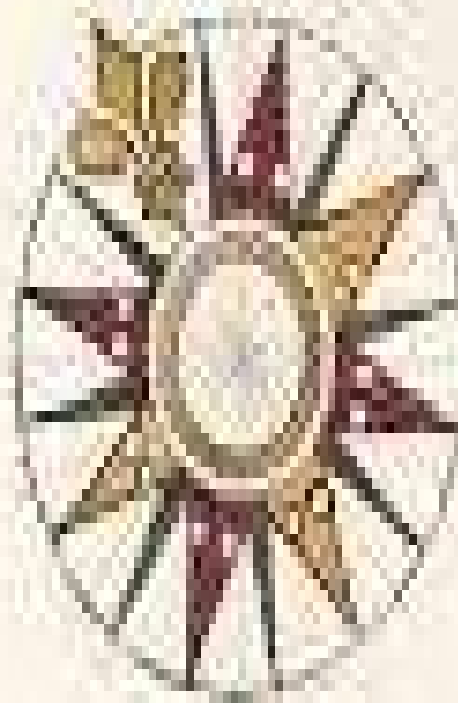
27 Players	Tm	Lg	AVG	OBP	SLG	OPS	ISO	SECA	TA	RCON	RC	RC/G	PA	IBB	HBP	SH	SF
Kull, J.	CL	TCBA	.500	.500	.500	1.000	.000	.000	1.000	.4	1.0	13.5	4	0	0	0	0
Collins, E.	CL	TCBA	.380	.466	.481	.947	.101	.333	1.163	65.8	139.1	9.8	661	13	11	6	7
Bridwell, A.	CL	TCBA	.287	.377	.332	.709	.045	.223	.726	10.3	69.4	5.0	572	1	4	9	5
Otis, H.	CL	TCBA	.286	.286	.429	.714	.143	.143	.600	.0	.9	4.6	7	0	0	0	0
Schlei, A.	CL	TCBA	.274	.357	.333	.691	.060	.187	.628	2.3	31.8	4.3	295	0	3	4	4
Steinfeldt, H.	CL	TCBA	.271	.343	.357	.700	.086	.224	.677	6.8	71.6	4.5	625	1	3	18	11
Bescher, B.	CL	TCBA	.225	.331	.280	.611	.056	.307	.722	.3	47.5	3.7	484	1	10	1	2
Hinchman, B.	CL	TCBA	.224	.304	.327	.631	.102	.218	.610	-7.6	48.3	3.7	498	1	12	2	3
Graham, P.	CL	TCBA	.217	.297	.272	.569	.054	.188	.512	-11.6	28.7	3.0	361	0	0	8	3
Oldring, R.	CL	TCBA	.214	.280	.302	.582	.088	.161	.512	-14.6	34.1	2.7	454	0	16	4	12
Shaw, A.	CL	TCBA	.210	.300	.295	.595	.085	.241	.583	-8.7	34.6	3.2	400	2	4	0	2
Hobbs, R.	CL	TCBA	.209	.266	.299	.565	.089	.165	.459	-26.0	42.3	2.4	610	1	3	1	5
Clarke, T.	CL	TCBA	.208	.288	.302	.590	.094	.245	.558	-1.4	5.0	3.2	59	0	0	0	0
Foxen, B.	CL	TCBA	.200	.467	.300	.767	.100	.400	1.000	1.8	4.1	6.5	31	0	4	1	0
Mathewson, C.	CL	TCBA	.183	.213	.233	.446	.050	.075	.321	-11.6	4.6	1.2	127	0	1	0	2
McCarthy, T.	CL	TCBA	.182	.250	.182	.432	.000	.091	.333	-2.0	1.2	1.7	25	0	0	1	0
Pfiester, J.	CL	TCBA	.177	.267	.190	.457	.013	.165	.409	-5.6	5.3	2.0	95	0	0	5	1
McElveen, P.	CL	TCBA	.168	.247	.237	.483	.069	.168	.409	-9.7	8.6	2.0	149	0	1	3	1
Hemphill, C.	CL	TCBA	.165	.279	.195	.474	.030	.210	.456	-12.8	13.9	2.2	234	0	1	1	1
Kelly, S.	CL	TCBA	.143	.250	.214	.464	.071	.214	.400	-3.5	1.9	1.2	49	0	0	1	0
Hughes, T.	CL	TCBA	.140	.213	.279	.492	.140	.163	.421	-3.4	2.5	1.8	48	0	3	1	0
Ritchey, C.	CL	TCBA	.133	.257	.133	.390	.000	.167	.333	-3.0	1.2	1.2	35	0	0	0	0
Speer, K.	CL	TCBA	.125	.282	.188	.470	.063	.281	.448	-2.2	2.2	1.9	41	0	0	2	0
Gray, D.	CL	TCBA	.125	.176	.156	.333	.031	.094	.250	-4.2	1.1	1.0	36	0	0	2	0
Raleigh, J.	CL	TCBA	.114	.114	.114	.229	.000	.000	.118	-5.9	.1	.1	37	0	0	2	0
Coveleski, H.	CL	TCBA	.109	.107	.109	.216	.000	.000	.115	-9.5	.4	.2	59	0	0	3	1
Ohl, J.	CL	TCBA	-	-	-	-	-	-	-	.0	-	-	0	0	0	0	0
Cleveland Naps			.239	.322	.313	.634	.073	.216	.612	-55.3	573.7	3.6	5996	20	76	75	60



Welcome To
Bergen County

BARFLIES

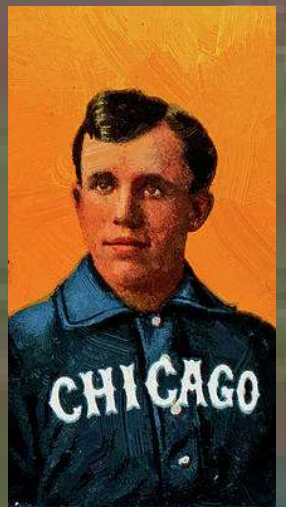
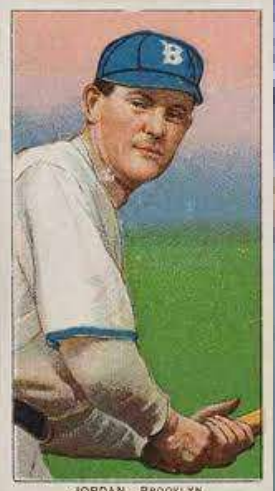
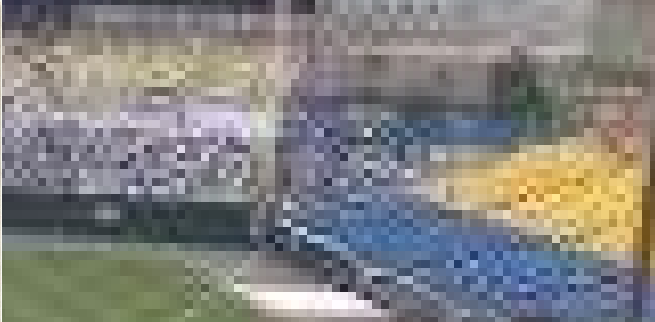
- 2-Ray Demmitt
- 3-Frank Roth
- 4-Jap Barbeau
- 5-Tom Raftery
- 6-Simon Nicholls
- 7-Jack Slattery
- 8-William Matthews



Bergen Barflies Draft Picks

Bergen County, New Jersey

1-Fred Parent, SS
2-George Stone, CF
3-Tim Jordan, 1B
4-Ray Demmitt, RF
5-Tom Raftery, LF
6-Jap Barbeau, 3B
7-Lefty Meade, 2B
8-Frank Roth, C
9-Three Finger Brown P



**Bergen Barflies 1910
 Opening Day Lineup**



11 Pitchers	Tm	Lg	W	L	PCT	SV	ERA	G	GS	CG	SHO	QS	IP	H	R	ER	HR	SO	BB
Cooney, B.	BE	TCBA	0	0	-	0	.00	12	0	0	0	0	7.0	5	2	0	0	3	2
Matthews, B.	BE	TCBA	0	3	.000	0	1.35	14	0	0	0	0	13.1	17	10	2	0	2	10
Brown, T.	BE	TCBA	23	15	.605	1	1.54	47	41	24	6	26	363.1	214	105	62	0	242	68
Summers, E.	BE	TCBA	14	18	.438	0	1.95	38	38	19	7	22	300.2	206	96	65	2	106	66
Wiltse, H.	BE	TCBA	12	22	.353	0	2.34	37	35	19	2	13	276.2	229	131	72	4	121	75
Arellanes, F.	BE	TCBA	14	19	.424	5	2.91	44	26	16	3	14	244.0	194	107	79	1	77	59
Howell, H.	BE	TCBA	2	5	.286	0	3.75	26	8	2	1	3	86.1	98	50	36	1	51	22
Savidge, R.	BE	TCBA	0	0	-	0	3.77	18	0	0	0	0	31.0	30	23	13	0	21	13
Meade, L.	BE	TCBA	0	0	-	0	5.68	3	0	0	0	0	6.1	15	8	4	1	1	4
Lindaman, V.	BE	TCBA	0	7	.000	0	6.54	13	6	1	0	0	52.1	70	53	38	0	21	37
Carmichael, C.	BE	TCBA	0	0	-	3	7.04	17	0	0	0	0	7.2	11	7	6	0	5	3
Bergen Barflies			65	89	.422	9	2.44	269	154	81	19	78	1388.2	1089	592	377	9	650	359

11 Pitchers	Tm	Lg	SUP/9	R/9	ERA	BF/9	BR/9	H/9	BB/9	SO/9	HR/9	ERPT	OBA	BF	BR	IBB	HB	WP	BK
Cooney, B.	BE	TCBA	.0	2.57	.00	38.6	9.0	6.4	2.6	3.9	.00	2.3	.179	30	7	0	0	0	0
Matthews, B.	BE	TCBA	.0	6.75	1.35	49.3	18.2	11.5	6.8	1.4	.00	2.3	.298	73	27	0	0	0	0
Brown, T.	BE	TCBA	3.7	2.60	1.54	34.6	7.3	5.3	1.7	6.0	.00	56.3	.168	1397	294	1	13	4	0
Summers, E.	BE	TCBA	3.2	2.87	1.95	35.6	8.3	6.2	2.0	3.2	.06	32.9	.190	1189	277	0	5	0	1
Wiltse, H.	BE	TCBA	3.3	4.26	2.34	38.1	10.4	7.4	2.4	3.9	.13	18.1	.220	1170	319	0	15	1	0
Arellanes, F.	BE	TCBA	3.2	3.95	2.91	37.0	9.7	7.2	2.2	2.8	.04	.4	.216	1003	263	0	10	1	0
Howell, H.	BE	TCBA	2.4	5.21	3.75	39.7	12.6	10.2	2.3	5.3	.10	-7.9	.277	381	121	0	1	2	0
Savidge, R.	BE	TCBA	.0	6.68	3.77	40.9	13.9	8.7	3.8	6.1	.00	-2.9	.246	141	48	0	5	3	0
Meade, L.	BE	TCBA	.0	11.37	5.68	54.0	27.0	21.3	5.7	1.4	1.42	-1.9	.441	38	19	0	0	0	0
Lindaman, V.	BE	TCBA	1.0	9.11	6.54	45.6	18.6	12.0	6.4	3.6	.00	-21.0	.318	265	108	0	1	0	0
Carmichael, C.	BE	TCBA	.0	8.22	7.04	47.0	17.6	12.9	3.5	5.9	.00	-3.5	.314	40	15	0	1	0	0
Bergen Barflies			3.1	3.84	2.44	37.1	9.7	7.1	2.3	4.2	.06	75.0	.212	5727	1498	1	51	11	1

28 Players	Tm	Lg	AVG	G	AB	R	H	2B	3B	HR	TB	RBI	SO	BB	ASB	SB	CS	SBP	GDP
Jacklitsch, F.	BE	TCBA	.400	28	35	7	14	1	0	0	15	5	5	14	1	1	0	100.0	1
Parent, F.	BE	TCBA	.265	123	501	68	133	9	1	0	144	33	61	43	60	49	11	81.7	7
Jordan, T.	BE	TCBA	.265	89	306	51	81	20	4	0	109	42	28	64	29	21	8	72.4	5
Demmitt, R.	BE	TCBA	.264	121	436	62	115	16	6	3	152	57	66	61	16	10	6	62.5	10
Stone, G.	BE	TCBA	.259	78	316	45	82	9	2	2	101	29	29	24	17	12	5	70.6	5
Hulswitt, R.	BE	TCBA	.236	68	250	31	59	5	4	0	72	23	20	21	11	8	3	72.7	5
Osborn, F.	BE	TCBA	.229	32	48	8	11	3	0	0	14	2	2	1	3	1	2	33.3	0
Barbeau, J.	BE	TCBA	.227	145	541	60	123	16	3	0	145	49	80	59	50	39	11	78.0	9
Meade, L.	BE	TCBA	.218	146	559	51	122	13	5	9	172	63	110	33	3	0	3	.0	13
Raferty, T.	BE	TCBA	.211	146	544	59	115	34	12	0	173	75	78	67	23	18	5	78.3	13
Roth, F.	BE	TCBA	.211	92	323	24	68	16	2	0	88	27	56	15	2	2	0	100.0	7
Gardner, L.	BE	TCBA	.209	33	43	6	9	1	4	0	18	6	7	7	2	2	0	100.0	1
Slattery, J.	BE	TCBA	.203	49	148	9	30	7	0	0	37	10	24	0	1	1	0	100.0	5
Howard, P.	BE	TCBA	.200	5	15	0	3	3	0	0	6	1	4	0	0	0	0	-	0
Nicholls, S.	BE	TCBA	.194	59	175	12	34	4	2	0	42	16	23	11	0	0	0	-	1
Wiltse, H.	BE	TCBA	.194	37	98	12	19	1	0	0	20	6	12	0	1	0	1	.0	0
Thoney, J.	BE	TCBA	.185	15	27	3	5	0	0	0	5	2	4	3	2	2	0	100.0	1
Clymer, O.	BE	TCBA	.182	99	340	31	62	12	7	0	88	35	44	28	16	11	5	68.8	5
Catterson, T.	BE	TCBA	.179	57	162	17	29	0	0	0	29	14	24	19	0	0	0	-	3
Brown, T.	BE	TCBA	.177	47	124	9	22	4	0	0	26	9	14	7	0	0	0	-	0
Arellanes, F.	BE	TCBA	.169	44	83	6	14	0	0	0	14	4	13	1	1	0	1	.0	0
Summers, E.	BE	TCBA	.150	38	100	6	15	2	0	0	17	5	25	6	0	0	0	-	0
Lindaman, V.	BE	TCBA	.133	13	15	0	2	0	0	0	2	0	0	0	0	0	0	-	0
Howell, H.	BE	TCBA	.087	27	23	1	2	0	0	0	2	0	3	0	0	0	0	-	0
Savidge, R.	BE	TCBA	.000	18	5	0	0	0	0	0	0	0	1	0	0	0	0	-	0
Carmichael, C.	BE	TCBA	-	17	0	0	0	0	0	0	0	1	0	0	0	0	0	-	0
Cooney, B.	BE	TCBA	.000	13	1	0	0	0	0	0	0	0	0	0	0	0	0	-	0
Matthews, B.	BE	TCBA	-	14	0	0	0	0	0	0	0	0	0	0	0	0	0	-	0
Bergen Barflies			.224	1653	5218	578	1169	176	52	14	1491	514	733	484	238	177	61	74.4	91



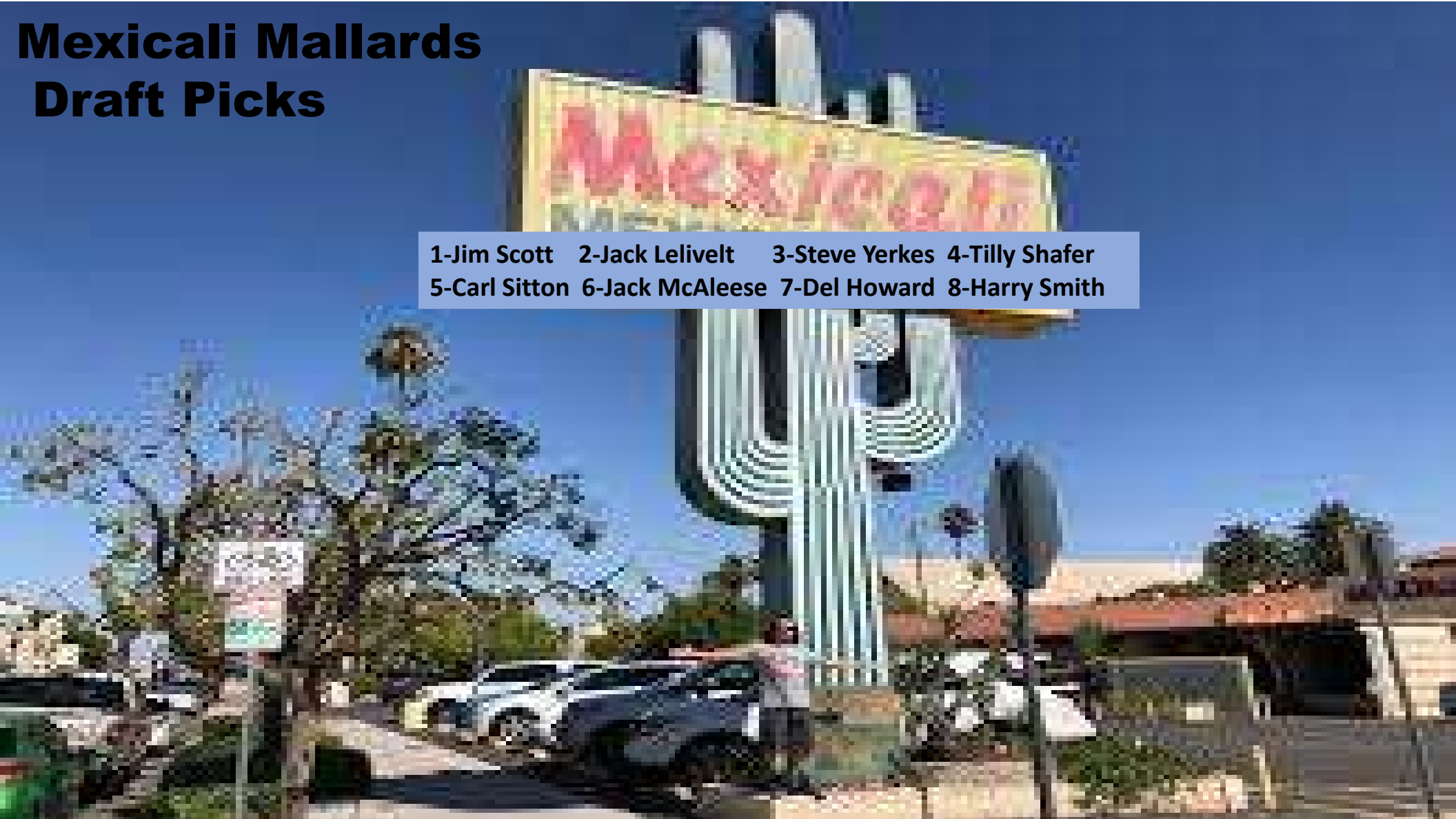
28 Players	Tm	Lg	AVG	OBP	SLG	OPS	ISO	SECA	TA	RCON	RC	RC/G	PA	IBB	HBP	SH	SF
Jacklitsch, F.	BE	TCBA	.400	.580	.429	1.009	.029	.457	1.409	6.8	10.9	13.3	50	0	1	0	0
Parent, F.	BE	TCBA	.265	.323	.287	.610	.022	.184	.614	-4.6	53.4	3.6	557	0	1	9	3
Jordan, T.	BE	TCBA	.265	.394	.356	.750	.092	.343	.828	13.7	50.0	5.5	379	0	3	3	3
Demmitt, R.	BE	TCBA	.264	.358	.349	.707	.085	.234	.680	5.8	58.1	4.5	518	4	6	10	5
Stone, G.	BE	TCBA	.259	.311	.320	.630	.060	.158	.561	-6.2	32.2	3.5	345	1	0	4	1
Hulswitt, R.	BE	TCBA	.236	.297	.288	.585	.052	.156	.513	-8.8	22.1	3.0	274	0	1	1	1
Osborn, F.	BE	TCBA	.229	.245	.292	.537	.063	.063	.410	-3.7	3.1	2.0	51	0	0	2	0
Barbeau, J.	BE	TCBA	.227	.304	.268	.572	.041	.201	.559	-15.6	50.6	3.0	623	0	2	17	4
Meade, L.	BE	TCBA	.218	.260	.308	.568	.089	.143	.455	-28.0	42.9	2.5	599	1	1	0	6
Rafertry, T.	BE	TCBA	.211	.298	.318	.616	.107	.254	.582	-10.9	54.6	3.3	619	0	2	2	4
Roth, F.	BE	TCBA	.211	.266	.272	.538	.062	.115	.439	-17.1	23.9	2.4	354	0	10	3	2
Gardner, L.	BE	TCBA	.209	.333	.419	.752	.209	.419	.800	1.5	6.6	5.1	51	0	1	0	0
Slattery, J.	BE	TCBA	.203	.217	.250	.467	.047	.054	.333	-12.0	7.2	1.6	152	0	3	0	1
Howard, P.	BE	TCBA	.200	.294	.400	.694	.200	.200	.667	.1	1.9	4.3	17	0	2	0	0
Nicholls, S.	BE	TCBA	.194	.242	.240	.482	.046	.109	.380	-13.2	11.2	2.1	193	0	1	3	3
Wiltse, H.	BE	TCBA	.194	.218	.204	.422	.010	.000	.287	-10.3	4.4	1.5	102	0	3	1	0
Thoney, J.	BE	TCBA	.185	.267	.185	.452	.000	.185	.435	-1.6	1.6	1.9	30	0	0	0	0
Clymer, O.	BE	TCBA	.182	.243	.259	.502	.076	.176	.444	-23.1	22.9	2.1	382	0	1	7	5
Catterson, T.	BE	TCBA	.179	.268	.179	.447	.000	.117	.360	-13.3	9.0	1.7	186	0	1	3	1
Brown, T.	BE	TCBA	.177	.221	.210	.431	.032	.089	.324	-11.7	6.6	1.6	138	0	0	7	0
Arellanes, F.	BE	TCBA	.169	.179	.169	.347	.000	.000	.214	-11.1	2.7	1.0	90	0	0	6	0
Summers, E.	BE	TCBA	.150	.198	.170	.368	.020	.080	.271	-11.7	4.1	1.2	112	0	0	6	0
Lindaman, V.	BE	TCBA	.133	.133	.133	.267	.000	.000	.154	-2.3	.3	.6	15	0	0	0	0
Howell, H.	BE	TCBA	.087	.087	.087	.174	.000	.000	.095	-4.3	.2	.3	24	0	0	1	0
Savidge, R.	BE	TCBA	.000	.000	.000	.000	.000	.000	.000	-1.3	.0	.0	5	0	0	0	0
Carmichael, C.	BE	TCBA	-	.000	-	-	-	-	-	.0	.0	.0	1	0	0	0	1
Cooney, B.	BE	TCBA	.000	.000	.000	.000	.000	.000	.000	-.3	.0	.0	1	0	0	0	0
Matthews, B.	BE	TCBA	-	-	-	-	-	-	-	.0	-	-	0	0	0	0	0
Bergen Barflies			.224	.293	.286	.578	.062	.177	.522	-183.3	467.9	2.9	5868	6	39	85	40



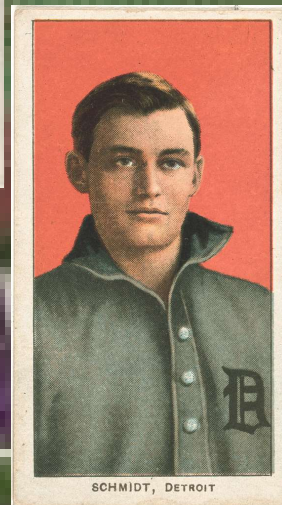
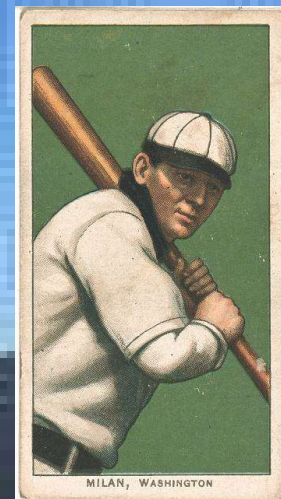
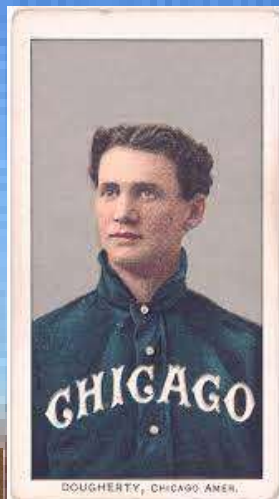
MALLARDS

Mexicali Mallards Draft Picks

1-Jim Scott 2-Jack Lelivelt 3-Steve Yerkes 4-Tilly Shafer
5-Carl Sitton 6-Jack McAleese 7-Del Howard 8-Harry Smith



- 1-Jack Barry, SS
- 2-Clyde Milan, RF
- 3-Patsy Dougherty, LF
- 4-Moose McCormick, CF
- 5-Lee Tannehill, 3B
- 6-Del Howard, 1B
- 7-Jimmy Williams, 2B
- 8-Boss Schmidt, C
- 9-Lew Moren, P



Starting Lineup 1910 Opening Day
for the Mexicali Mallards

May 9

Player-Manager Al Keefer delivers a 10th inning pinch-hit home run to defeat Bradenton, 6-5



12 Pitchers	Tm	Lg	W	L	PCT	SV	ERA	G	GS	CG	SHO	QS	IP	H	R	ER	HR	SO	BB
Barry, J.	ME	TCBA	0	0	-	0	.00	1	0	0	0	0	.2	2	0	0	0	0	0
Suggs, G.	ME	TCBA	3	3	.500	3	1.28	22	3	2	0	3	56.1	32	11	8	0	36	12
Moren, L.	ME	TCBA	15	18	.455	0	2.06	36	32	21	6	19	279.0	210	106	64	3	150	81
Higginbotham, I.	ME	TCBA	6	9	.400	3	2.09	36	8	3	0	6	99.0	79	34	23	1	57	32
Adams, B.	ME	TCBA	6	7	.462	4	2.31	24	16	9	2	11	136.1	99	52	35	2	91	36
Scott, J.	ME	TCBA	10	20	.333	1	2.65	32	31	17	4	17	244.1	203	105	72	0	130	106
Schlitzer, B.	ME	TCBA	6	6	.500	0	3.75	21	10	3	0	4	100.2	105	58	42	0	41	41
Wilson, P.	ME	TCBA	4	7	.364	0	3.89	16	12	2	0	3	81.0	94	60	35	2	43	41
Keefer, A.	ME	TCBA	0	2	.000	0	4.24	18	2	2	0	0	74.1	103	57	35	0	18	33
McIntire, H.	ME	TCBA	8	13	.381	0	4.42	28	28	6	0	11	197.1	225	127	97	1	113	85
Steele, E.	ME	TCBA	5	4	.556	0	4.52	18	9	1	0	3	71.2	96	50	36	0	53	21
Sitton, C.	ME	TCBA	0	2	.000	0	4.53	13	3	0	0	1	45.2	61	40	23	1	14	22
Mexicali Mallards			63	91	.409	11	3.05	265	154	66	12	78	1386.1	1309	700	470	10	746	510

12 Pitchers	Tm	Lg	SUP/9	R/9	ERA	BF/9	BR/9	H/9	BB/9	SO/9	HR/9	ERPT	OBA	BF	BR	IBB	HB	WP	BK
Barry, J.	ME	TCBA	.0	.00	.00	54.0	27.0	27.0	.0	.0	.00	.2	.667	4	2	0	0	0	0
Suggs, G.	ME	TCBA	2.9	1.76	1.28	33.9	7.0	5.1	1.6	5.8	.00	10.3	.168	212	44	2	2	2	0
Moren, L.	ME	TCBA	3.0	3.42	2.06	37.0	9.6	6.8	2.6	4.8	.10	26.8	.205	1147	299	1	9	7	0
Higginbotham, I.	ME	TCBA	1.1	3.09	2.09	37.4	10.4	7.2	2.8	5.2	.09	9.2	.216	411	114	1	4	0	0
Adams, B.	ME	TCBA	2.9	3.43	2.31	36.8	9.0	6.5	2.2	6.0	.13	9.4	.198	557	137	2	4	3	0
Scott, J.	ME	TCBA	2.4	3.87	2.65	38.9	11.7	7.5	3.8	4.8	.00	7.5	.225	1057	318	2	11	4	0
Schlitzer, B.	ME	TCBA	2.5	5.19	3.75	40.8	13.3	9.4	3.4	3.7	.00	-9.2	.263	456	149	3	6	3	1
Wilson, P.	ME	TCBA	4.7	6.67	3.89	43.0	15.3	10.4	4.6	4.8	.22	-8.6	.281	387	138	0	3	0	0
Keefer, A.	ME	TCBA	.1	6.90	4.24	43.3	16.7	12.5	4.0	2.2	.00	-10.8	.323	358	138	0	2	0	0
McIntire, H.	ME	TCBA	3.4	5.79	4.42	42.1	14.9	10.3	3.9	5.2	.05	-32.8	.284	922	326	0	16	4	0
Steele, E.	ME	TCBA	2.4	6.28	4.52	41.8	14.8	12.1	2.6	6.7	.00	-12.7	.323	333	118	0	1	0	0
Sitton, C.	ME	TCBA	.2	7.88	4.53	43.8	16.6	12.0	4.3	2.8	.20	-8.1	.316	222	84	0	1	1	0
Mexicali Mallards			2.6	4.54	3.05	39.4	12.1	8.5	3.2	4.8	.06	-18.8	.246	6066	1867	11	59	24	1

29 Players	Tm	Lg	AVG	G	AB	R	H	2B	3B	HR	TB	RBI	SO	BB	ASB	SB	CS	SBP	GDP
Dougherty, P.	ME	TCBA	.303	128	465	60	141	36	9	0	195	56	43	30	48	36	12	75.0	4
Suggs, G.	ME	TCBA	.273	22	11	4	3	2	0	0	5	2	1	1	0	0	0	-	1
Lelivelt, J.	ME	TCBA	.272	98	305	28	83	11	5	0	104	28	31	16	13	8	5	61.5	4
Sweeney, J.	ME	TCBA	.262	65	191	18	50	7	0	0	57	18	16	13	1	1	0	100.0	5
Keefer, A.	ME	TCBA	.252	91	250	21	63	7	3	2	82	19	52	11	0	0	0	-	11
McCormick, M.	ME	TCBA	.246	114	382	41	94	28	5	3	141	54	42	46	5	2	3	40.0	3
Tannehill, L.	ME	TCBA	.223	138	476	36	106	20	2	0	130	40	93	30	12	8	4	66.7	10
Chance, F.	ME	TCBA	.219	93	319	47	70	14	1	0	86	21	45	37	39	36	3	92.3	2
Milan, C.	ME	TCBA	.211	89	218	23	46	6	1	0	54	25	23	27	9	4	5	44.4	2
Barry, J.	ME	TCBA	.206	125	446	46	92	7	0	0	99	29	68	40	20	11	9	55.0	3
Smith, H.	ME	TCBA	.200	13	45	6	9	1	0	0	10	1	8	5	3	2	1	66.7	2
Wilson, P.	ME	TCBA	.200	16	30	4	6	0	1	0	8	3	8	1	0	0	0	-	0
Schmidt, B.	ME	TCBA	.183	97	327	23	60	9	2	0	73	23	45	12	13	9	4	69.2	6
Yerkes, S.	ME	TCBA	.182	7	22	0	4	0	0	0	4	0	5	0	0	0	0	-	0
McAleese, J.	ME	TCBA	.178	32	73	7	13	2	0	0	15	8	9	10	9	8	1	88.9	0
Knight, J.	ME	TCBA	.176	111	387	39	68	6	9	0	92	31	55	35	23	17	6	73.9	4
Higginbotham, I.	ME	TCBA	.174	36	23	1	4	0	0	0	4	1	3	0	0	0	0	-	0
Shafer, T.	ME	TCBA	.164	36	61	4	10	1	0	0	11	4	10	6	5	5	0	100.0	0
Coffey, J.	ME	TCBA	.154	11	13	2	2	0	0	0	2	0	1	2	0	0	0	-	0
Kustus, J.	ME	TCBA	.152	42	105	9	16	6	0	1	25	9	10	5	9	8	1	88.9	3
Howard, D.	ME	TCBA	.152	71	204	21	31	6	2	0	41	10	33	21	10	7	3	70.0	3
McIntire, H.	ME	TCBA	.147	28	68	7	10	5	0	0	15	4	10	2	0	0	0	-	3
Williams, J.	ME	TCBA	.144	133	402	31	58	4	5	0	72	29	62	52	9	5	4	55.6	6
Steele, E.	ME	TCBA	.143	18	21	2	3	1	0	0	4	0	2	2	0	0	0	-	0
Moren, L.	ME	TCBA	.132	36	91	1	12	3	0	0	15	5	15	5	0	0	0	-	0
Schlitzer, B.	ME	TCBA	.125	21	32	1	4	2	1	0	8	3	7	1	0	0	0	-	0
Scott, J.	ME	TCBA	.118	32	76	6	9	1	0	0	10	6	11	6	0	0	0	-	2
Adams, B.	ME	TCBA	.068	24	44	2	3	0	0	0	3	0	10	3	0	0	0	-	2
Sitton, C.	ME	TCBA	.000	13	12	0	0	0	0	0	0	1	3	2	0	0	0	-	1
Mexicali Mallards			.210	1740	5099	490	1070	185	46	6	1365	430	721	421	228	167	61	73.2	77

PITTSBURGH

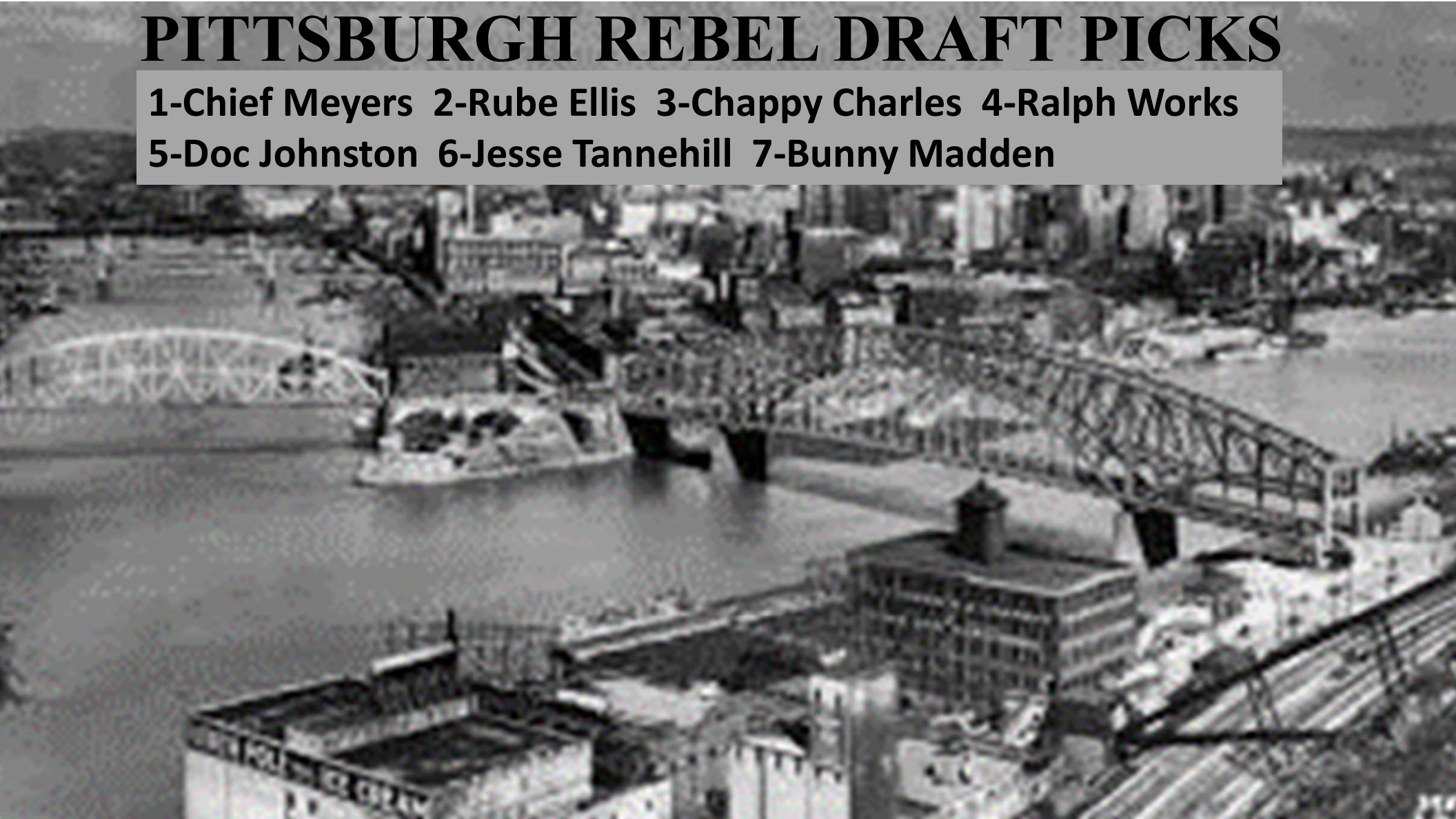


1914-1925

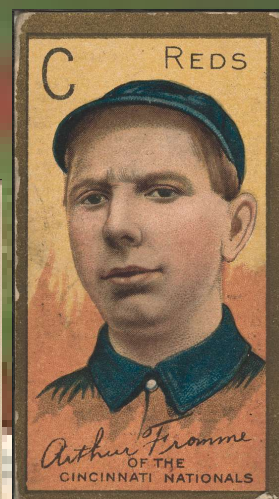
REBELS

PITTSBURGH REBEL DRAFT PICKS

**1-Chief Meyers 2-Rube Ellis 3-Chappy Charles 4-Ralph Works
5-Doc Johnston 6-Jesse Tannehill 7-Bunny Madden**



PITTSBURGH REBELS STARTING LINEUP 1910 OPENING DAY



- 1-Bobby Byrne, 3B
- 2-Beals Becker, LF
- 3-Tris Speaker, CF
- 4-Joe Tinker, SS
- 5-Rube Ellis, RF
- 6-George Stovall, 1B
- 7-Chappy Charles, 2B
- 8-Ira Thomas, C
- 9-Art Fromme, P

10 Pitchers	Tm	Lg	W	L	PCT	SV	ERA	G	GS	CG	SHO	QS	IP	H	R	ER	HR	SO	BB
Kroh, R.	SO	TCBA	1	0	1.000	0	.00	1	0	0	0	0	4.0	1	0	0	0	1	2
McQuillan, G.	PR	TCBA	23	8	.742	2	1.80	36	31	26	8	23	280.0	205	68	56	2	139	53
Corridon, F.	PR	TCBA	10	6	.625	1	2.15	28	22	11	2	13	188.2	164	63	45	2	91	52
Fromme, A.	PR	TCBA	21	13	.618	0	2.29	37	35	22	7	24	298.2	215	104	76	1	160	106
Waddell, R.	PR	TCBA	18	11	.621	0	2.80	32	32	20	4	19	253.2	214	95	79	4	164	68
Works, R.	PR	TCBA	2	5	.286	4	2.94	24	3	3	0	1	67.1	57	28	22	0	30	22
Wood, J.	PR	TCBA	13	8	.619	3	3.07	26	18	10	0	10	164.0	133	67	56	0	76	61
Hughes, L.	PR	TCBA	5	8	.385	0	4.24	20	11	9	1	7	102.0	127	57	48	2	50	27
Tannehill, J.	PR	TCBA	0	0	-	0	7.04	4	0	0	0	0	7.2	13	6	6	1	2	2
Newton, D.	PR	TCBA	0	2	.000	0	7.06	12	2	1	0	0	29.1	44	28	23	0	11	12
Pittsburgh Rebels			93	61	.604	10	2.65	220	154	102	22	97	1395.1	1173	516	411	12	724	405

10 Pitchers	Tm	Lg	SUP/9	R/9	ERA	BF/9	BR/9	H/9	BB/9	SO/9	HR/9	ERPT	OBA	BF	BR	IBB	HB	WP	BK
Kroh, R.	SO	TCBA	.0	.00	.00	29.3	6.8	2.3	4.5	2.3	.00	1.3	.100	13	3	0	0	0	0
McQuillan, G.	PR	TCBA	3.5	2.19	1.80	35.6	8.4	6.6	1.6	4.5	.06	35.1	.200	1108	261	3	6	2	0
Corridon, F.	PR	TCBA	3.8	3.01	2.15	37.9	10.6	7.8	2.4	4.3	.10	16.4	.228	794	222	2	8	6	0
Fromme, A.	PR	TCBA	5.5	3.13	2.29	37.2	9.9	6.5	3.1	4.8	.03	21.2	.199	1233	330	4	13	2	0
Waddell, R.	PR	TCBA	4.1	3.37	2.80	37.0	10.4	7.6	2.4	5.8	.14	3.6	.228	1042	293	0	11	2	0
Works, R.	PR	TCBA	1.3	3.74	2.94	37.8	10.7	7.6	2.8	4.0	.00	-.1	.227	283	80	1	2	3	0
Wood, J.	PR	TCBA	4.7	3.68	3.07	37.5	10.8	7.3	3.1	4.2	.00	-2.6	.219	684	197	4	7	4	0
Hughes, L.	PR	TCBA	4.0	5.03	4.24	40.1	13.4	11.2	2.0	4.4	.18	-14.8	.303	454	152	4	2	2	0
Tannehill, J.	PR	TCBA	.0	7.04	7.04	43.4	17.6	15.3	2.3	2.3	1.17	-3.5	.371	37	15	0	0	1	0
Newton, D.	PR	TCBA	.9	8.59	7.06	45.4	17.8	13.5	3.4	3.4	.00	-13.5	.338	148	58	1	3	0	0
Pittsburgh Rebels			4.1	3.33	2.65	37.4	10.4	7.6	2.5	4.7	.08	43.2	.225	5796	1611	19	52	22	0

27 Players	Tm	Lg	AVG	G	AB	R	H	2B	3B	HR	TB	RBI	SO	BB	ASB	SB	CS	SBP	GDP
Speaker, T.	PR	TCBA	.307	141	557	92	171	26	8	12	249	96	32	35	59	44	15	74.6	6
Ellis, R.	PR	TCBA	.297	148	558	87	166	14	9	2	204	77	48	62	36	23	13	63.9	1
McMillan, T.	PR	TCBA	.289	69	225	30	65	15	0	0	80	22	31	23	14	13	1	92.9	4
Meyers, C.	PR	TCBA	.271	82	251	26	68	17	4	0	93	34	20	24	3	2	1	66.7	9
Murphy, D.	PR	TCBA	.270	114	470	73	127	18	10	4	177	51	33	24	23	19	4	82.6	2
Tinker, J.	PR	TCBA	.261	129	517	71	135	28	12	4	199	79	34	19	50	35	15	70.0	5
Stovall, G.	PR	TCBA	.244	149	581	69	142	22	3	1	173	72	78	19	33	26	7	78.8	11
Flanagan, B.	PR	TCBA	.237	36	93	7	22	3	2	2	35	13	16	6	0	0	0	-	3
Byrne, B.	PR	TCBA	.236	150	585	107	138	20	8	0	174	37	85	76	52	38	14	73.1	8
Charles, C.	PR	TCBA	.232	113	362	41	84	12	1	0	98	42	62	40	16	12	4	75.0	4
Becker, B.	SO	TCBA	.227	24	97	19	22	4	0	0	26	4	14	9	6	5	1	83.3	1
Thomas, I.	PR	TCBA	.215	90	289	27	62	11	1	0	75	18	40	18	3	3	0	100.0	2
Fromme, A.	PR	TCBA	.194	37	108	13	21	4	1	0	27	13	19	5	0	0	0	-	1
Ferris, H.	PR	TCBA	.191	35	89	6	17	2	1	0	21	8	9	4	4	2	2	50.0	3
Blankenship, C.	PR	TCBA	.159	26	44	2	7	0	0	0	7	6	7	0	2	2	0	100.0	1
Waddell, R.	PR	TCBA	.120	32	83	3	10	0	0	0	10	5	10	7	0	0	0	-	3
Corridon, F.	PR	TCBA	.117	28	60	2	7	0	0	0	7	9	19	5	0	0	0	-	2
Tannehill, J.	PR	TCBA	.107	17	28	0	3	0	0	0	3	2	1	5	0	0	0	-	1
Hughes, L.	PR	TCBA	.088	20	34	0	3	2	0	0	5	4	9	2	0	0	0	-	1
Johnston, D.	PR	TCBA	.077	6	13	0	1	0	0	0	1	0	1	0	0	0	0	-	0
McQuillan, G.	PR	TCBA	.074	36	95	5	7	0	0	0	7	3	18	3	0	0	0	-	2
Wood, J.	PR	TCBA	.071	26	56	3	4	0	0	0	4	5	8	3	0	0	0	-	2
Works, R.	PR	TCBA	.067	24	15	1	1	0	0	0	1	1	3	0	0	0	0	-	0
Madden, B.	PR	TCBA	.000	4	8	0	0	0	0	0	0	0	0	0	0	0	0	-	1
Newton, D.	PR	TCBA	.000	12	6	0	0	0	0	0	0	1	2	1	0	0	0	-	0
Abbatichio, E.	SO	TCBA	.000	2	1	0	0	0	0	0	0	0	0	1	0	0	0	-	0
Kroh, R.	SO	TCBA	.000	1	1	0	0	0	0	0	0	0	0	0	0	0	0	-	0
Pittsburgh Rebels			.246	1551	5226	684	1283	198	60	25	1676	602	599	391	301	224	77	74.4	73



27 Players	Tm	Lg	AVG	OBP	SLG	OPS	ISO	SECA	TA	RCON	RC	RC/G	PA	IBB	HBP	SH	SF
Speaker, T.	PR	TCBA	.307	.347	.447	.794	.140	.255	.818	24.2	89.3	5.7	615	10	5	7	11
Ellis, R.	PR	TCBA	.297	.363	.366	.729	.068	.197	.717	10.3	81.2	5.2	636	3	2	2	11
McMillan, T.	PR	TCBA	.289	.353	.356	.709	.067	.222	.703	5.9	31.2	4.9	254	1	0	5	1
Meyers, C.	PR	TCBA	.271	.344	.371	.714	.100	.199	.648	3.5	32.1	4.4	286	1	6	1	4
Murphy, D.	PR	TCBA	.270	.308	.377	.685	.106	.189	.639	.4	58.2	4.3	512	1	3	12	3
Tinker, J.	PR	TCBA	.261	.285	.385	.670	.124	.199	.632	-5.3	56.1	3.6	553	3	1	9	6
Stovall, G.	PR	TCBA	.244	.268	.298	.566	.053	.119	.481	-23.8	46.6	2.7	612	2	2	4	6
Flanagan, B.	PR	TCBA	.237	.277	.376	.654	.140	.204	.554	-1.6	9.3	3.3	102	0	0	1	2
Byrne, B.	PR	TCBA	.236	.338	.297	.635	.062	.232	.646	-4.0	67.5	3.8	692	0	15	14	2
Charles, C.	PR	TCBA	.232	.315	.271	.586	.039	.171	.542	-10.2	35.3	3.2	421	2	5	12	2
Becker, B.	SO	TCBA	.227	.290	.268	.558	.041	.175	.519	-3.4	8.8	2.9	112	0	0	5	1
Thomas, I.	PR	TCBA	.215	.276	.260	.536	.045	.118	.450	-14.8	23.4	2.6	328	0	7	13	1
Fromme, A.	PR	TCBA	.194	.226	.250	.476	.056	.102	.364	-8.5	6.8	1.9	122	0	0	7	2
Ferris, H.	PR	TCBA	.191	.226	.236	.462	.045	.090	.351	-8.2	4.0	1.4	95	1	0	2	0
Blankenship, C.	PR	TCBA	.159	.178	.159	.337	.000	.045	.263	-5.1	1.5	1.0	49	0	1	4	0
Waddell, R.	PR	TCBA	.120	.187	.120	.307	.000	.084	.224	-11.3	2.3	.7	98	0	0	7	1
Corridon, F.	PR	TCBA	.117	.179	.117	.296	.000	.083	.218	-8.4	1.7	.7	73	0	0	6	2
Tannehill, J.	PR	TCBA	.107	.286	.107	.393	.000	.179	.385	-2.6	1.2	1.3	35	0	2	0	0
Hughes, L.	PR	TCBA	.088	.135	.147	.282	.059	.118	.219	-5.0	.7	.5	37	0	0	0	1
Johnston, D.	PR	TCBA	.077	.077	.077	.154	.000	.000	.083	-2.5	.1	.2	13	0	0	0	0
McQuillan, G.	PR	TCBA	.074	.110	.074	.184	.000	.032	.122	-17.5	1.0	.3	105	0	1	5	1
Wood, J.	PR	TCBA	.071	.145	.071	.217	.000	.054	.167	-9.5	.8	.4	65	0	2	3	1
Works, R.	PR	TCBA	.067	.067	.067	.133	.000	.000	.071	-3.0	.1	.2	17	0	0	2	0
Madden, B.	PR	TCBA	.000	.000	.000	.000	.000	.000	.000	-2.0	-0	-0	8	0	0	0	0
Newton, D.	PR	TCBA	.000	.143	.000	.143	.000	.167	.167	-1.2	.0	.2	7	0	0	0	0
Abbatichio, E.	SO	TCBA	.000	.500	.000	.500	.000	1.000	1.000	.1	.1	3.5	2	0	0	0	0
Kroh, R.	SO	TCBA	.000	.000	.000	.000	.000	.000	.000	-.3	.0	.0	1	0	0	0	0
Pittsburgh Rebels			.246	.301	.321	.622	.075	.178	.572	-104.0	537.5	3.4	5850	24	52	121	58

MIMOSA

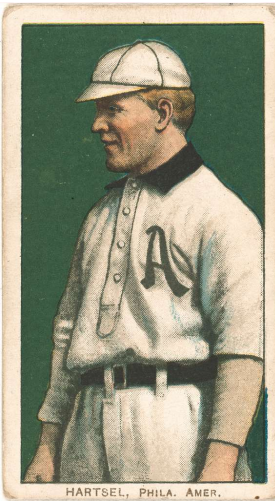




Mimosa Mirthmakers Draft Picks

1-Dots Miller 2-Cliff Curtiss 4-Harry Suter 5-Bob Rhoads
6-Sam Fletcher 7-Fred Winchell 8-Harry Bemis

Mimosa Mirthmaker Starting Lineup for Opening Day 1910



HARTSEL, PHILA. AMER.



SCHAEFER, DETROIT



EGAN OF THE CINCINNATI NATIONALS



Gessler, Washington Amer.



REULBACH, CHICAGO NAT'L



F. CLARKE, PITTSBURGH



MILLER-PITTSBURGH-NAT.



HOBBLITZELL OF THE CINCINNATI NATIONALS



STEPHENS, ST. LOUIS AMER.

- 1-Fred Clarke, RF
- 2-Topsy Hartsel, LF
- 3-Dick Hoblitzell, 1B
- 4-Dots Miller, 2B
- 5-Doc Gessler, CF
- 6-Dick Egan, SS
- 7-Germany Schaefer, 3B
- 8-Jim Stephens, C
- 9-Ed Reulbach, P

18 Pitchers	Tm	Lg	W	L	PCT	SV	ERA	G	GS	CG	SHO	QS	IP	H	R	ER	HR	SO	BB
Fletcher, S.	MI	TCBA	0	0	-	0	.00	6	0	0	0	0	6.2	3	0	0	0	4	4
Fraser, C.	MI	TCBA	1	0	1.000	0	1.50	4	0	0	0	0	6.0	2	1	1	0	2	1
Powell, J.	MI	TCBA	18	13	.581	0	1.60	35	33	15	6	22	264.1	206	79	47	1	82	67
Leever, S.	MI	TCBA	9	3	.750	1	1.67	26	6	4	2	5	80.2	62	24	15	0	22	19
Reulbach, E.	MI	TCBA	21	11	.656	1	1.89	37	35	22	4	27	291.0	203	86	61	2	140	83
Chappelle, B.	MI	TCBA	3	3	.500	0	2.02	17	3	2	2	2	40.0	30	16	9	0	7	14
Richie, L.	MI	TCBA	10	9	.526	3	2.77	38	20	8	2	10	175.1	158	81	54	1	58	65
Curtis, C.	MI	TCBA	4	8	.333	1	3.02	18	12	2	0	8	86.1	65	43	29	0	17	33
Smith, L.	MI	TCBA	0	1	.000	0	3.18	7	0	0	0	0	11.1	16	6	4	0	4	4
Suter, R.	MI	TCBA	4	9	.308	6	3.40	35	9	2	0	5	98.0	98	46	37	0	71	22
Altrock, N.	MI	TCBA	0	0	-	0	3.44	17	0	0	0	0	18.1	26	12	7	0	6	4
Dygert, J.	MI	TCBA	6	10	.375	1	3.76	33	18	6	1	8	141.1	141	84	59	1	102	76
Bushelman, J.	MI	TCBA	0	0	-	0	4.15	4	1	0	0	0	8.2	11	6	4	0	12	7
Chech, C.	MI	TCBA	2	3	.400	0	4.22	17	7	2	0	3	64.0	72	39	30	4	20	27
Rhoads, B.	MI	TCBA	3	3	.500	0	4.29	15	10	2	1	4	63.0	65	34	30	0	22	31
Carroll, D.	MI	TCBA	0	0	-	0	4.91	2	0	0	0	0	3.2	6	2	2	0	1	0
Durham, B.	MI	TCBA	0	0	-	0	7.00	8	0	0	0	0	9.0	11	9	7	1	1	9
Moriarty, B.	MI	TCBA	0	0	-	0	9.00	1	0	0	0	0	2.0	3	2	2	0	0	1
Mimosa Mirthmakers			81	73	.526	13	2.62	320	154	65	18	94	1369.2	1178	570	398	10	571	467
18 Pitchers	Tm	Lg	SUP/9	R/9	ERA	BF/9	BR/9	H/9	BB/9	SO/9	HR/9	ERPT	OBA	BF	BR	IBB	HB	WP	BK
Fletcher, S.	MI	TCBA	.0	.00	.00	36.5	9.4	4.0	5.4	5.4	.00	2.2	.143	27	7	0	0	0	0
Fraser, C.	MI	TCBA	.0	1.50	1.50	31.5	4.5	3.0	1.5	3.0	.00	1.0	.100	21	3	0	0	0	0
Powell, J.	MI	TCBA	4.8	2.69	1.60	36.7	9.6	7.0	2.2	2.8	.03	39.0	.210	1078	281	3	11	3	0
Leever, S.	MI	TCBA	4.2	2.68	1.67	35.5	8.8	6.9	1.9	2.5	.00	11.3	.214	318	79	2	0	0	0
Reulbach, E.	MI	TCBA	4.0	2.66	1.89	36.1	9.0	6.3	2.4	4.3	.06	33.7	.196	1166	292	6	12	1	0
Chappelle, B.	MI	TCBA	1.4	3.60	2.02	37.4	10.3	6.8	3.1	1.6	.00	4.0	.208	166	46	0	2	0	0
Richie, L.	MI	TCBA	3.0	4.16	2.77	39.0	11.9	8.1	3.2	3.0	.05	3.1	.239	760	231	3	11	2	0
Curtis, C.	MI	TCBA	2.4	4.48	3.02	38.4	10.6	6.8	3.4	1.8	.00	-.9	.202	368	102	0	4	3	0
Smith, L.	MI	TCBA	.0	4.76	3.18	44.5	15.9	12.7	3.2	3.2	.00	-.3	.314	56	20	0	0	0	0
Suter, R.	MI	TCBA	1.8	4.22	3.40	37.3	11.0	9.0	2.0	6.5	.00	-5.1	.266	406	120	0	0	3	0
Altrock, N.	MI	TCBA	.0	5.89	3.44	40.3	15.2	12.8	1.5	2.9	.00	-1.0	.342	82	31	1	2	0	0
Dygert, J.	MI	TCBA	2.9	5.35	3.76	40.2	14.1	9.0	4.7	6.5	.06	-13.0	.262	632	221	2	6	2	1
Bushelman, J.	MI	TCBA	.0	6.23	4.15	47.8	18.7	11.4	7.3	12.5	.00	-1.2	.289	46	18	0	0	0	0
Chech, C.	MI	TCBA	1.8	5.48	4.22	41.3	14.2	10.1	3.7	2.8	.56	-9.2	.285	294	101	1	3	0	0
Rhoads, B.	MI	TCBA	2.4	4.86	4.29	40.4	13.9	9.3	4.1	3.1	.00	-9.5	.270	283	97	2	3	2	1
Carroll, D.	MI	TCBA	.0	4.91	4.91	41.7	14.7	14.7	.0	2.5	.00	-.8	.353	17	6	0	0	0	0
Durham, B.	MI	TCBA	.0	9.00	7.00	46.0	18.0	11.0	7.0	1.0	1.00	-4.1	.306	46	18	2	0	0	0
Moriarty, B.	MI	TCBA	.0	9.00	9.00	45.0	18.0	13.5	4.5	.0	.00	-1.3	.333	10	4	0	0	0	0
Mimosa Mirthmakers			3.2	3.75	2.62	38.0	11.0	7.7	2.9	3.8	.07	47.8	.231	5776	1677	22	54	16	2

31 Players	Tm	Lg	AVG	G	AB	R	H	2B	3B	HR	TB	RBI	SO	BB	ASB	SB	CS	SBP	GDP
Dygart, J.	MI	TCBA	.359	33	39	4	14	2	0	0	16	2	4	0	0	0	0	-	0
Hoblitzell, D.	MI	TCBA	.336	139	533	82	179	22	9	9	246	83	36	34	17	10	7	58.8	6
Lapp, J.	MI	TCBA	.333	57	60	4	20	5	1	0	27	9	4	5	0	0	0	-	1
Beaumont, G.	MI	TCBA	.294	125	385	46	113	19	5	0	142	57	37	38	11	9	2	81.8	5
Gessler, D.	MI	TCBA	.281	113	413	60	116	21	3	0	143	35	45	39	16	10	6	62.5	4
Egan, D.	MI	TCBA	.279	128	459	67	128	8	1	2	144	53	42	57	38	28	10	73.7	12
Clarke, F.	MI	TCBA	.278	151	600	99	167	15	12	2	212	50	67	80	27	22	5	81.5	9
Schaefer, G.	MI	TCBA	.260	95	281	30	73	14	0	0	87	50	36	20	7	4	3	57.1	6
Miller, D.	MI	TCBA	.247	143	546	61	135	21	14	1	187	72	59	29	14	8	6	57.1	9
O'Leary, C.	MI	TCBA	.235	51	115	11	27	8	0	0	35	7	11	2	4	4	0	100.0	2
Powell, J.	MI	TCBA	.228	35	92	7	21	1	1	0	24	8	18	3	0	0	0	-	0
Hartsel, T.	MI	TCBA	.228	88	246	33	56	0	4	1	67	19	21	26	6	6	0	100.0	4
Smith, L.	MI	TCBA	.214	108	365	23	78	10	5	1	101	36	75	31	0	0	0	-	12
Reulbach, E.	MI	TCBA	.206	37	97	6	20	4	1	0	26	9	10	1	0	0	0	-	2
Rossman, C.	MI	TCBA	.198	80	207	17	41	9	0	0	50	9	27	12	10	8	2	80.0	3
Stephens, J.	MI	TCBA	.194	121	403	34	78	8	0	2	92	28	62	21	4	2	2	50.0	17
Curtis, C.	MI	TCBA	.174	18	23	2	4	0	0	0	4	2	4	0	0	0	0	-	0
Suter, R.	MI	TCBA	.167	35	24	2	4	0	0	0	4	0	2	1	0	0	0	-	1
Rhoads, B.	MI	TCBA	.167	15	18	0	3	1	0	0	4	0	3	1	0	0	0	-	1
Moriarty, B.	MI	TCBA	.158	51	114	9	18	3	0	0	21	13	18	1	5	4	1	80.0	2
Leever, S.	MI	TCBA	.158	26	19	3	3	0	0	0	3	2	3	3	0	0	0	-	0
Bemis, H.	MI	TCBA	.137	44	117	14	16	1	1	0	19	6	12	2	0	0	0	-	1
Richie, L.	MI	TCBA	.132	38	53	2	7	0	0	0	7	2	4	0	0	0	0	-	1
Chech, C.	MI	TCBA	.059	17	17	0	1	0	0	0	1	0	3	1	0	0	0	-	1
Chappelle, B.	MI	TCBA	.000	17	8	0	0	0	0	0	0	0	2	0	0	0	0	-	0
Durham, B.	MI	TCBA	.000	8	2	0	0	0	0	0	0	0	0	0	0	0	0	-	0
Altrock, N.	MI	TCBA	.000	17	1	0	0	0	0	0	0	0	0	0	0	0	0	-	0
Bushelman, J.	MI	TCBA	.000	4	1	0	0	0	0	0	0	0	0	0	0	0	0	-	0
Fraser, C.	MI	TCBA	.000	4	1	0	0	0	0	0	0	0	1	0	0	0	0	-	0
Carroll, D.	MI	TCBA	-	2	0	0	0	0	0	0	0	0	0	0	0	0	0	-	0
Fletcher, S.	MI	TCBA	-	6	0	0	0	0	0	0	0	0	0	0	0	0	0	-	0
Mimosa Mirthmakers			.252	1806	5239	616	1322	172	57	18	1662	552	606	407	159	115	44	72.3	99

31 Players	Tm	Lg	AVG	OBP	SLG	OPS	ISO	SECA	TA	RCON	RC	RC/G	PA	IBB	HBP	SH	SF
Dygart, J.	MI	TCBA	.359	.350	.410	.760	.051	.051	.640	.9	5.9	5.3	44	0	0	4	1
Hoblitzell, D.	MI	TCBA	.336	.374	.462	.835	.126	.195	.798	25.8	93.1	6.6	584	1	3	6	8
Lapp, J.	MI	TCBA	.333	.388	.450	.838	.117	.200	.805	3.4	10.7	6.9	67	2	1	0	1
Beaumont, G.	MI	TCBA	.294	.355	.369	.724	.075	.192	.681	7.6	54.2	5.0	435	0	1	7	4
Gessler, D.	MI	TCBA	.281	.363	.346	.709	.065	.169	.674	5.2	55.8	4.8	472	1	15	4	1
Egan, D.	MI	TCBA	.279	.360	.314	.674	.035	.198	.660	3.8	56.7	4.2	531	0	4	6	5
Clarke, F.	MI	TCBA	.278	.363	.353	.716	.075	.237	.707	12.9	84.7	5.0	692	1	2	5	4
Schaefer, G.	MI	TCBA	.260	.306	.310	.616	.050	.125	.516	-7.3	27.0	3.2	311	1	1	4	5
Miller, D.	MI	TCBA	.247	.285	.342	.628	.095	.152	.528	-16.0	52.1	3.2	585	2	1	7	2
O'Leary, C.	MI	TCBA	.235	.248	.304	.552	.070	.122	.456	-5.0	8.7	2.6	117	0	0	0	0
Powell, J.	MI	TCBA	.228	.253	.261	.514	.033	.065	.380	-6.2	6.9	2.3	105	0	0	10	0
Hartsel, T.	MI	TCBA	.228	.299	.272	.572	.045	.175	.510	-8.2	22.4	3.0	279	1	0	5	2
Smith, L.	MI	TCBA	.214	.279	.277	.556	.063	.148	.452	-17.5	27.8	2.5	403	0	3	2	2
Reulbach, E.	MI	TCBA	.206	.214	.268	.482	.062	.072	.342	-7.8	5.5	1.7	108	0	0	10	0
Rossmann, C.	MI	TCBA	.198	.249	.242	.490	.043	.130	.421	-13.8	13.4	2.0	226	0	2	5	0
Stephens, J.	MI	TCBA	.194	.249	.228	.477	.035	.087	.360	-31.5	21.0	1.6	437	0	9	3	1
Curtis, C.	MI	TCBA	.174	.208	.174	.382	.000	.000	.263	-2.6	1.0	1.3	26	0	1	2	0
Suter, R.	MI	TCBA	.167	.200	.167	.367	.000	.042	.238	-2.8	.7	.9	26	0	0	1	0
Rhoads, B.	MI	TCBA	.167	.211	.222	.433	.056	.111	.313	-1.7	.7	1.1	20	0	0	1	0
Moriarty, B.	MI	TCBA	.158	.162	.184	.347	.026	.061	.263	-13.8	3.4	.9	121	1	0	3	2
Leever, S.	MI	TCBA	.158	.304	.158	.462	.000	.158	.438	-1.3	1.5	2.1	26	0	1	3	0
Bemis, H.	MI	TCBA	.137	.165	.162	.328	.026	.043	.225	-15.7	3.3	.8	123	0	2	2	0
Richie, L.	MI	TCBA	.132	.130	.132	.262	.000	.000	.149	-8.3	1.0	.5	58	0	0	4	1
Chech, C.	MI	TCBA	.059	.111	.059	.170	.000	.059	.118	-3.2	.2	.2	22	0	0	4	0
Chappelle, B.	MI	TCBA	.000	.000	.000	.000	.000	.000	.000	-2.0	.0	.0	9	0	0	1	0
Durham, B.	MI	TCBA	.000	.000	.000	.000	.000	.000	.000	-.5	.0	.0	2	0	0	0	0
Altrock, N.	MI	TCBA	.000	.000	.000	.000	.000	.000	.000	-.3	.0	.0	1	0	0	0	0
Bushelman, J.	MI	TCBA	.000	.000	.000	.000	.000	.000	.000	-.3	.0	.0	1	0	0	0	0
Fraser, C.	MI	TCBA	.000	.000	.000	.000	.000	.000	.000	-.3	.0	.0	1	0	0	0	0
Carroll, D.	MI	TCBA	-	-	-	-	-	-	-	.0	-	-	0	0	0	0	0
Fletcher, S.	MI	TCBA	-	-	-	-	-	-	-	.0	-	-	0	0	0	0	0
Mimosa Mirthmakers			.252	.310	.317	.627	.065	.156	.549	-106.2	534.3	3.4	5832	10	46	99	39



WELCOME TO
WAUKESHA

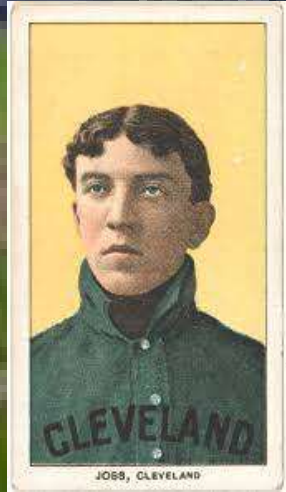
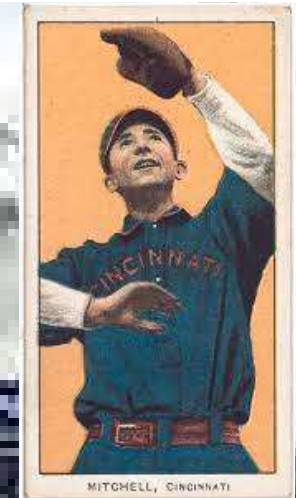
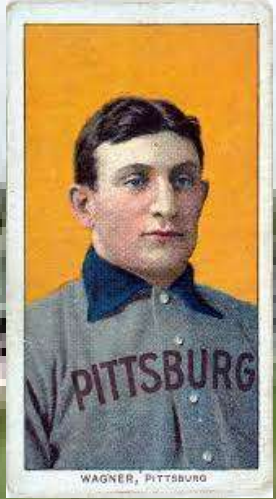
FREEMEN

1-Jimmy Austin 2-Ted Easterly 3-Larry Pape 4-Butch Schmidt
5-Willis Cole 6-Jerry Upp 7-Al Klawitter 8-Ray Brown

Waukesha Freeman Draft Picks



Waukesha 1910 Opening Day Lineup



- 1-Honus Wagner, SS
- 2-Mike Mitchell, RF
- 3-Al Burch, CF
- 4-Jake Stahl, 1B
- 5-Jimmy Austin, 3B
- 6-Ted Easterly, C
- 7-Dave Altizer, LF
- 8-Miller Huggins, 2B
- 9-Addie Joss, P

14 Pitchers	Tm	Lg	W	L	PCT	SV	ERA	G	GS	CG	SHO	QS	IP	H	R	ER	HR	SO	BB
Burchell, F.	WA	TCBA	1	1	.500	0	.95	15	2	2	1	2	38.0	28	5	4	0	7	9
Upp, J.	WA	TCBA	2	2	.500	3	1.71	21	1	0	0	0	31.2	34	12	6	0	12	15
Joss, A.	WA	TCBA	19	9	.679	2	1.92	35	29	23	4	23	262.2	190	78	56	1	80	44
Leifield, L.	WA	TCBA	12	12	.500	0	2.05	30	26	12	3	17	224.1	189	73	51	1	66	54
Schmidt, B.	WA	TCBA	1	0	1.000	0	2.25	2	0	0	0	0	4.0	3	2	1	0	0	2
Brown, R.	WA	TCBA	1	2	.333	1	2.35	6	1	1	0	0	15.1	19	9	4	0	9	7
Pape, L.	WA	TCBA	5	4	.556	0	2.63	15	5	4	0	2	61.2	52	26	18	0	15	24
Campbell, B.	WA	TCBA	7	11	.389	1	2.84	25	22	7	2	15	174.1	184	76	55	0	54	36
Klawitter, A.	WA	TCBA	1	0	1.000	0	3.10	8	2	1	1	1	29.0	34	13	10	2	9	9
Warhop, J.	WA	TCBA	10	18	.357	0	3.26	34	28	16	1	14	240.0	227	114	87	3	82	71
Reisling, D.	WA	TCBA	3	2	.600	2	3.40	12	3	2	1	2	39.2	42	17	15	0	11	12
Dinneen, B.	WA	TCBA	5	3	.625	0	4.12	12	10	4	0	6	78.2	87	42	36	6	31	31
Ryan, J.	WA	TCBA	4	5	.444	0	4.42	16	11	3	0	5	77.1	92	46	38	2	34	36
Ferguson, G.	WA	TCBA	4	10	.286	0	6.33	24	14	3	0	2	112.1	166	110	79	1	67	43
Waukesha Freeman			75	79	.487	9	2.98	255	154	78	13	89	1389.0	1347	623	460	16	477	393

14 Pitchers	Tm	Lg	SUP/9	R/9	ERA	BF/9	BR/9	H/9	BB/9	SO/9	HR/9	ERPT	OBA	BF	BR	IBB	HB	WP	BK
Burchell, F.	WA	TCBA	1.4	1.18	.95	35.8	8.8	6.6	1.7	1.7	.00	8.4	.206	151	37	2	2	0	0
Upp, J.	WA	TCBA	.6	3.41	1.71	40.9	13.6	9.7	4.0	3.4	.00	4.3	.268	144	48	1	0	0	0
Joss, A.	WA	TCBA	3.7	2.67	1.92	35.0	8.2	6.5	1.4	2.7	.03	29.5	.200	1022	239	3	8	6	0
Leifield, L.	WA	TCBA	3.4	2.93	2.05	37.0	9.9	7.6	2.1	2.6	.04	22.0	.225	922	248	2	7	0	0
Schmidt, B.	WA	TCBA	.0	4.50	2.25	40.5	13.5	6.8	4.5	.0	.00	.3	.200	18	6	0	1	0	0
Brown, R.	WA	TCBA	1.8	5.28	2.35	41.1	15.3	11.2	3.5	5.3	.00	1.0	.322	70	26	1	1	0	0
Pape, L.	WA	TCBA	3.4	3.79	2.63	38.4	10.9	7.6	3.1	2.2	.00	2.1	.228	263	75	3	2	2	0
Campbell, B.	WA	TCBA	3.5	3.92	2.84	38.6	12.1	9.5	1.9	2.8	.00	1.7	.271	748	235	0	15	1	0
Klawitter, A.	WA	TCBA	4.7	4.03	3.10	39.7	13.3	10.6	2.8	2.8	.62	-.6	.291	128	43	0	0	0	0
Warhop, J.	WA	TCBA	3.0	4.28	3.26	38.3	11.0	8.5	2.4	3.1	.11	-8.9	.250	1021	294	7	3	4	0
Reisling, D.	WA	TCBA	3.4	3.86	3.40	37.9	12.3	9.5	2.7	2.5	.00	-2.1	.282	167	54	0	0	0	0
Dinneen, B.	WA	TCBA	6.3	4.81	4.12	39.2	13.5	10.0	3.5	3.5	.69	-10.4	.287	343	118	0	0	1	1
Ryan, J.	WA	TCBA	3.7	5.35	4.42	41.7	15.2	10.7	4.1	4.0	.23	-12.8	.295	358	131	1	4	1	0
Ferguson, G.	WA	TCBA	4.6	8.81	6.33	44.1	16.8	13.3	3.3	5.4	.08	-42.4	.337	550	210	2	3	3	0
Waukesha Freeman			3.6	4.04	2.98	38.3	11.4	8.7	2.4	3.1	.10	-7.9	.253	5905	1764	22	46	18	1

31 Players	Tm	Lg	AVG	G	AB	R	H	2B	3B	HR	TB	RBI	SO	BB	ASB	SB	CS	SBP	GDP
Mitchell, M.	WA	TCBA	.316	137	534	96	169	19	19	3	235	77	60	73	76	57	19	75.0	1
Wagner, H.	WA	TCBA	.304	136	537	117	163	46	9	0	227	51	49	72	45	30	15	66.7	5
Easterly, T.	WA	TCBA	.295	89	251	37	74	20	8	0	110	36	30	16	6	5	1	83.3	3
Dinneen, B.	WA	TCBA	.276	12	29	7	8	1	0	0	9	3	4	2	0	0	0	-	0
Stahl, J.	WA	TCBA	.265	104	396	52	105	21	11	4	160	64	38	35	7	5	2	71.4	8
Altizer, D.	WA	TCBA	.262	82	260	22	68	2	2	0	74	21	35	20	32	22	10	68.8	3
Niles, H.	WA	TCBA	.259	90	347	36	90	10	5	0	110	57	51	25	25	22	3	88.0	4
Cole, W.	WA	TCBA	.252	43	119	20	30	7	1	0	39	6	16	7	3	2	1	66.7	4
O'Hara, B.	WA	TCBA	.240	54	183	34	44	5	2	0	53	13	23	19	20	15	5	75.0	4
Burch, A.	LT	TCBA	.226	60	235	30	53	5	0	1	61	24	26	28	20	16	4	80.0	3
Isbell, F.	WA	TCBA	.207	105	305	29	63	14	5	0	87	40	52	22	20	12	8	60.0	1
Huggins, M.	WA	TCBA	.201	100	309	35	62	4	2	0	70	20	48	44	18	13	5	72.2	5
Campbell, B.	WA	TCBA	.196	25	56	6	11	2	1	0	15	6	6	4	4	3	1	75.0	1
Mowrey, M.	WA	TCBA	.193	63	202	21	39	10	0	0	49	14	26	32	4	3	1	75.0	5
Sajdak, K.	WA	TCBA	.191	45	115	6	22	1	2	1	30	11	18	6	0	0	0	-	3
Austin, J.	WA	TCBA	.184	126	463	35	85	9	2	0	98	41	71	43	50	34	16	68.0	4
Reisling, D.	WA	TCBA	.182	12	11	0	2	1	0	0	3	0	1	2	0	0	0	-	0
Ferguson, G.	WA	TCBA	.167	24	36	2	6	1	0	0	7	4	4	4	0	0	0	-	1
Ryan, J.	WA	TCBA	.167	16	24	1	4	0	0	0	4	4	3	1	0	0	0	-	0
Warhop, J.	WA	TCBA	.143	34	84	3	12	1	2	0	17	4	16	1	0	0	0	-	2
Klawitter, A.	WA	TCBA	.143	8	7	2	1	0	0	0	1	1	0	2	0	0	0	-	0
Spencer, T.	WA	TCBA	.142	55	183	14	26	3	0	0	29	14	22	12	4	3	1	75.0	3
Joss, A.	WA	TCBA	.133	35	90	6	12	4	0	0	16	10	18	5	0	0	0	-	1
Needham, T.	WA	TCBA	.130	56	177	10	23	0	0	0	23	8	13	0	0	0	0	-	0
Upp, J.	WA	TCBA	.111	21	9	0	1	0	0	0	1	1	1	0	0	0	0	-	1
Killefer, R.	WA	TCBA	.108	39	111	6	12	0	1	0	14	7	25	15	5	3	2	60.0	2
Pape, L.	WA	TCBA	.100	15	20	1	2	0	0	0	2	1	2	0	0	0	0	-	0
Leifield, L.	WA	TCBA	.093	30	75	6	7	0	1	0	9	5	8	5	1	1	0	100.0	0
Burchell, F.	WA	TCBA	.000	15	11	0	0	0	0	0	0	0	1	0	0	0	0	-	0
Brown, R.	WA	TCBA	.000	6	3	1	0	0	0	0	0	0	0	0	0	0	0	-	0
Schmidt, B.	WA	TCBA	.000	2	1	0	0	0	0	0	0	0	0	0	0	0	0	-	0
Waukesha Freeman			.230	1639	5183	635	1194	186	73	9	1553	543	667	495	340	246	94	72.4	64

31 Players	Tm	Lg	AVG	OBP	SLG	OPS	ISO	SECA	TA	RCON	RC	RC/G	PA	IBB	HBP	SH	SF
Mitchell, M.	WA	TCBA	.316	.397	.440	.837	.124	.331	.953	36.9	104.6	7.2	617	1	2	3	5
Wagner, H.	WA	TCBA	.304	.384	.423	.807	.119	.281	.838	26.3	92.9	6.2	621	0	1	6	4
Easterly, T.	WA	TCBA	.295	.337	.438	.775	.143	.223	.735	7.9	38.7	5.4	280	0	2	7	4
Dinneen, B.	WA	TCBA	.276	.323	.310	.633	.034	.103	.524	-.6	3.2	3.8	33	0	0	2	0
Stahl, J.	WA	TCBA	.265	.342	.404	.746	.139	.235	.708	8.8	56.4	4.9	455	5	13	7	3
Altizer, D.	WA	TCBA	.262	.338	.285	.622	.023	.146	.620	-4.1	27.9	3.6	295	0	11	2	2
Niles, H.	WA	TCBA	.259	.326	.317	.643	.058	.184	.640	.4	41.9	4.0	402	0	12	13	5
Cole, W.	WA	TCBA	.252	.294	.328	.621	.076	.143	.511	-3.2	10.7	3.0	128	0	0	2	0
O'Hara, B.	WA	TCBA	.240	.322	.290	.612	.049	.208	.608	-2.9	18.5	3.3	206	1	3	1	0
Burch, A.	LT	TCBA	.226	.313	.260	.573	.034	.204	.566	-6.2	22.2	3.1	267	0	2	2	0
Isbell, F.	WA	TCBA	.207	.261	.285	.547	.079	.164	.486	-17.6	23.4	2.5	332	1	1	3	1
Huggins, M.	WA	TCBA	.201	.303	.227	.529	.026	.194	.502	-14.7	25.8	2.5	374	0	2	17	2
Campbell, B.	WA	TCBA	.196	.246	.268	.514	.071	.179	.468	-3.3	4.0	2.1	65	0	0	4	1
Mowrey, M.	WA	TCBA	.193	.302	.243	.545	.050	.218	.497	-8.6	17.3	2.6	247	0	0	12	1
Sajdak, K.	WA	TCBA	.191	.231	.261	.492	.070	.122	.375	-8.8	6.5	1.8	121	1	0	0	0
Austin, J.	WA	TCBA	.184	.252	.212	.464	.028	.160	.440	-36.4	27.6	1.8	521	6	0	13	2
Reisling, D.	WA	TCBA	.182	.308	.273	.580	.091	.273	.556	-.3	1.1	3.2	13	0	0	0	0
Ferguson, G.	WA	TCBA	.167	.244	.194	.438	.028	.139	.355	-3.1	1.9	1.6	42	0	0	1	1
Ryan, J.	WA	TCBA	.167	.200	.167	.367	.000	.042	.250	-2.8	.9	1.2	25	0	0	0	0
Warhop, J.	WA	TCBA	.143	.163	.202	.365	.060	.071	.257	-10.4	2.6	.9	90	0	1	4	0
Klawitter, A.	WA	TCBA	.143	.333	.143	.476	.000	.286	.500	-.4	.5	2.3	9	0	0	0	0
Spencer, T.	WA	TCBA	.142	.197	.158	.355	.016	.093	.280	-21.7	6.4	1.0	201	0	1	3	2
Joss, A.	WA	TCBA	.133	.175	.178	.353	.044	.100	.266	-11.0	3.2	1.0	100	0	0	3	2
Needham, T.	WA	TCBA	.130	.130	.130	.260	.000	.000	.149	-27.9	3.0	.5	177	0	0	0	0
Upp, J.	WA	TCBA	.111	.111	.111	.222	.000	.000	.111	-1.5	.0	.0	9	0	0	0	0
Killefer, R.	WA	TCBA	.108	.238	.126	.365	.018	.162	.350	-12.7	4.1	1.1	130	3	4	0	0
Pape, L.	WA	TCBA	.100	.100	.100	.200	.000	.000	.111	-3.6	.2	.3	21	0	0	1	0
Leifield, L.	WA	TCBA	.093	.159	.120	.279	.027	.107	.235	-10.9	2.1	.8	86	0	1	4	1
Burchell, F.	WA	TCBA	.000	.000	.000	.000	.000	.000	.000	-2.8	.0	.0	12	0	0	1	0
Brown, R.	WA	TCBA	.000	.000	.000	.000	.000	.000	.000	-.8	.0	.0	3	0	0	0	0
Schmidt, B.	WA	TCBA	.000	.000	.000	.000	.000	.000	.000	-.3	.0	.0	1	0	0	0	0
Waukesha Freeman			.230	.302	.300	.602	.069	.194	.567	-136.2	511.6	3.2	5883	18	56	111	36