

highlights

April 24 Long Tom Hughes throws the season's first no-hitter, walking two hitters



Buffalo Mules at South Starrucca Ainspans														
Team	1	2	3	4	5	6	7	8	9	R	H	E	LOB	DP
Buffalo Mules	0	0	0	0	0	0	0	0	0	0	0	1	2	1
South Starrucca Ainspans	4	0	0	2	0	0	1	0		7	5	0	6	0

Buffalo Mules (Game 12)																									
NAME	FT	AB	R	HR	BI	2B	3B	HR	TB	SO	BB	IBB	HBP	SH	SF	SB	CS	GDP	AVG	PO	A	E	DP	PB	
F. JONES, cf		4	0	0	0	0	0	0	0	0	0	0	0	0	0	0	0	0	.395	3	0	0	0		
J. DONAHUE, 1b		1	0	0	0	0	0	0	0	0	0	0	0	0	0	0	0	0	.297	0	0	0	0		
F. CRAWFORD, 3b		3	0	0	0	0	0	0	0	0	0	0	0	0	0	0	0	0	.188	0	1	0	0		
S. MAGEE, rf		2	0	0	0	0	0	0	0	1	1	0	0	0	0	0	0	0	.379	0	0	0	0		
G. DAVIS, ss		3	0	0	0	0	0	0	0	1	0	0	0	0	0	0	0	0	.279	2	4	0	1		
G. MORIARTY, 3b-1b		2	0	0	0	0	0	0	0	1	1	0	0	0	0	0	0	0	.154	10	1	0	1		
F. PAYNE, c		0	0	0	0	0	0	0	0	0	0	0	0	0	0	0	0	0	.357	1	0	0	0	0	
E. MCFARLAND, c	I	3	0	0	0	0	0	0	0	1	0	0	0	0	0	0	0	0	.000	3	0	0	0	1	
P. BENNETT, 2b		3	0	0	0	0	0	0	0	0	0	0	0	0	0	0	0	0	.178	2	5	0	1		
G. MCBRIDE, lf	I	3	0	0	0	0	0	0	0	0	0	0	0	0	0	0	0	0	.143	3	0	0	0		
B. HOGG, p	I	2	0	0	0	0	0	0	0	1	0	0	0	0	0	0	0	0	.000						
N. Katon, ph		1	0	0	0	0	0	0	0	1	0	0	0	0	0	0	0	0	.167	0	0	0	0		
Totals		27	0	0	0	0	0	0	0	6	2	0	0	0	0	0	0	0							
NAME	FT	G	SC	IP	H	R	ER	2B	3B	HR	BF	SO	BB	IBB	HB	SH	SF	WP	BK	IR	ERA				
B. HOGG, L, 0- 1	I	48	8.0	5	7	3	0	1	0	0	37	4	8	0	0	0	0	0	0	0	3.38	0	3	1	0
Totals			8.0	5	7	3	0	1	0	0	37	4	8	0	0	0	0	0	0	0		24	14	1	1

INJURIES : J. DONAHUE (0 days), F. PAYNE (18 days)

South Starrucca Ainspans (Game 12)																									
NAME	FT	AB	R	HR	BI	2B	3B	HR	TB	SO	BB	IBB	HBP	SH	SF	SB	CS	GDP	AVG	PO	A	E	DP	PB	
J. DELAHANTY, cf		4	1	0	0	0	0	0	0	1	1	0	0	0	0	0	0	0	.189	1	0	0	0		
T. MADDEN, rf	I	3	2	1	0	0	0	0	1	0	1	0	0	0	0	0	0	0	.333	2	0	0	0		
D. JONES, lf		3	2	1	0	1	0	0	4	0	1	0	0	0	0	0	0	0	.333	2	0	0	0		
D. MURPHY, 2b		3	0	0	1	0	0	0	0	1	1	0	0	0	0	0	0	0	.167	0	5	0	0		
T. JONES, 1b		2	1	0	0	0	0	0	0	0	2	0	0	0	0	0	0	0	.267	16	0	0	0		
R. DOOIN, c		4	1	1	2	0	0	0	1	0	0	0	0	0	0	1	0	1	.275	6	0	0	0	0	
G. DUNDON, ss	I	4	0	1	2	0	0	0	1	1	0	0	0	0	0	0	0	0	.200	0	7	0	0		
S. Fiehl, 3b		3	0	0	0	0	0	0	0	1	1	0	0	0	0	0	0	0	.167	0	2	0	0		
L. HUGHES, p		3	0	0	0	0	0	0	0	0	1	0	0	0	0	0	0	0	.000						
Totals		29	7	5	6	0	1	0	7	4	8	0	0	0	0	1	0	1							
NAME	FT	G	SC	IP	H	R	ER	2B	3B	HR	BF	SO	BB	IBB	HB	SH	SF	WP	BK	IR	ERA				
L. HUGHES, W, 2- 0		91	9.0	0	0	0	0	0	0	0	29	6	2	0	0	0	0	0	0	0	.00	0	1	0	0
Totals			9.0	0	0	0	0	0	0	0	29	6	2	0	0	0	0	0	0	0		27	15	0	0

June 24

Addie Joss faces only 27 hitters to no-hit Pittsburgh. One runner reached on an E-4 and was promptly erased on a 6-4-3 GDP.

Team	1	2	3	4	5	6	7	8	9	R	H	E	LOB	DP
Waukesha Freeman	0	3	1	9	0	0	0	0	0	13	11	1	3	1
Pittsburgh Rebels	0	0	0	0	0	0	0	0	0	0	0	3	0	1

Waukesha Freeman (Game 67)																							
NAME	FT	AB	R	HRBI	2B	3B	HR	TB	SO	BB	IBB	HBP	SH	SF	SB	CS	GDP	AVG	PO	A	E	DP	PB
H. WAGNER, ss		3	2	1	0	0	0	1	1	0	0	2	0	0	0	0	0	.315	1	3	0	1	
M. HUGGINS, 2b		5	1	2	2	0	0	2	0	0	0	0	0	0	0	1	0	.309	1	3	1	1	
L. CROSS, 3b		5	1	1	1	0	0	1	2	0	0	0	0	0	0	0	0	.269	0	1	0	0	
T. JORDAN, 1b		4	2	0	1	0	0	0	1	0	0	0	0	1	0	0	0	.248	12	0	0	1	
J. KLING, rf		5	1	2	1	0	0	2	3	0	0	0	0	0	0	0	0	.315	4	0	0	0	
J. STAHL, cf		3	3	1	2	0	1	3	0	1	0	0	0	0	0	0	0	.207	4	0	0	0	
K. Sajdak, lf		5	1	3	4	1	0	1	7	2	0	0	0	0	0	0	0	.231	2	0	0	0	
J. O'CONNOR, c		3	1	1	0	0	0	1	1	1	0	0	0	0	0	0	0	.191	3	0	0	0	0
A. JOSS, p		4	1	0	0	0	0	0	2	0	0	0	0	0	0	0	0	.128					
Totals		37	13	11	11	1	1	1	17	12	2	0	2	0	1	0	1						

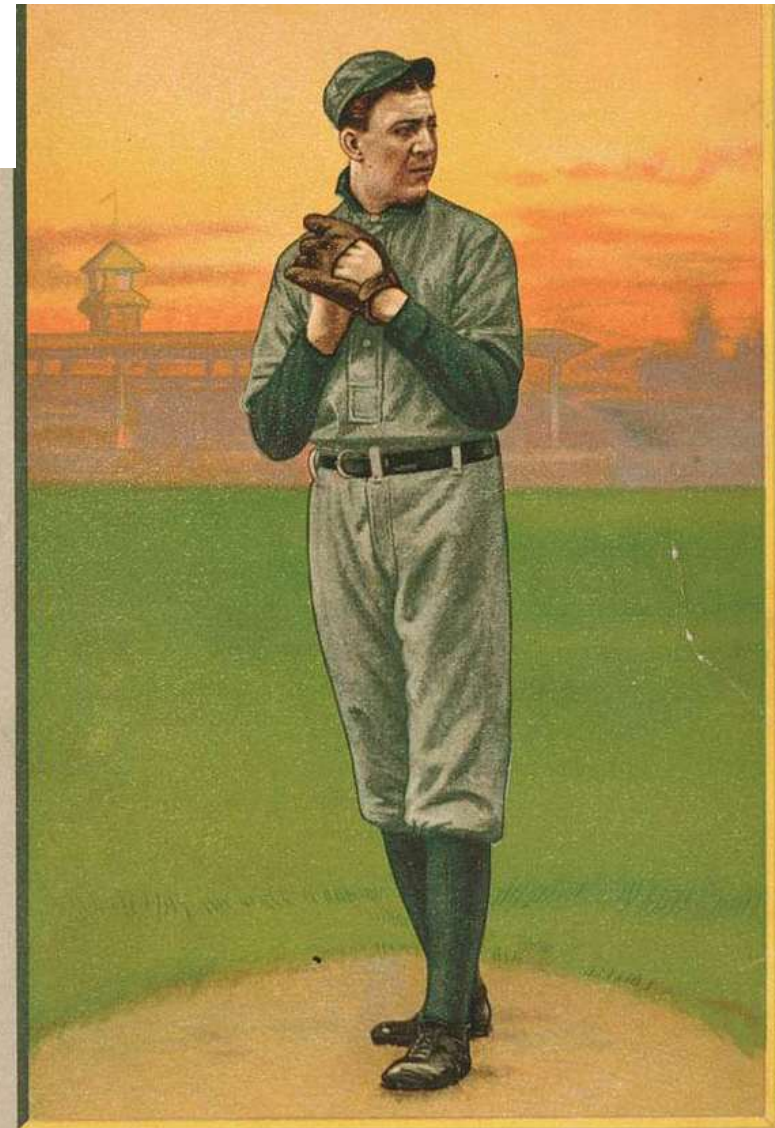
NAME	FT	G	SC	IP	H	R	ER	2B	3B	HR	BF	SO	BB	IBB	HB	SH	SF	WP	BK	IR	ERA
A. JOSS, W, 8- 6		89	9.0	0	0	0	0	0	0	0	27	2	0	0	0	0	0	0	0	0	1.50
Totals			9.0	0	0	0	0	0	0	0	27	2	0	0	0	0	0	0	0	0	

AFOE : J. STAHL

Pittsburgh Rebels (Game 67)																							
NAME	FT	AB	R	HRBI	2B	3B	HR	TB	SO	BB	IBB	HBP	SH	SF	SB	CS	GDP	AVG	PO	A	E	DP	PB
S. MERTES, rf		1	0	0	0	0	0	0	0	0	0	0	0	0	0	0	0	.237	0	0	0	0	
G. GOOD, ph-rf		2	0	0	0	0	0	0	0	0	0	0	0	0	0	0	0	.152	0	0	0	0	
S. BROWN, lf		3	0	0	0	0	0	0	0	0	0	0	0	0	0	0	0	.234	1	0	0	0	
D. MCGANN, 1b		1	0	0	0	0	0	0	1	0	0	0	0	0	0	0	0	.203	1	1	0	1	
P. DUFF, ph-1b-cf		2	0	0	0	0	0	0	0	0	0	0	0	0	0	0	0	.226	3	0	0	0	
J. TINKER, ss		1	0	0	0	0	0	0	0	0	0	0	0	0	0	0	0	.222	0	2	0	0	
B. PHYLE, ph-ss		2	0	0	0	0	0	0	1	0	0	0	0	0	0	0	0	.089	0	0	0	0	
G. BEAUMONT, cf		1	0	0	0	0	0	0	0	0	0	0	0	0	0	0	0	.283	1	2	0	1	
I. THOMAS, ph-c		2	0	0	0	0	0	0	0	0	0	0	0	0	0	0	0	.190	3	0	0	0	0
B. Flanagan, 3b		3	0	0	0	0	0	0	0	0	0	0	0	0	0	0	0	.228	1	3	1	1	
B. LOWE, 2b		3	0	0	0	0	0	0	0	0	0	0	0	0	0	0	0	.158	2	4	0	0	
F. BUELOW, c-1b		3	0	0	0	0	0	0	0	0	0	0	0	0	0	0	1	.211	15	1	1	0	1
R. WADDELL, p		1	0	0	0	0	0	0	0	0	0	0	0	0	0	0	0	.167					
C. GOODWIN, p	I	1	0	0	0	0	0	0	0	0	0	0	0	0	0	0	0	.167					
I. MCILVEEN, ph		1	0	0	0	0	0	0	0	0	0	0	0	0	0	0	0	.400	0	0	0	0	
Totals		27	0	0	0	0	0	0	2	0	0	0	0	0	0	0	0	1					

NAME	FT	G	SC	IP	H	R	ER	2B	3B	HR	BF	SO	BB	IBB	HB	SH	SF	WP	BK	IR	ERA
R. WADDELL, L, 8- 8		41	3.2	3	8	1	0	0	1	19	6	2	0	2	0	1	1	0	0	1.71	
C. GOODWIN	I	5.1	8	5	0	1	1	0	0	24	6	0	0	0	0	0	1	0	3	3.95	
Totals		9.0	11	13	1	1	1	1	1	43	12	2	0	2	0	1	2	0	3		

EJECTIONS : R. WADDELL



© JOSS CLEVELAND

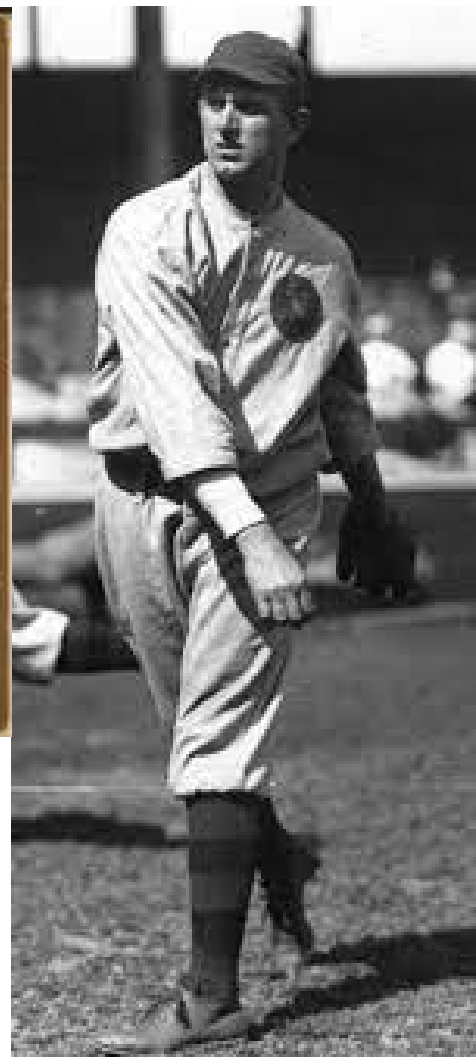
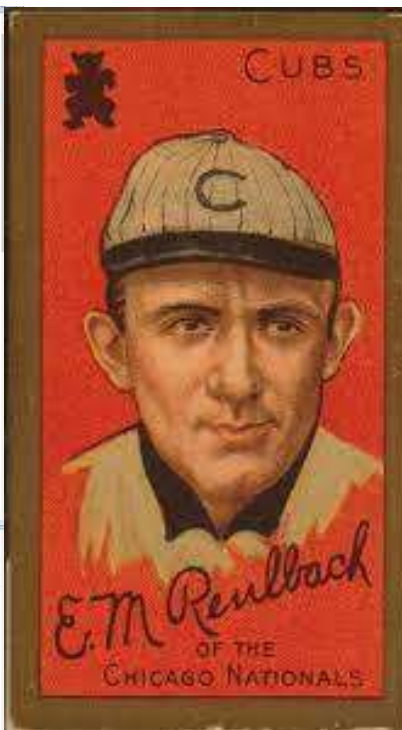
Team	1	2	3	4	5	6	7	8	9	R	H	E	LOB	DP
Long Island Islanders	0	0	0	0	0	0	0	0	0	0	0	0	1	1
Mimosa Mirthmakers	0	0	0	0	0	0	0	0	1	1	5	0	4	0

Long Island Islanders (Game 39)																							
NAME	FT	AB	R	HRBI	2B	3B	HR	TB	SO	BB	IBB	HBP	SH	SF	SB	CS	GDP	AVG	PO	A	E	DP	PB
H. SCHLAFLY, 2b		4	0	0	0	0	0	0	1	0	0	0	0	0	0	0	0	.202	1	2	0	1	
R. THOMAS, cf		3	0	0	0	0	0	0	1	0	0	0	0	0	0	0	0	.250	4	0	0	0	
E. FLICK, rf		2	0	0	0	0	0	0	0	1	0	0	0	0	0	0	0	.296	0	0	0	0	
G. BROWNE, lf		3	0	0	0	0	0	0	0	0	0	0	0	0	0	0	0	.222	1	0	0	0	
E. COURTNEY, 3b		3	0	0	0	0	0	0	0	0	0	0	0	0	0	0	0	.213	0	3	0	0	
M. GRIMSHAW, 1b		3	0	0	0	0	0	0	0	0	0	0	0	0	0	0	0	.262	12	2	0	1	
F. BOWERMAN, c		2	0	0	0	0	0	0	0	0	0	0	0	0	0	0	0	.212	4	0	0	0	0
J. WARD, ph		1	0	0	0	0	0	0	0	0	0	0	0	0	0	0	0	.300	0	0	0	0	
C. GRAHAM, c		0	0	0	0	0	0	0	0	0	0	0	0	0	0	0	0	.059	1	0	0	0	0
W. ALPERMAN, ss		3	0	0	0	0	0	0	0	0	0	0	0	0	0	0	0	.221	1	8	0	1	
B. EWING, p		3	0	0	0	0	0	0	1	0	0	0	0	0	0	0	0	.083					
Totals		27	0	0	0	0	0	0	3	1	0	0	0	0	0	0	0						

NAME	FT	G	SC	IP	H	R	ER	2B	3B	HR	BF	SO	BB	IBB	HB	SH	SF	WP	BK	IR	ERA				
B. EWING, L, 4-3		71	8.2	5	1	1	1	0	0	0	31	2	1	0	0	1	0	0	0	0	1.84				
Totals		8.2	5	1	1	1	0	0	0	0	31	2	1	0	0	1	0	0	0	0	26	16	0	1	0

Mimosa Mirthmakers (Game 39)																							
NAME	FT	AB	R	HRBI	2B	3B	HR	TB	SO	BB	IBB	HBP	SH	SF	SB	CS	GDP	AVG	PO	A	E	DP	PB
C. RITCHEY, 2b		3	0	2	0	1	0	0	3	0	1	0	0	0	0	0	0	.252	0	3	0	0	
J. SLAGLE, pr		0	1	0	0	0	0	0	0	0	0	0	0	0	0	0	0	.181	0	0	0	0	
D. GESSLER, cf		3	0	0	0	0	0	0	0	1	0	0	0	1	0	0	0	.250	2	0	0	0	
J. MCCARTHY, rf		4	0	0	0	0	0	0	0	0	0	0	0	0	0	0	0	.262	5	0	0	0	
C. ROSSMAN, 1b		4	0	2	1	0	0	0	2	0	0	0	0	0	0	0	0	.390	12	0	0	0	
F. CLARKE, lf		3	0	0	0	0	0	0	0	0	0	0	0	0	0	0	0	.296	4	0	0	0	
B. COUGHLIN, 3b		3	0	0	0	0	0	0	0	0	0	0	0	0	0	0	0	.136	1	1	0	0	
C. O'LEARY, ss		3	0	1	0	0	0	0	1	0	0	0	0	0	0	0	0	.226	0	6	0	0	
D. MARSHALL, c	I	2	0	0	0	0	0	0	0	0	0	0	0	0	0	0	1	.276	3	0	0	0	0
J. HIMES, ph		1	0	0	0	0	0	0	0	1	0	0	0	0	0	0	0	.278	0	0	0	0	
J. WARNER, c		0	0	0	0	0	0	0	0	0	0	0	0	0	0	0	0	.231	0	0	0	0	
E. REULBACH, p		3	0	0	0	0	0	0	0	0	0	0	0	0	0	0	0	.250					
Totals		29	1	5	1	1	0	0	6	2	1	0	0	1	0	0	0	1					

NAME	FT	G	SC	IP	H	R	ER	2B	3B	HR	BF	SO	BB	IBB	HB	SH	SF	WP	BK	IR	ERA				
E. REULBACH, W, 5-3		89	9.0	0	0	0	0	0	0	0	28	3	1	0	0	0	0	0	0	0	1.03				
Totals		9.0	0	0	0	0	0	0	0	0	28	3	1	0	0	0	0	0	0	0	27	11	0	0	0



May 25
A walk to Elmer Flick is the only thing keeping Ed Reulbach from perfection, as he no-hits Long Island. Bob Ewing gave up the game winner with 2 outs in the 9th to Claude Rossman

June 11
Chief Bender outduels Rube Waddell (who throws a 2-hitter) with a NO-HITTER, walking 2, who were both thrown out stealing, and overcoming one error.

Team	1	2	3	4	5	6	7	8	9	R	H	E	LOB	DP
Buffalo Mules	0	1	0	0	0	0	0	0	0	1	2	1	4	0
Pittsburgh Rebels	0	0	0	0	0	0	0	0	0	0	0	1	1	1

Buffalo Mules (Game 55)																								
NAME	FT	AB	R	HR	BI	2B	3B	HR	TB	SO	BB	IBB	HBP	SH	SF	SB	CS	GDP	AVG	PO	A	E	DP	PB
F. JONES, cf		2	0	0	0	0	0	0	0	0	1	0	0	1	0	1	0	1	.293	0	0	0	0	0
N. Katon, 1b		4	0	0	0	0	0	0	0	3	0	0	0	0	0	0	0	0	.183	10	0	0	0	0
P. BENNETT, 2b		4	0	1	0	0	0	0	1	0	0	0	0	0	0	0	0	0	.225	2	1	1	0	0
G. DAVIS, ss		4	0	1	0	0	0	0	1	1	0	0	0	0	0	1	1	0	.257	1	3	0	0	0
S. MAGEE, lf		2	1	0	0	0	0	0	0	2	2	0	0	0	0	2	0	0	.282	4	0	0	0	0
G. MCBRIDE, rf		2	0	0	1	0	0	0	0	0	0	0	0	1	0	0	0	0	.215	1	0	0	0	0
E. MCFARLAND, c		3	0	0	0	0	0	0	0	1	0	0	0	0	0	0	0	0	.162	8	4	0	0	0
F. CRAWFORD, 3b		3	0	0	0	0	0	0	0	1	0	0	0	0	0	0	0	0	.158	1	3	0	0	0
C. BENDER, p		1	0	0	0	0	0	0	0	1	1	0	1	0	0	0	0	0	.324					
Totals		25	1	2	1	0	0	0	2	9	4	0	1	2	0	4	1	1						

NAME	FT	G	SC	IP	H	R	ER	2B	3B	HR	BF	SO	BB	IBB	HB	SH	SF	WP	BK	IR	ERA	
C. BENDER, W, 11- 2		9	2	9.0	0	0	0	0	0	0	28	7	2	0	0	0	0	0	0	0	0	1.40
Totals		9.0	0	0	0	0	0	0	0	0	28	7	2	0	0	0	0	0	0	0	0	27 12 1 0 0

Pittsburgh Rebels (Game 55)																								
NAME	FT	AB	R	HR	BI	2B	3B	HR	TB	SO	BB	IBB	HBP	SH	SF	SB	CS	GDP	AVG	PO	A	E	DP	PB
D. MCGANN, 1b		4	0	0	0	0	0	0	0	1	0	0	0	0	0	0	0	0	.216	8	0	0	1	0
I. THOMAS, c		3	0	0	0	0	0	0	0	0	0	0	0	0	0	0	0	0	.189	9	1	0	0	0
H. FERRIS, 2b		3	0	0	0	0	0	0	0	2	0	0	0	0	0	0	0	0	.217	3	2	0	1	0
G. BEAUMONT, cf		3	0	0	0	0	0	0	0	1	0	0	0	0	0	0	0	0	.298	3	0	0	0	0
J. TINKER, ss		2	0	0	0	0	0	0	0	2	1	0	0	0	0	0	1	0	.235	1	5	1	1	0
B. Flanagan, lf		3	0	0	0	0	0	0	0	0	0	0	0	0	0	0	0	0	.259	1	1	0	0	0
B. PHYLE, rf		3	0	0	0	0	0	0	0	1	0	0	0	0	0	0	0	0	.104	1	0	0	0	0
B. LOWE, 3b		3	0	0	0	0	0	0	0	0	0	0	0	0	0	0	0	0	.182	1	3	0	0	0
R. WADDELL, p		1	0	0	0	0	0	0	0	0	1	0	0	0	0	0	1	0	.190					
F. BUELOW, ph		1	0	0	0	0	0	0	0	0	0	0	0	0	0	0	0	0	.333	0	0	0	0	0
Totals		26	0	0	0	0	0	0	0	7	2	0	0	0	0	0	2	0						

NAME	FT	G	SC	IP	H	R	ER	2B	3B	HR	BF	SO	BB	IBB	HB	SH	SF	WP	BK	IR	ERA
R. WADDELL, L, 8- 5		8	4	9.0	2	1	1	0	0	0	32	9	4	0	1	2	0	0	1	0	1.54
Totals		9.0	2	1	1	0	0	0	0	0	32	9	4	0	1	2	0	0	1	0	27 13 1 1 0



June 12

Mordecai "Three Finger" Brown strikes out 10 while walking two, surviving two errors to NO-HIT the Islanders



Team	1	2	3	4	5	6	7	8	9	R	H	E	LOB	DP
Long Island Islanders	0	0	0	0	0	0	0	0	0	0	0	2	2	1
Bergen Barflies	1	0	3	4	2	0	0	0		10	18	2	12	1

Long Island Islanders (Game 56)																											
NAME	FT	AB	R	HR	BI	2B	3B	HR	TB	SO	BB	IBB	HBP	SH	SF	SB	CS	GDP	AVG	PO	A	E	DP	PB			
H. SCHLAFLY, 2b		4	0	0	0	0	0	0	0	2	0	0	0	0	0	0	0	0	.189	1	2	0	0				
R. THOMAS, cf		4	0	0	0	0	0	0	0	1	0	0	0	0	0	0	0	0	.244	3	0	0	0				
E. FLICK, rf		3	0	0	0	0	0	0	0	2	0	0	0	0	0	0	0	0	.276	1	0	0	0				
G. BROWNE, lf		3	0	0	0	0	0	0	0	0	0	0	0	0	0	0	0	0	.226	0	1	0	0				
E. COURTNEY, 3b		3	0	0	0	0	0	0	0	1	0	0	0	0	0	0	0	0	.232	0	2	0	0				
M. GRIMSHAW, 1b		3	0	0	0	0	0	0	0	2	0	0	0	0	0	0	0	0	.245	11	0	0	1				
F. BOWERMAN, c		3	0	0	0	0	0	0	0	0	0	0	0	0	0	0	0	0	.213	7	0	2	0	0			
W. ALPERMAN, ss		3	0	0	0	0	0	0	0	2	0	0	0	0	0	0	0	0	.234	1	7	0	1				
C. LUNDGREN, p		0	0	0	0	0	0	0	0	0	2	0	0	0	0	0	0	0	.125								
J. McEaney, ph		1	0	0	0	0	0	0	0	0	0	0	0	0	0	0	0	0	.340	0	0	0	0				
Totals		27	0	0	0	0	0	0	0	10	2	0	0	0	0	0	0	1									
NAME	FT	G	SC	IP	H	R	ER	2B	3B	HR	BF	SO	BB	IBB	HB	SH	SF	WP	BK	IR	ERA						
C. LUNDGREN, L, 6- 5		13	8.0	18	10	8	2	0	1	46	7	4	0	0	0	0	0	0	0	0	2.70		0	2	0	1	
Totals			8.0	18	10	8	2	0	1	46	7	4	0	0	0	0	0	0	0	0			24	14	2	1	0

Bergen Barflies (Game 56)																											
NAME	FT	AB	R	HR	BI	2B	3B	HR	TB	SO	BB	IBB	HBP	SH	SF	SB	CS	GDP	AVG	PO	A	E	DP	PB			
D. ALTIZER, ss		6	1	1	0	0	0	0	1	0	0	0	0	0	0	0	0	0	.240	3	2	1	1				
M. GRADY, c		5	2	2	1	0	0	1	5	2	0	0	0	0	0	0	0	0	.324	10	0	0	0	0			
G. STONE, cf		5	1	3	1	0	0	0	3	1	0	0	0	0	0	0	0	0	.376	1	0	0	0				
S. SEYBOLD, lf		3	3	3	0	0	0	0	3	0	2	0	0	0	0	0	0	0	.354	1	0	0	0				
C. HICKMAN, rf		5	2	3	2	1	0	0	4	1	0	0	0	0	0	0	0	1	.288	2	1	0	0				
J. NEALON, 1b		4	1	3	3	1	0	0	4	0	1	0	0	0	0	0	0	0	.273	9	1	0	1				
L. Meade, 2b		5	0	0	0	0	0	0	0	2	0	0	0	0	0	0	0	0	.257	0	5	0	0				
D. BRAIN, 3b		4	0	2	1	0	0	0	2	0	0	0	0	0	0	0	0	0	.260	1	1	0	0				
T. BROWN, p		4	0	1	1	0	0	0	1	1	1	0	0	0	0	0	0	0	.159								
Totals		41	10	18	9	2	0	1	23	7	4	0	0	0	0	0	0	1									
NAME	FT	G	SC	IP	H	R	ER	2B	3B	HR	BF	SO	BB	IBB	HB	SH	SF	WP	BK	IR	ERA						
T. BROWN, W, 11- 2		95	9.0	0	0	0	0	0	0	0	29	10	2	0	0	0	0	0	0	0	1.32		0	2	1	0	
Totals			9.0	0	0	0	0	0	0	0	29	10	2	0	0	0	0	0	0	0			27	12	2	1	0

AFOE : D. BRAIN

September 20

Lefty Leifield gives up an unearned 1st inning run, but goes the distance to throw a NO-HITTER for Waukesha, facing 29 batters

Team	1	2	3	4	5	6	7	8	9	R	H	E	LOB	DP
Mimosa Mirthmakers	1	0	0	0	0	0	0	0	0	1	0	2	1	2
Waukesha Freeman	1	1	1	1	0	0	0	0	0	4	9	1	6	0

Mimosa Mirthmakers (Game 151)																							
NAME	FT	AB	R	HRBI	2B	3B	HR	TB	SO	BB	IBB	HBP	SH	SF	SB	CS	GDP	AVG	PO	A	E	DP	PB
R. NILL, 2b		3	1	0	0	0	0	0	0	1	0	0	0	0	0	0	0	.187	4	4	0	2	
B. COUGHLIN, 3b		3	0	0	0	0	0	0	0	0	0	0	1	0	0	0	0	.227	3	2	0	2	
G. STOVALL, 1b		3	0	0	0	0	0	0	0	0	0	0	0	0	0	0	0	.278	8	0	1	2	
J. ANDERSON, lf		3	0	0	0	0	0	0	0	0	0	0	0	0	0	0	0	.249	3	0	0	0	
J. BIRMINGHAM, cf		3	0	0	0	0	0	0	1	0	0	0	0	0	0	0	0	.156	1	0	0	0	
J. SLAGLE, rf		3	0	0	0	0	0	0	0	0	0	0	0	0	0	0	0	.217	0	0	0	0	
P. LEWIS, ss		3	0	0	0	0	0	0	1	0	0	0	0	0	0	0	0	.276	2	3	1	0	
P. LIVINGSTON, c		3	0	0	0	0	0	0	1	0	0	0	0	0	0	0	0	.241	3	0	0	0	0
C. PATTEN, p		2	0	0	0	0	0	0	0	0	0	0	0	0	0	0	0	.121					
L. Smith, ph		1	0	0	0	0	0	0	0	0	0	0	0	0	0	0	0	.129	0	0	0	0	
Totals		27	1	0	0	0	0	0	3	1	0	0	1	0	0	0	0						

NAME	FT	G	SC	IP	H	R	ER	2B	3B	HR	BF	SO	BB	IBB	HB	SH	SF	WP	BK	IR	ERA	
C. PATTEN, L, 19-12		50	8.0	9	4	3	0	0	0	0	34	1	1	0	0	0	0	0	0	0	0	2.28
Totals		8.0	9	4	3	0	0	0	0	0	34	1	1	0	0	0	0	0	0	0	0	24 12 2 2 0

Waukesha Freeman (Game 152)																							
NAME	FT	AB	R	HRBI	2B	3B	HR	TB	SO	BB	IBB	HBP	SH	SF	SB	CS	GDP	AVG	PO	A	E	DP	PB
M. HUGGINS, 2b		4	1	2	1	0	0	2	0	0	0	0	0	0	0	0	0	.309	0	5	0	0	
J. KLING, rf		4	0	2	1	0	0	2	0	0	0	0	0	0	0	0	0	.300	3	0	1	0	
H. WAGNER, ss		4	0	0	1	0	0	0	0	0	0	0	0	0	1	0	1	.332	0	2	0	0	
F. ISBELL, lf		4	1	1	0	0	0	1	0	0	0	0	0	0	1	0	0	.288	2	0	0	0	
L. CROSS, 3b		4	0	1	1	0	0	1	0	0	0	0	0	0	0	0	0	.259	0	3	0	0	
A. BURCH, cf		4	0	1	0	0	0	1	0	0	0	0	0	0	0	0	0	.245	4	0	0	0	
J. STAHL, 1b		4	1	1	0	0	0	1	0	0	0	0	0	0	1	0	1	.236	12	1	0	0	
J. O'CONNOR, c		3	1	1	0	0	0	1	0	0	0	0	0	0	0	0	0	.210	5	1	0	0	0
L. LEIFIELD, p		2	0	0	0	0	0	0	1	1	0	0	0	0	0	0	0	.138					
Totals		33	4	9	4	0	0	9	1	1	0	0	0	0	3	0	2						

NAME	FT	G	SC	IP	H	R	ER	2B	3B	HR	BF	SO	BB	IBB	HB	SH	SF	WP	BK	IR	ERA	
L. LEIFIELD, W, 18-12		87	9.0	0	1	0	0	0	0	0	29	3	1	0	0	1	0	0	0	0	0	2.05
Totals		9.0	0	1	0	0	0	0	0	0	29	3	1	0	0	1	0	0	0	0	0	27 14 1 0 0



A vinyl record is shown from a top-down perspective, partially covered by a bright blue sleeve. The record's surface is black with a white center. The text "ONE-HIT WONDERS" is printed in a bold, yellow, sans-serif font with a red outline, centered on the record. The sleeve is partially visible at the bottom and sides, framing the record.

**ONE-HIT
WONDERS**

We had 12 one-hitters thrown this season, in addition to the six no-hitters. Bob Rhoads (pictured below) was the only fellow to throw two of them. The others were tossed by Ed Reulbach (who also had a no-hitter), Vic Willis, Rube Waddell, Bob Ewing, Tully Sparks, Doc White, Eddie Plank, Casey Patten and Big Ed Walsh.

Long Island's Roy Thomas broke up two of those (Waddell & Walsh), but the most interesting spoiler came off the bat of Player-Manager Baldy Flanagan, of Pittsburgh, who ruined Doc White's effort.



April 30 Roger Bresnahan steals a TCBA record seven bases, but it takes TWENTY-FIVE INNINGS to get the job done in the longest game of our season

25

innings

7

#1 Tip For Stealing Bases
The math you need to know



Team	1	2	3	4	5	6	7	8	9	10	11	12
Wilderness Wraiths	0	0	0	0	2	0	0	0	0	0	0	0
Turin Mountaineers	0	0	0	0	2	0	0	0	0	0	0	0

Team	13	14	15	16	17	18	19	20	21	22	23	24
Wilderness Wraiths	0	0	0	0	0	0	0	0	0	0	0	0
Turin Mountaineers	0	0	0	0	0	0	0	0	0	0	0	0

Team	25	R	H	E	LOB	DP
Wilderness Wraiths	1	3	8	2	9	0
Turin Mountaineers	0	2	14	5	20	4

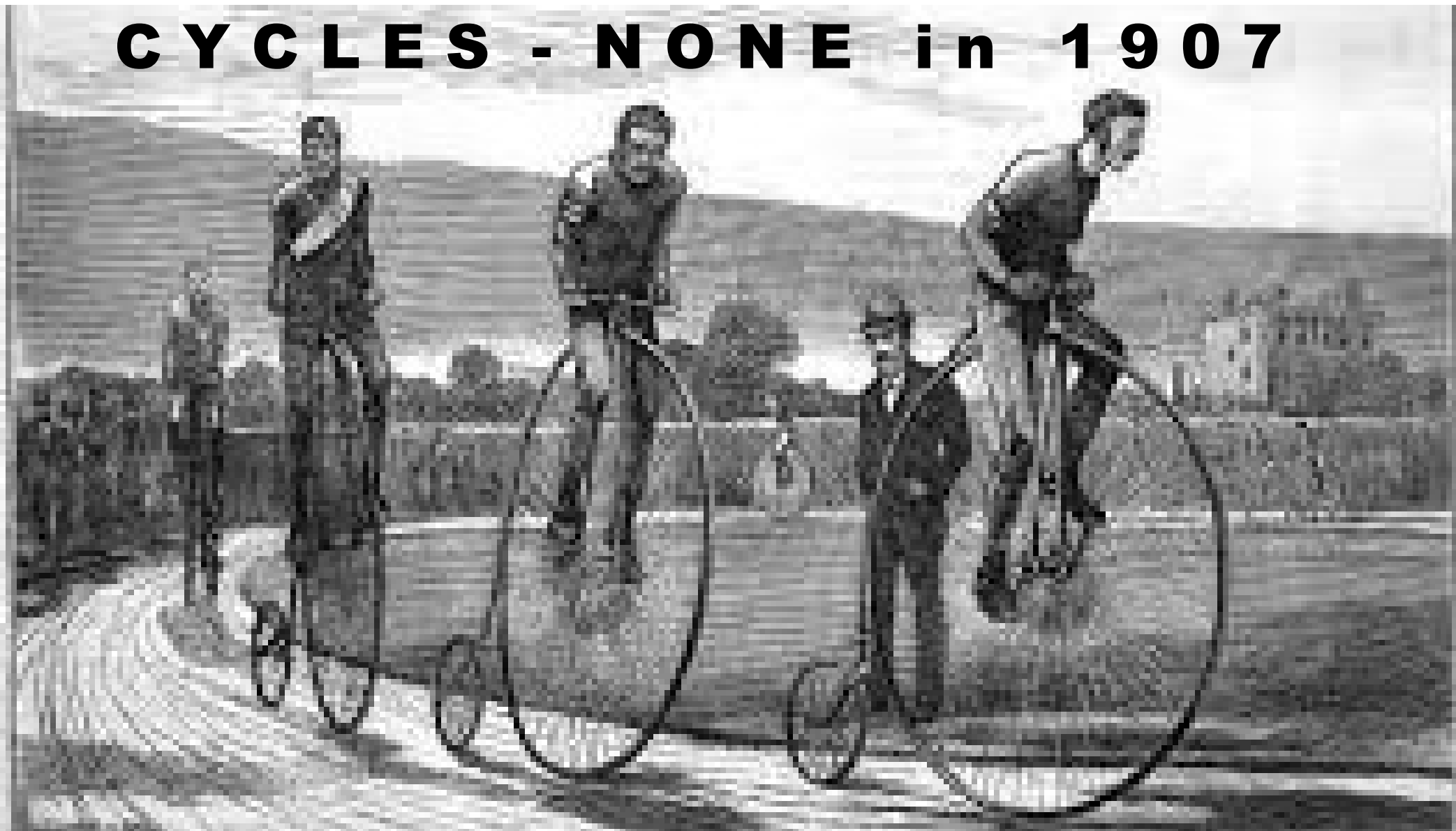
Wilderness Wraiths (Game 17)																							
NAME	FT	AB	R	HRBI	2B	3B	HR	TB	SO	BB	IBB	HBP	SH	SF	SB	CS	GDP	AVG	PO	A	E	DP	PB
P. SENTELL, 3b		10	0	2	2	0	0	2	2	0	0	0	0	0	2	0	0	.269	0	2	0	0	
D. HOWARD, 1b		10	0	0	0	0	0	0	1	0	0	0	0	0	0	0	0	.205	29	5	0	0	
W. KEELER, cf		10	0	3	0	0	0	3	0	0	0	0	0	2	1	0	0	.269	9	0	0	0	
R. BRESNAHAN, c		5	1	2	0	1	0	3	1	4	1	0	1	0	7	0	1	.356	14	4	0	0	0
M. DOOLAN, ss		7	1	0	1	0	0	0	1	2	0	0	0	1	1	0	0	.135	4	9	0	0	
S. Sibley, 2b		10	0	0	0	0	0	0	2	0	0	0	0	0	0	0	1	.211	8	7	0	0	
R. VINSON, lf		9	1	1	0	0	0	1	2	0	0	0	0	0	1	2	0	.080	5	0	1	0	
H. NILES, rf		7	0	0	0	0	0	0	3	1	0	0	1	0	1	0	0	.197	3	0	0	0	
J. MCGINNITY, p		8	0	0	0	0	0	0	3	0	0	0	0	0	0	0	0	.053					
F. SMITH, p		1	0	0	0	0	0	0	0	0	0	0	0	0	0	0	0	.000					
Totals		77	3	8	3	1	0	9	15	7	1	0	2	1	14	3	2						

NAME	FT	G	SC	IP	H	R	ER	2B	3B	HR	BF	SO	BB	IBB	HB	SH	SF	WP	BK	IR	ERA
J. MCGINNITY		11	420	2	13	2	0	3	0	0	82	8	6	2	1	3	0	0	0	0	1.46
F. SMITH, W, 1-1		4	1	0	0	1	0	0	0	0	15	1	1	1	0	0	0	0	0	0	1.35
Totals		25	0	14	2	0	4	0	0	0	97	9	7	3	1	3	0	0	0	0	2

Turin Mountaineers (Game 17)																							
NAME	FT	AB	R	HRBI	2B	3B	HR	TB	SO	BB	IBB	HBP	SH	SF	SB	CS	GDP	AVG	PO	A	E	DP	PB
F. LAPORTE, lf		11	0	3	0	0	0	3	1	0	0	0	0	0	0	0	0	.161	6	0	0	0	
L. MCLEAN, rf		4	0	0	0	0	0	0	0	2	0	0	0	0	0	0	0	.175	4	0	0	0	
J. BARBEAU, pr-ss		4	0	0	0	0	0	0	0	0	0	0	0	1	0	0	0	.095	0	3	1	0	
B. BRADLEY, 3b		9	1	3	0	2	0	5	0	1	1	0	1	0	0	1	0	.225	3	5	0	1	
J. MCCARTHY, c		3	0	1	0	0	0	1	0	0	0	0	0	0	0	0	0	.256	7	0	0	0	0
B. ABSTEIN, pr		0	1	0	0	0	0	0	0	0	0	0	0	0	0	0	0	.222	0	0	0	0	
D. MCGUIRE, c		3	0	1	0	0	0	1	0	1	1	0	0	0	0	0	0	.188	6	1	0	1	0
J. HANNIFIN, pr		0	0	0	0	0	0	0	0	0	0	0	0	0	0	1	0	.227	0	0	0	0	
T. SPENCER, c		4	0	1	0	1	0	2	0	0	0	0	0	0	0	0	0	.150	5	2	1	0	0
P. Pio, ss		3	0	1	0	1	0	2	1	0	0	0	0	0	0	0	0	.214	1	3	1	2	
S. HOFMAN, ph-ss-rf		6	0	0	0	0	0	0	1	2	1	0	0	0	0	0	0	.136	5	3	0	1	
C. LINDSAY, 1b		10	0	0	0	0	0	0	1	1	0	0	0	0	0	0	0	.131	23	6	0	2	
H. WAGNER, 2b		11	0	1	1	0	0	1	2	0	0	0	0	0	0	0	0	.241	4	7	2	1	
B. LORD, cf		10	0	2	0	0	0	2	1	0	0	0	0	0	1	0	0	.203	4	0	0	0	
B. PFEFFER, p		6	0	0	0	0	0	0	1	0	0	1	1	0	0	0	0	.125					
M. HEYDON, ph		1	0	1	0	0	0	1	0	0	0	0	0	0	0	0	0	.500	0	0	0	0	
R. GLAZE, p		1	0	0	0	0	0	0	1	0	0	0	0	0	0	0	0	.000					
E. KARGER, p		0	0	0	0	0	0	0	0	0	0	0	0	0	0	0	0	.111					
Totals		86	2	14	1	4	0	18	9	7	3	1	3	0	2	1	0						

NAME	FT	G	SC	IP	H	R	ER	2B	3B	HR	BF	SO	BB	IBB	HB	SH	SF	WP	BK	IR	ERA
B. PFEFFER		13	521	0	7	2	0	1	0	0	73	13	6	1	0	2	0	0	0	0	2.54
R. GLAZE		3	0	1	0	0	0	0	0	0	10	2	0	0	0	0	0	0	0	0	1.74
E. KARGER, L, 1-3		1	0	0	1	1	0	0	0	0	4	0	1	0	0	0	1	0	0	0	1.00
Totals		25	0	8	3	1	1	0	0	0	87	15	7	1	0	2	1	0	0	0	

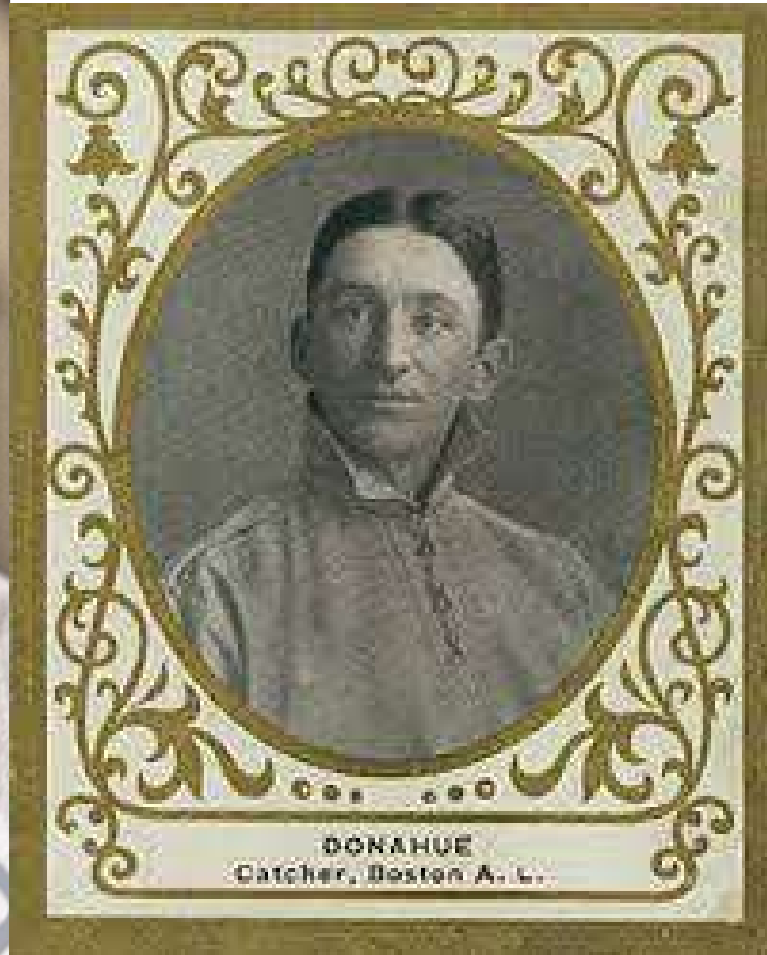
CYCLES - NONE in 1907



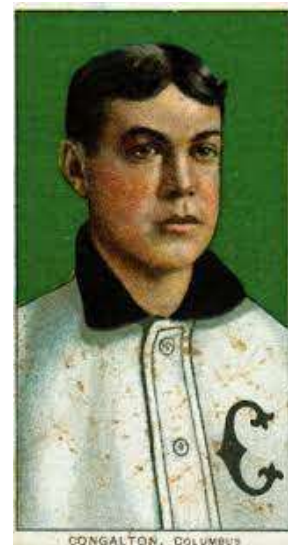




Bradenton's Napoleon LaJoie led all hitters, collecting five hits in one game **THREE** times
Jiggs Donahue thrilled Buffalo fans with a **PAIR** of five hit afternoons.



$$\frac{3}{2}$$



**BE-Jim Nealon,
HH-Harry Bay,**

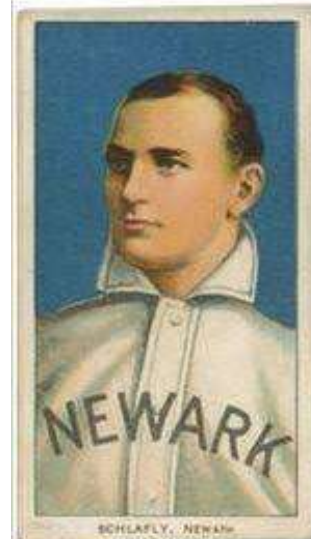
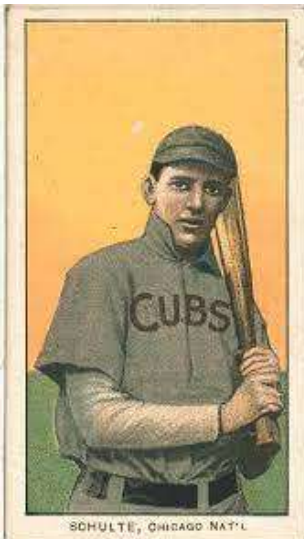
**Dave Altizer,
Ed Hahn**

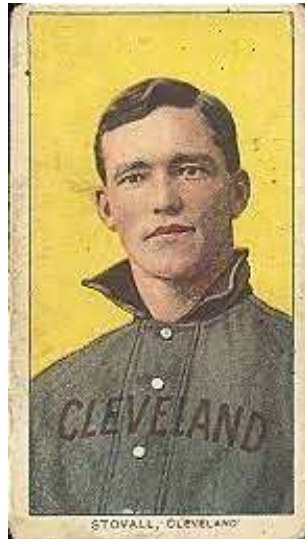
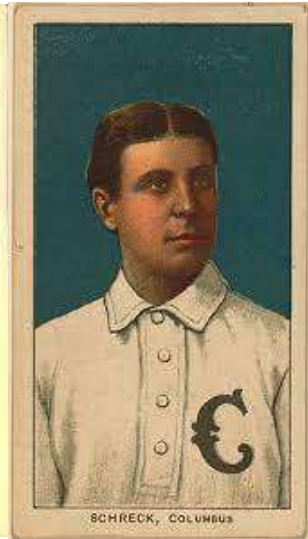
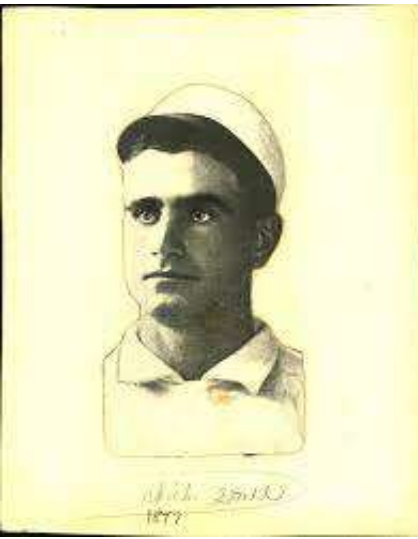
**Charlie Hickman
HP-Hal Chase,**

**BS-Tommie Leach
Wildfire Schulte**

**BU-Ty Cobb
LI-Elmer Flick,**

**CL-Bunk Congalton
Larry Schlafly**

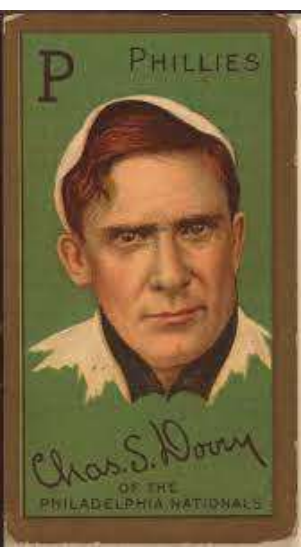




ME-Chick Stahl, Ossie Schreckengost
SO-Red Dooin **TU-Red Murray**

MI-George Stovall,
WA-Jack Hoey

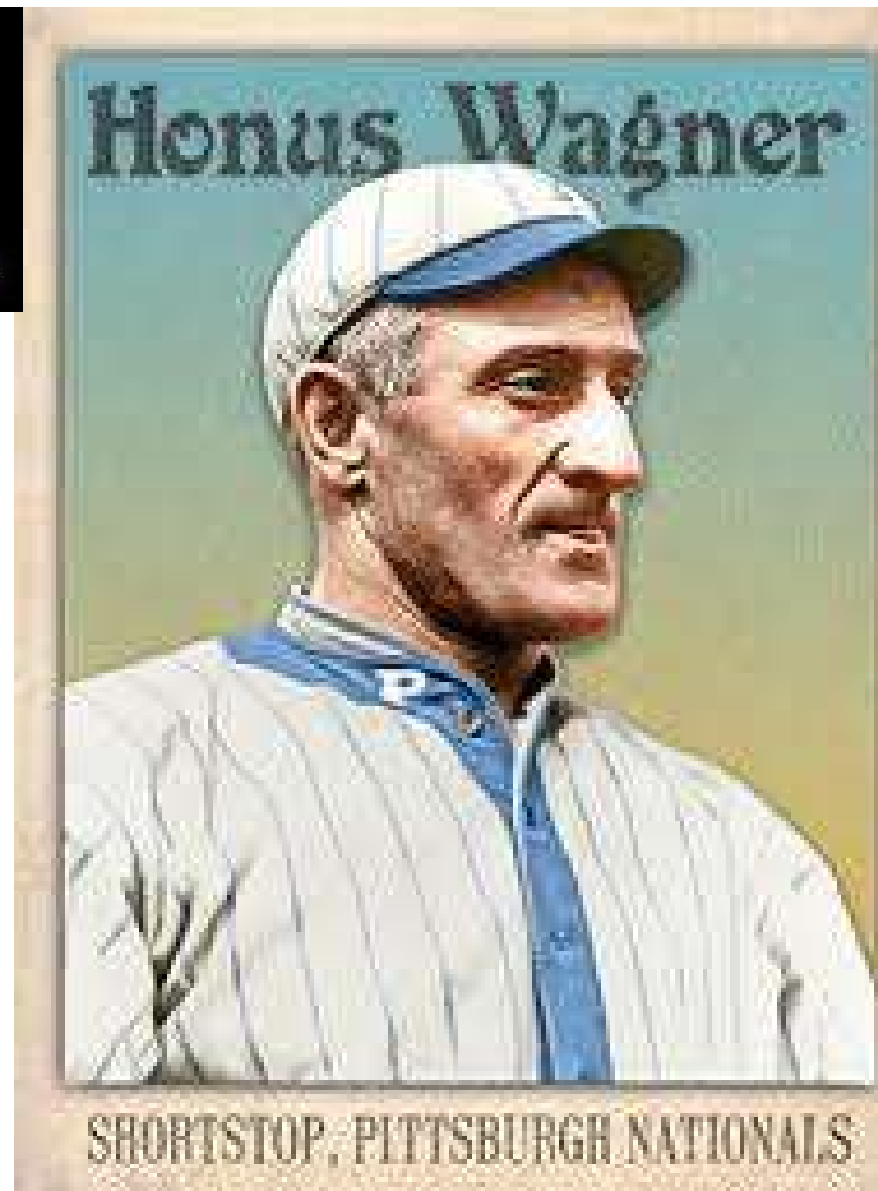
Jack McCarthy **PR-Ginger Beaumont**
BR-PITCHER JACK COOMBS





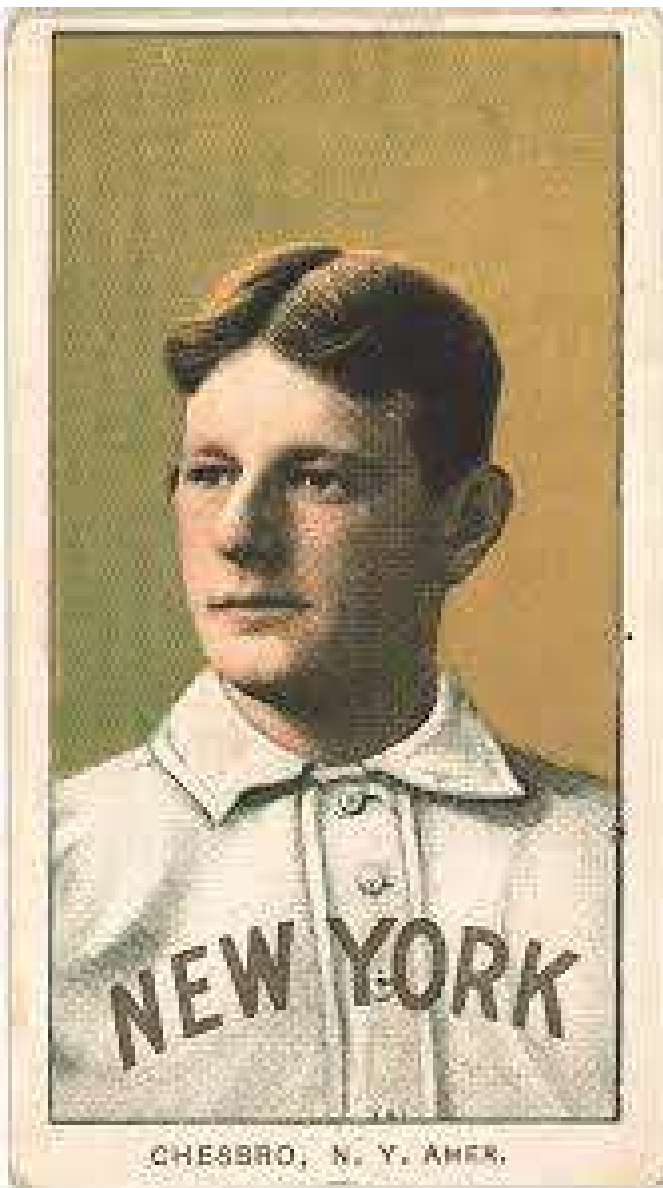
Socks Seybold
Bergen, 16-2,
May 29 @ Turin
7-2-6-4 Six Hits

Honus Wagner
Waukesha, 15-0,
August 17
@ South Starrucca
7-4-6-2 Six Hits
(double)



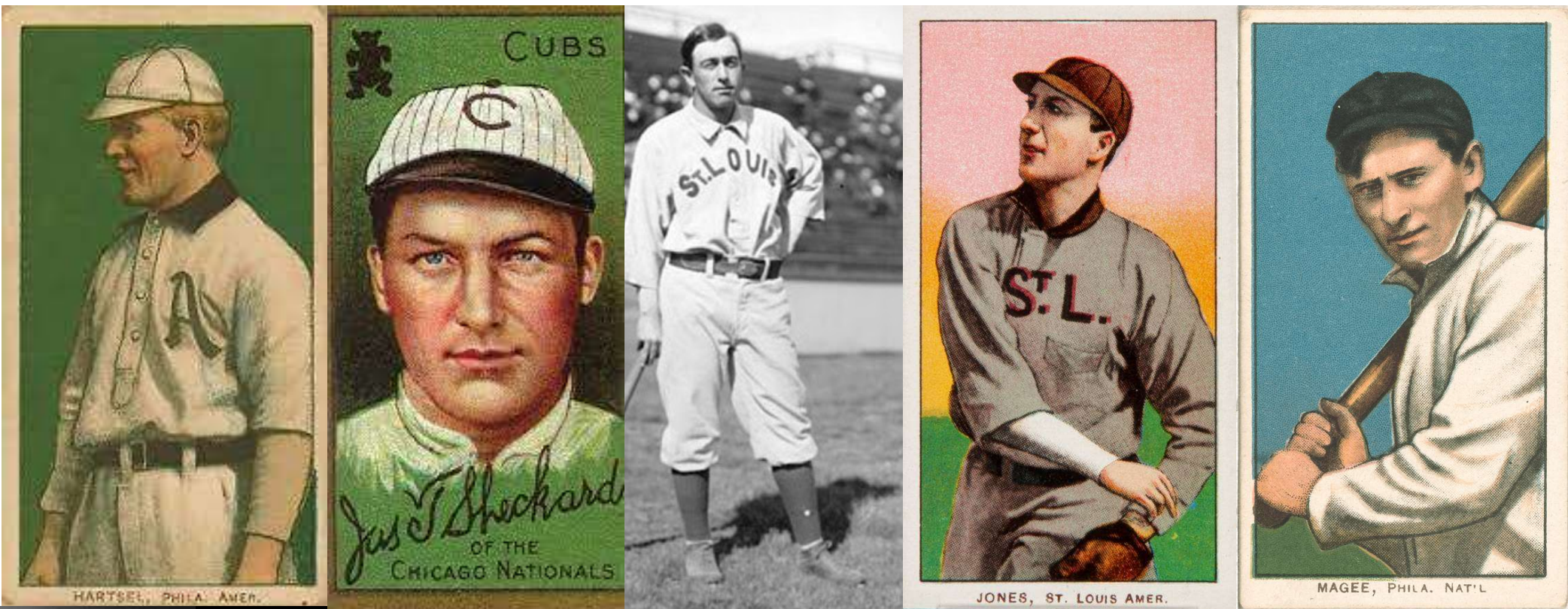
**Eight players score
five times in one game**

Five Runs Farm

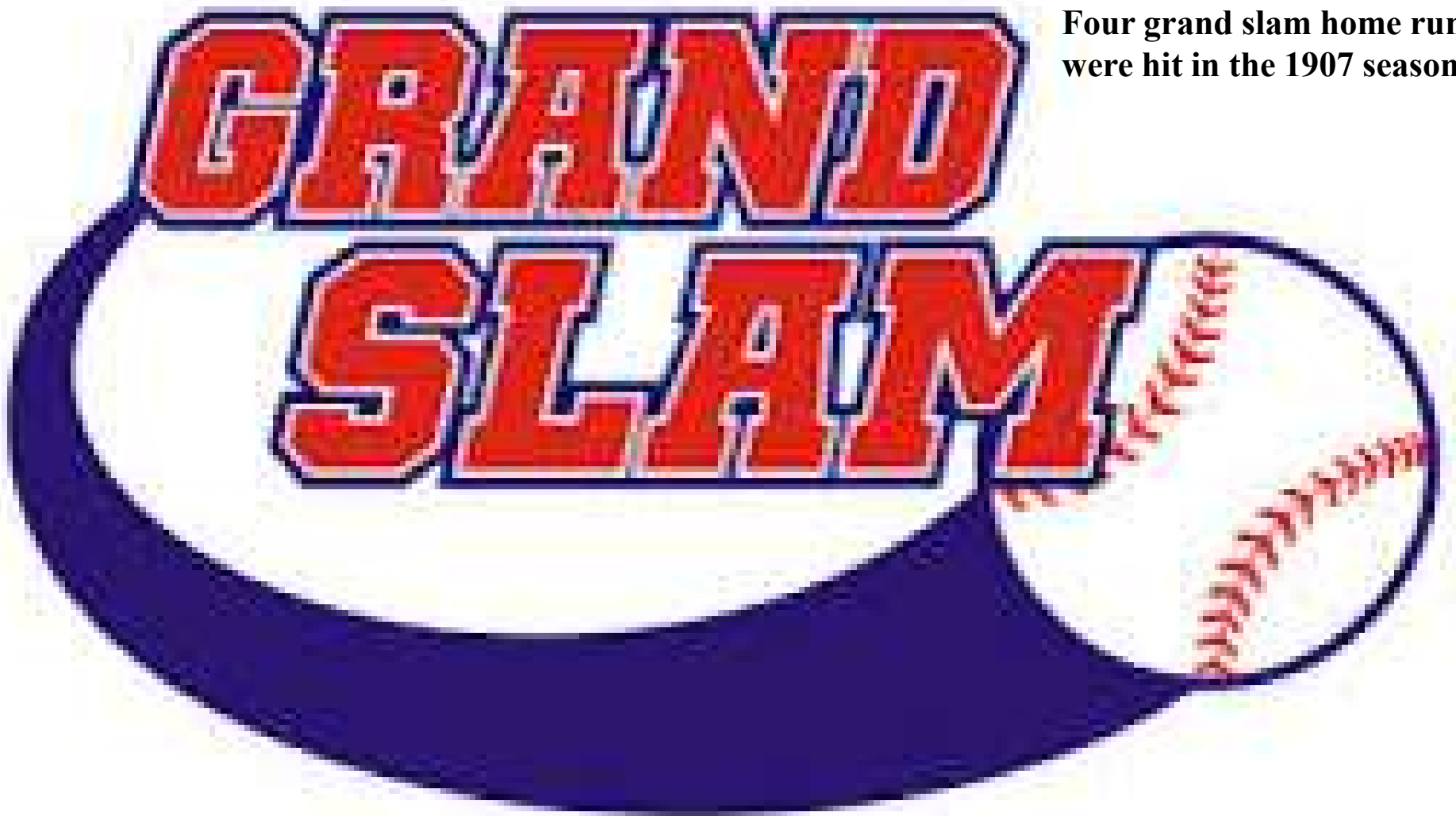


**Two of the eight were pitchers!
Jack Chesbro (Bergen)
And
Johnny Lush (Hereford)**





The other six hitters to score FIVE RUNS in one game, included Topsy Hartzel (Boston), Jimmy Sheckard (Hyde Park), Homer Smoot (Bradenton), Tom Jones (South Starrucca), Sherry Magee (Buffalo) and catcher Mike Grady (Bergen, pictured twice on left)



Four grand slam home runs were hit in the 1907 season.



Harry Davis hit TWO grand slams for Hereford, whose player-manager Doc Lyon also connected for one. Bergen's George Stone was the only non-Highlander to hit a Grand Slam

DOUBLE
TROUBLE

Five times a batter had TWO home runs in a single game.

May 16 – George Stone, Bergen against Wilderness in an 8-9 defeat

June 28 - Socks Seybold, Bergen in Mexicali in a 5-3 win

August 2- Charlie Hickman, Bergen against Mexicali in a 5-4 victory

September 20 – Bunk Congalton, Cleveland against Bradenton in an 8-9, 10 inning loss

September 22 – Harry Davis, Hereford in Turin in a 5-4 triumph.

But, the most powerful performance came on July 9 when Charlie “Piano Legs”

Hickman hit THREE home runs for Bergen in a 12-0 whitewash in Pittsburgh. Charlie finished 3rd in the league with nine home runs all season, with half of them hit in those two games



Three.



Hickman wasn't the only player to get three long hits in a game. In all, there were 25 occasions that one hitter had three (or more) extra-base hits.

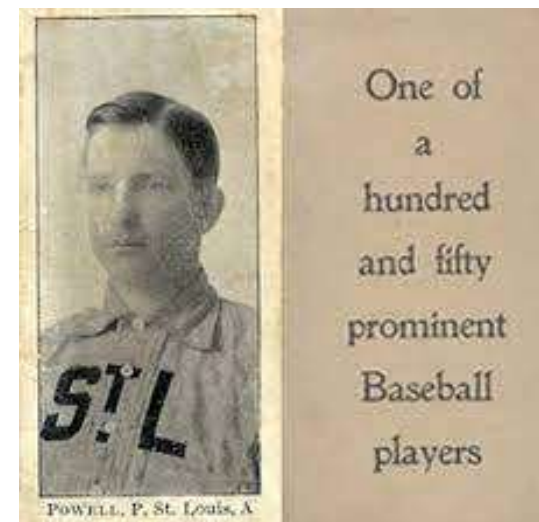
Three Doubles (10) : Moose Grimshaw (BR), Tim Jordan (WA), Kitty Bransfield (BS), *Player-Manager Lefty Meade (BE)*, Fred Clarke (MI), Jimmy Williams (ME), Ty Cobb (BU), John Titus (BS), Tom Corcoran (HH), Germany Schaefer (SO)

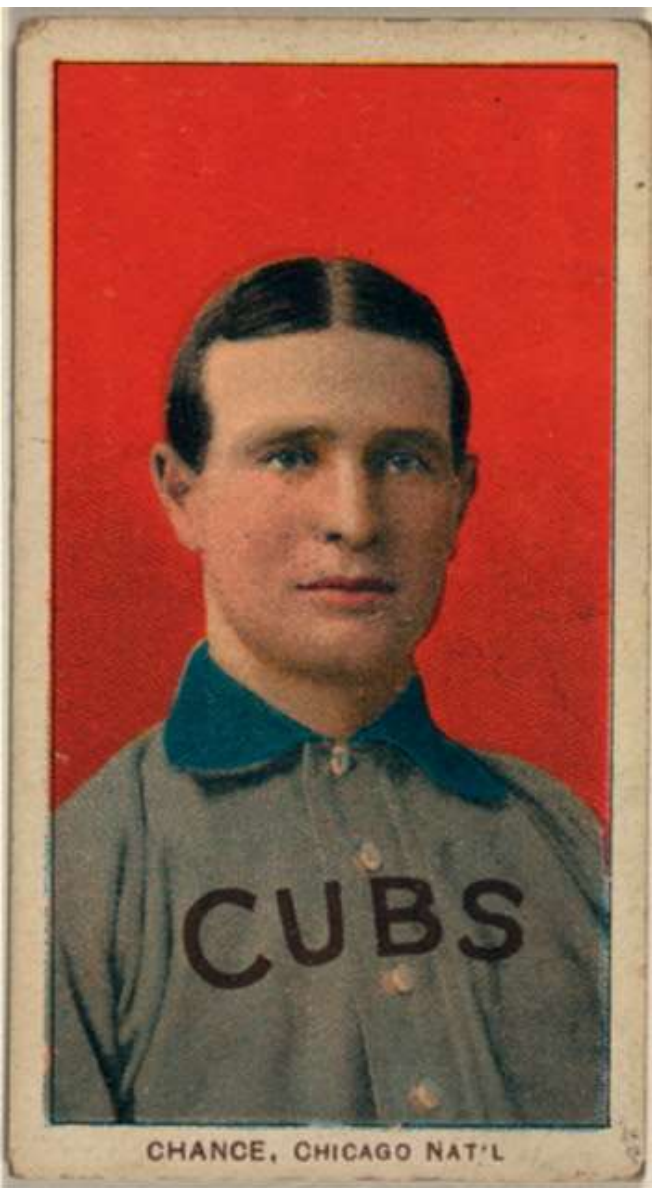
Two Doubles and a Triple (8) : Johnny Bates (GW), George Stone (BE), Patsy Dougherty (ME), Honus Wagner (WA), Nap LaJoie (BR), Harry Lumley (HH), *Pitcher Jack Powell (MI)*, Frank Isbell (WA)

A Double and Two Triples (2) : Jim Byrnes (SO) and Danny Murphy (SO)

Three Home Runs (1) : Charlie Hickman (BE)

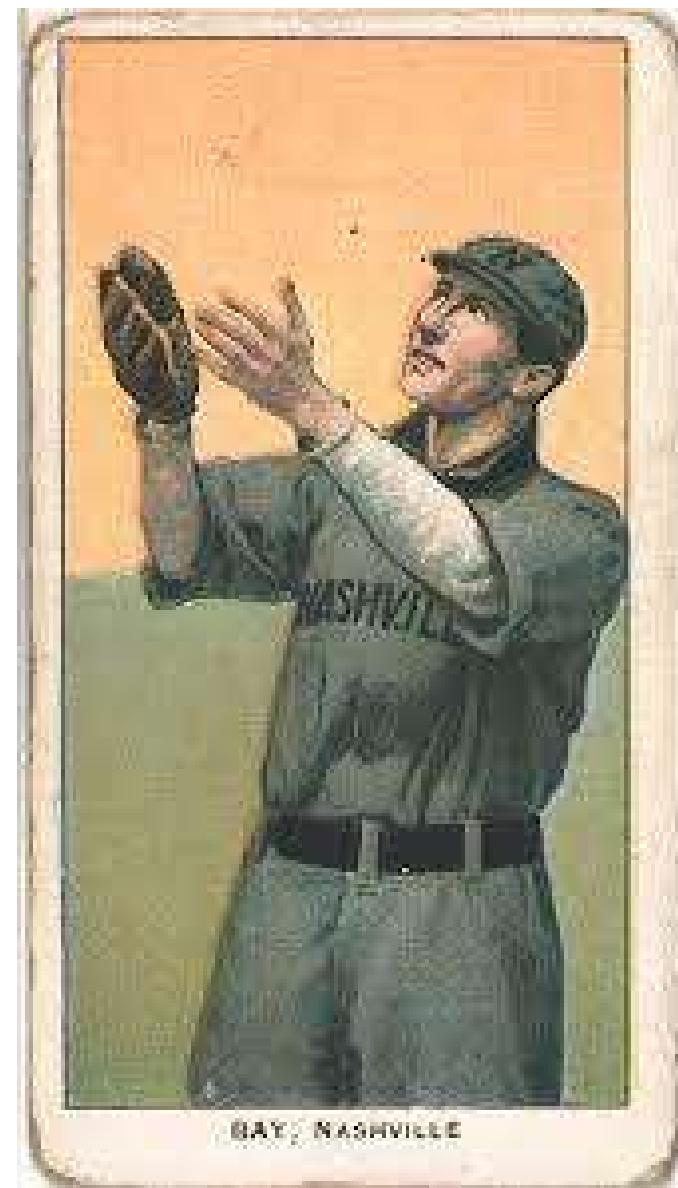
and the following four (4) notable performances





On June 1, Hereford's Harry Bay (right) went 5-for-5 in Grand Rapids, with three doubles and a triple to go with his single.

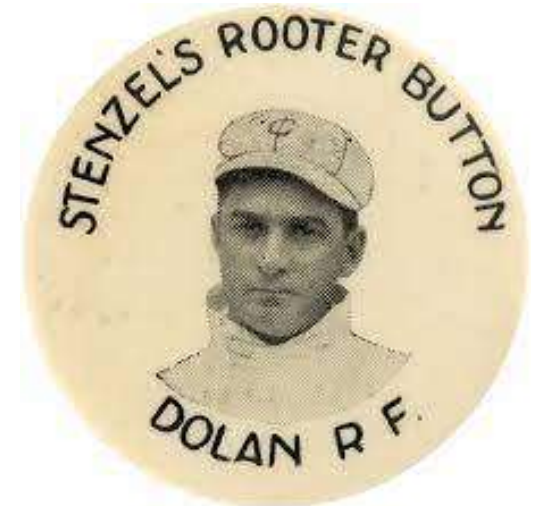
On June 15, Mexicali's Frank Chance (left) went 4-for-5 with a pair of doubles and a pair of triples and scoring all four times.





Cozy Dolan of Boston had two doubles and a triple on August 9 against Waukesha.

The next day, August 10, Cozy had a double and two triples in Mimosa!



Date	Inn	Home Team	Score	Visitor
4/13/1906	9	(Tm R) Hyde Park Vitamen	20 3	Wilderness Wraiths
5/10/1906	9	Hyde Park Vitamen	0 21	Boston Beaneaters (Tm R)
5/28/1906	9	South Starrucca Ainspans	4 22	Mimosa Mirthmakers (Tm R)
6/19/1906	9	Bergen Barflies	0 22	Bradenton Buckeyes (Tm R)
6/27/1906	9	Turin Mountaineers	3 20	Hereford Highlanders (Tm R)
7/11/1906	9	Wilderness Wraiths	3 21	Long Island Islanders (Tm R)
8/3/1906	9	(Tm R) Bergen Barflies	22 1	Mexicali Mallards
9/6/1906	9	Mexicali Mallards	7 20	Hyde Park Vitamen (Tm R)

Eight times this season, clubs scored 20 or more runs in one game. Only Hyde Park did it twice, but both Mexicali and Wilderness were victimized twice.



20

On only eight occasions this year, did teams strand more than 15 runners. Only two of those happened in regulation:

July 30: Bradenton left 19 on base while defeating Mexicali, 12-1

Aug 17: Waukesha stranded 16 while defeating South Starrucca, 15-0

The most left on in one game were the 20 runners that Turin left on base in a 25-inning game on April 30.

The Mountaineers left 18 aboard in an 11 inning game on August 16 and 16 on base in a 15 inning game on July 4

Long Island left 17 aboard in 14 innings on July 15 and 16 in 11 innings on September 5.

Waukesha's 17 stranded in 11 innings on June 20 completes the octet.



Forty-one (41) times a team cracked 20 or more base hits in one ball game this season. None had more than Long Island (29) on July 11 in Wilderness. That was the only game that the Islanders had 20+ hits

Others to do it included:

Bradenton (6): 20, 24, 24, 21, 20, 21

Bergen (5) : 20, 22, 21, 25, 20

Boston (5) : 20, 24, 26, 22, 20

Mexicali (5) : 20, 21, 22, 22, 20

Waukesha (5): 20, 23, 21, 23, 23

Mimosa (4) : 25, 21, 21, 21

Cleveland (2) : 22, 21

Hyde Park (2): 23, 23

Pittsburgh (2): 23, 20

South Starrucca (2): 21, 21

Grand Rapids (1) : 22

Wilderness (1) : 22





FALL AND DAYS

Thursday September 20, 1906

Three Days Left

Mahley Division

Long Island 96-55 ... #3

Boston 94-56 1.5

Hyde Park 94-57 2.0

McCorkindale Division

Cleveland 97-54 ... #2

Bergen 95-56 2.0

Kirwin Division

Mimosa 92-56 ... X

Seitz Division

Buffalo 86-65 ... #2

Hereford 84-67 2.0

Friday September 21, 1906

LI 6, SO 4

BS 3, HP 2

BR 10, CL 1

ME 7, BE 3

BU 14, WW 1

HH 2, TU 0

Two Days Left

Mahley Division

Long Island 97-55 ... #2

Boston 95-56 1.5

Hyde Park 94-58 3.0 eliminated

McCorkindale Division

Cleveland 97-55 ... #1

Bergen 95-57 2.0

Kirwin Division

Mimosa 92-57 ... X

Seitz Division

Buffalo 87-65 ... #1

Hereford 85-67 2.0

Saturday September 22, 1906

LI 1, SO 0

HP 4, BS 1

CL 9, BR 1

BE 4, ME 1 (10)

BU 13, WW 0

HH 5, TU 4

One Day Left

Mahley Division

Long Island 98-55 ... X Clinched

Boston 95-57 2.5

McCorkindale Division

Cleveland 98-55 ... X Clinched

Bergen 96-57 2.0

Kirwin Division

Mimosa 93-57 ... X

Seitz Division

Buffalo 88-65 ... X Clinched

Hereford 86-67 2.0

Sunday Sept 23, 1906



U-TCB907 - TCBA Origins 1906 MLB - Standings on Sep. 23, 1906

	W	L	PCT	GB	Mg #	S
TCBA Origins 1906 MLB						
Don Mahley Division						
Long Island Islanders	99	55	.643	-		X
Hyde Park Vitamen	96	58	.623	3.0		-
Boston Beaneaters	95	58	.621	3.5		-
South Starrucca Ainspans	51	103	.331	48.0		-
Stu McCorkindale Division						
Cleveland Naps	99	55	.643	-		X
Bergen Barflies	97	57	.630	2.0		-
Mexicali Mallards	75	79	.487	24.0		-
Bradenton Buckeyes	58	95	.379	40.5		-
Bill Kirwin Division						
Mimosa Mirthmakers	93	58	.616	-		X
Waukesha Freeman	85	69	.552	9.5		-
Grand Rapids Wolverines	46	107	.301	48.0		-
Pittsburgh Rebels	44	110	.286	50.5		-
Richard Seitz Division						
Buffalo Mules	89	65	.578	-		X
Hereford Highlanders	87	67	.565	2.0		-
Wilderness Wraiths	72	82	.468	17.0		-
Turin Mountaineers	43	111	.279	46.0		-

FINAL STANDINGS



16 Teams	AVG	OBP	SLG	G	AB	H	2B	3B	HR	R	R/G	SO	BB	LOB	SB	CS	SBP
Bergen Barflies	.269	.330	.358	154	5386	1448	189	76	46	774	5.0	660	441	1149	109	53	67.3
Cleveland Naps	.259	.325	.318	154	5284	1369	164	55	13	679	4.4	629	477	1175	172	70	71.1
Waukesha Freeman	.259	.324	.317	154	5306	1374	185	43	12	720	4.7	617	474	1157	186	56	76.9
Mimosa Mirthmakers	.257	.317	.315	151	5089	1309	164	49	10	643	4.3	609	413	1063	131	59	68.9
Mexicali Mallards	.252	.319	.314	154	5326	1344	235	35	7	688	4.5	700	501	1141	162	72	69.2
Bradenton Buckeyes	.251	.313	.319	153	5374	1351	192	71	10	684	4.5	644	437	1173	111	48	69.8
Buffalo Mules	.251	.319	.326	154	5220	1308	221	66	14	700	4.5	625	506	1152	187	65	74.2
Boston Beaneaters	.250	.316	.314	153	5273	1320	199	54	10	722	4.7	589	470	1149	170	65	72.3
Hereford Highlanders	.249	.314	.324	154	5378	1341	201	53	32	720	4.7	702	460	1165	135	40	77.1
Long Island Islanders	.244	.311	.305	154	5183	1267	156	70	6	649	4.2	589	465	1103	172	64	72.9
Hyde Park Vitamen	.243	.304	.312	154	5257	1279	202	53	18	670	4.4	651	439	1051	244	109	69.1
Wilderness Wraiths	.242	.305	.300	154	5354	1295	180	45	14	620	4.0	708	447	1197	143	40	78.1
South Starrucca Ainspans	.226	.288	.289	154	5264	1191	182	68	4	540	3.5	592	438	1122	114	34	77.0
Turin Mountaineers	.224	.281	.287	154	5306	1188	204	52	9	495	3.2	691	419	1144	109	39	73.6
Grand Rapids Wolverines	.223	.286	.288	153	5176	1155	168	68	11	528	3.5	640	403	1069	86	28	75.4
Pittsburgh Rebels	.205	.268	.252	154	5085	1043	145	42	3	435	2.8	718	373	1029	146	55	72.6
TCBA Origins 1906 MLB	.244	.308	.309	1229	84261	20582	2987	900	219	10267	8.4	10364	7163	18039	2377	897	72.6

Bergen led in hitting (.269), on-base percentage (.330), slugging (.358), scoring (5.0 rpg) and home runs (46).

Mexicali had the most doubles (235) but the Barflies had the most triples (76)

Buffalo drew a league best 506 bases on balls (Mexicali was 2nd with 501)

Hyde Park stole a league high 244 bases, but were thrown out the most often (109) as well.

Wilderness was the most successful (78.1) at stealing bases, but left a league high 1,197 runners on base.

Mimosa, with three rainouts not made up, played the fewest games, while shortening the seasons of Bradenton, Boston and Grand Rapids by one game each.

The 10 players with the highest Batting Average

Name	Tm	Lg	AVG	PA
LAJOIE, N.	BR	TCBA	.386	651
STONE, G.	BE	TCBA	.355	682
STEINFELDT, H.	CL	TCBA	.344	625
CHASE, H.	HP	TCBA	.340	640
WAGNER, H.	WA	TCBA	.333	621
CHANCE, F.	ME	TCBA	.322	573
TURNER, T.	BS	TCBA	.318	652
LUMLEY, H.	HH	TCBA	.314	548
STAHL, C.	ME	TCBA	.312	647
DAVIS, H.	HH	TCBA	.309	634

The 10 players with the highest Slugging Average

Name	Tm	Lg	SLG	PA
LAJOIE, N.	BR	TCBA	.499	651
STONE, G.	BE	TCBA	.498	682
DAVIS, H.	HH	TCBA	.493	634
STEINFELDT, H.	CL	TCBA	.456	625
WAGNER, H.	WA	TCBA	.437	621
CHASE, H.	HP	TCBA	.416	640
LUMLEY, H.	HH	TCBA	.410	548
CRAWFORD, S.	GW	TCBA	.409	620
DEVLIN, A.	GW	TCBA	.408	607
MAGEE, S.	BU	TCBA	.405	571

The 10 players with the highest On Base Percentage

Name	Tm	Lg	OBP	PA
CHANCE, F.	ME	TCBA	.450	573
STEINFELDT, H.	CL	TCBA	.445	625
LAJOIE, N.	BR	TCBA	.434	651
WAGNER, H.	WA	TCBA	.424	621
STONE, G.	BE	TCBA	.418	682
HUGGINS, M.	WA	TCBA	.399	675
THOMAS, R.	LI	TCBA	.391	618
DEVLIN, A.	GW	TCBA	.389	607
JONES, F.	BU	TCBA	.384	602
DAVIS, H.	HH	TCBA	.379	634

The 10 players with the most Runs Created

Name	Tm	Lg	RC	PA
STONE, G.	BE	TCBA	131.5	682
LAJOIE, N.	BR	TCBA	126.8	651
STEINFELDT, H.	CL	TCBA	116.7	625
WAGNER, H.	WA	TCBA	111.7	621
DAVIS, H.	HH	TCBA	111.4	634
FLICK, E.	LI	TCBA	98.4	671
HUGGINS, M.	WA	TCBA	93.9	675
CHANCE, F.	ME	TCBA	93.4	573
DEVLIN, A.	GW	TCBA	92.1	607
CHASE, H.	HP	TCBA	90.3	640

The 13 players with the most Triples

Name	Tm	Lg	3B	PA
FLICK, E.	LI	TCBA	18	671
CRAWFORD, S.	GW	TCBA	17	620
SHECKARD, J.	HP	TCBA	15	644
HEMPHILL, C.	CL	TCBA	14	670
BENNETT, P.	BU	TCBA	13	660
CONROY, W.	HP	TCBA	12	599
STONE, G.	BE	TCBA	12	682

6 players tied at 11

The 10 players with the most Home Runs

Name	Tm	Lg	HR	PA
DAVIS, H.	HH	TCBA	18	634
STONE, G.	BE	TCBA	11	682
HICKMAN, C.	BE	TCBA	9	432
SEYBOLD, S.	BE	TCBA	7	455
Sibley, S.	WW	TCBA	7	621
Braun, R.	HP	TCBA	6	367
JORDAN, T.	WA	TCBA	6	492
BRAIN, D.	BE	TCBA	6	564
Pio, P.	TU	TCBA	6	587
SEYMOUR, C.	BR	TCBA	6	637

The 10 players with the most Walks

Name	Tm	Lg	BB	PA
THOMAS, R.	LI	TCBA	101	618
JONES, F.	BU	TCBA	97	602
CHANCE, F.	ME	TCBA	91	573
HUGGINS, M.	WA	TCBA	87	675
HARTSEL, T.	BS	TCBA	82	679
BRESNAHAN, R.	WW	TCBA	76	456
MCLEAN, L.	TU	TCBA	76	607
SHECKARD, J.	HP	TCBA	74	644
DAHLEN, B.	GW	TCBA	73	582
TITUS, J.	BS	TCBA	72	600

The 10 players with the most Strikeouts

Name	Tm	Lg	SO	PA
Meade, L.	BE	TCBA	115	605
Sajdak, D.	GW	TCBA	111	609
Sibley, S.	WW	TCBA	111	621
Pio, P.	TU	TCBA	105	587
Sajdak, K.	WA	TCBA	94	421
Fiehl, S.	SO	TCBA	88	521
DOOLAN, M.	WW	TCBA	87	631
Keefe, A.	ME	TCBA	84	437
MCGANN, D.	PR	TCBA	84	558
KELLEY, J.	WW	TCBA	84	630

The 10 players with the most Runs Scored

Name	Tm	Lg	R	PA
CHANCE, F.	ME	TCBA	122	573
STONE, G.	BE	TCBA	121	682
WAGNER, H.	WA	TCBA	115	621
SHECKARD, J.	HP	TCBA	115	644
HUGGINS, M.	WA	TCBA	107	675
HARTSEL, T.	BS	TCBA	107	679
DAVIS, H.	HH	TCBA	104	634
LAJOIE, N.	BR	TCBA	102	651
SENTELL, P.	WW	TCBA	98	679
TURNER, T.	BS	TCBA	97	652

The 11 players with the most Runs Batted In

Name	Tm	Lg	RBI	PA
DAVIS, H.	HH	TCBA	133	634
SCHULTE, W.	HP	TCBA	106	616
STONE, G.	BE	TCBA	104	682
TURNER, T.	BS	TCBA	101	652
LAJOIE, N.	BR	TCBA	98	651
STAHL, C.	ME	TCBA	92	647
SEYBOLD, S.	BE	TCBA	87	455
CRAWFORD, S.	GW	TCBA	87	620
CONGALTON, B.	CL	TCBA	85	452

2 players tied at 84

The 10 players with the most Stolen Bases

Name	Tm	Lg	SB	ASB
EVERS, J.	CL	TCBA	46	57
HUGGINS, M.	WA	TCBA	46	59
FLICK, E.	LI	TCBA	45	58
SENTELL, P.	WW	TCBA	44	57
WAGNER, H.	WA	TCBA	42	50
MAGEE, S.	BU	TCBA	42	57
CHANCE, F.	ME	TCBA	42	65
TINKER, J.	PR	TCBA	39	49
SHANNON, S.	HP	TCBA	38	58
ISBELL, F.	WA	TCBA	37	52

The 11 players with the most Hits

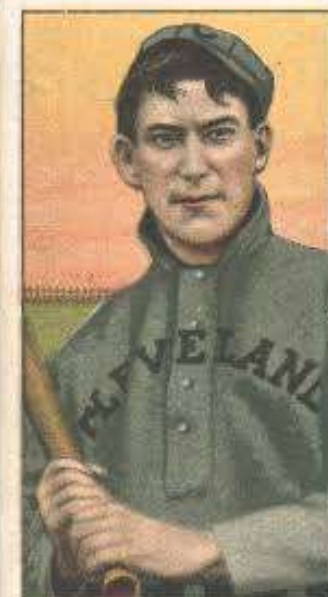
Name	Tm	Lg	H	PA
LAJOIE, N.	BR	TCBA	226	651
STONE, G.	BE	TCBA	214	682
CHASE, H.	HP	TCBA	201	640
TURNER, T.	BS	TCBA	191	652
STAHL, C.	ME	TCBA	180	647
KEELER, W.	WW	TCBA	180	684
HEMPHILL, C.	CL	TCBA	179	670
STEINFELDT, H.	CL	TCBA	178	625
HUGGINS, M.	WA	TCBA	178	675

2 players tied at 177

The 10 players with the most Doubles

Name	Tm	Lg	2B	PA
WAGNER, H.	WA	TCBA	45	621
LAJOIE, N.	BR	TCBA	44	651
DAVIS, H.	HH	TCBA	40	634
TURNER, T.	BS	TCBA	37	652
CRAWFORD, S.	GW	TCBA	36	620
WILLIAMS, J.	ME	TCBA	32	583
STAHL, C.	ME	TCBA	32	647
MAGEE, S.	BU	TCBA	31	571
SULLIVAN, B.	HP	TCBA	31	587
HOWARD, D.	WW	TCBA	31	611

ORIGINS Hitting Leaders



16 Teams	ERA	G	CG	SHO	QS	SV	IP	H	R	ER	HR	SO	BB	HB	WP	BK	OBA
Boston Beaneaters	2.24	153	69	25	99	20	1382.2	1102	481	344	7	681	406	55	33	0	.217
Long Island Islanders	2.26	154	91	23	104	16	1388.1	1059	448	348	5	558	377	37	21	1	.210
Hyde Park Vitamen	2.37	154	102	13	99	13	1415.0	1107	491	373	12	523	406	65	21	5	.211
Mimosa Mirthmakers	2.39	151	100	23	101	11	1355.1	1064	468	360	10	519	381	47	17	0	.214
Cleveland Naps	2.43	154	99	24	101	10	1399.1	1116	483	378	12	629	389	50	10	4	.218
Buffalo Mules	2.55	154	101	17	94	6	1375.2	1188	525	390	15	704	419	48	23	1	.231
Waukesha Freeman	2.59	154	96	19	89	10	1367.1	1170	562	394	17	583	384	63	12	2	.229
Bergen Barflies	2.63	154	106	16	84	6	1384.0	1161	596	404	8	766	406	34	27	3	.224
Hereford Highlanders	2.75	154	96	16	90	4	1391.1	1142	584	425	8	659	507	54	33	0	.222
Pittsburgh Rebels	3.41	154	115	9	65	3	1372.1	1408	732	520	22	728	488	65	35	4	.263
Mexicali Mallards	3.59	154	89	9	77	13	1395.2	1473	718	556	20	611	454	57	21	0	.270
Wilderness Wraiths	3.61	154	102	12	70	5	1404.2	1500	788	563	13	554	446	61	22	0	.268
South Starrucca Ainspans	3.74	154	88	5	59	6	1374.2	1464	789	572	15	685	514	71	26	0	.271
Bradenton Buckeyes	4.29	153	71	7	56	17	1380.1	1511	817	658	15	730	602	54	22	2	.277
Turin Mountaineers	4.30	154	86	8	55	2	1380.2	1570	922	660	26	681	457	80	20	0	.280
Grand Rapids Wolverines	4.38	153	54	9	62	7	1349.1	1547	863	656	14	753	527	67	31	1	.286
TCBA Origins 1906 MLB	3.09	1229	1465	235	1305	149	22116.2	20582	10267	7601	219	10364	7163	908	374	23	.244

Boston pitchers (2.24) edged Long Island (2.26) for the Team ERA title, throwing a league high 25 shutouts with a league best 20 saves. No team had more complete games than Pittsburgh (115) nor more quality starts than Long Island (104), who gave up only 5 home runs this year (Turin allowed 26).

Bergen hurlers struck out 766 hitters (Grand Rapids was 2nd with 753) but Bradenton walked 602 opponents (527 was 2nd worse (Grand Rapids again)). Turin hit 80 opponents while Pittsburgh made 35 wild pitches. Hyde Park was charged with 5 Balks, but held opponents to a .211 batting average, second only to Long Island (.210).

best Wins - Losses

Name	Tm	Lg	W - L	PCT
BROWN, T.	BE	TCBA	29-4	.879
WILLIS, V.	HH	TCBA	26-13	.667
ORTH, A.	HP	TCBA	24-14	.632
TAYLOR, J.	CL	TCBA	23-7	.767
PFIESTER, J.	CL	TCBA	23-9	.719
SPARKS, T.	LI	TCBA	23-12	.657
PELTY, B.	HP	TCBA	22-8	.733
STRICKLETT, E.	BU	TCBA	22-9	.710
BENDER, C.	BU	TCBA	22-10	.688

7 players tied at 21

The 10 players with the lowest Earned Run Average

Name	Tm	Lg	ERA	IP
PATTERSON, R.	BS	TCBA	1.22	169.2
WHITE, D.	LI	TCBA	1.48	219.0
JOSS, A.	WA	TCBA	1.48	267.1
PELTY, B.	HP	TCBA	1.54	292.1
BROWN, T.	BE	TCBA	1.64	302.0
TAYLOR, D.	BS	TCBA	1.72	241.1
PFIESTER, J.	CL	TCBA	1.75	283.2
GLADE, F.	BS	TCBA	1.77	295.2
EWING, B.	LI	TCBA	1.77	259.0
SPARKS, T.	LI	TCBA	1.80	319.2

The 10 players with the most Innings Pitched

Name	Tm	Lg	IP	G
MCGINNITY, J.	WW	TCBA	353.1	41
HESS, O.	CL	TCBA	338.1	42
WILLIS, V.	HH	TCBA	337.2	43
PFEFFER, B.	TU	TCBA	331.2	42
RHOADS, B.	HH	TCBA	320.1	41
SPARKS, T.	LI	TCBA	319.2	41
WALSH, E.	BS	TCBA	317.2	47
LINDAMAN, V.	WW	TCBA	315.2	38
CHESBRO, J.	BE	TCBA	311.0	39
ORTH, A.	HP	TCBA	308.2	42

The 10 players with the most Games Started

Name	Tm	Lg	GS	IP-s
HESS, O.	CL	TCBA	42	338.1
PFEFFER, B.	TU	TCBA	42	331.2
MCGINNITY, J.	WW	TCBA	40	352.1
WILLIS, V.	HH	TCBA	39	332.1
SPARKS, T.	LI	TCBA	38	317.0
LINDAMAN, V.	WW	TCBA	38	315.2
CHESBRO, J.	BE	TCBA	38	310.2
WALSH, E.	BS	TCBA	38	305.2
MCINTIRE, H.	ME	TCBA	38	303.0
FALKENBERG, C.	SO	TCBA	38	293.2

The 13 players with the most Complete Games

Name	Tm	Lg	CG	GS
LEEVEER, S.	PR	TCBA	30	32
WADDELL, R.	PR	TCBA	30	36
MCGINNITY, J.	WW	TCBA	30	40
YOUNG, I.	PR	TCBA	29	34
RHOADS, B.	HH	TCBA	29	35
WILLIS, V.	HH	TCBA	29	39
MULLIN, G.	SO	TCBA	28	37
DUGGLEBY, B.	HP	TCBA	27	33

5 players tied at 26

The 10 players with the most Quality Starts

Name	Tm	Lg	QS	GS
WILLIS, V.	HH	TCBA	31	39
PELTY, B.	HP	TCBA	28	33
SPARKS, T.	LI	TCBA	28	38
PFIESTER, J.	CL	TCBA	27	33
WALSH, E.	BS	TCBA	27	38
HESS, O.	CL	TCBA	26	42
ALTROCK, N.	MI	TCBA	25	32
DUGGLEBY, B.	HP	TCBA	24	33
TAYLOR, J.	CL	TCBA	24	34
GLADE, F.	BS	TCBA	24	36

The 10 players with the most Shutouts

Name	Tm	Lg	SHO	GS
WALSH, E.	BS	TCBA	8	38
JOSS, A.	WA	TCBA	7	31
PFIESTER, J.	CL	TCBA	7	33
SPARKS, T.	LI	TCBA	7	38
WHITE, D.	LI	TCBA	6	27
EWING, B.	LI	TCBA	6	28
REULBACH, E.	MI	TCBA	6	28
BERNHARD, B.	CL	TCBA	6	29
BENDER, C.	BU	TCBA	6	32
HESS, O.	CL	TCBA	6	42

ORIGINS Pitching Leaders

The 11 players with the most Strikeouts

Name	Tm	Lg	SO	IP
WADDELL, R.	PR	TCBA	257	300.0
BENDER, C.	BU	TCBA	224	276.0
FALKENBERG, C.	SO	TCBA	206	293.2
WALSH, E.	BS	TCBA	199	317.2
PFEFFER, B.	TU	TCBA	199	331.2
BEEBE, F.	GW	TCBA	198	251.2
HESS, O.	CL	TCBA	179	338.1
AMES, R.	BR	TCBA	176	199.0
YOUNG, C.	SO	TCBA	173	303.0

2 players tied at 170



16 Teams	FLD	G	PO	A	E	DP	TP	PB	OSB	OCS	OSBP	OSBA	DER	UER	UERP
Long Island Islanders	.972	154	4165	1973	179	87	0	17	124	59	67.8	.804	.743	100	22.3
Cleveland Naps	.969	154	4198	1885	197	142	0	14	80	44	64.5	.515	.729	105	21.7
Mimosa Mirthmakers	.968	151	4066	1898	194	101	0	10	134	50	72.8	.890	.738	108	23.1
Boston Beaneaters	.968	153	4148	1916	202	98	0	25	141	62	69.5	.918	.725	137	28.5
Buffalo Mules	.968	154	4127	1856	200	119	0	22	152	52	74.5	.994	.710	135	25.7
Mexicali Mallards	.967	154	4187	2048	216	133	0	13	98	42	70.0	.632	.677	162	22.6
Hyde Park Vitamen	.966	154	4245	2039	223	98	0	15	91	48	65.5	.579	.739	118	24.0
Bradenton Buckeyes	.965	153	4141	1940	221	128	0	31	142	63	69.3	.926	.658	159	19.5
Waukesha Freeman	.962	154	4102	1927	235	112	0	19	100	43	69.9	.658	.715	168	29.9
Hereford Highlanders	.961	154	4174	1875	245	123	0	19	135	73	64.9	.873	.716	159	27.2
Grand Rapids Wolverines	.961	153	4048	1863	240	141	0	28	177	51	77.6	1.181	.642	207	24.0
Pittsburgh Rebels	.960	154	4117	1917	251	126	0	21	206	58	78.0	1.351	.670	212	29.0
Wilderness Wraiths	.958	154	4214	2021	272	117	0	27	138	53	72.3	.884	.673	225	28.6
Bergen Barflies	.956	154	4152	1824	274	92	0	10	189	58	76.5	1.229	.703	192	32.2
South Starrucca Ainspans	.954	154	4124	1962	295	144	0	18	227	78	74.4	1.486	.657	217	27.5
Turin Mountaineers	.949	154	4142	1918	326	106	0	30	243	63	79.4	1.584	.647	262	28.4
TCBA Origins 1906 MLB	.963	1229	66350	30862	3770	1867	0	319	2377	897	72.6	.967	.695	2666	26.0

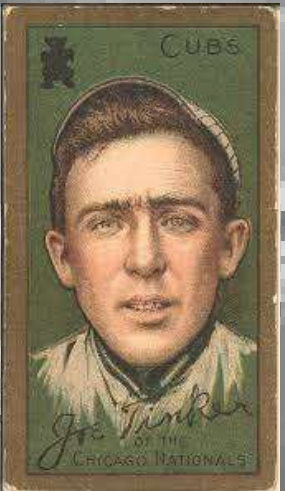
Long Island fielders led the league with a .972 fielding average, committing “just” 179 errors (Turin made 326 for a .949 average). South Starrucca led the league with 144 double plays. There were no triple plays. Bradenton’s 31 passed balls were a league high. Turin allowed 243 stolen bases while South Starrucca caught 78 base stealers.

Mexicali’s 2,048 assists just edged Hyde Park (2,039) with Wilderness (2,021) also topping 2,000. Hyde Park’s 4,245 put outs made a 2nd place finisher of Wilderness fielders (4,214)

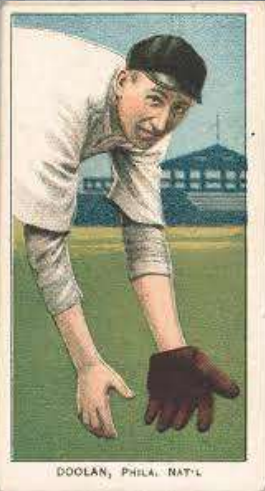
1907 GOLD GLOVE WINNERS: P-Bob Ewing, LI C-Jack Warner, MI 1B-Frank Chance, ME 2B-Nap LaJoie, BR 3B-Art Devlin, GW SS-Mickey Doolan, WW and Joe Tinker, PR LF-Sherry Magee, BU CF-Wildfire Schulte, HP RF-Elmer Flick, LI



Magee, c. f. Phila Nat'l



Joe Tinker
OF THE
CHICAGO NATIONALS



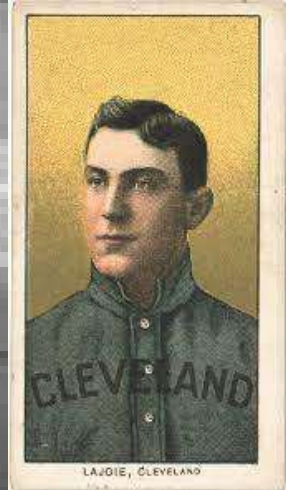
DOOLAN, PHILA. NAT'L



SCHULTE, CHICAGO NAT'L



Flick, CLEVELAND.



LAJOIE, CLEVELAND



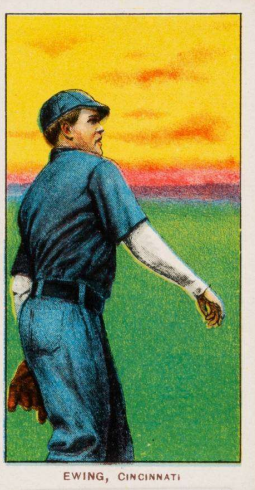
CHANCE, CHICAGO NAT'L



Devlin, 3b New York Nat'l



J. WARNER, C, New York, N



EWING, CINCINNATI

A close-up, slightly blurred image of a baseball, showing its characteristic red stitching on a light-colored leather surface. The ball is positioned centrally behind the text.

BASEBALL
PLAYOFFS

1907

SEMI

FINAL

Long Island advances to the World Series for the 4th straight year as Mimosa hits only .156



U-TCB907 - TCBA Origins 1906 MLB Round 1 - Game Summaries

5 Games Played

Date	No.	Team	R	H	E	G Sc	Starters	Decisions	Save	
09/30/06	5	Long Island Islanders	4	4	0	86	D. WHITE	W, D. WHITE	None	
17:44m	5	Mimosa Mirthmakers	0	2	4	74	E. REULBACH	L, E. REULBACH		
09/29/06	4	Long Island Islanders	8	8	5	12	58	T. SPARKS	W, C. LUNDGREN	None
41:21m	4	Mimosa Mirthmakers	5	7	3	48	C. PATTEN	L, C. CHECH		
09/28/06	3	Long Island Islanders	2	7	4	47	F. OWEN	L, F. OWEN		
22:25m	3	Mimosa Mirthmakers	6	9	0	69	N. ALTROCK	W, N. ALTROCK	None	
09/26/06	2	Mimosa Mirthmakers	4	5	1	38	J. POWELL	L, J. POWELL		
26:00m	2	Long Island Islanders	5	13	1	66	D. WHITE	W, D. WHITE	None	
09/25/06	1	Mimosa Mirthmakers	4	4	2	34	E. REULBACH	L, E. REULBACH		
21:39m	1	Long Island Islanders	8	11	3	74	T. SPARKS	W, T. SPARKS	None	

U-TCB907 - TCBA Origins 1906 MLB Round 1 - Club Pitching

2 Teams	ERA	G	CG	SHO	QS	SV	IP	H	R	ER	HR	SO	BB	HB	W
Long Island Islanders	1.15	5	3	1	1	0	47.0	27	19	6	0	15	8	2	
Mimosa Mirthmakers	2.93	5	2	0	1	0	46.0	43	27	15	0	23	14	2	
TCBA Origins 1906 MLB Round 1	2.03	5	5	1	2	0	93.0	70	46	21	0	38	22	4	

U-TCB907 - TCBA Origins 1906 MLB Round 1 - Club Batting

2 Teams	AVG	OBP	SLG	G	AB	H	2B	3B	HR	R	R/G	SO	BB	LOB
Long Island Islanders	.250	.311	.331	5	172	43	8	3	0	27	5.4	23	14	30
Mimosa Mirthmakers	.156	.199	.191	5	173	27	4	1	0	19	3.8	15	8	27
TCBA Origins 1906 MLB Round 1	.203	.255	.261	5	345	70	12	4	0	46	9.2	38	22	57

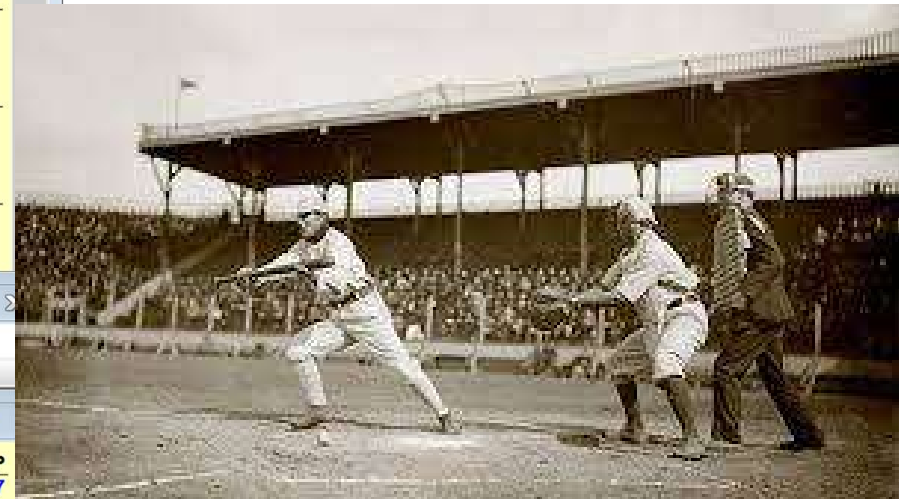
U-TCB907 - TCBA Origins 1906 MLB Round 1 - Club Fielding

2 Teams	FLD	G	PO	A	E	DP	TP	PB	OSB	OCS	OSBP	OSBA	DER
Mimosa Mirthmakers	.955	5	138	75	10	2	0	0	5	2	71.4	.978	.678
Long Island Islanders	.941	5	141	67	13	3	0	1	5	1	83.3	.957	.772
TCBA Origins 1906 MLB Round 1	.948	5	279	142	23	5	0	1	10	3	76.9	.968	.726

5 Games Played

Date	No.	Team	R	H	E	G Sc	Starters	Decisions	Save
09/30/06	5	Cleveland Naps	6	11	0	70	J. PFIESTER	W, J. PFIESTER	None
17:57m	5	Buffalo Mules	2	8	2	34	E. STRICKLETT	L, E. STRICKLETT	
Date	No.	Team	R	H	E	G Sc	Starters	Decisions	Save
09/29/06	4	Cleveland Naps	8	13	0	59	B. BERNHARD	W, B. BERNHARD	None
19:39m	4	Buffalo Mules	2	12	4	37	C. BENDER	L, C. BENDER	
Date	No.	Team	R	H	E	G Sc	Starters	Decisions	Save
09/28/06	3	Cleveland Naps	4	10	2	69	O. HESS	W, O. HESS	None
14:51m	3	Buffalo Mules	1	7	0	59	B. HOGG	L, B. HOGG	
Date	No.	Team	R	H	E	G Sc	Starters	Decisions	Save
09/26/06	2	Buffalo Mules	0	2	3	33	C. BENDER	L, C. BENDER	
16:19m	2	Cleveland Naps	6	8	1	88	J. PFIESTER	W, J. PFIESTER	None
Date	No.	Team	R	H	E	G Sc	Starters	Decisions	Save
09/25/06	1	Buffalo Mules	7	11	2	61	D. PHILLIPPE	W, D. PHILLIPPE	None
29:53m	1	Cleveland Naps	3	9	3	41	B. BERNHARD	L, B. BERNHARD	

Buffalo wins the opener behind Deacon Phillippe, but it's all Cleveland from there, as the Naps head to their 2nd World Series.



StatMaster

Select Reports Multi Options Window Help

U-TCB907 - Cleveland Naps - Summary

Batting	AVG	OBP	SLG	G	AB	H	2B	3B	HR	R	R/G	SO	BB	LOB	SB	CS	SBP
Cleveland Naps	.282	.347	.370	5	181	51	5	4	1	27	5.4	24	14	42	6	1	85.7

Pitching	ERA	G	CG	SHO	QS	SV	IP	H	R	ER	HR	SO	BB	HB	WP	BK	OBA
Cleveland Naps	1.80	5	4	1	4	0	45.0	40	12	9	1	26	11	0	0	0	.233

Fielding	FLD	G	PO	A	E	DP	TP	PB	OSB	OCS	OSBP	OSBA	DER	UER	UERP
Cleveland Naps	.970	5	135	57	6	5	0	0	3	0	100.0	.600	.704	3	25.0

U-TCB907 - Buffalo Mules - Summary

Batting	AVG	OBP	SLG	G	AB	H	2B	3B	HR	R	R/G	SO	BB	LOB	SB	CS	SBP
Buffalo Mules	.233	.279	.308	5	172	40	8	1	1	12	2.4	26	11	37	3	0	100.0

Pitching	ERA	G	CG	SHO	QS	SV	IP	H	R	ER	HR	SO	BB	HB	WP	BK	OBA
Buffalo Mules	3.48	5	1	0	2	0	44.0	51	27	17	1	24	14	4	1	0	.282

Fielding	FLD	G	PO	A	E	DP	TP	PB	OSB	OCS	OSBP	OSBA	DER	UER	UERP
Buffalo Mules	.946	5	132	61	11	3	0	0	6	1	85.7	1.227	.633	10	37.0

1907



7 Games Played

Date	No.	Team	R	H	E	Inn	G Sc	Starters	Decisions	Save
10/13/06	7	Long Island Islanders	1	6	3	10	69	D. WHITE	L, D. WHITE	
19:06m	7	Cleveland Naps	2	6	3		79	J. PFIESTER	W, J. PFIESTER	None
10/12/06	6	Long Island Islanders	1	5	4		56	T. SPARKS	L, T. SPARKS	
18:41m	6	Cleveland Naps	4	6	0		74	J. TAYLOR	W, J. TAYLOR	None
10/10/06	5	Cleveland Naps	5	6	0		46	O. HESS	L, B. BERNHARD	
31:03m	5	Long Island Islanders	7	9	1		35	D. WHITE	W, B. EWING	F. OWEN
10/09/06	4	Cleveland Naps	2	6	1		78	J. PFIESTER	W, J. PFIESTER	None
17:51m	4	Long Island Islanders	1	5	0		61	T. SPARKS	L, T. SPARKS	
10/08/06	3	Cleveland Naps	5	8	1		41	J. TAYLOR	L, J. TAYLOR	
24:36m	3	Long Island Islanders	7	10	3		44	F. OWEN	W, C. LUNDGREN	B. EWING
10/06/06	2	Long Island Islanders	2	10	2		84	D. WHITE	W, D. WHITE	None
24:22m	2	Cleveland Naps	0	3	0		58	O. HESS	L, O. HESS	
10/05/06	1	Long Island Islanders	4	9	1		48	T. SPARKS	L, T. SPARKS	
20:53m	1	Cleveland Naps	5	10	1		55	J. PFIESTER	W, J. PFIESTER	B. BERNHARD

StatMaster - [U-TCB907 - TCBA Origins 1906 MLB World Series - Summary]

Select Reports Multi Options Window Help

Batting	AVG	OBP	SLG	G	AB	H	2B	3B	HR	R	R/G	SO	BB	LOB	SB	CS	SBP
TCBA Origins 1906 MLB	.219	.277	.289	7	453	99	16	8	0	46	6.6	43	32	89	16	5	76.2
Pitching	ERA	G	CG	SHO	QS	SV	IP	H	R	ER	HR	SO	BB	HB	WP	BK	OBA
TCBA Origins 1906 MLB	2.55	7	6	1	8	3	123.1	99	46	35	0	43	32	7	2	0	.219
Fielding	FLD	G	PO	A	E	DP	TP	PB	OSB	OCS	OSBP	OSBA	DER	UER	UERP		
TCBA Origins 1906 MLB	.965	7	370	180	20	9	0	1	16	5	76.2	1.168	.731	11	23.9		

Jack Pfiester and Doc White each made three starts for their teams, including the decisive 7th game, which went into extra innings before the Naps broke a 3-year Islander reign to win their 2nd championship on a Fred Tenney single in the 10th inning.



U-TCB907 - TCBA Origins 1906 MLB World Series - Club Batting

2 Teams	AVG	OBP	SLG	G	AB	H	2B	3B	HR	R	R/G	SO	BB	LOB	SB	CS	SBP
Long Island Islanders	.238	.281	.291	7	227	54	6	3	0	23	3.3	20	13	43	6	2	75.0
Cleveland Naps	.199	.273	.288	7	226	45	10	5	0	23	3.3	23	19	46	10	3	76.9
TCBA Origins 1906 MLB World Series	.219	.277	.289	7	453	99	16	8	0	46	6.6	43	32	89	16	5	76.2

U-TCB907 - TCBA Origins 1906 MLB World Series - Club Pitching

2 Teams	ERA	G	CG	SHO	QS	SV	IP	H	R	ER	HR	SO	BB	HB	WP	BK	OBA
Long Island Islanders	2.20	7	3	1	3	2	61.1	45	23	15	0	23	19	4	1	0	.199
Cleveland Naps	2.90	7	3	0	5	1	62.0	54	23	20	0	20	13	3	1	0	.238
TCBA Origins 1906 MLB World Series	2.55	7	6	1	8	3	123.1	99	46	35	0	43	32	7	2	0	.219

U-TCB907 - TCBA Origins 1906 MLB World Series - Club Fielding

2 Teams	FLD	G	PO	A	E	DP	TP	PB	OSB	OCS	OSBP	OSBA	DER	UER	UERP
Cleveland Naps	.979	7	186	97	6	6	0	0	6	2	75.0	.871	.728	3	13.0
Long Island Islanders	.950	7	184	83	14	3	0	1	10	3	76.9	1.467	.734	8	34.8
TCBA Origins 1906 MLB World Series	.965	7	370	180	20	9	0	1	16	5	76.2	1.168	.731	11	23.9

U-TCB907 - TCBA Origins 1906 MLB World Series - Pitching Leaders

The 11 players with the best Wins - Losses					The 8 players with the highest Win Percentage				
Name	Tm	Lg	W - L	PCT	Name	Tm	Lg	PCT	D
PFIESTER, J.	CL	TCBA	3-0	1.000	PFIESTER, J.	CL	TCBA	1.000	
EWING, B.	LI	TCBA	1-0	1.000	EWING, B.	LI	TCBA	1.000	
LUNDGREN, C.	LI	TCBA	1-0	1.000	LUNDGREN, C.	LI	TCBA	1.000	
TAYLOR, J.	CL	TCBA	1-1	.500	TAYLOR, J.	CL	TCBA	.500	
WHITE, D.	LI	TCBA	1-1	.500	WHITE, D.	LI	TCBA	.500	
6 players tied at 0					SPARKS, T.	LI	TCBA	.000	
					BERNHARD, B.	CL	TCBA	.000	
					HESS, O.	CL	TCBA	.000	

The 5 players with the lowest Earned Run Average					The 5 players with the most Earned Runs Prevented				
Name	Tm	Lg	ERA	IP	Name	Tm	Lg	ERPT	D
PFIESTER, J.	CL	TCBA	1.63	27.2	PFIESTER, J.	CL	TCBA	2.9	2
SPARKS, T.	LI	TCBA	1.96	23.0	SPARKS, T.	LI	TCBA	1.5	2
TAYLOR, J.	CL	TCBA	2.30	15.2	WHITE, D.	LI	TCBA	.5	2
WHITE, D.	LI	TCBA	2.35	23.0	TAYLOR, J.	CL	TCBA	.4	1
HESS, O.	CL	TCBA	2.35	11.0	HESS, O.	CL	TCBA	1.0	1



Jack Pfiester had 3 wins with a 1.63 ERA to lead the Naps to their 2nd Origins Championship.

The 10 players with the highest Batting Average

Name	Tm	Lg	AVG	PA
FLICK, E.	LI	TCBA	.357	29
EVERS, J.	CL	TCBA	.321	29
THOMAS, R.	LI	TCBA	.320	30
BROWNE, G.	LI	TCBA	.259	29
GRIMSHAW, M.	LI	TCBA	.250	28
SCHLEI, A.	CL	TCBA	.240	28
HEMPHILL, C.	CL	TCBA	.222	28
HAYDEN, J.	CL	TCBA	.217	25
TENNEY, F.	CL	TCBA	.185	31
STEINFELDT, H.	CL	TCBA	.185	29

The 10 players with the highest Slugging Average

Name	Tm	Lg	SLG
EVERS, J.	CL	TCBA	.500
SCHLEI, A.	CL	TCBA	.480
FLICK, E.	LI	TCBA	.429
GRIMSHAW, M.	LI	TCBA	.429
THOMAS, R.	LI	TCBA	.400
HAYDEN, J.	CL	TCBA	.348
HEMPHILL, C.	CL	TCBA	.296
BROWNE, G.	LI	TCBA	.259
TENNEY, F.	CL	TCBA	.222
STEINFELDT, H.	CL	TCBA	.185

The 10 players with the highest On Base Percentage

Name	Tm	Lg	OBP	PA
FLICK, E.	LI	TCBA	.379	29
THOMAS, R.	LI	TCBA	.333	30
EVERS, J.	CL	TCBA	.321	29
SCHLEI, A.	CL	TCBA	.321	28
TENNEY, F.	CL	TCBA	.290	31
BROWNE, G.	LI	TCBA	.286	29
HAYDEN, J.	CL	TCBA	.280	25
GRIMSHAW, M.	LI	TCBA	.250	28
HEMPHILL, C.	CL	TCBA	.250	28
STEINFELDT, H.	CL	TCBA	.241	29

The 10 players with the most Runs Created

Name	Tm	Lg	RC
FLICK, E.	LI	TCBA	4.8
EVERS, J.	CL	TCBA	4.3
SCHLEI, A.	CL	TCBA	4.3
THOMAS, R.	LI	TCBA	3.4
GRIMSHAW, M.	LI	TCBA	3.1
COURTNEY, E.	LI	TCBA	3.1
ALPERMAN, W.	LI	TCBA	2.8
HEMPHILL, C.	CL	TCBA	2.5
BROWNE, G.	LI	TCBA	2.3
TENNEY, F.	CL	TCBA	2.1

The 11 players with the most Runs Scored

Name	Tm	Lg	R	PA
SCHLEI, A.	CL	TCBA	5	28
EVERS, J.	CL	TCBA	5	29
GRIMSHAW, M.	LI	TCBA	4	28
FLICK, E.	LI	TCBA	4	29
TENNEY, F.	CL	TCBA	4	31
COURTNEY, E.	LI	TCBA	3	13
HEMPHILL, C.	CL	TCBA	3	28

4 players tied at 2

The 10 players with the most Runs Batted In

Name	Tm	Lg	RBI
BROWNE, G.	LI	TCBA	4
EVERS, J.	CL	TCBA	4
THOMAS, R.	LI	TCBA	4
GRAHAM, C.	LI	TCBA	3
SCHLEI, A.	CL	TCBA	3
Hobbs, R.	CL	TCBA	2
COURTNEY, E.	LI	TCBA	2
CASEY, D.	LI	TCBA	2
HAYDEN, J.	CL	TCBA	2
GRIMSHAW, M.	LI	TCBA	2

The 11 players with the most Hits

Name	Tm	Lg	H	PA
FLICK, E.	LI	TCBA	10	29
EVERS, J.	CL	TCBA	9	29
THOMAS, R.	LI	TCBA	8	30
GRIMSHAW, M.	LI	TCBA	7	28
BROWNE, G.	LI	TCBA	7	29
HEMPHILL, C.	CL	TCBA	6	28
SCHLEI, A.	CL	TCBA	6	28

4 players tied at 5

The 10 players with the most Doubles

Name	Tm	Lg	2B
EVERS, J.	CL	TCBA	5
SCHLEI, A.	CL	TCBA	2
FLICK, E.	LI	TCBA	2
ALPERMAN, W.	LI	TCBA	1
COURTNEY, E.	LI	TCBA	1
GLEASON, K.	LI	TCBA	1
BRIDWELL, A.	CL	TCBA	1
HAYDEN, J.	CL	TCBA	1
GRIMSHAW, M.	LI	TCBA	1
TENNEY, F.	CL	TCBA	1

The 35 players with the most Triples

Name	Tm	Lg	3B	PA
GRIMSHAW, M.	LI	TCBA	2	28
SCHLEI, A.	CL	TCBA	2	28
HESS, O.	CL	TCBA	1	5
HAYDEN, J.	CL	TCBA	1	25
HEMPHILL, C.	CL	TCBA	1	28
THOMAS, R.	LI	TCBA	1	30

29 players tied at 0

The 35 players with the most Home Runs

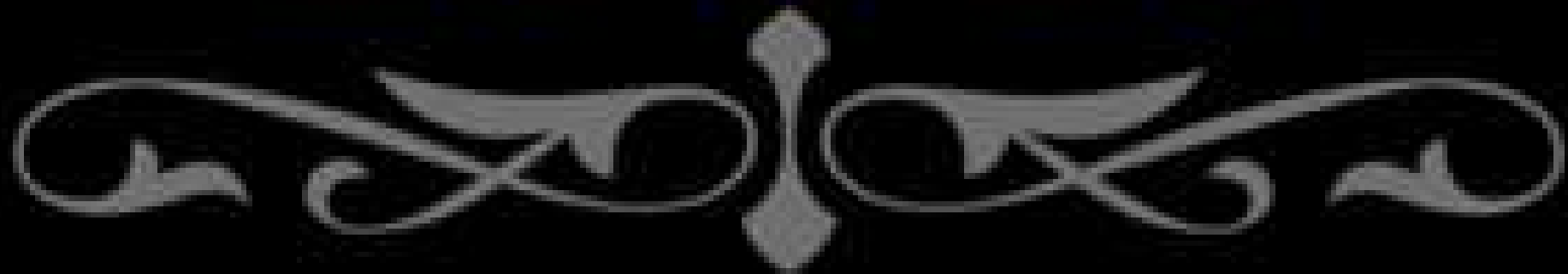
Name	Tm	Lg	HR
35 players tied at 0			

Elmer Flick led all batters with 10 hits for Long Island (.357) while Johnny Evers (.321) scored five of the Nap runs and drove in four others. Five of Evers' nine hits were for an extra base, all doubles. Roy Thomas (.320), Admiral Schlei (5 RBI) and George Browne (4 RBI) each had a solid series for their clubs.

The background of the slide is a photograph of an ancient Egyptian wall covered in hieroglyphs. The hieroglyphs are arranged in horizontal registers. In the center, there is a large scene depicting several figures, possibly a family or a group of people, engaged in an activity. The figures are shown in profile, wearing traditional Egyptian clothing. The overall color of the image is a warm, golden-brown hue.

TCBA ORIGINS 1902 – 1907
(proposed through 1920)

19000s



1902 – Turin Mountaineers
1903 – Cleveland Naps
1904 – Long Island Islanders
1905 – Long Island Islanders
1906 – Long Island Islanders
1907 – Cleveland Naps
1908 –
1909 –



III

9

III

IO

S





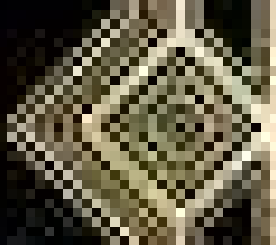
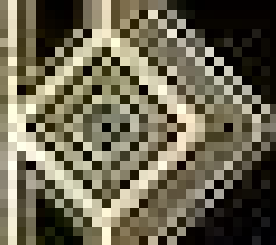
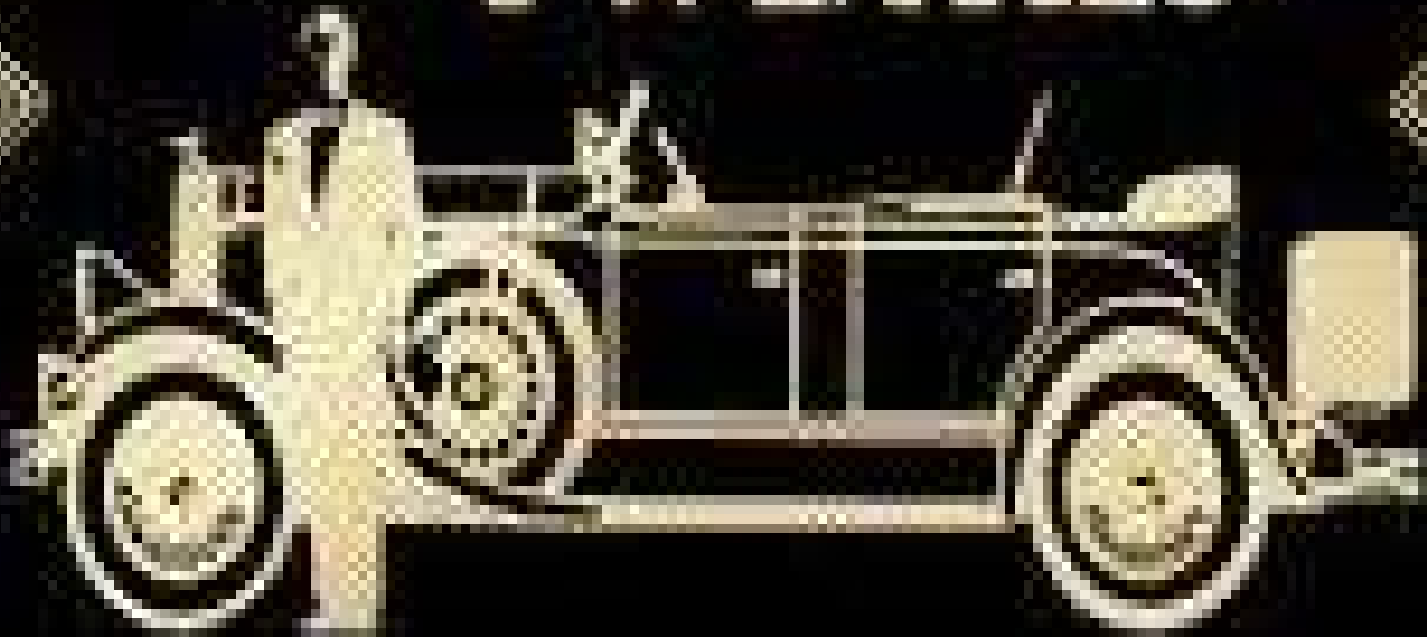
UNFILLED



**TCBA GOLD
1921-1943**

The Roaring

TWENTIES





1921 – Long Island Islanders
1922 – Bergen Barflies
1923 – Siouxland Explorers
1924 – Bergen Barflies
1925 – Mimosa Mirthmakers
1926 – Fortney Gators
1927 – Bergen Barflies
1928 – Bergen Barflies
1929 – Long Island Islanders

MARSHALL ISLANDS

1930 ▶ DECADE OF THE GREAT DEPRESSION • 1939

THE 20TH CENTURY

60



ECONOMIC DEPRESSION ENGLUFS THE WORLD

1930s



1930 – Kilkenny Gaelics

1931 – Long Island Islanders

1932 – South Starrucca Ainspans

1933 – Portsmouth Pubdwellers

1934 – Hyde Park VitaMen

1935 – Mimosa Mirthmakers

1936 – Fortney Gators

1937 - South Starrucca Ainspans

1938 – Kilkenny Gaelics

1939 – South Starrucca Ainspans

1948

An aerial, black and white photograph of a baseball field. The field is diamond-shaped with a pitcher's mound in the center. Several players are visible on the field, including one near the pitcher's mound and others positioned around the bases. The outfield is visible with some players. In the background, there are bleachers filled with spectators. A scoreboard is visible on the left side of the stands. The text is overlaid on the right side of the image.

1940 – Chesapeake Regnads
1941 – Bergen Barflies
1942 – Sacramento Solons
1943 – South Starrucca Ainspans



1944-1974
TCBA
YESTERDAY

“The best thing about baseball today is its yesterdays.” Lawrence Ritter

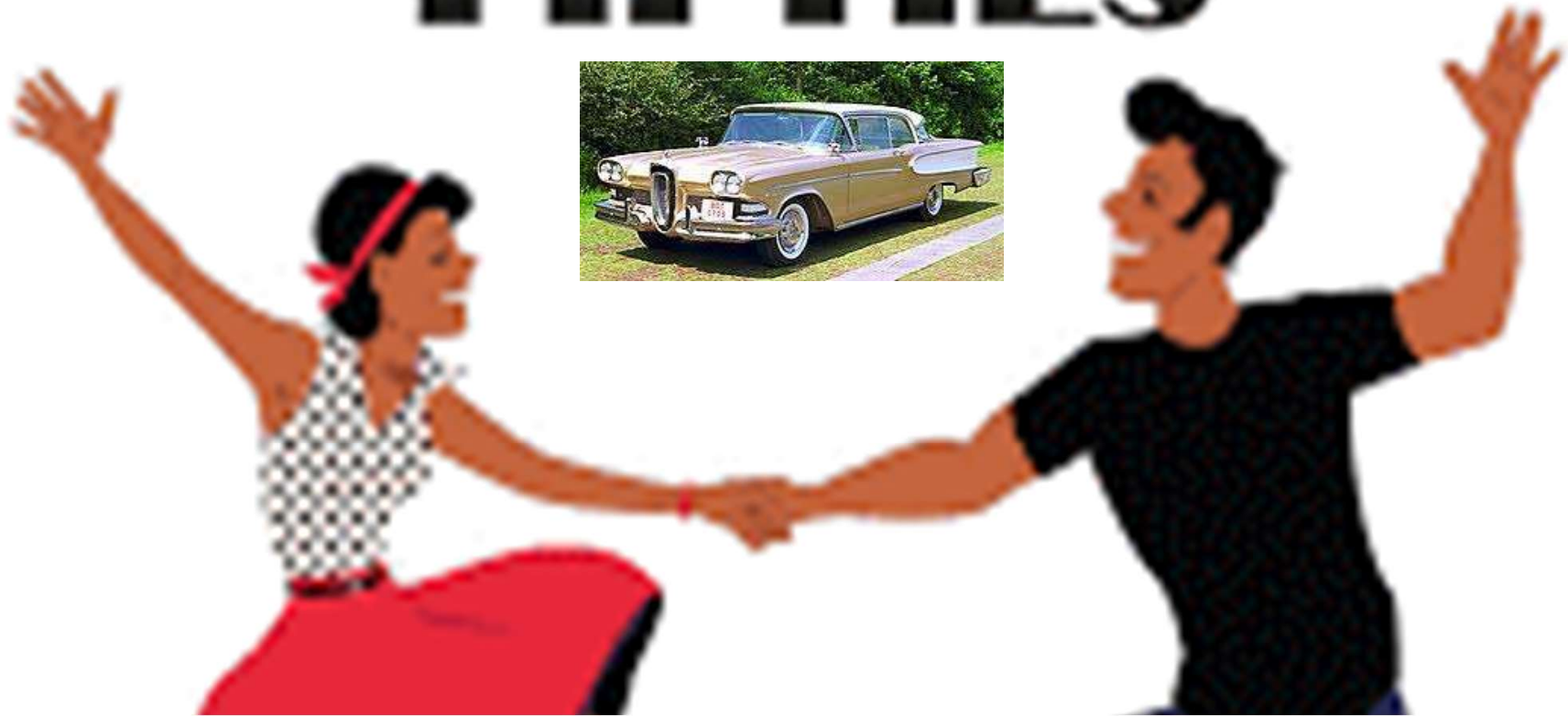
1940s





1944 – Long Island Islanders
1945 – Mexicali Mallards
1946 – Sacramento Solons
1947 – Mimosa Mirthmakers
1948 – Bradenton Buckeyes
1949 – Bradenton Buckeyes

THE FABULOUS FIFTIES





1950 – South Starrucca Ainspans

1951 – Mimosa Mirthmakers

1952 – Fortney Gators

1953 – Fortney Gators

1954 – South Starrucca Ainspans

1955 – Norfolk Pilots

1956 – Hyde Park VitaMen

1957 – Hyde Park VitaMen

1958 – Hyde Park VitaMen

1959 – Bradenton Buckeyes





- 1960 – Bradenton Buckeyes**
- 1961 – Wilderness Wraiths**
- 1962 – South Starrucca Ainspans**
- 1963 – South Starrucca Ainspans**
- 1964 – Mimosa Mirthmakers**
- 1965 – Bergen Barflies**
- 1966 – South Starrucca Ainspans**
- 1967 – South Starrucca Ainspans**
- 1968 – Long Island Islanders**
- 1969 – Cleveland Spiders**

ZOO

An aerial photograph of a baseball stadium, showing the green field, brown dirt base paths, and the surrounding seating areas filled with spectators. The stadium lights are visible in the background. Overlaid on the field is a list of teams and their years.

1970 – Fortney Gators
1971 – Newmarket Eh's
1972 – Hyde Park VitaMen
1973 – Long Island Islanders
1974 – Norfolk Pilots

TCBA



1975 - 2020





1975 – Harbor Beach Combers
1976 – Hyde Park Vitamen
1977 – Shiloh Spurs
1978 – Greylock Gators
1979 – Rockford Patriots

TIME

8

0

S




1980 – Norfolk Pilots **1985 – Long Island Islanders**
1981 – Winnebago Indians **1986 – Meadowlands Spartans**
1982 – Winnebago Indians **1987 – Long Island Islanders**
1983 – Long Island Islanders **1988 – Scranton Spanish Flies**
1984 – Mimosa Mirthmakers **1989 – Beacon Braves**

1990s



1990 – Scranton Spanish Flies	1995 – Horseshoe Bay Polos
1991 – Scranton Spanish Flies	1996 – Bethesda Bambinos
1992 – Bethesda Bambinos	1997 – Rapidan Rapids
1993 – Scranton Spanish Flies	1998 – Newark Eagles
1994 – Scranton Spanish Flies	1999 – Newark Eagles



2000's



2000 – Long Island Islanders

2001 – Farmington Rats

2002 – Scranton Spanish Flies

2003 – Horseshoe Bay Polos

2004 – Newark Eagles

2005 – Pennsylvania Keystones

2006 – Farmington Rats

2007 – Long Island Islanders

2008 – Horseshoe Bay Polos

2009 – Silver Spring Senators



the
2010s

DECADE IN REVIEW



2010 – Scranton Spanish Flies **2015- Scranton Spanish Flies**
2011 – Fargo Fungoes **2016 – Rochester Cheetahs**
2012 – Bethesda Bambinos **2017 – Beacon Braves**
2013 – Bethesda Bambinos **2018 – Bethesda Bambinos**
2014 – Newark Eagles **2019 – Long Island Islanders**

THE

2020

S

2020-Newark Eagles
2021-(twelve team playoff)



MEET THE

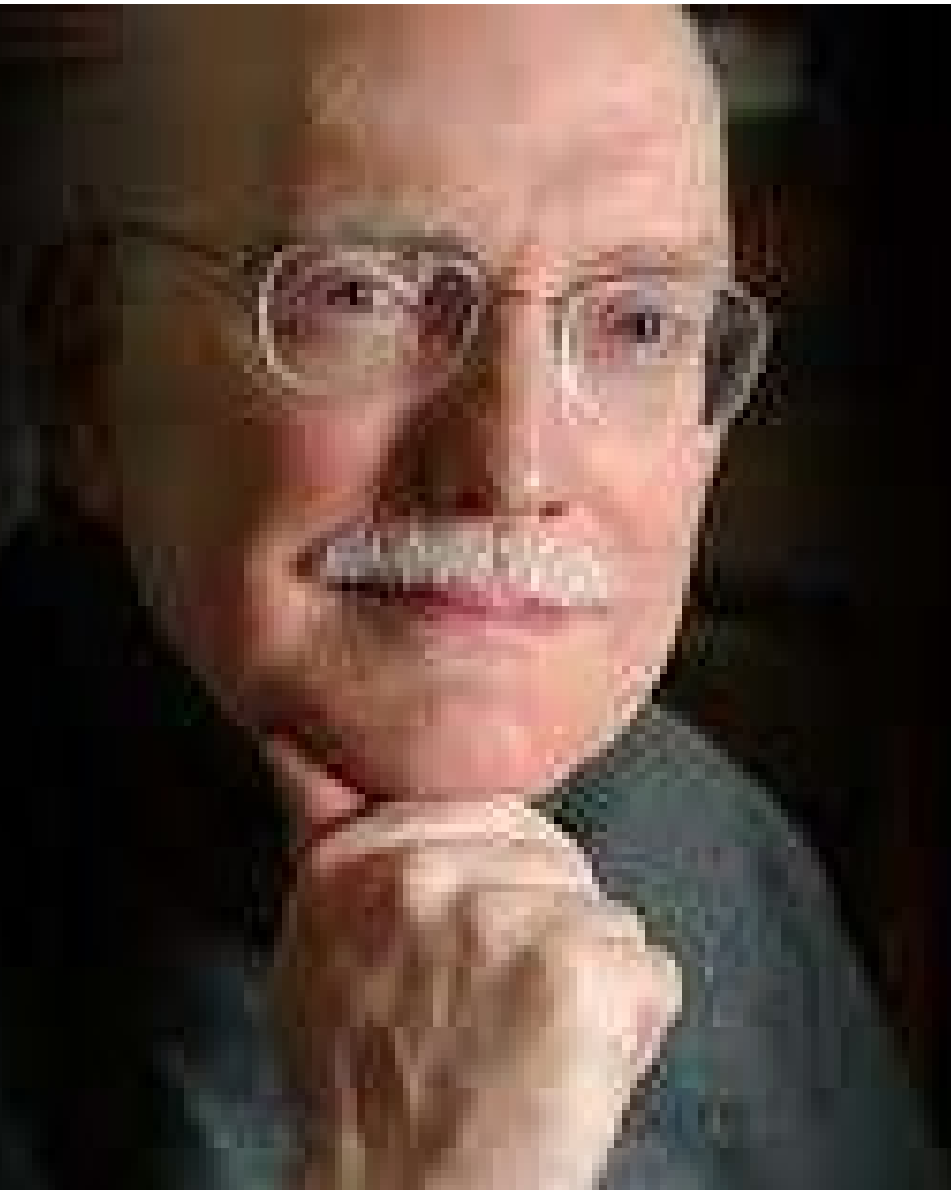
MANAGERS

MAHLEY DIVISION

a tribute to

DON MAHLEY

June 16, 1942 - March 1, 2014



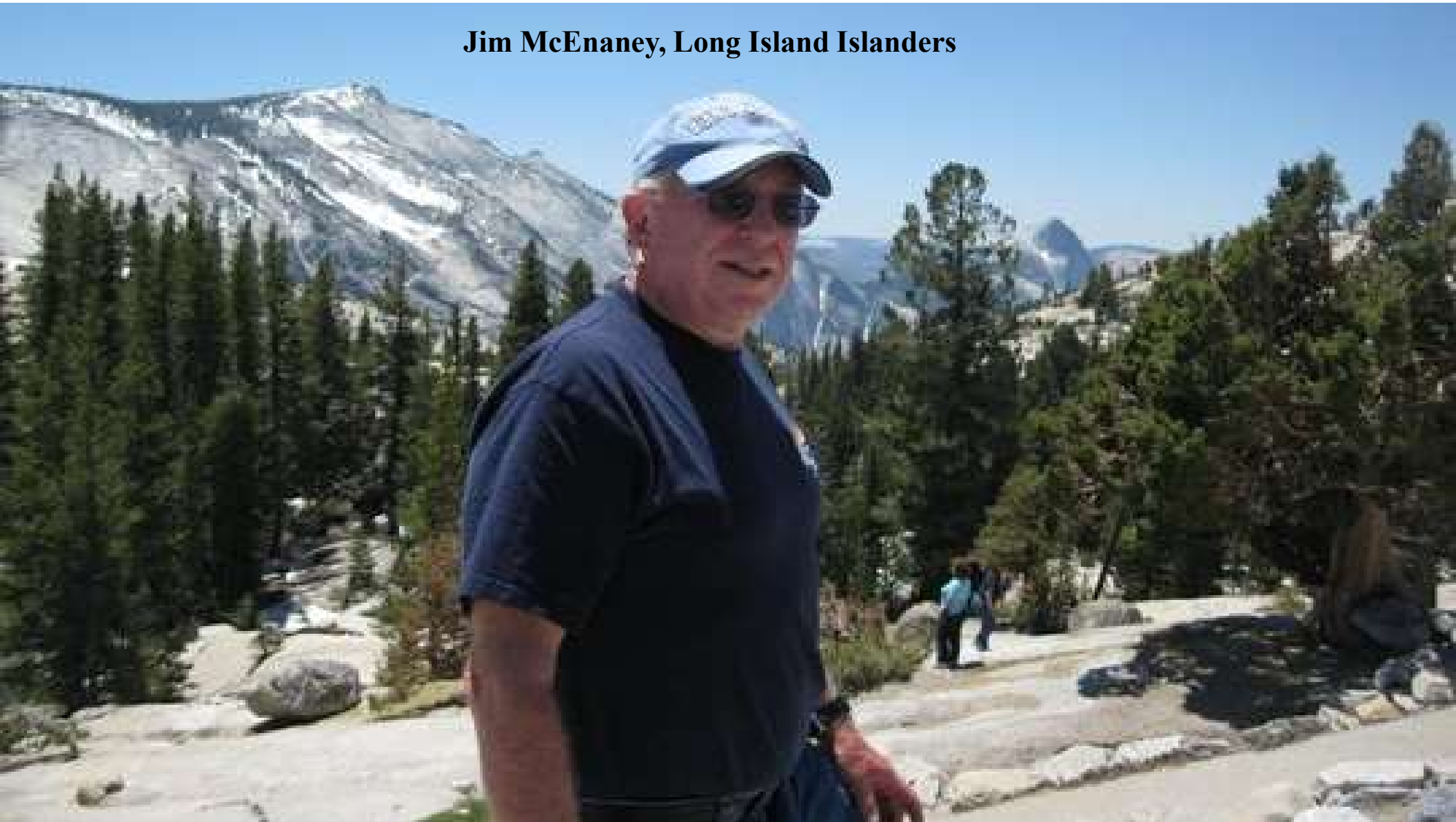


Bob Braun
Hyde Park
Vitamen

Marty
Fiehl
South
Starrucca
Ainspans



Jim McEnaney, Long Island Islanders





L.J. Honeycutt
Boston Replacement



Jim LaFargue, Boston Beaneaters



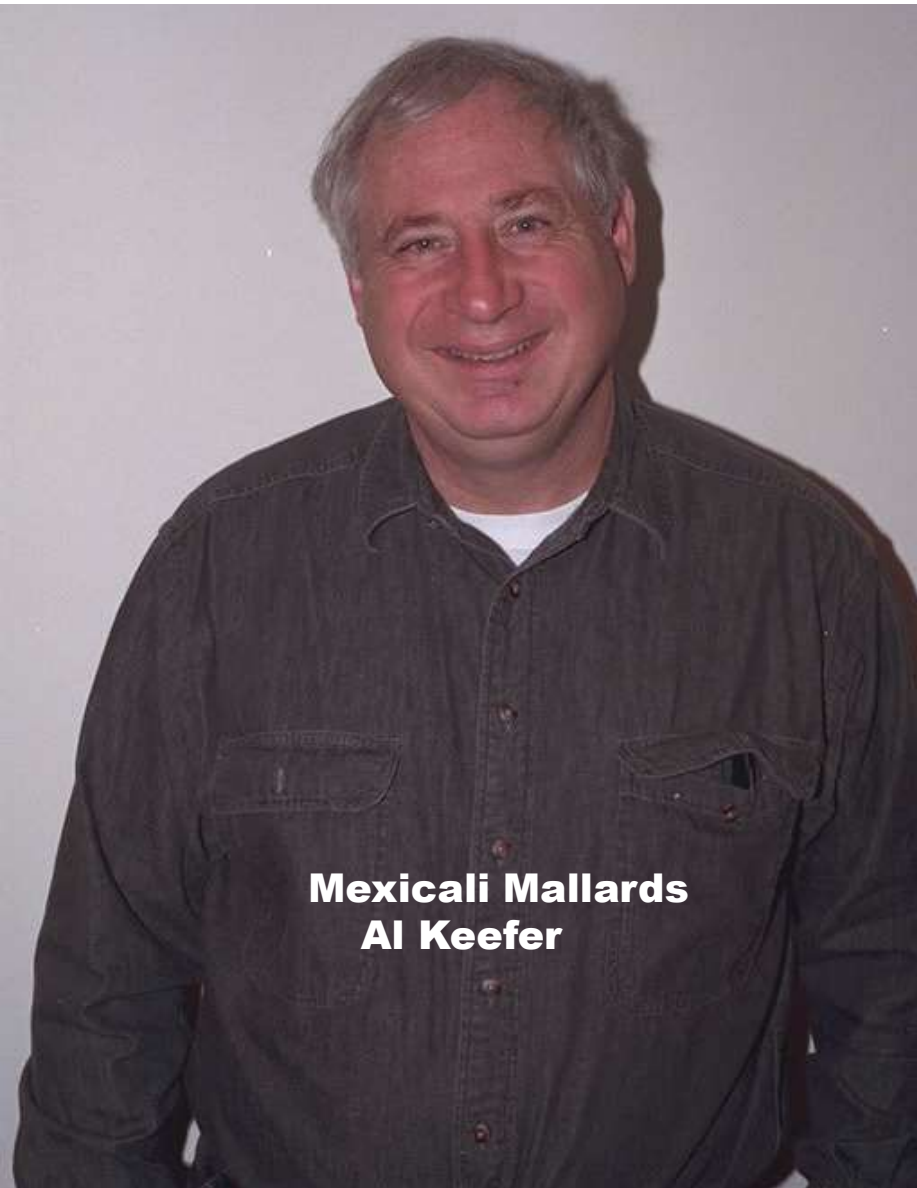
**McCORKINDALE
DIVISION**

**Bradenton Buckeyes
Bob Wood**



**Cleveland Naps
Gerry Hobbs**



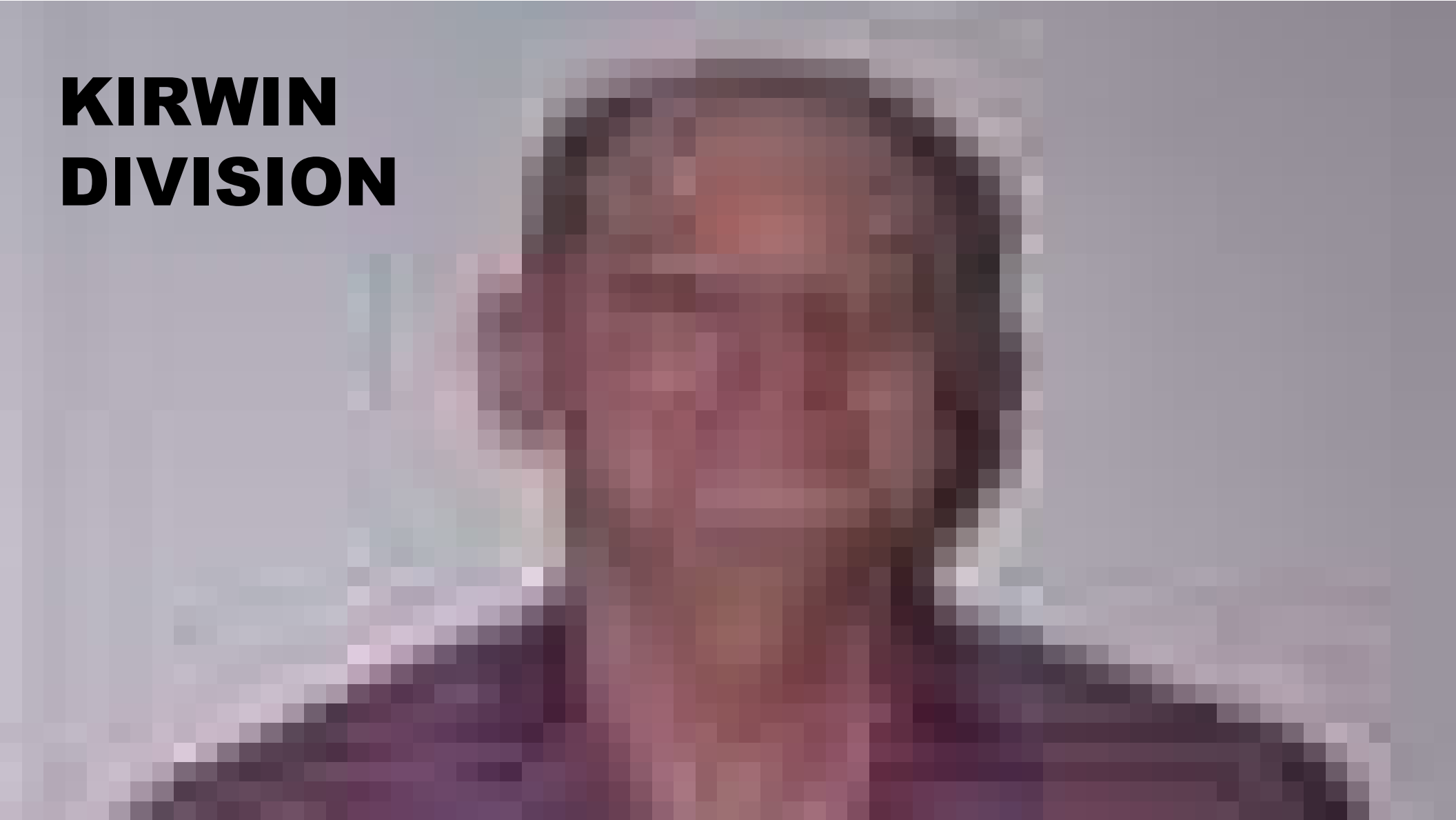


Mexicali Mallards
Al Keefer



Bergen Barflies
Tom Meade

KIRWIN DIVISION



Larry Smith, Mimosa Mirthmakers



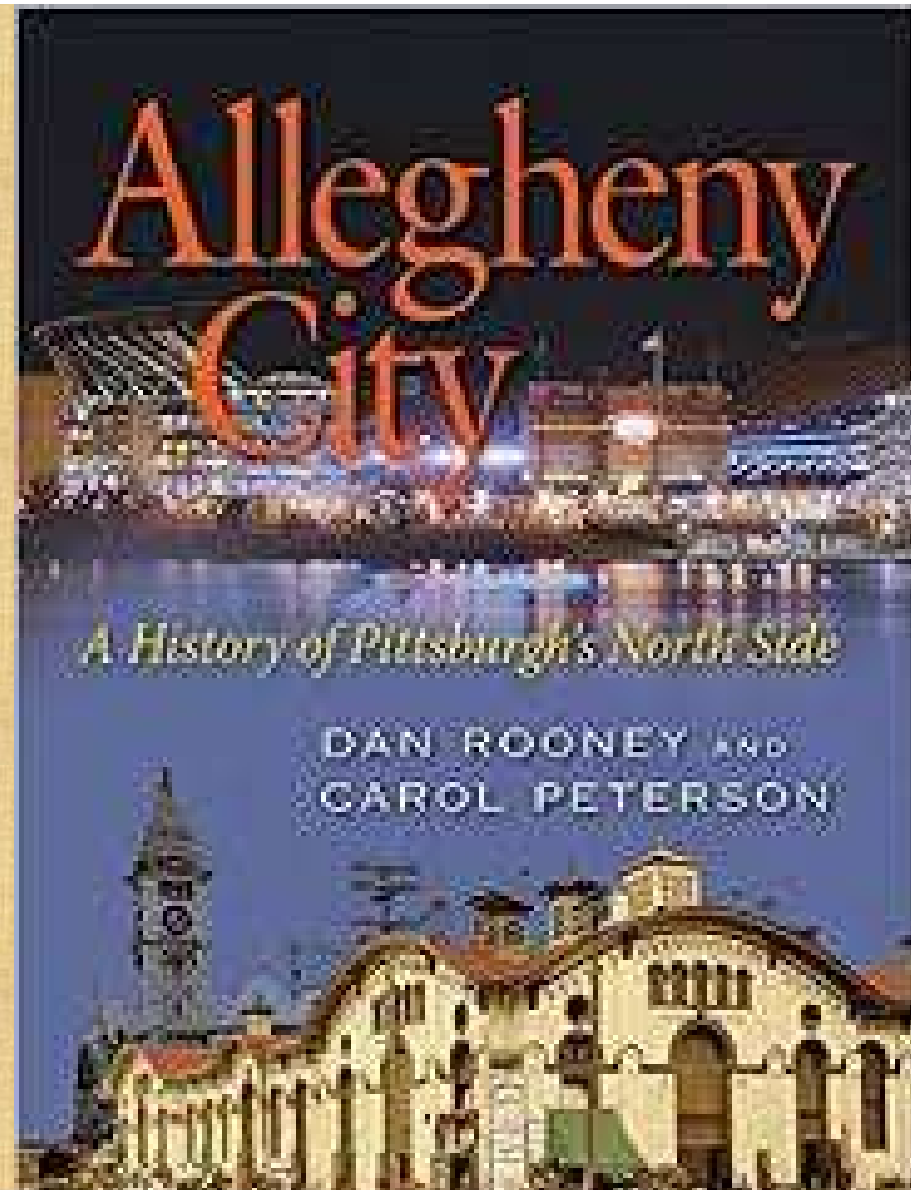


Ken Sajdak
Waukesha Freeman

Jeff Sajdak
Siouxland Explorers



Joe Elinich
Pittsburgh
Alleghenies



SEITZ DIVISION



Aaron Anderson
Buffalo Mules



Steve Lyon
Hereford Highlanders



Gary Sibley
Wilderness Wraiths



Ed Hebscher
London Tecumsehs



**Krakov Kayakers
J.R. Richardson**



The End